

F.W.Y. CURVE NO. 4-E	F.W.Y. CURVE NO. 5-E
DATA D=0°15'00" Δ=1°25'58" E=22918.33' T=286.57' L=573.11' LC=573.10' E=1.79	DATA D=0°20'00" Δ=2°40'00" E=17188.74' T=400.07' L=800.00' LC=799.93' E=4.66

B.M. O.M.X-49-ELEV. 637.335
Approx. 28 ft. S of C.L. of Lakeland Blvd and 122 ft. W of C.L. of E. 250th St. (produced), 28.15 ft. SW of top and center of hyd. on S side of Lakeland. 51.24 ft. E of N.V. IRI OBT pole #13449 on S side of Lakeland.

B.M. O.M.X-55-ELEV. 639.963
Approx. 28 ft. N of C.L. of Lakeland Blvd and 1150 ft. SW of C.L. of E. 260th St. 55.47 ft. N.E. of N.V. IRI OBT pole #28139 on N side of Lakeland. 73.60 ft. W of N.V. IRI OBT pole #13462 on S side of Lakeland.

FOR PAVEMENT DETAILS & ELEVATIONS SEE SHEET N03 69 71 9 72

Note "A"
The Contractor shall exercise care in the use of heavy equipment over this existing 30" water main. Existing grade shall be maintained in the area of the water main until final grading of ditches.

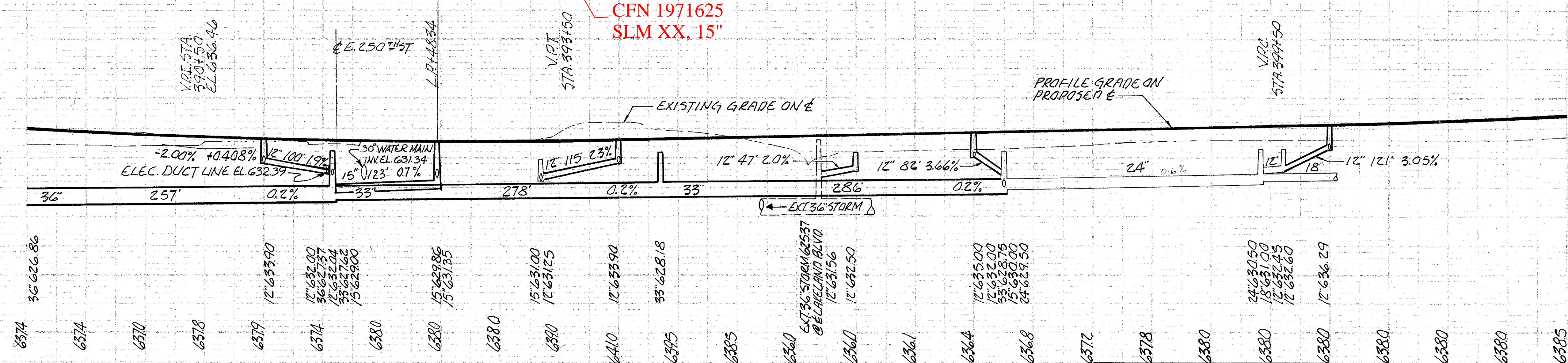
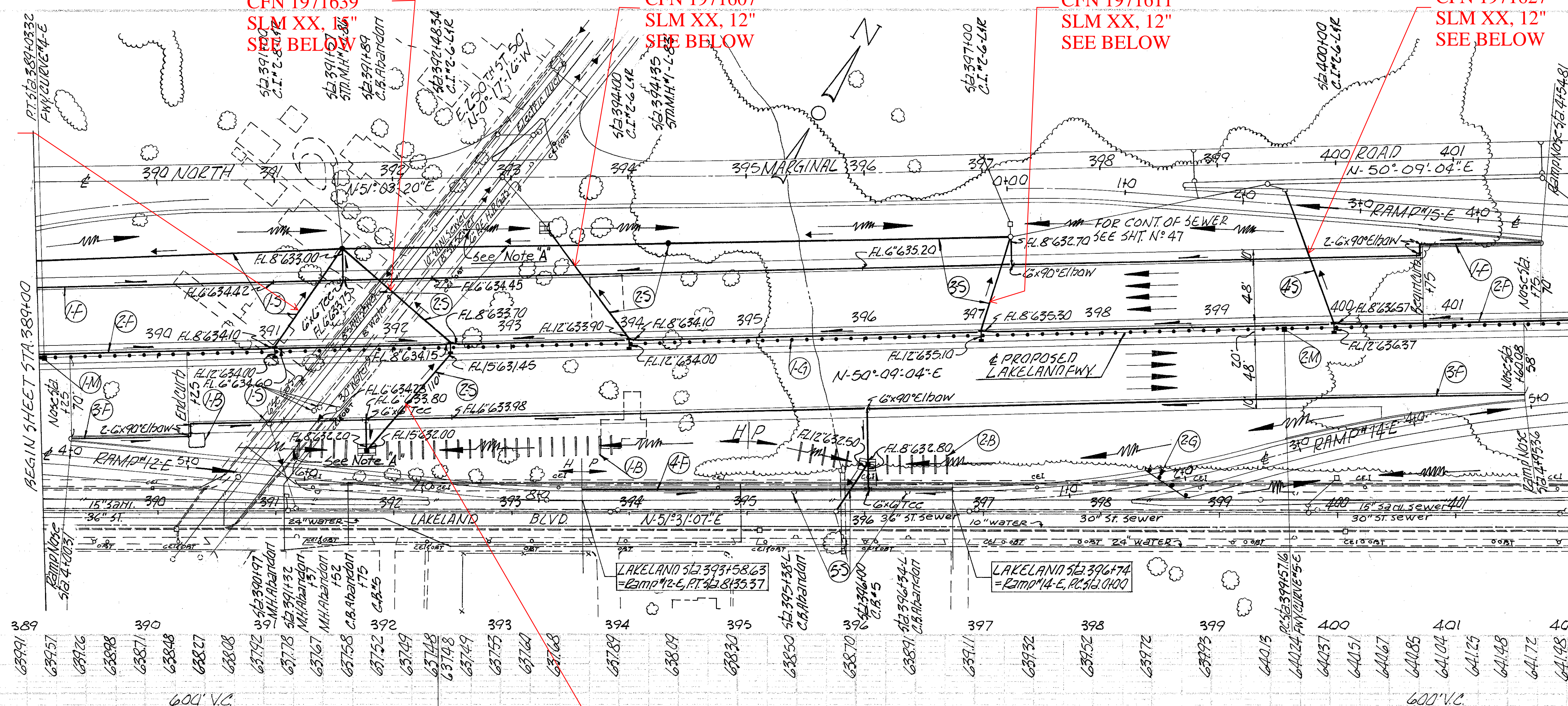
CFN 1971601
SLM XX, 12"
SEE BELOW

CFN 1971639
SLM XX, 15"
SEE BELOW

CFN 1971607
SLM XX, 12"
SEE BELOW

CFN 1971611
SLM XX, 12"
SEE BELOW

CFN 1971627
SLM XX, 12"
SEE BELOW



ITEM NO.	STATION	FROM	TO	LENGTH	WIDTH	SIDE	SODDING	I-5 EACH			
								7'x7'	8'x8'	10'x10'	
1-B	389+00	393+84	396+68	14	14	R	1	1	1	3	
2-B	395+44	396+68	396+70	12	12	R	1	1	1	3	
TOTAL								2	2	2	6

GUARD RAIL-TEMPORARY		
ITEM NO.	LOCATION	LIN. FT.
2-G	RAMP #14-E STA. 1480	37.5'
TOTAL		37.5'

GUARD RAIL			
ITEM NO.	STATION	SIDE	I-15 LIN. FT. STEEL BEAM TYPE (DEEP STD. DWG #2-A)
1-G	389+00	402+00	1300.00
TOTAL			1300.00

57A 390+00 TO 57A 400+00
EXCAVATION 16570 CU. YDS.
EMBANKMENT 5246 CU. YDS.
EMBANKMENT+22% 6400 CU. YDS.

I-8 MONUMENT ASSEMBLY			
ITEM NO.	STATION	SIDE	TYPE
1-M	389+03.32	R	1
2-M	399+57.16	R	1
TOTAL			2

ITEM NO.	STATION		SIDE	I-2 LIN. FT.				I-8 EACH				I-16 EA. ABANDON	LOCATION OF STRUCTURE		
	FROM	TO		12" CLB	15" CLB	33" CLB	36" CLB	12" CLB	15" CLB	STD. #1	STD. #2			STD. #3	STD. #4
1-3	389+00	391+57	L	6			255		97						390+92, 391+00, 132, 131, 152, 151
2-3	391+57	394+35	L	6	6	274		113	228	1	4	2	1	1	391+75, 189, 392, 483, 394+00, +35
3-3	394+35	397+24	R	6			282		79		2				397+00
4-3	399+57	400+00	R	6				119			2				400+00
5-3	396+38	396+34	R					44				1	2		395+38, 396+00, +34
TOTAL				24	6	556	255	452	228	2	8	2	2	3	4