

B.M. #10 - S.R. 84, 377' N. of E Euclid Spur, Top of Fire Hyd. in Front of Euclid No 2731.  
Adj. Elev. 791.184

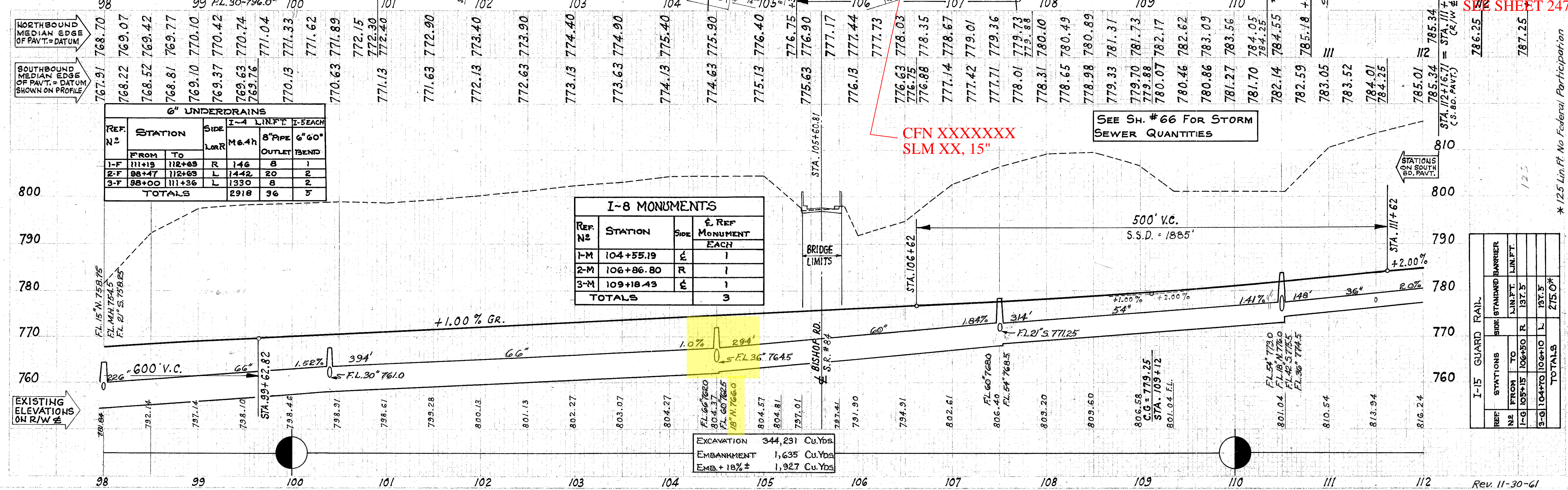
**EUCLID SPUR R/W & CURVE DATA**  
R = 2291.83  
D = 2° 30' 00"  
Δ = 66° 08' 03.8"  
T = 1432.21'  
L = 2645.44'  
Ch = 442.98'

**SOUTHBOUND & CURVE DATA SPIRAL**  
Ls = 700.00  
Ds = 8° 36' 46.8"  
P = 8.76'  
K = 349.73  
LT = 467.22'  
ST = 233.84'  
L.C. = 699.30'

**CENTRAL CURVE**  
Δc = 66° 16' 19.4"  
Ds = 2° 27' 39.6"  
Pc = 227.83'  
Tc = 1519.58'  
Ec = 452.08'  
Cc = 2544.99'  
Lc = 2692.89'  
Tc = 2435.15'  
Ec = 804.05'

**NORTHBOUND PAVEMENT CURVE DATA SPIRAL**  
Ls = 689.00'  
Ds = 8° 45' 00"  
P = 8.76'  
K = 344.23'  
LT = 459.89'  
ST = 230.18'  
L.C. = 688.28'

**CENTRAL CURVE**  
Δc = 65° 59' 53"  
Ds = 2° 32' 24"  
Pc = 2255.83'  
Tc = 1464.90'  
Ec = 433.91'  
Cc = 2457.36'  
Lc = 2598.35'  
Tc = 2365.39'  
Ec = 779.54'



REF. NO.	STATION		SIDE	I-4 L.I.N.F.T.	I-5 BEACH
	FROM	TO			
1-F	111+19	112+69	R	146	2
2-F	98+47	112+69	L	1442	20
3-F	98+00	111+36	L	1330	8
TOTALS				2918	36

REF. NO.	STATION		SIDE	I-4 L.I.N.F.T.	I-5 BEACH
	FROM	TO			
1-F	111+19	112+69	R	146	2
2-F	98+47	112+69	L	1442	20
3-F	98+00	111+36	L	1330	8
TOTALS				2918	36

REF. NO.	STATION	SIDE	I-8 MONUMENT	
			STATION	REF. MONUMENT
1-M	104+55.19	E		1
2-M	106+86.80	R		1
3-M	109+18.43	E		1
TOTALS				3

EXCAVATION 344,231 Cu.Yds.  
EMBANKMENT 1,635 Cu.Yds.  
EMB + 18% 1,927 Cu.Yds.

CFN XXXXXXXX  
SLM XX, 21"  
See Sheet 233

CFN 1971732  
SLM 0.67, 15"  
See Sheet 233

old CFN 43090082  
new CFN 1884320  
SLM 0.70, 30"  
SEE SHEET 237  
AND 238

old CFN 43090082  
new CFN 1884320  
SLM 0.78, 36"  
SEE SHEET 241  
AND 242

old CFN 43090078  
new CFN 1832716  
SLM 0.78, 60"  
SEE BELOW

BISHOP RD  
SLM 0.80  
MM 186.01  
SLM XX, 21"  
See Sheet 245

old CFN 43090082  
new CFN 1884321  
SLM 0.82, 54"  
SEE BELOW

CFN 1971729  
SLM 0.85, 18"  
See Sheet 245  
and 246

CFN XXXXXXXX  
SLM XX, 15"

SEE SH. #66 FOR STORM SEWER QUANTITIES

REF.	STATIONS		SIDE	STANDARD BARRIER	L.I.N.F.T.
	FROM	TO			
I-5	106+15	106+50	R		137.5
3-G	104+70	106+10	L		137.5
TOTALS					275.0*

CUYAHOGA COUNTY  
SEC. CUY-2-28.16 & CUY-525-0.00  
LAKE COUNTY  
SEC. LAK-525-0.00

CFN 1971734  
SLM 0.90, 18"  
See Sheet 247  
AND 248

old CFN 43090090  
new CFN 18?????  
SLM 0.89, 36"  
SEE BELOW

CFN 1971733  
SLM XX, 18"  
See Sheet 68  
AND 250

old CFN 43090089  
new CFN 1849710  
SLM 0.89, 42"  
SEE SHEET 247

\* 1/25 Lin.Ft. No Federal Participation