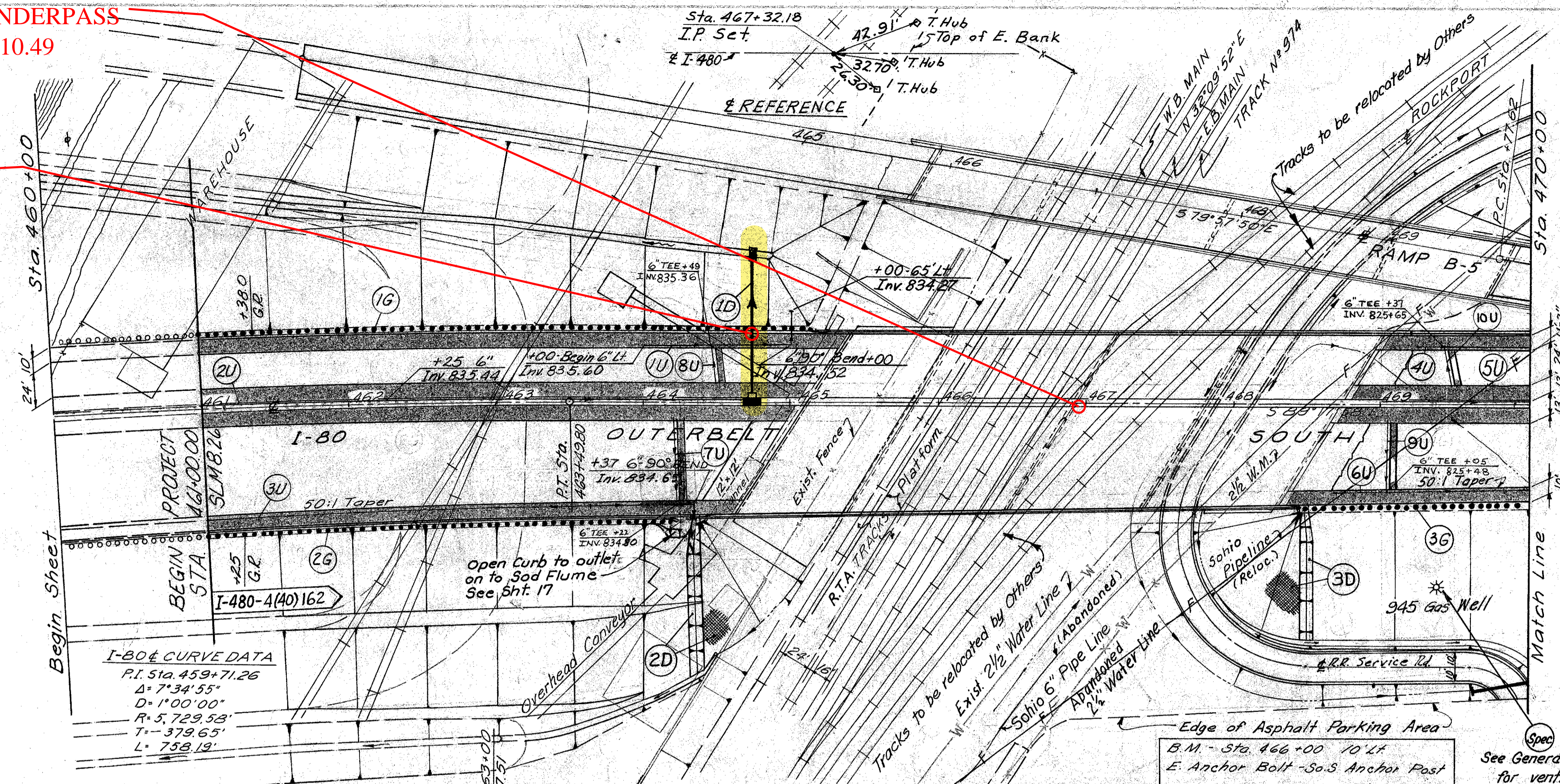


RTA AND RR UNDERPASS
SLM 8.32 = MM 10.49

CFN 1974211
SLM 8.26, 15"
SEE SHEET XX



For I-D, See Sht. 28

FED. RD. DIVISION	STATE	PROJECT	TYPE	FIG.
5	OHIO			11

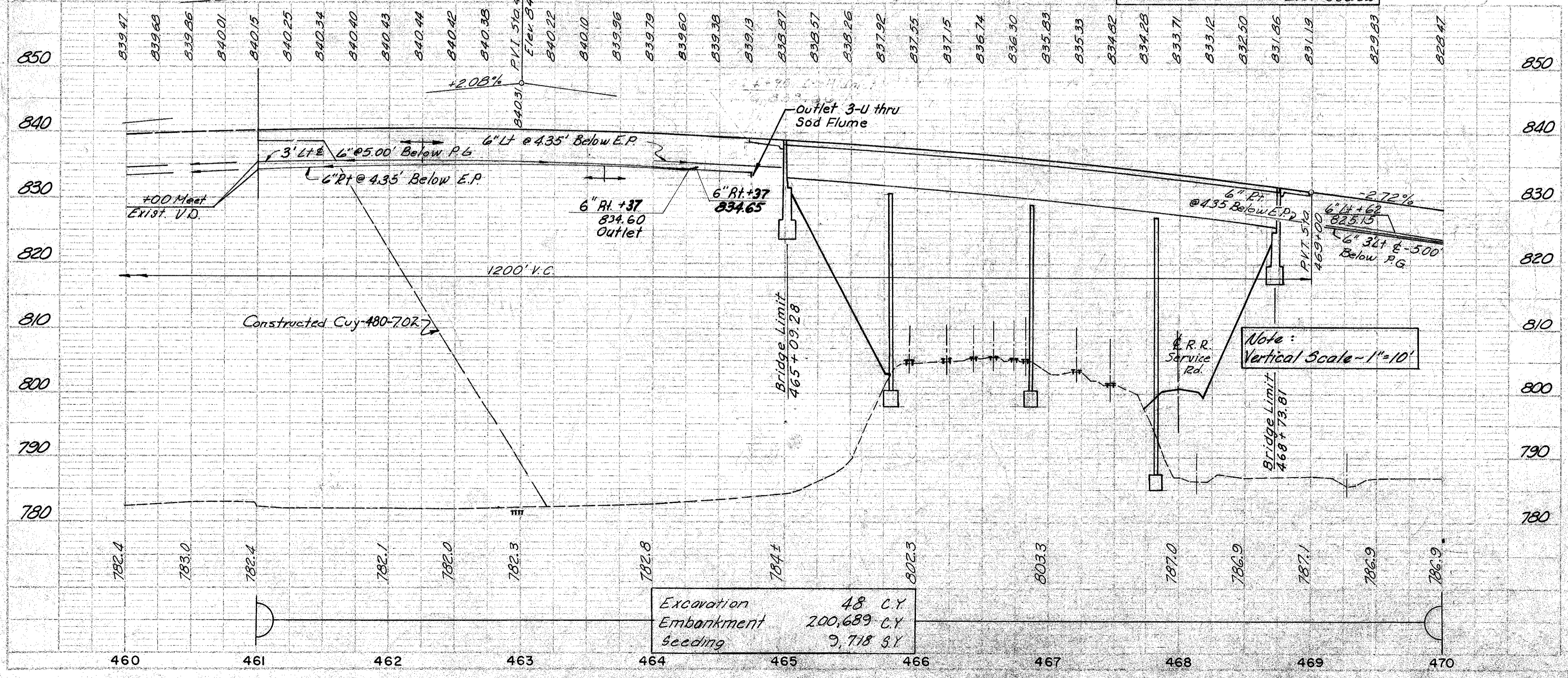
CUYAHOGA COUNTY
CUY-480-8.26

Estimated Quantities		Reinforced Sodding	Seeding and Jute Matting	Special Plugging Oil or Gas Wells
Ref. No.	Side	Location	S.Y.	S.Y.
2D	Rt.	464+30 to 465+10	38	550
3D	Rt.	467+75 to 468+52	33	642
Spec. Rt. 469+37				1
Totals			71	1192

CROSS REFERENCE	
Sht. No.	Item
66	Structure
20-23	Cross Sections
13-14	B-5 Plan & Profile
15	R.R. Service Road
17-18	Pavement Details

Estimated Quantities		6" Type F	15" Type F	15" Branches	6" Underdrains	6" Rock Channel	6" Prot. Type B	Masonry	I-13 Inlet	15" Type B	6" Branches	6" Guard Rail	6" Type 5	Bridge Terminal Assy. Type A
Ref. No.	Side	Location	L.F.	L.F.	L.F.	C.Y.	C.Y.	Ea.	Ea.	L.F.	L.F.	L.F.	Ea.	Ea.
1-U	Lt.	464+00 To 465+00	20					111						
2-U	Rt.	461+00 To 462+75	10					365						
3-U	Rt.	461+00 To 462+38	10					338						
4-U	Lt.	469+25 To 470+00						75						
5-U	Lt.	469+00 To 470+00						100						
6-U	Rt.	468+70 To 470+00						130						
1D	Rt.	467+75		39	2		2	0.25	1	59				
1G	Lt.	461+00 To Struct.											418	1
2G	Rt.	461+00 To Struct.											354	1
3G	Rt.	Struct. To 470+00											159	1
7U		464+33												
8U		467+33												
9U		469+05												
10U		469+37												
Totals			40	39	2	1283	2	0.25	1	59		931		3

* With Bedding



I-80 SUPERELEVATION TABLE

WESTBOUND LANES		REMARKS	STATION	PROFILE GRADE	EASTBOUND LANES	
LT. EDGE	12' LT.				12' RT.	24' RT.
840.73	840.44	FULL SUPER = 0.024 1/2	461+00	840.15	839.86	839.57
840.83	840.54		461+25	840.25	839.96	839.67
840.92	840.63		461+50	840.34	840.05	839.76
840.98	840.69		461+75	840.40	840.11	839.82
841.01	840.72		462+00	840.43	840.14	839.85
841.02	840.73		462+25	840.44	840.15	839.86
841.00	840.71		462+50	840.42	840.13	839.84
840.96	840.67		462+75	840.38	840.09	839.82
840.88	840.60		463+00	840.31	840.04	839.80
840.72	840.47		463+25	840.22	840.00	839.78
840.48	840.31	PT.	463+49.80	840.10	839.95	839.76
840.48	840.31		463+50	840.10	839.95	839.76
840.21	840.15		463+75	839.96	839.90	839.71
839.95	839.98		464+00	839.79	839.82	839.63
839.67	839.79	Normal	464+25	839.60	839.70	839.51
839.41	839.57		464+50	839.38	839.54	839.35
839.13	839.32		464+75	839.13	839.32	839.13

PROPOSED STRUCTURE N° CUY-80-0831
TYPE: Continuous steel girder with reinforced concrete deck and structure.
SPANS: 69'-6", 106'-9", 93'-0", 90'-0" % Brgs.
ROADWAY: Variable width, see plan, BR-1-67 railing, concrete barrier median
LOADING: HS 20-44 and Interstate alternate loading.
WEARING SURFACE: Monolithic Concrete
SKREW: 31° 27' 50" Left Forward
ALIGNMENT: Tangent
APPROACH SLABS: A5-1-72 Modified, (25' Long)

Rev. D.R.S. 1-6-78
 Rev. J.T.H. 3-6-78
 Rev. J.T.H. 8-25-69

Rev. 1-10-78