

SEEDING
BY
END SQ.
WIDTH YDS.

33
96
36
30
88
33
195
37
103
37
43
120
43
602

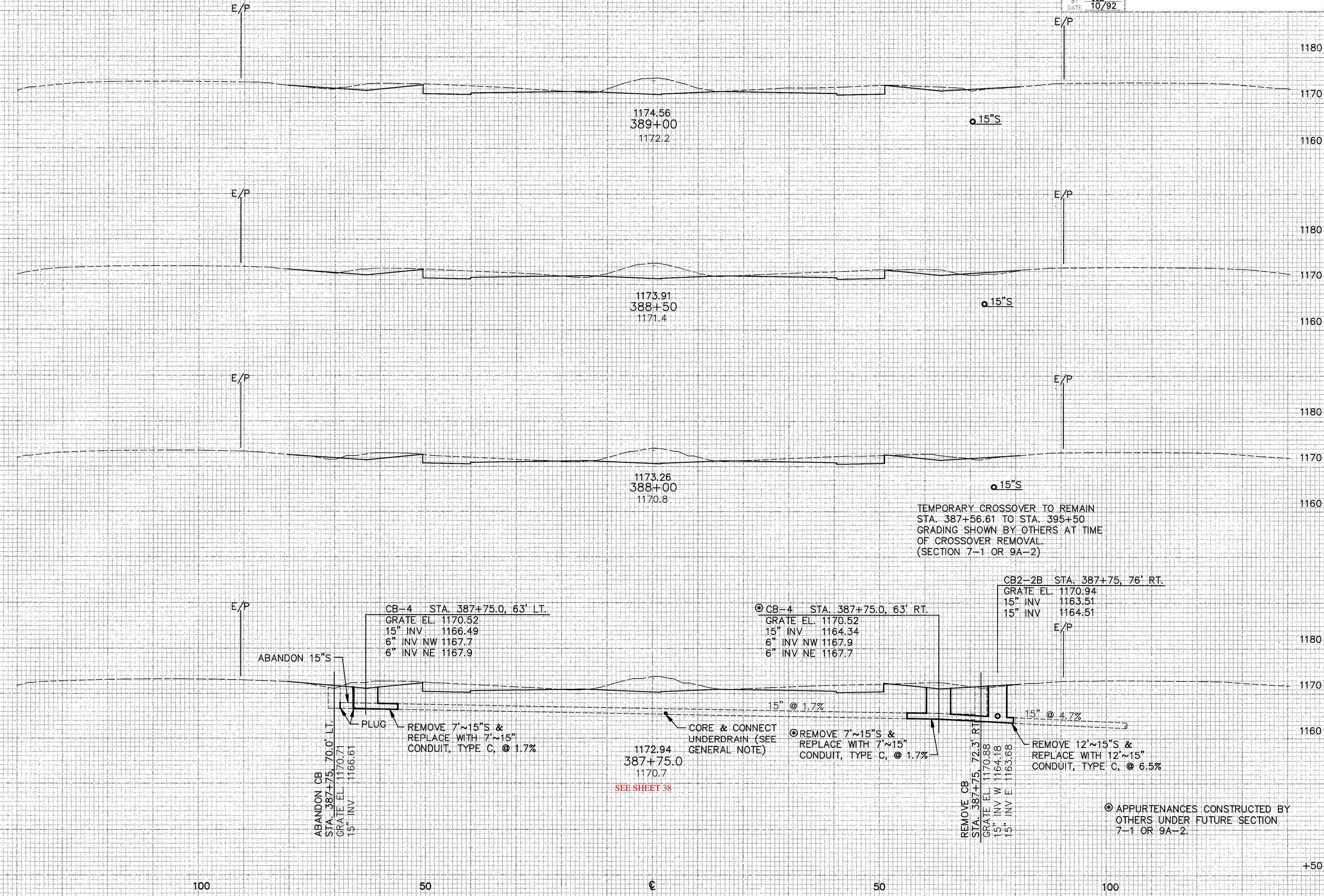
CALC BY ALM
DATE 10/92
DND BY JJB
DATE 10/92

CUY-271-6.41

OHIO
REGION 5
END AREA
CUT FILL

59
145

CUT	FILL	VOLUME
152	2	273.7
144	5	259.10
137	5	7
278		
166	2	810.24



TEMPORARY CROSSOVER TO REMAIN
STA. 387+56.61 TO STA. 395+50
GRADING SHOWN BY OTHERS AT TIME
OF CROSSOVER REMOVAL.
(SECTION 7-1 OR 9A-2)

CB-4 STA. 387+75.0, 63' LT.
GRATE EL. 1170.52
15" INV 1166.49
6" INV NW 1167.7
6" INV NE 1167.9

⊙ CB-4 STA. 387+75.0, 63' RT.
GRATE EL. 1170.52
15" INV 1164.34
6" INV NW 1167.9
6" INV NE 1167.7

CB2-2B STA. 387+75, 76' RT.
GRATE EL. 1170.94
15" INV 1163.51
15" INV 1164.51

ABANDON CB
STA. 387+75, 70.0' LT.
GRATE EL. 1170.71
15" INV 1166.61

REMOVE 7"~15" S &
REPLACE WITH 7"~15"
CONDUIT, TYPE C, @ 1.7%

PLUG

15" @ 1.7%

CORE & CONNECT
UNDERDRAIN (SEE
GENERAL NOTE)

1172.94
387+75.0
1170.7

⊙ REMOVE 7"~15" S &
REPLACE WITH 7"~15"
CONDUIT, TYPE C, @ 1.7%

REMOVE CB
STA. 387+75, 72.3' RT.
GRATE EL. 1170.88
15" INV W 1164.18
15" INV E 1163.68

15" @ 4.7%

REMOVE 12"~15" S &
REPLACE WITH 12"~15"
CONDUIT, TYPE C, @ 6.5%

⊙ APPURTENANCES CONSTRUCTED BY
OTHERS UNDER FUTURE SECTION
7-1 OR 9A-2.

SEE SHEET 38