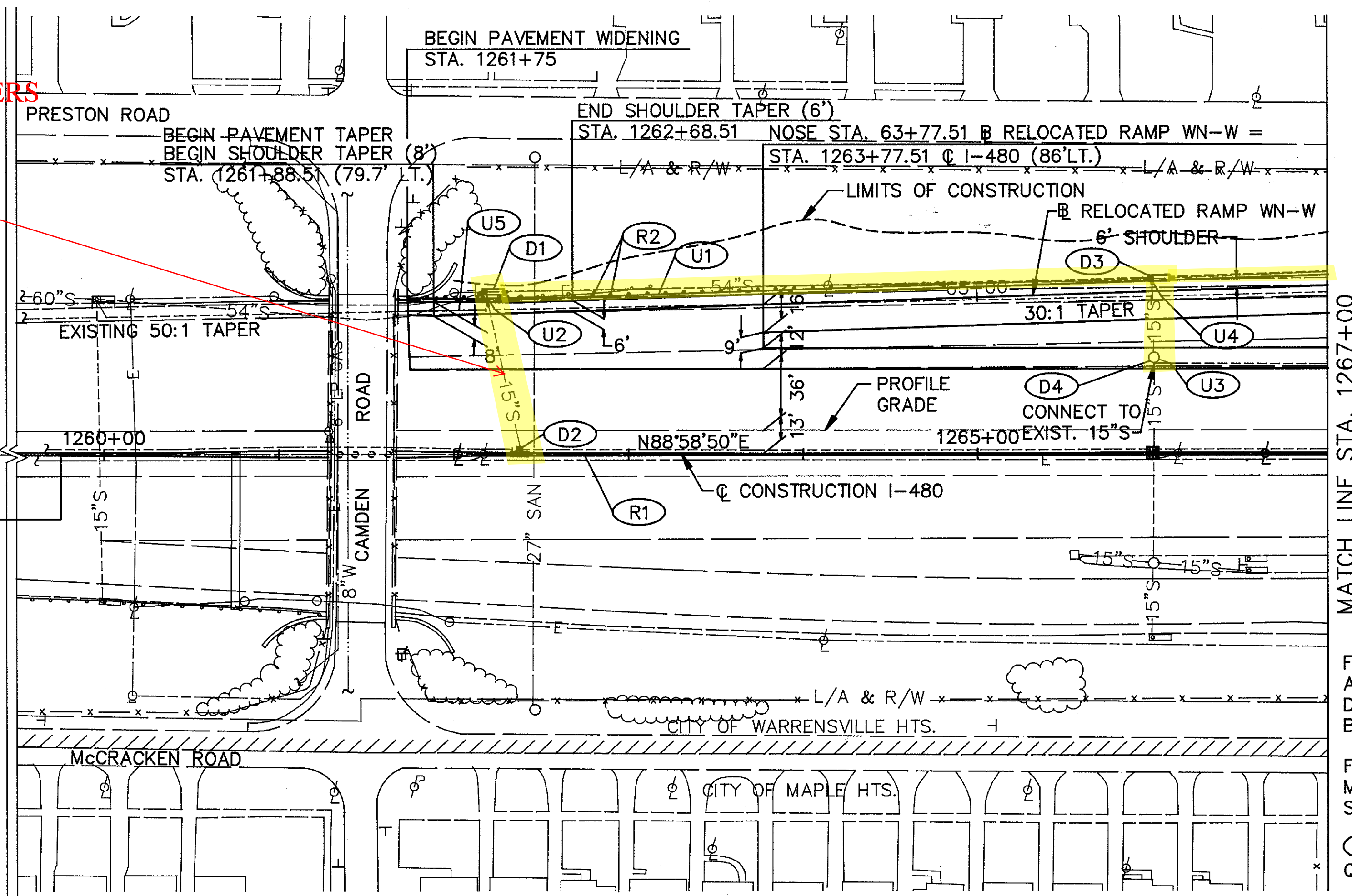


SEE 1971 CUY-480-23.45
SHEET 82 FOR ORIGINAL
CONSTRUCTION OF SEWERS

CFN XXXXXXX
SLM 23.45, 15"

BEGIN WORK
STA. 1220+50.00

BEGIN MEDIAN BARRIER
REPLACEMENT
STA. 1259+75



FOR RAMP WN-W SEE
SHEETS 200 AND 201.



MATCH LINE STA. 1267+00

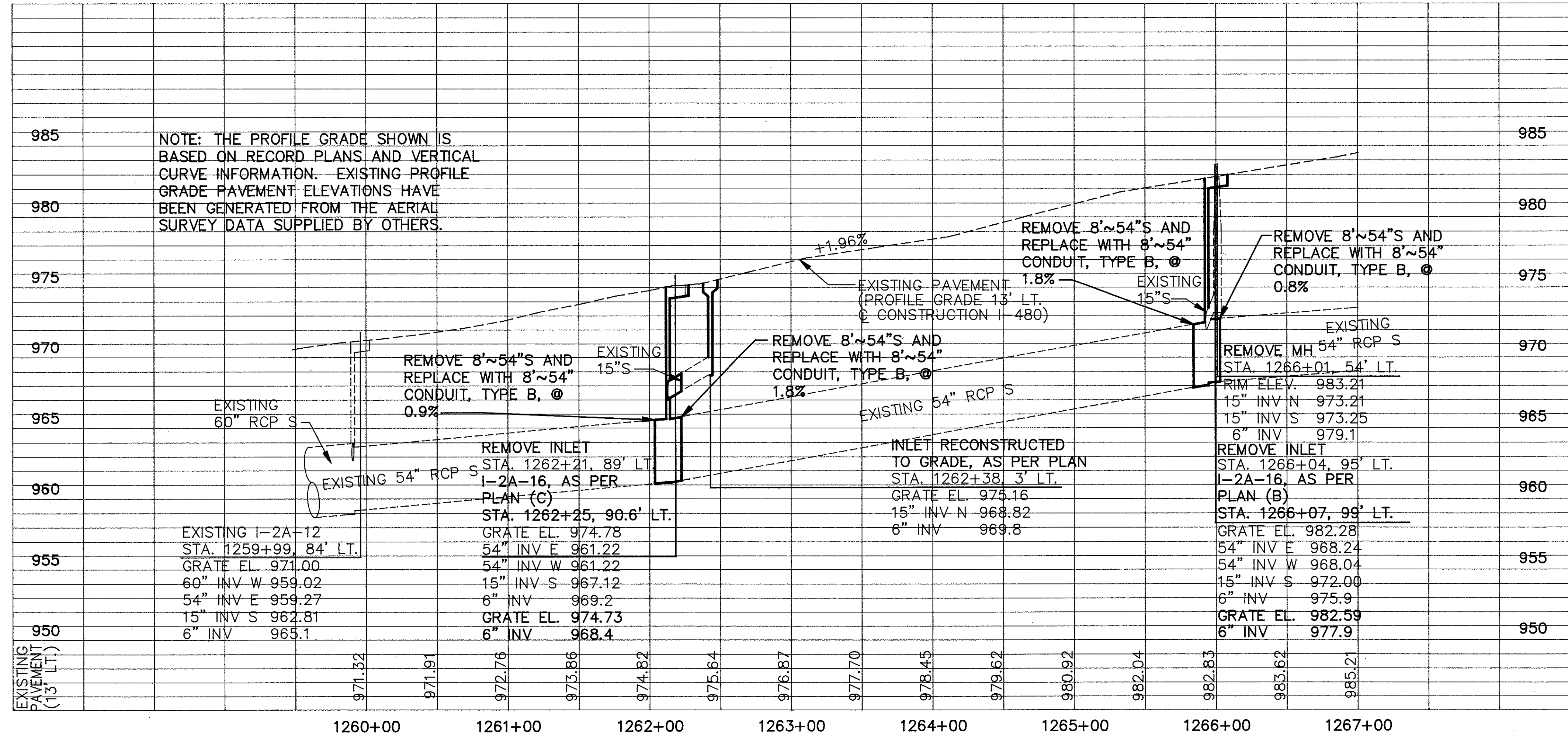
FOR BARRIER MEDIAN
AND PIER PROTECTION
DETAILS AT CAMDEN ROAD
BRIDGE, SEE SHEET 270.

FOR BENCHMARKS AND
MONUMENTATION, SEE
SHEET 269.

(R) FOR ROADWAY
QUANTITIES, SEE SHEET 69.

ESTIMATED QUANTITIES

REF.	FROM	TO	SIDE	ESTIMATED QUANTITIES						
				EA.	L.F.	L.F.	EA.	EA.		
				202	603	604				
				MANHOLE REMOVED	15" CONDUIT, TYPE B, 706.02	54" CONDUIT, TYPE B, 706.02, 1500 D-LOAD	INLET, NO. 2-A-16, AS PER PLAN (B)	INLET, NO. 2-A-16, AS PER PLAN (C)	INLET RECONSTRUCTED TO GRADE, AS PER PLAN	
D1	1262+25		L		8	16		1		
D2	1262+38		L					1		
D3	1266+07		L		8	16	1			
D4	1266+01		L	1	16					
TOTALS					1	32	32	1	1	1



REF.	FROM	TO	SIDE	603		605	
				L.F.	L.F.	EA.	EA.
				6" CONDUIT, TYPE F*	6" DEEP PIPE UNDERDRAIN WITH FABRIC WRAP	6" FITTINGS	
U1	1262+18	1267+00	L	20	460		
U2	1262+25		L	14			1
U3	1266+01	1266+11	L	10			
U4	1266+07		L	13			1
U5	1261+75	1262+23	L		48		
TOTALS					57	508	

* 707.17 NON-PERFORATED, ASTM D3034 SDR 35, SS 931 OR SS 944