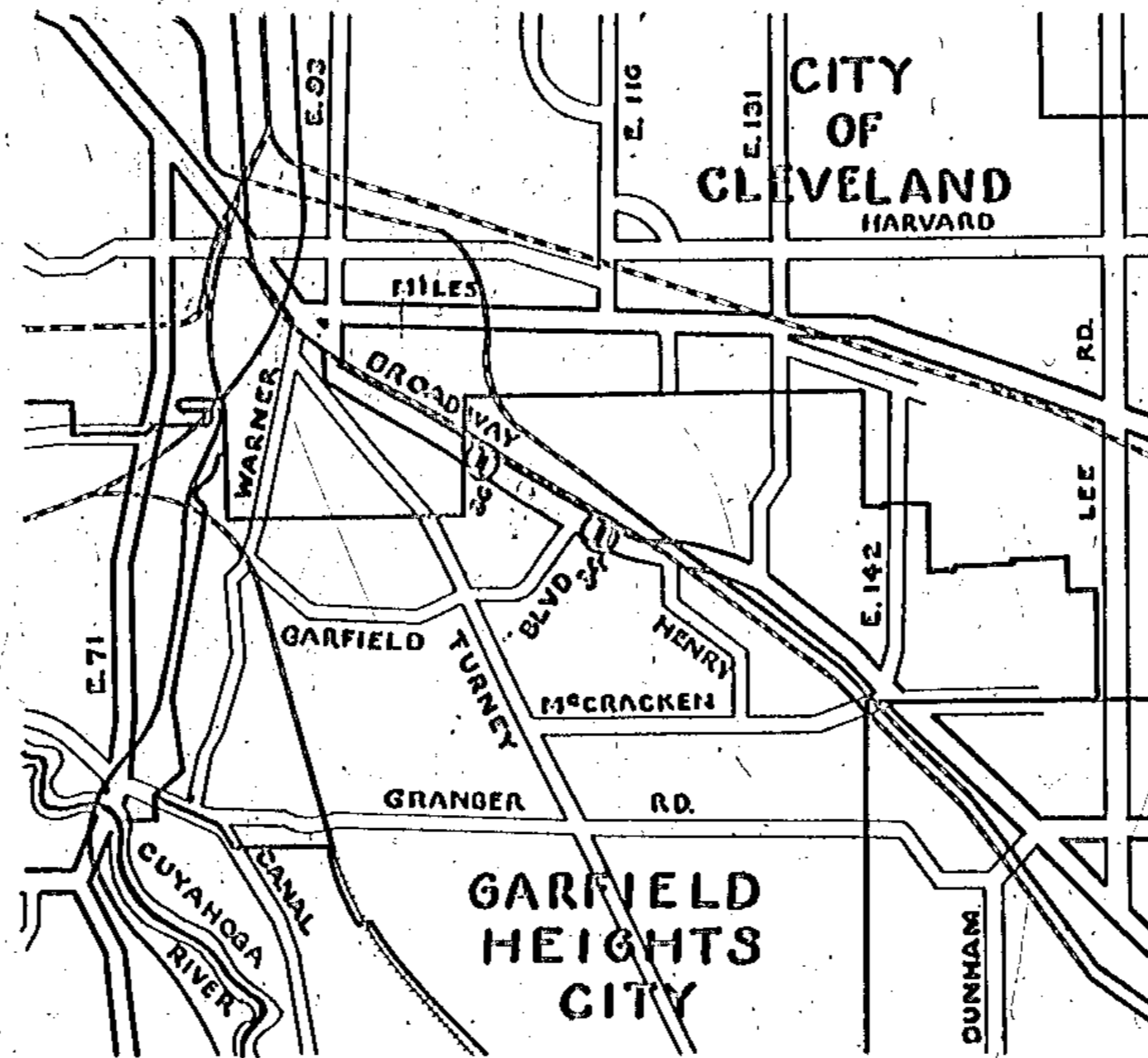
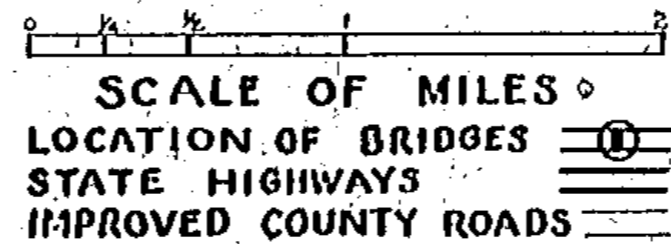


COUNTY OF CUYAHOGA
JOHN O. McWILLIAMS
 COUNTY ENGINEER
 BRIDGE DEPT.

SIDEWALK EXTENSIONS & RAILING FOR BRIDGES NO. 34 & 36
 BROADWAY
 GARFIELD HEIGHTS CITY



LOCATION PLAN



The Standard Specification of the County of Cuyahoga, Bridge Department in force on date of Contract will govern this improvement.

Approved: *A.S. Porter*
 Planning Department
 Date: 6/19/34

Approved: *W.C. Young*
 Road Department
 Date: 6/20/34

Approved: *W.E. Blaser*
 Bridge Department
 Date: 6/19/34

Approved: *John O. McWilliams*
 County Engineer
 Date: 6/20/34

Approved: *John J. Curran*
 County Commissioner
 Date: _____

Approved: *Joe J. ...*
 County Commissioner
 Date: _____

Approved: *Jack Reynolds*
 County Commissioner
 Date: 6/22/34

BROADWAY

SIDEWALK EXTENSION & RAILING
 CONTOUR F-215 REPORT 6055 BRIDGES NO. 34 & 36

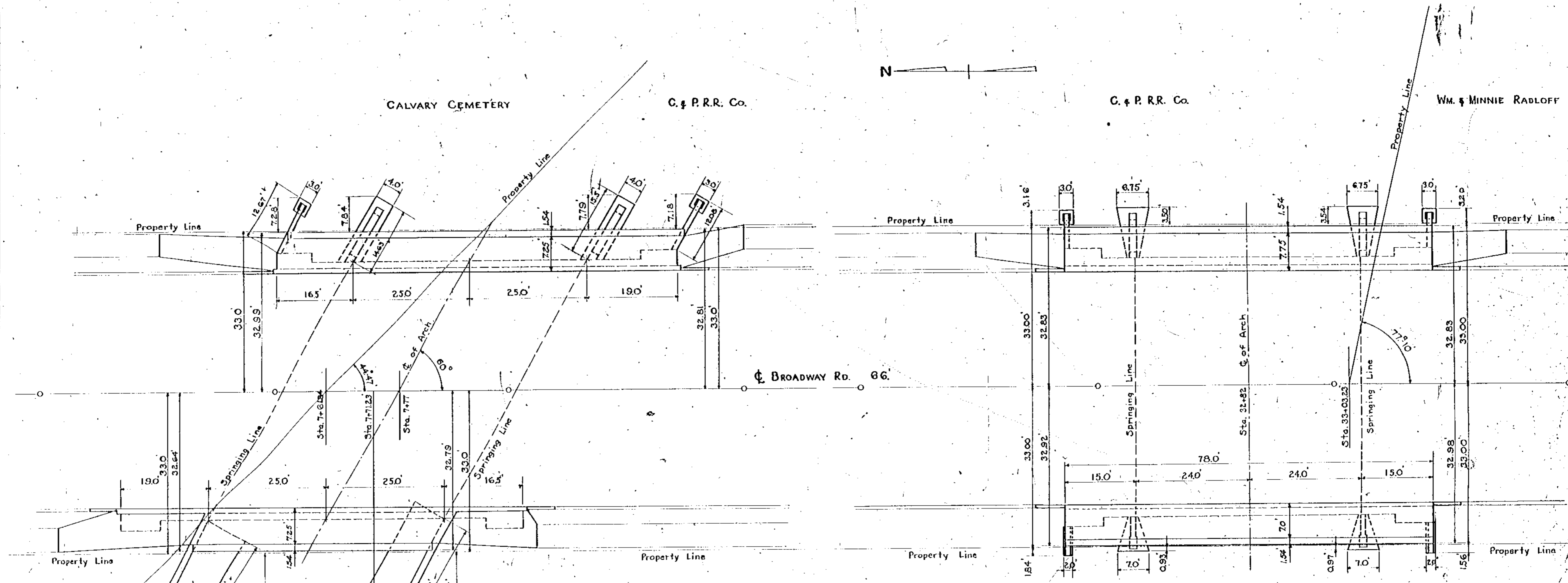
NO. B-61

BUILT BY CONTRACT

Checked

PLAN
 DRAWN BY
 CHECKED BY
 DATE

PROFILE
 DRAWN BY
 CHECKED BY
 DATE



GENERAL PLAN
 BRIDGE NO. 34

GENERAL PLAN
 BRIDGE NO. 36

***ESTIMATED QUANTITIES*
 FOR TWO BRIDGES**

Item	Description	Quantity	Unit
E-2 & Spcl.	Excavation for Structures	500	Cu. Yds.
E-2.08	Porous Backfill	50	Cu. Yds.
E-4	Borrow	100	Cu. Yds.
E-9	Trees Removed	5	
S-1	Concrete for Structures	268	Cu. Yds.
S-3	Waterproofing Type A (AES)	300	Sq. Yds.
S-4	Reinforcing Steel (sec. H-71)	28,600	Lbs.
S-5	Bridge Railing (Concrete)	300	Lin. Ft.
S-7	Structural Steel	20,000	Lbs.
S22 & Spcl.	Removal of Portions of Existing Masonry		Lump Sum.
I-9	12" V.S.P. Roadway Drainage	10	Lin. Ft.
I-11	Stone Curb (Sandstone)	40	Lin. Ft.
I-13	Concrete Sidewalk (on Approaches)	850	Sq. Ft.
T-30 & Spcl.	Brick Surface Course	64	Sq. Yds.
Spcl.	Pipe Railing	20	Lin. Ft.
Spcl.	Common Labor	150	Hrs.
Spcl.	Skilled Labor	50	Hrs.
Spcl.	Maintaining Traffic, Barricades & Lights		Lump Sum.

CITY OF CLEVELAND

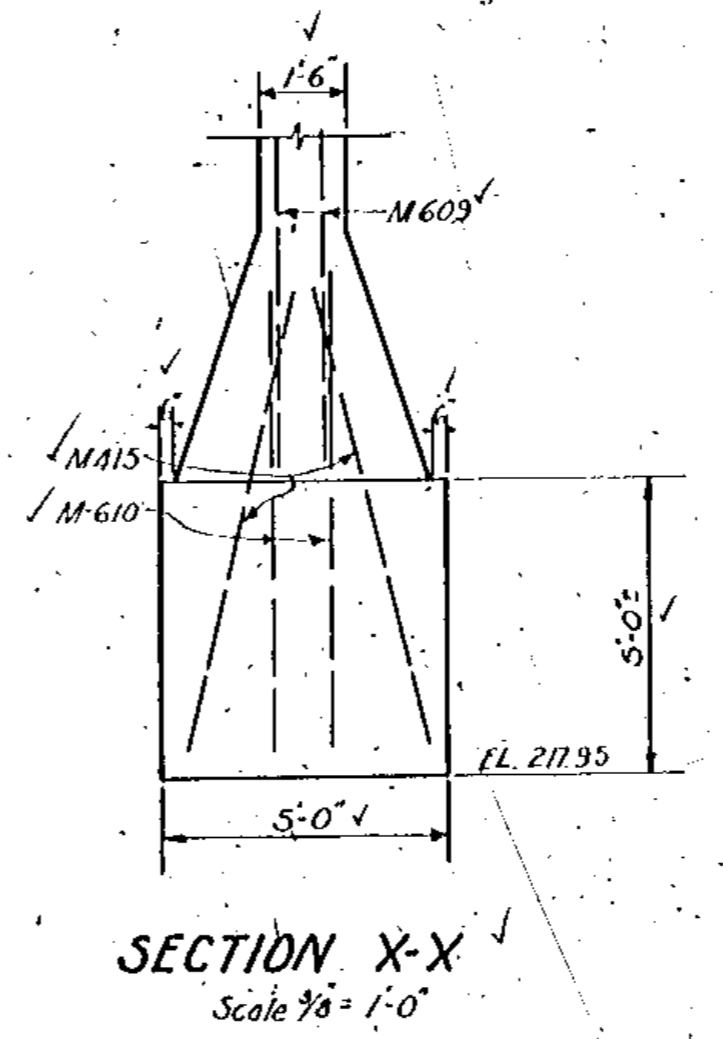
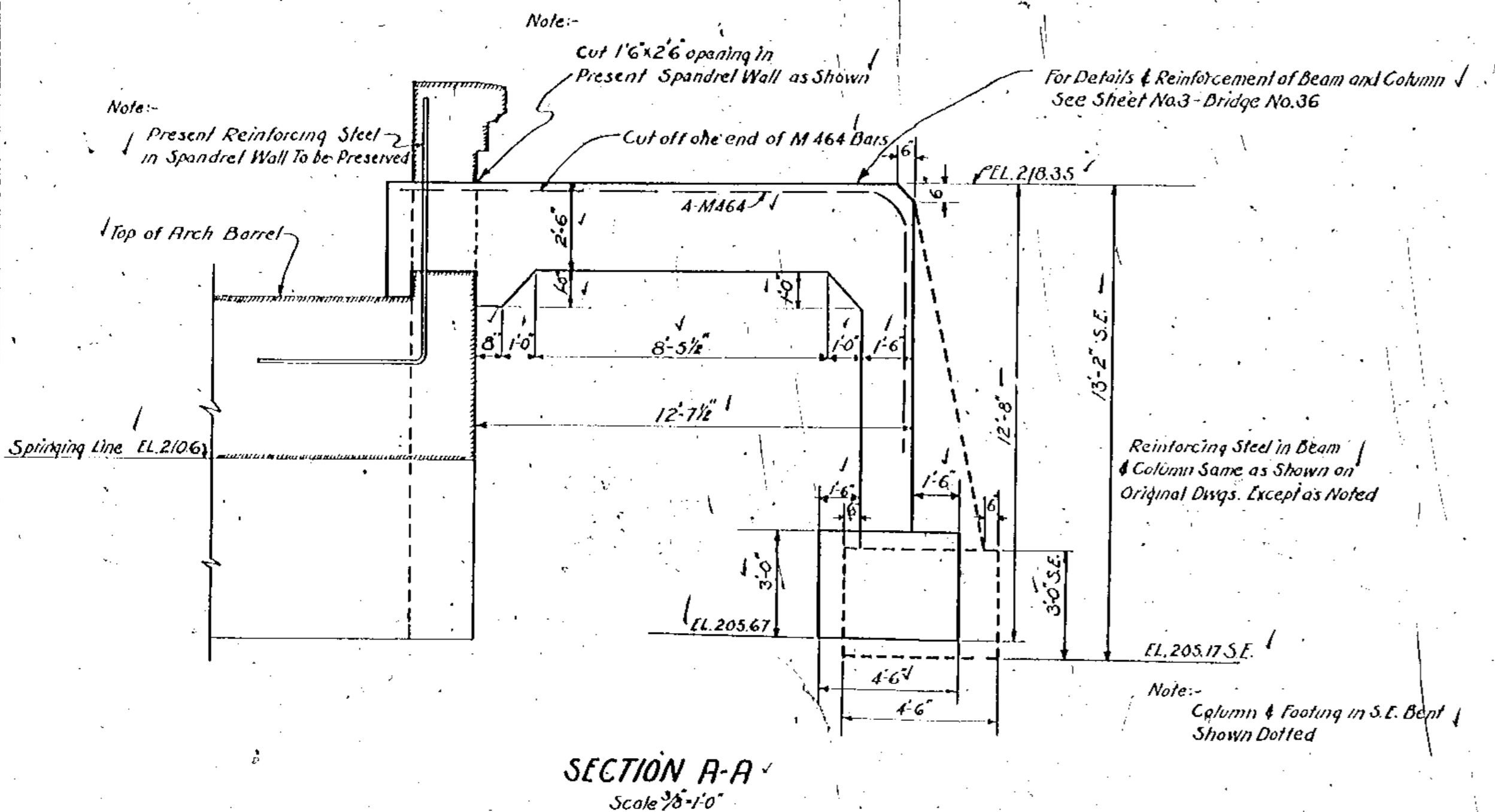
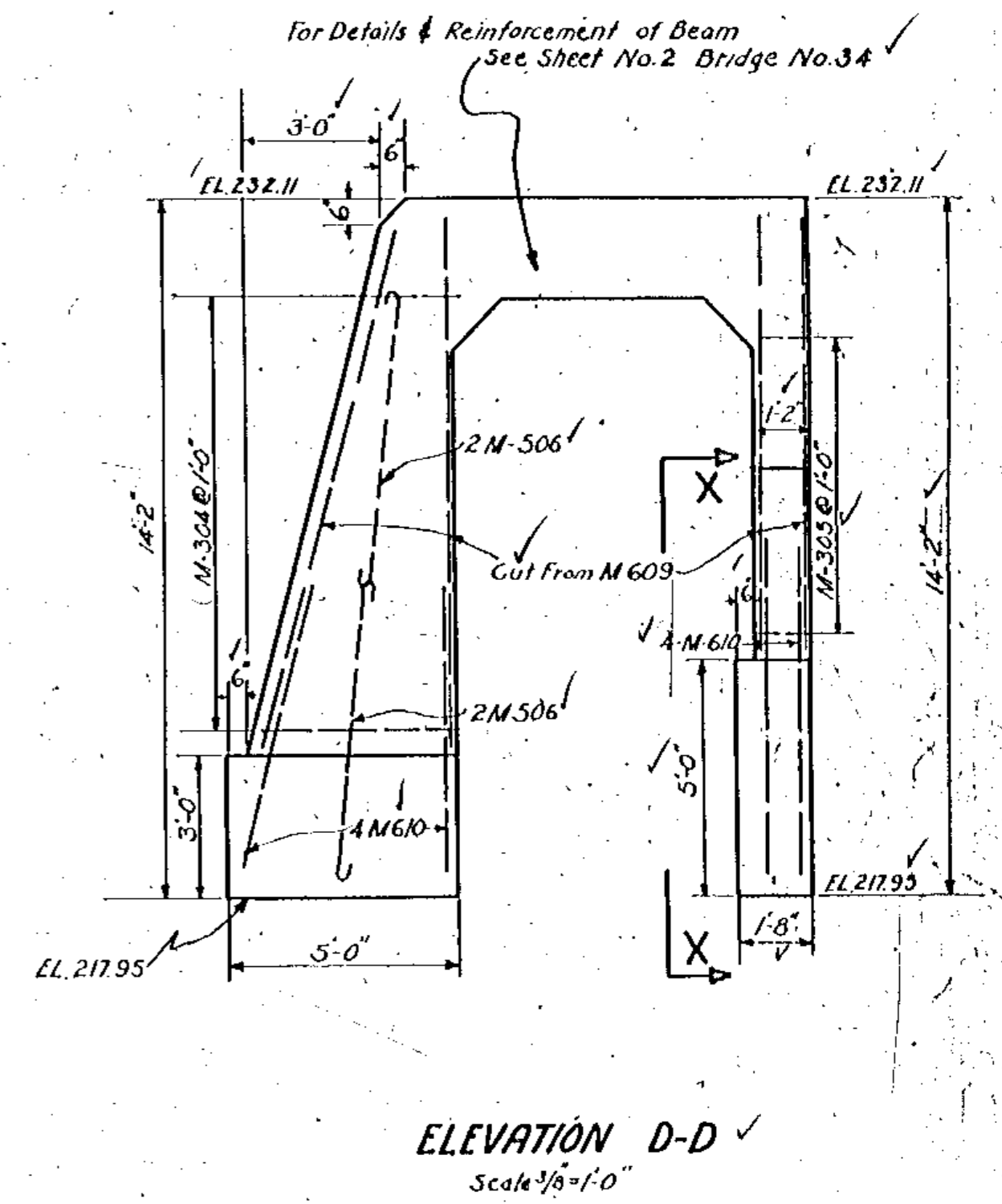
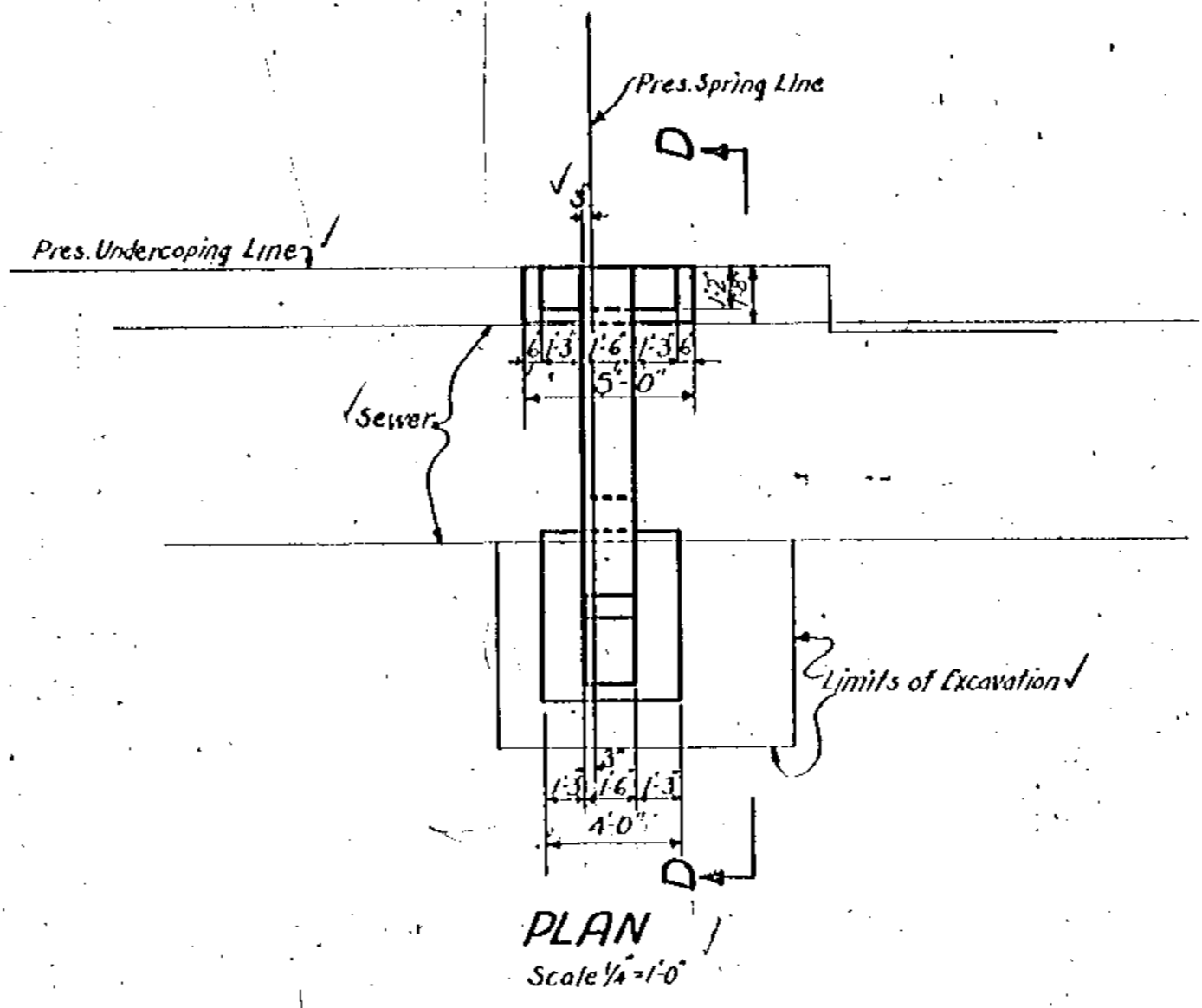
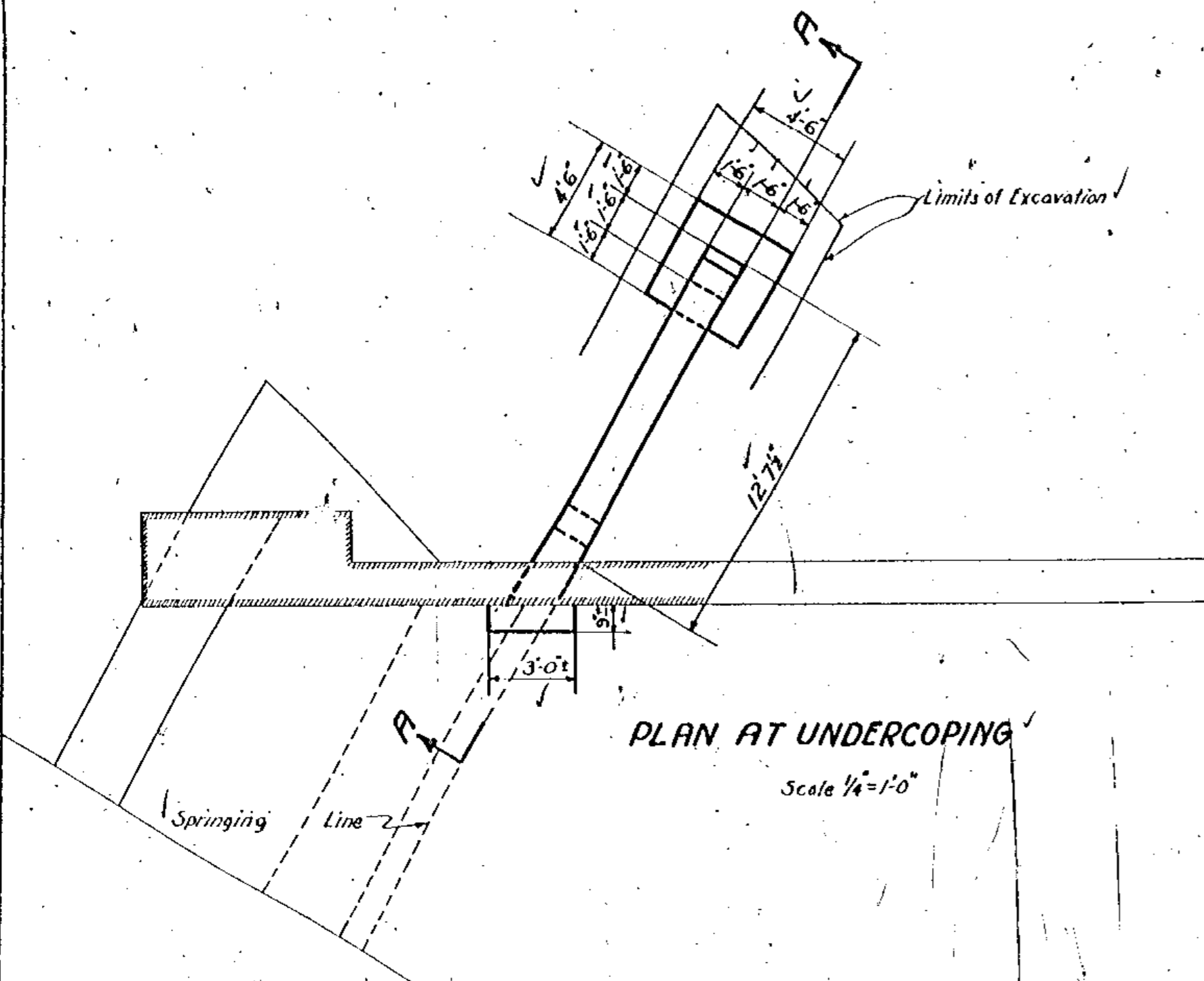
Bench Mark - Top of Existing East Coping, El. 234.80.

Bench Mark - Top of Existing Copings, El. 221.10.

Note: See Sheet MK-R for Alterations in Footings and Bents Made in The Field During Construction

BUILT BY CONTRACT

BROADWAY
 GARFIELD HEIGHTS CITY
 SIDEWALK EXTENSION & RAILING
 CONTOUR F-215 REPORT 6055 BRIDGES NOS 34 & 36
NO. B-61
 SCALE 1"=10' DATE 6/16/34
 DRAWN BY S.J.D. CHECKED BY M.C.F. REVISED



DETAILS OF N.E. BENT- BRIDGE NO. 36 AS SHOWN
DETAILS OF S.E. BENT- BRIDGE NO. 36 AS SHOWN & NOTED

DETAILS OF N.E. BENT BRIDGE NO. 3A
DETAILS OF S.E. BENT SIMILAR

BROADWAY
SIDEWALK EXTENSION & RAILING
CHANGES MADE IN FIELD
DURING CONSTRUCTION
CONTOUR F-215, REPORT 6055, BRIDGES NOS. 34 & 36
NO. B-61
SCALE Indicated
DRAWN BY C.R.M. CHECKED BY REVISOR
DATE