
Plotting V7 Files using V8i IPLOT– User Documentation

Revision Date: **October 2012**

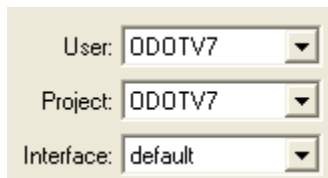
Documentation:

The following procedure is provided to assist designers in how to plot a **single** MicroStation V7 file when opening MicroStation V8i.

Notes:

- MicroStation IPLOT requires the use of print queues shared from the IPLOT Server. Trying to print using a non-IPLOT Server will generate an error.
- InterPlot Organizer does not recognize the outside border cut line if it is not a shape.
- **Prior to opening a v7design file, consult with your CADD Manager to verify you have the correct configuration file (**ODOTv7.ucf**) copied to your home directory.**

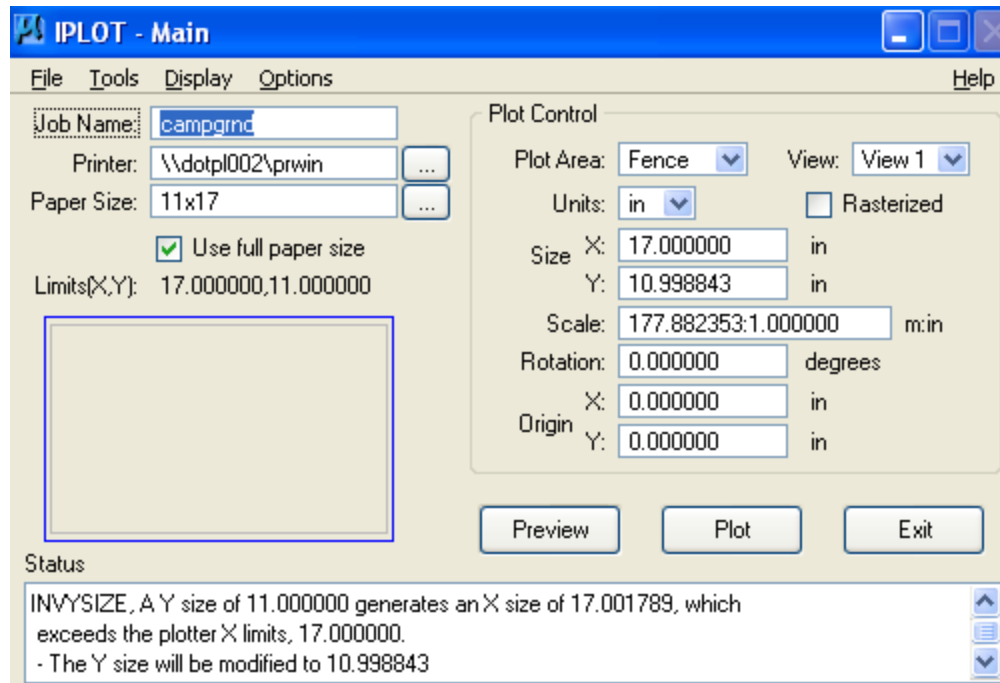
1. Start **MicroStation V8i**.
2. In the MicroStation Manager dialog box, Select **ODOTV7** for the **User** and **Project** Workspace options as shown below:



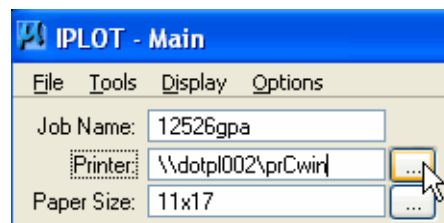
3. Select the MicroStation V7 DGN file and **Open**.
4. Place a **Fence** around the outside border cut line.

Plotting V7 Files using V8i IPLOT– User Documentation

5. Select **File > IPLOT**,
The following IPLOT dialog box will open like below:



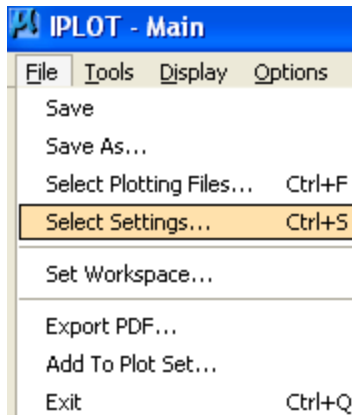
6. In the IPLOT dialog box,
Locate **Printer** and select “...” like below to choose a **Print Queue**.



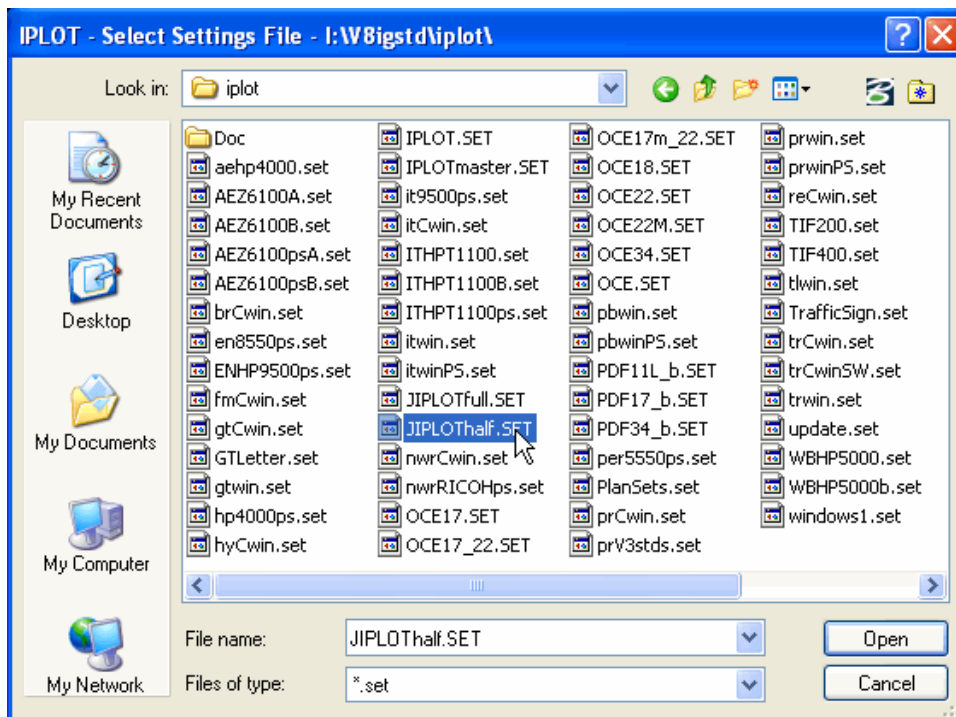
7. The Select Printer dialog box will appear,
Select your **Print Queue** and Click **OK**.

Plotting V7 Files using V8i IPLOT– User Documentation

8. Select **File > Select Settings** from the pull down list on the IPLOT Main dialog box like below:



9. The IPLOT Select Settings File dialog box opens like below:



10. Select the **Settings File** from i:\v8igstd\iplot\,

For 11"x17" Select: **JIPLoThalf.set** (The settings file sets the Pen table to *jhalf.pen*)
For 22"x 34" Select: **JIPLoTfull.set** (The settings file sets the Pen table to *jfull.pen*)

Note: Districts see your CADD Administrator or IT staff to locate the correct directory where the settings files are located.

Plotting V7 Files using V8i IPLOT– User Documentation

11. Click **Open**.
12. Select **Plot** to Print the file.
13. Click **Exit** when finished.

Contact Information:

If you have any questions, suggestions, or problems please contact the ODOT Office of **CADD and Mapping Services** CADD Support team or use the following form on the ODOT web site at:

<http://www.dot.state.oh.us/Divisions/Engineering/CADDMapping/CADD/Pages/suggestions.aspx>