

**Revision Date:**        **October 2012**

### **Documentation:**

Survey data processed using GEOPAK 2001 and mapped into a MicroStation/J design file can be easily converted for use with GEOPAK 2004 Edition and MicroStation v8.

There are three files provided by the surveyor which are used in project development:

#### **COGO Database (.gpk file)**

The GEOPAK 2001 .gpk file is directly compatible with GEOPAK 2004 edition without translation.

#### **Digital Terrain Model (.tin file)**

The GEOPAK 2001 .tin file is directly compatible with GEOPAK 2004 edition without translation.

#### **Existing Survey Design File (.dgn file)**

Two methods can be used to translate the existing ground survey data design file from v7 to v8 format:

##### **Option 1:**

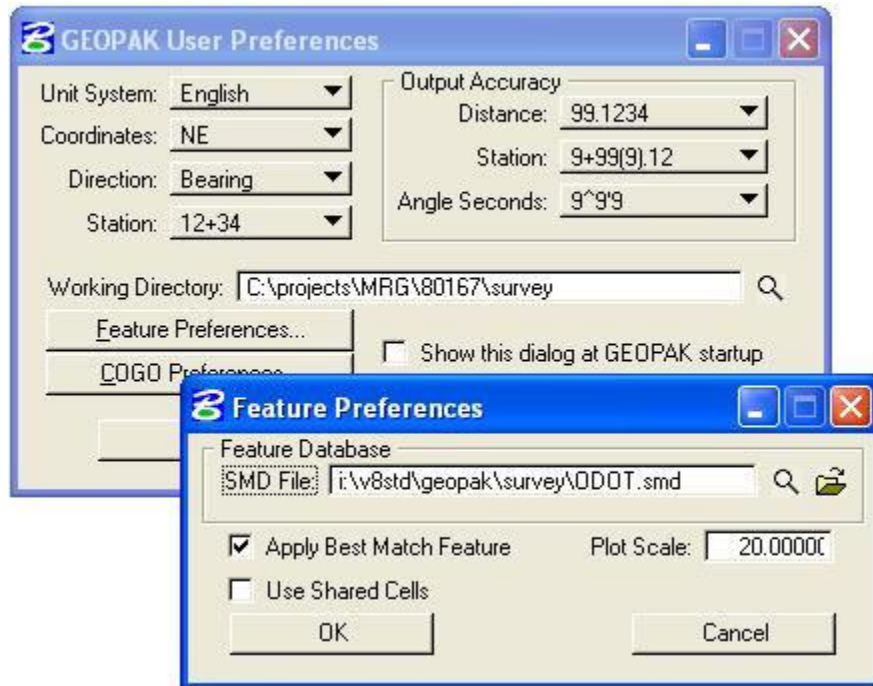
This file can be translated to v8 format using the translation table as detailed in the following document ([ODOT\\_Vol3\\_Translation.pdf](#)) available on line:

<http://www.dot.state.oh.us/Divisions/Engineering/CADDMapping/CADD/Pages/V7toV8TranslationTable.aspx>

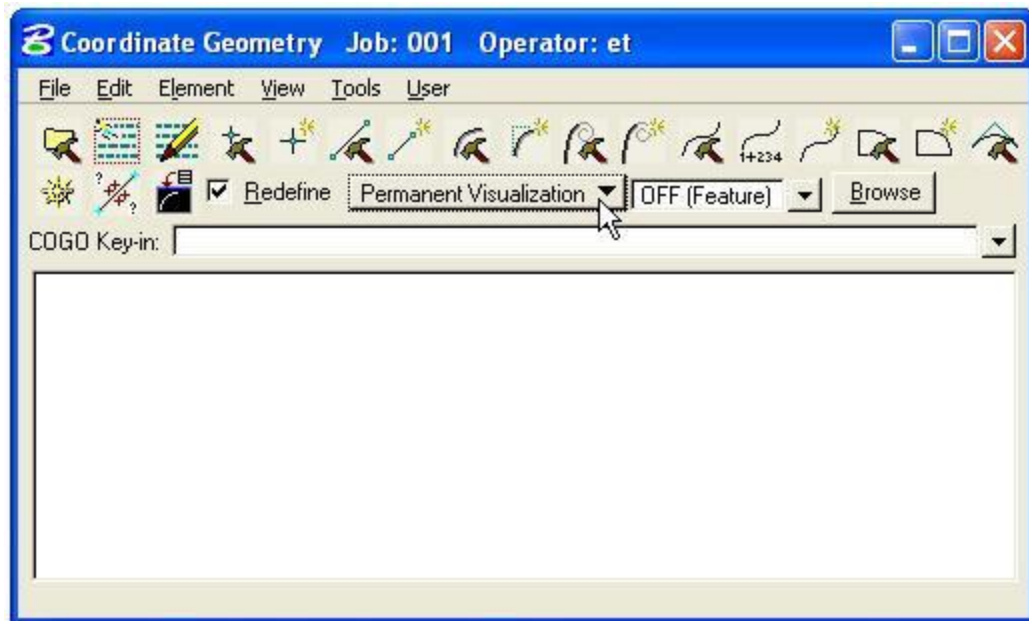
##### **Option 2:**

Since the .gpk file contains the COGO data for all the survey data, the user can simply create a new MicroStation v8 design file and then visualize the Survey data into the new design file as detailed below.

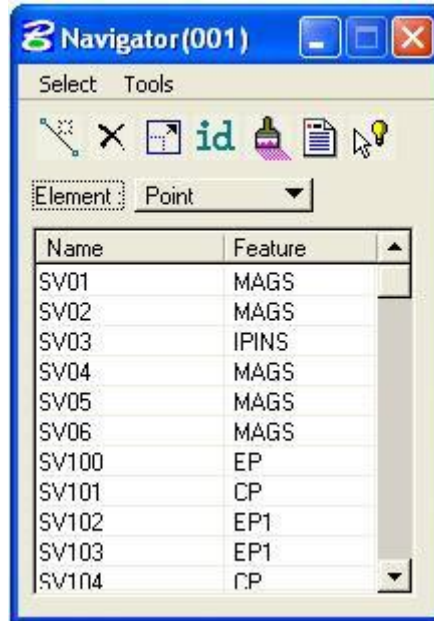
- 1 From the MicroStation pull down menu, select **Applications > GEOPAK Road > User Preferences**, and then select **Feature Preferences** to access the *Feature Preferences* dialog shown below. Make sure the SMD file is set to use the ODOT.smd file. Key in the desired **Plot Scale** as shown below. Select **OK**.



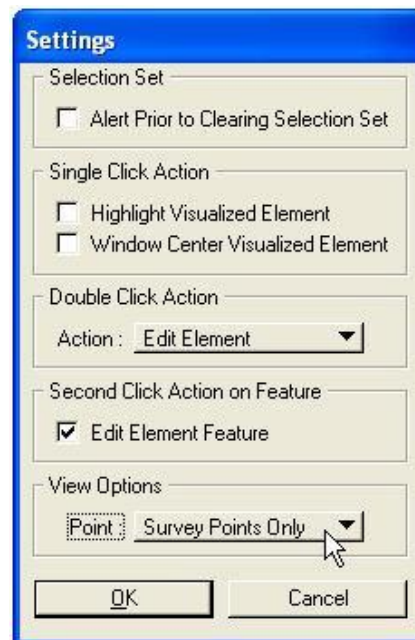
- 2 From the GEOPAK *Coordinate Geometry* dialog, toggle on **Permanent Visualization** as shown below.



- 3 From the GEOPAK *Coordinate Geometry* dialog, select **Tools > Navigator** to access the GEOPAK *Navigator dialog*, shown below.



- 4 From the *Navigator* dialog, select **Tools > Settings** to access the *Settings* dialog. Toggle the **View Options to Survey Points Only** as shown below. Select **OK**. This will filter the *Navigator* display to show only points that were generated from GEOPAK Survey.



- 5 From the Navigator dialog, select **Tools > Visualize All > Points** to draw all the Survey Points in the active design file. Then select **Tools > Visualize All > Survey Chains**.



After completion, be sure to change the **Settings** back to display **All Points**.

**Contact Information:**

If you have any questions, suggestions, or problems please contact the ODOT Office of **CADD and Mapping Services** CADD Support team or use the following form on the ODOT web site at:

<http://www.dot.state.oh.us/Divisions/Engineering/CADDMapping/CADD/Pages/suggestions.aspx>