



Application Name:	ODOTcadd_ConfigureTraining.exe
Tested MicroStation Version:	V8i (SELECTseries 4)
Tested GEOPAK/PowerGEOPAK Version:	V8i (SELECTseries 4)

Application Description

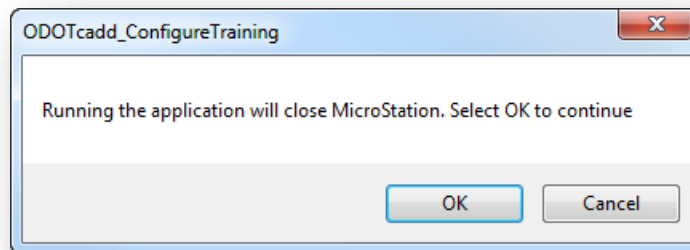
This program is used to install training file for ODOT CADD Training classes. The program will also set up the user configuration and install a shortcut for the selected training class.

Application Operation

The program is delivered with the ODOT CADD Standards in the following location:

...\\ODOTcadd\\Standards\\ODOT\\Training\\ODOTcadd_ConfigureTraining.exe

When the program is initiated, the user is prompted to close MicroStation as shown below.

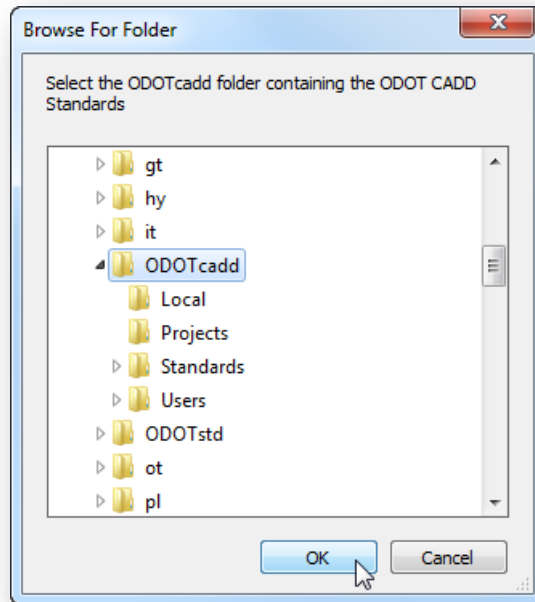


Select **OK** to continue, **Cancel** to exit.

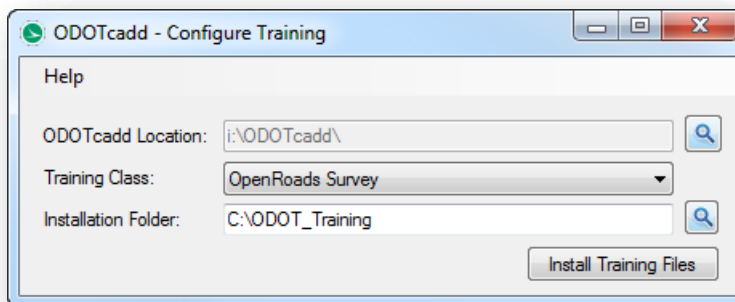
The program must access ODOT's CADD Standards for MicroStation and GEOPAK Select Series 3 in order to install the training files. These standards are housed in the "ODOTcadd" folder. The program will search for the "ODOTcadd" folder in the following location:

I:\ODOTcadd

If the program cannot find the ODOTcadd folder in the location specified above, the ***Browse for Folder*** dialog shown on the following page is opened.



Select the ODOTcadd folder and then choose the **Ok** button as shown above. After the ODOTcadd folder has been successfully identified, the dialog shown below is opened.



The dialog has the following functions:

ODOTcadd Location

This lists the location of the ODOTcadd folder. The **Browse** button is used to select or change the ODOTcadd folder location.

Training Class

Choose the ODOT training class that you wish to install.

Installation Folder

This item is used to define the parent folder used to house the training class folders. The default location for the training files is set to *C:\ODOT_Training* as shown above.

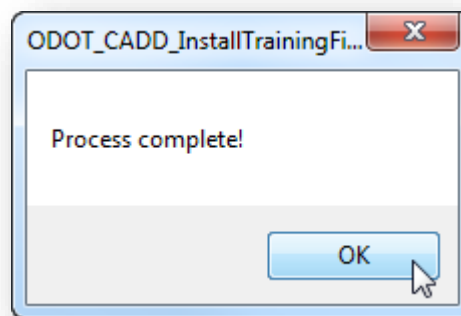


This **Installation Folder** path can be changed, however if the location is changed it will be necessary to manually edit the **Target** for the MicroStation shortcut that is created when the training files are installed. See *Editing the Training Shortcut* below for more information.

If you change the installation folder, the selected folder will automatically be appended with the “\ODOT_Training” folder name. For example, selecting the path *W:\myFiles* will result in an installation folder of *W:\myFiles\ODOT_Training*.

Install Files

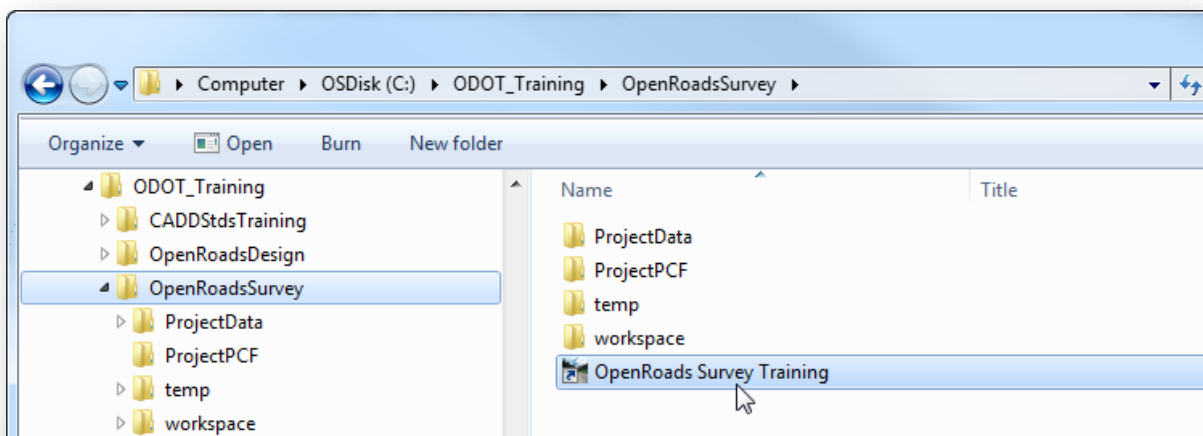
Select this button to begin the installation process. Upon completion, you will be notified as shown below. If a previous installation of the training files exists on the computer, you will be prompted to remove the old files.



Editing the Training Shortcut

In addition to copying the necessary training files for the selected class from the CADD Standards to the selected folder, the program will copy a shortcut that must be used to launch MicroStation with the proper user configuration for the training material.

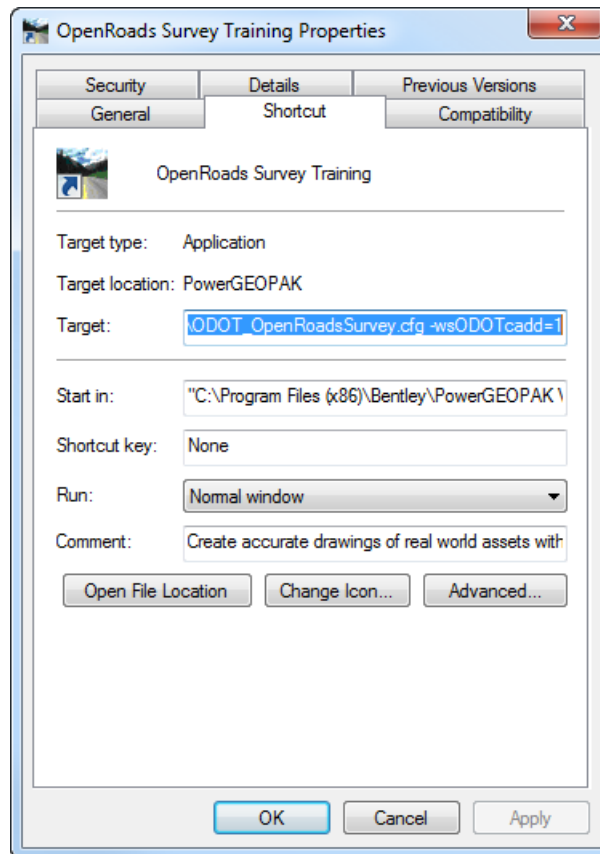
For example, after installing the training files for the OpenRoads Survey class to the default location, the shortcut shown below is located in the following folder: *C:\ODOT_Training\OpenRoadsSurvey*





If you have elected to install the training files to a different location, the shortcut must be manually edited to target the correct path for the training configuration. Take the following steps to edit the shortcut:

Right-click on the shortcut and then select the **Properties** option. The dialog shown on the following page is opened.



The **Target** for the shortcut includes the path to launch MicroStation, a workspace switch to launch GEOPAK, a workspace configuration definition (defined by the **-wc** syntax) to launch the training configuration, and another workspace switch (defined by the **-ws** syntax) to load the ODOTcadd Standards. The default value for this switch is set as follows in the shortcut for the OpenRoads Survey class:

```
"C:\Program Files (x86)\Bentley\MicroStation V8i (SELECTseries)\MicroStation\ustation.exe"  
-wsLoad_GEOPAK_SS4=1  
-wcC:\ODOT_Training\OpenRoadsSurvey\workspace\ODOT_OpenRoadsSurvey.cfg  
-wsODOTcadd=1
```

If you have elected to install the training files to a location other than the default, the path for the workspace must be manually edited to identify the path where you have installed the training files.



For example, if the installation folder was changed to *W:\myFiles\ODOT_Training*, the path defined by the *-wc* syntax would be edited as follows:

-wcW:\myFiles\ODOT_Training\OpenRoadsSurvey\workspace\ODOT_OpenRoadsSurvey.cfg

IMPORTANT!

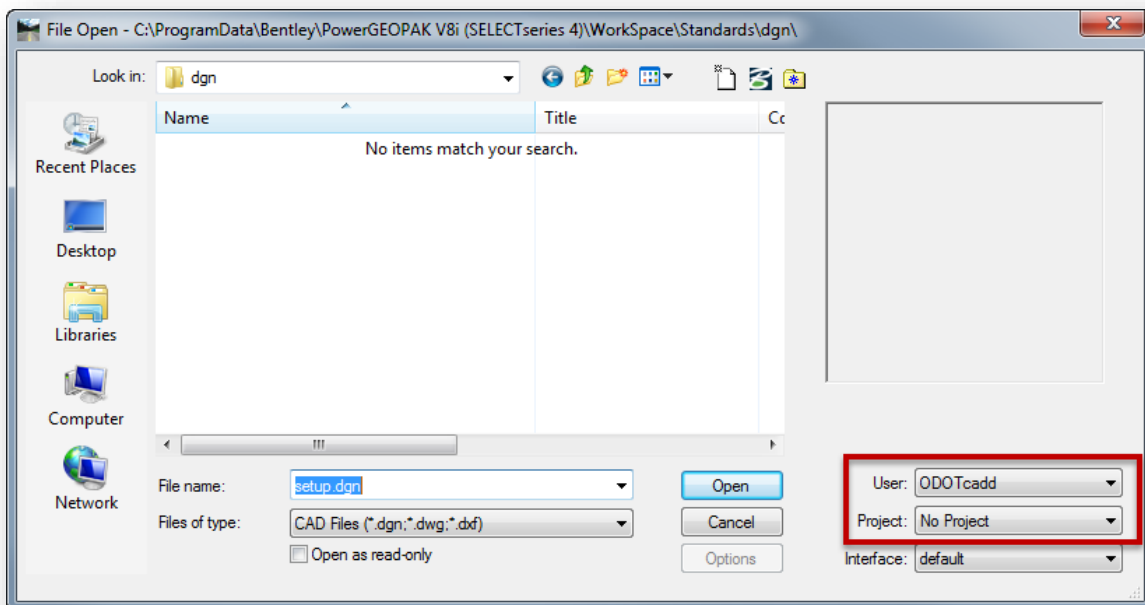
Be careful not to delete or edit anything else in the **Target** field. Also be careful to retain the path to the configuration file from the *ODOT_Training* folder onwards.

Opening MicroStation for a specific training course

Each ODOT training course has its own shortcut to launch MicroStation with a unique configuration specifically for the class. All of the configuration information is contained within the folder for each class and therefore will not interfere with any other configurations. The ODOTcadd Standards are not contained in the training folders; they are read from your site installation.

To access the files for a specific training class, double-click the shortcut in the course folder to launch MicroStation. In the example below, the shortcut for the OpenRoads Survey course was selected.

The MicroStation Manager dialog is opened. The **User** configuration file is set to **ODOTcadd** in the example below, and the **Project** configuration file is set to **No Project** as shown below.



Consult the training guide for the installed class for additional information. Training guides can be found in the *\ODOTcadd\Standards\ODOT\Training\Guides* folder.



Contacts

If you have any questions, suggestions, or problem with this application please contact the ODOT Office of CADD and Mapping Services by use of the following form on the ODOT website:

http://www.dot.state.oh.us/Divisions/Engineering/CaddMapping/CADD_Services/Support/Pages/ServiceRequest.aspx

Acknowledgements

This program was written for the Ohio Department of Transportation, Office of CADD and Mapping Services by Eric Thomas, Eric Thomas Consulting, LLC.



Eric Thomas
CONSULTING LLC
www.ericthomasconsulting.com