



Application Name:	ODOTcadd_ClientConfigurationTool.exe
Tested MicroStation Version:	Not Applicable
Tested GEOPAK/OpenRoads Version:	Not Applicable

Application Description

This application is used to configure the local computer to open MicroStation/GEOPAK V8i (SELECTseries 4), or PowerGEOPAK (SELECTseries 4), to access the "ODOTcadd" Standards.

The application also provides the option to set up the configuration for access to the ODOT's legacy V8istd CADD Standards.

MicroStation or PowerGEOPAK must be installed on the local computer to use this application.

The ODOT CADD Standards "ODOTcadd" must be installed either on a network share or on the local computer.

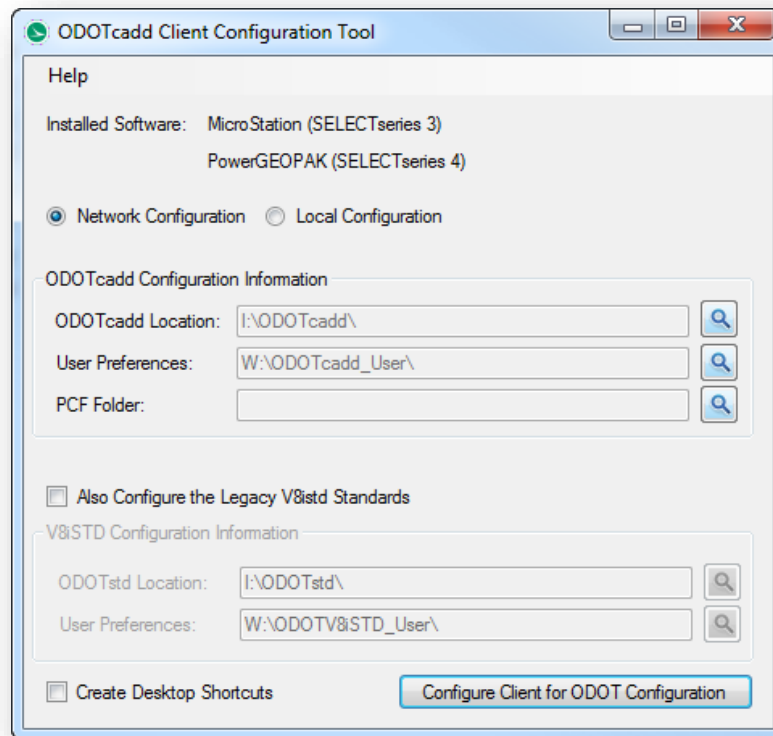
If you choose the option to configure the legacy V8istd CADD Standards, the legacy standards must also be installed on a network share or the local computer.

Application Operation

The program is delivered with the ODOT CADD Standards in the following location:

`...\ODOTcadd\Standards\ODOT\Utilities\ODOTcadd_ClientConfigurationTool.exe`

When the program is initiated, the dialog shown below is opened.



Choosing the **Network Configuration** or **Local Configuration** option sets the default folders that the program will use for this configuration. These folders can be changed by the user.

Network Configuration

Choose this option if the ODOT CADD Standards have been installed on a network share.

When the **Network Configuration** option is selected, the folders are defined as follows for a typical ODOT installation:

ODOTcadd Configuration Information

- ODOTcadd Location** (Typically I:\ODOTcadd\)
- User Preferences** (Typically W:\ODOTcadd_User\)
- PCF Folder** (Typically I:\ProjectPCF)

If the option **Also Configure the Legacy V8istd Standards** is toggled on, the folders are typically defined as shown below:

V8iSTD Configuration Information

- ODOTstd Location** (Typically I:\ODOTstd\)
- User Preferences** (Typically W:\ODOTV8iSTD_User\)



Local Configuration

Choose this option if the ODOT CADD Standards are installed on the local computer.

This option is useful for a Lap-Top configuration where all the files are on the local computer. The folders are defined as follows for a typical ODOT installation:

ODOTcadd Configuration Information

ODOTcadd Location (Typically C:\ODOTcadd\)

User Preferences (Typically C:\ODOTcadd_User\)

PCF Folder (Typically C:\ProjectPCF)

If the option **Also Configure the Legacy V8istd Standards** is toggled on, the folders are typically defined as shown below:

V8iSTD Configuration Information

ODOTstd Location (Typically C:\ODOTstd\)

User Preferences (Typically C:\ODOTV8iSTD_User\)

Note that in either case (Network or Local) the folders can be defined as necessary to best meet site specific needs.

Version 2.0.0.8 adds the ability to process a BAT file to create the default folders for the user preferences. The BAT file must be named and located in the following folder:

```
..\ODOTcadd\Local\CreateConfigFolders.bat
```

This BAT file can be customized as necessary to define the default folders. The BAT file is processed when the Local Configuration or the Network Configuration option buttons are selected. The BAT file is intended for internal ODOT use and is not distributed for users external to ODOT.

The **Create Desktop Shortcuts** option can be used to copy the necessary shortcuts from the ODOTcadd Standards to the current users' desktop. For a typical ODOT computer, the shortcuts are already included with the standard build and do not need to be placed on the users' desktop.

Select the **Configure Client for ODOT Configuration** button. The application will perform the following steps:

- Close MicroStation or PowerGEOPAK if either is running.
- Delete all files in c:\Temp
- Delete all files in the folder specified for the User Preferences for both ODOTcadd and V8istd.
- Delete any "z_ODOT_redirect*.cfg" files found in the appropriate Bentley \workspace\standards\ folder.
- Copy the appropriate desktop shortcuts from the \ODOTcadd\Standards\config\shortcuts folder to the local computer desktop if the **Create Desktop Shortcuts** option is toggled on.
- Create the following folders if they do not exist:
 - c:\Temp
 - c:\Temp\rsc



c:\Temp\scr
c:\Temp\sketchupimage
c:\Temp\tmp

- Copy the necessary configuration files from \ODOTcadd\Standards\config\Standards to the folders specified for the ODOTcadd User Preferences and the V8iSTD User Preferences.
- Create a new z_ODOT_redirect.cfg file in the Bentley \workspace\standards\ folder using the settings specified in this program.

After running this program you should have desktop shortcuts to launch MicroStation/GEOPAK or PowerGEOPAK with the legacy V8istd CADD Standards or with the new ODOTcadd Standards.

The desktop shortcuts have a workspace switch variable (-wsODOTcadd or -wsODOTv8istd) defined. When MicroStation is launched with one of these desktop shortcuts, the z_ODOT_redirect.cfg file is read to load the appropriate ODOTcadd Standards or V8istd Standards depending on which variable is defined by the selected shortcut.

For more information on the ODOT configuration for MicroStation (SELECTseries 3) or PowerGEOPAK (SELECTseries 3 or 4) see the following file:

\ODOTcadd\Standards\ReadMe-ODOTcadd.pdf

Contacts

If you have any questions, suggestions, or problem with this application please contact the ODOT Office of CADD and Mapping Services by use of the following form on the ODOT website:

http://www.dot.state.oh.us/Divisions/Engineering/CaddMapping/CADD_Services/Support/Pages/ServiceRequest.aspx

Acknowledgements

This program was written for the Ohio Department of Transportation, Office of CADD and Mapping Services by Eric Thomas, Eric Thomas Consulting, LLC.



Eric Thomas
CONSULTING LLC
www.ericthomasconsulting.com