

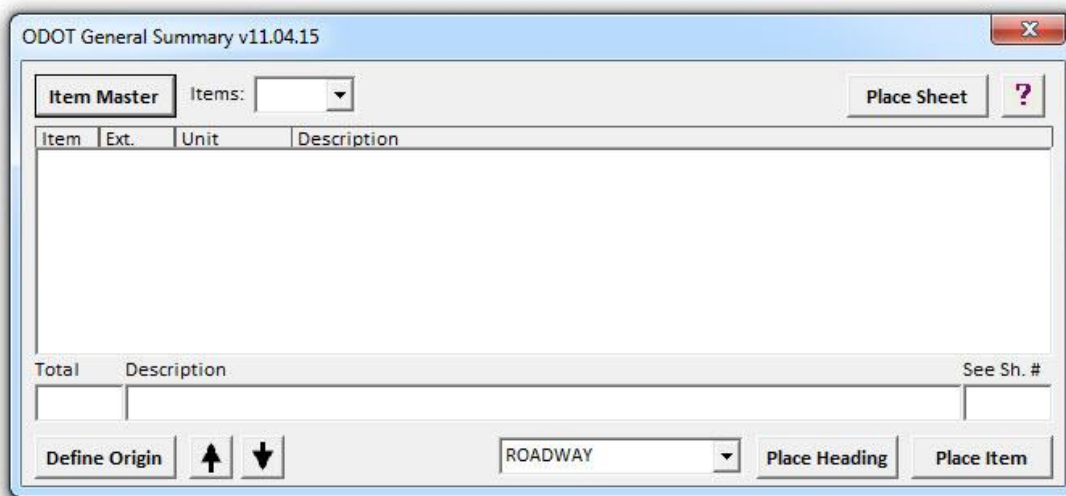
Application Name:	ODOT_GeneralSummary.mvba
Current version:	V11.04.15
Required MicroStation Version:	08.09.04.51 or higher
Required GEOPAK Version:	Not Applicable

ODOT_GeneralSummary.mvba is used to place ODOT Pay Item quantities on a standard ODOT General Summary table.

The application can be loaded from the ODOT pull down menu by selecting **ODOT > Drafting Apps > General Summary**, or by the following key-in command:

```
vba load ODOT_GeneralSummary.mvba; vba run runGenSum
```

When the application is loaded, the dialog shown below is opened:



Two supporting files are required by the application.

1. The ODOT Standard cell, GENSUM, which can be found in the cell library ODOT_Sheets.cel , is used for the summary table.
2. The pay items are defined in a .dat file which can be found in the following folder:

`\ODOTstd\v8istd\vba\data\`

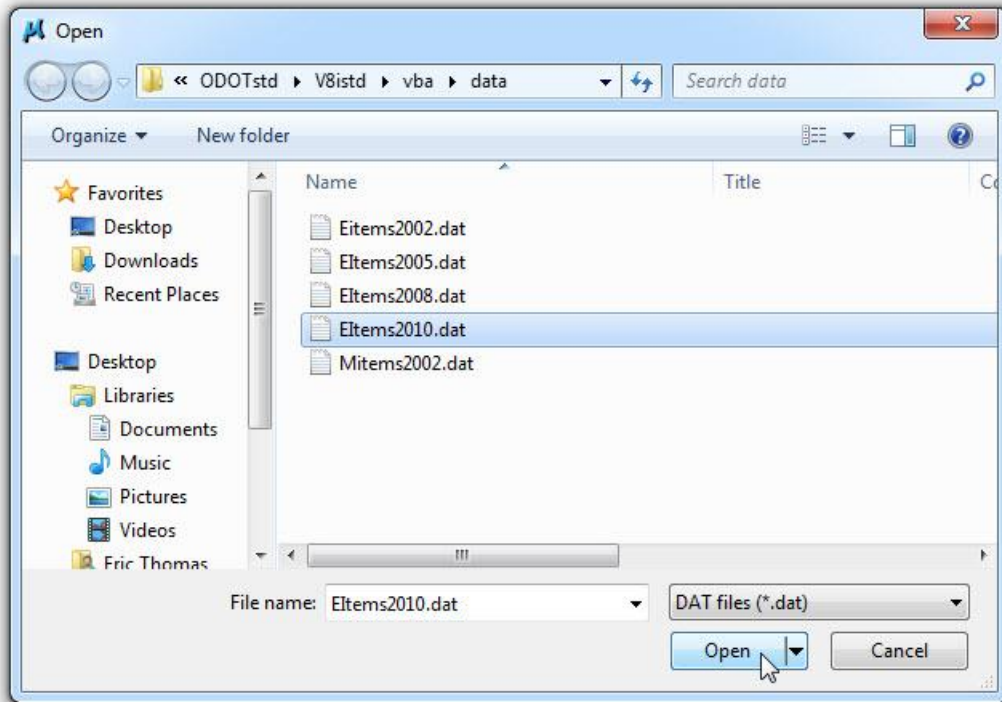
The various dialog options are described over the following pages.

Place Sheet

Select the **Place Sheet** command button to place a general summary sheet cell in the active design model. The cell GENSUM, located in ODOT_Sheets.cell, is placed at the location specified by the user.

Item Master

Select the Item Master command button to choose the desired item master .dat file. The ODOT provided .dat files are located in the \ODOTstd\V81std\vba\data\ folder as shown below.



After the .dat file is selected, the ODOT General Summary dialog box displays the available pay items as shown on the following page.

Place Item

Select the **Place Item** button to place the currently selected pay item in the active model at the current origin location. After insertion, the current origin moved down to the next row.

The **Total** and **See Sheet Number** values can be entered by the user before selecting the **Place Item** button.

An example of several items placed on the General Summary sheet is shown below.

ITEM	ITEM EXT.	GRAND TOTAL	UNIT	DESCRIPTION	SEE SHEET NO.	CALCULATED	CHECKED
				ROADWAY			
201	11000	LUMP		CLEARING AND GRUBBING			
202	23000	32730	SO-YD	PAVEMENT REMOVED			
202	23500	1503	SO-YD	WEARING COURSE REMOVED			
202	32000	1953	FT	CURB REMOVED			
202	32001	927	FT	CURB REMOVED, AS PER PLAN	105		
202	38000	12687.5	FT	GUARDRAIL REMOVED			
202	38700	34	EACH	GUARDRAIL POST REMOVED			

ODOT General Summary v11.04.15

Item Master Items: 202 Place Sheet ?

Item	Ext.	Unit	Description
202	58401	EACH	INLET ABANDONED, AS PER PLAN
202	58500	EACH	CATCH BASIN ABANDONED
202	58501	EACH	CATCH BASIN ABANDONED, AS PER PLAN
202	58600	EACH	CATCH BASIN OR INLET ABANDONED
202	58601	EACH	CATCH BASIN OR INLET ABANDONED, AS PER PLAN
202	58700	EACH	MANHOLE ABANDONED
202	58701	EACH	MANHOLE ABANDONED, AS PER PLAN
202	60000	EACH	MONUMENT ASSEMBLY ABANDONED
202	60010	EACH	MONUMENT ASSEMBLY REMOVED

Total Description See Sh. #

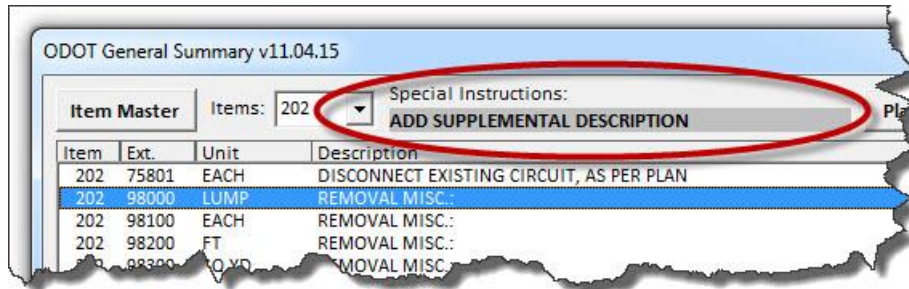
3 CATCH BASIN ABANDONED

Define Origin ↑ ↓ ROADWAY Place Heading Place Item

GENERAL SUMMARY

Special Instructions

If the selected item includes and special instructions, the instructions are displayed at the top of the dialog as shown below.



Contacts

If you have any questions, suggestions, or problems please contact the ODOT Office of CADD and Mapping Services CADD Support team or use the following form on the ODOT web site at:

<http://www.dot.state.oh.us/Divisions/Engineering/CADDMapping/CADD/Pages/suggestions.aspx>