

Purpose & Intent

There was a time when you could determine the rotation of your design file's active view by merely keying in the query "RV=?". For several years now, though, this simple command has not been available. You may still set a new view rotation with the "RV" key-ins, but you can't easily get what the current rotation.

For some of our design processes, the view rotation value is desirable and, especially for some Geotechnical work, even necessary. The purpose of this simple custom program is to take over where Bentley has left off – to provide the user with the current view rotation value.

How It Works

When the program is active, the user need only click in the view for which he/she wants to know the rotation. The program will access the view's object, read its rotation, and display the value in the message area of the MicroStation status bar.

Starting the Program

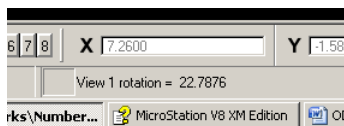
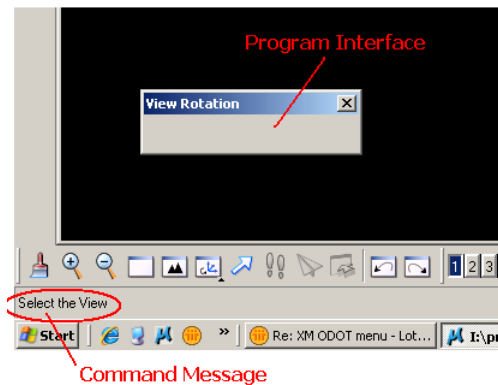
To start the program, select "ODOT>Drafting Apps>Get View Rotation" from the main menu bar.

If you do not have the ODOT menu item, or you have the ODOT item but it does not contain a selection for Get View Rotation, you will need to load and the program via the VBA Project Manager Dialog. Select "Utilities>Macro>Project Manager" from the main menu bar, use the dialog's icons to navigate to the V8istd directory, go to the vba sub-folder, and select ODOT_GetViewRotation.mvba. The program may then be activated via the dialog's run icon. For complete details on working with the VBA Project manager, refer to the MicroStation help.

Step by Step

When the program is activated, its main (and only) interface will appear on the screen and the command "Select a View" will appear in the far left section of the status bar, as shown to the right.

Enter a data point in the view for which you want the rotation, and the program will immediately respond by showing the select view's number and rotation, in degrees, in the message portion of the status bar, as shown below.



The program will remain available until you close its interface. If you leave it open and move on to other tools/activities it will become inactive. To use it again, merely click on the window (bottom) portion of the interface to reactivate it.

Caveats

There are no known bugs at this time.

Contacts

If you have any questions, suggestions, or problems please contact the ODOT Office of CADD and Mapping Services CADD Support team or use the following form on the ODOT web site at:

<http://www.dot.state.oh.us/Divisions/Engineering/CADDMapping/CADD/Pages/suggestions.aspx>