

Purpose

A project's identification (PID) number will sometimes change during the course of the design phase. The ODOT_PIDChange.exe application handles the associated folder, file and attachment name changes in the project's directory.

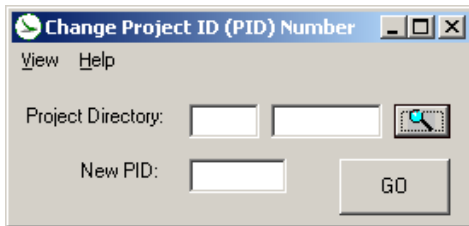
Requirements

In order for the application to perform correctly and thoroughly: (1) the project's directory structure and file naming must be in conformance with the CADD Standards; (2) access to the project files must be restricted when the program is in use, and; (3) the user must have write permission to the entire project directory.


The application is an administrative tool and is intended for use by an administrator, not by a "rank and file" user.

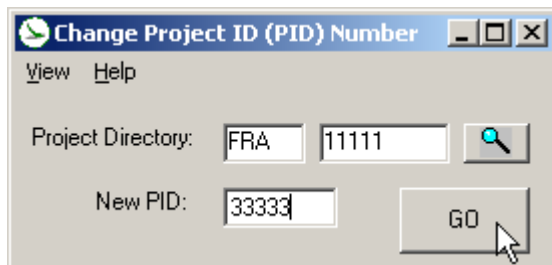
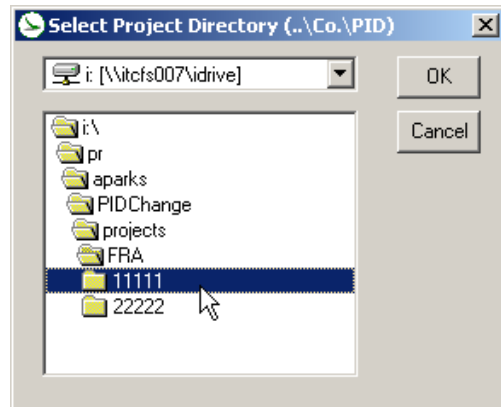
Instructions

The user has to provide very little information or interaction to the application -- the project directory and the new PID number.



The application opens with the main user form shown to the left. Unless the local computer upon which it is running is currently set to a project directory, all information fields will initially appear as blanks.

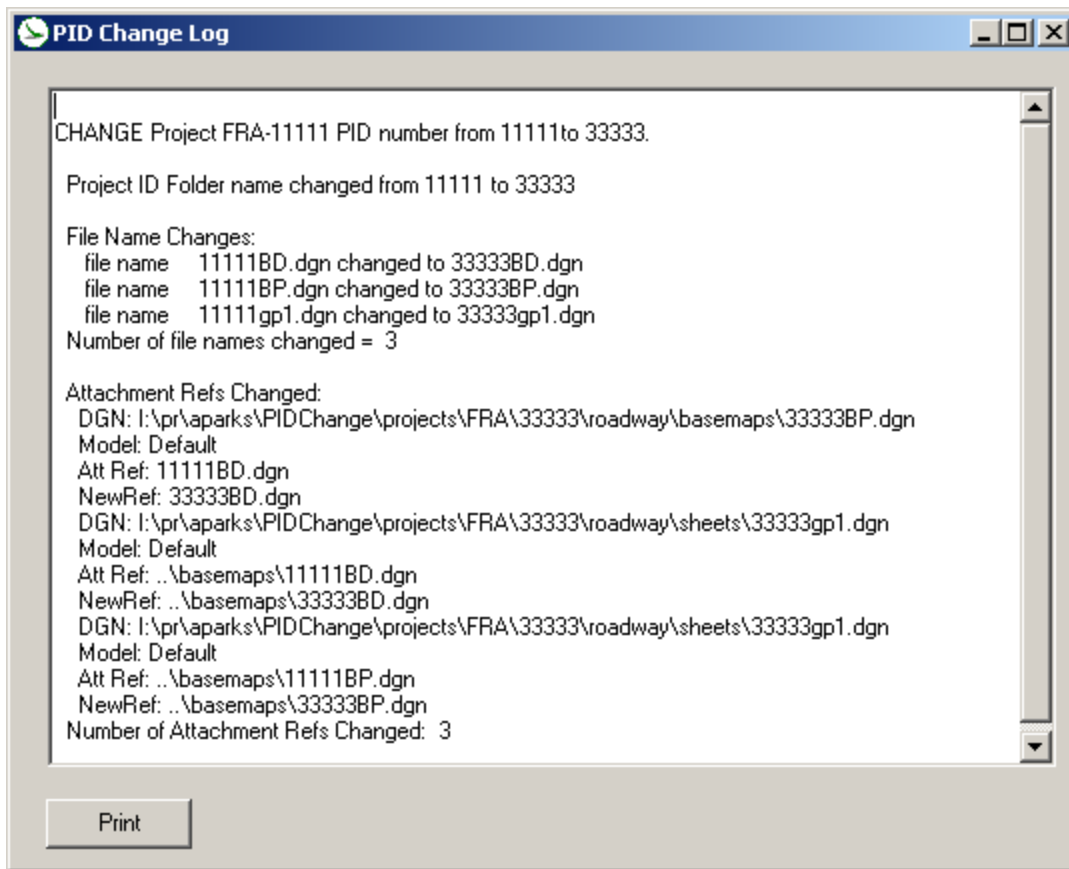
The Project Directory fields do not accept typed input. You must click on the browse button  to open the directory dialog box.



Once a selection is made, and the program ascertains that the directory/subdirectory constitute a legitimate project directory (3-letter county abbreviation, 5-digit PID number), the main form will populate its Project Directory fields.

Enter the new 5-digit PID and click on the GO button.

Clicking the GO button starts processing and also makes the report log visible. The report log "fills in" as the program identifies and executes the changes:



The user may print or clear the log after the processing is complete.

The main form has two menu items, View and Help. Under View, there is only one selection, which brings up the report form if it is not already on the screen. Under Help, there is an option for Instructions, which is a static form that summarizes the steps for using the application. There is also an About option under Help.

Considerations

Directory structures and file names that are not compliant with the ODOT standards may work to some extent with the program if, at the least, the county abbreviation and PID subdirectory structures/names are in conformance. The degree to which it will work – i.e., how many changes it will find and process – depends upon how consistent the file names are with the Standards. Names that are out of Standard will not be found at all, ever.

Below the PID-level folder name change, the program does not stop processing for permissions violations; it merely writes an error message and moves on to the next file or reference. These "missed" name changes may be addressed manually or by very carefully changing the PID back to the old value, correcting the permissions problems, and re-running the change.

The program is slow, particularly the reference attachment checking and repairing, and especially on systems that do not have Windows XP Service Pack 2. A message appears to the right of the report form's print button to remind you of this. Also, the print and clear buttons are not enabled until processing is finished.

Contacts

If you have any questions, suggestions, or problems please contact the ODOT Office of CADD and Mapping Services CADD Support team or use the following form on the ODOT web site at:

<http://www.dot.state.oh.us/Divisions/Engineering/CADDMapping/CADD/Pages/suggestions.aspx>