

| | |
|---------------------------------------|------------------------|
| Application Name: | ODOT_SLM_Stations.mvba |
| Current version: | V12.01.20 |
| Required MicroStation Version: | MicroStation v8i |
| Required GEOPAK Version: | GEOPAK v8i |

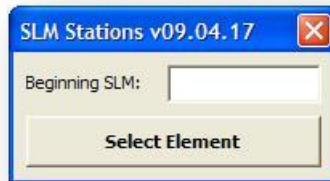
The **ODOT_SLM_Stations.mvba** application is used to draw stations on the selected MicroStation element in Straight Line Mileage (SLM) Format.

Key in the following command to activate the application:

vba load ODOT_SLM_Stations.mvba;vba run slmMain

The application can also be selected from the ODOT pull down menu.

The dialog shown below is opened.



Beginning SLM

Key in the beginning SLM Station value

Select Element

Pick this button, and then select the MicroStation Element used to place the SLM stations.

An example of the SLM Stationing is shown below.



Notes:

- Although the application does not use a GEOPAK Chain as the SLM reference element, GEOPAK is required to be installed on the computer in order to use this application. GEOPAK does not need to be activated to use the application.
- The station tics are placed at every 100th of a mile (every 52.8').
- A station label is placed at every 5th tick mark (264' intervals).

ODOT_SLM_Stations

- The stations and tick marks are placed as a graphic group for easy deletion using the Graphic Group lock.
- The text is placed on the active level.
- The text size is determined by the active Model Annotation Scale as follows:

$$0.14 \times (\text{Model Annotation Scale}) = \text{Text Placement Size}$$

$$\text{Example: } 0.14 \times 20 = 2.8$$

Contacts

If you have any questions, suggestions, or problems please contact the ODOT Office of CADD and Mapping Services CADD Support team or use the following form on the ODOT web site at:

<http://www.dot.state.oh.us/Divisions/Engineering/CADDMapping/CADD/Pages/suggestions.aspx>