

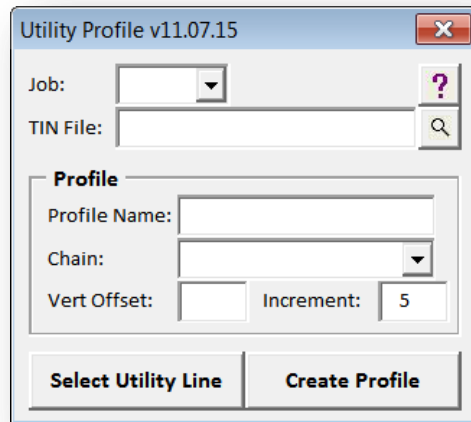
Application Name:	ODOT_UTILITYPROFILE.MVBA
Current version:	v11.07.15
Required MicroStation Version:	MicroStation V8i
Required GEOPAK Version:	GEOPAK V8i

The **ODOT_UTILITYPROFILE.MVBA** is a MicroStation/GEOPAK Visual Basic Application used to create a COGO Profile from a selected MicroStation graphic. The selected COGO Chain is used for the station reference. The depth of the utility is determined by a vertical offset from the selected GEOPAK TIN model.

The application can be accessed from the MicroStation pull down menu by selecting **ODOT > GEOPAK Apps > Utility Profile**, or by keying in the following command in MicroStation:

```
vba load ODOT_UTILITYPROFILE.MVBA;vba run utilityProfileMain
```

When the application is loaded, the dialog shown below is opened.



The application searches the current GEOPAK Working Directory for GPK files. If a GPK file is found, it is listed in the **Job Number** list and the **Chain** list is populated.

Select the **TIN File** to be used to extract the utility profile elevations.

Key-in the **Profile Name** for the utility profile. The profile name is limited to 15 characters for compatibility with GEOPAK COGO names.

Select the **Chain** that will be used as the stationing reference for the profile.

Key-in the **Vertical Offset** value to be used to extract the profile elevations from the selected **TIN File**.

ODOT_UTILITYProfile.mvba

The **Increment** field is used to specify the interval along the utility line in which elevations will be extracted from the **TIN File**. By default, elevations will be extracted every 5 feet along the selected utility line.

The **Select Utility Line** button is used to select the plan view MicroStation element that will be used to represent the utility line.

Select the **Create Profile** button to initiate the process.

Contacts

If you have any questions, suggestions, or problems please contact the ODOT Office of CADD and Mapping Services CADD Support team or use the following form on the ODOT web site at:

<http://www.dot.state.oh.us/Divisions/Engineering/CADDMapping/CADD/Pages/suggestions.aspx>