



OpenRoads Designer: WorkSet Exercises

Exercise 1

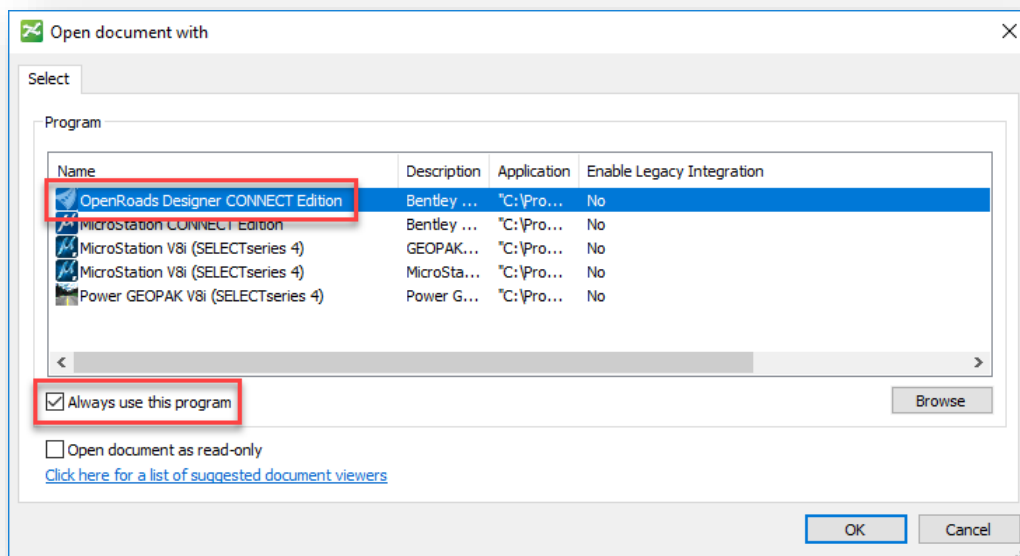
In this exercise we will access ProjectWise Explorer to open a design file, explore the ORD ribbon interface, and create a new design file for the WorkSet.

Part 1: Accessing the Training Workset and Creating Design Files

- ✓ Open **ProjectWise Explorer**



- ✓ Browse to the folder containing the training data. The folder location will be provided by the instructor for each class.
- ✓ From the training folder, browse to the **990-WorkSet Standards\Seed** folder
- ✓ Right-Click on the file **123456_DesignSeed2d.dgn** and choose the **Open With...** option to open the file with OpenRoads Designer CONNECT Edition. Toggle the **Always use the program** option **ON**



- ✓ Select **OK** to open the file.



Let's review the Geographic Coordinate System (GCS) assignment. The seed files for all ODOT projects should have a GCS defined.

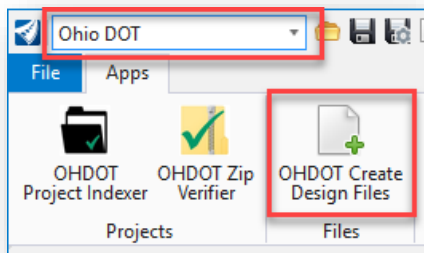
After opening the file, take the following steps:

- ✓ Select the **Drawing** Workflow from the upper left of the ORD interface
- ✓ Select the **Coordinate System** icon from the **Utilities** tab to review the assigned coordinate system value.
 - What is the name of the currently assigned Geographic Coordinate System?

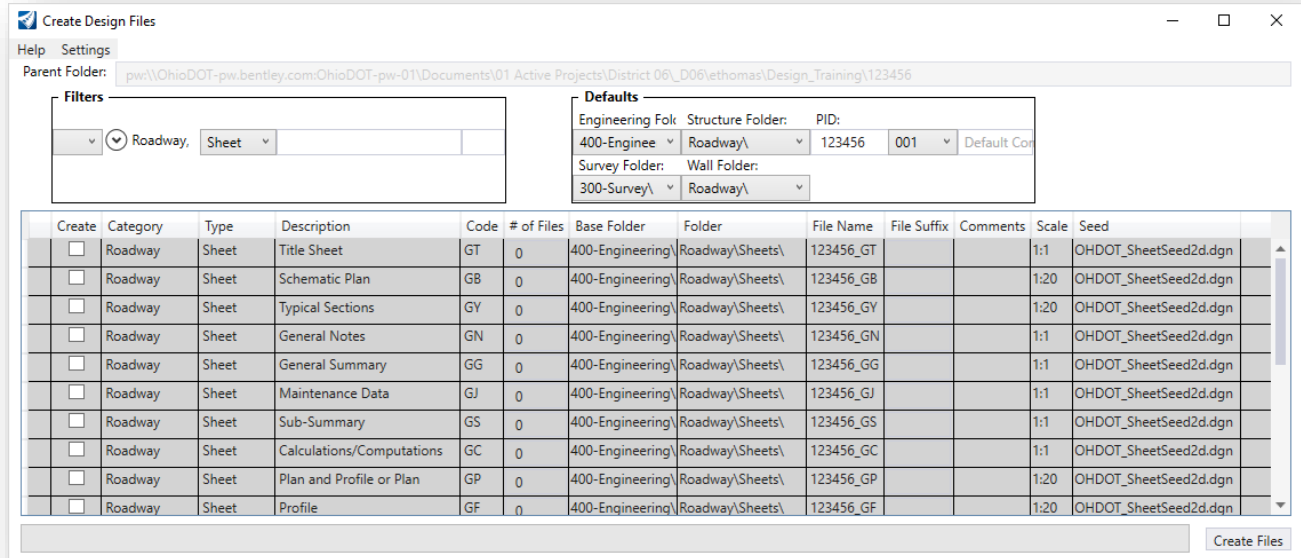
 - There is no need to change the coordinate system parameters. If the coordinate system has not been defined, contact the survey personnel.
 - It is good practice to make sure the GCS has also been defined for the Seed3d and the Drawing Seed files. Open those seed files to verify the GCS has been defined.
 - As each file is opened, be sure to check the files back into ProjectWise using the **Check In** option when prompted. Alternately, since no edits were made to the file, the **Free** option can be used to release the file without saving any changes.

Next we will create some design files for the WorkSet.

- ✓ Select the **Ohio DOT** Workflow from the top left of the ORD interface.
- ✓ From the **Apps** tab, select the **OHDOT Create Design Files** icon



The application is opened as shown below:



- ✓ Create the following DGN files:
 - Set the Filters to **Roadway** and **Sheet** as shown above.
 - Create the following files:
 - Title Sheet
 - Schematic Plan
 - Typical Sections

Which Seed File is used to create these design file? _____

Which folder are the files created in? _____

What should be entered for the **Comments** field for each file?

Title Sheet: _____

Schematic Plan: _____

Typical Sections: _____

What should be entered for the **Scale** field for each file?

Title Sheet: _____

Schematic Plan: _____

Typical Sections: _____

- ✓ After creating the design files, close the **Create Design File** application



Part 2: Exploring the ORD Interface

- ✓ **Without** using the **Search Ribbon** key-in (unless you absolutely cannot find the command), locate the following commands and write down the location where you found the command:

Place Smartline _____

Place Text _____

Edit Text _____

Annotation Scale _____

OpenRoads Line Between Points _____

OpenRoads Spiral-Arc-Spiral _____

OpenRoads Create Template _____

OpenRoads Create Corridor _____

- ✓ What is the **Geographic Coordinate System** that is assigned to the file? _____
How was the GCS assigned to the file? _____

- ✓ In which folder are the Seed files for the WorkSet located?

- ✓ In which folder is the OpenRoads Template Library for the WorkSet located?

- ✓ What is the name of the **User Preferences** file? _____

This completes this exercise.

- ✓ Exit the current file and check it back in to ProjectWise



OpenRoads Software Version

This document was prepared using the following software version:

OpenRoads Designer CONNECT Edition – 2021 Release 1 Update 10 – Version 10.10.01.03

Contacts

For any questions, suggestions, or problems with this document please contact the ODOT Office of CADD and Mapping Services by use of the following form on the ODOT website:

https://odot.formstack.com/forms/cadd_servicerequest
