



OpenRoads Design Corridor Modeling Basemap Exercise

Exercise A: Corridor Modeling Design Files

In this exercise we will create separate design files for the 3D model of each alignment in the project.

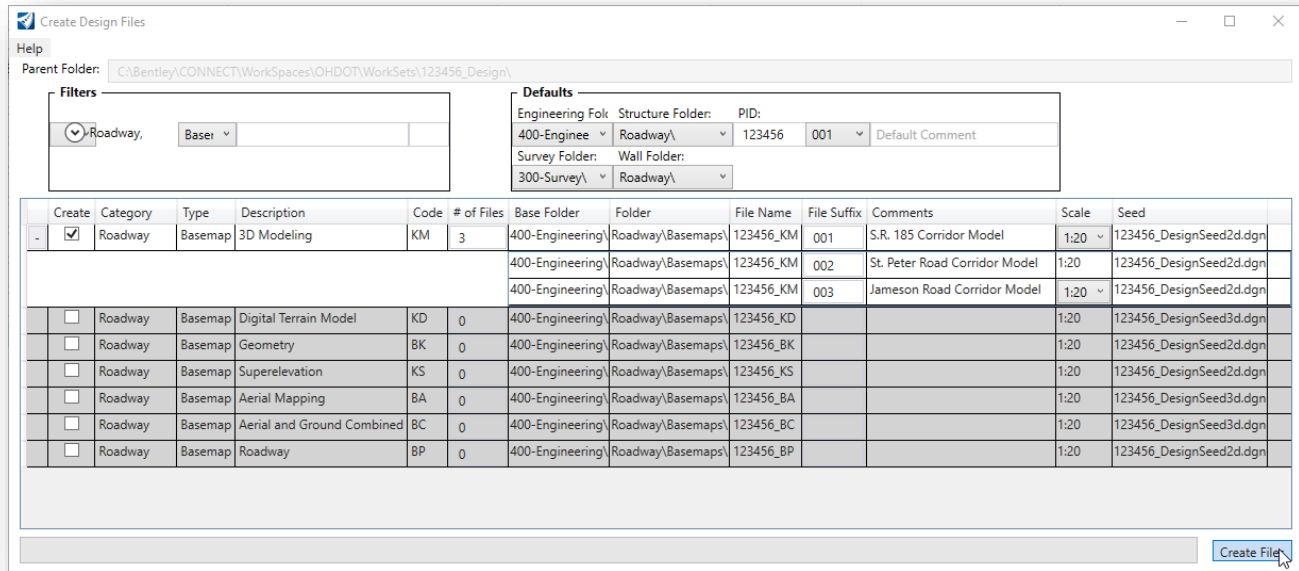
- ✓ Open **ProjectWise Explorer**



- ✓ Browse to the folder containing the training data. The folder location will be provided by the instructor for each class.
- ✓ Browse to the **400-Engineering\Roadway\Basemaps** folder.
- ✓ Open the **123456_BK001.dgn** file
- ✓ Select the **OHDOT Create Design Files** application (**OHDOT WorkFlow**) to create the corridor modeling basemaps for the project. Create the corridor basemap design files for the following alignments:

File Name	Comments
12345_KM001.dgn	S.R. 185 Corridor Model
12345_KM002.dgn	St. Peter Road Corridor Model
12345_KM003.dgn	Jameson Road Corridor Model

The settings in the **OHDOT Create Design Files** application are shown on the following page



- ✓ Choose the Create files button to initiate the process. Three files are created.

This completes this exercise.

- ✓ Exit OpenRoads Designer, checking the file back in to ProjectWise.



OpenRoads Software Version

This document was prepared using the following software version:

OpenRoads Designer CONNECT Edition – 2020 Release 3 Update 9 – Version 10.09.00.91

Contacts

For any questions, suggestions, or problems with this document please contact the ODOT Office of CADD and Mapping Services by use of the following form on the ODOT website:

https://odot.formstack.com/forms/cadd_servicerequest
