



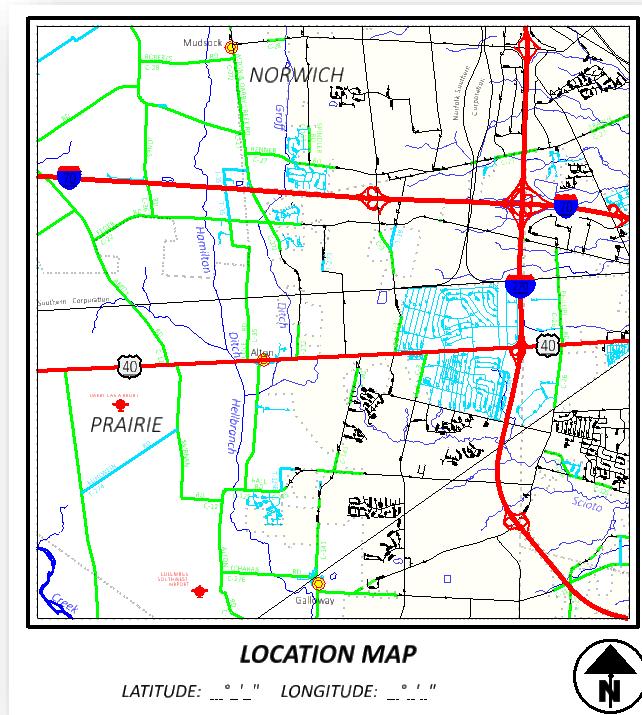
OHDOT_Title.mvba

Description:

The OHDOT_Title.mvba application is a MicroStation Connect Edition Visual Basic application used to place the map on ODOT Standard title sheets. The application allows the user to:

- Select the county(s) in which the project is located
- Interactively select the portion of the map(s) to be clipped-copied to the title sheet
- Place the map in the designated map area of an ODOT Standard title sheet interior cell

An example of the title sheet map is shown below.



Requirements

The ODOT Standard sheet interior cells **INTERIOR_TITLE** and **INTERIOR_TITLE 8.5X11** are used for the title sheet border.

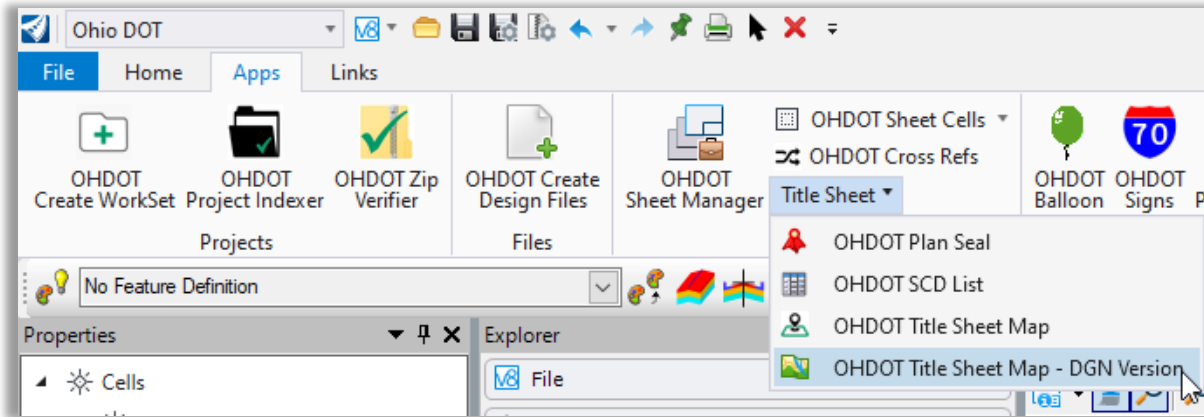
Title sheet borders are placed at a scale of 1 in a MicroStation Sheet Model. Neither the border cell or the MicroStation view is to be rotated.

The application uses ODOT's County Maps, located in the "cntymaps" folder of the OHDOT Standards. The configuration variable **OHDOT_CNTYMAPS** must be defined to specify the location of the county map files.

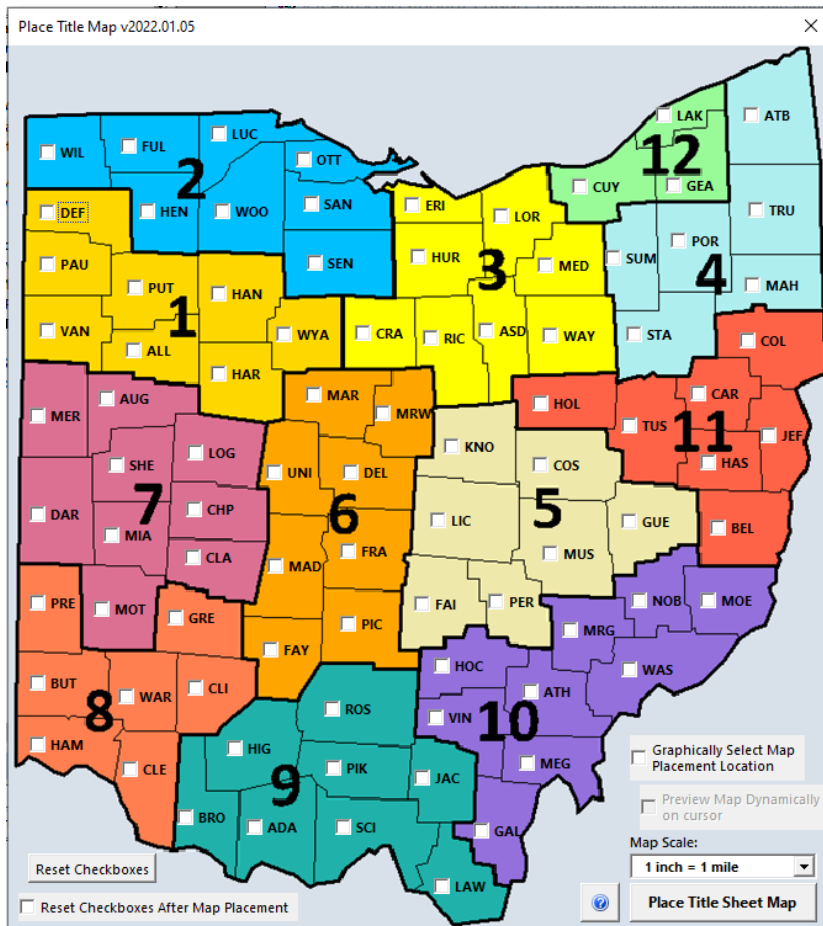


Application Operation:

The application is accessed from the Ohio DOT WorkFlow by selecting **Ohio DOT > Apps > Sheets > Title Sheet > OHDOT Title Sheet Map** as shown below.



The dialog show below is opened.



Select the county(s) from the Ohio map.

Choose the desired **Map Scale**. The following options are provided:

- 1 inch = 1 mile
- 1 inch = 2 miles

Select the **Place Title Sheet Map** button to initiate the process. The main form is hidden from the view.

The selected county map file(s) are attached as a reference.

A fence area will float on the cursor. The size of the fence area corresponds to the size of the map area on the ODOT Standard title sheet maps for the selected **Map Scale**.

Enter a left-click to place the fence in the desired location.



After the fence is place, the following events occur:

- The application clip-copies the elements form the referenced maps into memory.
- Once copied, this application will automatically remove the reference attachments
- The application will fit the view on the sheet border element
- If the Graphically Select map Placement Location Checkbox is checked on then the user must manually define the placement location by snapping to the lower left corner of the placement location.
 - If the Graphically Select Map Placement Location Checkbox is not checked on then the clip-copied map is automatically placed at the correct location on the sheet, if a MicroStation Point Element placed using color 214 is found in the sheet Interior cell as described below.

With the release of version 2021.10.11 of the Title sheet Map application, an active point has been added to the **INTERIOR_TITLE** and **INTERIOR_TITLE 8.5X11** cells at the lower left corner of the map location boundary. This point is defined using Color 214. If the Graphically Select Map Placement Location checkbox is not checked on, the application will search the interior title cell for this point. If the point is found in the cell, the map is placed at this location.

If the interior cell has been dropped, the application will search elements in the active design file for a point element of color 214. If the element is found, the map is placed at the point location.

If no point is found, the user must manually define the placement location by snapping to the lower left corner of the placement location.

Note that the application will only “float” the map elements on the cursor if the Preview Map Dynamically on cursor checkbox is checked. This is unchecked by default as it speeds up the placement process.

- Once the Map has been placed if the Reset Checkboxes after map placement button is checked on then all the checkboxes will be unchecked. Note that the Reset Checkboxes button will do the same thing.

Versions:

Version 2021.01.05:

- Updated app to fix undo, it was previously undoing the placement but also reattaching the county dgn references.
- Fixed app leaving county dgn references if user starts another tool in the middle of placement.
- Updated app to fit the view to just the county dgn file references when selecting map content, previously it fit the view to all content.
- Added Graphically select map placement location checkbox for cases where multiple maps will be placed on same sheet.
- Added Preview Map dynamically on cursor checkbox to show the map content dynamically on the cursor during placement.
- Added Reset Checkboxes after map placement checkbox which will uncheck all the checkboxes in the app after placement if checked on.
- Added a reset checkboxes button.

Version 2021.01.20:



- Updated app to fix railroad custom line style scaling after its placed
- Updated app to use a StateMap.dgn file instead of a individual county dgn files.

Contacts

For any questions, suggestions, or problems with this document please contact the ODOT Office of CADD and Mapping Services by use of the following form on the ODOT website:

https://odot.formstack.com/forms/cadd_servicerequest
