



OHDOTCEv02 WorkSpace Setup Tool

Description:

This OHDOTCEv02 WorkSpace Setup Tool is a standalone resizable c# Windows Presentation Form application that is used to set up and configure OhioDOT's Connect Workspace (OHDOTCEv02) inside and outside of ProjectWise.

Please note that setting up the OHDOTCEv02 workspace set up involves two steps. 1st running this tool to set up the workspace and 2nd running the sync tool that actually downloads the workspace files.

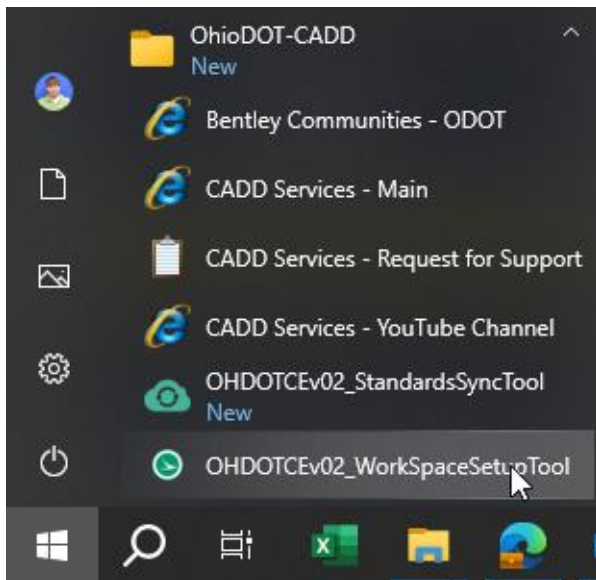
This document is intended to be a reference document to explain all the options and functionality that exist in this application. It is not a workflow or how to guide. Please see our walkthrough video [here](#).

Software Requirements:

This application was developed using .NET Framework 4.6.2 in 64 bit windows 10.

Loading the Application:

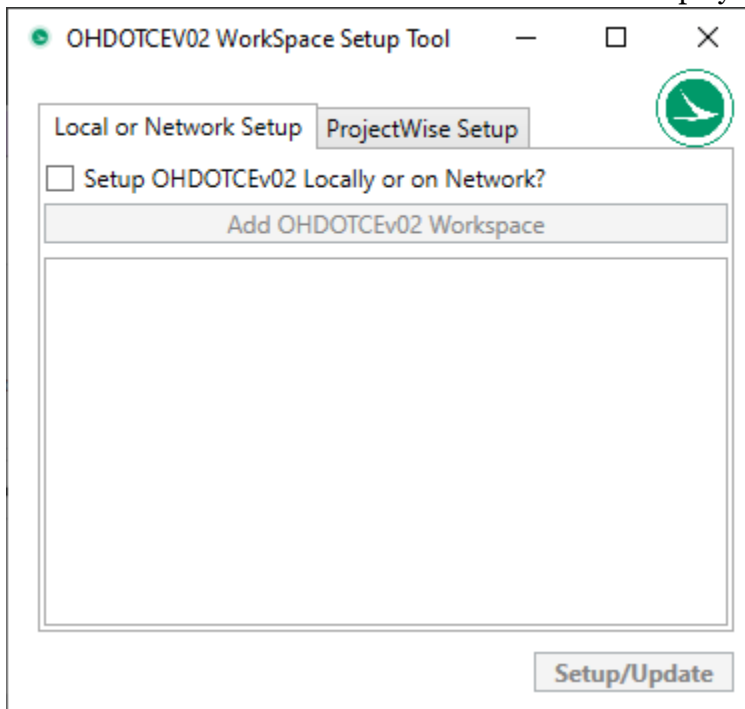
After installing the OHDOTCEv02 WorkSpace Tools, the OHDOTCEv02 WorkSpace Setup Tool can be launched from the start menu.



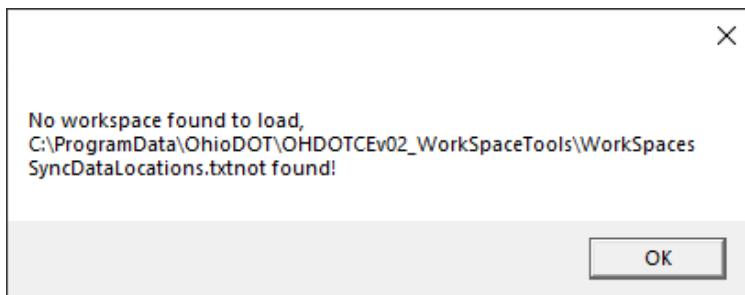


Application Operation:

When launched the window shown below will be displayed.



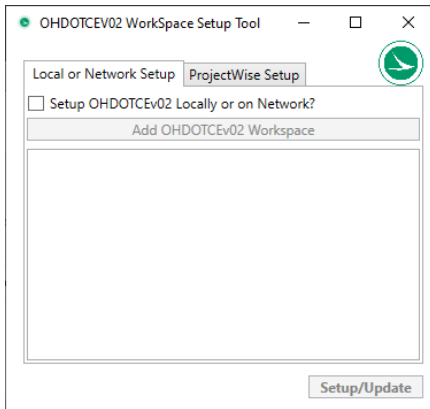
If no workspaces have been set up previously or the application fails to find the text file that stores all the workspaces to load then the below message box will appear.



If a workspace is set up for ProjectWise Explorer then a login prompt will appear for each datasource that needs to be logged into.

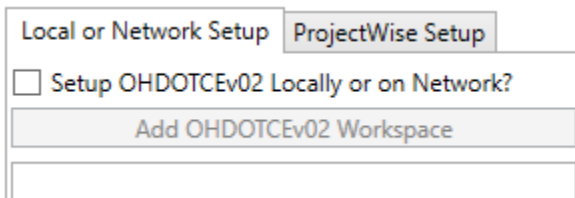


WorkSpace Setup Page:



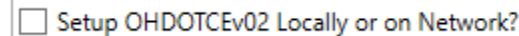
This page is used to specify all the locations to set up/modify the OHDOTCEv02 workspace. It has two tabs, the Local or Network Setup Tab and ProjectWise Setup Tab.

Local or Network Setup Tab



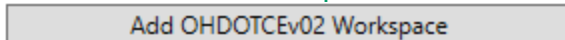
This tab allows you to specify all the locations you would like to set up the OHDOTCEv02 workspaces on a network location or local C drive. To enable this tab the [Setup OHDOTCEv02 Locally or on Network? Checkbox](#) must be checked on.

Setup OHDOTCEv02 Locally or on Network? Checkbox



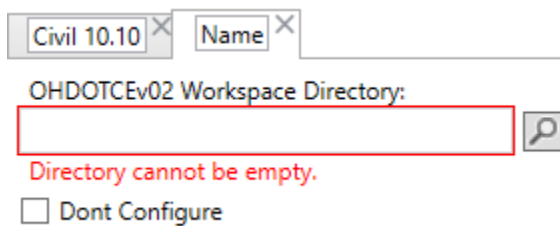
When this checkbox is checked on the rest of this tab is enabled. Checking it on means you want the installer to setup/modify workspaces locally or on a network.

Add OHDOTCEv02 Workspace Button



When selected this will add an additional [workspace tab](#) to this section. There is no limit on the number of workspace locations.

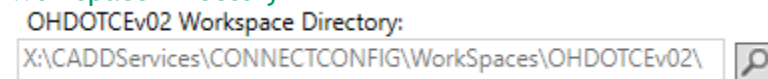
WorkSpace Tab



When the [Add OHDOTCEv02 Workspace Button](#) is selected an additional WorkSpace tab will be created. By default the Tab will be named Name. You should change this to a meaningful description of this specific instance of our OHDOTCEv02 workspace. Examples could be the civil version you plan an making the workspace compatible with if supporting side by

side installations of OpenRoads Designer. Or if its for a local set up the description could just be local. Additionally if its for a network location the description could be the network drive letter. Ultimately the description can be whatever you want, it will be displayed the sync tool as well.

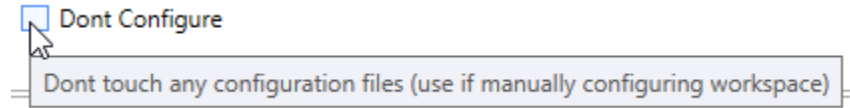
Workspace Directory





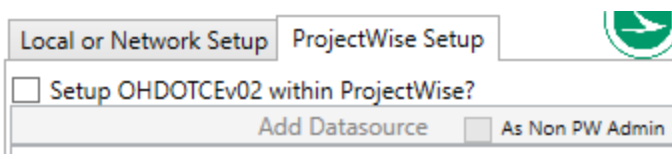
Use the search button (which will open a folder select dialog) to select the location you want to set up the ODOTCEv02 workspace. This location should be named OHDOTCEv02 but it does allow for alternative names.

Don't Configure CheckBox



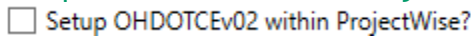
Check this checkbox if you want to set up the workspace configuration manually. If this is checked on the installer will not add/modify the WorkSpace Configuration file for this workspace.

ProjectWise Setup Tab



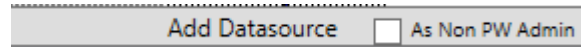
This tab allows you to specify all the locations you would like to set up the OHDOTCEv02 workspaces within ProjectWise DataSources. To enable this tab the Setup OHDOTCEv02 within ProjectWise? Checkbox must be checked on.

Setup OHDOTCEv02 within ProjectWise? Checkbox

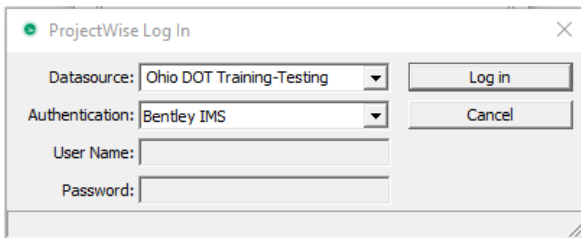


When this checkbox is checked on the rest of this tab is enabled. Checking it on means you want the installer to setup/modify workspaces within ProjectWise DataSources.

Add Datasource Button

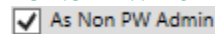


When this button is selected a ProjectWise Datasource login dialog will open, once logged into a datasource successfully, the datasource will be added to the [DataSource Listing Area](#) where you can then set up WorkSpaces within each datasource listed.



If you want to set up workspaces in multiple datasources simply select the Add Datasource button again.

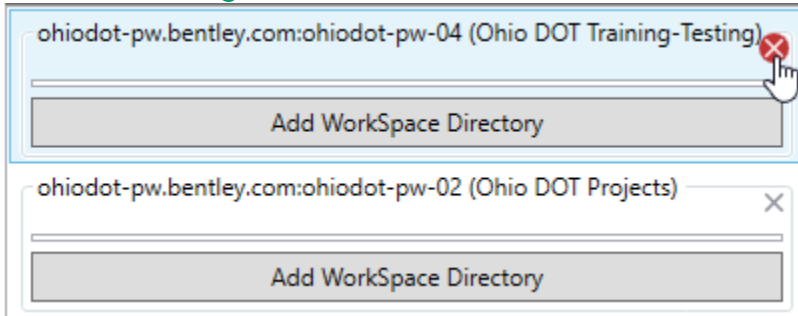
As Non PW Admin Checkbox



if this checkbox is checked on when selected the Add Datasource button then a non-Admin PW login dialog will appear. Once logged in any workspaces added to this dialog will have the [Don't Configure checkbox](#) checked on and not enabled. As in order to set up the configuration for a workspace PW admin rights are required. But if the workspace is already set up and the end user is wanted to run the Sync tool this is the option they would use.



DataSource Listing Area



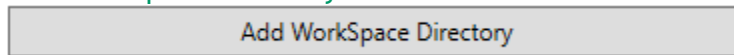
This area will list all the Datasources that you have logged in via the use of the [Add Datasource Button](#).

To set up a workspace within a datasource use the [Add Workspace Directory Button](#). By default when a new datasource is added it will also

add one Workspace Directory (Equivalent to selecting the [Add Workspace Directory Button](#)).

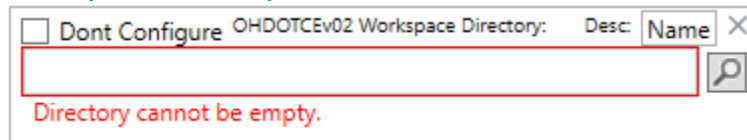
A Datasource can be removed by selecting the x in the upper right corner of the individual datasource listing.

Add Workspace Directory Button



When this button is selected a [Workspace directory](#) will be added within the datasource listing this button was selected from. If multiple workspace locations are needed within a given datasource simply select this button to add an additional [WorkSpace Directory](#).

Workspace Directory

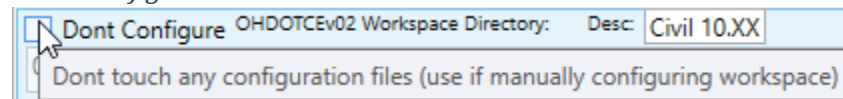


When the [Add Workspace Directory Button](#) is selected an additional

Workspace Directory will be created. This section consists of a [Don't Configure Checkbox](#), [Desc TextBox](#), a textbox to display the workspace directory and a [search button](#) to select the workspace directory.

By default the Tab will be named Name. You should change this to a meaningful description of this specific instance of our OHDOTCEv02 workspace. Examples could be the civil version you plan an making the workspace compatible with if supporting side by side installations of OpenRoads Designer. Or if its for a local set up the description could just be local. Additionally if its for a network location the description could be the network drive letter. Ultimatly the description can be whatever you want, it will be displayed the sync tool as well.

Don't Configure Checkbox



Check this checkbox if you want to set up the workspace configuration manually. If this is checked on the installer will not add/modify the Workspace Configuration file for this workspace. It will also not add/modify a workspace CSB file as well as it wont set up the workset template as a workarea or associate the CSB file to it.



Desc TextBox

Desc:

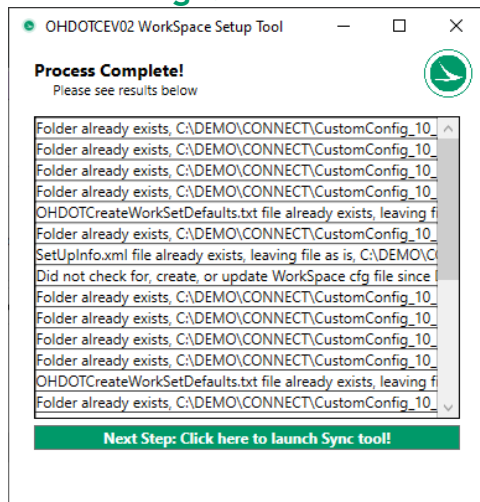
By default the description will be named Name. You should change this to a meaningful description of this specific instance of our OHDOTCEvo2 workspace. Examples could be the civil version you plan an making the workspace compatible with if supporting side by side installations of OpenRoads Designer. Ultimatly the description can be whatever you want, it will be displayed the sync tool as well.

Search Button



When this button is selected a projectwise folder select dialog will open. Select the location you want to set up the ODOTCEvo2 workspace. This location should be named OHDOTCEvo2 but it does allow for alternative names.

Results Page:



This page is displayed after the [Setup/Update Button](#) is selected. It will list the results of the process. if anything failed that line will be red.

Next Step: Click here to launch Sync tool! Button

Next Step: Click here to launch Sync tool!

This button will launch the Sync tool which is the next step in setting up the OHDOTCEvo2 workspace.

Setup/Update Button

Setup/Update

When this button is selected the following happens

- For each listed Workspace in the Local or NetworkSetup Tab perform the following .
 - Creates specified workspace directory if it doesn't already exist.
 - Creates WorkSetCFGs folder inside specified workspace directory if it doesn't already exist.
 - Creates Local folder inside specified workspace directory if it doesn't already exist.
 - Creates ApplicationSettings folder inside Local folder if it doesn't already exist
 - Creates an OHDOTCreateWorkSetDefaults.txt file inside ApplicationSettings folder only if it doesn't already exist (left alone if it already exists!).
 - File should be checked/update since the WorkSet CFG location is assumed to be a WorkSetCFGs folder directly inside the specified workspace directory.



- If the Don't configure checkbox is checked on then the Workset CFG location set within this file is left blank!
- Creates a SyncData folder within the specified workspace directory if it doesn't already exist.
- Creates SetUpInfo.xml file inside the SyncData folder if it doesn't exist already. (this hold the specified workspace description)
 - If file already exists then it is updated to match what was specified.
- As long as Don't Configure checkbox is NOT checked then a workspace cfg file is downloaded from OhioDOT's FTP site and placed at the same directory as the specified workspace directory and named to match the specified workspace name if the file doesn't already exist.
- For each listed Workspace in the ProjectWise Set Tab perform the following
 - Creates specified workspace directory if it doesn't already exist.
 - Creates Local folder inside specified workspace directory if it doesn't already exist.
 - Creates ApplicationSettings folder inside Local folder if it doesn't already exist
 - Creates an OHDOTCreateWorkSetDefaults.txt file inside ApplicationSettings folder only if it doesn't already exist (left alone if it already exists!).
 - Creates a SyncData folder within the specified workspace directory if it doesn't already exist.
 - Creates SetUpInfo.xml file inside the SyncData folder if it doesn't exist already. (this holds the specified workspace name and description).
 - If file already exists then it is updated to match what was specified.
 - If Don't Configure is checked on then the rest of the ProjectWise Workspace set up is skipped (the next 3 bullets).
 - A workspace cfg file is downloaded from OhioDOT's FTP site and placed at the same directory as the specified workspace directory and named to match the specified workspace name if the file doesn't already exist.
 - A Configuration settings block (CSB) is created named the workspace name – workspace description. If CSB already exists, then it is updated. If Name or Desc changed from a previous set up then CSB is renamed and updated to match.
 - Creates Standards\WorkSetTemplates folder inside the workspace folder
 - Reads OhioDOT's FTP site to find all Workset Templates. For each found workset template a folder is created within the WorkSetTemplates folder.
 - This workset folder is updated to a WorkArea
 - This workset folder then gets the workspace CSB assigned to it.
- All Workspace SyncData directories are saved to
C:\ProgramData\OhioDOT\OHDOTCEv02_WorkSpaceTools\WorkSpacesSyncDataLocations.txt.
- Log file is saved/updated at
C:\ProgramData\OhioDOT\OHDOTCEv02_WorkSpaceTools\WorkspaceSetupLog.txt

Updates

Version 1.0.0.0: Initial Release

- Separated this functionality from the OHDOTCEv02_WorkSpaceTools_Installer.exe (formally OHDOTCEv02_AdminTools_Installer.exe)
- Allowed non PW admin login functionality (forces don't configure option)



Contacts

For any questions, suggestions, or problems with this document please contact the ODOT Office of CADD and Mapping Services by use of the following form on the ODOT website:

https://odot.formstack.com/forms/cadd_servicerequest
