



# OpenRoads Designer: WorkSet Exercises

## Exercise 1

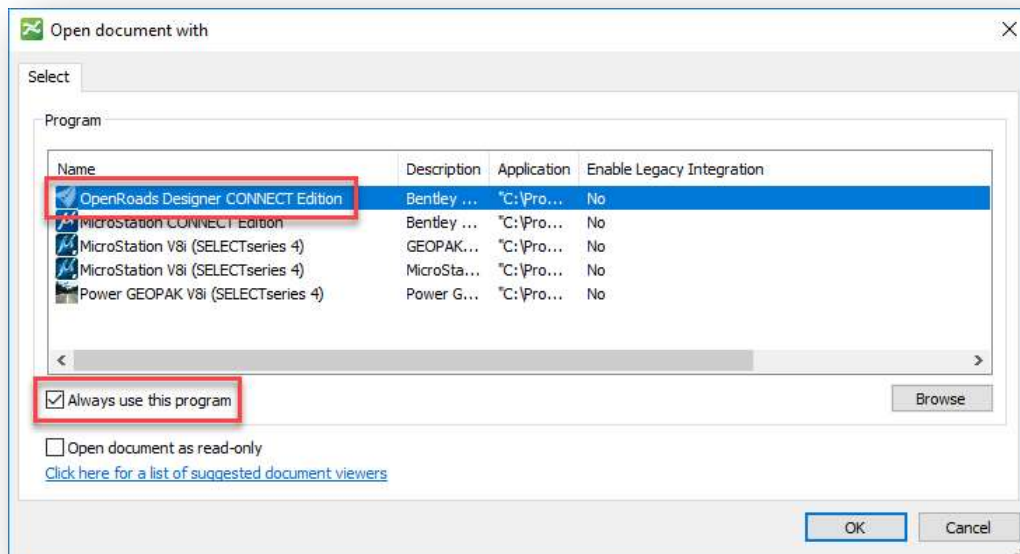
In this exercise we will access ProjectWise Explorer to open a design file, explore the ORD ribbon interface, and create a new design file for the WorkSet.

### Part 1: Accessing the Training Workset and Creating Design Files

- ✓ Open **ProjectWise Explorer**



- ✓ Browse to the folder containing the training data. The folder location will be provided by the instructor for each class.
- ✓ From the training folder, browse to the **990-WorkSet Standards\Seed\** folder
- ✓ Right-Click on the file **123456\_DesignSeed2d.dgn** and choose the **Open With...** option to open the file with OpenRoads Designer CONNECT Edition. Toggle the **Always use the program** option **ON**



- ✓ Select **OK** to open the file.



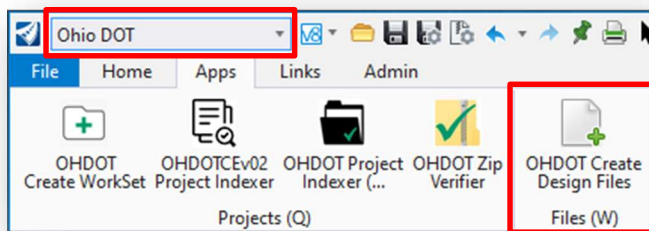
Let's review the Geographic Coordinate System (GCS) assignment. The seed files for all ODOT projects should have a GCS defined.

After opening the file, take the following steps:

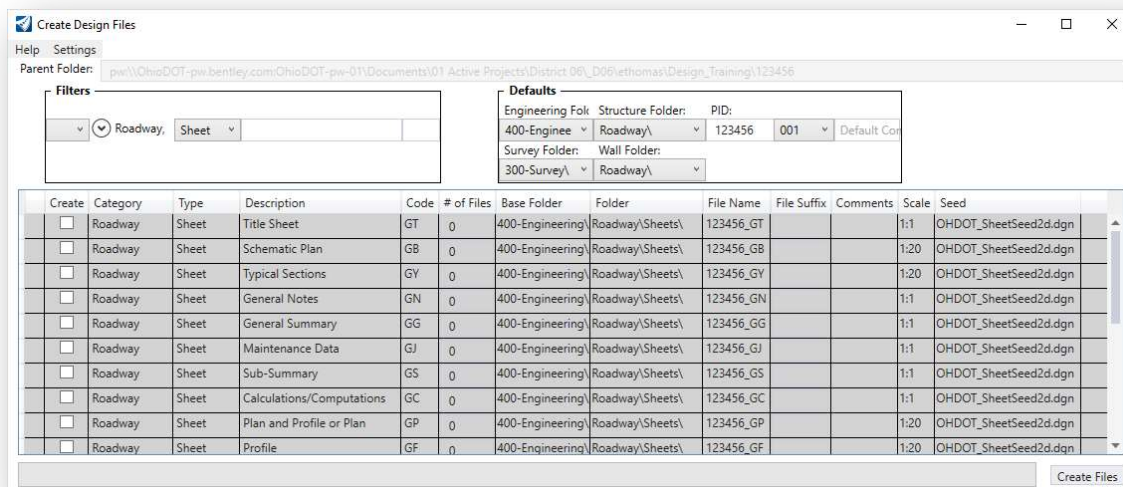
- ✓ Select the **Drawing** Workflow from the upper left of the ORD interface
- ✓ Select the **Coordinate System** icon from the **Utilities** tab to review the assigned coordinate system value.
  - What is the name of the currently assigned Geographic Coordinate System?
- There is no need to change the coordinate system parameters. If the coordinate system has not been defined, contact the survey personnel.
- It is good practice to make sure the GCS has also been defined for the Seed3d and the Drawing Seed files. Open those seed files to verify the GCS has been defined.
- As each file is opened, be sure to check the files back into ProjectWise using the **Check In** option when prompted. Alternately, since no edits were made to the file, the **Free** option can be used to release the file without saving any changes.

Next, we will create some design files for the WorkSet.

- ✓ Select the **Ohio DOT** Workflow from the top left of the ORD interface.
- ✓ From the **Apps** tab, select the **OHDOT Create Design Files** icon



The application is opened as shown below:





- ✓ Create the following DGN files:
  - Set the Filters to **Roadway** and **Sheet** as shown above.
  - Create the following files:
    - Title Sheet
    - Schematic Plan
    - Typical Sections

Which Seed File is used to create these design file? \_\_\_\_\_

Which folder are the files created in? \_\_\_\_\_

What should be entered for the **Comments** field for each file?

Title Sheet: \_\_\_\_\_

Schematic Plan: \_\_\_\_\_

Typical Sections: \_\_\_\_\_

What should be entered for the **Scale** field for each file?

Title Sheet: \_\_\_\_\_

Schematic Plan: \_\_\_\_\_

Typical Sections: \_\_\_\_\_

- ✓ After creating the design files, close the **Create Design File** application

## Part 2: Exploring the ORD Interface

- ✓ **Without** using the **Search Ribbon** key-in (unless you absolutely cannot find the command), locate the following commands and write down the location where you found the command:

Place Smartline \_\_\_\_\_

Place Text \_\_\_\_\_

Edit Text \_\_\_\_\_

Annotation Scale \_\_\_\_\_

OpenRoads Line Between Points \_\_\_\_\_

OpenRoads Spiral-Arc-Spiral \_\_\_\_\_

OpenRoads Create Template \_\_\_\_\_

OpenRoads Create Corridor \_\_\_\_\_

- ✓ What is the **Geographic Coordinate System** that is assigned to the file? \_\_\_\_\_  
How was the GCS assigned to the file? \_\_\_\_\_

- ✓ In which folder are the Seed files for the WorkSet located?  
\_\_\_\_\_

- ✓ In which folder is the OpenRoads Template Library for the WorkSet located?  
\_\_\_\_\_

- ✓ What is the name of the **User Preferences** file? \_\_\_\_\_



This completes this exercise.

- ✓ Exit the current file and check it back in to ProjectWise

## OpenRoads Software Version

---

This document was prepared using the following software version:

OpenRoads Designer CONNECT Edition – 2021 Release 1 Update 10 – Version 10.10.01.03

This document was updated using the following software version:

OpenRoads Designer CONNECT Edition – 2022 Release 3 Update 12 – Version 10.12.02.04

## Contacts

---

For any questions, suggestions, or problems with this document please contact the ODOT Office of CADD and Mapping Services by use of the following form on the ODOT website:

[https://odot.formstack.com/forms/cadd\\_servicerequest](https://odot.formstack.com/forms/cadd_servicerequest)

---