



# OpenRoads Design Corridor Modeling Basemap Exercise

## Exercise A: Corridor Modeling Design Files

---

In this exercise we will create separate design files for the 3D model of each alignment in the project.

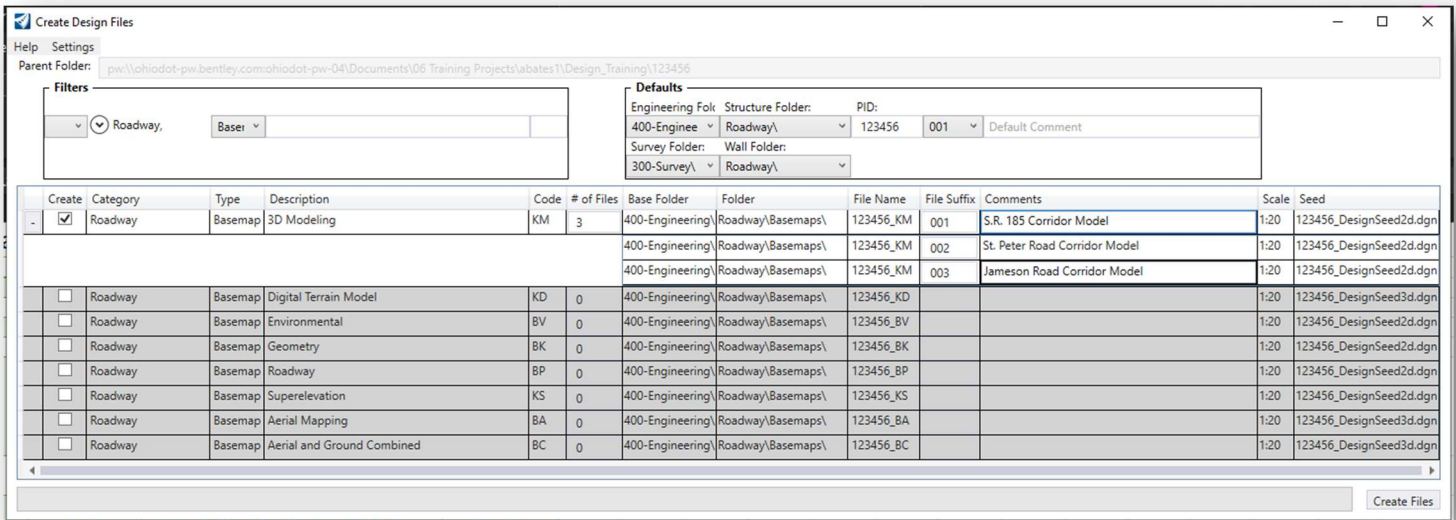
- ✓ Open **ProjectWise Explorer**



- ✓ Browse to the folder containing the training data. The folder location will be provided by the instructor for each class.
- ✓ Browse to the **400-Engineering\Roadway\Basemaps\** folder.
- ✓ Open the **123456\_BK001.dgn** file
- ✓ Select the **OHDOT Create Design Files** application (**OHDOT WorkFlow**) to create the corridor modeling basemaps for the project. Create the corridor basemap design files for the following alignments:

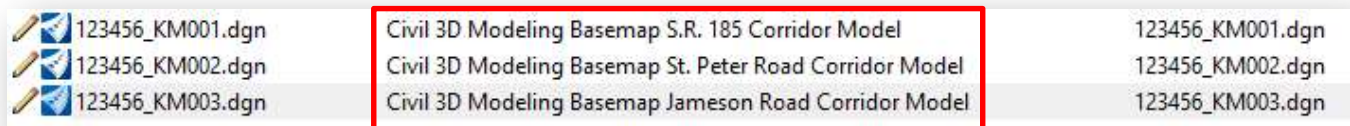
File Name	Comments
12345_KM001.dgn	S.R. 185 Corridor Model
12345_KM002.dgn	St. Peter Road Corridor Model
12345_KM003.dgn	Jameson Road Corridor Model

The settings in the **OHDOT Create Design Files** application are shown on the following page



- ✓ Once you've selected the corridor modeling basemap (KM) type fill out the **Comments** column
  - S.R. 185 Corridor Model
  - St. Peter Road Corridor Model
  - Jameson Road Corridor Model
- ✓ Choose the **Create Files** button to initiate the process. Three files are created.

**Note:** As you can see when you fill out the Comments column it fills in the file description in PW.



This completes this exercise.

- ✓ Exit OpenRoads Designer, checking the file back in to ProjectWise.



## OpenRoads Software Version

---

This document was prepared using the following software version:

OpenRoads Designer CONNECT Edition – 2020 Release 3 Update 9 – Version 10.09.00.91

This document was updated using the following software version:

OpenRoads Designer CONNECT Edition – 2022 Release 3 Update 12 – Version 10.12.02.04

## Contacts

---

For any questions, suggestions, or problems with this document please contact the ODOT Office of CADD and Mapping Services by use of the following form on the ODOT website:

[https://odot.formstack.com/forms/cadd\\_servicerequest](https://odot.formstack.com/forms/cadd_servicerequest)

---