

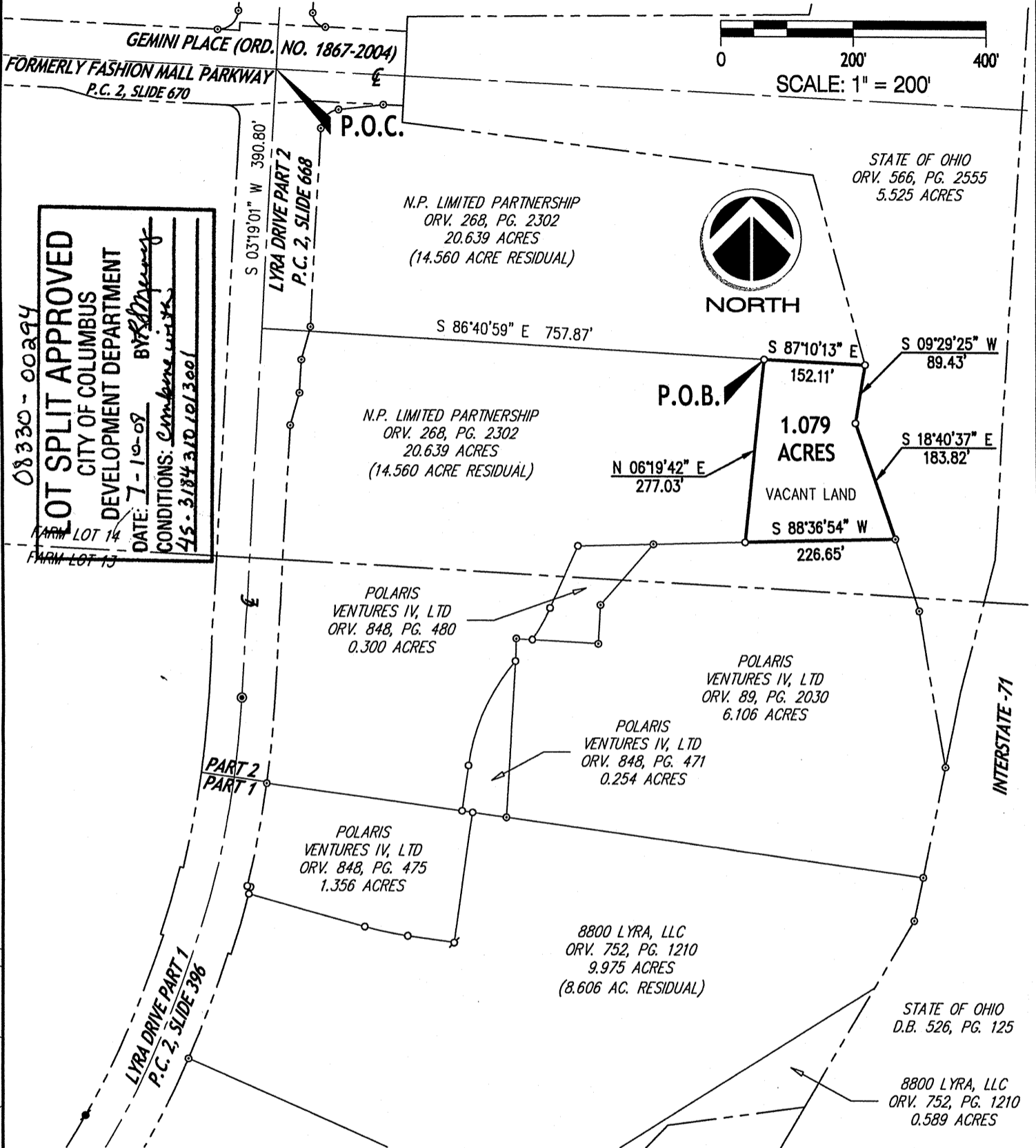


Central Ohio
740.363.6792
740.363.6536 fax
800.325.7647

Solutions for Your World
www.FloydBrowne.com

PLAT OF SURVEY FOR
1.079 ACRES

SITUATED IN THE STATE OF OHIO, COUNTY OF DELAWARE, CITY OF COLUMBUS,
BEING PART OF FARM LOT 14, SECTION 4, TOWNSHIP 3, RANGE 18,
UNITED STATES MILITARY LANDS.



08330-00294
LOT SPLIT APPROVED
 CITY OF COLUMBUS
 DEVELOPMENT DEPARTMENT
 DATE: 7-10-09
 BY: [Signature]
 CONDITIONS: [Text]
 45-3184-310-10/13eol

NOTE

ALL IRON PINS SET ARE 5/8" SOLID IRON PINS 30" IN LENGTH WITH AN ORANGE PLASTIC CAP STAMPED "FLOYD BROWNE GROUP".

NOTE

ALL RECORD INFORMATION SHOWN HEREON WAS OBTAINED FROM THE RECORDER'S OFFICE, DELAWARE COUNTY, OHIO.

BASIS OF BEARINGS

BEARINGS ARE BASED ON DATA ACQUIRED BY GPS OBSERVATIONS AS PER NAD 83 (1995)-OHIO STATE PLANE COORDINATE SYSTEM-NORTH ZONE FROM THE DELAWARE COUNTY GEODETIC CONTROL MONUMENTATION.

LEGEND

- IRON PIN FND ●
- IRON PIPE FND ○
- MAG NAIL FND ●
- IRON PIN SET ○
- MAG NAIL SET ○
- 1" PLAT MON FND ●



ACREAGE BREAKDOWN
 1.079 ACRES OUT OF FARM LOT 14.
 1.079 ACRES OUT OF 20.639 ACRE TRACT.

I HEREBY STATE THAT THIS SURVEY IS BASED ON ACTUAL FIELD MEASUREMENTS AND TO THE BEST OF MY KNOWLEDGE AND BELIEF IS CORRECT.

[Signature]
 MAYNARD H. THOMPSON, P.S.
 PROFESSIONAL SURVEYOR NO. 7128
 DATE: 06/04/08

PAGE 2 OF 2
 DRAWN BY: DBP
 CHECKED BY: MHT

FILE NO. 08-00215-010

J:\PROJECTS\NP LIMITED\08-00215\SRVY\DWGS-DOCS\PLAT 08-00215 (1_079 AC).DWG - 6/6/2008 3:32:12 PM