



OHDOT_Sheets.mvba

Description:

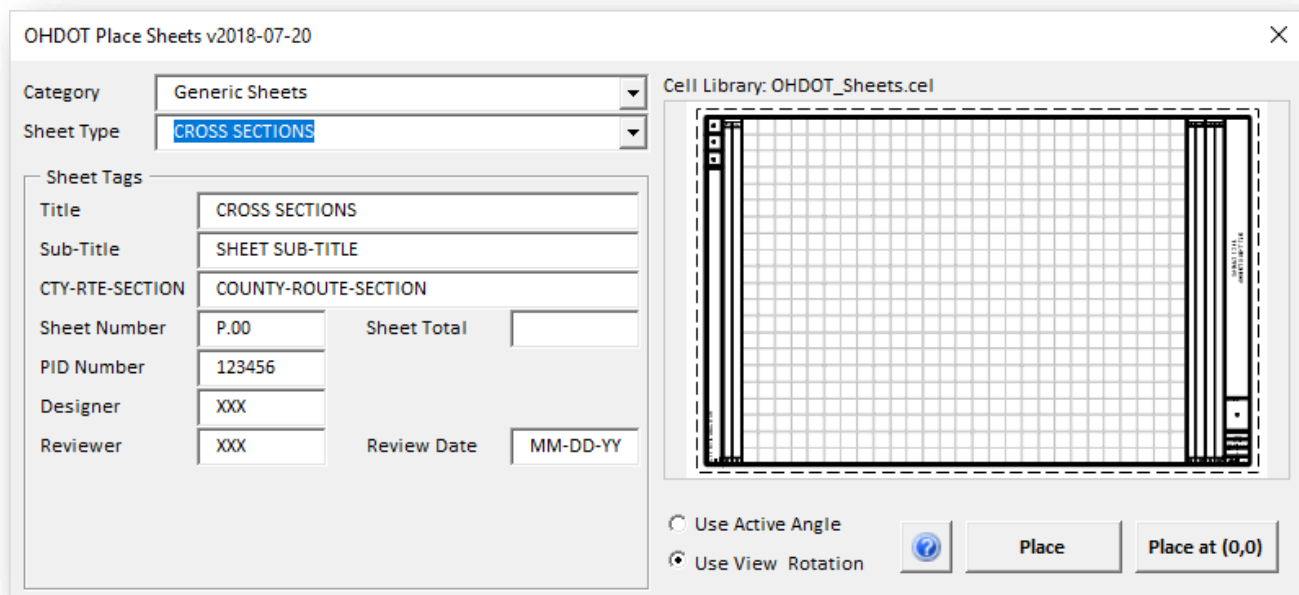
The OHDOT_Sheets.mvba application is used to place ODOT Standard sheet border cells in the active sheet model.

Loading the Application:

The application is loaded in MicroStation Connect Edition or OpenRoads Designer Connect Edition by selecting the **Sheet Cells** icon from the Ohio DOT Workflow.

Application Operation:

When the application is initiated, a dialog like the example below is opened.



Category

ODOT's sheet cells are comprised of sheet border cells and sheet interior cells. A variety of borders can be paired with an interior depending on the application. Predefined combinations of borders and interiors are available by choosing a Category. The following categories are available, defining a variety of typical sheet borders:

- Generic sheets
- Bridge sheets
- Geotechnical sheet
- Right-of-Way sheets



Sheet Type

A variety of sheet types are preconfigured for each Category.

Sheet Tags

When a sheet type is selected, the available tags for the sheet are displayed in the Sheet Tags area. These tags are written to the sheet border when the sheet cell is placed in the design file.

Place, Place at (0,0)

Sheet borders can be placed interactively, at a user specified location, but choosing the **Place** option. Alternately, sheet borders can be placed at the 0,0 coordinate by choosing the Place at (0,0) option. In either case, the rotation angle of the cell is set using the **Use Active Angle** or the **Use View Rotation** options.

Updates:

Version 2018.07.20

Initial release for MicroStation and OpenRoads Designer Connect Edition

Contacts

For any questions, suggestions, or problems with this document please contact the ODOT Office of CADD and Mapping Services by use of the following form on the ODOT website:

https://odot.formstack.com/forms/cadd_servicerequest
