

STATE OF OHIO  
DEPARTMENT OF TRANSPORTATION

**CRA - C.R. 31**  
**(SCOTT RD.) PART 2**

**CRANBERRY TOWNSHIP**  
**CRAWFORD COUNTY**

**FOR PART 1, SEE CRA-C.R.6-1.61 (BOUNDARY ROAD)**

**PROJECT DESCRIPTION**

IMPROVEMENT OF 0.38 MILE OF C.R. 31 (SCOTT RD.) BY RECONSTRUCTION OF EXISTING VERTICAL ALIGNMENT TO ELIMINATE HAZARDOUS VERTICAL CURVES INCLUDING UPGRADING OF GUARDRAIL, DRAINAGE SIGNING AND PAVEMENT MARKINGS.

**EARTH DISTURBED AREAS**

PROJECT EARTH DISTURBED AREA: 3.5 ACRES  
ESTIMATED CONTRACTOR EARTH DISTURBED AREA: 0.9 ACRES  
NOTICE OF INTENT EARTH DISTURBED AREA: 4.4 ACRES

**2019 SPECIFICATIONS**

THE STANDARD SPECIFICATIONS OF THE STATE OF OHIO, DEPARTMENT OF TRANSPORTATION, INCLUDING SUPPLEMENTAL SPECIFICATIONS LISTED IN THE PLANS AND CHANGES LISTED IN THE PROPOSAL SHALL GOVERN THIS IMPROVEMENT.

I HEREBY APPROVE THESE PLANS AND DECLARE THAT THE MAKING OF THIS IMPROVEMENT WILL REQUIRE THE CLOSING TO TRAFFIC OF THE HIGHWAY AND THAT DETOURS WILL BE PROVIDED AS INDICATED ON SHEET 6.

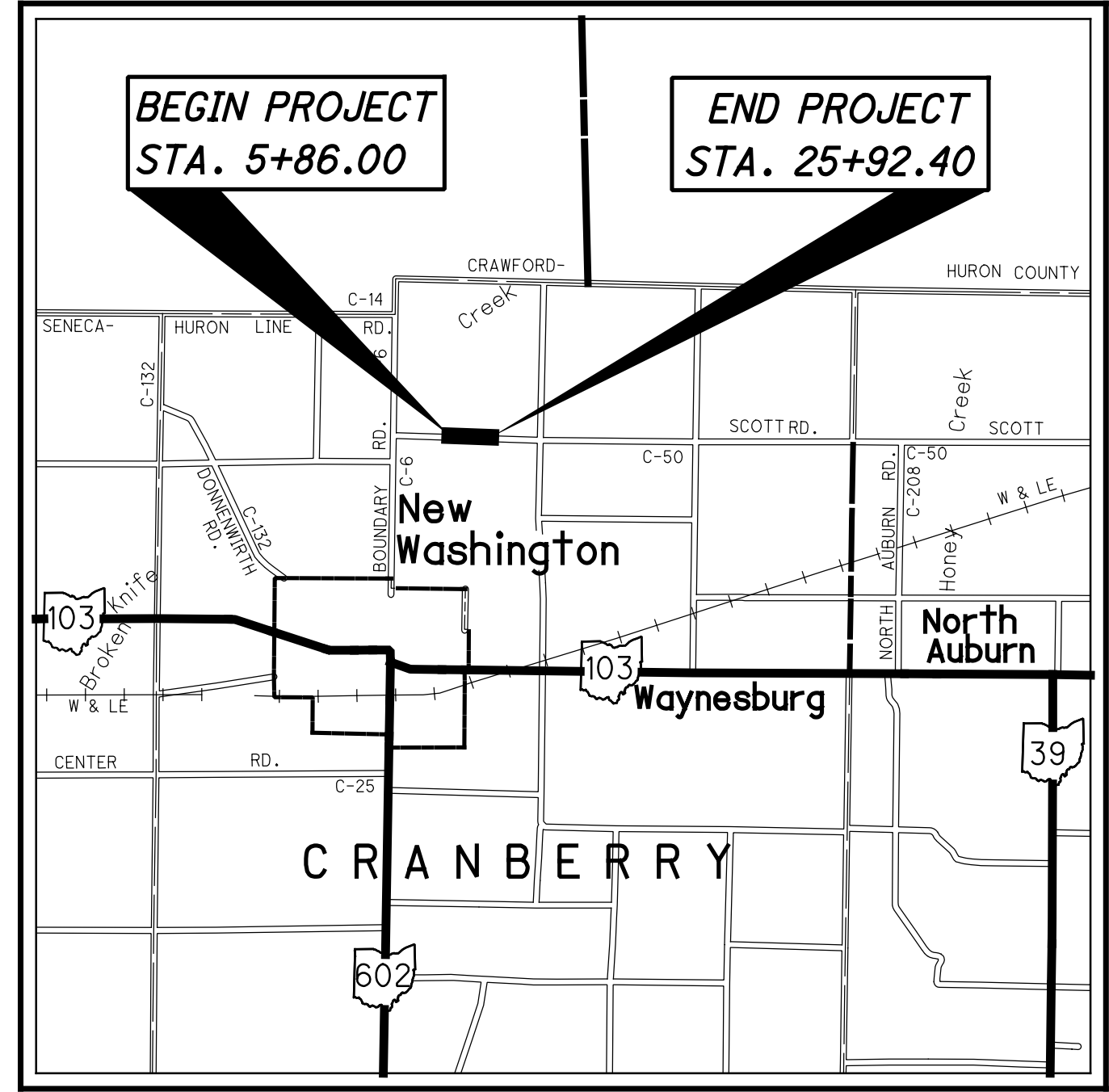
APPROVED \_\_\_\_\_  
DATE \_\_\_\_\_ CRAWFORD COUNTY COMMISSIONER

APPROVED \_\_\_\_\_  
DATE \_\_\_\_\_ CRAWFORD COUNTY COMMISSIONER

APPROVED \_\_\_\_\_  
DATE \_\_\_\_\_ ENGINEER, CRAWFORD COUNTY

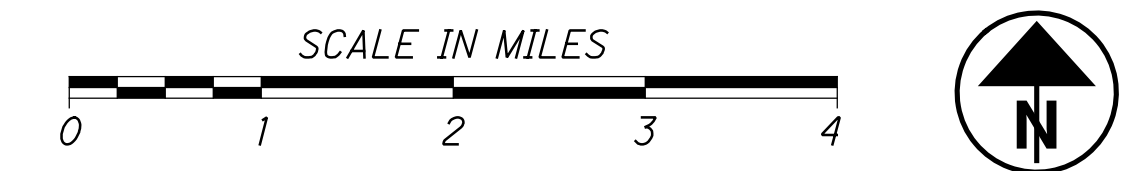
APPROVED \_\_\_\_\_  
DATE \_\_\_\_\_ DISTRICT DEPUTY DIRECTOR

APPROVED \_\_\_\_\_  
DATE \_\_\_\_\_ DIRECTOR, DEPARTMENT OF TRANSPORTATION



**LOCATION MAP**

LATITUDE: 40°58'50" LONGITUDE: 82°50'40"



PORTION TO BE IMPROVED	—————
INTERSTATE HIGHWAY	—————
FEDERAL ROUTES	—————
STATE ROUTES	—————
COUNTY & TOWNSHIP ROADS	—————
OTHER ROADS	—————

**DESIGN DESIGNATION**

CURRENT ADT (2019)	2300
DESIGN YEAR ADT (2039)	3150
DESIGN HOURLY VOLUME (2039)	315
DIRECTIONAL DISTRIBUTION	55%
TRUCKS (24 HOUR B&C)	3%
DESIGN SPEED	55 MPH
LEGAL SPEED	55 MPH
DESIGN FUNCTIONAL CLASSIFICATION:	
07 LOCAL ROAD (RURAL)	
NHS PROJECT	NO

**DESIGN EXCEPTIONS**

NONE REQUIRED

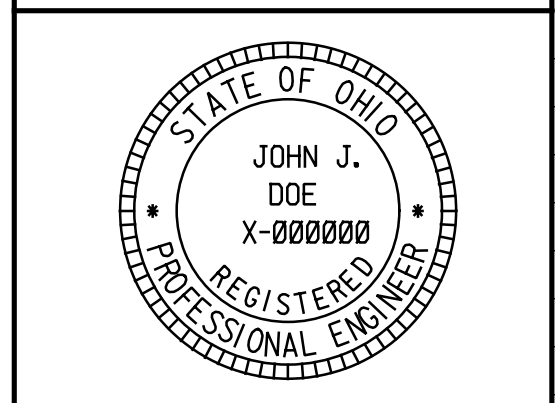
**ADA DESIGN WAIVERS**

NONE REQUIRED

**UNDERGROUND UTILITIES**  
Contact Two Working Days Before You Dig  
**OHIO811.org**  
Before You Dig  
OHIO811, 8-1-1, or 1-800-362-2764  
(Non-members must be called directly)

**PLAN PREPARED BY:**  
JOHN DOE CONSULTING ENGINEERS, INC.  
9999 ENGLISH DRIVE  
COMPUTERLAND, OHIO 00000

**ENGINEERS SEAL:**



SIGNED: *John J. Doe*  
DATE: 4/19/19

**INDEX OF SHEETS:**

TITLE SHEET	1
SCHEMATIC PLAN	2
TYPICAL SECTIONS	3
GENERAL NOTES	4
DETOUR PLAN	5
MAINTENANCE OF TRAFFIC	6-8
GENERAL SUMMARY	9
CALCULATIONS & SUBSUMMARIES	10
PROJECT SITE PLAN	11
PLAN & PROFILE	12-17
CROSS SECTIONS	18-25
TRAFFIC CONTROL	26
RIGHT OF WAY	27-35
SOIL PROFILES	

STANDARD CONSTRUCTION DRAWINGS				SUPPLEMENTAL SPECIFICATIONS	SPECIAL PROVISIONS
		SEE PART 1		SEE PART 1	SEE PART 1

FEDERAL PROJECT NO. **E025 (319)**  
CONSTRUCTION PROJECT NO. **24988**  
RAILROAD INVOLVEMENT **NONE**  
**CRA - C.R. 31 (SCOTT RD.) PART 2**  
1/35