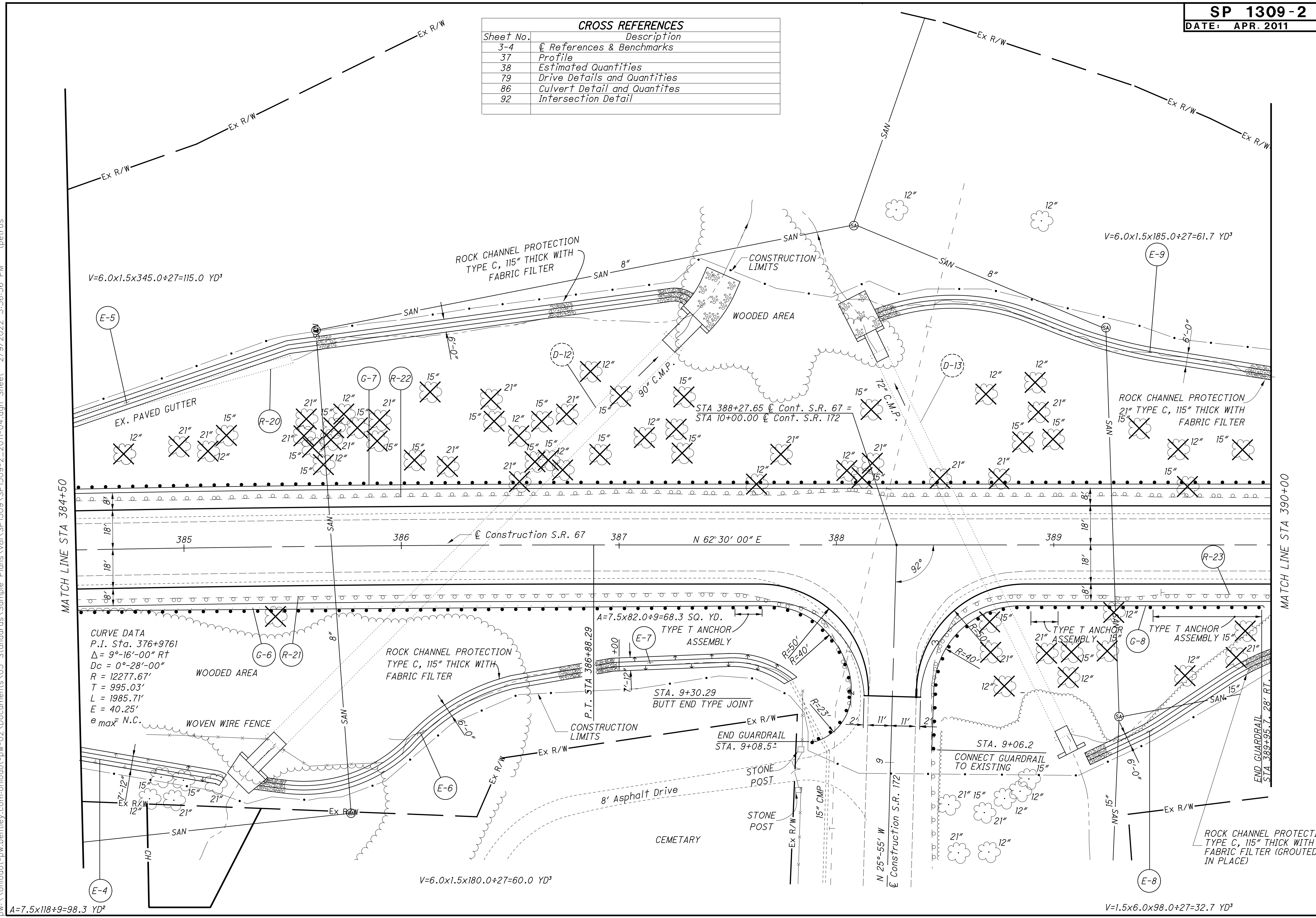


CALCULATED
M/JG
CHECKED
DSN

0 10 20 30 40
HORIZONTAL
SCALE IN FEET

CROSS REFERENCES	
Sheet No.	Description
3-4	References & Benchmarks
37	Profile
38	Estimated Quantities
79	Drive Details and Quantities
86	Culvert Detail and Quantities
92	Intersection Detail



$V=6.0 \times 1.5 \times 345.0 \div 27 = 115.0 \text{ YD}^3$

$V=6.0 \times 1.5 \times 185.0 \div 27 = 61.7 \text{ YD}^3$

CURVE DATA
P.I. Sta. 376+9761
 $\Delta = 9^\circ-16'-00'' \text{ Rt}$
 $Dc = 0^\circ-28'-00''$
 $R = 12277.67'$
 $T = 995.03'$
 $L = 1985.71'$
 $E = 40.25'$
 $e_{max} \text{ N.C.}$

$V=6.0 \times 1.5 \times 180.0 \div 27 = 60.0 \text{ YD}^3$

$V=1.5 \times 6.0 \times 98.0 \div 27 = 32.7 \text{ YD}^3$

$A=7.5 \times 118 \div 9 = 98.3 \text{ YD}^2$

$A=7.5 \times 82.0 \div 9 = 68.3 \text{ SQ. YD.}$

PLAN-S.R. 67
STA. 384+50 TO STA. 390+00

CLI-67-16.86

36
97

p:\ohiodot\pw\ohiodot-pw-02\Documents\03_Standards\Sample_Plans\SP1309-2_2011-04.dgn Sheet 2/9/2022 3:36:36 PM tpetros