

**BENCHMARK DATA**

BM #1 - STA. 929+41.07, OFFSET 51.90' LT,  
NAIL ELEV. = 635.54

FOR ADDITIONAL BENCHMARK INFORMATION, SEE  
ROADWAY PLAN SHEET 2 OF 40.

**NOTES:**

EARTHWORK LIMITS SHOWN ARE APPROXIMATE. ACTUAL  
SLOPES SHALL CONFORM TO PLAN CROSS SECTIONS.

**DESIGN TRAFFIC:**

2015 ADT = 4600      2015 ADTT = 874  
2035 ADT = 5800      2035 ADTT = 1102  
DIRECTIONAL DISTRIBUTION = 55%

**LEGEND:**

- HW - HIGHWATER
- E - EXPANSION
- - ORIGINAL SOIL BORING LOCATION
- REST - RESTRAINED
- ★ - 2ND GUARDRAIL POST STATION
- ▨ - CHANNEL EXCAVATION

**HYDRAULIC DATA**

DRAINAGE AREA = 428 sq miles  
Q(25) = 10800 cfs      V(25) = 6.0 ft/s  
Q(100) = 13000 cfs      V(100) = 6.6 ft/s  
STRUCTURE CLEARS THE 25 YEAR DESIGN HW BY 0.87 FEET.

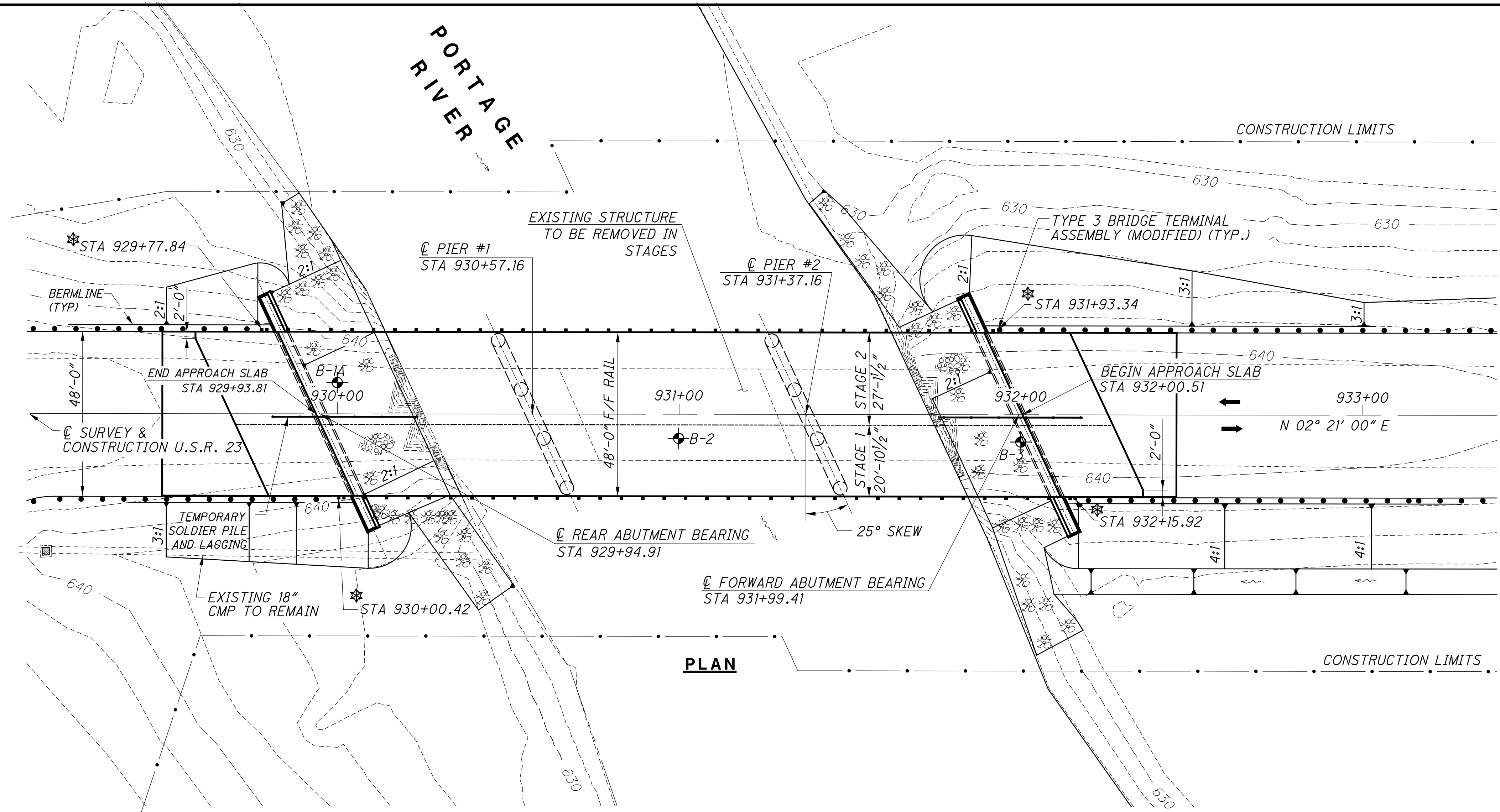
**EXISTING STRUCTURE  
(TO BE REMOVED)**

TYPE: CONTINUOUS STEEL BEAM WITH COMPOSITE REINFORCED  
CONCRETE DECK AND SUPERSTRUCTURE  
SPANS: 46'-0"±, 58'-0"±, 46'-0"± C/C BEARINGS  
ROADWAY: 27'-0"± F/F RAIL  
LOADING: H-15  
SKEW: 25° RF  
APPROACH SLABS: NONE  
ALIGNMENT: TANGENT  
CROWN: 3/16" PER FOOT  
STRUCTURAL FILE NUMBER: 8701504  
DATE BUILT: 1945      CONDITION: FAIR  
DISPOSITION: TO BE REMOVED IN STAGES

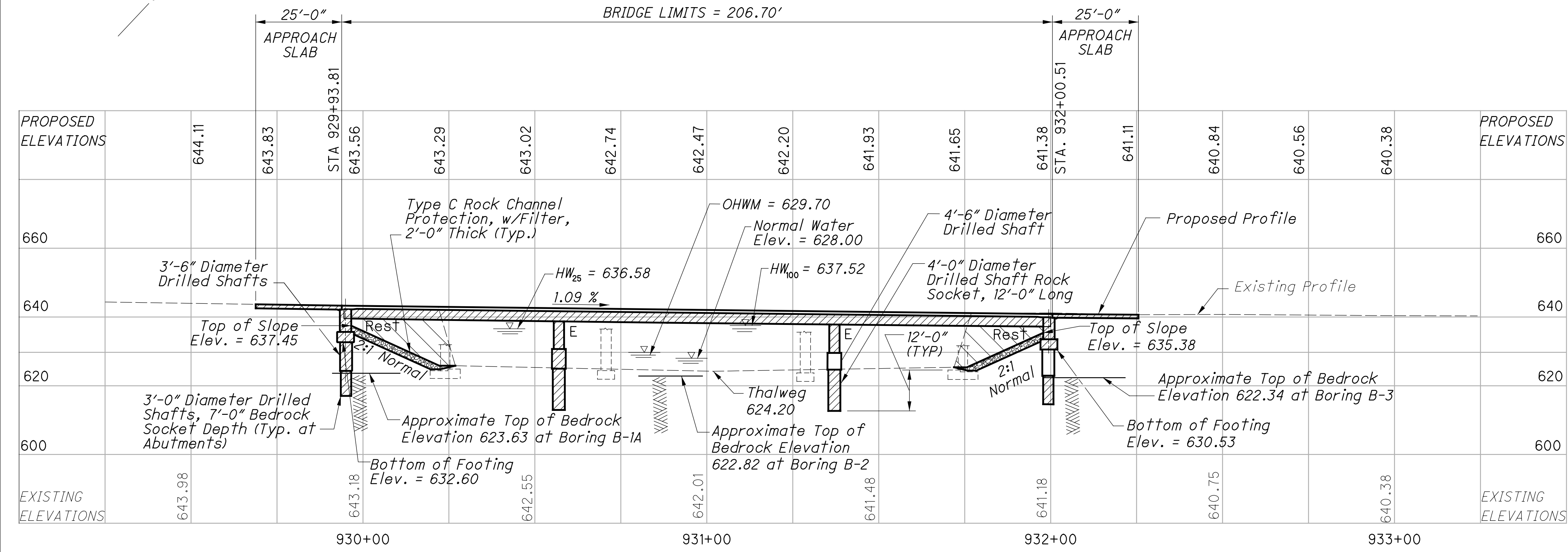
**PROPOSED STRUCTURE**

TYPE: 3-SPAN CONTINUOUS A588 WEATHERING STEEL BEAM  
WITH COMPOSITE REINFORCED CONCRETE DECK ON CAP  
AND COLUMN PIERS, AND SEMI-INTEGRAL ABUTMENT ON  
DRILLED SHAFTS  
SPANS: 62'-3", 80'-0", 62'-3" C/C BEARINGS  
ROADWAY: 48'-0" F/F GUARDRAIL  
LOADING: HS25 CASE II AND ALTERNATE MILITARY  
SKEW: 25° RF TO C/SURVEY & CONSTRUCTION  
APPROACH SLABS: 25'-0" LONG (AS-1-81)  
WEARING SURFACE: MONOLITHIC CONCRETE  
ALIGNMENT: TANGENT  
CROWN: 3/16" PER FOOT  
DECK AREA = 9,922 SQ.FT.  
COORDINATES: LATITUDE 41°25'27.21"N  
LONGITUDE 83°25'12.05"W

**SITE PLAN**  
**BRIDGE NO. WOO-23-1760 OVER THE PORTAGE RIVER**  
**STA. 929+93.81 TO STA. 932+00.51**



**PLAN**



**PROFILE ALONG C/SURVEY & CONSTRUCTION U.S. 23**

WOO-23-17.60

MODEL: Sheet PAPER: 34x22 (in.) DATE: 2/9/2022 TIME: 3:46:37 PM USER: tpeffros  
 p:\ehlodot-pw\benfley.com\ohdot-pw-02\Documents\03\_Standards\Sample\_Plans\SP1316-1\2020-01.dgn

SFN	8701512
DESIGN AGENCY	ODOT-CO STRUCTURAL ENGINEERING
DESIGNER	BCW
CHECKER	DB
REVIEWER	TAA
PROJECT ID	07-13-17
SUBSET	123456
SHEET	1
TOTAL	20
TOTAL	40