

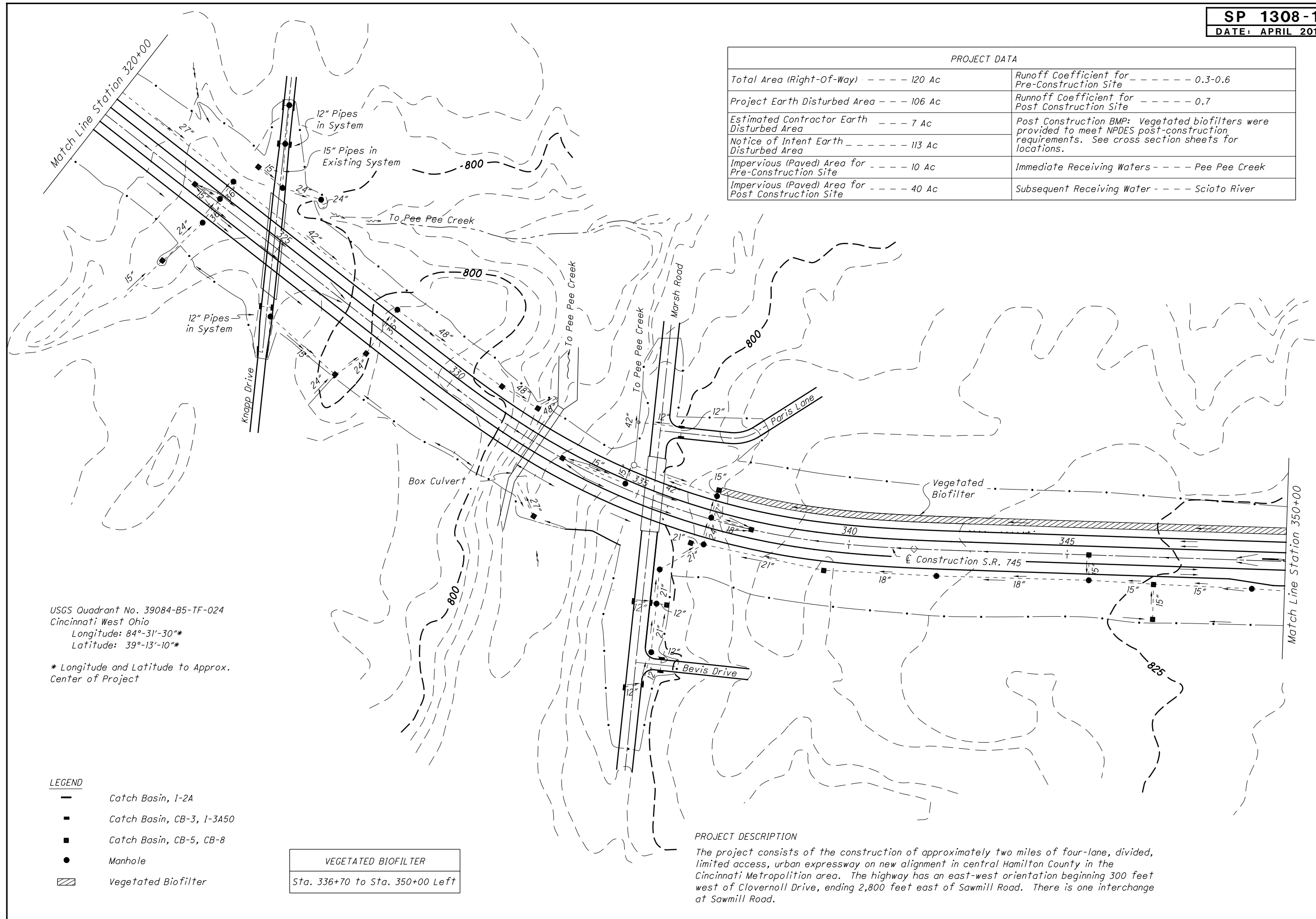


SHEET NO.	202		601		611										605					FOR INFORMATION ONLY					DRAINAGE SUBSUMMARY
	CATCH BASIN ABANDONED	ROCK CHANNEL PROTECTION, TYPE D WITH FILTER	6" CONDUIT, TYPE B, 707.17 NON-PERFORATED, ASTM D-3034 SDR 35, SS931 OR SS944	12" CONDUIT, TYPE C	15" CONDUIT, TYPE C	21" CONDUIT, TYPE B	30" CONDUIT, TYPE B	CONDUIT, BORED OR JACKED: 6", TYPE B	6" CONDUIT, TYPE F	CATCH BASIN, NO. 4	CATCH BASIN, NO. 5, AS PER PLAN	CATCH BASIN ADJUSTED TO GRADE	CATCH BASIN RECONSTRUCTED TO GRADE	PRECAST REINFORCED CONCRETE OUTLET	4" SHALLOW PIPE UNDERDRAINS	4" UNCLASSIFIED PIPE UNDERDRAINS	4" SHALLOW PIPE UNDERDRAINS	4" UNCLASSIFIED PIPE UNDERDRAINS	4" ROCK CUT UNDERDRAINS	6"x45° BEND	6"x49° BEND	6"x6" TEE	6"x6" WYE	6"x6" CROSS	
	EACH	CU YD	FT	FT	FT	FT	FT	FT	FT	EACH	EACH	EACH	EACH	EACH	FT	FT	FT	FT	FT	EACH	EACH	EACH	EACH	EACH	
117								35	222					3	2793					3	2	1		1	
118								42	4000					1	4000					6	2	2		2	
119	1				105			260	1					4	3783				267	4	2	2			
120								26						1	50				3947		4		2	1	
121		23				6	6	50	180	1	1	1						4000			3	3	2		
122								51	213			1			1660				873	2					
123								112							1882					1			2		
124								90				1			3984					3	2	2			
125			25					98					1		3683	283				5			1		
126	1				108			160	1					2	4071					5	2	3			
127								113						1	3650	350				4					
128								196						4	4000					4		3			
129	1				107			188	1					4	4000					4		2			
130			25					130						1	4000					4		2			
131								198						4	4000					2	2	2	1	1	
132								123						2	4000					2			2		
133								144						3	4000					2	2	2		1	
134								171				1		3	4577					4	2	3	1		
135								27						2	3160					2	3				
135A			50					156						1	2024					2	2	2			
136								60						3			928					2			
137								26						1			836	47			2				
138								24						1			542	50			1		1		
139								40				1		2			958				2			1	
142								56						3			1122				3				
143								18						1			720	50			2		1		
144								38						2			814				2				
145								38						2			1218				4				
146								40						2			822				2	2	1		
147								34						2			720				2			1	
TOTALS CARRIED TO GENERAL SUMMARY	3	23	100	215	105	6	6	163	3196	3	1	5	2	56	63317	633	8680	147	9087						86 267



CALCULATED: JOH  
CHECKED: JDH

PROJECT DATA	
Total Area (Right-Of-Way) - - - - - 120 Ac	Runoff Coefficient for Pre-Construction Site - - - - - 0.3-0.6
Project Earth Disturbed Area - - - - - 106 Ac	Runoff Coefficient for Post Construction Site - - - - - 0.7
Estimated Contractor Earth Disturbed Area - - - - - 7 Ac	Post Construction BMP: Vegetated biofilters were provided to meet NPDES post-construction requirements. See cross section sheets for locations.
Notice of Intent Earth Disturbed Area - - - - - 113 Ac	
Impervious (Paved) Area for Pre-Construction Site - - - - - 10 Ac	Immediate Receiving Waters - - - - - Pee Pee Creek
Impervious (Paved) Area for Post Construction Site - - - - - 40 Ac	Subsequent Receiving Water - - - - - Scioto River



USGS Quadrant No. 39084-B5-TF-024  
Cincinnati West Ohio  
Longitude: 84°-31'-30"\*  
Latitude: 39°-13'-10"\*  
\* Longitude and Latitude to Approx. Center of Project

- LEGEND**
- Catch Basin, I-2A
  - Catch Basin, CB-3, I-3A50
  - Catch Basin, CB-5, CB-8
  - Manhole
  - ▨ Vegetated Biofilter

**VEGETATED BIOFILTER**  
Sta. 336+70 to Sta. 350+00 Left

**PROJECT DESCRIPTION**  
The project consists of the construction of approximately two miles of four-lane, divided, limited access, urban expressway on new alignment in central Hamilton County in the Cincinnati Metropolitan area. The highway has an east-west orientation beginning 300 feet west of Cloverhill Drive, ending 2,800 feet east of Sawmill Road. There is one interchange at Sawmill Road.

**PROJECT SITE PLAN**  
**STA. 320+00 TO STA. 350+00**

**HAM-745-18.36**



SHEET NO.	REFERENCE NO.	LOCATION	STATION		SIDE	202			621			642						
			FROM	TO		RAISED PAVEMENT MARKER REMOVED	RPM (2-way yellow)	RPM (1-way white)	EDGE LINE (White)	EDGE LINE, TYPE 1 (White)	CENTER LINE, TYPE 1 (Dashed-Solid)	CHANNELIZING LINE, TYPE 1	STOP LINE, TYPE 1	LANE ARROW, TYPE 1	WORD ON PAVEMENT, 96", TYPE 1	ISLAND MARKING, TYPE 1 (Yellow)		
			EACH	EACH		EACH	MILE	MILE	MILE	FT	FT	EACH	EACH	SQ FT				
56	CL-1	Const. S.R. 17	46+73	48+00	RT.	7	7				0.024							
56	CL-2	Const. S.R. 17	47+90	48+47	LT.		2				0.010							
56	CL-3	Const. S.R. 17	48+00	48+47	RT.	2	11				0.009							
56	CL-4	Const. S.R. 17	48+47	53+00	LT.		11				0.086							
56	CL-5	Const. S.R. 17	48+47	53+00	RT.	11	6				0.086							
57	CL-6	Const. S.R. 17	53+00	55+48	LT.	6	6				0.047							
57	CL-7	Const. S.R. 17	53+00	55+48	RT.		12				0.047							
57	CL-8	Const. S.R. 17	55+48	57+86	LT.	12					0.045							
57	CL-9	Const. S.R. 17	55+48	56+00	RT.		3				0.011							
57	CL-10	Const. S.R. 17	58+68	59+25	RT.	3	4				0.011							
57	CL-11	Const. MEYERS RD.	10+40	11+15	CL	4	5				0.014							
57	CL-12	Const. MEYERS RD.	8+55	9+41	CL	5	6				0.016							
58	CL-13	Const. S.R. 17	59+25	60+39	RT.	6	1				0.022							
58	CL-14	Const. S.R. 17	64+16	65+00	CL	1	1				0.016							
58	CL-15	Const. S.R. 17	65+00	65+66	CL	2					0.013							
56	EL-1	Const. RAMP A	10+25	10+65	RT.	2			0.009									
56	EL-2	Const. S.R. 17	45+52	48+00	LT.	12	2			0.047								
56	EL-3	Const. S.R. 17	45+30	48+00	RT.	14	12			0.051								
56	EL-4	Const. RAMP B	9+18	9+75	RT.	3	14		0.011									
56	EL-5	Const. S.R. 17	48+00	53+00	LT.	14	3			0.095								
56	EL-6	Const. S.R. 17	48+00	53+00	RT.	14	14			0.095								
57	EL-7	Const. MEYERS RD.	53+00	11+00	LT.	24	14			0.113								
57	EL-8	Const. MEYERS RD.	53+00	8+55	RT.	23	24			0.111								
57	EL-9	Const. MEYERS RD.	11+15	59+25	LT.	8	23			0.029								
57	EL-10	Const. MEYERS RD.	8+55	59+25	RT.	11	8			0.041								
58	EL-11	Const. S.R. 17	59+25	65+00	LT.	21	11			0.109								
58	EL-12	Const. S.R. 17	59+25	65+00	RT.	16	22			0.109								
58	EL-13	Const. S.R. 17	65+00	65+66	LT.	1	29			0.013								
58	EL-14	Const. S.R. 17	65+00	65+66	RT.	1				0.013								
56	CH-1	Const. S.R. 17	45+52	47+70	LT.						218							
57	CH-2	Const. S.R. 17	56+20	57+86	RT.		11				166							
57	CH-3	Const. S.R. 17	58+68	59+25	LT.		9				57							
58	CH-4	Const. S.R. 17	59+25	60+20	LT.		3				95							
56	IM-1	Const. S.R. 17	44+51	45+09	RT.		5			0.019	110							
56	IM-2	Const. S.R. 17	45+52	46+73	RT.	6	6			0.046	10							
58	IM-3	Const. S.R. 17	60+39	64+16	LT&RT	11	12			0.143								
56	SL-1	Const. RAMP A	10+28		LT&RT		19					29						
56	SL-2	Const. S.R. 17	50+07	50+27	LT.							20				108		
57	SL-3	Const. MEYERS RD.	9+41		LT.							12				26		
57	SL-4	Const. MEYERS RD.	10+40		RT.							14				255		
56		Const. S.R. 17	45+62									2						
56		Const. S.R. 17	46+62										2		2			
56		Const. S.R. 17	47+60										2					
56		Const. S.R. 17	52+11										1					
56		Const. S.R. 17	52+25										1					
57		Const. S.R. 17	56+98											1				
57		Const. S.R. 17	56+20											1				
57		Const. S.R. 17	57+76											1				
57		Const. S.R. 17	58+78											1				
<b>SUBTOTALS</b>						240		112	204	0.020		0.663	656	75	9	3	389	
<b>TOTALS CARRIED TO GENERAL SUMMARY</b>						240		316		0.84		0.66	656	75	9	3	389	

PAVEMENT MARKING SUBSUMMARY

UNI-17-3.14

SHEET NO.	REFERENCE NO.	LOCATION	STATION	SIDE	CODE	SIZE (INCHES)	630										SIGNED	DATE	
							SIGN, FLAT SHEET	ONE WAY SUPPORT, No. 3 POST	GROUND MOUNTED SUPPORT, No. 3 POST	GROUND MOUNTED STRUCTURAL BEAM SUPPORT, W10x12	REMOVAL OF GROUND MOUNTED SIGN & RE-ERECTION	REMOVAL OF GROUND MOUNTED SIGN & DISPOSAL	REMOVAL OF GROUND MOUNTED POST SUPPORT & DISPOSAL	REMOVAL OF GROUND MOUNTED MAJOR SIGN & DISPOSAL	SIGN ERECTED, EXTRUSHEET	GROUND MOUNTED STRUCTURAL BEAM SUPPORT FOUNDATION			BREAKAWAY STRUCTURAL BEAM CONNECTION
							SQ FT	FT	FT	FT	EACH	EACH	EACH	EACH	SQ FT	EACH	EACH		
56	S1	⊕ Const. S.R. 17	44+91	LT.	M3-1-24	24" x 12"	2.0												
					M1-1-24-2	24" x 24"	4.0												
					M6-1-24	24" x 18"	3.0												
					M2-H7-66	66" x 24"	11.0												
56	S2		40+41	LT.	R1-1-48	48" x 48"	16.0	14.5	13.5										
					R6-1-48	48" x 18"	6.0												
					R5-1-36	36" x 36"	9.0												
					R6-1-48	48" x 18"	6.0												
56	S3		45+60	LT.	R3-H8ba-36	36" x 30"	7.5		12.5										
56	S4		47+80	LT.	D1-H6	192" x 72"				17.5-18.0				96	2	2			
56	S5		48+40	RT.	R3-9b-24	24" x 36"	6.0		14										
56	S6		48+75	LT.	R3-H9j-24	24" x 6"	1.0												
56	S7		49+93	LT.	R3-H8dg-36	36" x 30"	7.5		12.5										
56	S8		50+05	LT.	D-3				10										
56	S9		50+05	LT.	R2-1-30	30" x 30"	6.25		12.5										
56	S10		46+20	RT.	M3-2-24	12" x 24"	2.0			14-14									
			46+20	RT.	M1-5-24-3	24" x 30"	5.0												
56	S10		54+36	RT.	R3-H8dg-36	36" x 30"			7.5										
57	S11		53+00	LT.	M2-1	24" x 12"	2.0												
			53+00	LT.	M1-1-24-2	24" x 24"	4.0		13										
57	S12		55+56	LT.	R3-H9j-24	24" x 6"	1.0												
			55+56	LT.	R3-9b-24	24" x 36"	6.0		14										
57	S13		55+56	RT.	R3-H8bh-36	36" x 30"	7.5		12.5										
57	S14		57+25	RT.	R3-H8bh-36	36" x 30"	7.5		12.5										
57	S15		56+89	LT.	M1-5-30-3	30" x 24"	5.0		11										
57	S16		57+72	RT.	D-3				10										
57	S17		58+31	LT.	R2-1-30	30" x 30"	6.25		13.5-13.5										
			58+31	LT.	R5-H2b-24														
57	S18		58+48	LT.	R2-1-30	30" x 30"	6.25		11										
57	S19		58+65	RT.	R2-1-30	30" x 30"	6.25		13.5-13.5										
			58+65	RT.	R5-H2b-24														
57	S20		59+47	RT.	R2-1-30	30" x 30"	6.25		13.5-13.5										
			59+47	RT.	R5-H2b-24														
58	S21		59+25	LT.	R3-H8bh-36	36" x 30"	7.5		12.5										
58	S22		59+38	RT.	M1-5-24-3	30" x 24"	5.0		11										
58	S23	⊕ Const. S.R. 17	60+86	LT.	R3-H8bh-36	36" x 30"	7.5		12.5										
56	R1	⊕ Const. S.R. 17	44+91	LT.							4	1							
56	R2		40+41	LT.							3	1							
56	R3		47+80	LT.						3		1							
56	R4		47+65	RT.	W6-3						1	1							
56	R5		49+93	LT.							1	1							
56	R6		50+05	LT.							1	1							
56	R7		46+20	RT.							2	1							
56	R8	⊕ Const. S.R. 17	54+36	RT.							1	1							
<b>SUBTOTALS</b>							170.25	14.5	311.5	35.5	3	13	7	1	96	2	2		
<b>TOTALS CARRIED TO GENERAL SUMMARY</b>							170	15	312	36	3	13	7	1	96	2	2		

SIGNING SUBSUMMARY

UNI-17-3.14