

FOUNDATION SOUNDINGS: Foundation design and foundation quantities are based on a study of rod soundings and soil-sampling soundings made at the site. This sounding information may be inspected in the office of the Bureau of Bridges in Columbus or in the Division office, but the State does not guarantee the accuracy thereof.

EXISTING BRIDGE DATA	
Bridge No.	ADA-247-1471
Type	C.I.P.
Span	4 - 24" x 40'
Roadway	18'
Skew	30° R.F.

DRAINAGE AREA = 17.00 Mi.

PROPOSED STRUCTURE
 TYPE: Continuous steel beams with reinforced concr. deck and reinf. concr. substruct.
 SPAN: 44'-55" - 44' 1/2 brgs.
 ROADWAY: 36'-0" w/ guard rails
 LOAD FREQUENCY: CF = 130 (57)
 SKEW: 30° R.F.
 WEARING SURFACE: 3" Monolithic concr.
 APPROACH SLAB: AS-1-54 (25' long).
 ALIGNMENT: Tangent

STATE OF OHIO
 DEPARTMENT OF HIGHWAYS
 BUREAU OF BRIDGES

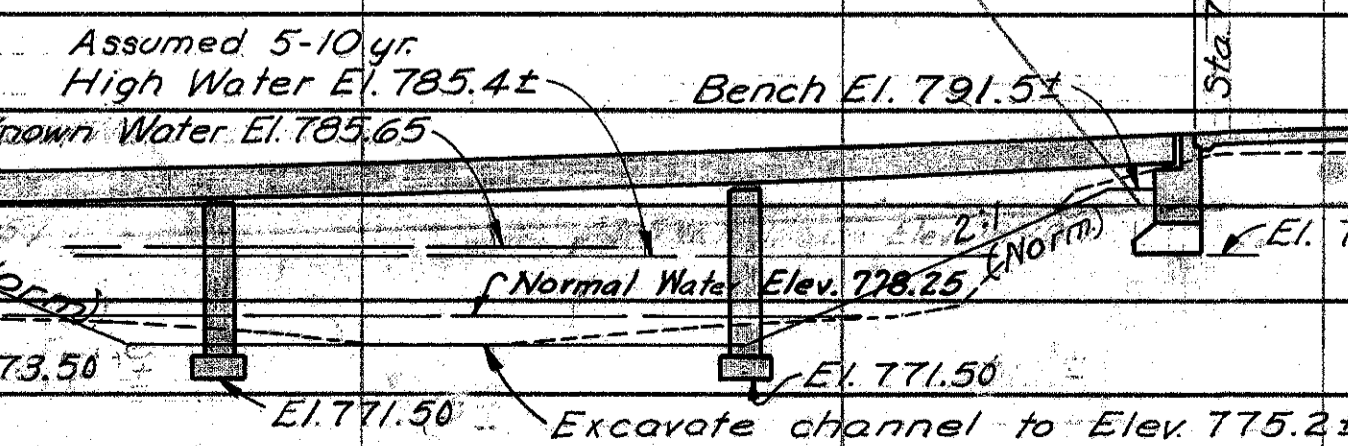
SITE PLAN
 BRIDGE NO. ADA-247-1471
 OVER CHERRY FORK
 ADAMS CO. SR-247
 STA. 775+88.40
 777+36.60

PRESENT TOPOGRAPHY		PROPOSED WORK			
SURVEYED	DRAWN	DESIGNED	DRAWN	CHECKED	REVIEWED
		DGM	DGM	B.D.H.	P.E. &

BM CUT ON CONCRETE APRON ON E. SIDE ADA-247-1471 ELEV. 780.79

Clears Assumed 5-10 yr. H.W. 4.3'±

BRIDGE LIMITS



ADAMS COUNTY
ADA-247(B.95)(A.20)

GENERAL NOTES

REFERENCE shall be made to Standard Drawings CSB-1-55, sheets 1, 2 and 6, revised 2-2-59.

DESIGN SPECIFICATIONS: This structure conforms to the requirements of "Design Specifications for Highway Structures" of the State of Ohio, Department of Highways, dated 9-1-57, together with current revisions thereof.

EXCAVATION QUANTITY for the forward abutment, in addition to that outlined in Sec. E-2.09, includes the removal of material bounded by the proposed bench, by the front vertical plane described in Sec. E-2.09 and by the finished slope of the cut.

EXCAVATION QUANTITY for the rear abutment includes the removal of fill material between the top of the earth bench and the bottom of the abutment crossbeam.

FOUNDATION BEARING PRESSURE: Abutment and pier footings are designed for a maximum bearing pressure of 5 tons per sq. ft.

FOOTINGS shall extend a minimum of 3" into solid rock or to the elevation shown, whichever is lower.

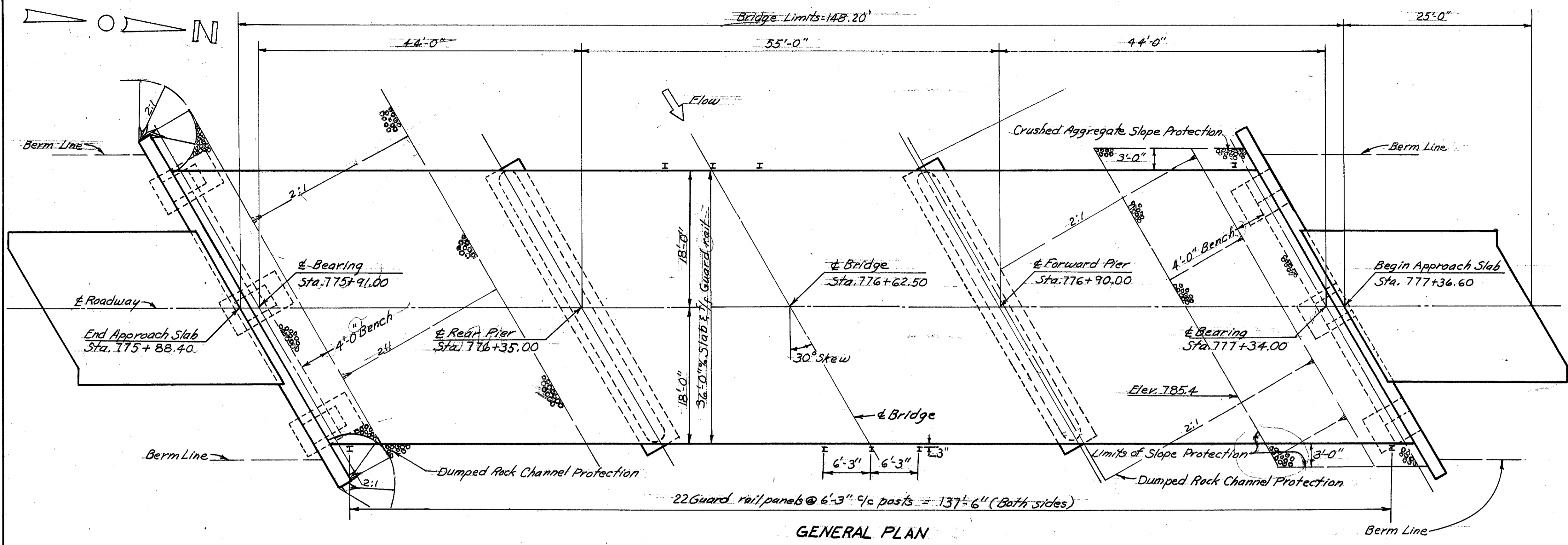
I-10 CRUSHED AGGREGATE SLOPE PROTECTION shall be provided under the structure at the forward abutment. The aggregate material shall extend from the face of the abutment down to the dumped rock channel protection (approx. Elev. 785.4).

SLAB THICKNESS is 7 1/4" which includes 3/4" for monolithic wearing surface.

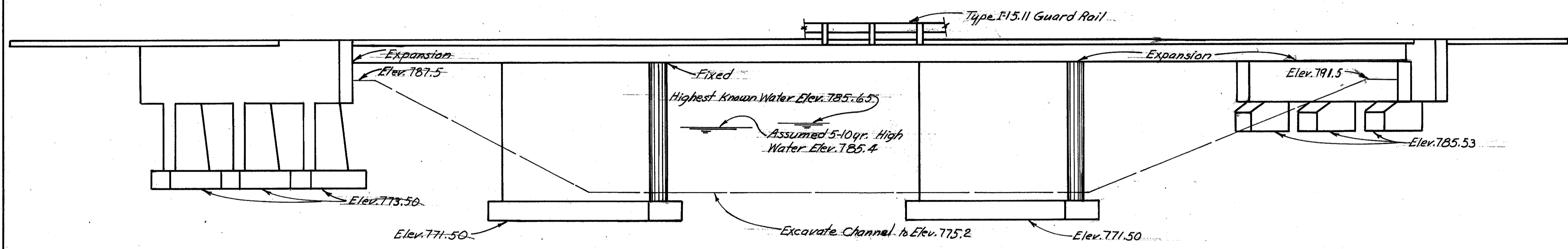
CAMBER: No shop camber is required but beams shall be inspected for actual camber and shall be fabricated and erected with the concave flange up.

(MACHINE FINISH: At the Contractor's option, the concrete bridge deck may be finished by the use of a finishing machine.)

EXISTING STRUCTURE: When no longer needed to maintain traffic the existing structure shall be removed.



GENERAL PLAN



ELEVATION

ESTIMATED QUANTITIES

Item	Total	Unit	Description	Super.	Pier	Abut.	Gen'l.
E-2	Lump	Sum	Cofferdams, cribs and sheeting				Lump
E-2	141	Cu. yds.	Unclassified excavation		5	136	
E-2	62	Cu. yds.	Rock excavation		54	8	
E-3	1210	Cu. yds.	Channel excavation				1210
S-1	133	Cu. yds.	Class "C" concrete, superstructure	133			
S-1	102	Cu. yds.	Class "C" concrete, abutments above footings			102	
S-1	100	Cu. yds.	Class "E" concrete, piers above footings		100		
S-1	60	Cu. yds.	Class "E" concrete, footings		39	21	
S-4	52,487	Lbs.	Reinforcing steel	35,875	6,663	9,949	
S-7	103,300	Lbs.	Structural steel	103,300			
S-8	103,300	Lbs.	Field painting of structural steel	103,300			
S-14	296.40	Lin. ft.	Railing (Type I-15.11 with galvanized steel posts and bolts)	296.40			
S-24	Lump	Sum	Removal of existing structure				Lump
S-29	21	Cu. yds.	Porous backfill			21	
I-10	95	Sq. yds.	Crushed aggregate slope protection			95	
I-10	300	Cu. yds.	Dumped rock channel protection				300

STATE OF OHIO
DEPARTMENT OF HIGHWAYS
DIVISION OF DESIGN AND CONSTRUCTION
BUREAU OF BRIDGES

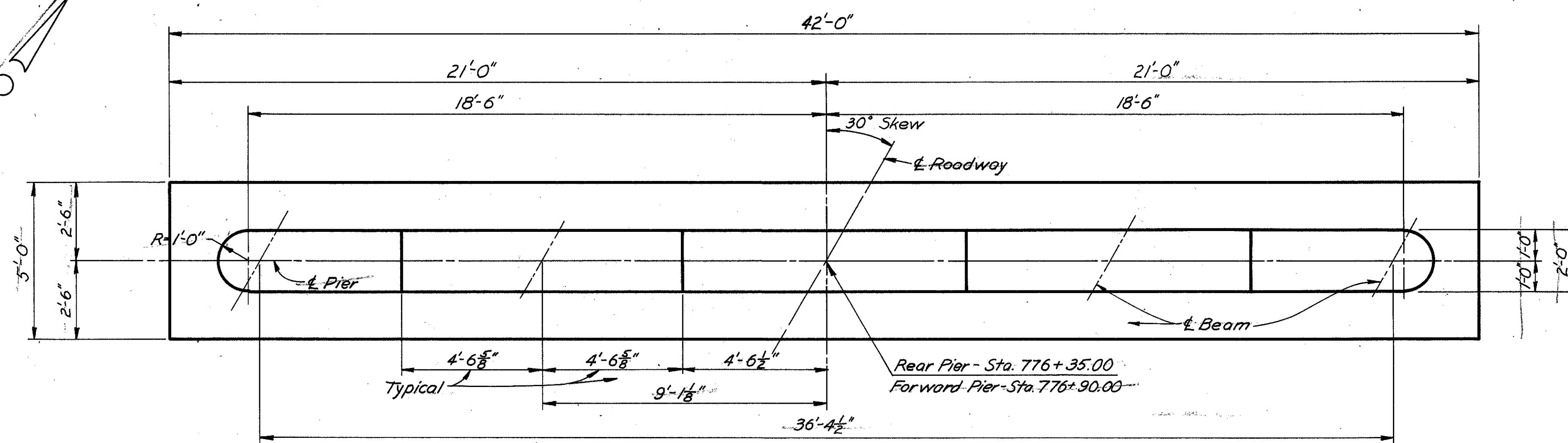
GENERAL PLAN, ELEVATION, NOTES & ESTIMATED QUANTITIES
BRIDGE No. ADA-247-1471
OVER CHERRY FORK
ADAMS COUNTY STA. 775+88.40
STA. 777+36.60

DESIGNED	DRAWN	TRACED	CHECKED	REVIEWED	DATE	REVISED
JEF	JEF	N.L.D.	NEY	BFG	1/22-61	

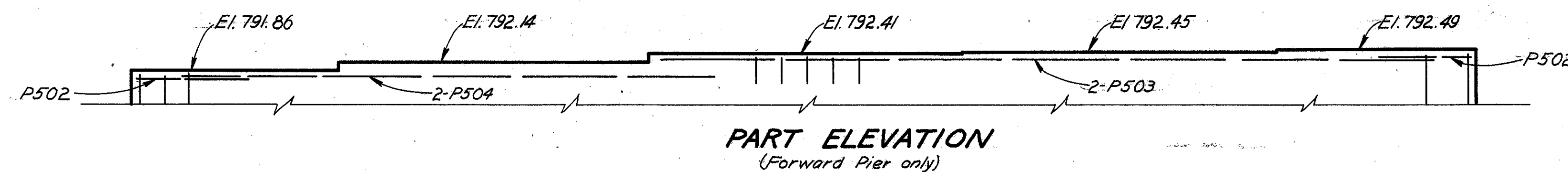
FED. RD. DIVISION	STATE	PROJECT
2	OHIO	

190

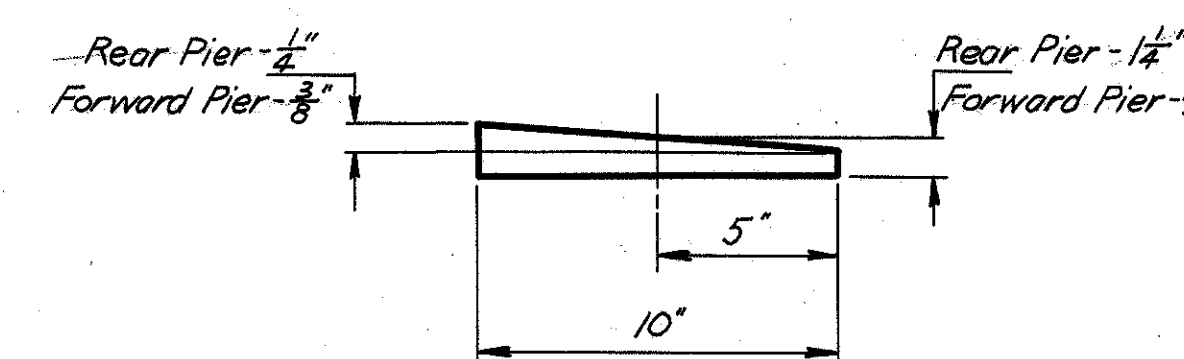
ADAMS COUNTY
ADA-247(895)/4.20



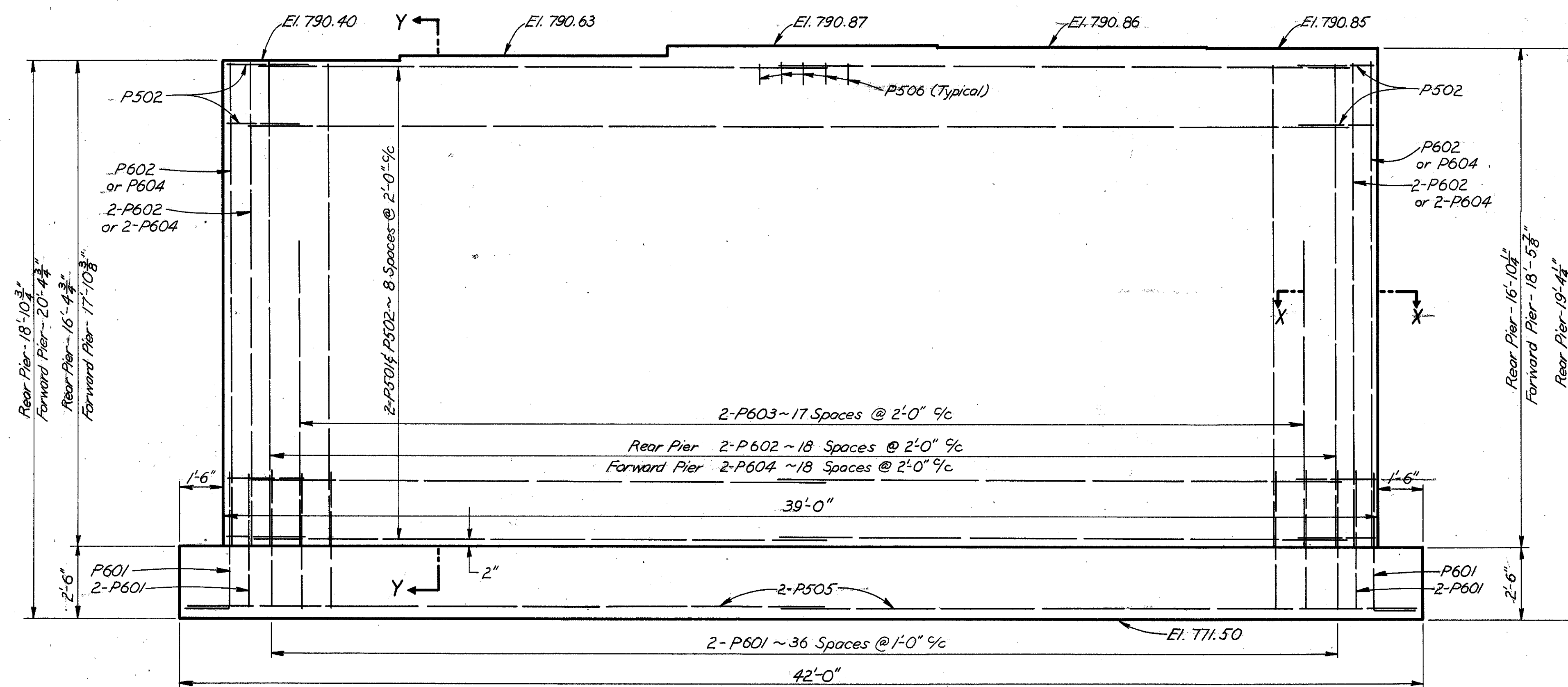
PLAN



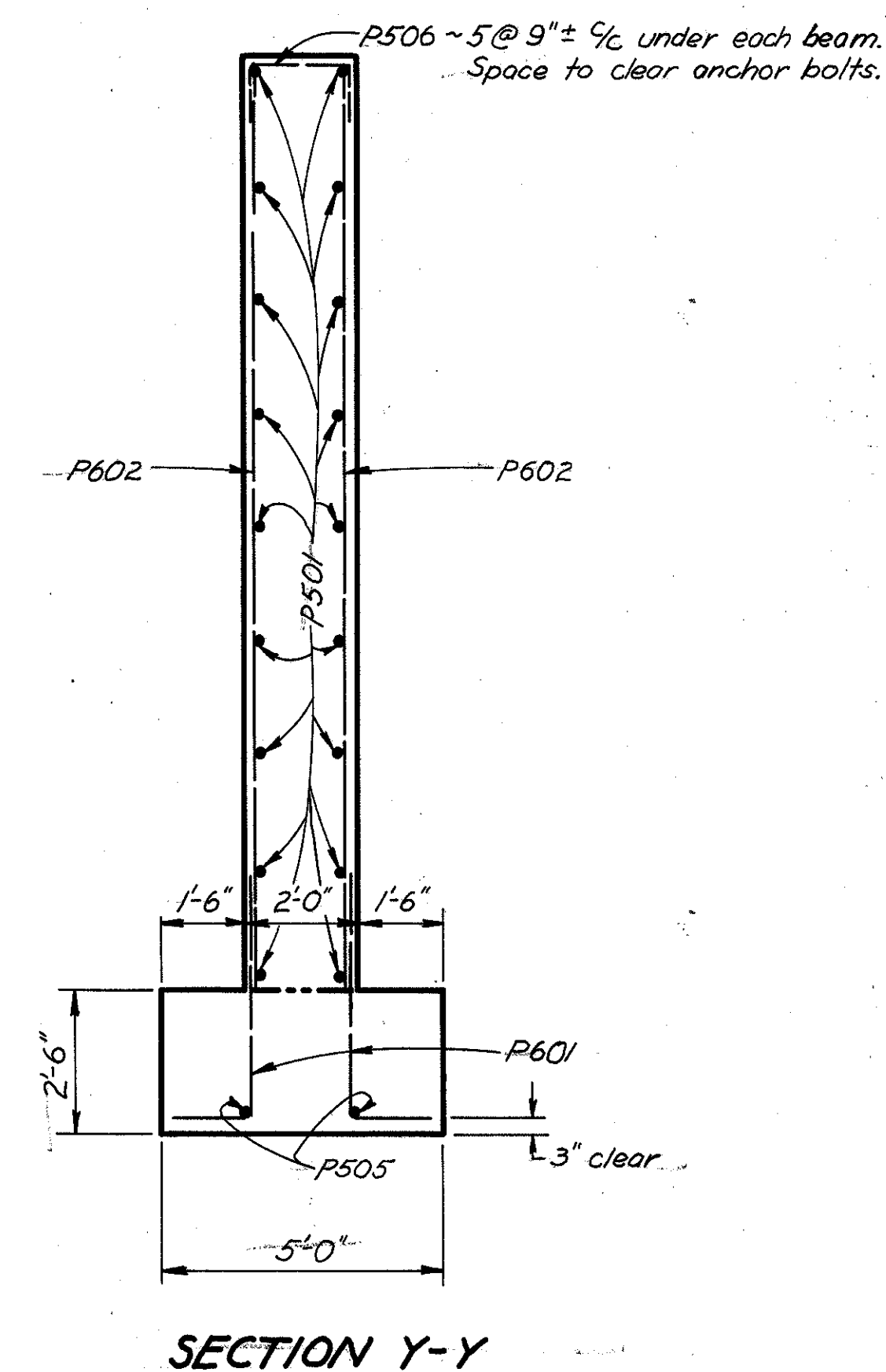
PART ELEVATION
(Forward Pier only)



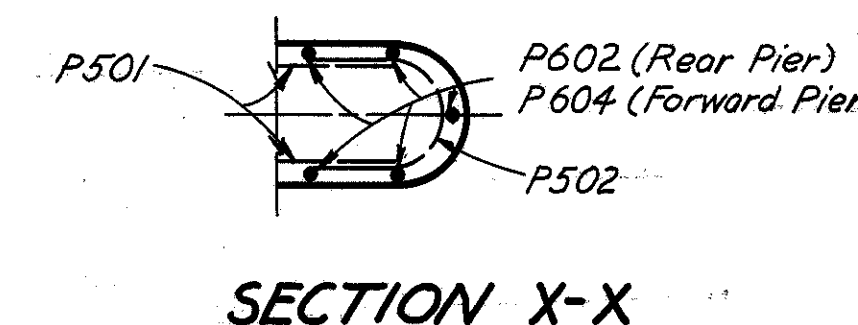
BEVELED SOLE PLATES



ELEVATION



SECTION Y-Y



SECTION X-X

CONCRETE shall be Class "E"

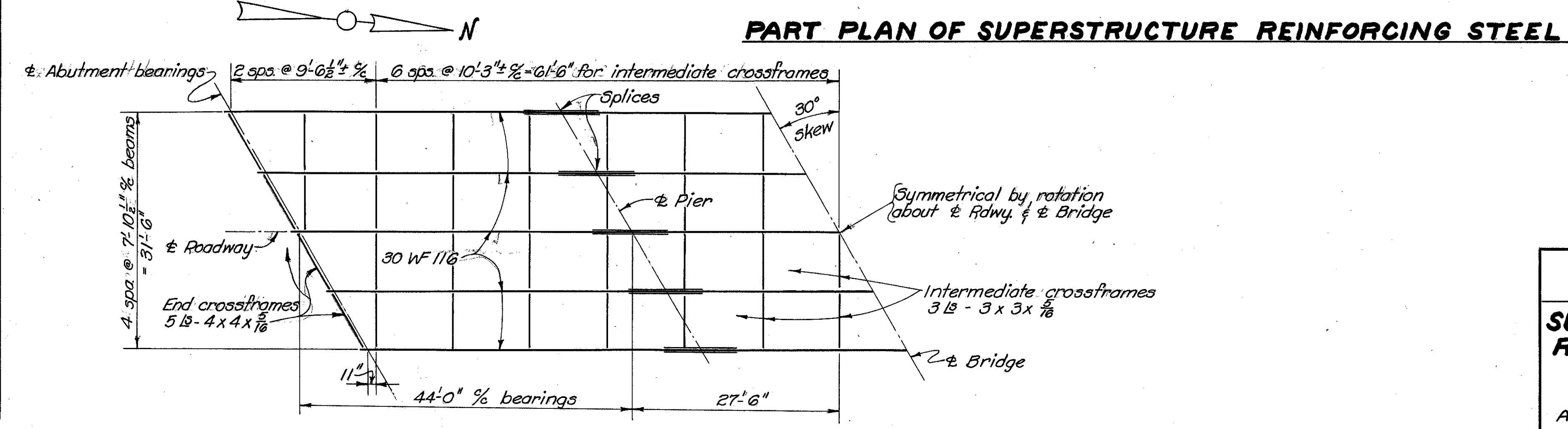
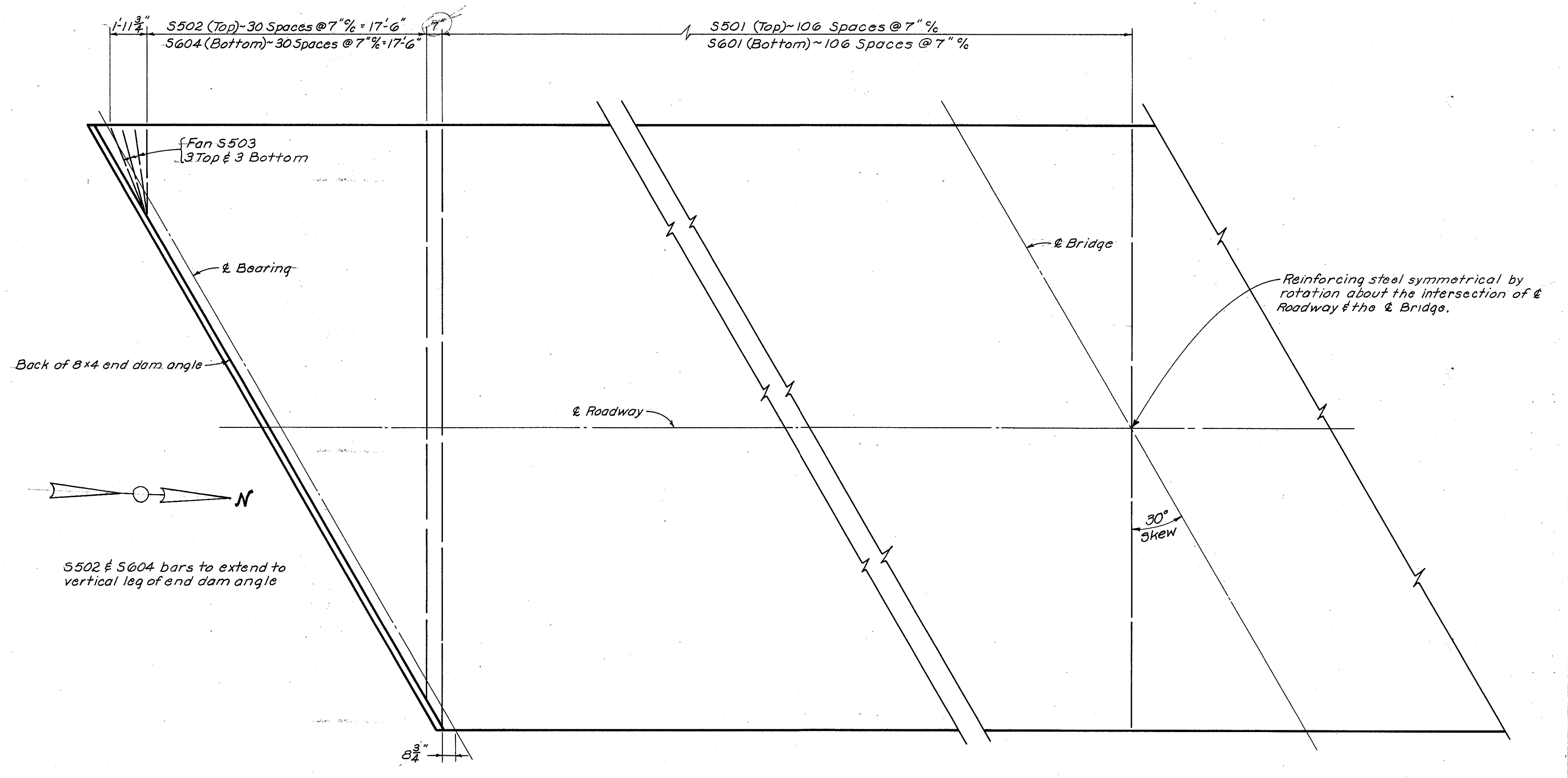
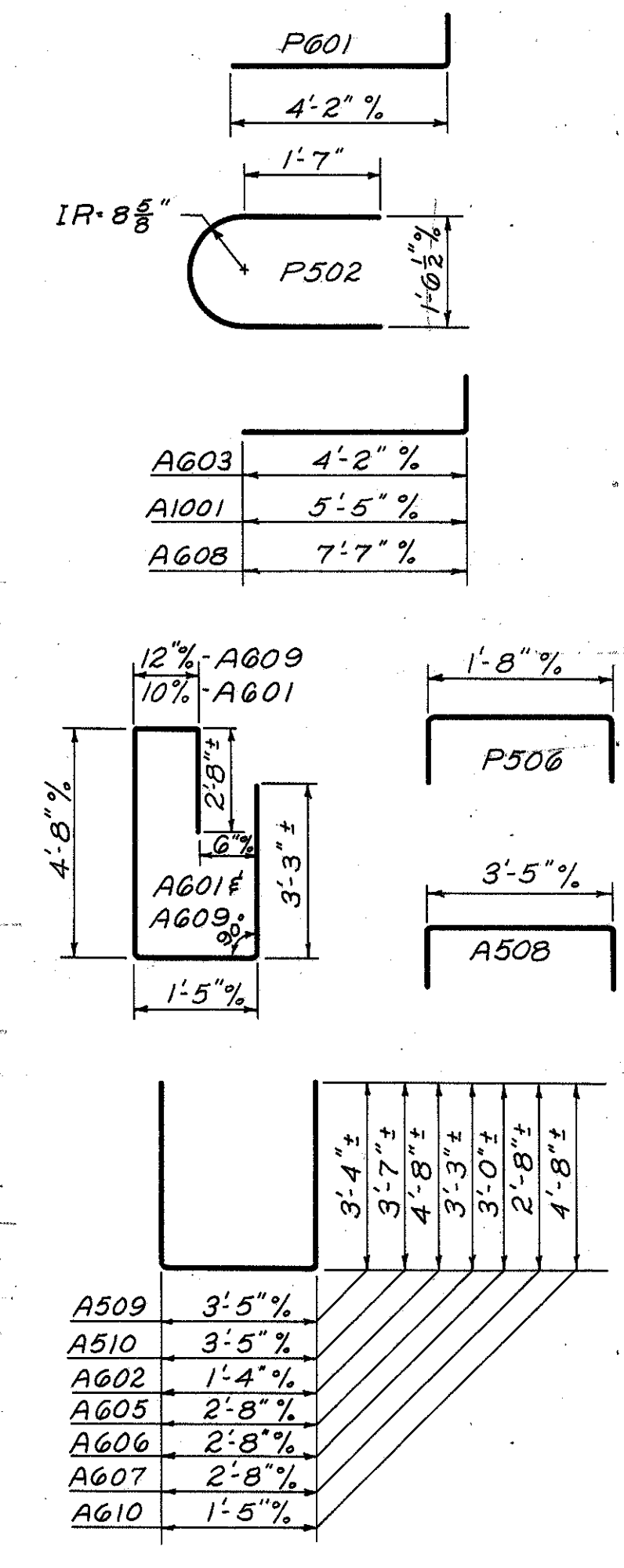
STATE OF OHIO DEPARTMENT OF HIGHWAYS DIVISION OF DESIGN AND CONSTRUCTION BUREAU OF BRIDGES						
PIER DETAILS						
BRIDGE No. ADA-247-1471 OVER CHERRY FORK						
ADAMS COUNTY				STA. 775 + 88.40 STA. 777 + 36.60		
DESIGNED	DRAWN	TRACED	CHECKED	REVIEWED	DATE	REVISED
JEF	JEF	AAK	NEY	BFG	2-28-61	

ADAMS COUNTY
ADA - 247(B.95)(14.20)

REINFORCING STEEL LIST					BENDING DIAGRAMS	
MARK	NO.	LENGTH	WEIGHT	SHP		
Superstructure						
S601	213	35'-8"	11,411	5		
S602	212	37'-6"	11,941	5		
S603	44	22'-0"	1,454	5		
S604	2 Series of 31	34'-8 1/2" to 4'-5"	1823	5	Vary by increments of 1'-0 1/8"	
S501	213	35'-8"	7,924	5		
S502	2 Series of 31	34'-8 1/2" to 4'-5"	1266	5	Vary by increments of 1'-0 1/8"	
S503	12	4'-6"	56	5		
Piers						
P601	160	4'-10"	1,161	B		
P602	44	16'-2"	1,068	S		
P603	72	11'-6"	1,244	S		
P604	44	17'-8"	1,168	S		
P501	72	19'-3"	1,446	S		
P502	38	4'-5"	175	B		
P503	2	22'-9"	48	S		
P504	2	15'-7"	33	S		
P505	8	21'-8"	181	S		
P506	50	2'-8"	139	B		
Abutments						
A1001	30	6'-6"	839	B		
A1002	30	13'-4"	1,721	S		
A901	16	21'-2"	1,151	S		
A902	4	27'-6"	374	S		
A801	16	21'-0"	897	S		
A802	4	28'-1"	300	S		
A601	23	12'-2"	420	B		
A602	12	10'-4"	186	B		
A603	18	4'-10"	131	B		
A604	18	10'-5"	282	S		
A605	12	8'-10"	159	B		
A606	12	8'-4"	150	B		
A607	6	7'-8"	69	B		
A608	24	8'-3"	297	B		
A609	23	12'-4"	426	B		
A610	12	10'-5"	188	B		
A501	16	8'-10"	147	S		
A502	12	26'-11"	337	S		
A503	12	27'-7"	345	S		
A504	27	8'-2"	230	S		
A505	6	11'-3"	70	S		
A506	6	8'-4"	52	S		
A507	12	8'-0"	100	S		
A508	50	4'-5"	230	B		
A509	62	9'-9"	631	B		
A510	18	10'-3"	192	B		
A511	4	6'-0"	25	S		
Replacement Bars						
RE1001	1	7'-2"	-	S		
RE901	1	6'-10"	-	S		
RE801	1	6'-6"	-	S		
RE601	2	5'-11"	-	S		
RE501	1	5'-7"	-	S		

REPLACEMENT BARS: If reinforcing bars are fabricated from stock which has previously been tested and approved by the Ohio Highway Testing Laboratory, test samples as provided in Sec. 5-A.02 need not be furnished and replacement bars will not be required.

BAR SIZE is indicated in the bar mark. The first digit where three digits are used, and the first two digits where four are used, indicate the bar size number. For example, A601 is a No. 6 size bar and A1001 is a No. 10 size.



STATE OF OHIO
DEPARTMENT OF HIGHWAYS
DIVISION OF DESIGN AND CONSTRUCTION
BUREAU OF BRIDGES

SUPERSTRUCTURE DETAILS & REINFORCING STEEL LIST
BRIDGE No. ADA-247-1471
OVER CHERRY FORK
ADAMS COUNTY Sta. 775+88.40
776+36.60

DESIGNED	DRAWN	TRACED	CHECKED	REVIEWED	DATE	REVISED
J E F	J E F	Penny	NEY	BFG	2-28-61	