

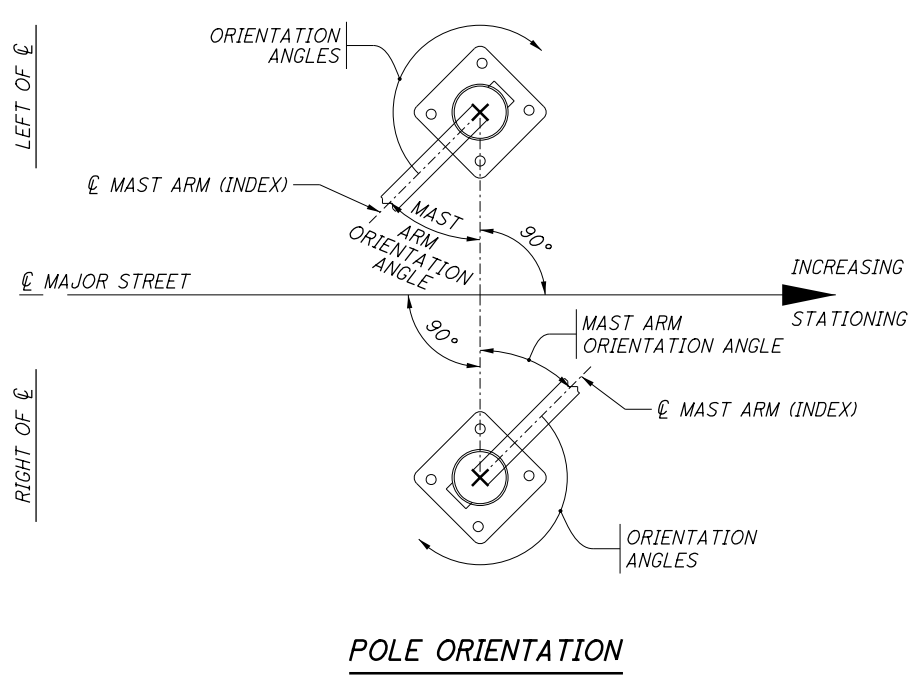
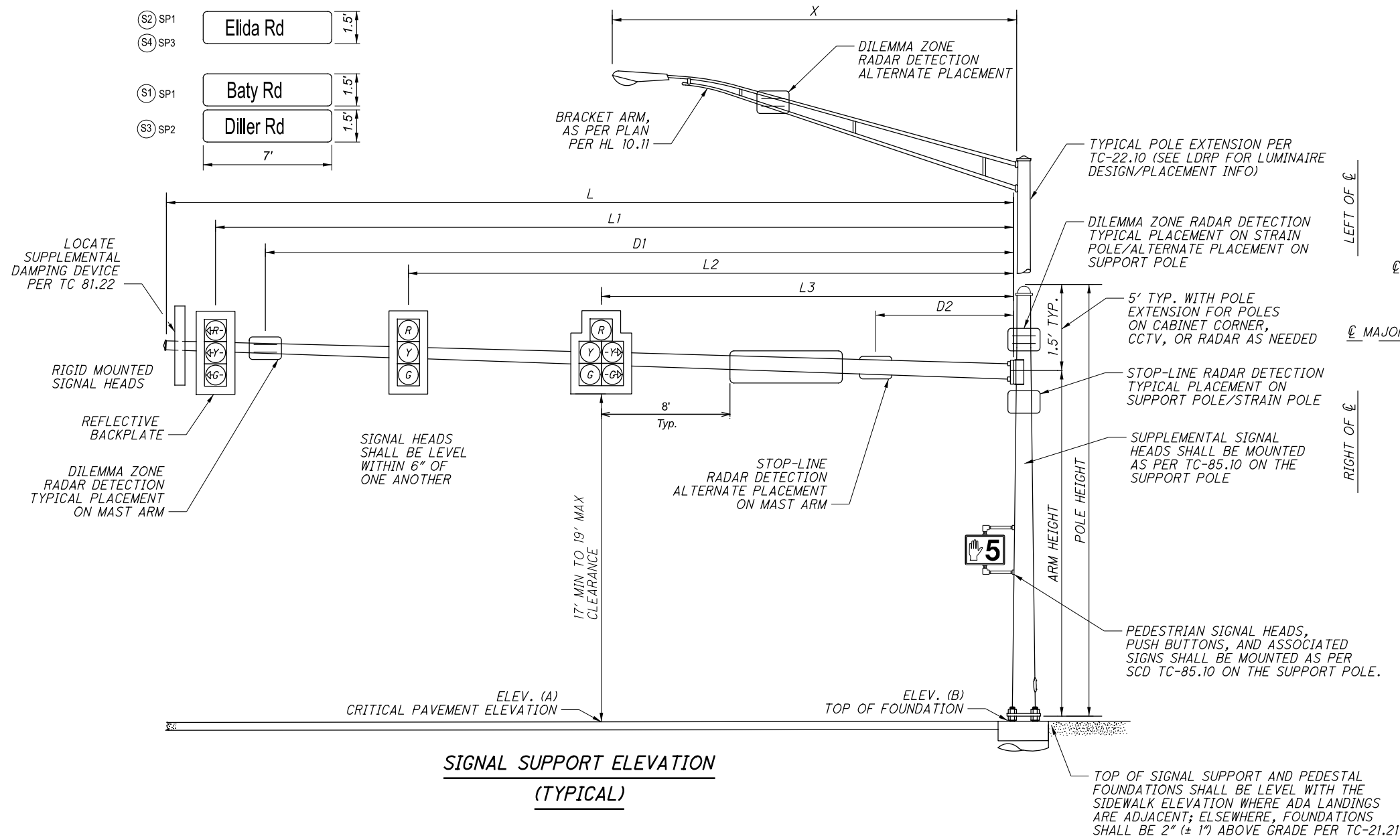
ALL SR 81/117/309 Signals

MODEL: Sheet PAPER: 17x11 (in.) DATE: 9/1/2021 TIME: 12:54:45 PM USER: mfox  
 p:\vhobol-pw-bentley.com\shahid-pw-02\Documents\01 Active Projects\District 01\Allen\107748\00-Contracts\03-Addendum\Addendum\_1\107748\_CS002\_ADD\_1.dgn

REF NO.	SHEET NO.	STATION TO STATION	632	632	632	632	632	632	632	632	632	632	632	632	632	633	633	633	633	809	809	809
			SIGNAL SUPPORT FOUNDATION	PEDESTAL FOUNDATION	POWER CABLE, 3 CONDUCTOR, NO. 10 AWG	SERVICE CABLE, 3 CONDUCTOR, NO. 8 AWG	POWER SERVICE	SIGNAL SUPPORT, TYPE TC-12.31 DESIGN 12 POLE, WITH MAST ARMS TC-81.22 DESIGN 14 AND DESIGN 13, AS PER PLAN	SIGNAL SUPPORT, TYPE TC-81.22, DESIGN 2, AS PER PLAN	SIGNAL SUPPORT, TYPE TC-81.22, DESIGN 12, AS PER PLAN	SIGNAL SUPPORT, TYPE TC-81.22, DESIGN 13, AS PER PLAN	SIGNAL SUPPORT, TYPE TC-81.22, DESIGN 14, AS PER PLAN	COMBINATION SIGNAL SUPPORT, TYPE TC-12.31 DESIGN 12 POLE, WITH MAST ARMS TC-81.22 DESIGN 14 AND DESIGN 13, AS PER PLAN	PEDESTAL, 8', TRANSFORMER BASE, AS PER PLAN	REMOVAL OF TRAFFIC SIGNAL INSTALLATION, AS PER PLAN	CABINET, TYPE 332, AS PER PLAN	CABINET FOUNDATION	CONTROLLER WORK PAD	UNINTERRUPTIBLE POWER SUPPLY (UPS), AS PER PLAN	ADVANCE RADAR DETECTION, AS PER PLAN	STOP LINE RADAR DETECTION, AS PER PLAN	ATC CONTROLLER, AS PER PLAN
			EACH	EACH	FT	FT	EACH	EACH	EACH	EACH	EACH	EACH	EACH	EACH	EACH	EACH	EACH	EACH	EACH	EACH	EACH	EACH
		TO																				
		SR-309 and Baty/Diller Rds.																				
SP1			1		50.5	82	1							1		1				1	2	1
SP2			1								1									1	1	
SP3			1									1									1	
PED1				1											1							
		SR-81 and Roush Rd.																				
SP1			1		47	132	1							1		1				1	1	1
SP2			1								1									1	2	
SP3			1									1								1	1	
		SR-117 and Bowman Rd.																				
SP1			1							1										1	1	
SP2			1								1									1		
SP3			1									1								1	1	
SP4			1		51.5	76	1							1		1				1		1
TOTALS CARRIED TO GENERAL SUMMARY			10	1	149	290	3	1	1	3	2	2	1	1	3	3	3	3	3	8	10	3

Signal Subsummary

DESIGN AGENCY	
DESIGNER	MLF
REVIEWER	LMD 06/11/21
PROJECT ID	107748
SHEET	P.09
TOTAL	22

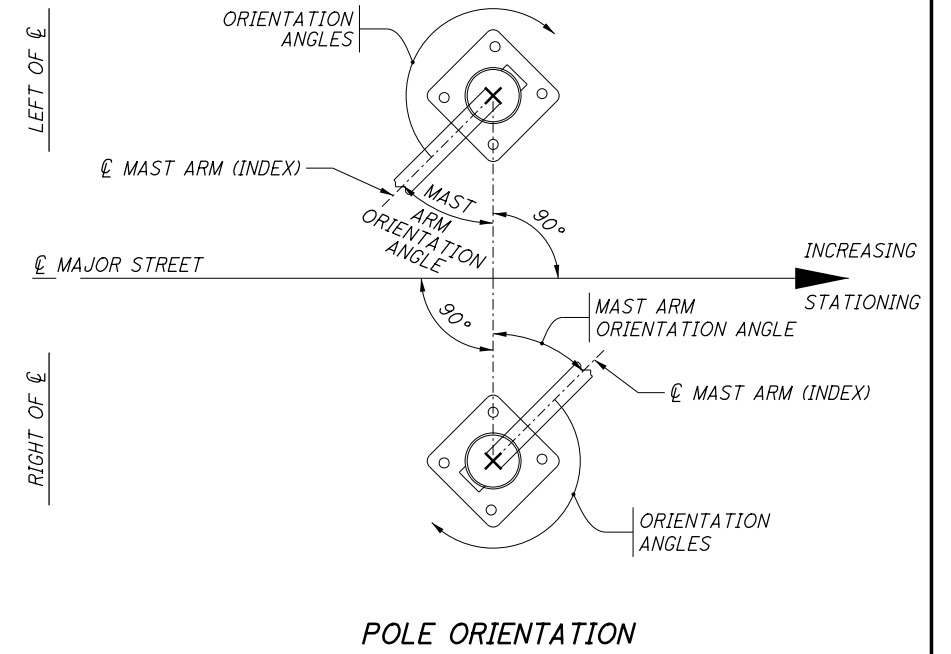
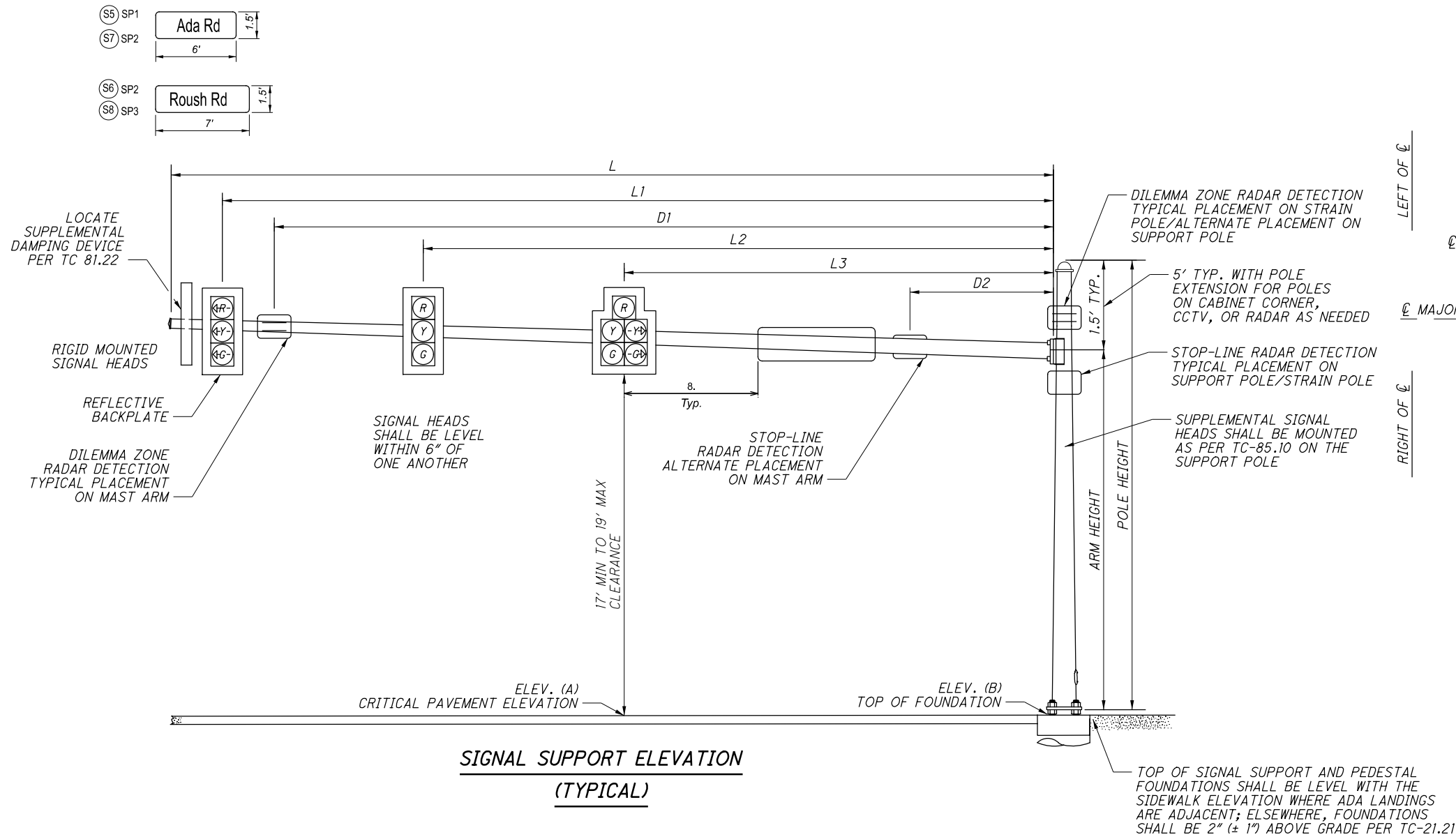


**SIGNAL SUPPORT ELEVATION  
(TYPICAL)**

SUPPORT NO.	STATION	OFFSET	ELEVATION		POLE DETAILS			SIGNAL SUPPORT ARM DETAILS									ORIENTATION ANGLES FROM MAST ARM A												
			A (Pavt. Elev.)	B (Top of Found)	DESIGN TYPE	DESIGN NO.	POLE HEIGHT	Arm	DESIGN TYPE	DESIGN NO.	ARM HEIGHT	L	L1	L2	L3	D1	D2	X	MAST ARM A ANGLE	MAST ARM B ANGLE	PEDESTRIAN SIGNAL	PEDESTRIAN PUSHBUTTON	POWER SERVICE	SIGNAL CABINET	BRACKET ARM	HANDHOLE	CABLE ENTRANCE 12" FROM TOP	CABLE ENTRANCE 12" FROM TOP	LUMINAIR ARM ORIENTATION
			FT	FT	FT	FT	FT																						
SP-1	403+05.50	48.00' Rt.	810.21	810.38	TC-12.31	#12	30.25	A	TC-81.22	14	20.25	57	54	42	-	0	-	30	270	-	270	270	171	220	266.5	180	171	270	265
			810.61					B																					
SP-2	401+91.00	46.50' Lt.	810.23	809.78	TC-81.22	13	22.05		TC-81.22	13	20.55	48.5	45.5	33.5	21.5	40	0	-	0	-	-	-	-	-	-	-	-	-	-
SP-3	402+92.00	44.0' Lt.	809.88	810.1	TC-81.22	12	22.15		TC-81.22	12	20.65	47.5	44.5	32	-	32	-	-	90	-	-	-	-	-	-	-	-	-	

# COMBINATION SIGNAL POLE SP-1 HAS HAD THE 10' POLE EXTENSION FOR LIGHTING LUMINAIRE REDUCED TO 5' TO MITIGATE POTENTIAL UTILITY ENVELOPE SAFETY ENCROACHMENT. (35.25' - 5' = 30.25')





Support No.	Station	Offset	Elevation		Pole Details						Signal Support Arm Details							Orientation Angles From Mast Arm A									
			A (Pavement Elevation)	B (Top of Foundation)	Design Type	Design No.	Pole Height Ft.	Arm	Design Type	Design No.	Arm Height Ft.	L Ft.	L1 Ft.	L2 Ft.	L3 Ft.	D1 Ft.	D2 Ft.	X Ft.	Mast Arm A Angle Deg.	Mast Arm B Angle Deg.	Pedestrian Signal Deg.	Pedestrian Push Button Deg.	Power Service Deg.	Signal Cabinet Deg.	Bracket Arm Deg.	Handhole Deg.	Cable Entrance 12" From Top Deg.
SP1	477+60.50	64	907.12	907.15	TC-81.22	14	24.9	-	-	14	19.9	60.5	56.5	44	0	-	-	90	-	-	-	214.56	221.5	-	180	214.56	
SP2	477+99.00	48	908.1	907.19	TC-12.31	12	22.3	A	TC-81.22	13	20.8	51	48	36	24	38.5	21.5	0	-	-	-	-	-	90	-		
			B					TC-81.22	14	19.6	64	61	49	64	-	-	-	282.2	-	-	-	-	-				
SP3	478+82.50	41	906.5	905.15	TC-81.22	12	23	-	-	12	21.5	45.5	42.5	30.5	18.5	33.5	0	-	344.7	-	-	-	-	164.7	-		