

**ITEM 614, MAINTAINING TRAFFIC**

A MINIMUM OF ONE LANE OF TRAFFIC IN EACH DIRECTION SHALL BE MAINTAINED AT ALL TIMES, EXCEPT FOR A PERIOD NOT TO EXCEED 70 CONSECUTIVE CALENDAR DAYS, WHEN THROUGH TRAFFIC MAY BE DETOURED AS SHOWN ON SHEET 8. TRAFFIC DETOURS SHALL ONLY OCCUR ON OR BETWEEN WEDNESDAY, JUNE 1ST AND TUESDAY, AUGUST 16TH, 2022. ADDITIONALLY, ROAD CLOSURES AT SITES SLM 22.33 AND SLM 23.03 ARE NOT PERMITTED WHILE ALLEN EAST LOCAL SCHOOLS ARE IN SESSION.

A DISINCENTIVE SHALL BE ASSESSED IN THE AMOUNT OF \$18,000 PER DAY FOR EACH CALENDAR DAY A ROADWAY REMAINS CLOSED TO TRAFFIC BEYOND THE SPECIFIED LIMITS ABOVE.

THE DEPARTMENT SHALL FURNISH, ERECT, MAINTAIN, AND SUBSEQUENTLY REMOVE THE DETOUR ROUTING SIGNS AND SUPPORTS ON THE DESIGNATED DETOUR HIGHWAYS (STATE ROUTES) OUTSIDE OF THE PROJECT.

THE CONTRACTOR SHALL FURNISH, ERECT, MAINTAIN AND SUBSEQUENTLY REMOVE THE "LOCAL TRAFFIC ONLY" SIGNS (R11-3A-60) ON THE COUNTY AND TOWNSHIP ROADS AS SHOWN ON SHEET 8, INCLUDING THEIR ASSOCIATED LIGHTS, BARRICADES, AND OTHER TRAFFIC CONTROL DEVICES AS REQUIRED BY THE ODOT. A PAY ITEM FOR DETOUR SIGNING HAS BEEN INCLUDED IN THE GENERAL SUMMARY FOR THE WORK DESCRIBED ABOVE.

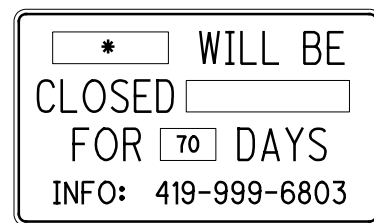
ACCESS TO ADJACENT PROPERTY WITHIN THE WORK LIMITS SHALL BE MAINTAINED BY THE CONTRACTOR AT ALL TIMES AS PER 614.02.A

NOTICE OF CLOSURE SIGNS (W20-H13) SHALL BE ERECTED BY THE CONTRACTOR PRIOR TO THE SCHEDULED ROAD CLOSURE IN ACCORDANCE WITH THE NOTICE OF CLOSURE TIME TABLE BELOW.

THE SIGNS SHALL BE ERECTED ON THE RIGHT-HAND SIDE OF THE ROAD FACING TRAFFIC. THEY SHALL BE PLACED SO AS NOT TO INTERFERE WITH THE VISIBILITY OF ANY OTHER TRAFFIC CONTROL SIGNS. THEY SHOULD BE ERECTED AT OR NEAR THE POINT OF CLOSURE.

NOTICE OF CLOSURE SIGN TIME TABLE		
ITEM	DURATION OF CLOSURE	SIGN DISPLAYED TO PUBLIC
RAMP & ROAD CLOSURES	>= 2 WKS	14 CALENDAR DAYS PRIOR TO CLOSURE
	> 12 HRS & < 2 WKS	7 CALENDAR DAYS PRIOR TO CLOSURE
	< 12 HRS	2 BUSINESS DAYS PRIOR TO CLOSURE

THE SIGN SHALL DISPLAY THE DATE OF THE CLOSURE IN MM-DD FORMAT AND THE NUMBER OF DAYS OF THE CLOSURE. THE LAST LINE OF THE W20-H13 SIGN LISTS A PHONE NUMBER WHICH A MOTORIST MAY CALL FOR ADDITIONAL INFORMATION.



W20-H13

NOTE:  
THE CONTRACTOR IS TO SUPPLY DATE.  
\* SR 309, THAYER RD. OR NAPOLEON RD., AS APPLICABLE

**ITEM 614, MAINTAINING TRAFFIC (CONT.)**

THE CONTRACTOR SHALL PROVIDE, ERECT AND MAINTAIN STANDARD 48 X 30 INCH ROAD CLOSED SIGNS, SIGN SUPPORTS, BARRICADES AND LIGHTS, AS DETAILED IN SCD MT-101.60 AT THE FOLLOWING LOCATIONS DURING PERIODS IN WHICH THE AFFECTED ROADS ARE CLOSED TO TRAFFIC.

WORK LIMITS ALONG S.R. 309 (10 LOCATIONS)

WORK LIMITS ALONG THAYER RD AND NAPOLEON RD (4 LOCATIONS)

ALL WORK AND TRAFFIC CONTROL DEVICES SHALL BE IN ACCORDANCE WITH C&M 614 AND OTHER APPLICABLE PORTIONS OF THE SPECIFICATIONS, AS WELL AS THE OHIO MANUAL OF UNIFORM TRAFFIC CONTROL DEVICES. PAYMENT FOR ALL LABOR, EQUIPMENT AND MATERIALS SHALL BE INCLUDED IN THE LUMP SUM CONTRACT PRICE FOR ITEM 614, MAINTAINING TRAFFIC, UNLESS SEPARATELY ITEMIZED IN THE PLAN.

**ITEM 614, PORTABLE CHANGEABLE MESSAGE SIGNS, AS PER PLAN**

THE CONTRACTOR SHALL FURNISH, INSTALL, MAINTAIN AND REMOVE, WHEN NO LONGER NEEDED, A CHANGEABLE MESSAGE SIGN. THE SIGN SHALL BE OF A TYPE SHOWN ON A LIST OF APPROVED PCMS UNITS AVAILABLE ON THE OFFICE OF MATERIALS MANAGEMENT WEB PAGE. THE LIST CONTAINS CLASS A AND B UNITS WITH MINIMUM LEGIBILITY DISTANCES OF 800 FEET AND 650 FEET, RESPECTIVELY.

EACH SIGN SHALL BE TRAILER-MOUNTED AND EQUIPPED WITH A FUNCTIONAL DIMMING MECHANISM, TO DIM THE SIGN DURING DARKNESS, AND A TAMPER AND VANDAL PROOF ENCLOSURE. EACH SIGN SHALL BE PROVIDED WITH APPROPRIATE TRAINING AND OPERATION INSTRUCTIONS TO ENABLE ON-SITE PERSONNEL TO OPERATE AND TROUBLESHOOT THE UNIT. THE SIGN SHALL ALSO BE CAPABLE OF BEING POWERED BY AN ELECTRICAL SERVICE DROP FROM A LOCAL UTILITY COMPANY. THE PCMS SHALL BE DELINEATED IN ACCORDANCE WITH C&M 614.03.

THE PROBABLE PCMS LOCATIONS AND WORK LIMITS FOR THOSE LOCATIONS SHALL BE AS DIRECTED BY THE ENGINEER. PLACEMENT, OPERATION, MAINTENANCE AND ALL ACTIVATION OF THE SIGNS BY THE CONTRACTOR SHALL BE AS DIRECTED BY THE ENGINEER. THE PCMS SHALL BE LOCATED IN A HIGHLY VISIBLE POSITION YET PROTECTED FROM TRAFFIC. THE CONTRACTOR SHALL, AT THE DIRECTION OF THE ENGINEER, RELOCATE THE PCMS TO IMPROVE VISIBILITY OR ACCOMMODATE CHANGED CONDITIONS. WHEN NOT IN USE, THE PCMS SHALL BE TURNED OFF. ADDITIONALLY, WHEN NOT IN USE FOR EXTENDED PERIODS OF TIME, THE PCMS SHALL BE TURNED AWAY FROM ALL TRAFFIC.

THE ENGINEER SHALL BE PROVIDED ACCESS TO EACH SIGN UNIT AND SHALL BE PROVIDED WITH APPROPRIATE TRAINING AND OPERATION INSTRUCTIONS TO ENABLE ODOT PERSONNEL TO OPERATE AND TROUBLESHOOT THE UNIT, AND TO REVISE SIGN MESSAGES, IF NECESSARY.

THE CONTRACTOR SHALL IMPLEMENT A SYSTEM WHEREBY CHANGEABLE MESSAGES WILL BE IMPLEMENTED WITHIN 2 HOURS FOLLOWING TELEPHONE NOTIFICATION FROM THE PROJECT ENGINEER TO A DESIGNATED PHONE.

**ITEM 614, PORTABLE CHANGEABLE MESSAGE SIGNS, AS PER PLAN (CONT.)**

ALL MESSAGES TO BE DISPLAYED ON THE SIGN WILL BE PROVIDED BY THE ENGINEER. A LIST OF ALL REQUIRED PRE-PROGRAMMED MESSAGES WILL BE GIVEN TO THE CONTRACTOR AT THE PROJECT PRECONSTRUCTION CONFERENCE. THE SIGN SHALL HAVE THE CAPABILITY TO STORE UP TO 99 MESSAGES. MESSAGE MEMORY OR PRE-PROGRAMMED DISPLAYS SHALL NOT BE LOST AS A RESULT OF POWER FAILURES TO THE ON-BOARD COMPUTER. THE SIGN LEGEND SHALL BE CAPABLE OF BEING CHANGED IN THE FIELD. THREE-LINE PRESENTATION FORMATS WITH UP TO SIX MESSAGE PHASES SHALL BE SUPPORTED. PCMS FORMAT SHALL PERMIT THE COMPLETE MESSAGE FOR EACH PHASE TO BE READ AT LEAST TWICE.

THE PCMS SHALL CONTAIN AN ACCURATE CLOCK AND PROGRAMMING LOGIC WHICH WILL ALLOW THE SIGN TO BE ACTIVATED, DEACTIVATED OR MESSAGES CHANGED AUTOMATICALLY AT DIFFERENT TIMES OF THE DAY FOR DIFFERENT DAYS OF THE WEEK.

THE CONTRACTOR SHALL BE RESPONSIBLE FOR 24-HOUR-PER-DAY OPERATION AND MAINTENANCE OF THESE SIGNS ON THE PROJECT FOR THE DURATION OF THE PHASES WHEN THE PLAN REQUIRES THEIR USE.

PAYMENT FOR THE ABOVE DESCRIBED ITEM SHALL BE AT THE CONTRACT UNIT PRICE. PAYMENT SHALL INCLUDE ALL LABOR, MATERIALS, EQUIPMENT, FUELS, LUBRICATING OILS, SOFTWARE, HARDWARE AND INCIDENTALS TO PERFORM THE ABOVE DESCRIBED WORK.

ITEM 614, PORTABLE CHANGEABLE MESSAGE SIGN, AS PER PLAN - 9 SIGN MONTHS ASSUMING 3 PCMS SIGNS FOR 3 MONTHS EACH

**DUST CONTROL**

THE CONTRACTOR SHALL FURNISH AND APPLY WATER FOR DUST CONTROL AS DIRECTED BY THE ENGINEER. THE FOLLOWING ESTIMATED QUANTITIES HAVE BEEN INCLUDED FOR DUST CONTROL PURPOSES:

- SLM 19.31: 788 CY EARTHWORK \* 0.002 M. GAL. = 1.6 M. GAL
- SLM 20.03: 569 CY EARTHWORK \* 0.002 M. GAL. = 1.1 M. GAL
- SLM 23.02: 685 CY EARTHWORK \* 0.002 M. GAL. = 1.4 M. GAL

ITEM 616, WATER 4 M. GAL.

**NOTIFICATION OF TRAFFIC RESTRICTIONS**

THROUGHOUT THE DURATION OF THE PROJECT, THE CONTRACTOR SHALL NOTIFY THE PROJECT ENGINEER IN WRITING OF ALL TRAFFIC RESTRICTIONS AND UPCOMING MAINTENANCE OF TRAFFIC CHANGES. THE CONTRACTOR SHALL ENSURE THE WRITTEN NOTIFICATION IS SUBMITTED IN A TIMELY MANNER TO ALLOW THE PROJECT ENGINEER TO MEET THE REQUIRED TIME FRAMES SET FORTH IN THE TABLE BELOW TO INFORM THE SPECIAL HAULING PERMITS SECTION (HAULING.PERMITS@DOT.OHIO.GOV) AND THE DISTRICT PUBLIC INFORMATION OFFICE (PIO). THIS NOTIFICATION SHALL BE RECEIVED BY THE PROJECT ENGINEER PRIOR TO THE PHYSICAL SETUP OF ANY APPLICABLE SIGNS OR MESSAGE BOARDS.

INFORMATION SHOULD INCLUDE, BUT IS NOT LIMITED TO, ALL CONSTRUCTION ACTIVITIES THAT IMPACT OR INTERFERE WITH TRAFFIC AND SHALL LIST THE SPECIFIC LOCATION, TYPE OF WORK, ROAD STATUS, DATE AND TIME OF RESTRICTION, DURATION OF RESTRICTION, NUMBER OF LANES MAINTAINED, NUMBER OF LANES CLOSED, MINIMUM VERTICAL CLEARANCE, MINIMUM WIDTH OF DRIVABLE PAVEMENT, DETOUR ROUTES, IF APPLICABLE, AND ANY OTHER INFORMATION REQUESTED BY THE PROJECT ENGINEER.

**NOTIFICATION OF TRAFFIC RESTRICTIONS (CONT.)**

NOTIFICATION TIME TABLE		
ITEM	DURATION OF CLOSURE	NOTICE DUE TO PERMITS & PIO
RAMP & ROAD CLOSURES	>= 2 WKS	21 CALENDAR DAYS PRIOR TO CLOSURE
	> 12 HRS & < 2 WKS	14 CALENDAR DAYS PRIOR TO CLOSURE
	< 12 HRS	4 BUSINESS DAYS PRIOR TO CLOSURE
LANE CLOSURES AND RESTRICTIONS	>= 2 WKS	14 CALENDAR DAYS PRIOR TO CLOSURE
	< 2 WKS	5 BUSINESS DAYS PRIOR TO CLOSURE
START OF CONSTRUCTION & TRAFFIC PATTERN CHANGES	N/A	14 CALENDAR DAYS PRIOR TO IMPLEMENTATION

ANY UNFORESEEN CONDITIONS NOT SPECIFIED IN THE PLANS REQUIRING TRAFFIC RESTRICTIONS SHALL ALSO BE REPORTED TO THE PROJECT ENGINEER USING THE NOTIFICATION TIME TABLE.

**DESIGNATED LOCAL DETOUR ROUTE**

IN ADDITION TO THE OFFICIAL, SIGNED DETOUR ROUTES, LOCAL ROUTES HAVE BEEN DETERMINED TO BE THE SECONDARY, UNSIGNED DETOUR ROUTES OR "DESIGNATED LOCAL DETOUR ROUTES." THESE ROUTES ARE SHOWN ON SHEET 8. DURING THE TIME THAT TRAFFIC IS DETOURED, THE CONTRACTOR SHALL MAINTAIN THESE ROUTES IN A CONDITION WHICH IS REASONABLY SMOOTH AND FREE FROM HOLES, RUTS, RIDGES, BUMPS, DUST AND STANDING WATER. ONCE THE DETOURS ARE REMOVED AND TRAFFIC RETURNED TO ITS NORMAL PATTERN, THE DESIGNATED LOCAL DETOUR ROUTES SHALL BE RESTORED TO A CONDITION THAT IS EQUIVALENT TO THAT WHICH EXISTED PRIOR TO ITS USE FOR THIS PURPOSE. ALL SUCH WORK SHALL BE PERFORMED WHEN AND AS DETERMINED BY THE ENGINEER.

THE FOLLOWING ESTIMATED QUANTITIES ARE PROVIDED FOR USE AS DETERMINED BY THE ENGINEER TO MAINTAIN AND SUBSEQUENTLY RESTORE THE DESIGNATED LOCAL DETOUR ROUTES.

- ITEM 253, PAVEMENT REPAIR 40 SQ. YD.
- ITEM 304, AGGREGATE BASE 40 CU. YD.
- ITEM 441, ASPHALT CONCRETE SURFACE COURSE, TYPE 1, (448) PG 64-22 20 CU. YD.
- ITEM 407, TACK COAT 60 GAL.
- ITEM 617, COMPACTED AGGREGATE 80 CU. YD.



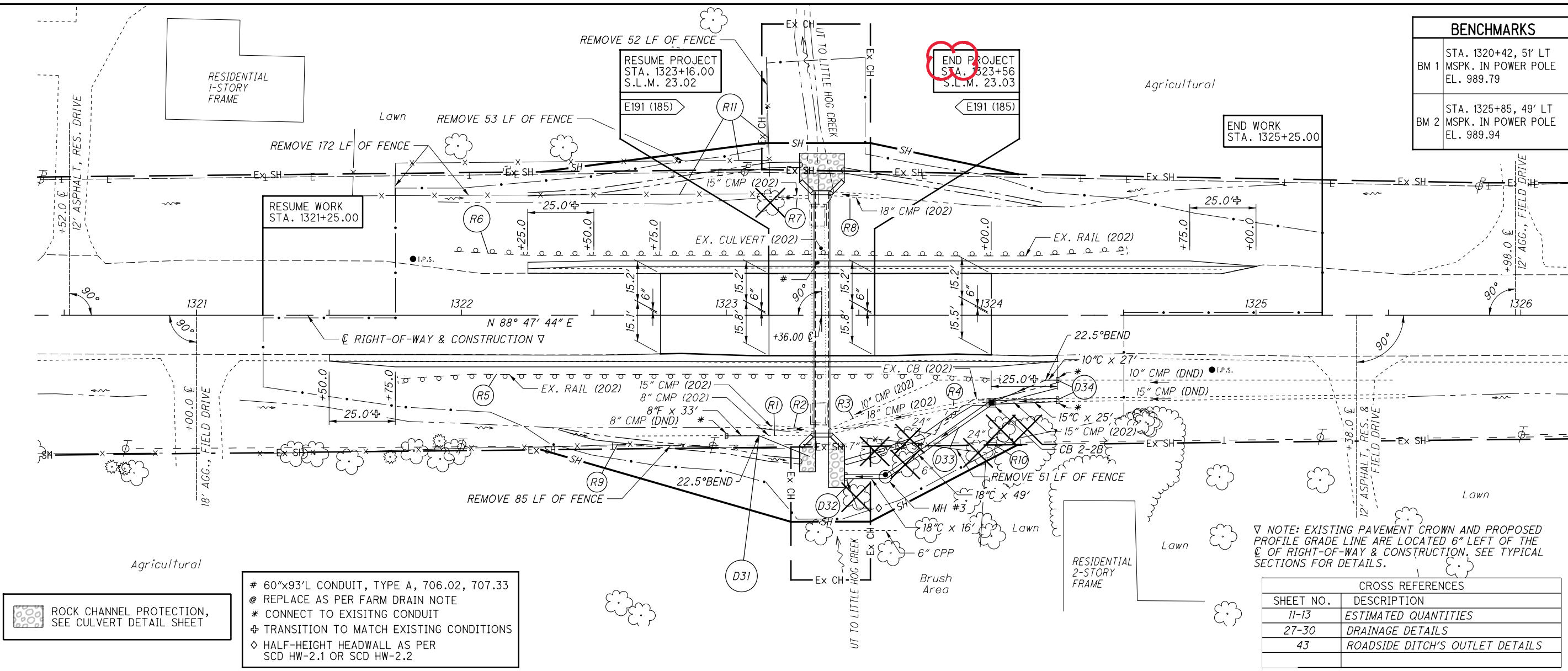
0 20 40  
HORIZONTAL SCALE IN FEET

CALCULATED  
TMH  
CHECKED  
IMK

ALL-309-19.31 / 20.03  
PLAN AND PROFILE - S.R. 309 (SLM 23.02)  
23.02 PART 2  
STA. 1320+50 TO STA. 1326+00

16  
54

BENCHMARKS	
BM 1	STA. 1320+42, 51' LT MSPK. IN POWER POLE EL. 989.79
BM 2	STA. 1325+85, 49' LT MSPK. IN POWER POLE EL. 989.94

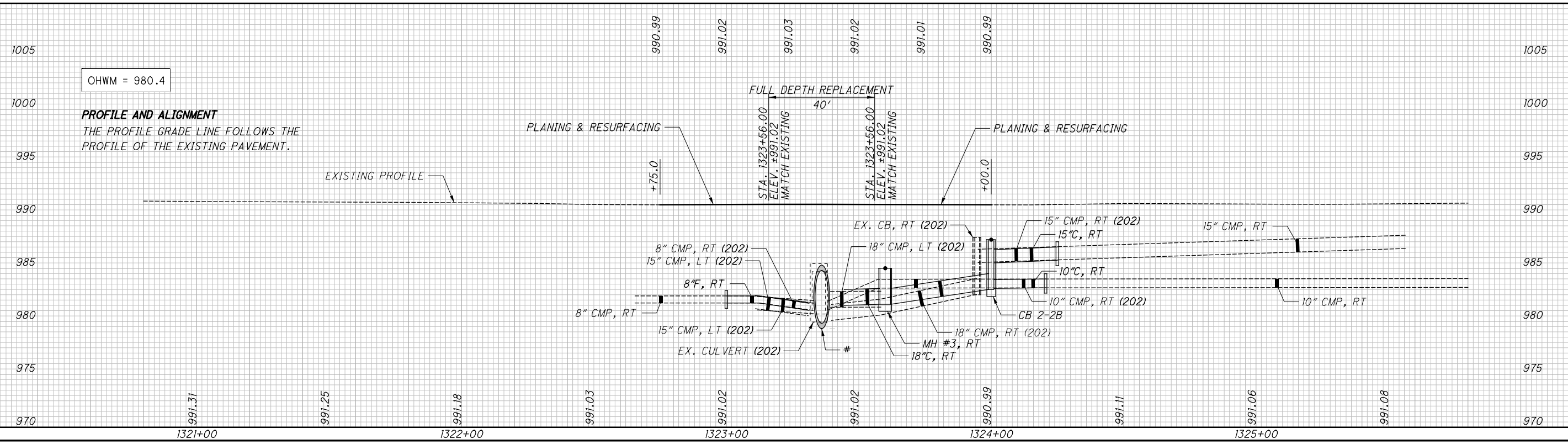


- # 60"x93'L CONDUIT, TYPE A, 706.02, 707.33
- @ REPLACE AS PER FARM DRAIN NOTE
- \* CONNECT TO EXISTING CONDUIT
- ⊕ TRANSITION TO MATCH EXISTING CONDITIONS
- ◇ HALF-HEIGHT HEADWALL AS PER SCD HW-2.1 OR SCD HW-2.2

ROCK CHANNEL PROTECTION, SEE CULVERT DETAIL SHEET

NOTE: EXISTING PAVEMENT CROWN AND PROPOSED PROFILE GRADE LINE ARE LOCATED 6" LEFT OF THE  $\Delta$  OF RIGHT-OF-WAY & CONSTRUCTION, SEE TYPICAL SECTIONS FOR DETAILS.

CROSS REFERENCES	
SHEET NO.	DESCRIPTION
11-13	ESTIMATED QUANTITIES
27-30	DRAINAGE DETAILS
43	ROADSIDE DITCH'S OUTLET DETAILS



**PROFILE AND ALIGNMENT**  
THE PROFILE GRADE LINE FOLLOWS THE PROFILE OF THE EXISTING PAVEMENT.

OHWM = 980.4

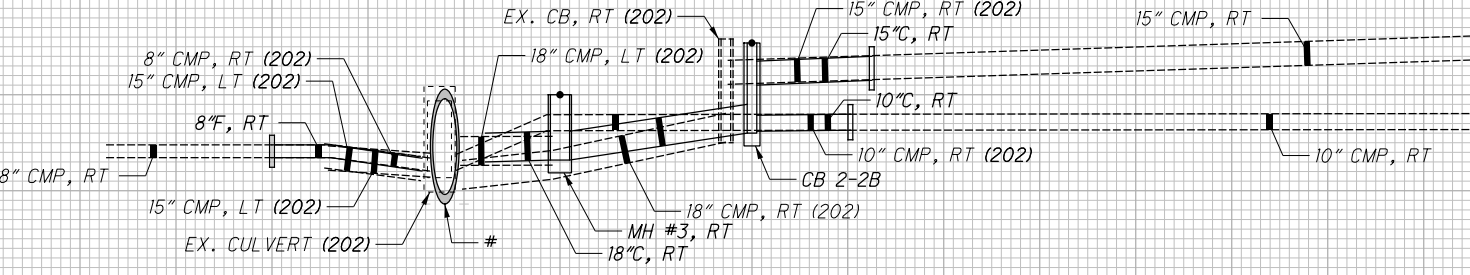
FULL DEPTH REPLACEMENT  
40'

PLANING & RESURFACING  
+75.0

PLANING & RESURFACING  
+00.0

STA. 1323+56.00  
ELEV. +991.02  
MATCH EXISTING

STA. 1324+56.00  
ELEV. +991.02  
MATCH EXISTING



I:\Project\data\05570\Design\Roadway\Sheets\05570\_GP30.dgn Sheet 1/18/2022 4:20:48 PM rmcadams