

STATE OF OHIO  
ALLEN COUNTY ENGINEER

ALL - CR 152 SHAWNEE ROAD  
ALLEN COUNTY  
CITY OF LIMA

PROJECT DESCRIPTION

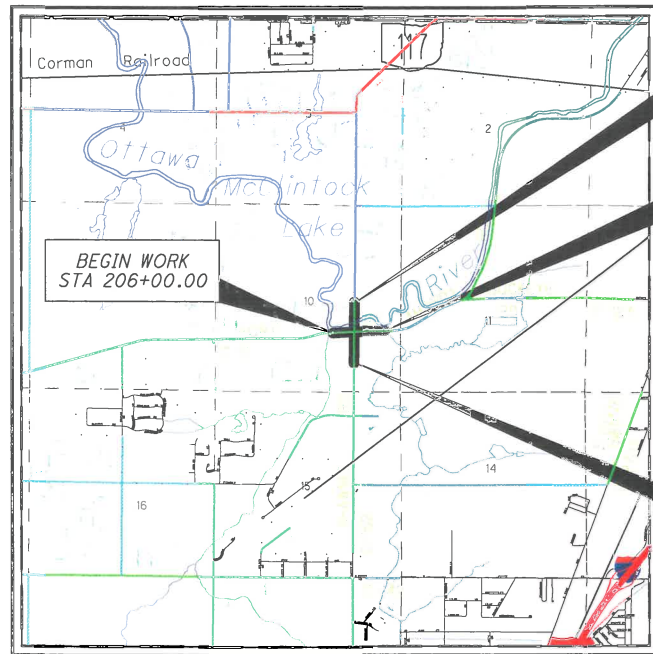
TRAFFIC IMPROVEMENTS OF A 0.35 MILE PORTION OF SHAWNEE ROAD AND FORT AMANDA ROAD AT THE ROUNDABOUT AT THE INTERSECTION OF SHAWNEE ROAD AND FORT AMANDA ROAD.

PROJECT EARTH DISTURBED AREA: 0.01 ACRES  
ESTIMATED CONTRACTOR EARTH DISTURBED AREA: 0 ACRES  
NOTICE OF INTENT EARTH DISTURBED AREA: 0.01 ACRES

2019 SPECIFICATIONS

THE STANDARD SPECIFICATIONS OF THE STATE OF OHIO, DEPARTMENT OF TRANSPORTATION, INCLUDING SUPPLEMENTAL SPECIFICATIONS LISTED IN THE PLANS AND CHANGES LISTED IN THE PROPOSAL SHALL GOVERN THIS IMPROVEMENT.

I HEREBY APPROVE THESE PLANS AND DECLARE THAT THE MAKING OF THIS IMPROVEMENT WILL NOT REQUIRE THE CLOSING TO TRAFFIC OF THE HIGHWAY AND THAT PROVISIONS FOR THE MAINTENANCE AND SAFETY OF TRAFFIC WILL BE AS SET FORTH ON THE PLANS AND ESTIMATES.



LOCATION MAP

LATITUDE: 40°42'21" N LONGITUDE: 84°09'05" W

SCALE IN MILES



PORTION TO BE IMPROVED	_____
INTERSTATE HIGHWAY	_____
FEDERAL ROUTES	_____
STATE ROUTES	_____
COUNTY & TOWNSHIP ROADS	_____
OTHER ROADS	_____

DESIGN DESIGNATION	SHAWNEE RD NORTH OF FORT AMANDA RD	SHAWNEE RD SOUTH OF FORT AMANDA RD	FORT AMANDA RD EAST OF SHAWNEE RD	FORT AMANDA RD WEST OF SHAWNEE RD
CURRENT ADT (2011)	13590	14100	9560	8830
DESIGN YEAR ADT (2031)	16150	16870	10100	9160
DESIGN HOURLY VOLUME (2031)	1610	1690	1000	900
DIRECTIONAL DISTRIBUTION	51%	50%	52%	54%
TRUCKS (24 HOUR B&C)	1%	2%	1%	1%
DESIGN SPEED	45 MPH	45 MPH	45 MPH	45 MPH
LEGAL SPEED	45 MPH	45 MPH	45 MPH	45 MPH
DESIGN FUNCTIONAL CLASSIFICATION:	URBAN MINOR ARTERIAL	URBAN MINOR ARTERIAL	URBAN MINOR ARTERIAL	URBAN COLLECTOR
NHS PROJECT	NO			

DESIGN EXCEPTIONS

NONE

INDEX OF SHEETS:

TITLE SHEET	1
GENERAL NOTES	2 - 6
MAINTENANCE OF TRAFFIC NOTES	7
GENERAL SUMMARY	8 - 9
SUBSUMMARIES	10 - 13
SIGNING AND PAVEMENT MARKING PLAN	14 - 21

STANDARD CONSTRUCTION DRAWINGS				SUPPLEMENTAL SPECIFICATIONS	
				ALLEN COUNTY SCD'S	
	MT-95.50	7-21-17		SS 800 7-17-20	
	MT-95.60	4-19-19		SS 807 7-17-20	
	TC-16.22	7-17-20	MT-97.12	4-19-19	SS 821 4-20-12
	TC-21.21	4-17-20	MT-99.20	4-19-19	SS 832 10-19-18
	TC-41.10	7-19-13			SS 850 7-17-20
	TC-41.20	10-18-13			SS 916 10-16-20
	TC-41.41	7-19-19			SS 921 4-20-12
	TC-42.20	10-18-13			
	TC-52.10	10-18-13			
	TC-52.20	7-20-18			
	TC-65.11	7-21-17			
	TC-71.10	1-19-18			

APPROVED *Chad S. Rundle*  
DATE 03/17/21 ALLEN COUNTY ENGINEER

APPROVED *Christopher A. Hughes*  
DATE 03/21/2021 DISTRICT DEPUTY DIRECTOR

APPROVED \_\_\_\_\_  
DATE \_\_\_\_\_ DIRECTOR, DEPARTMENT OF TRANSPORTATION

ENGINEERS SEAL:  
  
SIGNED: *Chad Rundle*  
DATE: 3/16/21



X:\Projects\GFL\2020\2021\100400-Allen County Eng-S\ALL\2021100400-Engineering\Roadway\Sheets\77305GT001.dwg Mar-21 9:42 AM

FEDERAL PROJECT NO. E(210)041  
PID NO. 114150  
CONSTRUCTION PROJECT NO.  
RAILROAD INVOLVEMENT NONE  
ALL-SHAWNEE RD  
1/21

X:\Projects\GFL\2020\2021\100400 Allen County Eng-S\ALL\2021100400\400-Engineering\Roadway\Sheets\77305GN002.dwg Mar-21 3:45 PM

ITEM 690 - SPECIAL, MISC.: ASPHALT PENETRATING SEALER

THE OHIO DEPARTMENT OF TRANSPORTATION (ODOT) HAS INVESTIGATED THE BENEFITS OF USING VARIOUS ASPHALT SEALERS. THE THREE PRODUCTS TO BE EVALUATED ARE:

RECLAMITE PAVEMENT TECHNOLOGY, INC.  
24144 DETROIT ROAD  
WESTLAKE, OHIO 44145  
DAVE HELM  
1-800-333-6309  
CELL: 937-239-2756

BIO-RE-STAR  
ASPHALT SYSTEMS, INC.  
2150 WEST MICHIGAN STREET  
P.O. BOX 232  
SIDNEY, OHIO 45365  
MIKE FREISTHLER  
1-800-729-8094  
CELL: 937-726-0831

STAR SEAL  
1150 MILEPOST DRIVE  
COLUMBUS, OH 43228  
1-800-759-1912  
OFFICE: 614-870-0744  
CELL: 614-439-1587

THE ASPHALT CONCRETE PAVING CONTRACTOR SHALL COORDINATE WITH THE ASPHALT SEALER REPRESENTATIVES ON THE APPLICATION OF THESE THREE PRODUCTS.

THE CONTRACTOR SHALL PROVIDE ONSITE TRAFFIC CONTROL FOR THE APPLICATION AND TESTING OF THE PRODUCTS TO BE APPLIED. ALL LABOR AND MATERIALS NECESSARY TO PROVIDE TRAFFIC CONTROL SHALL BE INCLUDED IN ITEM 614 - MAINTAINING TRAFFIC.

APPLICATION OF COVER AGGREGATE

COVER AGGREGATE SHALL ONLY BE USED AS DIRECTED BY THE ENGINEER IN THE EVENT THE ASPHALT SEALER DOES NOT CURE IN A REASONABLE AMOUNT OF TIME (PER THE MANUFACTURER'S RECOMMENDATION), IF ADEQUATE PENETRATION DOES NOT OCCUR LEAVING EXCESS MATERIAL ON THE SURFACE OF THE PAVEMENT OR IF APPLICATION IS REQUIRED TO FACILITATE THE OPENING OF LANES TO TRAFFIC. IF SAND IS APPLIED, ANY ADDITIONAL COSTS FOR CLEANUP INCLUDING BROOMING OR SWEEPING OF EXCESS AGGREGATE OFF THE PAVEMENT WILL BE INCIDENTAL TO THIS ITEM OF WORK.

METHOD OF MEASUREMENT

THE DEPARTMENT WILL MEASURE ASPHALT PENETRATING SEALER BY THE NUMBER OF GALLONS OF UNDILUTED MATERIAL APPLIED.

APPLICATION OF ASPHALT PENETRATING SEALERS

APPLICATION RATE SHALL BE AS PER MANUFACTURER'S RECOMMENDATIONS FOR THIS PROJECT. THE FOLLOWING APPLICATION RATES OF UNDILUTED MATERIAL ARE FOR CALCULATING ESTIMATED QUANTITIES.

BIO-RE-STAR APPLICATION RATE 0.02 GALLON/SQUARE YARD  
RECLAMITE APPLICATION RATE 0.035 GALLON/SQUARE YARD  
STAR SEAL APPLICATION RATE 0.04 GALLON/SQUARE YARD

BASIS OF PAYMENT

THE COST OF COVER AGGREGATE AND ANY WATER TO DILUTE THE ASPHALT SEALER MATERIAL IS INCIDENTAL TO ITEM SPECIAL: ASPHALT PENETRATING SEALER.

THE DEPARTMENT WILL PAY FOR ACCEPTED QUANTITIES AT THE CONTRACT PRICES AS FOLLOWS:

ITEM 690, 98900 - SPECIAL, MISC.: ASPHALT PENETRATING SEALER, QUANTITY = 516 GALLONS

CALCULATED  
CCW  
CHECKED  
CSR

GENERAL NOTES - RESEARCH DATA

ALL - SHAWNEE RD

X:\Projects\GFL\2020\2021\100400\Allen County Eng-S\ALL\2021\100400\400-Engineering\Roadway\Sheets\77305CG001.dwg Mar-21 4:19 PM

SHEET NUM.										PART.		ALT	ITEM	ITEM	GRAND	UNIT	DESCRIPTION	SEE SHEET NO.
6	10	11	12	13						01/SAE/O T	02/NFP/ OT	(X)	EXT	TOTAL				
PAVEMENT ALTERNATES																		
516											516	X	SPECIAL	69098900	516	GAL	SPECIAL, MISC.: ASPHALT PENETRATING SEALER (RECLAMITE) (ALTERNATE 1)	6
516											516	X	SPECIAL	69098900	516	GAL	SPECIAL, MISC.: ASPHALT PENETRATING SEALER (BIO-RE-STAR) (ALTERNATE 2)	6
516											516	X	SPECIAL	69098900	516	GAL	SPECIAL, MISC.: ASPHALT PENETRATING SEALER (STAR SEAL) (ALTERNATE 3)	6
TRAFFIC CONTROL																		
		12									12		621	00101	12	EACH	RPM, AS PER PLAN	2
			3								3		625	32000	3	EACH	GROUND ROD	
			54								54		630	03100	54	FT	GROUND MOUNTED SUPPORT, NO. 3 POST	
			88								88		630	07600	88	FT	GROUND MOUNTED STRUCTURAL BEAM SUPPORT, W10X12	
			4								4		630	09000	4	EACH	BREAKAWAY STRUCTURAL BEAM CONNECTION	
			1								1		630	72520	1	EACH	OVERHEAD SIGN SUPPORT, TYPE TC-16.22, DESIGN 7	
			2								2		630	72540	2	EACH	OVERHEAD SIGN SUPPORT, TYPE TC-16.22, DESIGN 12	19
			100								100		630	80100	100	SF	SIGN, FLAT SHEET	
			182								182		630	80200	182	SF	SIGN, GROUND MOUNTED EXTRUSHEET	
			4								4		630	84500	4	EACH	GROUND MOUNTED STRUCTURAL BEAM SUPPORT FOUNDATION	
			3								3		630	84510	3	EACH	RIGID OVERHEAD SIGN SUPPORT FOUNDATION	
			3								3		630	80510	3	EACH	SIGN, STREET NAME	
			15								15		630	84900	15	EACH	REMOVAL OF GROUND MOUNTED SIGN AND DISPOSAL	
			4								4		630	85100	4	EACH	REMOVAL OF GROUND MOUNTED SIGN AND REERECTION	
			12								12		630	86002	12	EACH	REMOVAL OF GROUND MOUNTED POST SUPPORT AND DISPOSAL	
			8								8		630	86011	8	EACH	REMOVAL OF GROUND MOUNTED POST SUPPORT AND REERECTION, AS PER PLAN	2
	16		44								60		646	10400	60	FT	STOP LINE	
	218	120	201								539		646	10500	539	FT	CROSSWALK LINE	
			119								119		646	10600	119	FT	TRANSVERSE/DIAGONAL LINE, WHITE	
	214		294								508		646	10600	508	FT	TRANSVERSE/DIAGONAL LINE, YELLOW	
	127										127		646	10800	127	SF	ISLAND MARKING	
	14	6	7								27		646	20300	27	EACH	LANE ARROW	
	106	88									194		646	20800	194	FT	YIELD LINE	
		6									6		646	20400	6	EACH	WORD ON PAVEMENT, 72"	
TRAFFIC CONTROL ALTERNATES																		
	0.07	0.02	0.04								0.13	X	807	12010	0.13	MILE	WET REFLECTIVE EPOXY PAVEMENT MARKING, EDGE LINE, 6", WHITE (ALTERNATE 1)	
	0.24	0.12	0.08								0.44	X	807	12010	0.44	MILE	WET REFLECTIVE EPOXY PAVEMENT MARKING, EDGE LINE, 6", YELLOW (ALTERNATE 1)	
	0.06	0.04	0.01								0.11	X	807	12110	0.11	MILE	WET REFLECTIVE EPOXY PAVEMENT MARKING, LANE LINE, 6", SOLID (ALTERNATE 1)	
	0.18		0.44								0.62	X	807	12200	0.62	MILE	WET REFLECTIVE EPOXY PAVEMENT MARKING, CENTER LINE (ALTERNATE 1)	
	0.2										0.2	X	807	12200	0.2	MILE	WET REFLECTIVE EPOXY PAVEMENT MARKING, CENTER LINE, 2-WAY LEFT TURN (ALTERNATE 1)	
	254	694	237								1,185	X	807	12410	1,185	FT	WET REFLECTIVE EPOXY PAVEMENT MARKING, DOTTED LINE, 6" (ALTERNATE 1)	
	115		293								408	X	807	12300	408	FT	WET REFLECTIVE EPOXY PAVEMENT MARKING, CHANNELIZING LINE, 8" (ALTERNATE 1)	
	0.75	0.18	0.57								1.5	X	850	10010	1.5	MILE	GROOVING FOR 6" RECESSED PAVEMENT MARKING, (ASPHALT) (ALTERNATE 1)	
	254	694	237								1,185	X	850	10110	1,185	FT	GROOVING FOR 6" RECESSED PAVEMENT MARKING, (ASPHALT) (ALTERNATE 1)	
	115		293								408	X	850	10120	408	FT	GROOVING FOR 8" RECESSED PAVEMENT MARKING, (ASPHALT) (ALTERNATE 1)	
	0.07	0.02	0.04								0.13	X	646	10010	0.13	MILE	EDGE LINE, 6", WHITE (ALTERNATE 2)	
	0.24	0.12	0.08								0.44	X	646	10010	0.44	MILE	EDGE LINE, 6", YELLOW (ALTERNATE 2)	
	0.06	0.04	0.01								0.11	X	646	10110	0.11	MILE	LANE LINE, 6", SOLID (ALTERNATE 2)	
	0.18		0.44								0.62	X	646	10200	0.62	MILE	CENTER LINE (ALTERNATE 2)	
	0.2										0.2	X	646	10200	0.2	MILE	CENTER LINE, 2-WAY LEFT TURN (ALTERNATE 2)	
	254	694	237								1,185	X	646	20504	1,185	FT	DOTTED LINE, 6" (ALTERNATE 2)	
	115		293								408	X	646	10300	408	FT	CHANNELIZING LINE, 8" (ALTERNATE 2)	

CALCULATED	CCW	CHECKED	CSR
GENERAL SUMMARY			
ALL-SHAWNEE RD			
8			
21			

X:\Projects\GFL\2020\2021\100400\2021\100400\400-Engineering\Traffic\Sheets\77305TS001.dwg 25-Mar-21 3:35 PM

REF NO.	SHEET NO.	LOCATION	STATION TO STATION		SIDE	621	807	807	807	807	807	807	646	646	646	646	646	646	807	646	850	850	850	
						RPM, AS PER PLAN EACH	WET REFLECTIVE EPOXY PAVEMENT MARKING, EDGE LINE, 6", WHITE MILE	WET REFLECTIVE EPOXY PAVEMENT MARKING, EDGE LINE, 6", YELLOW MILE	WET REFLECTIVE EPOXY PAVEMENT MARKING, LANE LINE, 6", SOLID MILE	WET REFLECTIVE EPOXY PAVEMENT MARKING, CENTERLINE MILE	WET REFLECTIVE EPOXY PAVEMENT MARKING, CENTERLINE, 2-WAY LEFT TURN MILE	WET REFLECTIVE EPOXY PAVEMENT MARKING, CHANNELIZING LINE, 8" FT	STOP LINE FT	CROSSWALK LINE FT	TRANSVERSE/DIAGONAL LINE, WHITE FT	TRANSVERSE/DIAGONAL LINE, YELLOW FT	ISLAND MARKING SF	LANE ARROW EACH	YIELD LINE FT	WET REFLECTIVE EPOXY PAVEMENT MARKING, DOTTED LINE, 6" FT	WORD ON PAVEMENT, 72" EACH	GROOVING FOR 6" RECESSED PAVEMENT, (ASPHALT) MILE	GROOVING FOR 6" RECESSED PAVEMENT, (ASPHALT) FT	GROOVING FOR 8" RECESSED PAVEMENT, (ASPHALT) FT
CL-1	14	SHAWNEE ROAD	102+40	104+37	CL					0.08										0.08				
TLY-1			102+40	104+37	CL										100									
LA-1			104+70		CL																			
LA-2			106+90		CL																			
CL-2			104+37	109+64	RT					0.1											0.1			
CL-3			104+37	109+64	LT					0.1											0.1			
LA-3			109+10		CL																			
IM-1			109+59	109+68	CL																			
XW-1			109+76	110+21	RT																			
SL-1			109+98	110+14	RT								16											
CH-1			110+32	111+47	LT																			
ELY-1			110+65	112+00	RT																0.03			
ELY-2			110+65	112+00	LT					0.03											0.03			
LA-5			110+70		LT																			
LA-6			111+35		LT																			
DL-1			112+24	113+21	LT																			
DL-1A			111+43	112+39	LT																			
ELY-1	15	SHAWNEE ROAD	112+00	113+68	RT																0.04			
ELY-2			112+00	113+68	LT					0.04											0.04			
LA-7			112+80		RT																			
LA-8			112+80		RT																			
LL-1			112+78	113+76	RT																			
XW-2			113+21	113+32	RT																			
XW-3			113+21	113+30	LT																			
YL-1			113+68	113+92	LT																			
ELY-3			113+85	114+75	CL																			
ELW-2			114+12	114+59	RT																			
LA-9			114+20		RT																			
LA-10			114+20		RT																			
LA-11			114+30		LT																			
LA-12			114+30		LT																			
YL-2			114+78	115+01	RT																			
LL-4			114+95	115+78	LT																			
ELY-4			115+00	115+63	RT																			
ELY-5			115+00	115+63	LT																			
CL-4			115+63	118+27	CL																			
TLY-2			115+63	117+00	CL																			
ELW-3			115+56	119+04	LT																			
LL-2			113+30	113+62	LT																			
DL-4			113+62	114+41	LT																			
LL-3			114+22	114+45	LT																			
TOTALS CARRIED TO GENERAL SUMMARY						0.00	0.07	0.24	0.06	0.18	0.20	115.00	16.00	218.00	0.00	214.00	127.00	14.00	106.00	254.00	0.00	0.75	254.00	115.00

PAVEMENT MARKING SUBSUMMARY

ALL-SHAWNEE RD

CALCULATED  
 CCW  
 CHECKED  
 CSR

X:\Projects\GFL\2020\2021\100400\100400\Allen County Eng-S\ALL\2021\100400\400-Engineering\Traffic\Sheets\7305TS001.dwg 25-Mar-21 3:35 PM

REF NO.	SHEET NO.	LOCATION	STATION TO STATION		SIDE	621	807	807	807	807	807	807	646	646	646	646	646	646	807	646	850	850	850	
						RPM, AS PER PLAN	WET REFLECTIVE EPOXY PAVEMENT MARKING, EDGE LINE, 6", WHITE	WET REFLECTIVE EPOXY PAVEMENT MARKING, EDGE LINE, 6", YELLOW	WET REFLECTIVE EPOXY PAVEMENT MARKING, LANE LINE, 6", SOLID	WET REFLECTIVE EPOXY PAVEMENT MARKING, CENTERLINE	WET REFLECTIVE EPOXY PAVEMENT MARKING, CENTERLINE, 2-WAY LEFT TURN	WET REFLECTIVE EPOXY PAVEMENT MARKING, CHANNELIZING LINE, 8"	STOP LINE	CROSSWALK LINE	TRANSVERSE/DIAGONAL LINE, WHITE	TRANSVERSE/DIAGONAL LINE, YELLOW	ISLAND MARKING	LANE ARROW	YIELD LINE	WET REFLECTIVE EPOXY PAVEMENT MARKING, DOTTED LINE, 6"	WORD ON PAVEMENT, 72"	GROOVING FOR 6" RECESSED PAVEMENT, (ASPHALT)	GROOVING FOR 6" RECESSED PAVEMENT, (ASPHALT)	GROOVING FOR 8" RECESSED PAVEMENT, (ASPHALT)
						EACH	MILE	MILE	MILE	MILE	MILE	FT	FT	FT	FT	SF	EACH	FT	FT	EACH	MILE	FT	FT	
LA-14	15	SHAWNEE ROAD	115+70		LT																			
LA-15			115+70		LT																			
RPM-1			113+33	113+68	RT	3																		
RPM-2			115+03	115+63	LT	3																		
DL-2			114+05	115+00	RT																			
DL-2A			116+17	118+57	RT																			
DL-2B			117+78	118+47	RT																			
DL-5			114+45	114+88	RT																			
LL-1A			115+00	116+17	RT				0.02															
WD-1			113+62		LT																			
WD-2			113+67		LT																			
WD-3			115+02		LT																			
WD-4			115+09		LT																			
ELY-10	15	FORT AMANDA ROAD	210+00	211+45	LT				0.03															
ELY-11			210+00	211+45	RT				0.03															
XW-10			210+90		RT								50											
XW-11			210+90		LT								70											
YL-10			211+45	211+54	RT																			
ELW-10			211+80	212+27	RT				0.01															
ELW-11			212+13	212+40	LT				0.01															
LA-20			212+25		LT																			
LA-21			212+25		LT																			
YL-11			212+68	212+84	LT																			
LL-11			212+78	213+58	LT				0.02															
ELY-12			212+83	214+00	RT				0.03															
ELY-13			212+84	214+00	LT				0.03															
LA-22			213+50		LT																			
LA-23			213+50		LT																			
RPM-10			210+96	211+44	RT	3																		
RPM-11			212+84	213+58	LT	3																		
DL-3			209+74	210+86	LT																			
WD-6			212+87		LT																			
WD-7			212+92		LT																			
TOTALS CARRIED TO GENERAL SUMMARY						12.00	0.02	0.12	0.04	0.00	0.00	0.00	0.00	120.00	0.00	0.00	0.00	6.00	88.00	694.00	6.00	0.18	694.00	0.00

PAVEMENT MARKING SUBSUMMARY

ALL-SHAWNEE RD

CALCULATED  
 CCW  
 CHECKED  
 CSR

X:\Projects\GFL\2020\2021\100400\100400\Allen County Eng-S\ALL\2021\100400\400-Engineering\Traffic\Sheets\77305TS001.dwg 25-Mar-21 3:35 PM

REF NO.	SHEET NO.	LOCATION	STATION TO STATION	SIDE	621	807	807	807	807	807	807	646	646	646	646	646	646	646	807	646	850	850	850	
					RPM, AS PER PLAN	WET REFLECTIVE EPOXY PAVEMENT MARKING, EDGE LINE, 6", WHITE	WET REFLECTIVE EPOXY PAVEMENT MARKING, EDGE LINE, 6", YELLOW	WET REFLECTIVE EPOXY PAVEMENT MARKING, LANE LINE, 6", SOLID	WET REFLECTIVE EPOXY PAVEMENT MARKING, CENTERLINE	WET REFLECTIVE EPOXY PAVEMENT MARKING, CENTERLINE, 2-WAY LEFT TURN	WET REFLECTIVE EPOXY PAVEMENT MARKING, CHANNELIZING LINE, 8"	STOP LINE	CROSSWALK LINE	TRANSVERSE/DIAGONAL LINE, WHITE	TRANSVERSE/DIAGONAL LINE, YELLOW	ISLAND MARKING	LANE ARROW	YIELD LINE	WET REFLECTIVE EPOXY PAVEMENT MARKING, DOTTED LINE, 6"	WORD ON PAVEMENT, 72"	GROOVING FOR 6" RECESSED PAVEMENT, (ASPHALT)	GROOVING FOR 6" RECESSED PAVEMENT, (ASPHALT)	GROOVING FOR 8" RECESSED PAVEMENT, (ASPHALT)	
					EACH	MILE	MILE	MILE	MILE	MILE	FT	FT	FT	FT	FT	SF	EACH	FT	FT	EACH	MILE	FT	FT	
ELW-3	16	SHAWNEE ROAD	117+00	119+03	LT		0.04														0.04			
TLW-1			117+00	119+03	LT									119										
TLY-2			117+00	118+27	CL									92										
CL-5			118+27	120+57	LT				0.05												0.05			
CH-2			118+47	120+57	RT						211											211		
LA-15			118+85		CL																			
LA-16			119+75		CL																			
LA-17			120+50		CL																			
XW-4			120+77	121+20	LT																			
SL-2			120+84	120+98	LT							14	75											
CL-6			121+32	123+52	CL				0.09												0.09			
TLY-3			121+32	123+52	CL									59										
DL-6			117+87	118+47	RT													60				60		
CL-10	17	FORT AMANDA ROAD	206+00	209+68	CL				0.14												0.14			
TLY-10			206+00	209+68	CL									57										
ELY-10			209+68	210+00	LT																0.01			
ELY-11			209+68	210+00	RT																0.01			
ELY-12	18	FORT AMANDA ROAD	214+00	215+55	RT																0.03			
ELY-13			214+00	215+55	LT																0.03			
XW-12			215+80	216+52	RT																			
SL-10			216+11	216+40	RT							30	126											
CL-11			216+32	220+25	CL				0.15												0.15			
TLY-11			217+33	220+25	CL									86										
CH-10			216+32	217+13	LT						82											82		
LA-24			216+40		CL																			
LA-25			217+05		CL																			
DLW-10			217+13	217+83	LT														177			177		
CL-12	18	BLUE JACKET COURT	34+48	34+72	CL				0.01	0.01											0.01			
LL-12			34+48	34+72	RT																0.01			
LA-26			34+65		RT																	1		
LA-27			34+65		RT																	1		
TOTALS CARRIED TO GENERAL SUMMARY						0.00	0.04	0.08	0.01	0.44	0.00	293.00	44.00	201.00	119.00	294.00	0.00	7.00	0.00	237.00	0.00	0.57	237.00	293.00

PAVEMENT MARKING SUBSUMMARY

ALL-SHAWNEE RD




CALCULATED  
 CCW  
 CHECKED  
 CSR

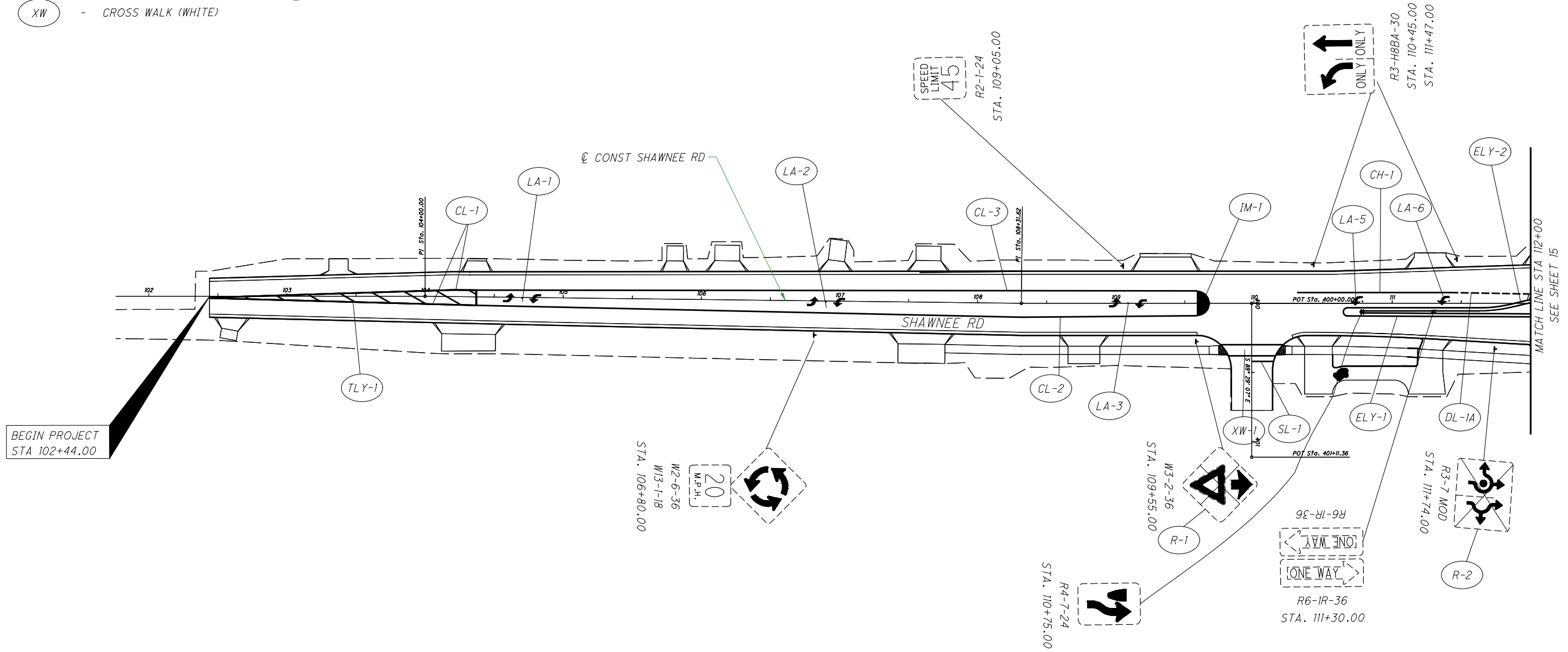
x:\Projects\GFL\2020\2021\100400 Allen County Eng-S\ALL\2021\100400\400-Engineering\Traffic\Sheets\77305TP001.dwg Mar-21 3:36 PM

PAVEMENT MARKING LEGEND

- |                                |   |
|--------------------------------|---|
| ELW - EDGE LINE (WHITE), 6"    | LL - LANE LINE (WHITE), SOLID, 6"                         |
| ELY - EDGE LINE (YELLOW), 6"   | CH - CHANNELIZING LINE (WHITE), 8"                        |
| CL - CENTER LINE (YELLOW)      | YL - YIELD LINE (WHITE)<br>(18" WIDE X 2' LONG X 2' SKIP) |
| SL - STOP LINE (WHITE)         | RPM - RAISED PAVEMENT MARKER (YELLOW)                     |
| TLY - TRANSVERSE LINE (YELLOW) | WD - WORD ON PAVEMENT (WHITE), 72"                        |
| TLW - TRANSVERSE LINE (WHITE)  | DL - DOTTED LINE (WHITE), 6"                              |
| LA - LANE ARROW (WHITE)        | IM - ISLAND MARKING (YELLOW)                              |
| XW - CROSS WALK (WHITE)        |   |

SIGN LEGEND

- |   |   |
|---|---|
|  EXISTING SIGN TO REMAIN                   |  EXISTING SIGN TO BE REMOVED |
|  EXISTING SIGN TO BE REMOVED AND REERECTED |   |



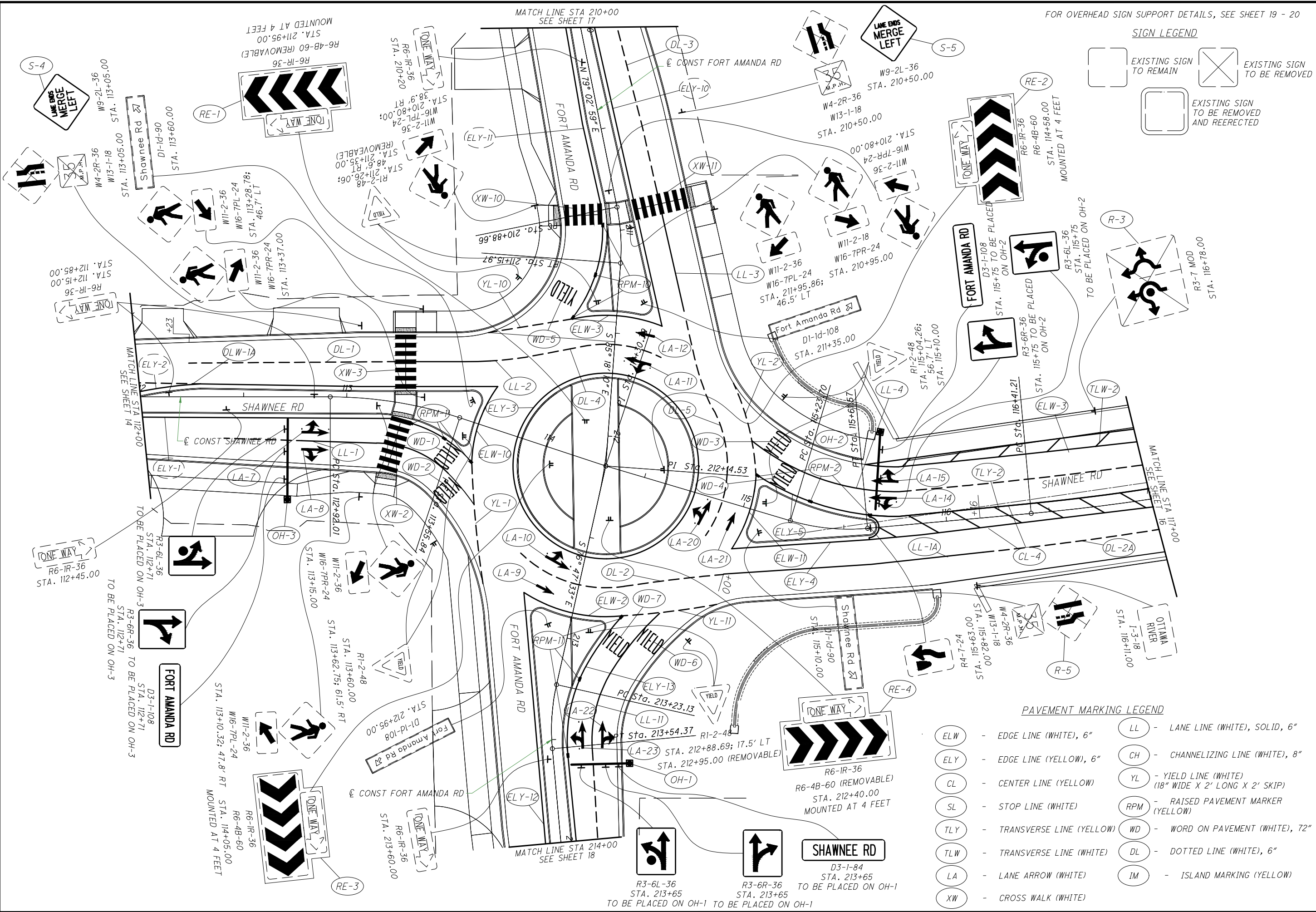
CALCULATED  
CCW  
CHECKED  
CSR

0 20 40 80  
HORIZONTAL  
SCALE IN FEET

SIGNING AND PAVEMENT MARKING PLAN  
SHAWNEE ROAD

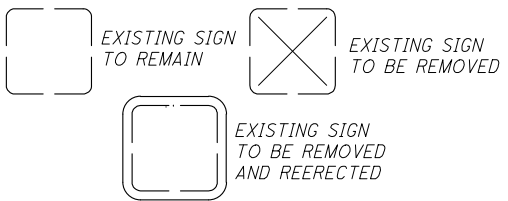
ALL - SHAWNEE RD





FOR OVERHEAD SIGN SUPPORT DETAILS, SEE SHEET 19 - 20

**SIGN LEGEND**



**PAVEMENT MARKING LEGEND**

- |                                |   |
|--------------------------------|---|
| ELW - EDGE LINE (WHITE), 6"    | LL - LANE LINE (WHITE), SOLID, 6"                         |
| ELY - EDGE LINE (YELLOW), 6"   | CH - CHANNELIZING LINE (WHITE), 8"                        |
| CL - CENTER LINE (YELLOW)      | YL - YIELD LINE (WHITE)<br>(18" WIDE X 2' LONG X 2' SKIP) |
| SL - STOP LINE (WHITE)         | RPM - RAISED PAVEMENT MARKER (YELLOW)                     |
| TLY - TRANSVERSE LINE (YELLOW) | WD - WORD ON PAVEMENT (WHITE), 72"                        |
| TLW - TRANSVERSE LINE (WHITE)  | DL - DOTTED LINE (WHITE), 6"                              |
| LA - LANE ARROW (WHITE)        | IM - ISLAND MARKING (YELLOW)                              |
| XW - CROSS WALK (WHITE)        |   |

**SIGNING AND PAVEMENT MARKING PLAN**  
**SHAWNEE ROAD AND FORT AMANDA ROAD**

**ALL-SHAWNEE RD**

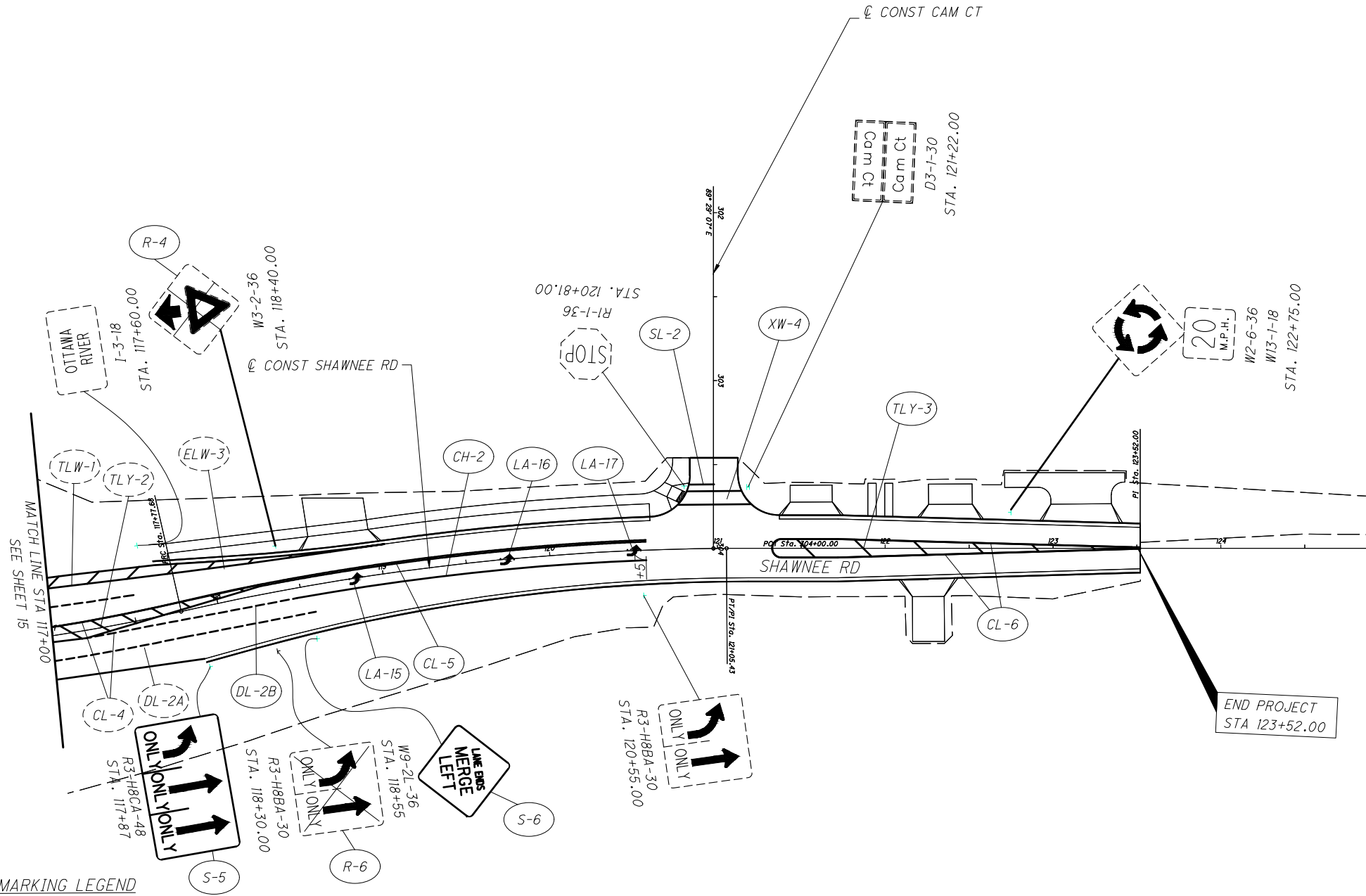
CALCULATED  
CCW

CHECKED  
CSR

0 20 40  
HORIZONTAL SCALE IN FEET

15  
21





PAVEMENT MARKING LEGEND

- |                                  |   |
|----------------------------------|---|
| (ELW) - EDGE LINE (WHITE), 6"    | (LL) - LANE LINE (WHITE), SOLID, 6"                         |
| (ELY) - EDGE LINE (YELLOW), 6"   | (CH) - CHANNELIZING LINE (WHITE), 8"                        |
| (CL) - CENTER LINE (YELLOW)      | (YL) - YIELD LINE (WHITE)<br>(18" WIDE X 2' LONG X 2' SKIP) |
| (SL) - STOP LINE (WHITE)         | (RPM) - RAISED PAVEMENT MARKER (YELLOW)                     |
| (TLY) - TRANSVERSE LINE (YELLOW) | (WD) - WORD ON PAVEMENT (WHITE), 72"                        |
| (TLW) - TRANSVERSE LINE (WHITE)  | (DL) - DOTTED LINE (WHITE), 6"                              |
| (LA) - LANE ARROW (WHITE)        | (IM) - ISLAND MARKING (YELLOW)                              |
| (XW) - CROSS WALK (WHITE)        |   |

SIGN LEGEND

- |   |  |
|---|--|
| [Dashed Box] EXISTING SIGN TO REMAIN                              | [Box with X] EXISTING SIGN TO BE REMOVED |
| [Dashed Box with Arrow] EXISTING SIGN TO BE REMOVED AND REERECTED |  |

CALCULATED  
CCW  
CHECKED  
CSR

0 20 40 80  
HORIZONTAL SCALE IN FEET

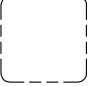


SIGNING AND PAVEMENT MARKING PLAN  
SHAWNEE ROAD

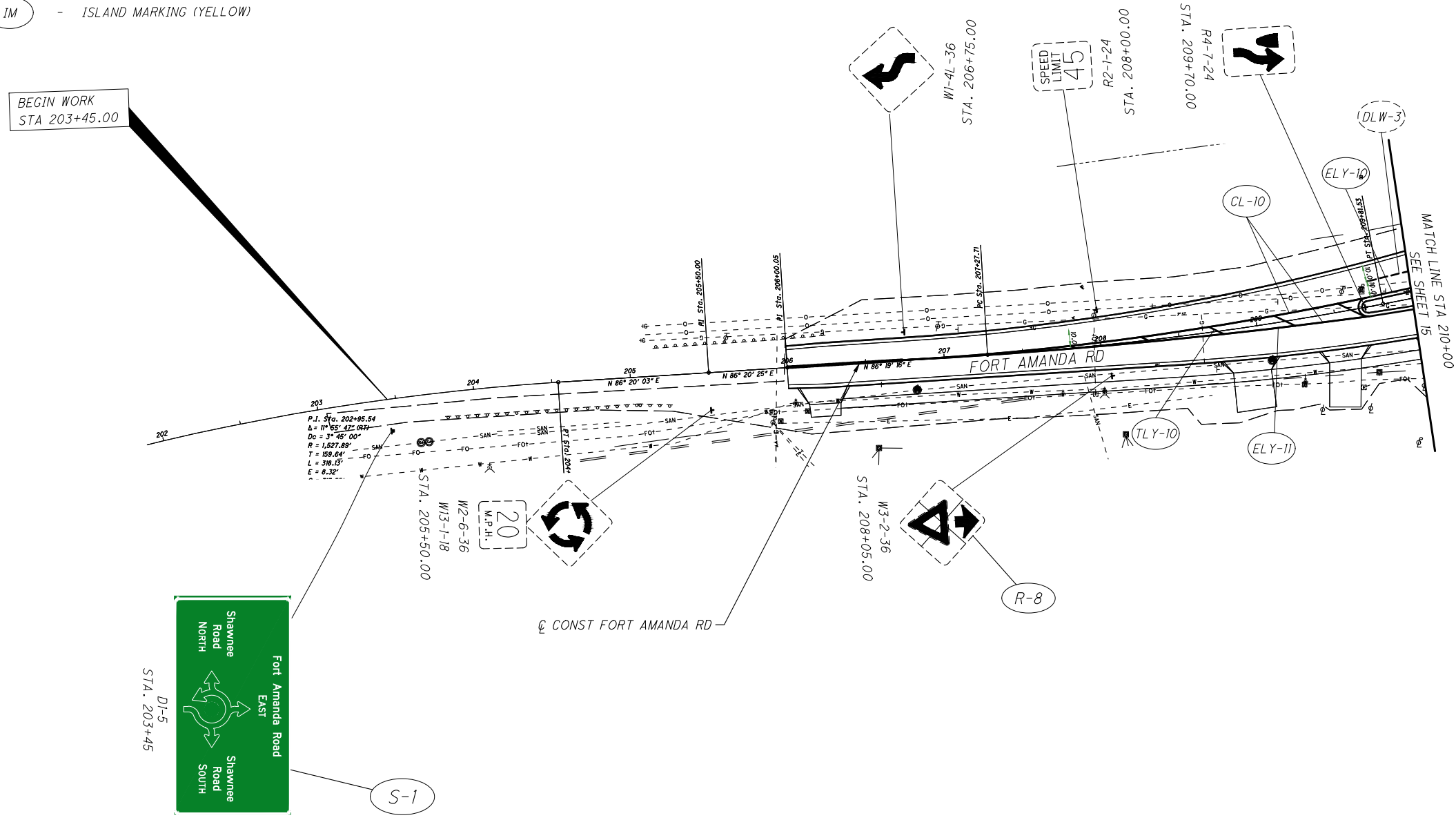
x:\Projects\GFL\2020\2021\100400 Allen County Eng-S\ALL\2021100400\400-Engineering\Traffic\Sheets\77305TP004.dwg Mar-21 3:38 PM

PAVEMENT MARKING LEGEND

- |                                  |   |
|----------------------------------|---|
| (ELW) - EDGE LINE (WHITE), 6"    | (LL) - LANE LINE (WHITE), SOLID, 6"                         |
| (ELY) - EDGE LINE (YELLOW), 6"   | (CH) - CHANNELIZING LINE (WHITE), 8"                        |
| (CL) - CENTER LINE (YELLOW)      | (YL) - YIELD LINE (WHITE)<br>(18" WIDE X 2' LONG X 2' SKIP) |
| (SL) - STOP LINE (WHITE)         | (RPM) - RAISED PAVEMENT MARKER (YELLOW)                     |
| (TLY) - TRANSVERSE LINE (YELLOW) | (WD) - WORD ON PAVEMENT (WHITE), 72"                        |
| (TLW) - TRANSVERSE LINE (WHITE)  | (DL) - DOTTED LINE (WHITE), 6"                              |
| (LA) - LANE ARROW (WHITE)        | (IM) - ISLAND MARKING (YELLOW)                              |
| (XW) - CROSS WALK (WHITE)        |   |

SIGN LEGEND

- |   |   |
|---|---|
|  EXISTING SIGN TO REMAIN                   |  EXISTING SIGN TO BE REMOVED |
|  EXISTING SIGN TO BE REMOVED AND REERECTED |   |

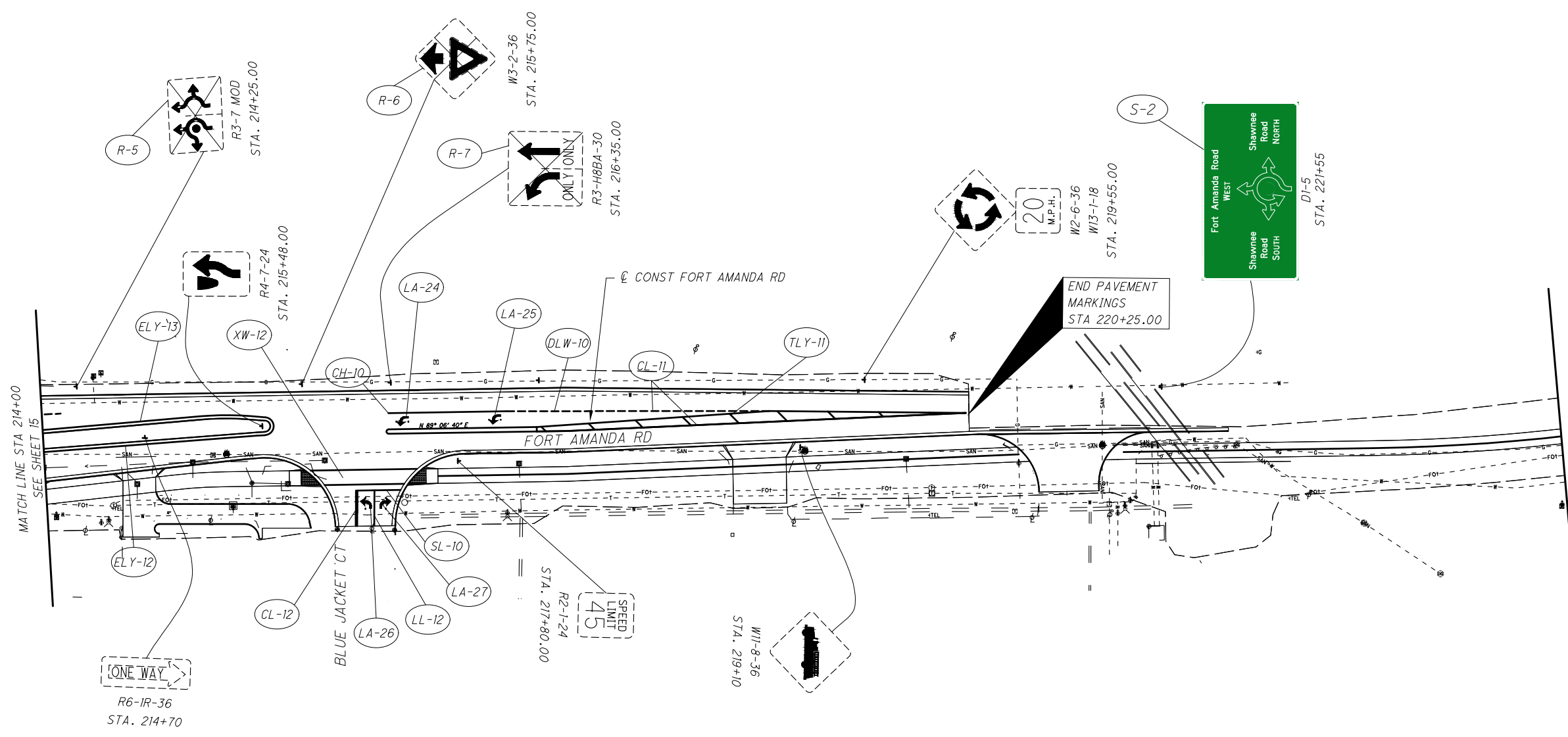


CALCULATED  
CCW  
CHECKED  
CSR

0 20 40 80  
HORIZONTAL  
SCALE IN FEET

SIGNING AND PAVEMENT MARKING PLAN  
FORT AMANDA ROAD

ALL-SHAWNEE RD



PAVEMENT MARKING LEGEND

- |                                  |   |
|----------------------------------|---|
| (ELW) - EDGE LINE (WHITE), 6"    | (LL) - LANE LINE (WHITE), SOLID, 6"                         |
| (ELY) - EDGE LINE (YELLOW), 6"   | (CH) - CHANNELIZING LINE (WHITE), 8"                        |
| (CL) - CENTER LINE (YELLOW)      | (YL) - YIELD LINE (WHITE)<br>(18" WIDE X 2' LONG X 2' SKIP) |
| (SL) - STOP LINE (WHITE)         | (RPM) - RAISED PAVEMENT MARKER (YELLOW)                     |
| (TLY) - TRANSVERSE LINE (YELLOW) | (WD) - WORD ON PAVEMENT (WHITE), 72"                        |
| (TLW) - TRANSVERSE LINE (WHITE)  | (DL) - DOTTED LINE (WHITE), 6"                              |
| (LA) - LANE ARROW (WHITE)        | (IM) - ISLAND MARKING (YELLOW)                              |
| (XW) - CROSS WALK (WHITE)        |   |

SIGN LEGEND

- |   |                             |
|---|-----------------------------|
| EXISTING SIGN TO REMAIN                   | EXISTING SIGN TO BE REMOVED |
| EXISTING SIGN TO BE REMOVED AND REERECTED |                             |

  HORIZONTAL SCALE IN FEET
CALCULATED: CCW CHECKED: CSR
<b>SIGNING AND PAVEMENT MARKING PLAN</b> <b>FORT AMANDA ROAD</b>
<b>ALL-SHAWNEE RD</b>
18 21

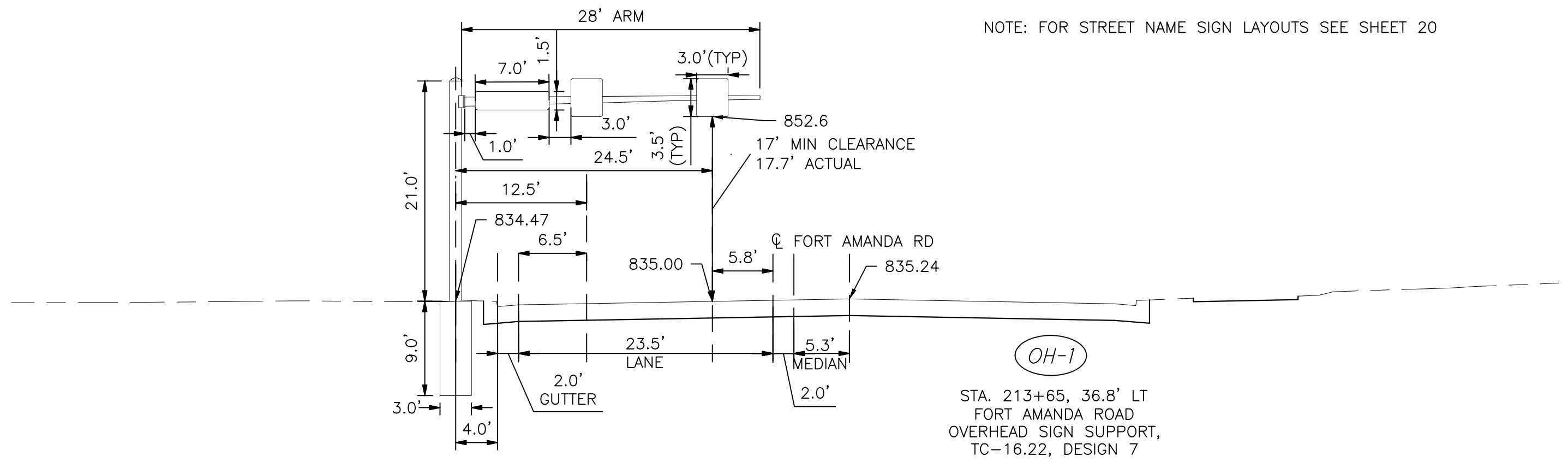
X:\Projects\GFL\2020\2021\100400\_Allen County Eng-S\ALL\2021100400\400-Engineering\Traffic\Sheets\77305TD001.dwg 25-Mar-21 4:25 PM

CALCULATED  
 CCW  
 CHECKED  
 CRP

OVERHEAD SIGN DETAILS

ALL-SHAWNEE RD

NOTE: FOR STREET NAME SIGN LAYOUTS SEE SHEET 20

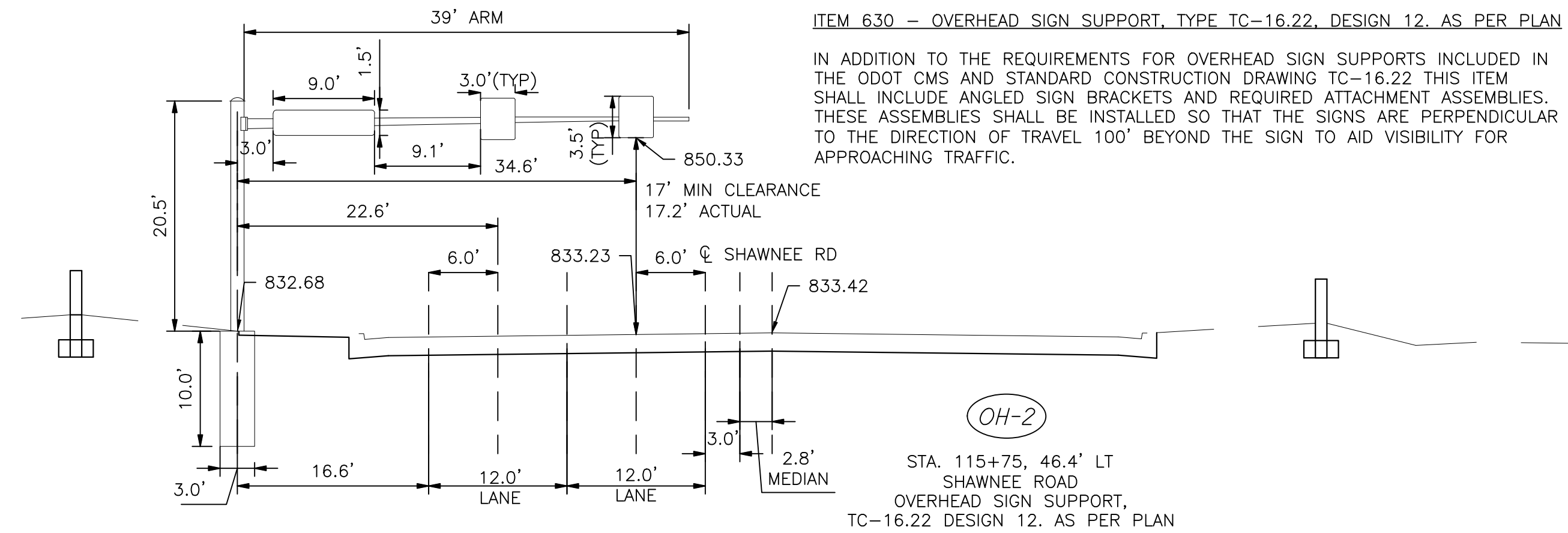


OH-1

STA. 213+65, 36.8' LT  
 FORT AMANDA ROAD  
 OVERHEAD SIGN SUPPORT,  
 TC-16.22, DESIGN 7

ITEM 630 - OVERHEAD SIGN SUPPORT, TYPE TC-16.22, DESIGN 12. AS PER PLAN

IN ADDITION TO THE REQUIREMENTS FOR OVERHEAD SIGN SUPPORTS INCLUDED IN  
 THE ODOT CMS AND STANDARD CONSTRUCTION DRAWING TC-16.22 THIS ITEM  
 SHALL INCLUDE ANGLED SIGN BRACKETS AND REQUIRED ATTACHMENT ASSEMBLIES.  
 THESE ASSEMBLIES SHALL BE INSTALLED SO THAT THE SIGNS ARE PERPENDICULAR  
 TO THE DIRECTION OF TRAVEL 100' BEYOND THE SIGN TO AID VISIBILITY FOR  
 APPROACHING TRAFFIC.

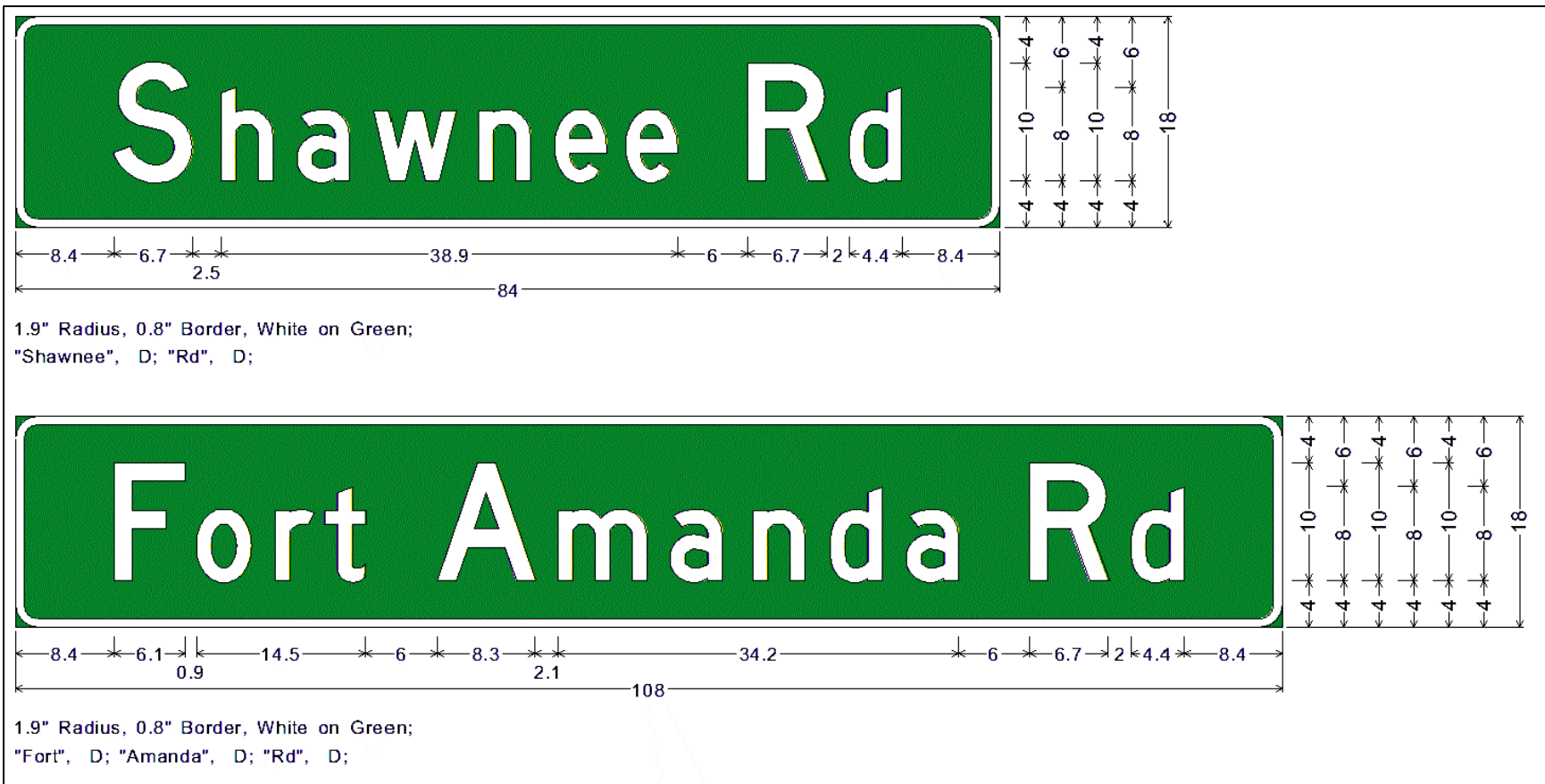
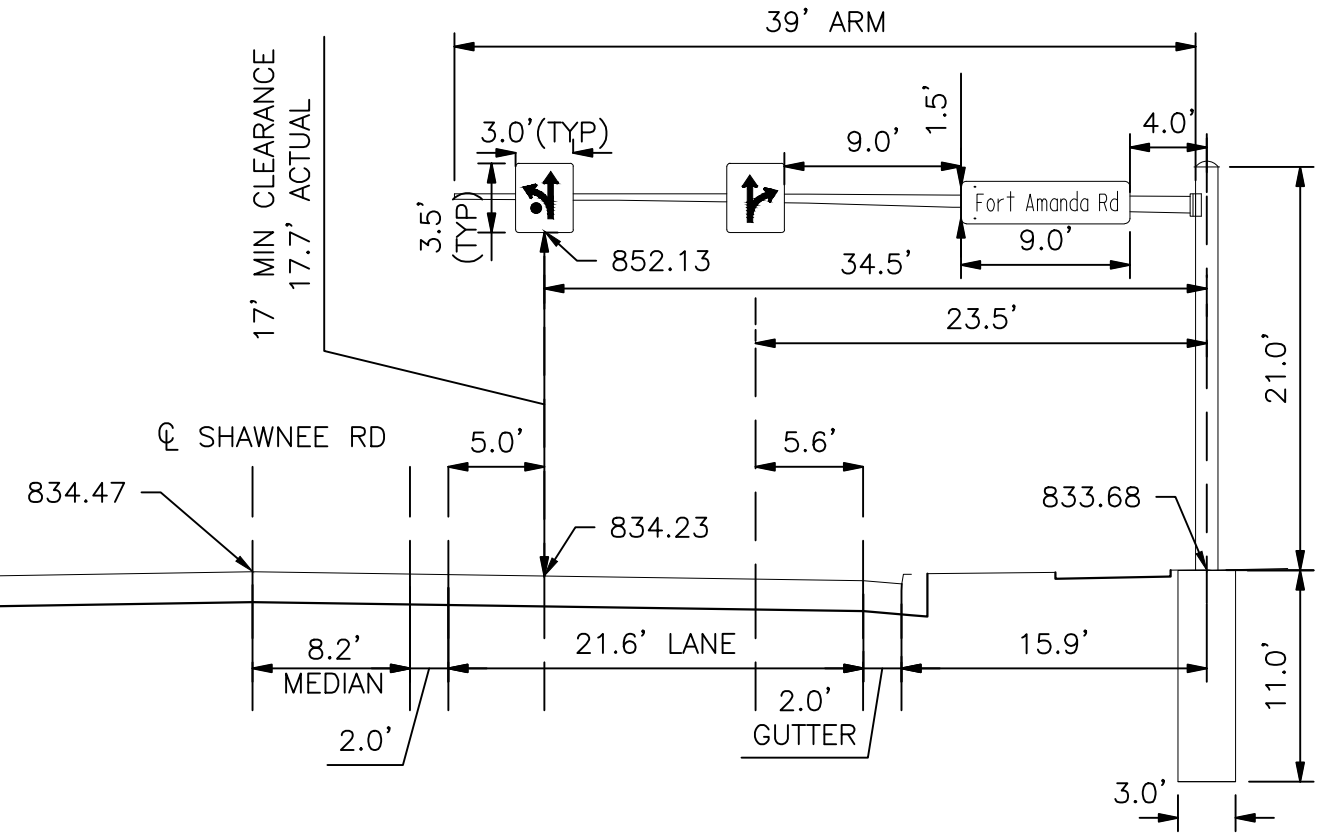


OH-2

STA. 115+75, 46.4' LT  
 SHAWNEE ROAD  
 OVERHEAD SIGN SUPPORT,  
 TC-16.22 DESIGN 12. AS PER PLAN

x:\Projects\GFL\2020\2021\100400 Allen County Eng-S\ALL\2021100400\400-Engineering\Traffic\Sheets\77305TD001.dwg 25-Mar-21 4:28 PM

OH-3  
STA. 112+71, 49.7' RT  
SHAWNEE RD  
OVERHEAD SIGN SUPPORT,  
TC-16.22 DESIGN 12



STREET NAME SIGN LAYOUT

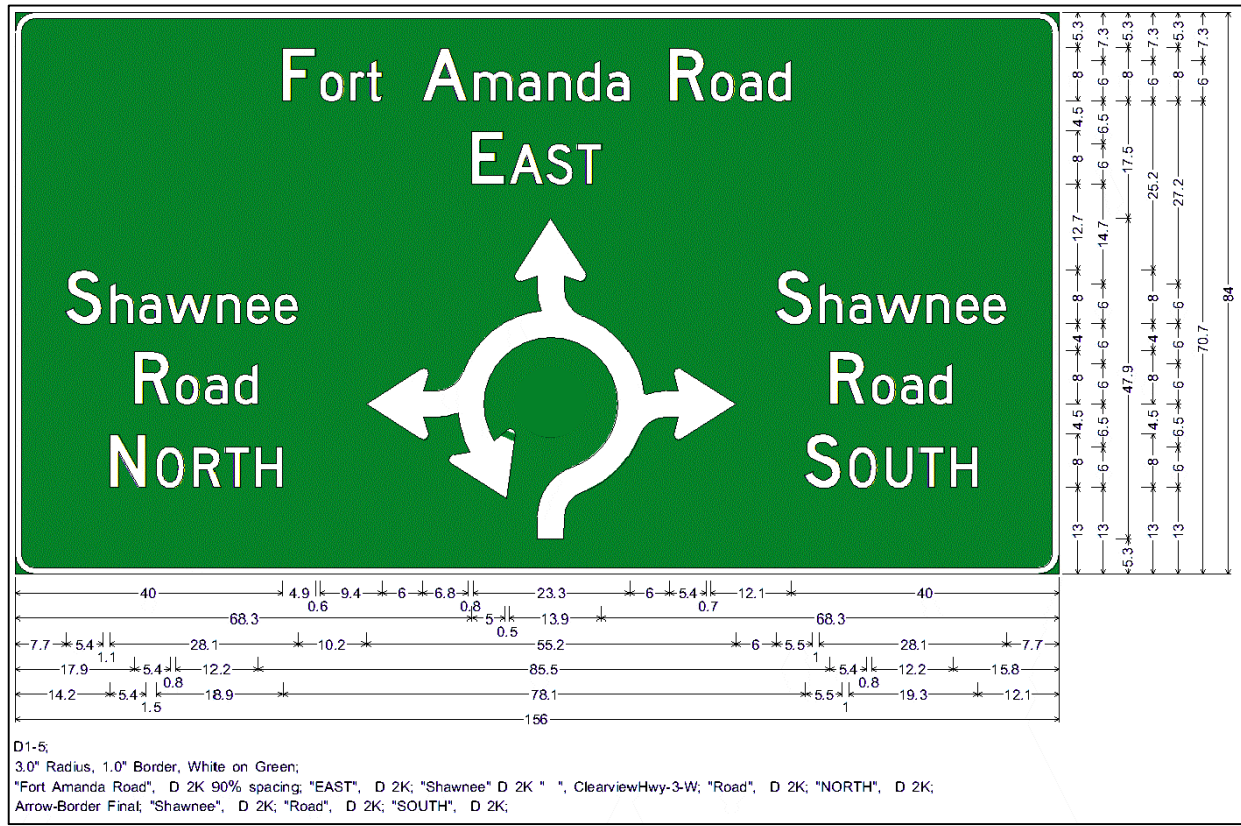
CALCULATED  
CCW  
CHECKED  
CRP

OVERHEAD SIGN DETAILS

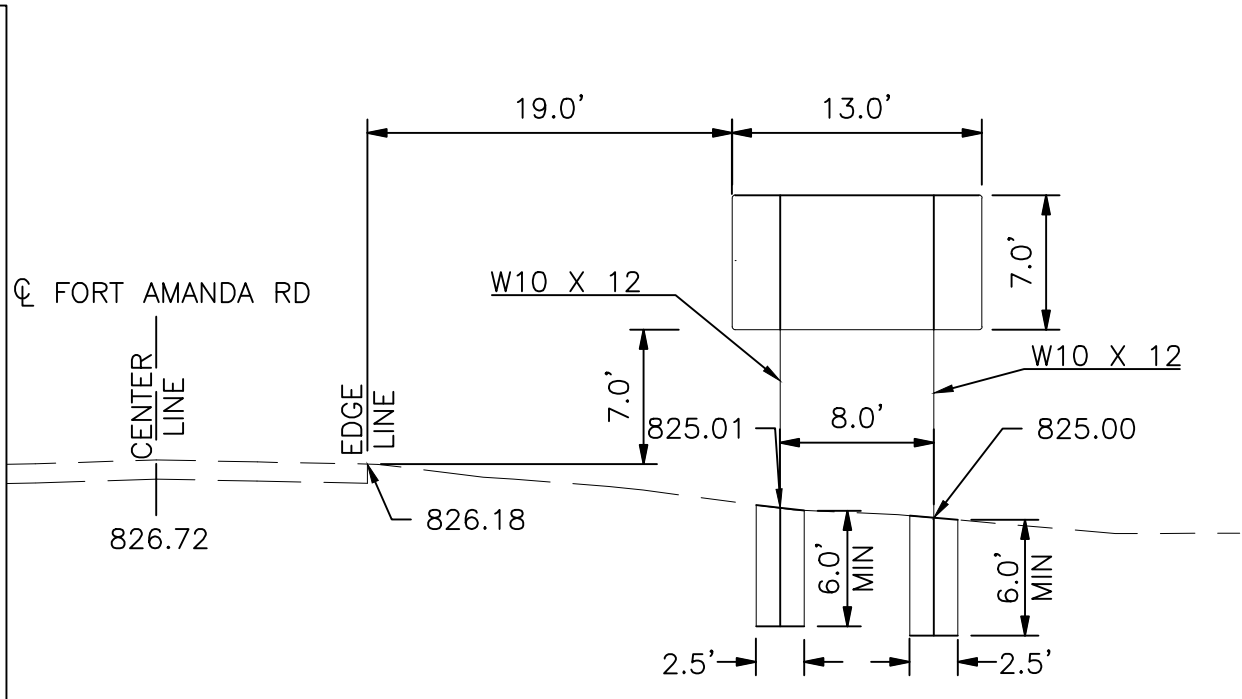
ALL-SHAWNEE RD



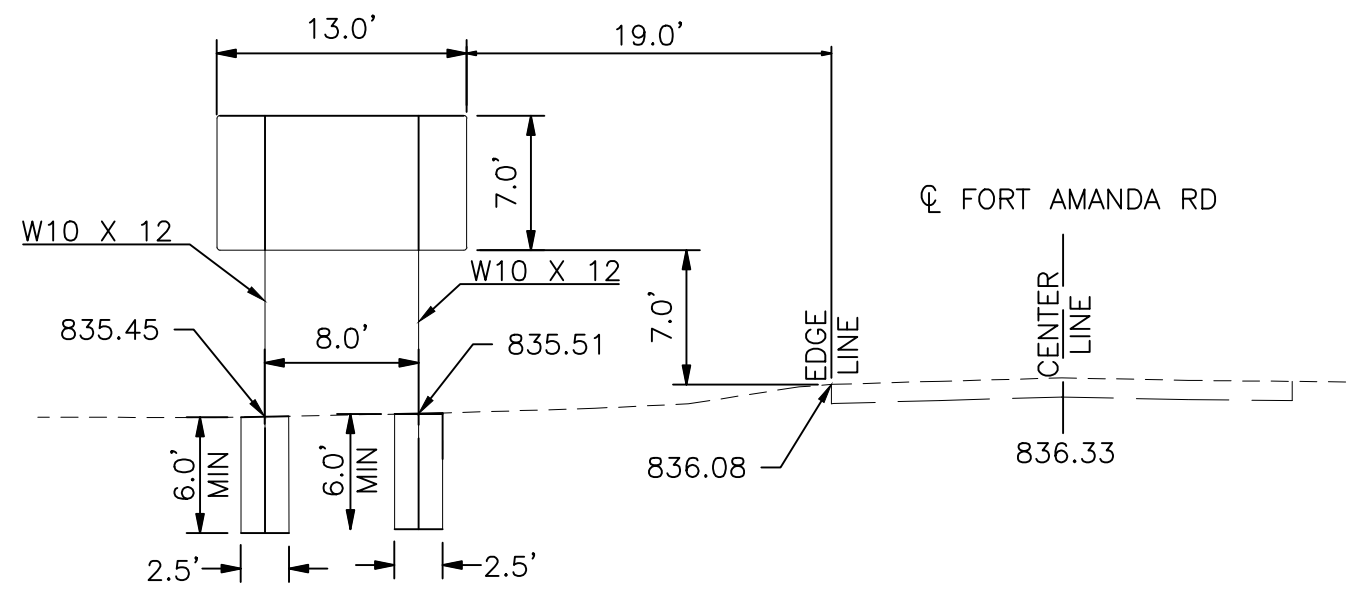
x:\Projects\GFL\2021\100400 Allen County Eng-S\ALL\2021100400\400-Engineering\Traffic\Sheets\7305TD001.dwg 25-Mar-21 4:26 PM



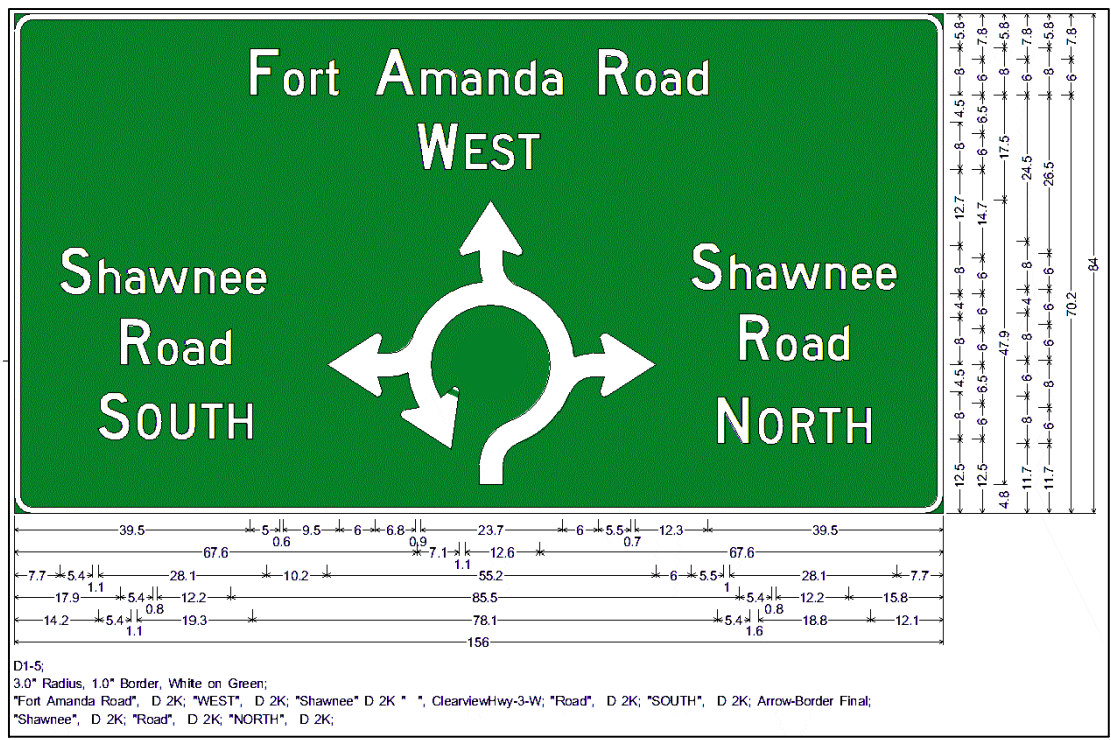
D1-5;  
 3.0" Radius, 1.0" Border, White on Green;  
 "Fort Amanda Road", D 2K 90% spacing, "EAST", D 2K; "Shawnee" D 2K " ", ClearviewHwy-3-W; "Road", D 2K; "NORTH", D 2K;  
 Arrow-Border Final; "Shawnee", D 2K; "Road", D 2K; "SOUTH", D 2K;



(S-1) STA. 203+45 FORT AMANDA ROAD



(S-2) STA. 221+55 FORT AMANDA ROAD



D1-5;  
 3.0" Radius, 1.0" Border, White on Green;  
 "Fort Amanda Road", D 2K; "WEST", D 2K; "Shawnee" D 2K " ", ClearviewHwy-3-W; "Road", D 2K; "SOUTH", D 2K; Arrow-Border Final;  
 "Shawnee", D 2K; "Road", D 2K; "NORTH", D 2K;

ELEVATIONS TO BE ADDED AFTER STAGE 3  
 PLANS ARE APPROVED.