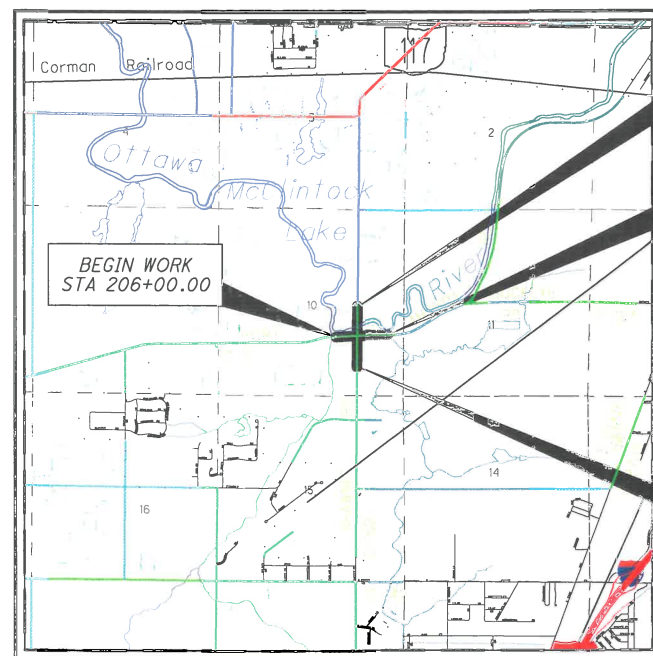


X:\Projects\GFL\2020\2021\100400-Allen County Eng-S\ALL\2021100400\400-Engineering\Roadway\Sheets\77305GT001.dwg Mar-21 9:42 AM



**LOCATION MAP**

LATITUDE: 40°42'21" N LONGITUDE: 84°09'05" W



PORTION TO BE IMPROVED	_____
INTERSTATE HIGHWAY	_____
FEDERAL ROUTES	_____
STATE ROUTES	_____
COUNTY & TOWNSHIP ROADS	_____
OTHER ROADS	_____

DESIGN DESIGNATION	SHAWNEE RD NORTH OF FORT AMANDA RD	SHAWNEE RD SOUTH OF FORT AMANDA RD	FORT AMANDA RD EAST OF SHAWNEE RD	FORT AMANDA RD WEST OF SHAWNEE RD
CURRENT ADT (2011)	13590	14100	9560	8830
DESIGN YEAR ADT (2031)	16150	16870	10100	9160
DESIGN HOURLY VOLUME (2031)	1610	1690	1000	900
DIRECTIONAL DISTRIBUTION	51%	50%	52%	54%
TRUCKS (24 HOUR B&C)	1%	2%	1%	1%
DESIGN SPEED	45 MPH	45 MPH	45 MPH	45 MPH
LEGAL SPEED	45 MPH	45 MPH	45 MPH	45 MPH
DESIGN FUNCTIONAL CLASSIFICATION:	URBAN MINOR ARTERIAL	URBAN MINOR ARTERIAL	URBAN MINOR ARTERIAL	URBAN COLLECTOR
NHS PROJECT	NO			

**DESIGN EXCEPTIONS**  
NONE

STATE OF OHIO  
ALLEN COUNTY ENGINEER

ALL - CR 152 SHAWNEE ROAD  
ALLEN COUNTY  
CITY OF LIMA

**INDEX OF SHEETS:**

TITLE SHEET	1
GENERAL NOTES	2 - 6
MAINTENANCE OF TRAFFIC NOTES	7
GENERAL SUMMARY	8 - 9
SUBSUMMARIES	10 - 13
SIGNING AND PAVEMENT MARKING PLAN	14 - 21

**PROJECT DESCRIPTION**

TRAFFIC IMPROVEMENTS OF A 0.35 MILE PORTION OF SHAWNEE ROAD AND FORT AMANDA ROAD AT THE ROUNDABOUT AT THE INTERSECTION OF SHAWNEE ROAD AND FORT AMANDA ROAD.

PROJECT EARTH DISTURBED AREA: 0.01 ACRES  
ESTIMATED CONTRACTOR EARTH DISTURBED AREA: 0 ACRES  
NOTICE OF INTENT EARTH DISTURBED AREA: 0.01 ACRES

**2019 SPECIFICATIONS**

THE STANDARD SPECIFICATIONS OF THE STATE OF OHIO, DEPARTMENT OF TRANSPORTATION, INCLUDING SUPPLEMENTAL SPECIFICATIONS LISTED IN THE PLANS AND CHANGES LISTED IN THE PROPOSAL SHALL GOVERN THIS IMPROVEMENT.

I HEREBY APPROVE THESE PLANS AND DECLARE THAT THE MAKING OF THIS IMPROVEMENT WILL NOT REQUIRE THE CLOSING TO TRAFFIC OF THE HIGHWAY AND THAT PROVISIONS FOR THE MAINTENANCE AND SAFETY OF TRAFFIC WILL BE AS SET FORTH ON THE PLANS AND ESTIMATES.



ENGINEERS SEAL:  
  
SIGNED: *Chad Rundle*  
DATE: 3/16/21

STANDARD CONSTRUCTION DRAWINGS				SUPPLEMENTAL SPECIFICATIONS
				ALLEN COUNTY SCD'S
MT-95.50	7-21-17			SS 800 7-17-20
MT-95.60	4-19-19			SS 807 7-17-20
TC-16.22	7-17-20	MT-97.12	1-20-17	SS 821 4-20-12
TC-21.21	4-17-20	MT-99.20	4-19-19	SS 832 10-19-18
TC-41.10	7-19-13			SS 850 7-17-20
TC-41.20	10-18-13			SS 905 4-17-20
TC-41.41	7-19-19			SS 916 10-16-20
TC-42.20	10-18-13			SS 921 4-20-12
TC-52.10	10-18-13			SPECIAL PROVISIONS
TC-52.20	7-20-18			
TC-65.11	7-21-17			
TC-71.10	1-19-18			

APPROVED *Chad Rundle*  
DATE 03/17/21 ALLEN COUNTY ENGINEER

APPROVED *Christopher A. Hughes*  
DATE 03/21/2021 DISTRICT DEPUTY DIRECTOR

APPROVED \_\_\_\_\_  
DATE \_\_\_\_\_ DIRECTOR, DEPARTMENT OF TRANSPORTATION

FEDERAL PROJECT NO. E(210)041
PID NO. 114150
CONSTRUCTION PROJECT NO.
RAILROAD INVOLVEMENT NONE
ALL-SHAWNEE RD
1/21

X:\Projects\GFL\2020\2021\00-400 Allen County Eng-S\ALL\2021\00-400\400-Engineering\Roadway\Sheets\77306\002.dwg May-21 8:00 AM

0 0 0 0

**REMOVED NOTE**

3

3  
21

ALL-SHAWNEE RD

GENERAL NOTES

CALCULATED
CCM
CHECKED
CSR



X:\Projects\GFL\2020\2021\100400 Allen County Eng-S\ALL\2021\00400\400-Engineering\Roadway\Sheets\773056\002.dwg May-21 8:05 AM

0

0

0

0

**REMOVED NOTE**

3

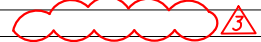
5  
21

ALL - SHAWNEE RD

GENERAL NOTES

CALCULATED  
CCW  
CHECKED  
CSR

X:\Projects\GFL\2020\2021\100400 Allen County Eng-S\ALL\2021\100400\400-Engineering\Roadway\Sheets\77305CG001.dwg May-21 8:26 AM

SHEET NUM.										PART.		ALT	ITEM	ITEM	GRAND	UNIT	DESCRIPTION	SEE SHEET NO.
6	10	11	12	13						01/SAE/O T	02/NFP/ OT	(X)	ITEM	EXT	TOTAL			
PAVEMENT ALTERNATES																		
17,200										17,200		X	SPECIAL	69098300	17,200	SY	SPECIAL, MISC.: ASPHALT PENETRATING SEALER (RECLAMITE) (ALTERNATE 1)	6
17,200										17,200		X	SPECIAL	69098300	17,200	SY	SPECIAL, MISC.: ASPHALT PENETRATING SEALER (BIORESTOR) (ALTERNATE 2)	6
17,200										17,200		X	SPECIAL	69098300	17,200	SY	SPECIAL, MISC.: ASPHALT PENETRATING SEALER (STAR SEAL) (ALTERNATE 3)	6
TRAFFIC CONTROL																		
		12								12			621	00101	12	EACH	RPM, AS PER PLAN	2
				3						3			625	32000	3	EACH	GROUND ROD	
				54						54			630	03100	54	FT	GROUND MOUNTED SUPPORT, NO. 3 POST	
				88						88			630	07600	88	FT	GROUND MOUNTED STRUCTURAL BEAM SUPPORT, W10X12	
				4						4			630	09000	4	EACH	BREAKAWAY STRUCTURAL BEAM CONNECTION	
				1						1			630	72520	1	EACH	OVERHEAD SIGN SUPPORT, TYPE TC-16.22, DESIGN 7	
				2						2			630	72540	2	EACH	OVERHEAD SIGN SUPPORT, TYPE TC-16.22, DESIGN 12	19
				100						100			630	80100	100	SF	SIGN, FLAT SHEET	
				182						182			630	80200	182	SF	SIGN, GROUND MOUNTED EXTRUSHEET	
				4						4			630	84500	4	EACH	GROUND MOUNTED STRUCTURAL BEAM SUPPORT FOUNDATION	
				3						3			630	84510	3	EACH	RIGID OVERHEAD SIGN SUPPORT FOUNDATION	
				3						3			630	80510	3	EACH	SIGN, STREET NAME	
				15						15			630	84900	15	EACH	REMOVAL OF GROUND MOUNTED SIGN AND DISPOSAL	
				4						4			630	85100	4	EACH	REMOVAL OF GROUND MOUNTED SIGN AND REERECTION	
				12						12			630	86002	12	EACH	REMOVAL OF GROUND MOUNTED POST SUPPORT AND DISPOSAL	
				8						8			630	86011	8	EACH	REMOVAL OF GROUND MOUNTED POST SUPPORT AND REERECTION, AS PER PLAN	2
	16		44							60			646	10400	60	FT	STOP LINE	
	218	120	201							539			646	10500	539	FT	CROSSWALK LINE	
			119							119			646	10600	119	FT	TRANSVERSE/DIAGONAL LINE, WHITE	
	214		294							508			646	10600	508	FT	TRANSVERSE/DIAGONAL LINE, YELLOW	
	127									127			646	10800	127	SF	ISLAND MARKING	
	14	6	7							27			646	20300	27	EACH	LANE ARROW	
	106	88								194			646	20800	194	FT	YIELD LINE	
		6								6			646	20400	6	EACH	WORD ON PAVEMENT, 72" 	
TRAFFIC CONTROL ALTERNATES																		
	0.07	0.02	0.04							0.13		X	807	12010	0.13	MILE	WET REFLECTIVE EPOXY PAVEMENT MARKING, EDGE LINE, 6", WHITE (ALTERNATE 1)	
	0.24	0.12	0.08							0.44		X	807	12010	0.44	MILE	WET REFLECTIVE EPOXY PAVEMENT MARKING, EDGE LINE, 6", YELLOW (ALTERNATE 1)	
	0.06	0.04	0.01							0.11		X	807	12110	0.11	MILE	WET REFLECTIVE EPOXY PAVEMENT MARKING, LANE LINE, 6", SOLID (ALTERNATE 1)	
	0.18		0.44							0.62		X	807	12200	0.62	MILE	WET REFLECTIVE EPOXY PAVEMENT MARKING, CENTER LINE (ALTERNATE 1)	
	0.2									0.2		X	807	12200	0.2	MILE	WET REFLECTIVE EPOXY PAVEMENT MARKING, CENTER LINE, 2-WAY LEFT TURN (ALTERNATE 1)	
	254	694	237							1,185		X	807	12410	1,185	FT	WET REFLECTIVE EPOXY PAVEMENT MARKING, DOTTED LINE, 6" (ALTERNATE 1)	
	115		293							408		X	807	12300	408	FT	WET REFLECTIVE EPOXY PAVEMENT MARKING, CHANNELIZING LINE, 8" (ALTERNATE 1)	
	0.75	0.18	0.57							1.5		X	850	10010	1.5	MILE	GROOVING FOR 6" RECESSED PAVEMENT MARKING, (ASPHALT) (ALTERNATE 1)	
	254	694	237							1,185		X	850	10110	1,185	FT	GROOVING FOR 6" RECESSED PAVEMENT MARKING, (ASPHALT) (ALTERNATE 1)	
	115		293							408		X	850	10120	408	FT	GROOVING FOR 8" RECESSED PAVEMENT MARKING, (ASPHALT) (ALTERNATE 1)	
	0.07	0.02	0.04							0.13		X	646	10010	0.13	MILE	EDGE LINE, 6", WHITE (ALTERNATE 2)	
	0.24	0.12	0.08							0.44		X	646	10010	0.44	MILE	EDGE LINE, 6", YELLOW (ALTERNATE 2)	
	0.06	0.04	0.01							0.11		X	646	10110	0.11	MILE	LANE LINE, 6", SOLID (ALTERNATE 2)	
	0.18		0.44							0.62		X	646	10200	0.62	MILE	CENTER LINE (ALTERNATE 2)	
	0.2									0.2		X	646	10200	0.2	MILE	CENTER LINE, 2-WAY LEFT TURN (ALTERNATE 2)	
	254	694	237							1,185		X	646	20504	1,185	FT	DOTTED LINE, 6" (ALTERNATE 2)	
	115		293							408		X	646	10300	408	FT	CHANNELIZING LINE, 8" (ALTERNATE 2)	

CALCULATED	CCW	CHECKED	CSR
GENERAL SUMMARY			
ALL-SHAWNEE RD			
8			
21			



x:\Projects\GFL\2020\2021\100400\100400\400-Engineering\Traffic\Sheets\7305TS001.dwg 07-May-21 8:41 AM

REF NO.	SHEET NO.	LOCATION	STATION TO STATION		SIDE	621	807	807	807	807	807	807	646	646	646	646	646	646	807	646	850	850	850	
						RPM, AS PER PLAN	WET REFLECTIVE EPOXY PAVEMENT MARKING, EDGE LINE, 6", WHITE	WET REFLECTIVE EPOXY PAVEMENT MARKING, EDGE LINE, 6", YELLOW	WET REFLECTIVE EPOXY PAVEMENT MARKING, LANE LINE, 6", SOLID	WET REFLECTIVE EPOXY PAVEMENT MARKING, CENTERLINE	WET REFLECTIVE EPOXY PAVEMENT MARKING, CENTERLINE, 2-WAY LEFT TURN	WET REFLECTIVE EPOXY PAVEMENT MARKING, CHANNELIZING LINE, 8"	STOP LINE	CROSSWALK LINE	TRANSVERSE/DIAGONAL LINE, WHITE	TRANSVERSE/DIAGONAL LINE, YELLOW	ISLAND MARKING	LANE ARROW	YIELD LINE	WET REFLECTIVE EPOXY PAVEMENT MARKING, DOTTED LINE, 6"	WORD ON PAVEMENT, 72"	GROOVING FOR 6" RECESSED PAVEMENT, (ASPHALT)	GROOVING FOR 6" RECESSED PAVEMENT, (ASPHALT)	GROOVING FOR 8" RECESSED PAVEMENT, (ASPHALT)
						EACH	MILE	MILE	MILE	MILE	MILE	FT	FT	FT	FT	SF	EACH	FT	FT	EACH	MILE	FT	FT	
LA-14	15	SHAWNEE ROAD	115+70		LT																			
LA-15			115+70		LT																			
RPM-1			113+33	113+68	RT	3																		
RPM-2			115+03	115+63	LT	3																		
DL-2			114+05	115+00	RT																			
DL-2A			116+17	118+57	RT																			
DL-2B			117+78	118+47	RT																			
DL-5			114+45	114+88	RT																			
LL-1A			115+00	116+17	RT				0.02															
WD-1			113+62		LT																			
WD-2			113+67		LT																			
WD-3			115+02		LT																			
WD-4			115+09		LT																			
ELY-10	15	FORT AMANDA ROAD	210+00	211+45	LT			0.03																
ELY-11			210+00	211+45	RT			0.03																
XW-10			210+90		RT								50											
XW-11			210+90		LT								70											
YL-10			211+45	211+54	RT																			
ELW-10			211+80	212+27	RT		0.01																	
ELW-11			212+13	212+40	LT		0.01																	
LA-20			212+25		LT																			
LA-21			212+25		LT																			
YL-11			212+68	212+84	LT																			
LL-11			212+78	213+58	LT				0.02															
ELY-12			212+83	214+00	RT			0.03																
ELY-13			212+84	214+00	LT			0.03																
LA-22			213+50		LT																			
LA-23			213+50		LT																			
RPM-10			210+96	211+44	RT	3																		
RPM-11			212+84	213+58	LT	3																		
DL-3			209+74	210+86	LT																			
WD-6			212+87		LT																			
WD-7			212+92		LT																			
TOTALS CARRIED TO GENERAL SUMMARY						12.00	0.02	0.12	0.04	0.00	0.00	0.00	0.00	120.00	0.00	0.00	0.00	6.00	88.00	694.00	6.00	0.18	694.00	0.00

3

CALCULATED  
CCW  
CHECKED  
CSR

PAVEMENT MARKING SUBSUMMARY

ALL-SHAWNEE RD



X:\Projects\GFL\2020\2021\100400\100400\Allen County Eng-S\ALL\2021\100400\400-Engineering\Traffic\Sheets\77305TS001.dwg 07-May-21 8:43 AM

REF NO.	SHEET NO.	LOCATION	STATION TO STATION	SIDE	621	807	807	807	807	807	807	646	646	646	646	646	646	646	807	646	850	850	850	
					RPM, AS PER PLAN	WET REFLECTIVE EPOXY PAVEMENT MARKING, EDGE LINE, 6", WHITE	WET REFLECTIVE EPOXY PAVEMENT MARKING, EDGE LINE, 6", YELLOW	WET REFLECTIVE EPOXY PAVEMENT MARKING, LANE LINE, 6", SOLID	WET REFLECTIVE EPOXY PAVEMENT MARKING, CENTERLINE	WET REFLECTIVE EPOXY PAVEMENT MARKING, CENTERLINE, 2-WAY LEFT TURN	WET REFLECTIVE EPOXY PAVEMENT MARKING, CHANNELIZING LINE, 8"	STOP LINE	CROSSWALK LINE	TRANSVERSE/DIAGONAL LINE, WHITE	TRANSVERSE/DIAGONAL LINE, YELLOW	ISLAND MARKING	LANE ARROW	YIELD LINE	WET REFLECTIVE EPOXY PAVEMENT MARKING, DOTTED LINE, 6"	WORD ON PAVEMENT, 72"	GROOVING FOR 6" RECESSED PAVEMENT, (ASPHALT)	GROOVING FOR 6" RECESSED PAVEMENT, (ASPHALT)	GROOVING FOR 8" RECESSED PAVEMENT, (ASPHALT)	
					EACH	MILE	MILE	MILE	MILE	MILE	FT	FT	FT	FT	FT	SF	EACH	FT	FT	EACH	MILE	FT	FT	
ELW-3	16	SHAWNEE ROAD	117+00	119+03	LT		0.04																	
TLW-1			117+00	119+03	LT									119										
TLY-2			117+00	118+27	CL																			
CL-5			118+27	120+57	LT				0.05															
CH-2			118+47	120+57	RT									211									211	
LA-15			118+85		CL																			
LA-16			119+75		CL																			
LA-17			120+50		CL																			
XW-4			120+77	121+20	LT																			
SL-2			120+84	120+98	LT									14	75									
CL-6			121+32	123+52	CL				0.09															
TLY-3			121+32	123+52	CL																			
DL-6			117+87	118+47	RT														60				60	
CL-10	17	FORT AMANDA ROAD	206+00	209+68	CL				0.14															
TLY-10			206+00	209+68	CL																			
ELY-10			209+68	210+00	LT																			
ELY-11			209+68	210+00	RT																			
ELY-12	18	FORT AMANDA ROAD	214+00	215+55	RT																			
ELY-13			214+00	215+55	LT																			
XW-12			215+80	216+52	RT																			
SL-10			216+11	216+40	RT									30	126									
CL-11			216+32	220+25	CL				0.15															
TLY-11			217+33	220+25	CL																			
CH-10			216+32	217+13	LT									82									82	
LA-24			216+40		CL																			
LA-25			217+05		CL																			
DLW-10			217+13	217+83	LT																			
CL-12	18	BLUE JACKET COURT	34+48	34+72	CL				0.01	0.01														
LL-12			34+48	34+72	RT																			
LA-26			34+65		RT																			
LA-27			34+65		RT																			
TOTALS CARRIED TO GENERAL SUMMARY						0.00	0.04	0.08	0.01	0.44	0.00	293.00	44.00	201.00	119.00	294.00	0.00	7.00	0.00	237.00	0.00	0.57	237.00	293.00

3

CALCULATED  
 CCW  
 CHECKED  
 CSR  
 PAVEMENT MARKING SUBSUMMARY  
 ALL-SHAWNEE RD  
 12  
 21