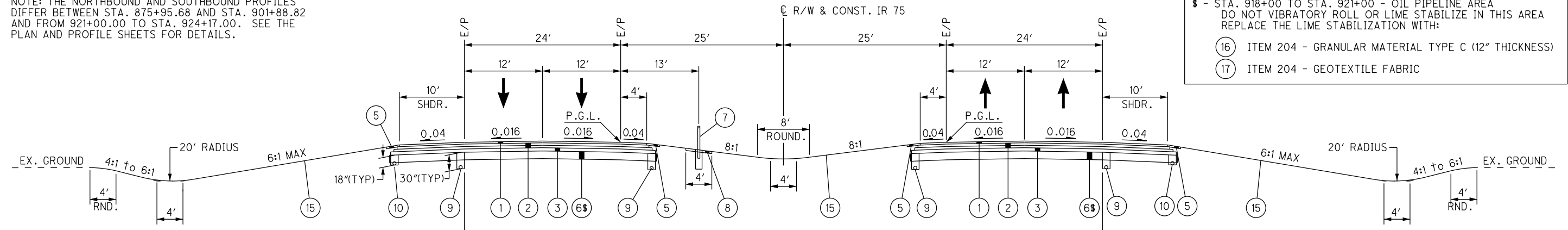
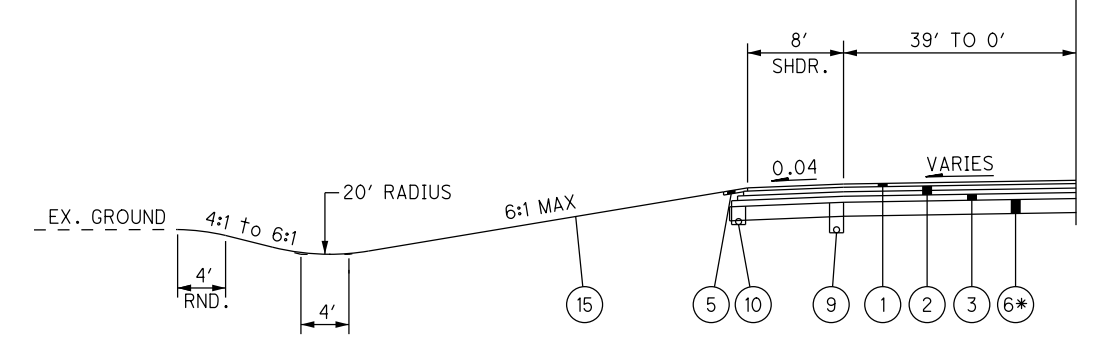


NOTE: THE NORTHBOUND AND SOUTHBOUND PROFILES DIFFER BETWEEN STA. 875+95.68 AND STA. 901+88.82 AND FROM 921+00.00 TO STA. 924+17.00. SEE THE PLAN AND PROFILE SHEETS FOR DETAILS.

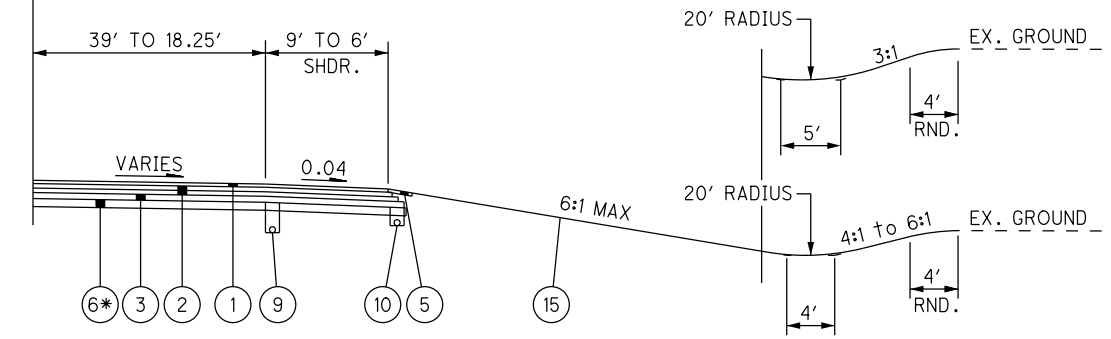
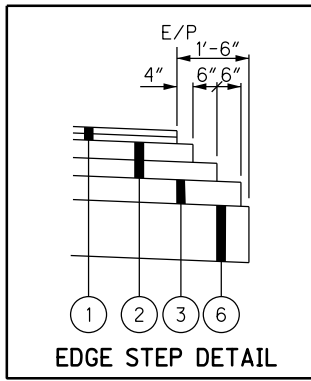
§ - STA. 918+00 TO STA. 921+00 - OIL PIPELINE AREA
DO NOT VIBRATORY ROLL OR LIME STABILIZE IN THIS AREA
REPLACE THE LIME STABILIZATION WITH:
 (16) ITEM 204 - GRANULAR MATERIAL TYPE C (12" THICKNESS)
 (17) ITEM 204 - GEOTEXTILE FABRIC



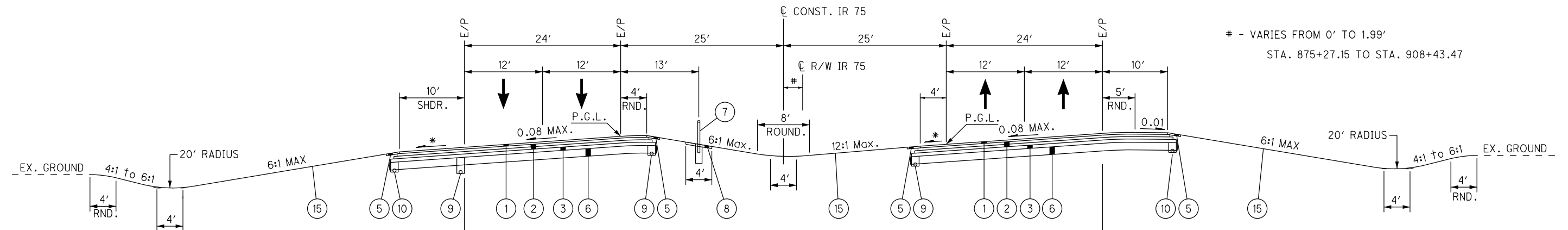
NORMAL SECTION
STA. 908+93.97 TO STA. 924+17.00 = 1523.03 FT



DECELERATION LANE SECTION
STA. 916+04.02 TO STA. 924+15.00 = 810.98 FT



ACCELERATION LANE SECTION
STA. 915+85.17 TO STA. 924+17.00 = 831.83 FT

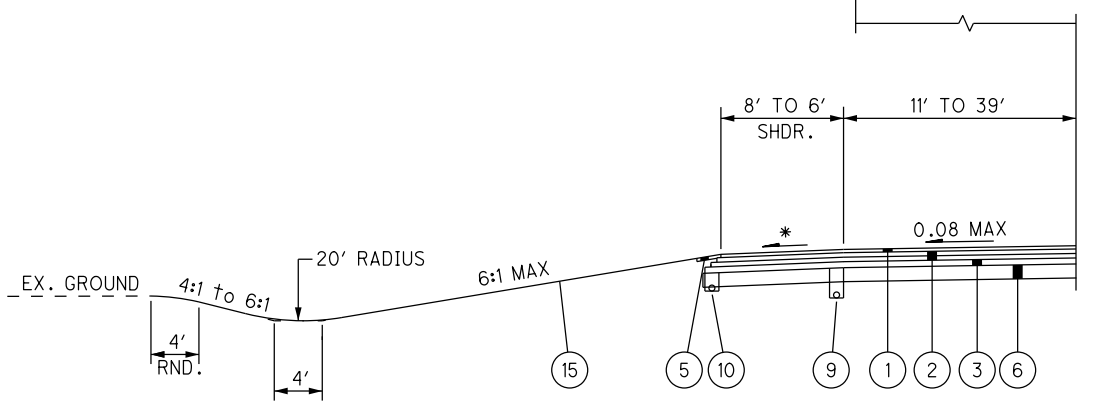


SUPERELEVATED SECTION
STA. 874+76.65 TO STA. 908+41.09 = 3364.44 FT
STA. 908+43.47 TO STA. 908+93.97 = 50.50 FT

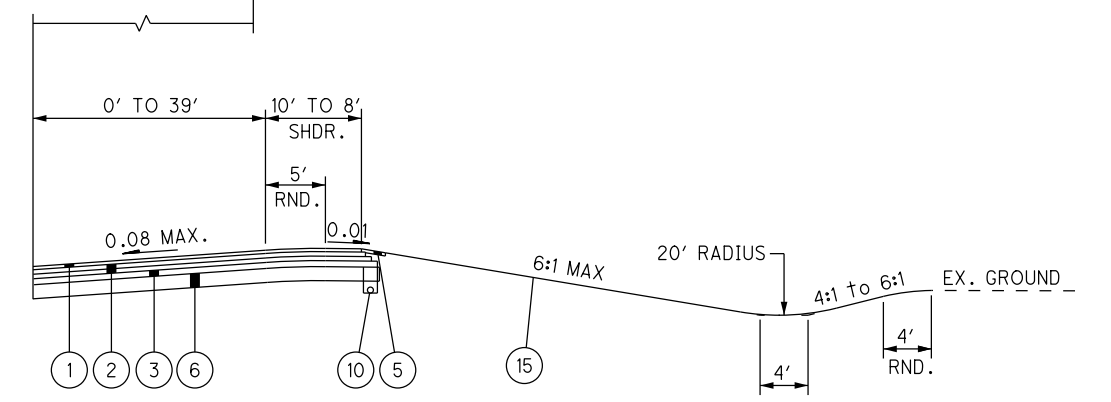
- VARIES FROM 0' TO 1.99'
STA. 875+27.15 TO STA. 908+43.47

Station Equation = Sta. 908+41.09 \bar{C} CONST. IR 75 BK=
Sta. 908+43.47 \bar{C} CONST. & R/W IR 75 AH

* 0.04 OR SUPERELEVATION,
WHICHEVER IS GREATER



ACCELERATION LANE SECTION
STA. 874+76.65 TO STA. 892+70.60 = 1793.95 FT



DECELERATION LANE SECTION
STA. 889+00.00 TO STA. 897+77.10 = 877.10 FT

FOR PROPOSED LEGEND, SEE SHEET 7.

I:\Project\data\94214\Design\Roadway\Sheets\94214_GY003.dgn Sheet 26-NOV-2019 6:36AM mmueller

TYPICAL SECTIONS

ALL-75-15.80

I:\Project\94214\Design\Roadway\Sheets\94214_GG002.dgn Sheet 11/5/2019 11:03:33 AM tbolemba

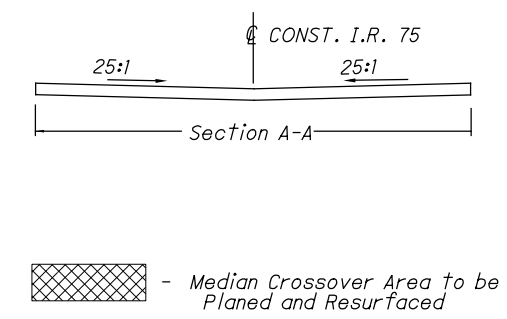
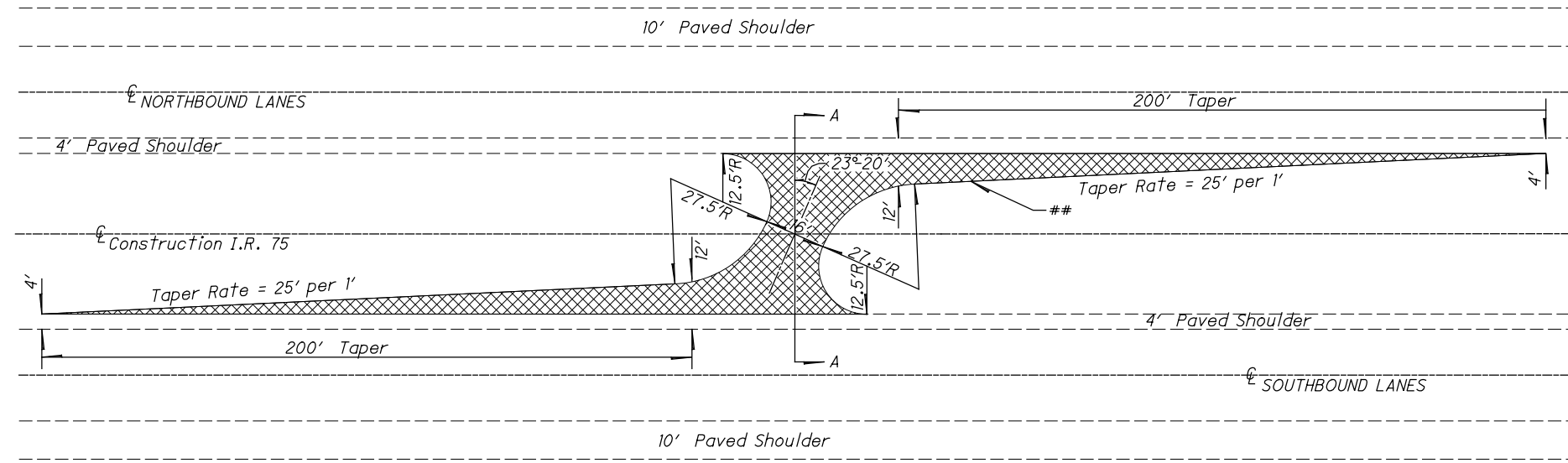
SHEET NUM.							PART.					ITEM	ITEM EXT	GRAND TOTAL	UNIT	DESCRIPTION	SEE SHEET NO.
9	60	62	63A	143	150	163	01/SAF/PV	02/IMS/PV	03/IMS/PV	04/BRO/BR	05/SAE/OT						
DRAINAGE																	
	13.1											602	20000	13.1	CY	CONCRETE MASONRY	
		17,169										605	1100	17,169	FT	6" SHALLOW PIPE UNDERDRAINS	
		17,626										605	14000	17,626	FT	6" BASE PIPE UNDERDRAINS	
300		251										605	13300	551	FT	6" UNCLASSIFIED PIPE UNDERDRAINS	
50		1,596										611	00510	1,646	FT	6" CONDUIT, TYPE F FOR UNDERDRAIN OUTLETS	
	112	30										611	01500	142	FT	6" CONDUIT, TYPE F	
50												611	02600	50	FT	8" CONDUIT, TYPE F	
	20											611	03700	20	FT	10" CONDUIT, TYPE F	
50												611	05200	50	FT	12" CONDUIT, TYPE F	
	401											611	05900	401	FT	15" CONDUIT, TYPE B	
	733											611	06100	733	FT	15" CONDUIT, TYPE C	
	272											611	07400	272	FT	18" CONDUIT, TYPE B	
	291											611	10400	291	FT	24" CONDUIT, TYPE B	
	686											611	10600	686	FT	24" CONDUIT, TYPE C	
	172											611	13400	172	FT	30" CONDUIT, TYPE B	
	798											611	13600	798	FT	30" CONDUIT, TYPE C	
	117											611	16600	117	FT	36" CONDUIT, TYPE C	
	71											611	19400	71	FT	42" CONDUIT, TYPE B	
	162											611	19600	162	FT	42" CONDUIT, TYPE C	
	916											611	21100	916	FT	48" CONDUIT, TYPE C	
				360								611	94800	360	FT	8' X 4' CONDUIT, TYPE A, 706.05	
	15											611	98410	15	EACH	CATCH BASIN, NO. 8	
	7											611	98434	7	EACH	CATCH BASIN, NO. 8A	
	3											611	99574	3	EACH	MANHOLE, NO. 3	
	1											611	99574	1	EACH	MANHOLE, NO. 3, 60" I.D.	
	1											611	99574	1	EACH	MANHOLE, NO. 3, 72" I.D.	
	3											611	99574	3	EACH	MANHOLE, NO. 3, 84" I.D.	
2	2	12										611	99710	16	EACH	PRECAST REINFORCED CONCRETE OUTLET	
PAVEMENT																	
350					101							253	02000	350	CY	PAVEMENT REPAIR	
												253	02001	101	CY	PAVEMENT REPAIR, AS PER PLAN	150
												253	90000	150	CY	PAVEMENT REPAIR, MISC.: SHOULDER REPAIR FOR MOT	10
		297,587										254	01000	297,587	SY	PAVEMENT PLANING, ASPHALT CONCRETE, 1-1/2" DEPTH	
					1,486							255	10161	1,486	SY	FULL DEPTH PAVEMENT REMOVAL AND RIGID REPLACEMENT, CLASS QC MS, AS PER PLAN	150
					6,388							255	20000	6,388	FT	FULL DEPTH PAVEMENT SAWING	
		15,056					1,905	13,059	92			301	46000	15,056	CY	ASPHALT CONCRETE BASE, PG64-22	
		10,387					1,327	8,998	62			304	20000	10,387	CY	AGGREGATE BASE	
		35,088					1,228	8,469	25,391			407	20000	35,088	GAL	NON-TRACKING TACK COAT	
		11,514					451	3,005	8,058			442	00100	11,514	CY	ANTI-SEGREGATION EQUIPMENT	
		14,868					306	2,120	12,442			442	10300	14,868	CY	ASPHALT CONCRETE SURFACE COURSE, 12.5 MM, TYPE A (447)	
		2,848					357	2,473	18			442	20200	2,848	CY	ASPHALT CONCRETE INTERMEDIATE COURSE, 19 MM, TYPE A (448)	
		3,198					84	457	2,657			617	10100	3,198	CY	COMPACTED AGGREGATE	
		26.95					0.44	2.93	23.58			618	40600	26.95	MILE	RUMBLE STRIPS, SHOULDER (ASPHALT CONCRETE)	
LIGHTING																	
						30						625	00480	30	EACH	CONNECTION, UNFUSED PERMANENT	
						4						625	15100	4	EACH	LIGHT TOWER FOUNDATION, 36" X 20' DEEP	
						1,710						625	23200	1,710	FT	NO. 4 AWG 2400 VOLT DISTRIBUTION CABLE	
						8,667						625	24320	8,667	FT	1-1/2" DUCT CABLE WITH THREE NO. 4 AWG 2400 VOLT CABLES	
						500						625	25908	500	FT	CONDUIT, JACKED OR DRILLED, 725.0523"	
						48						625	26263	48	EACH	LUMINAIRE, HIGH MAST, SOLID STATE (LED), AS PER PLAN	163
						8,467						625	29002	8,467	FT	TRENCH, 24" DEEP	
						10						625	30706	10	EACH	PULL BOX, 725.08, 24"	
						4						625	32000	4	EACH	GROUND ROD	
						4						625	35020	4	EACH	RE-ERECT EXISTING LIGHT TOWER	

GENERAL SUMMARY

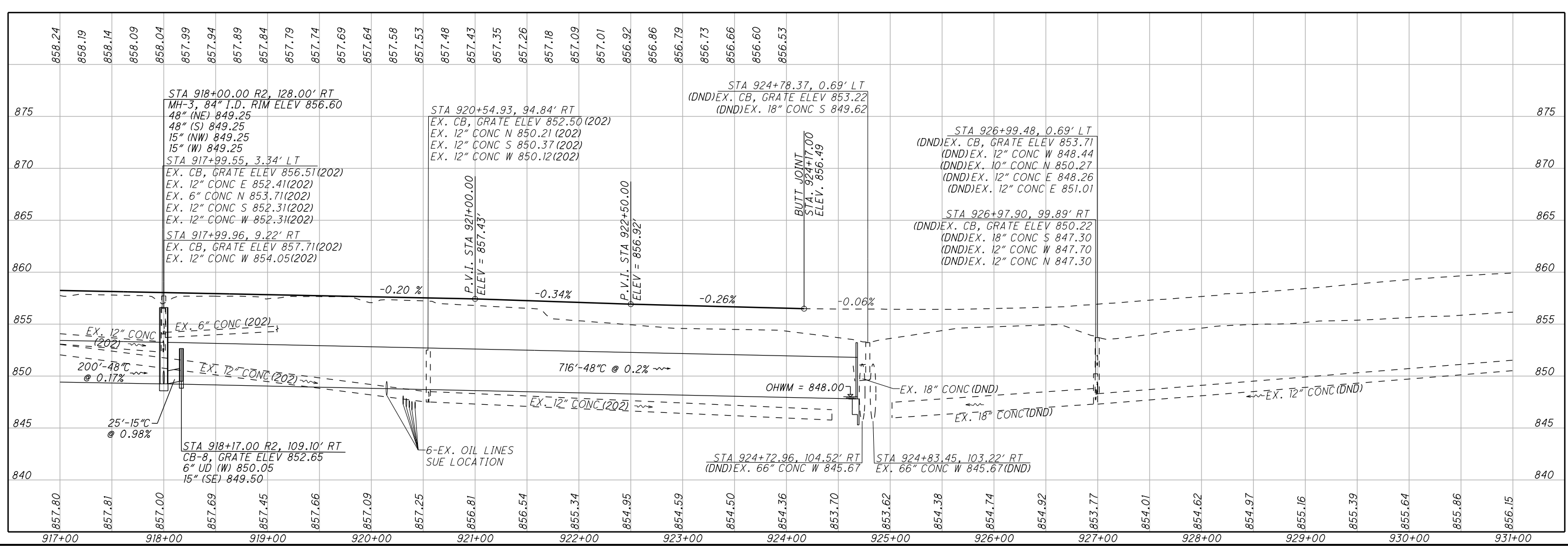
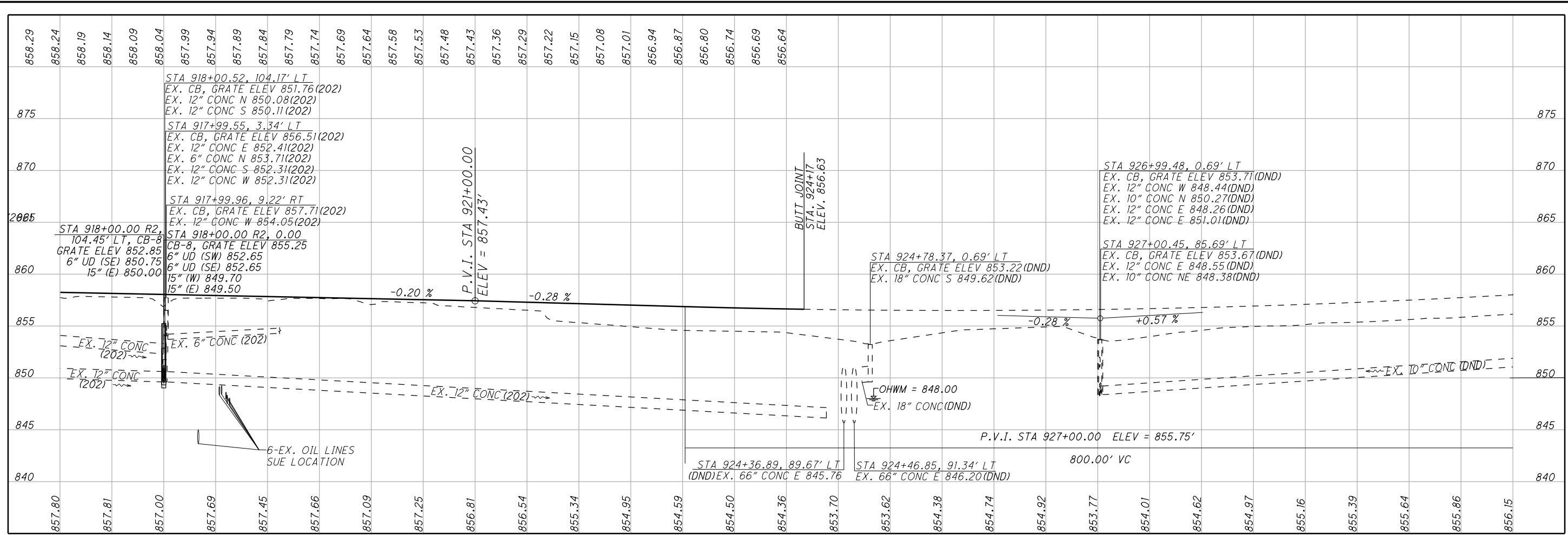
ALL - 75 - 15.80

I:\Project\data\94214\Design\Roadway\Sheets\94214_GS007.dgn Sheet 11/5/2019 10:33:34 AM tbolemba

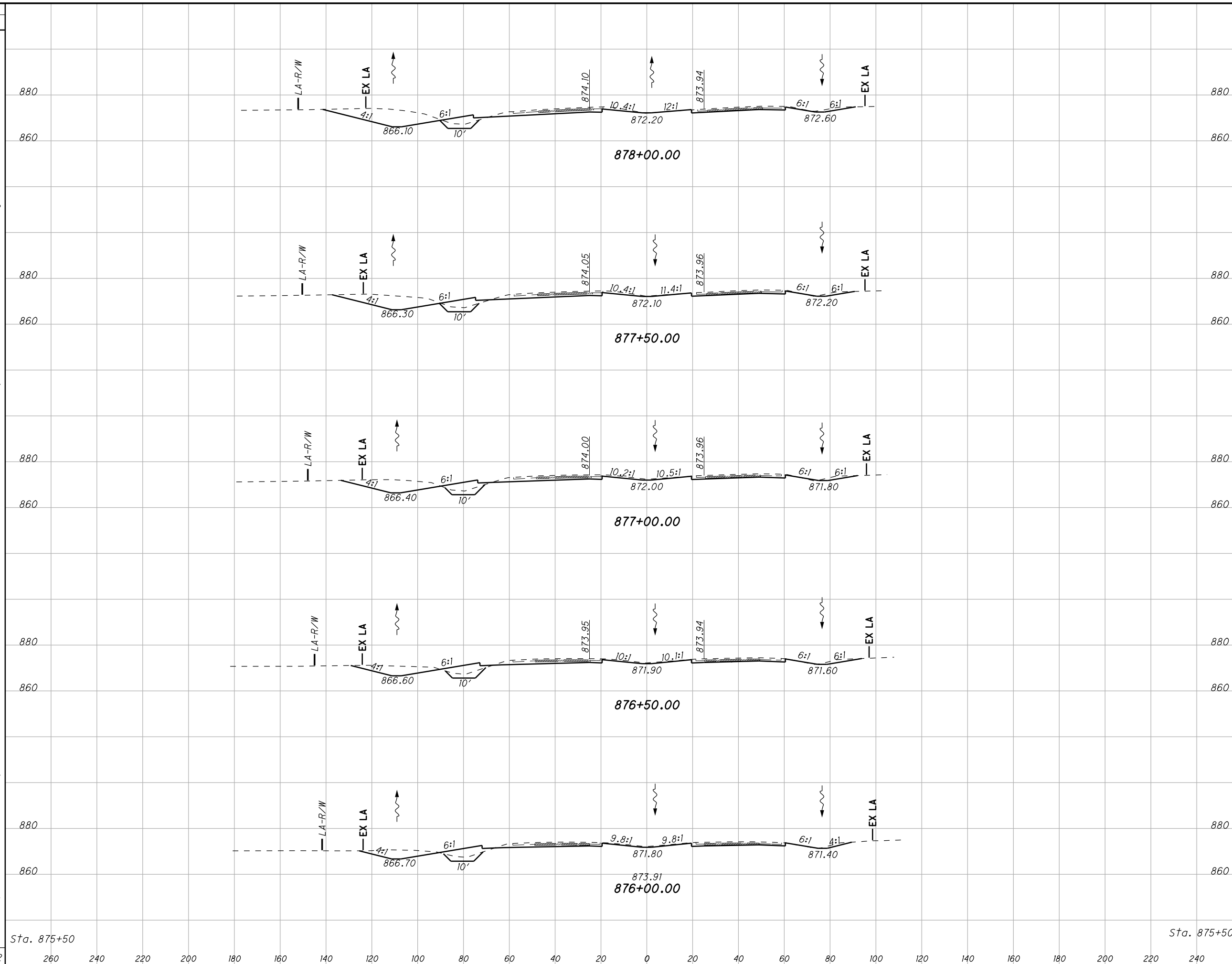
STATION RANGE			SIDE	DISTANCE (D) FT	AVERAGE WIDTH (W) FT	SURFACE AREA (A) A=DxW/9 SY	CADD GENERATED AREA SY	202	204	204	204	204	204	204	206	206	206	254	301	304	407	442	442	442	617	618
								PAVEMENT REMOVED SY	SUBGRADE COMPACTION SY	GRANULAR MATERIAL, TYPE C (12" DEPTH) CY	GEOTEXTILE FABRIC SY	GEOGRID SY	PROOF ROLLING HOUR	LIME STABILIZED SUBGRADE, 14 INCHES DEEP SY	LIME TON	CURING COAT SY	PAVEMENT PLANING, ASPHALT CONCRETE 1 1/2" DEPTH SY	ASPHALT CONCRETE BASE, PG64-22 (9"DEPTH) CY	AGGREGATE BASE (6" DEPTH) CY	NON-TRACKING TACK COAT GAL	ANTI-SEGREGATION EQUIPMENT CY	ASPHALT CONCRETE SURFACE COURSE, 12.5 MM, TYPE A (447) CY	ASPHALT CONCRETE INTERMEDIATE COURSE, 19 MM, TYPE A (448) CY	COMPACTED AGGREGATE CY	RUMBLE STRIPS, SHOULDER (ASPHALT CONCRETE) MILE	
03/IMS/PV																										
SLM 15.800	TO	SLM 16.547	NB	3944.16	38.00	16653.12																				
869+27.00		874+76.65	NB	549.65	38.00	2320.74																				
SLM 17.586		SLM 22.630	NB	26632.32	38.00	112447.57																				
SLM 15.800	TO	SLM 16.547	SB	3944.16	38.00	16653.12																				
869+27.00		874+76.65	SB	549.65	28.00	1710.02																				
SLM 17.586		SLM 22.630	SB	26632.32	38.00	112447.57																				
S.R. 696/LINCOLN HIGHWAY																										
RAMP H		ENTRANCE																								
SLM 17.586		SLM 17.715		682.97	8.63	654.89																				
Napoleon Rd																										
E		Exit					7000.00																			
F		Entrance					6625.00																			
Bentley Rd.																										
A		Entrance					6025.00																			
B		Exit					4400.00																			
C		Entrance					4100.00																			
D		Exit					6280.00																			
MEDIAN CROSSOVERS																										
871+38.00							295.00																			
951+36.00							335.00																			
0+21.43							295.00																			
BLUFFTON QUARRY TUNNEL																										
							370.00	370	370	370	370	370	370	370				92.50	61.67	40.70				15.42	17.99	
03/IMS/PV SUBTOTALS								370	370	370	370	370	370	0	0	0	0	297587	92	62	25391	8058	12442	18	2657	23.58
02/IMS/PV SUBTOTALS								60049	6971	2889	8667	0	25	45708	1456	48225	0	13059	8998	8469	3005	2120	2473	457	2.93	
01/SAF/PV SUBTOTALS								6416	2864	955	2864	0	4	5176	156	5176	0	1905	1327	1228	451	306	357	84	0.44	
TOTALS CARRIED TO GENERAL SUMMARY								66835	10205	4214	11901	370	29	50884	1612	53401	297587	15056	10387	35088	11514	14868	2848	3198	26.95	



MEDIAN CROSSOVERS FOR ASPHALT SURFACE COURSE
 STA 871+38.00
 STA 951+36.00
 S.L.M. 0+21.43
 ## - Graphically Determined Areas



SEEDING
END WIDTH SO. YDS.
152
842
151
836
150
831
149
828
149
825
148



END AREA	VOLUME	CALCULATED	
		CUT	FILL
355	74	608	143
302	80	535	152
276	84	466	159
227	88	387	165
191	90	336	169
172	92	2332	788

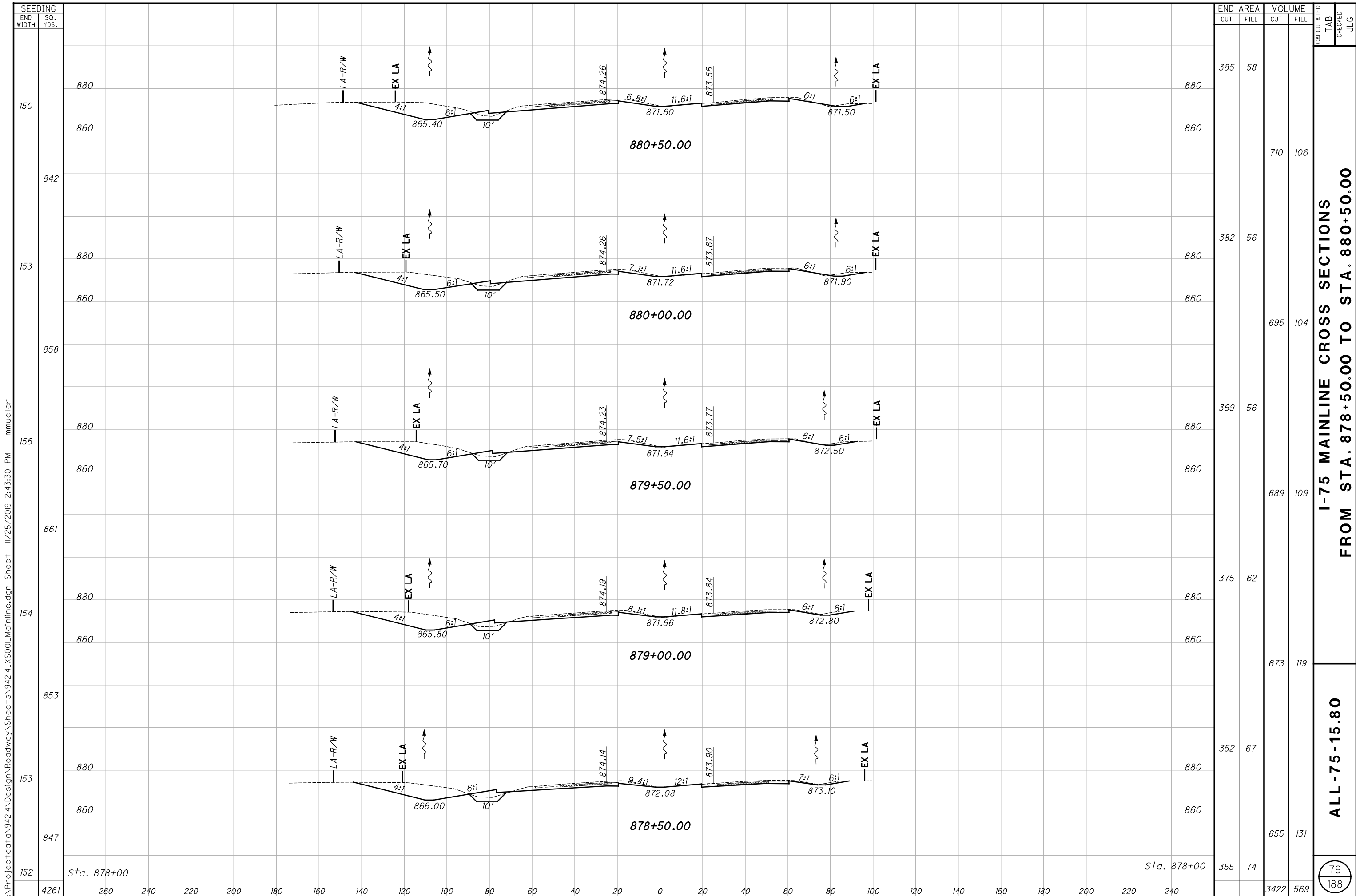
**I-75 MAINLINE CROSS SECTIONS
FROM STA. 876+00.00 TO STA. 878+00.00**

ALL - 75 - 15.80

78
188

I:\Project\data\94214\Design\Roadway\Sheets\94214_XS00_Mainline.dgn Sheet 25-NOV-2019 2:51PM mmueller

Sta. 875+50



I:\Project\data\Design\Roadway\Sheets\94214_XS00_Mainline.dgn Sheet II/25/2019 2:43:30 PM mmueller

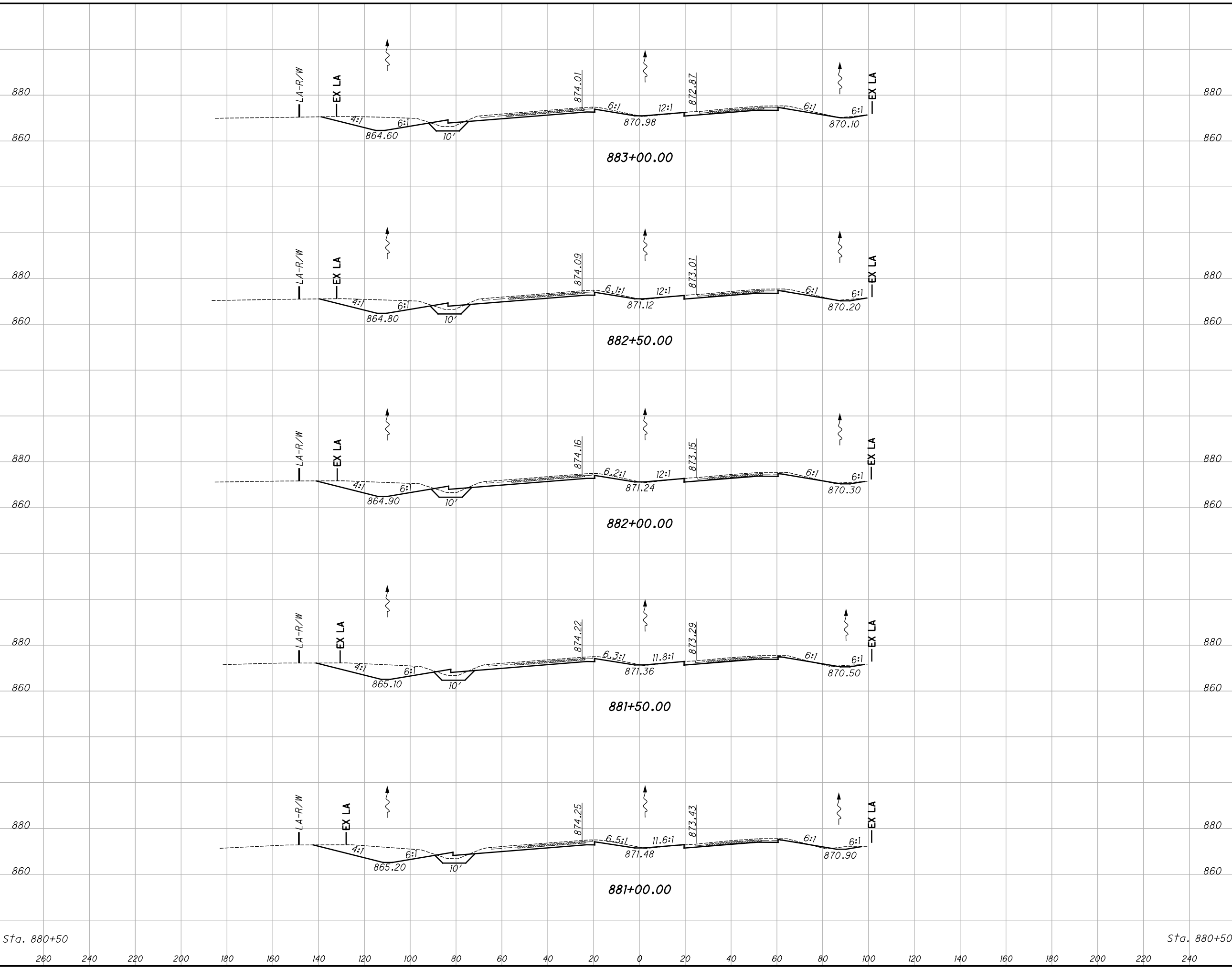
SEEDING	END AREA		VOLUME		CALCULATED TAB	CHECKED JLG
	CUT	FILL	CUT	FILL		
150	385	58				
842			710	106		
153	382	56				
858			695	104		
156	369	56				
861			689	109		
154	375	62				
853			673	119		
153	352	67				
847			655	131		
152	355	74				
Sta. 878+00			3422	569		

**I-75 MAINLINE CROSS SECTIONS
FROM STA. 878+50.00 TO STA. 880+50.00**

ALL -75-15.80

I:\Project\data\94214\Design\Roadway\Sheets\94214_XS00_Mainline.dgn Sheet 11/25/2019 2:43:32 PM mmueller

SO. YDS.	SEEDING	
	END WIDTH	SO. YDS.
150	4109	
831		
149		
825		
148		
819		
147		
817		
147		
817		
147		
880		



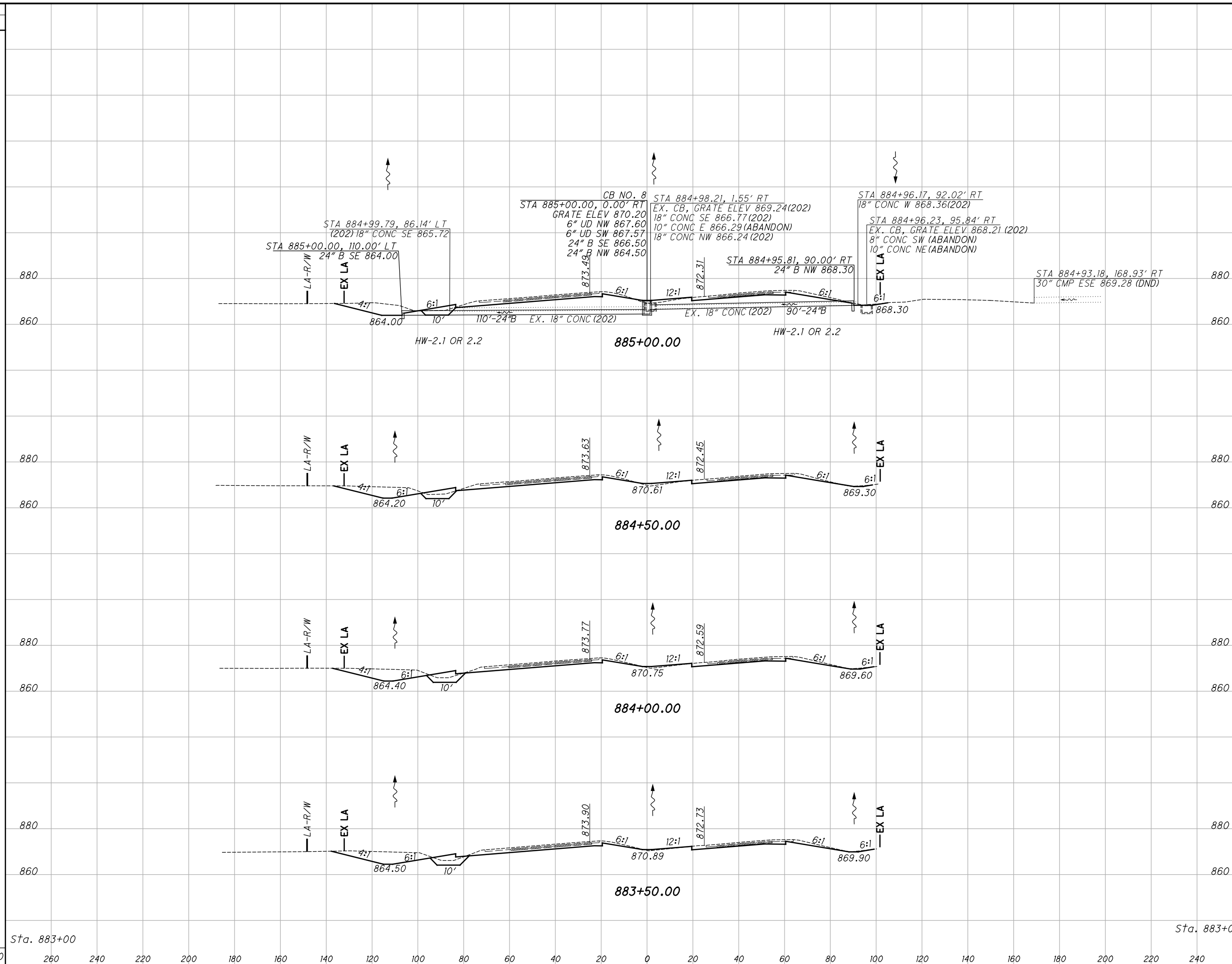
Sta.	END AREA		VOLUME		CALCULATED TAB	CHECKED JLG
	CUT	FILL	CUT	FILL		
880+50	385	58				
			318	60		
					596	111
					326	60
					617	113
					340	62
					633	117
					344	64
					656	118
					364	63
					694	112
					3196	571

I-75 MAINLINE CROSS SECTIONS
FROM STA. 881+00.00 TO STA. 883+00.00

ALL -75-15.80

(80)
188

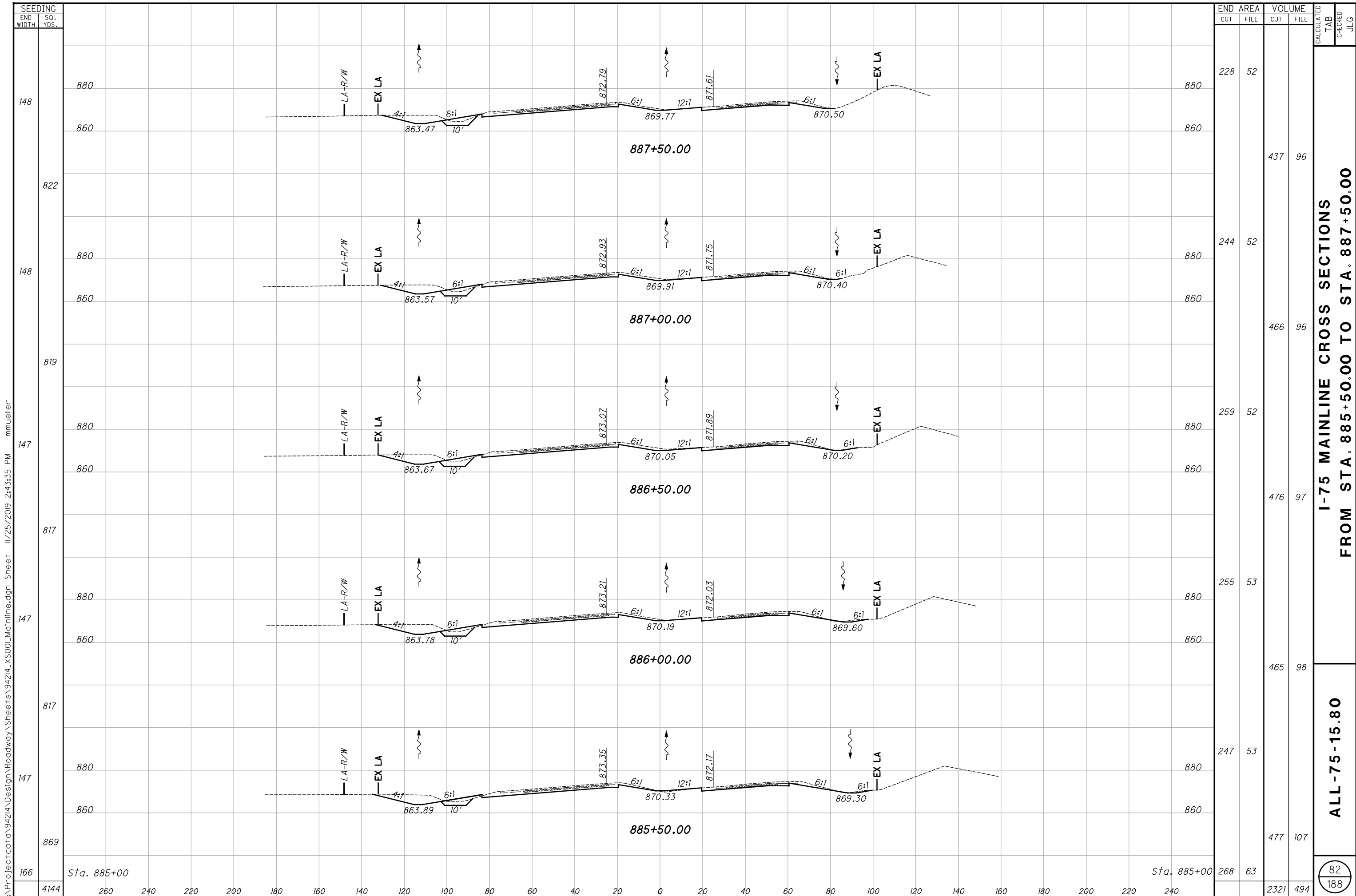
SEEDING
 END SO.
 WIDTH YDS.
 166
 147
 147
 147
 3320



END AREA	VOLUME		CALCULATED TAB	CHECKED JLG
	CUT	FILL		
268	63			
264	62	493	116	
287	66	510	119	
299	63	543	119	
318	60	571	114	
		2117	468	

I-75 MAINLINE CROSS SECTIONS
FROM STA. 883+50.00 TO STA. 885+00.00
ALL -75-15.80
 81
 188

I:\Project\4214\Design\Roadway\Sheets\94214_XS00_Mainline.dgn Sheet 11/25/2019 2:43:33 PM mmueller



I:\Project\4214\Design\Roadway\Sheets\94214_XS00_Mainline.dgn Sheet II/25/2019 2:43:35 PM mmueller

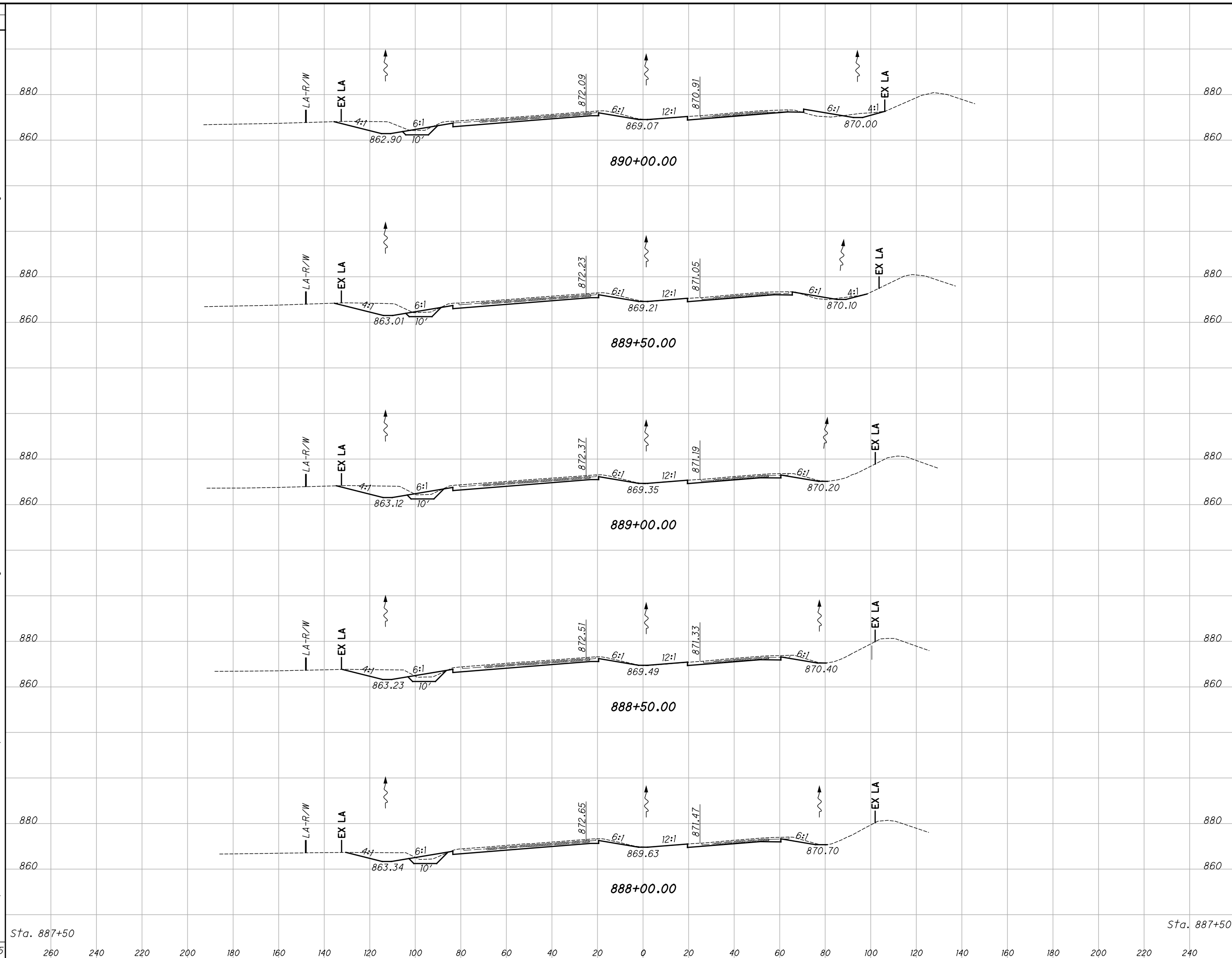
SEEDING	
END WIDTH	SO. YDS.
148	
822	
148	
819	
147	
817	
147	
817	
147	
869	
166	

END STA.	AREA		VOLUME		CALCULATED TAB	CHECKED JLG
	CUT	FILL	CUT	FILL		
887+50.00	228	52	437	96		
887+00.00	244	52	466	96		
886+50.00	259	52	476	97		
886+00.00	255	53	465	98		
885+50.00	247	53	477	107		
Sta. 885+00	268	63	2321	494		

**I-75 MAINLINE CROSS SECTIONS
FROM STA. 885+50.00 TO STA. 887+50.00**

ALL -75-15.80

SEEDING
 END SO.
 WIDTH YDS.
 4075
 141
 792
 144
 811
 148
 822
 148
 825
 149
 825
 148
 Sta. 887+50
 260 240 220 200 180 160 140 120 100 80 60 40 20 0 20 40 60 80 100 120 140 160 180 200 220 240

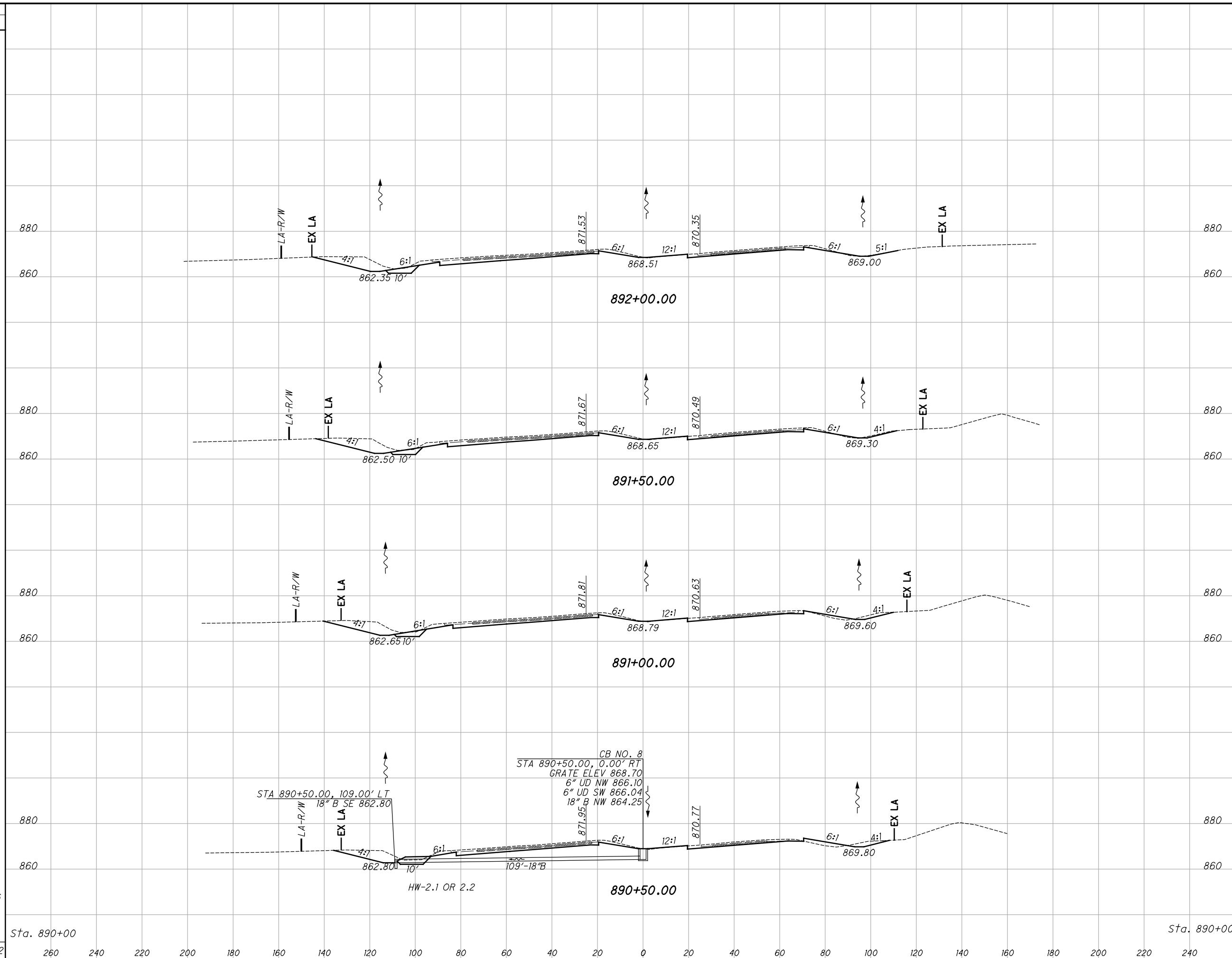


END STA.	END AREA		VOLUME	
	CUT	FILL	CUT	FILL
890+00.00	249	62	454	102
889+50.00	241	48	451	83
889+00.00	246	42	437	85
888+50.00	226	50	408	93
888+00.00	215	50	410	94
Sta. 887+50	228	52	2160	457

CALCULATED
 TAB
 CHECKED
 JLG
I-75 MAINLINE CROSS SECTIONS
FROM STA. 888+00.00 TO STA. 890+00.00
ALL -75-15.80
 83
 188

I:\Project\94214\Design\Roadway\Sheets\94214_XS00_Mainline.dgn Sheet 11/25/2019 2:43:36 PM mmueller

SEEDING
END SO.
WIDTH YDS.
172
931
163
898
156
847
149
806
141

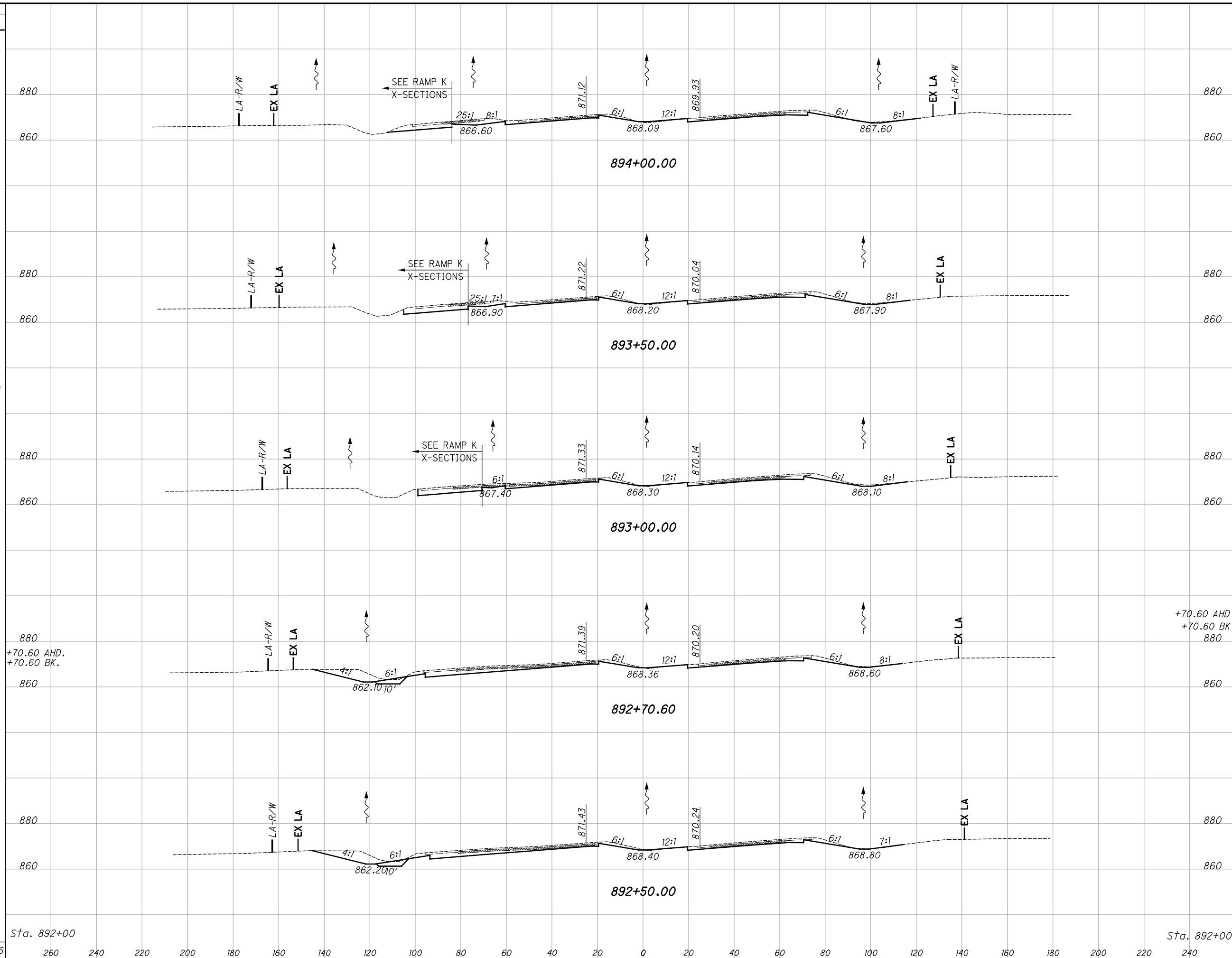


END AREA		VOLUME		CALCULATED TAB	CHECKED JLG
CUT	FILL	CUT	FILL		
268	34	496	61		
268	32	481	69		
251	43	447	106		
232	71	445	123		
249	62	1869	359		

I-75 MAINLINE CROSS SECTIONS
FROM STA. 890+50.00 TO STA. 892+00.00
ALL -75-15.80

I:\Project\data\Design\Roadway\Sheets\94214_XS00_Mainline.dgn Sheet 11/25/2019 2:43:37 PM mmueller

SEEDING
END WIDTH SO. YDS.
128
678
116
642
115
364
108
178
411
181
981
172



END AREA	VOLUME	
	CUT	FILL
111	10	
	210	16
116	7	
	202	12
102	6	
	112	7
104	6	
262	29	
880		
	201	23
264	31	
	493	60
268	34	
	1218	118

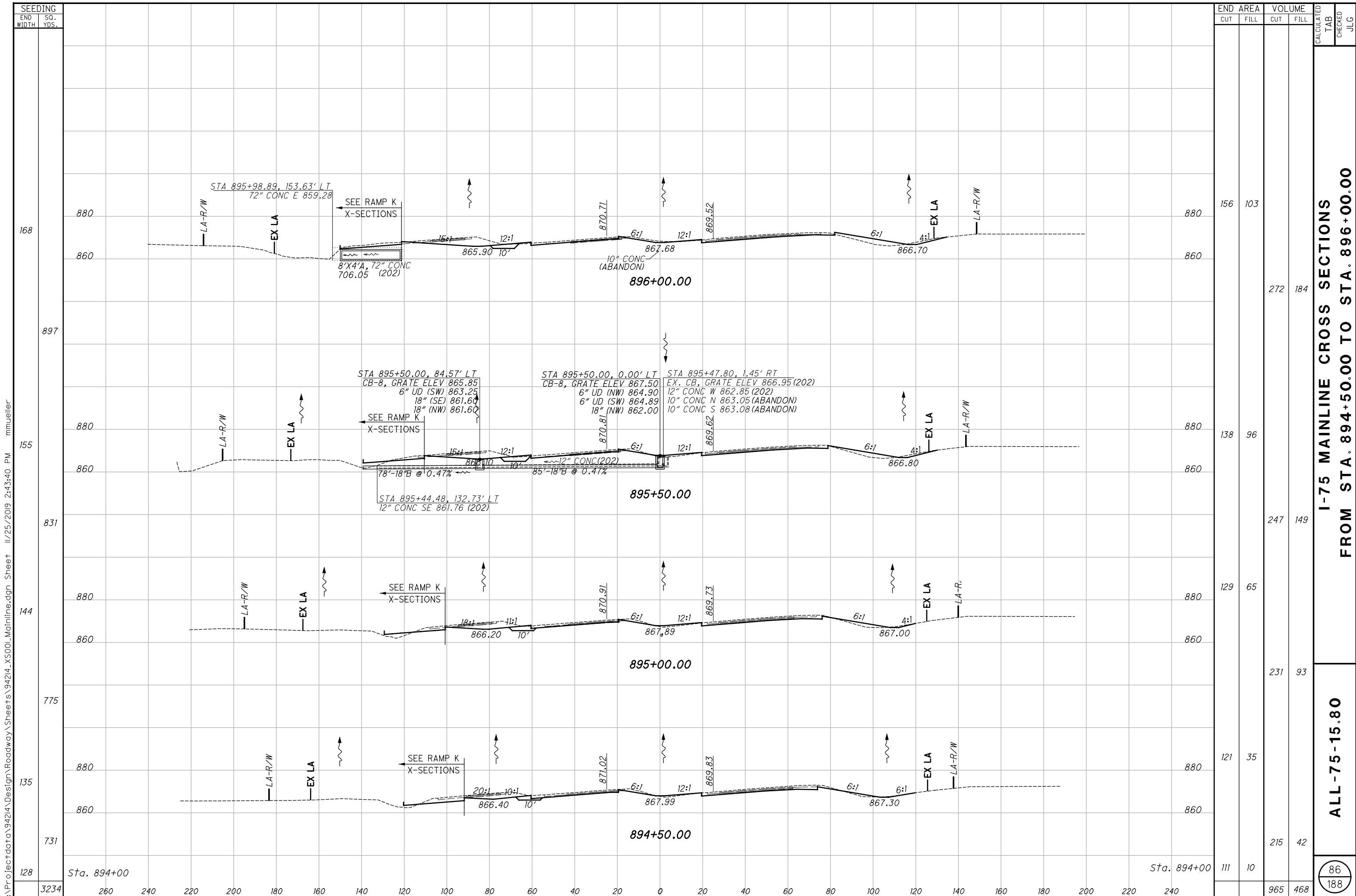
CALCULATED
TAB
CHECKED
JLG

**I-75 MAINLINE CROSS SECTIONS
FROM STA. 892+50.00 TO STA. 894+00.00**

ALL -75-15.80

85
188

I:\Project\data\94214\Design\Roadway\Sheets\94214_XS00_Mainline.dgn Sheet 11/25/2019 2:43:39 PM mmueller



I:\Project\94214\Design\Roadway\Sheets\94214_XS00_Mainline.dgn Sheet II/25/2019 2:43:40 PM mmueller

SEEDING	END AREA		VOLUME	
	CUT	FILL	CUT	FILL
168	156	103	272	184
897	138	96	247	149
155	129	65	231	93
831	121	35	215	42
144	111	10	965	468
775				
135				
731				
128				

CALCULATED	TAB	CHECKED	JLG

**I-75 MAINLINE CROSS SECTIONS
FROM STA. 894+50.00 TO STA. 896+00.00**

ALL -75-15.80

86
188

SEEDING
END SO.
WIDTH YDS.

155
253

707

217

1153

198

1056

182

972

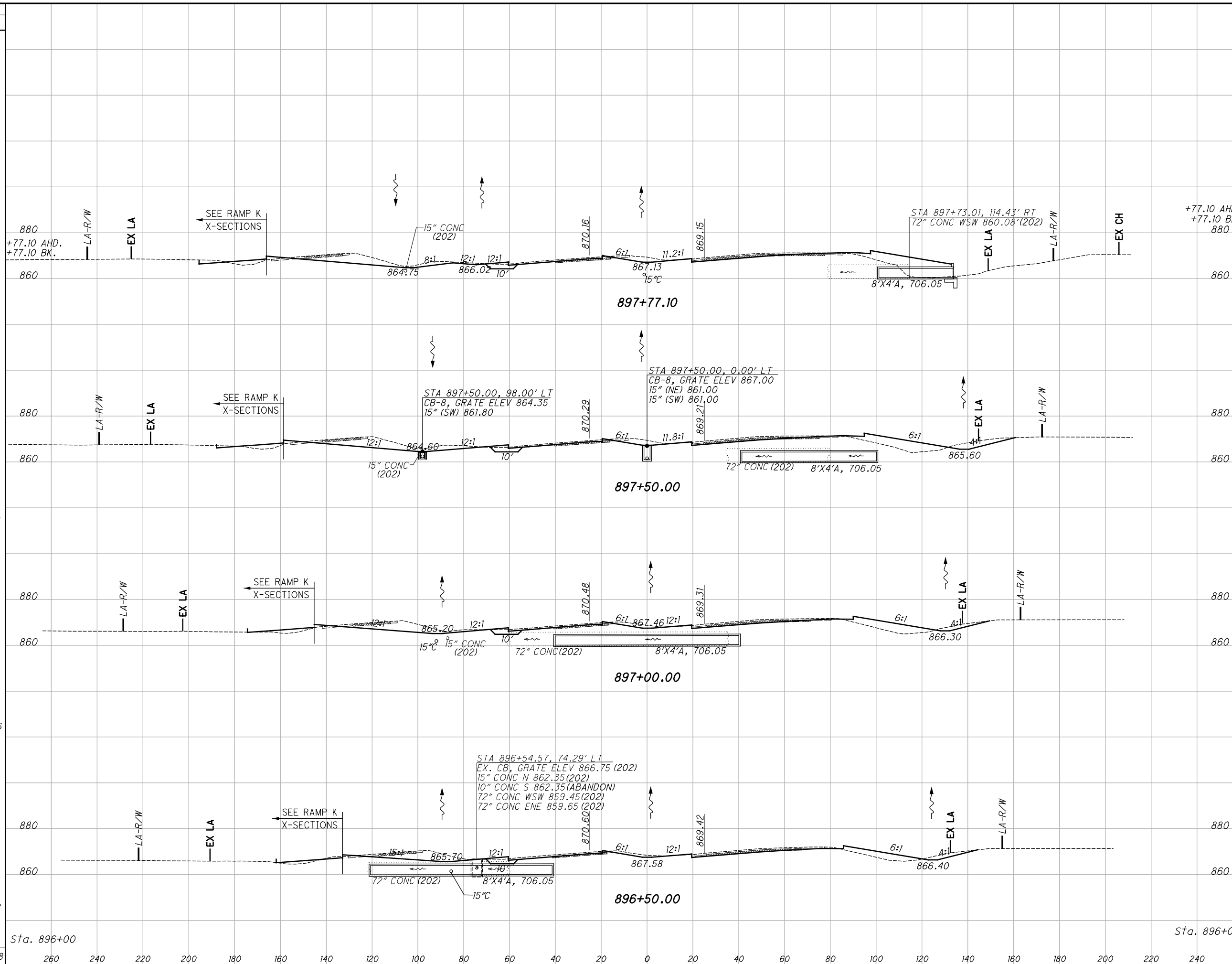
168

Sta. 896+00

3888

260 240 220 200 180 160 140 120 100 80 60 40 20 0 20 40 60 80 100 120 140 160 180 200 220 240

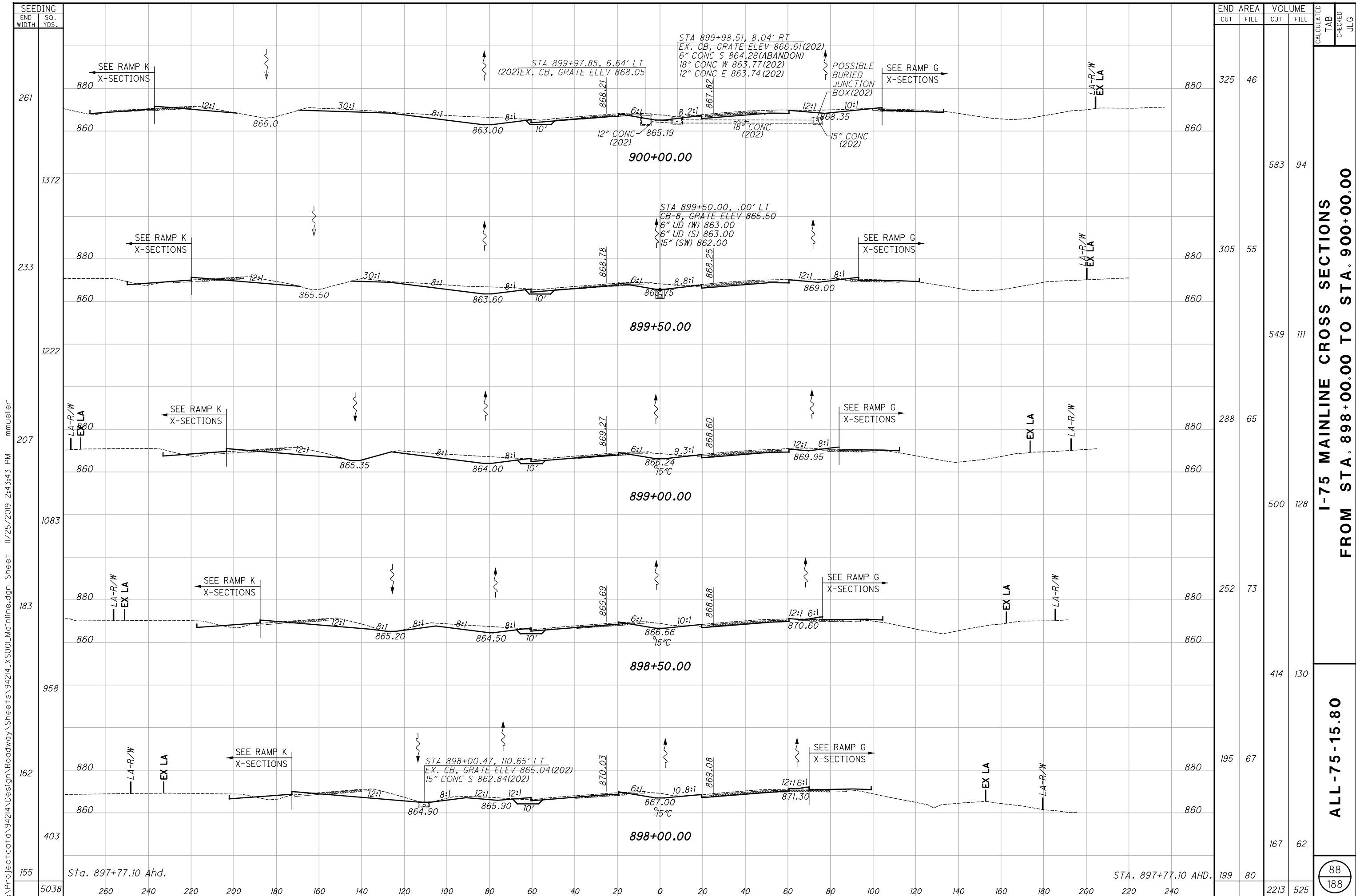
Project: data\94214\Design\Roadway\Sheets\94214_XS00_Mainline.dgn Sheet 11/25/2019 2:43:42 PM mmueller



END AREA	VOLUME		CALCULATED TAB	CHECKED JLG
	CUT	FILL		
199	80	190		
199	80	190		
275	203			
349	215			
502	361			
193	175			
338	282			
172	130			
304	216			
156	103			
1419	1062			

I-75 MAINLINE CROSS SECTIONS
FROM STA. 896+50.00 TO STA. 897+77.10

87
188

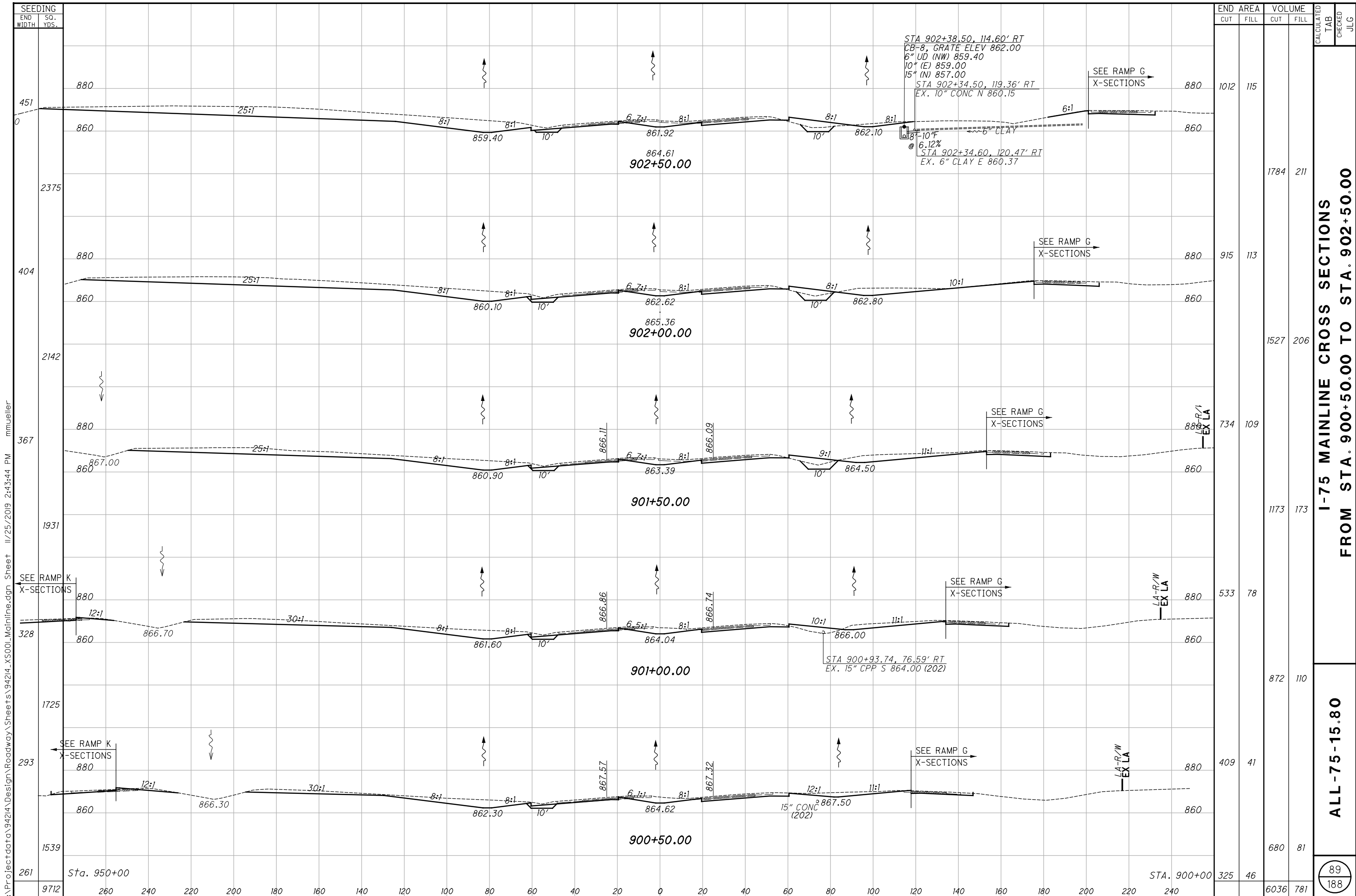


I:\Project\data\94214\Design\Roadway\Sheets\94214_XS00_Mainline.dgn Sheet 11/25/2019 2:43:43 PM mmueller

END STA	END AREA		VOLUME		CALCULATED TAB	CHECKED JLG
	CUT	FILL	CUT	FILL		
880	325	46				
860			583	94		
880	305	55				
860			549	111		
880	288	65				
860			500	128		
880	252	73				
860			414	130		
880	195	67				
860			167	62		
880	199	80				
860			2213	525		

**I-75 MAINLINE CROSS SECTIONS
FROM STA. 898+00.00 TO STA. 900+00.00**

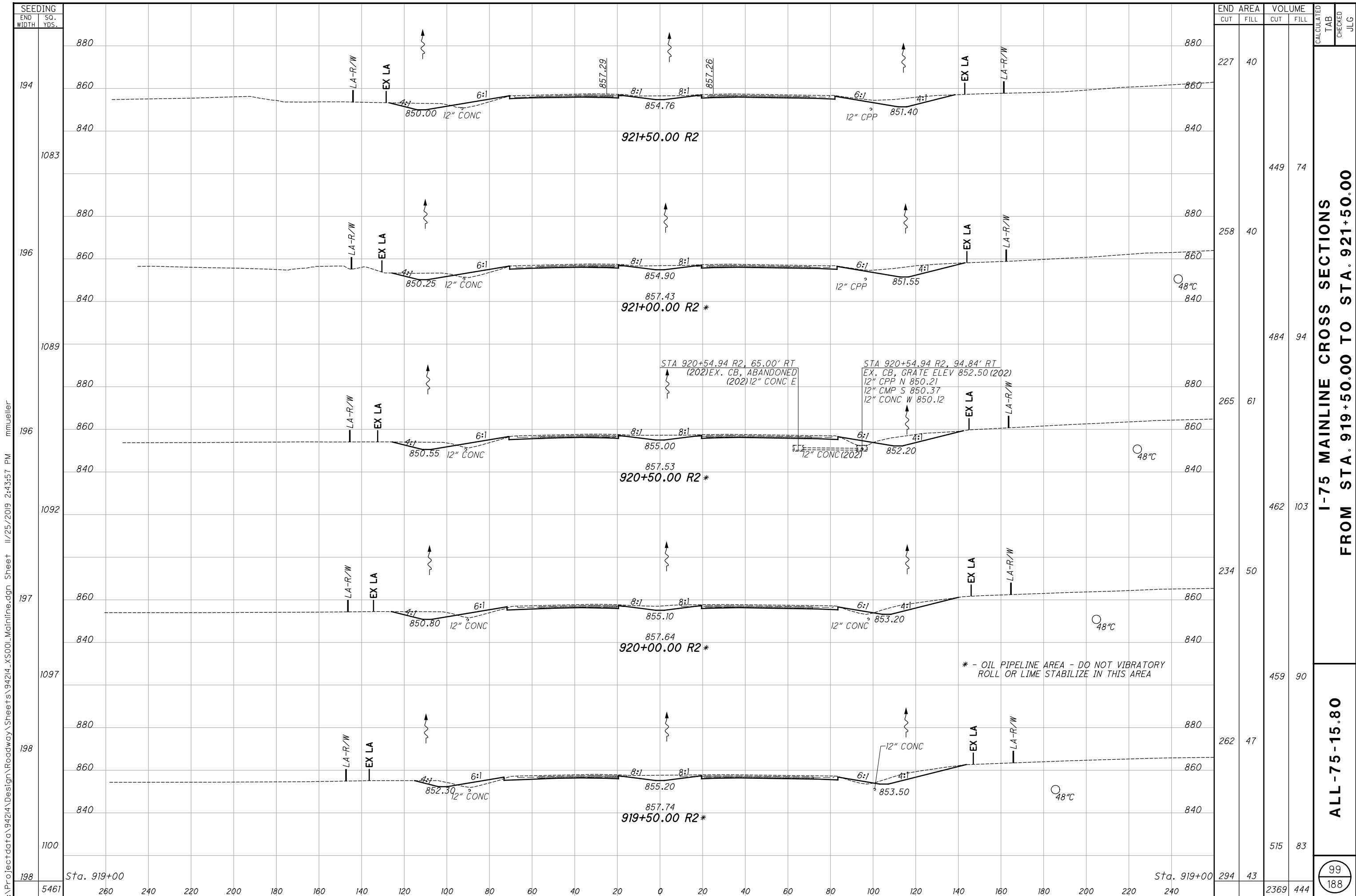
ALL -75-15.80



**I-75 MAINLINE CROSS SECTIONS
FROM STA. 900+50.00 TO STA. 902+50.00**

ALL -75-15.80

I:\Project\data\94214\Design\Roadway\Sheets\94214_XS00_Mainline.dgn Sheet 11/25/2019 2:43:44 PM mmueller



SEEDING	END	
	WIDTH	SO. YDS.
194	260	240
1083	240	220
196	240	220
1089	220	200
196	220	200
1092	200	180
197	180	160
1097	160	140
198	140	120
1100	120	100
198	100	80
5461	80	60
	60	40
	40	20
	20	0
	0	20
	20	40
	40	60
	60	80
	80	100
	100	120
	120	140
	140	160
	160	180
	180	200
	200	220
	220	240

END AREA	VOLUME		CALCULATED TAB	CHECKED JLG
	CUT	FILL		
227	40			
258	40			
265	61			
234	50			
262	47			
294	43			
2369	444			

I-75 MAINLINE CROSS SECTIONS FROM STA. 919+50.00 TO STA. 921+50.00

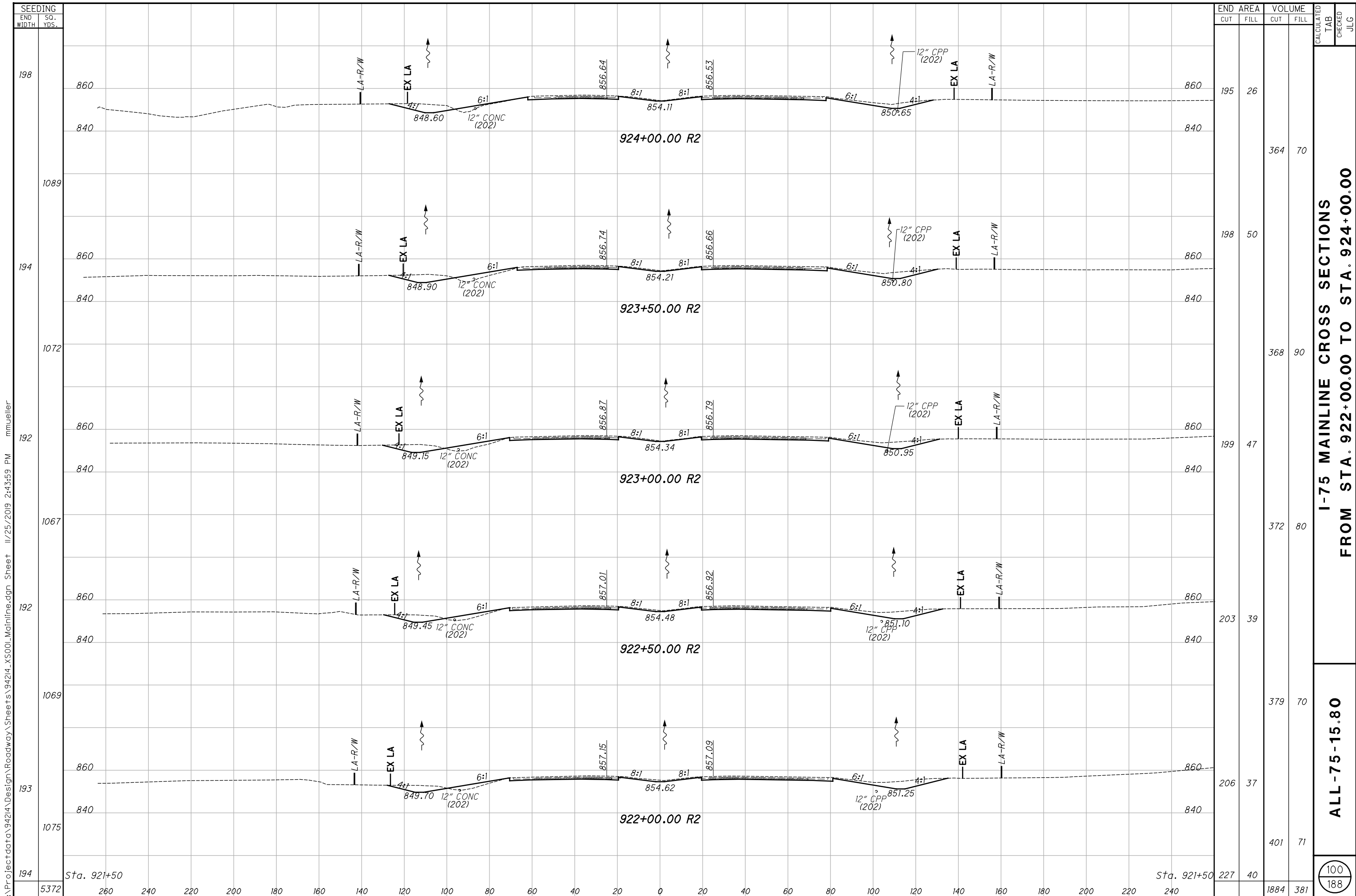
ALL -75-15.80

I:\Project\data\94214\Design\Roadway\Sheets\94214_XS00_Mainline.dgn Sheet 11/25/2019 2:43:57 PM mmueller

* - OIL PIPELINE AREA - DO NOT VIBRATORY ROLL OR LIME STABILIZE IN THIS AREA

STA 920+54.94 R2, 65.00' RT
(202) EX. CB, ABANDONED
(202) 12" CONC E

STA 920+54.94 R2, 94.84' RT
EX. CB, GRATE ELEV 852.50 (202)
12" CPP N 850.21
12" CMP S 850.37
12" CONC W 850.12



I:\Project\data\94214\Design\Roadway\Sheets\94214_XS00_Mainline.dgn Sheet II/25/2019 2:43:59 PM mmueller

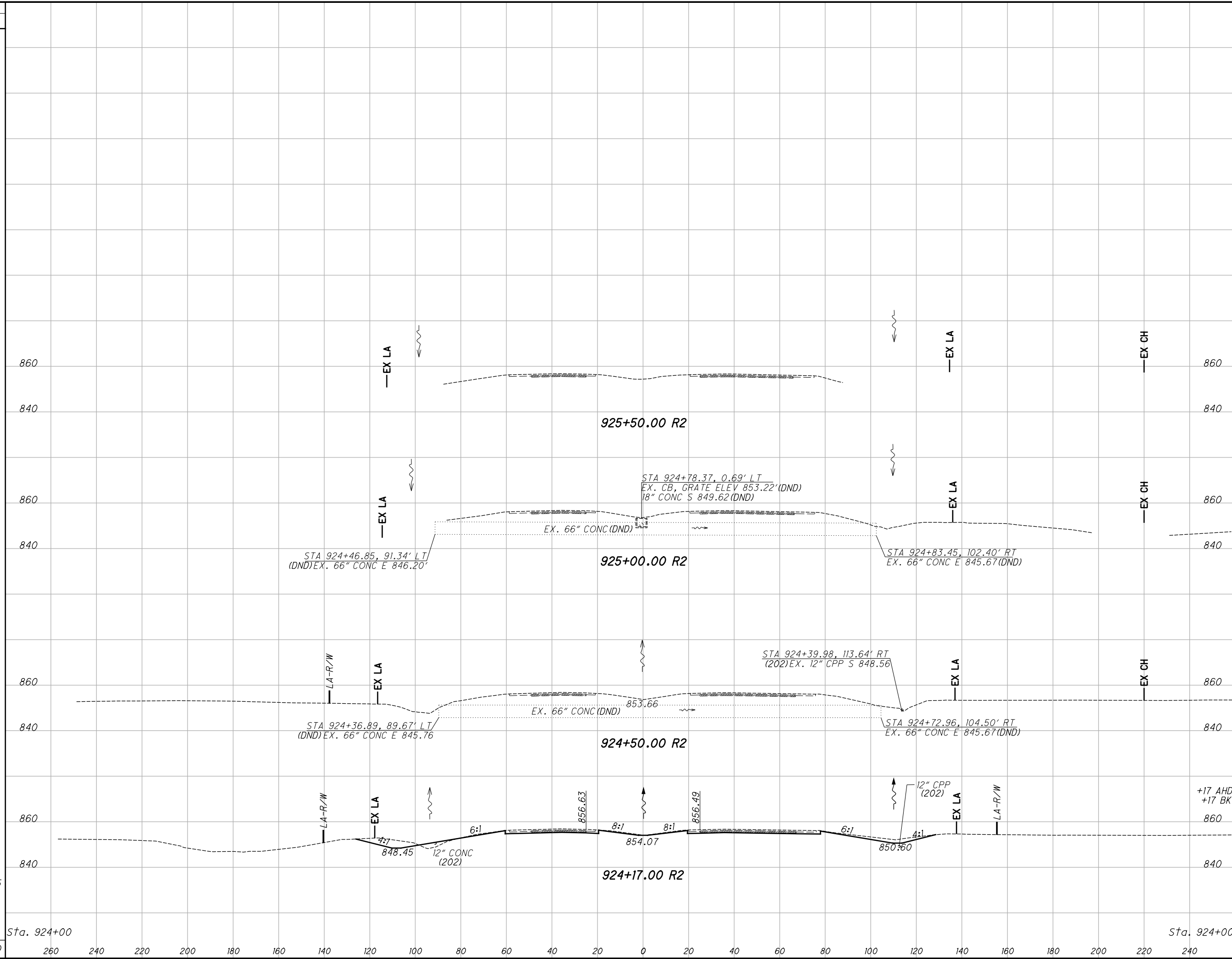
END STA.	AREA		VOLUME		CALCULATED TAB	CHECKED JLG
	CUT	FILL	CUT	FILL		
924+00.00	195	26	364	70		
923+50.00	198	50	368	90		
923+00.00	199	47	372	80		
922+50.00	203	39	379	70		
922+00.00	206	37	401	71		
Sta. 921+50	227	40	1884	381		

**I-75 MAINLINE CROSS SECTIONS
FROM STA. 922+00.00 TO STA. 924+00.00**

ALL -75-15.80

100
188

SEEDING
 END SO.
 WIDTH YDS.
 740
 198
 375
 199
 365
 840
 860
 0
 840
 860
 0
 840
 860
 0
 840
 860
 0
 840
 860
 0



END AREA		VOLUME		CALCULATED TAB	CHECKED JLG
CUT	FILL	CUT	FILL		
195	26	126	20		
193	27	172	23		
		77	12		
		116	15		

I-75 MAINLINE CROSS SECTIONS
 FROM STA. 924+17.00 TO STA. 925+50.00

ALL -75-15.80

101
 188

I:\Project\data\94214\Design\Roadway\Sheets\94214_XS00_Mainline.dgn Sheet II/25/2019 2:44:00 PM mmueller