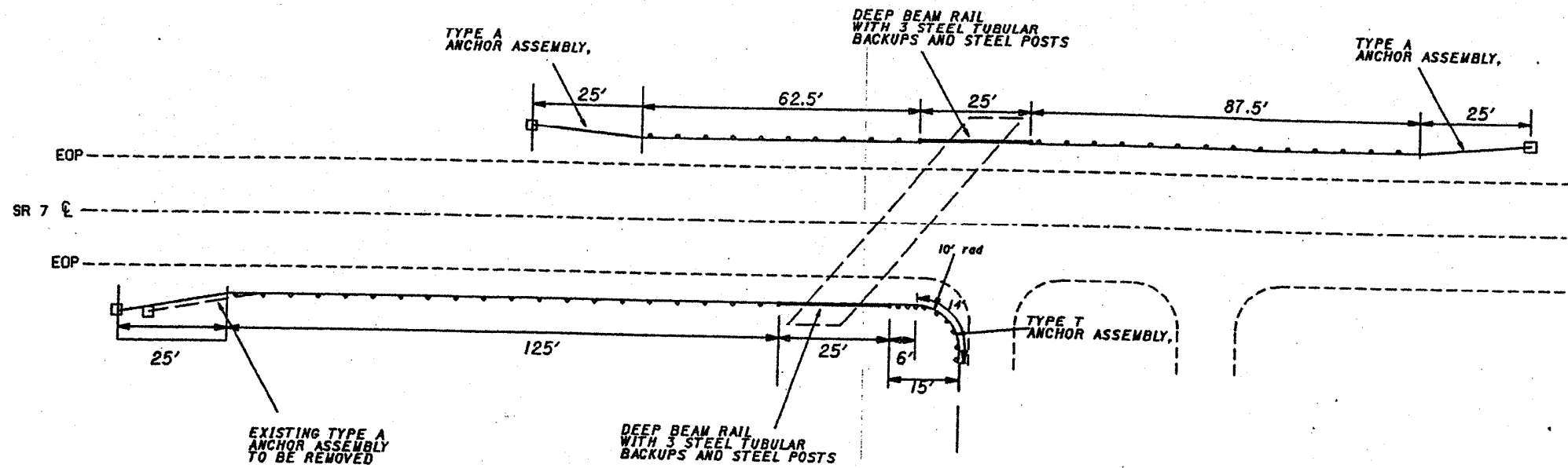


GUARDRAIL INSTALLATION AT STRUCTURE ATB - 7 - 1865



ITEM	DESCRIPTION	UNIT	QUANTITY
202	GUARDRAIL REMOVED	LIN FT	363
202	BRIDGE RAILING REMOVED	LIN FT	50
517	RAILING (DEEP BEAM RAIL WITH 3 STEEL TUBULAR BACKUPS AND STEEL POSTS)	LIN FT	50
606	ANCHOR ASSEMBLY, TYPE A	EACH	3
606	ANCHOR ASSEMBLY, TYPE T	EACH	1
606	GUARDRAIL, TYPE 5	LIN FT	281
606	BRIDGE TERMINAL ASSEMBLY, TYPE 4, AS PER PLAN	EACH	4

THE EXISTING GUARDRAIL IS TO BE REMOVED.

GUARDRAIL AND BRIDGE RAILING REMOVAL SHALL BE PERFORMED PER CMS ITEM 202.

SEE CONSTRUCTION DRAWING GR 21, 5-6-91 FOR GUARDRAIL INSTALLATION.

ANCHOR ASSEMBLY, TYPE A SHALL BE INSTALLED PER CONSTRUCTION DRAWING GR-41, 5-6-91 FOR SINGLE RAIL

ANCHOR ASSEMBLY, TYPE T SHALL BE INSTALLED PER CONSTRUCTION DRAWING GR-42, 5-6-91 FOR DRIVEWAY OPENING.

BRIDGE TERMINAL ASSEMBLY, TYPE 4 SHALL BE PER GR-3.4, 5-6-91.

SEE GUARDRAIL SPANNING STRUCTURE PAGE FOR DEEP BEAM RAIL DETAILS.

GEP 6/96 A0071865GR

CHECKED  
DATE

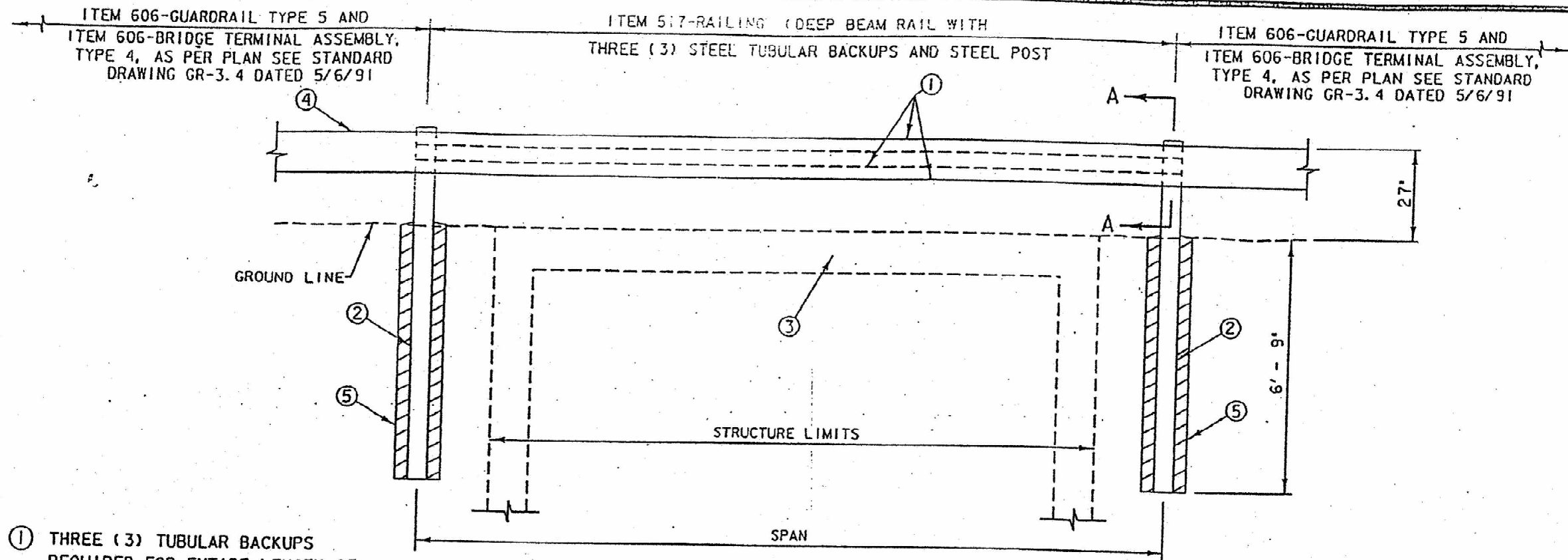
GUARDRAIL INSTALLATION ATB-7-1865

ATB-7-18.47



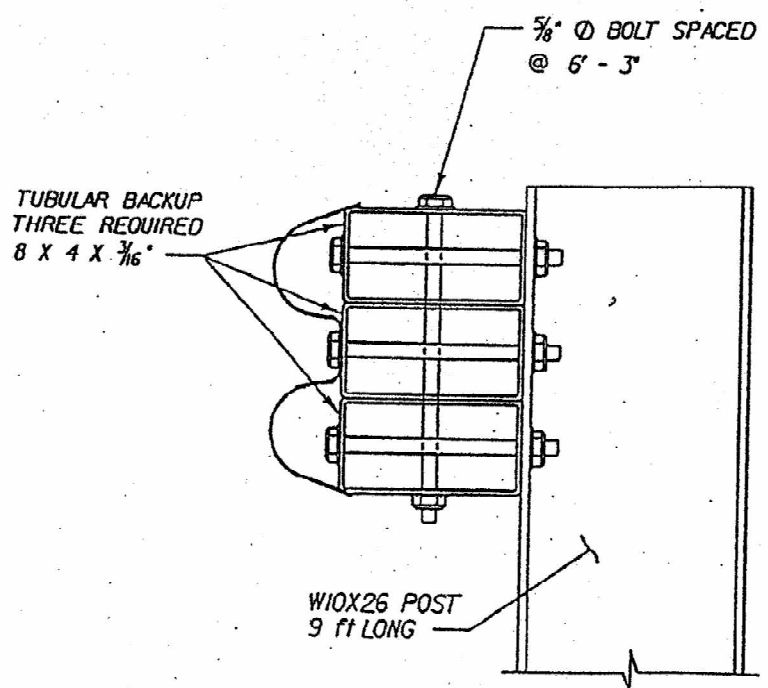
NOT TO SCALE

PLAN NO.



- ① THREE (3) TUBULAR BACKUPS REQUIRED FOR ENTIRE LENGTH OF SPAN 8 X 4 X  $\frac{3}{16}$ "
- ② STEEL POSTS - 9 FT. LENGTH SET POSTS EQUAL DISTANCE FROM CENTER OF STRUCTURE
- ③ STRUCTURE, CONCRETE HEADWALL OR CONCRETE OBSTACLE
- ④ DEEP BEAM RAIL
- ⑤ CONCRETE ENCASEMENT, 4" MIN.

SPAN (ft)	TUBE SIZE
18-25	8 X 4 X $\frac{3}{16}$ "



SECTION A - A

NOTES

ITEM 517 - RAILING (DEEP BEAM RAIL WITH THREE (3) STEEL TUBULAR BACKUPS AND STEEL POSTS), PAYMENT SHALL BE THE LENGTH BETWEEN THE TWO 9 FOOT POSTS.

THE DEEP BEAM RAIL SHALL BE BOLTED TO THE TUBULAR BACKUP @ 6' - 3" C/C USING STANDARD DEEP BEAM RAIL BOLTS  $\frac{5}{8}$ " X 10" LONG WITH SPECIAL WASHERS.

FOR DETAILS NOT SHOWN SEE STANDARD DRAWING DBR-2-73

DJ-GR-03		10-29-91	
<b>GUARDRAIL SPANNING STRUCTURE</b>			
DESIGN 3		P=12.5 KIPS	
D.O.D.T. DISTRICT THREE BRIDGE DEPARTMENT			
DESIGNED	DRAWN	CHECKED	REVIEWED DATE
	<i>[Signature]</i>		

DESIGN FILE: D3GR03.S10

DETAIL OF GUARDRAIL SPANNING STRUCTURE

ATB-7-18.47

