

CALCULATED  
CHECKED

FENCE PLAN  
STA. 39+300 TO STA. 40+000

ATH-33-40.981

681  
949

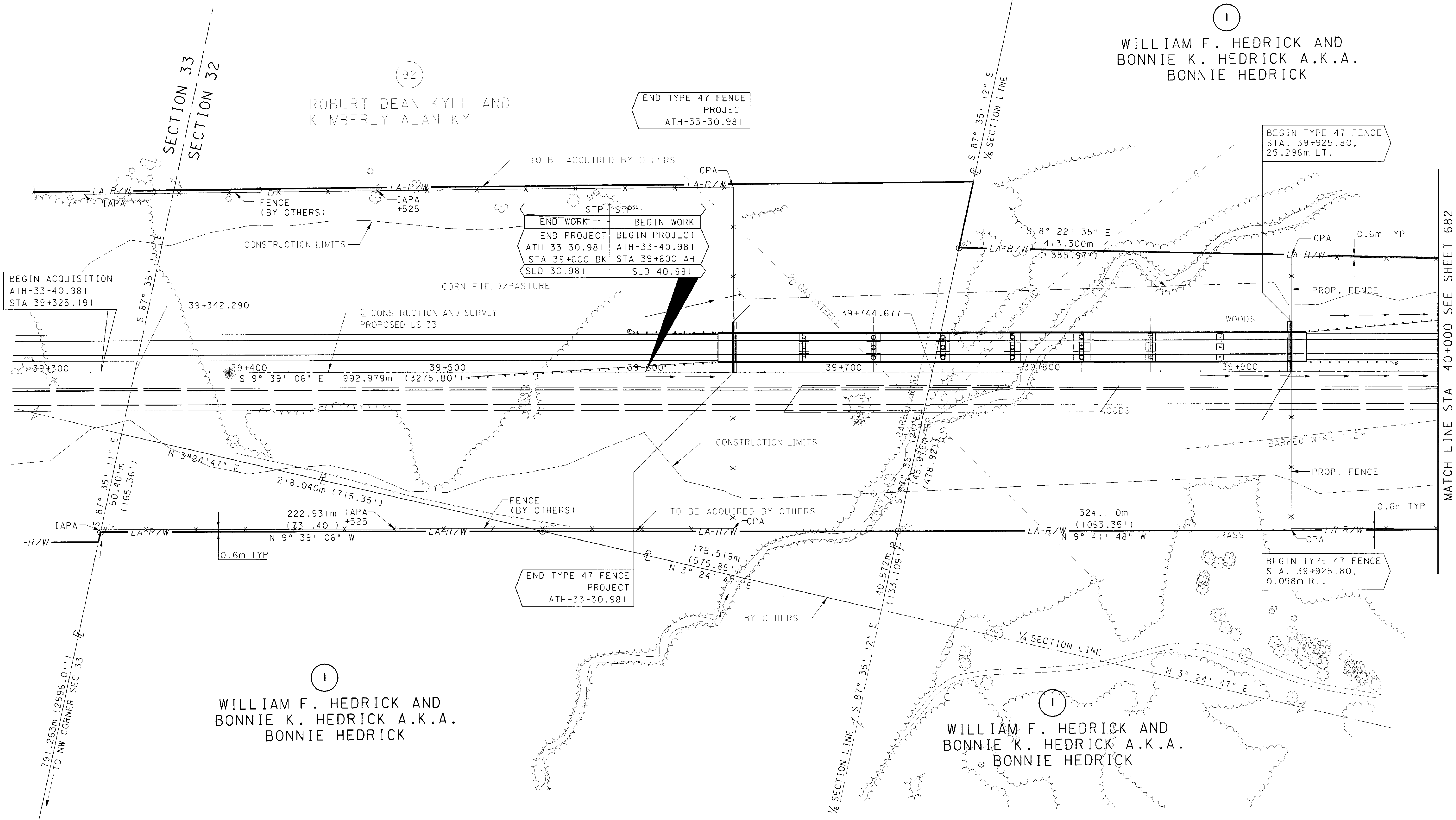
①  
WILLIAM F. HEDRICK AND  
BONNIE K. HEDRICK A.K.A.  
BONNIE HEDRICK

②  
ROBERT DEAN KYLE AND  
KIMBERLY ALAN KYLE

①  
WILLIAM F. HEDRICK AND  
BONNIE K. HEDRICK A.K.A.  
BONNIE HEDRICK

①  
WILLIAM F. HEDRICK AND  
BONNIE K. HEDRICK A.K.A.  
BONNIE HEDRICK

END WORK	STP	STP	BEGIN WORK
ATH-33-30.981			ATH-33-40.981
STA 39+600 BK			STA 39+600 AH
SLD 30.981			SLD 40.981



NOTE: CPA = CORNER POST ASSEMBLY.  
EPA = END POST ASSEMBLY.  
IAPA = INTERMEDIATE ANCHOR  
POST ASSEMBLY

NOTE: ⊙s. DENOTES 3/4" x 30" LONG  
IRON PIPE SET WITH CENTER  
PUNCHED ALUMINUM CAP STAMPED  
'0DOT R/W - S6950'

02/07/01 PM  
05:06:40  
m:\prj\01382\1016-00\dsc\1016r\p01.dgn



SCALE IN METERS  
HORIZONTAL

CALCULATED  
CHECKED

FENCE PLAN  
STA. 40+000 TO STA. 40+700

ATH-33-40.981

682  
949

NOTE:  $\odot$  P.S. DENOTES  $\frac{3}{4}$ " x 30" LONG  
IRON PIPE SET WITH CENTER  
PUNCHED ALUMINUM CAP STAMPED  
'ODOT R/W - S6950'

CURVE DATA CR 68  
P.I. Sta. = 2+081.405  
 $\Delta$  = 19° 10' 22" (RT)  
R = 50.000 m  
T = 8.445 m  
M = 16.431 m  
E = 0.708 m

HARRIET MEEKS A.K.A.  
HARRIET J. MEEKS

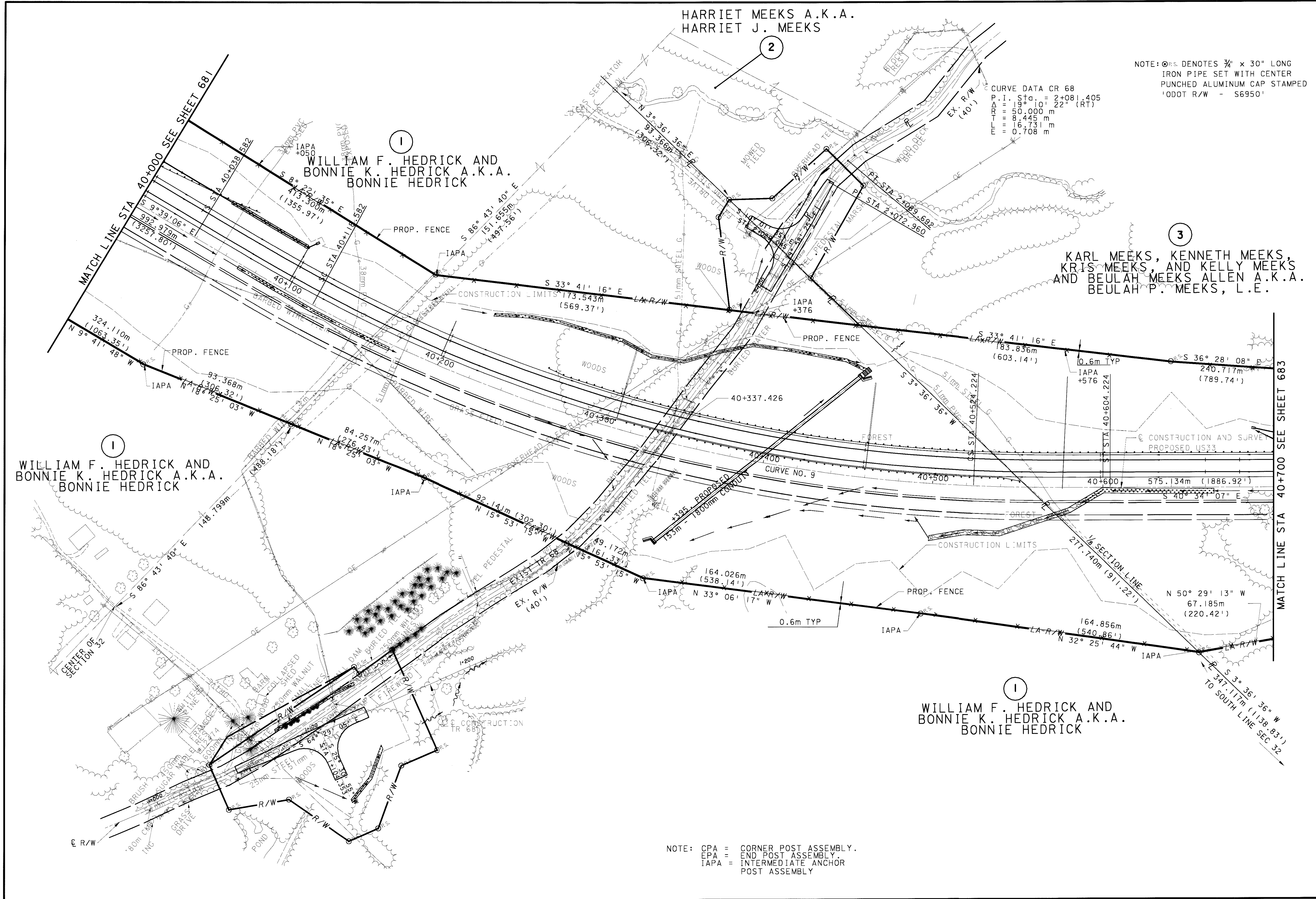
WILLIAM F. HEDRICK AND  
BONNIE K. HEDRICK A.K.A.  
BONNIE HEDRICK

KARL MEEKS, KENNETH MEEKS,  
KRIS MEEKS, AND KELLY MEEKS  
AND BEULAH MEEKS ALLEN A.K.A.  
BEULAH P. MEEKS, L.E.

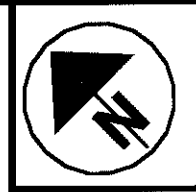
WILLIAM F. HEDRICK AND  
BONNIE K. HEDRICK A.K.A.  
BONNIE HEDRICK

WILLIAM F. HEDRICK AND  
BONNIE K. HEDRICK A.K.A.  
BONNIE HEDRICK

NOTE: CPA = CORNER POST ASSEMBLY.  
EPA = END POST ASSEMBLY.  
IAPA = INTERMEDIATE ANCHOR  
POST ASSEMBLY



02/07/01  
05:06:55 PM  
m:\p\p\1982\1016-00\dsl\docs\1016r-p02.dgn



0 20 40  
HORIZONTAL  
SCALE IN METERS

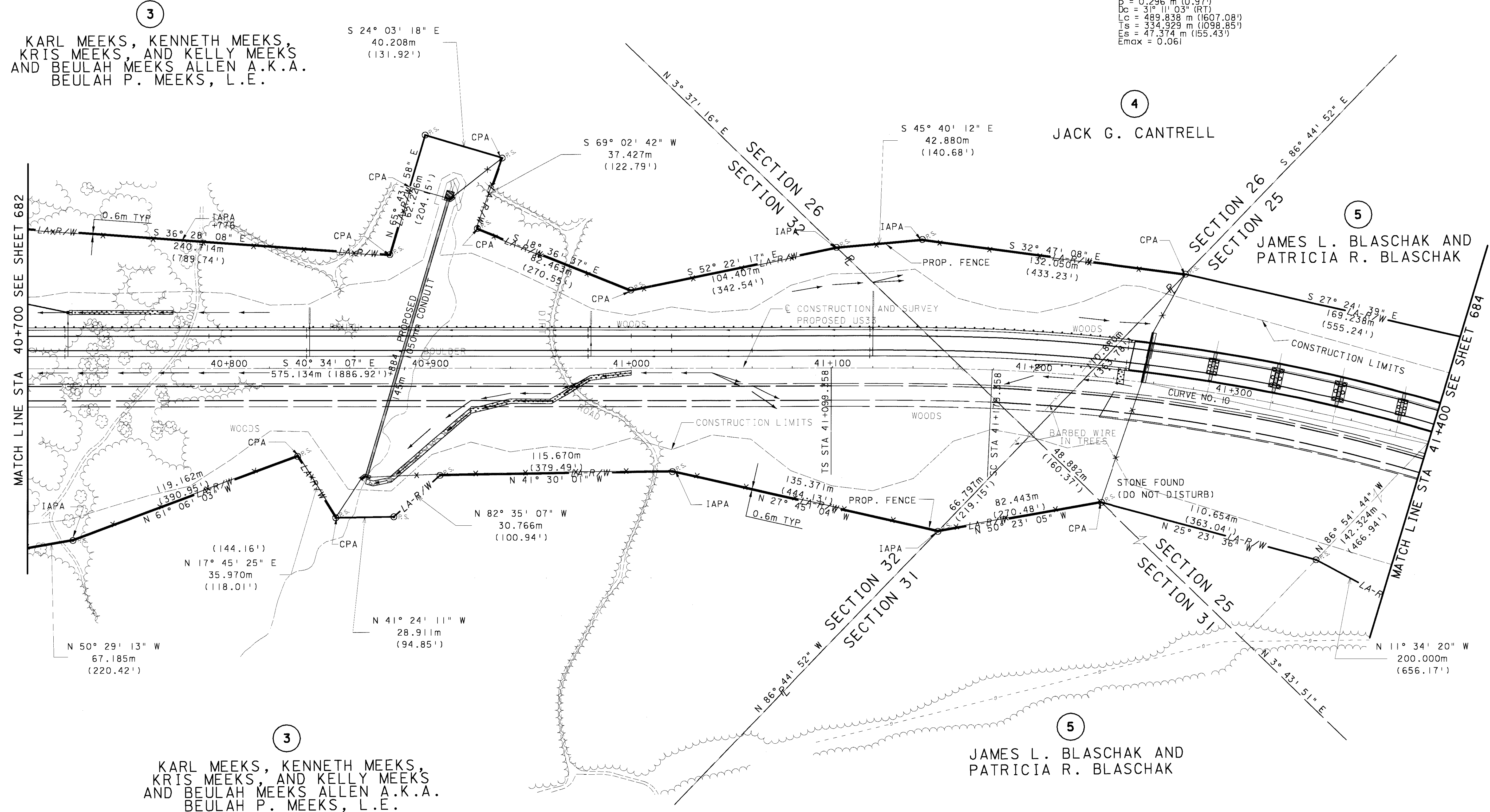
CALCULATED  
CHECKED

FENCE PLAN  
STA. 40+700 TO STA. 41+400

ATH-33-40.981

683  
949

CURVE DATA NO. 10 US 33 MAINLINE  
P.I. STA. = 41+434.287  
 $\Delta = 36^{\circ} 16' 37''$  (RT)  
R = 900.000 m (2952.75')  
Ls = 80.000 m (262.47')  
 $\theta = 2^{\circ} 32' 47''$   
LT = 53.339 m (175.00')  
ST = 26.672 m (87.51')  
x = 79.984 m (262.41')  
y = 1.165 m (3.89')  
K = 39.997 m (131.22')  
P = 0.296 m (0.97')  
Dc =  $3^{\circ} 11' 03''$  (RT)  
Lc = 489.838 m (1607.08')  
Ts = 334.929 m (1098.85')  
Es = 47.374 m (155.43')  
Emax = 0.061



3  
KARL MEEKS, KENNETH MEEKS,  
KRIS MEEKS, AND KELLY MEEKS  
AND BEULAH MEEKS ALLEN A.K.A.  
BEULAH P. MEEKS, L.E.

4  
JACK G. CANTRELL

5  
JAMES L. BLASCHAK AND  
PATRICIA R. BLASCHAK

3  
KARL MEEKS, KENNETH MEEKS,  
KRIS MEEKS, AND KELLY MEEKS  
AND BEULAH MEEKS ALLEN A.K.A.  
BEULAH P. MEEKS, L.E.

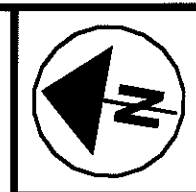
5  
JAMES L. BLASCHAK AND  
PATRICIA R. BLASCHAK

NOTE: CPA = CORNER POST ASSEMBLY.  
EPA = END POST ASSEMBLY.  
IAPA = INTERMEDIATE ANCHOR  
POST ASSEMBLY

NOTE: O.P.S. DENOTES 3/4" x 30" LONG  
IRON PIPE SET WITH CENTER  
PUNCHED ALUMINUM CAP STAMPED  
'ODOT R/W - S6950'

02/07/01  
05:07:04 PM  
m:\p\01\982A\06-00\dst\docs\106r\p03.dgn





0 20 40  
HORIZONTAL  
SCALE IN METERS

CALCULATED  
CHECKED

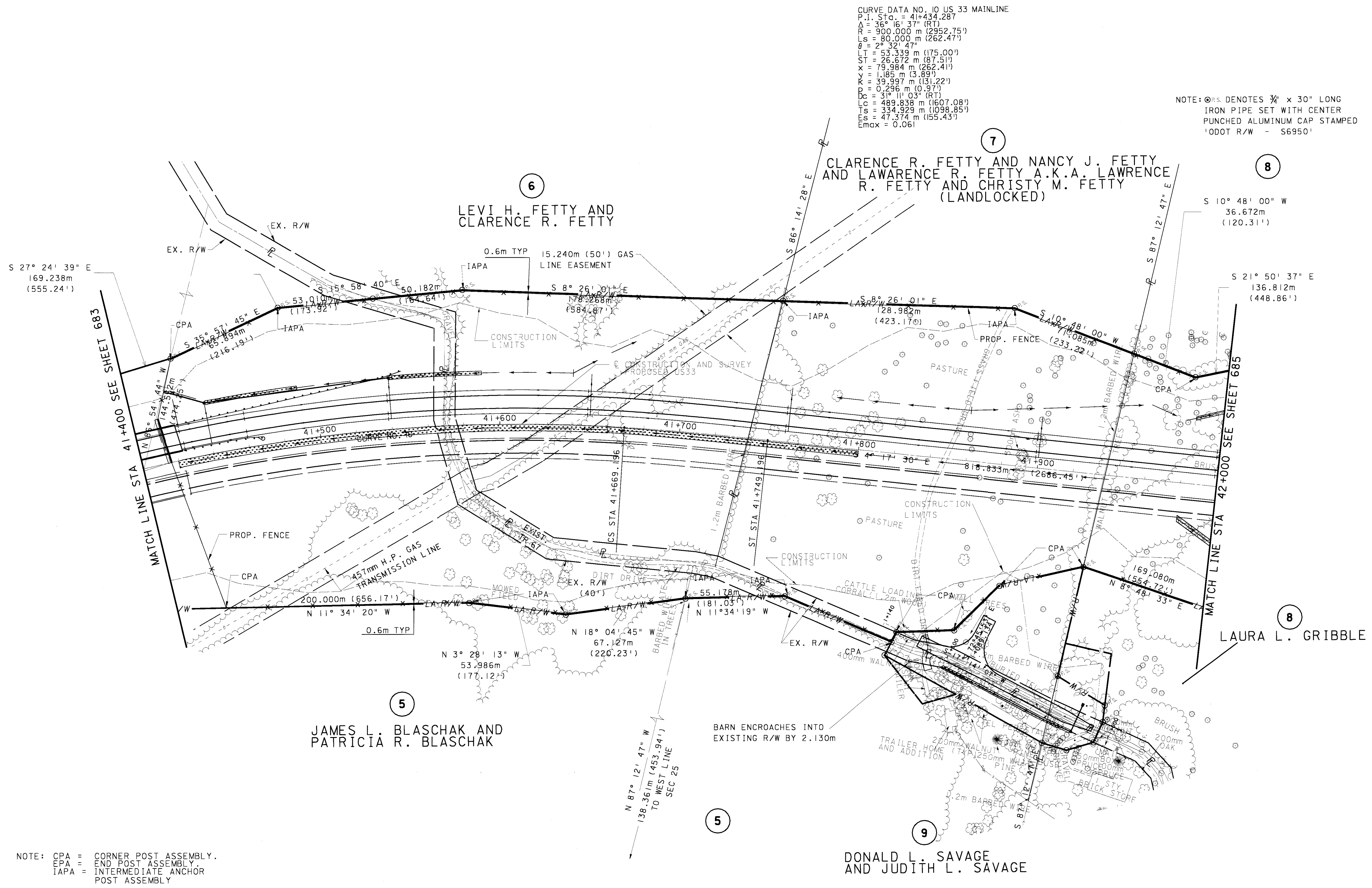
FENCE PLAN  
STA. 41+400 TO STA. 42+000

ATH-33-40.981

684  
949

CURVE DATA NO. 10 US 33 MAINLINE  
P.I. Sta. = 41+434.287  
 $\Delta = 36^\circ 16' 37''$  (RT)  
R = 900.000 m (2952.75')  
Ls = 80.000 m (262.47')  
 $\theta = 2^\circ 32' 47''$   
LT = 53.339 m (175.00')  
ST = 26.672 m (87.51')  
X = 79.984 m (262.41')  
Y = 1.185 m (3.89')  
K = 39.997 m (131.22')  
D = 0.296 m (0.97')  
Dc =  $31^\circ 11' 03''$  (RT)  
Lc = 489.838 m (1607.08')  
Tc = 334.929 m (1098.85')  
Es = 47.374 m (155.43')  
Emax = 0.061

NOTE:  $\odot$  P.S. DENOTES  $\frac{3}{4}$ " x 30" LONG  
IRON PIPE SET WITH CENTER  
PUNCHED ALUMINUM CAP STAMPED  
'DOT R/W - S6950'



NOTE: CPA = CORNER POST ASSEMBLY.  
EPA = END POST ASSEMBLY  
IAPA = INTERMEDIATE ANCHOR  
POST ASSEMBLY

02/07/01  
05:01:06 PM  
m:\p\01\382\016-00\dst\docs\1016r\p04.dgn

CURVE DATA CR 89  
 P.I. Sta. = 2+425.502  
 Δ = 19° 46' 12" (LT)  
 R = 120.000 m  
 T = 20.911 m  
 E = 41.406 m  
 F = 1.808 m

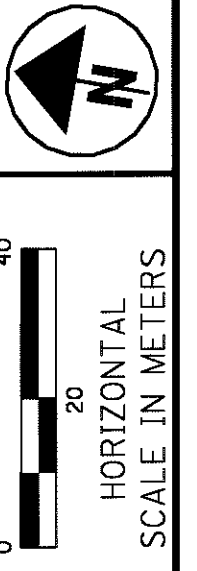
P.I. Sta. = 2+313.147  
 Δ = 25° 22' 41" (RT)  
 R = 120.000 m  
 T = 27.189 m  
 E = 53.361 m  
 F = 3.028 m

P.I. Sta. = 2+187.381  
 Δ = 15° 17' 56" (LT)  
 R = 120.000 m  
 T = 16.117 m  
 E = 32.042 m  
 F = 1.077 m

P.I. Sta. = 2+061.575  
 Δ = 15° 30' 17" (RT)  
 R = 400.000 m  
 T = 54.455 m  
 E = 108.244 m  
 F = 3.690 m

NOTE: ⊙ S. DENOTES 3/4" x 30" LONG  
 IRON PIPE SET WITH CENTER  
 PUNCHED ALUMINUM CAP STAMPED  
 'ODOT R/W - S6950'

CURVE DATA NO. II US 33 MAINLINE  
 P.I. Sta. = 42+815.547  
 Δ = 18° 44' 24" (LT)  
 R = 1,500.000m (4921.25')  
 T = 247.518m (812.07')  
 L = 490.614m (1612.90')  
 E = 20.285m (66.55')  
 Emax = 0.040

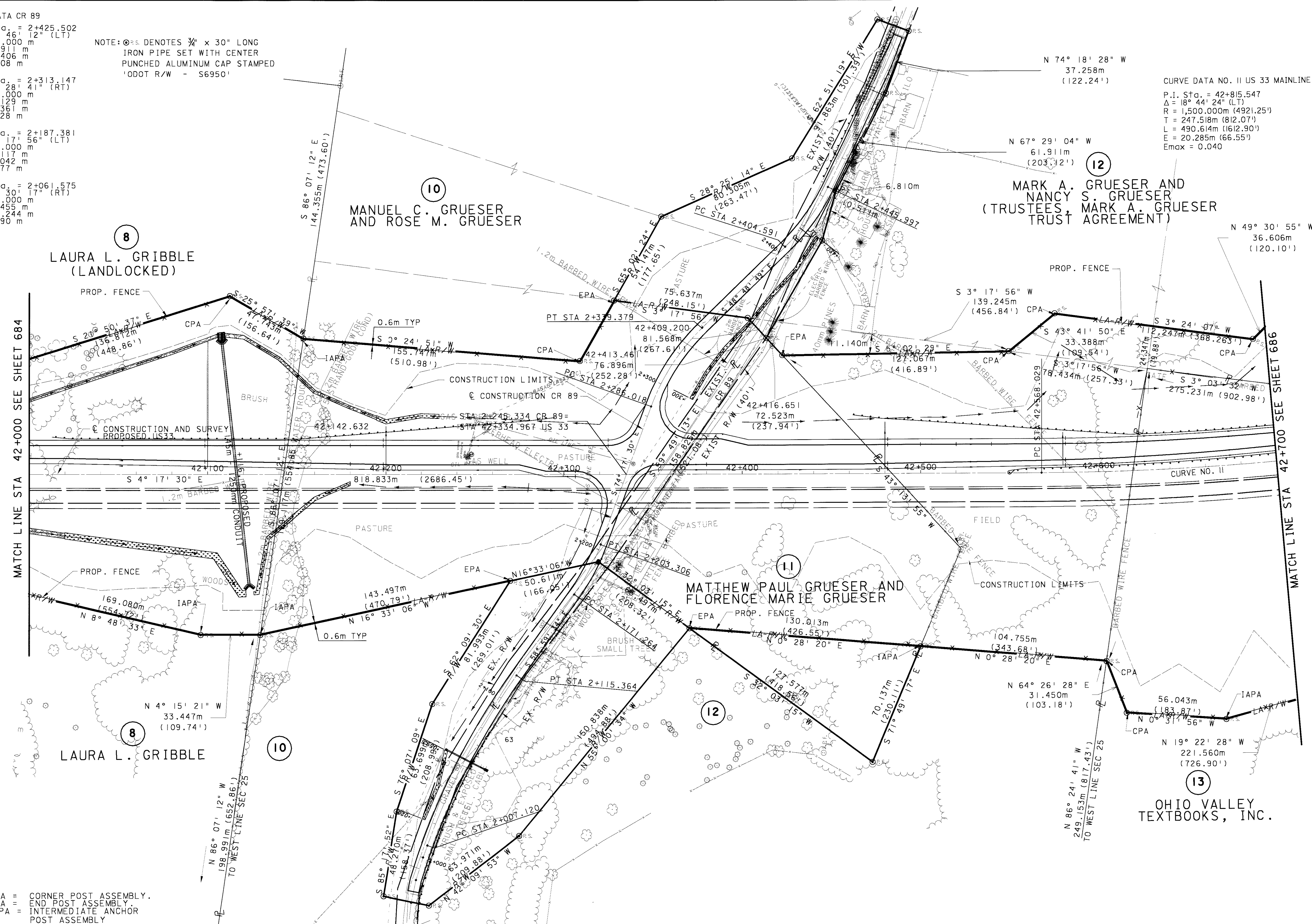


CALCULATED  
 CHECKED

FENCE PLAN  
 STA. 42+000 TO STA. 42+7000

ATH-33-40.981

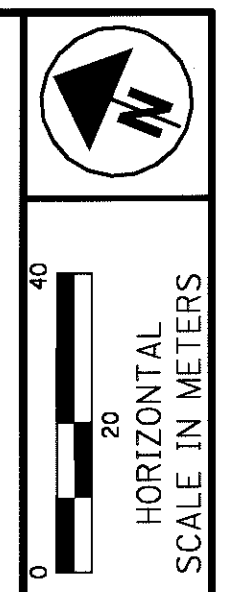
685  
 949



NOTE: CPA = CORNER POST ASSEMBLY.  
 EPA = END POST ASSEMBLY.  
 IAPA = INTERMEDIATE ANCHOR POST ASSEMBLY

02/07/01  
 05:07:17 PM  
 m:\p\proj\9821\016-00\ds\1\docs\1016r-p05.dgn





NOTE:  $\odot$  S. DENOTES  $\frac{3}{4}$ " x 30" LONG  
IRON PIPE SET WITH CENTER  
PUNCHED ALUMINUM CAP STAMPED  
'ODOT R/W - S6950'

CURVE DATA NO. II US 33 MAINLINE

P.I. Sta. = 42+815.547  
 $\Delta$  = 18° 44' 24" (LT)  
R = 1,500.000m (4921.25')  
T = 247.518m (812.07')  
L = 490.614m (1612.90')  
E = 20.285m (66.55')  
Emax = 0.040

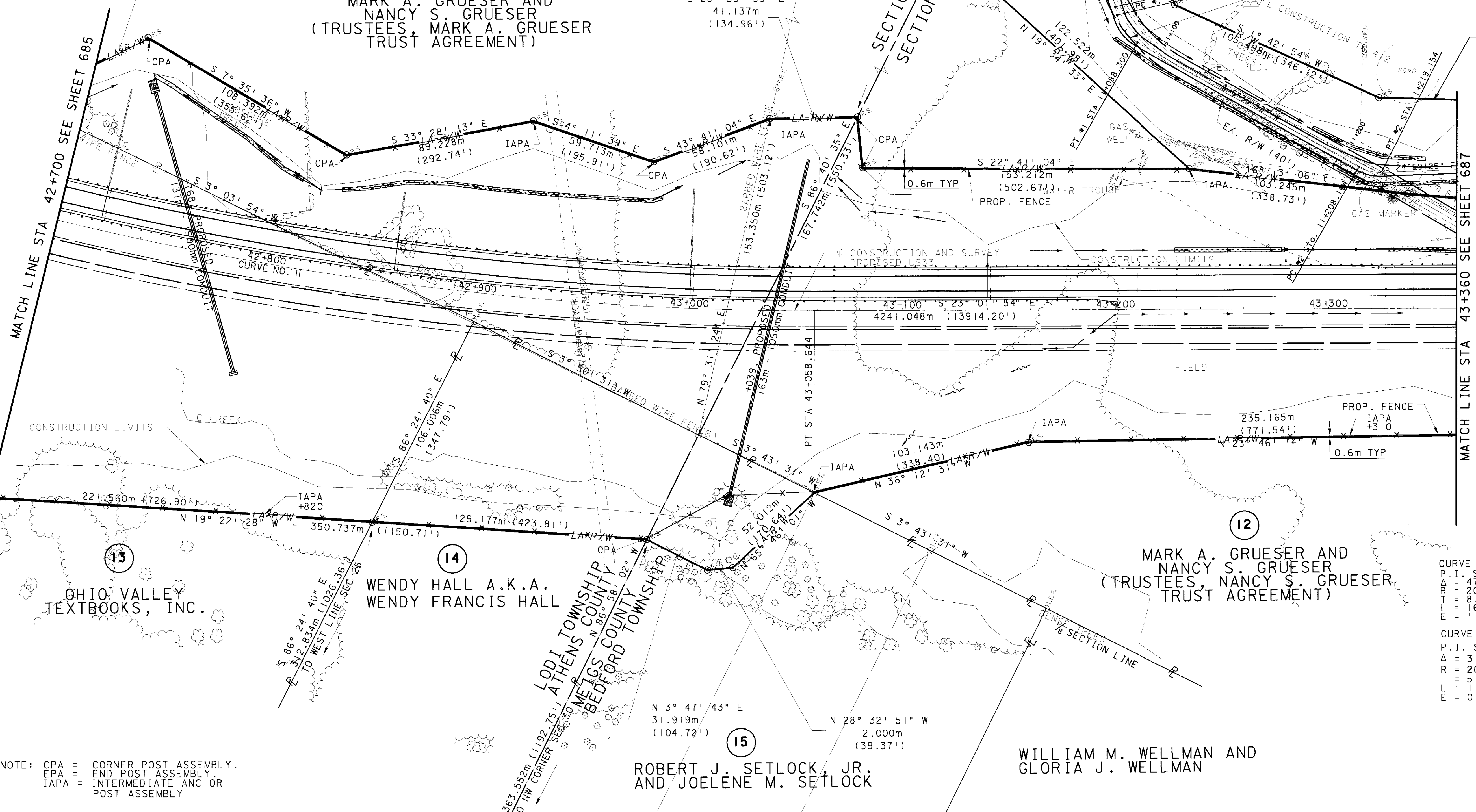
N 49° 30' 55" W  
36.606m  
(120.10')

12  
MARK A. GRUESER AND  
NANCY S. GRUESER  
(TRUSTEES, MARK A. GRUESER  
TRUST AGREEMENT)

S 23° 53' 59" E  
41.137m  
(134.96')

12  
MARK A. GRUESER AND  
NANCY S. GRUESER  
(TRUSTEES, NANCY S.  
GRUESER TRUST AGREEMENT)

S 21° 21' 30" E  
100.202m  
(328.75')



NOTE: CPA = CORNER POST ASSEMBLY.  
EPA = END POST ASSEMBLY.  
IAPA = INTERMEDIATE ANCHOR  
POST ASSEMBLY

CURVE #1 DATA TR 412  
P.I. Sta. = 11+080.524  
 $\Delta$  = 47° 28' 21" (LT)  
R = 20.000m (65.62')  
T = 6.795m (22.28')  
L = 6.571m (21.55')  
E = 1.848m (6.06')

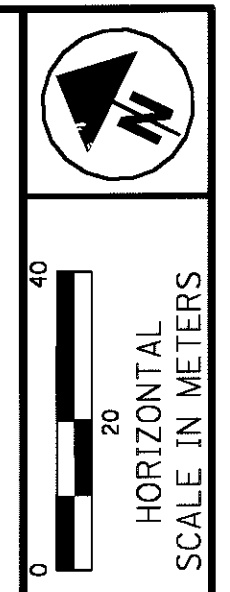
CURVE #2 DATA TR 412  
P.I. Sta. = 11+213.774  
 $\Delta$  = 31° 39' 17" (LT)  
R = 20.000m (65.62')  
T = 5.670m (18.60')  
L = 11.050m (36.25')  
E = 0.788m (2.59')

FENCE PLAN  
STA. 42+700 TO STA. 43+360

ATH-33-40.981

686  
949

02/07/01  
05:07:22 PM  
m:\p\c\1982\1\016-00\dsl\docs\1016r.p06.dgn

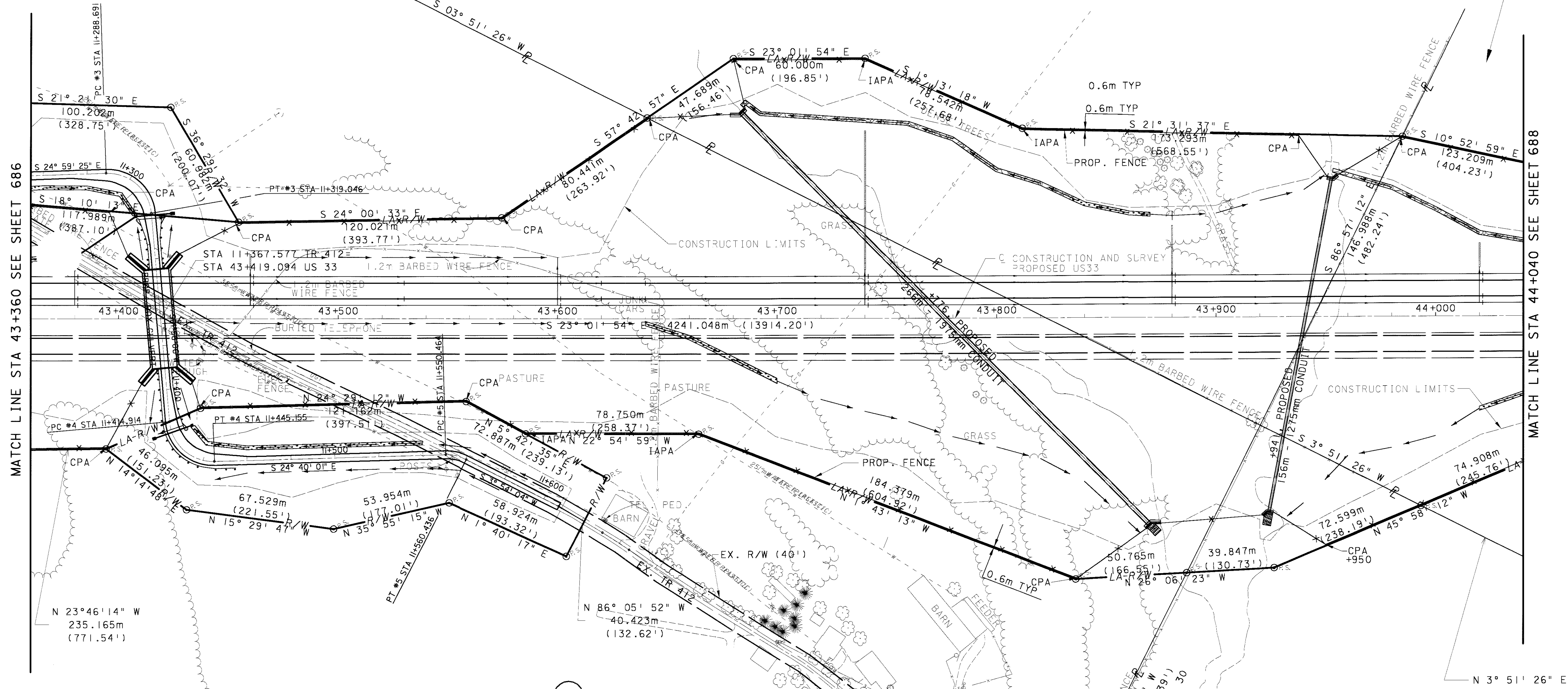


NOTE:  $\odot$  S. DENOTES  $\frac{3}{4}$ " x 30" LONG  
 IRON PIPE SET WITH CENTER  
 PUNCHED ALUMINUM CAP STAMPED  
 'ODOT R/W - S6950'

12  
 MARK A. GRUESER AND  
 NANCY S. GRUESER  
 (TRUSTEES, NANCY S.  
 GRUESER TRUST AGREEMENT)

16  
 BILLY RAY O'BRIEN AND  
 HENRIETTA O'BRIEN

18  
 ROBERT E. LEE AND  
 DONNA L. LEE



MATCH LINE STA 43+360 SEE SHEET 686

MATCH LINE STA 44+040 SEE SHEET 688

CURVE #3 DATA TR 412  
 P.I. Sta. = 11+307.657  
 $\Delta = 86^\circ 57' 32''$  (RT)  
 R = 20.000 m  
 T = 18.966 m  
 L = 30.354 m  
 E = 7.563 m

CURVE #4 DATA TR 412  
 P.I. Sta. = 11+433.773  
 $\Delta = 86^\circ 38' 07''$  (LT)  
 R = 20.000 m  
 T = 18.859 m  
 L = 30.241 m  
 E = 7.489 m

CURVE #5 DATA TR 412  
 P.I. Sta. = 11+555.556  
 $\Delta = 28^\circ 34' 05''$  (RT)  
 R = 20.000 m  
 T = 5.092 m  
 L = 9.972 m  
 E = 0.638 m

12  
 MARK A. GRUESER AND  
 NANCY S. GRUESER  
 (TRUSTEES, NANCY S.  
 GRUESER TRUST AGREEMENT)

17  
 HOLLIE V. HAYES AND  
 LINDA S. HAYES

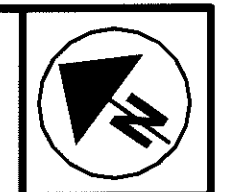
NOTE: CPA = CORNER POST ASSEMBLY.  
 EPA = END POST ASSEMBLY.  
 IAPA = INTERMEDIATE ANCHOR  
 POST ASSEMBLY

FENCE PLAN  
 STA. 43+360 TO STA. 44+040

ATH-33-40.981

687  
 949

02/07/01  
 05:07:36 PM  
 m:\p\01\982\1016-00\vdsl\docs\1016-rp01.dgn



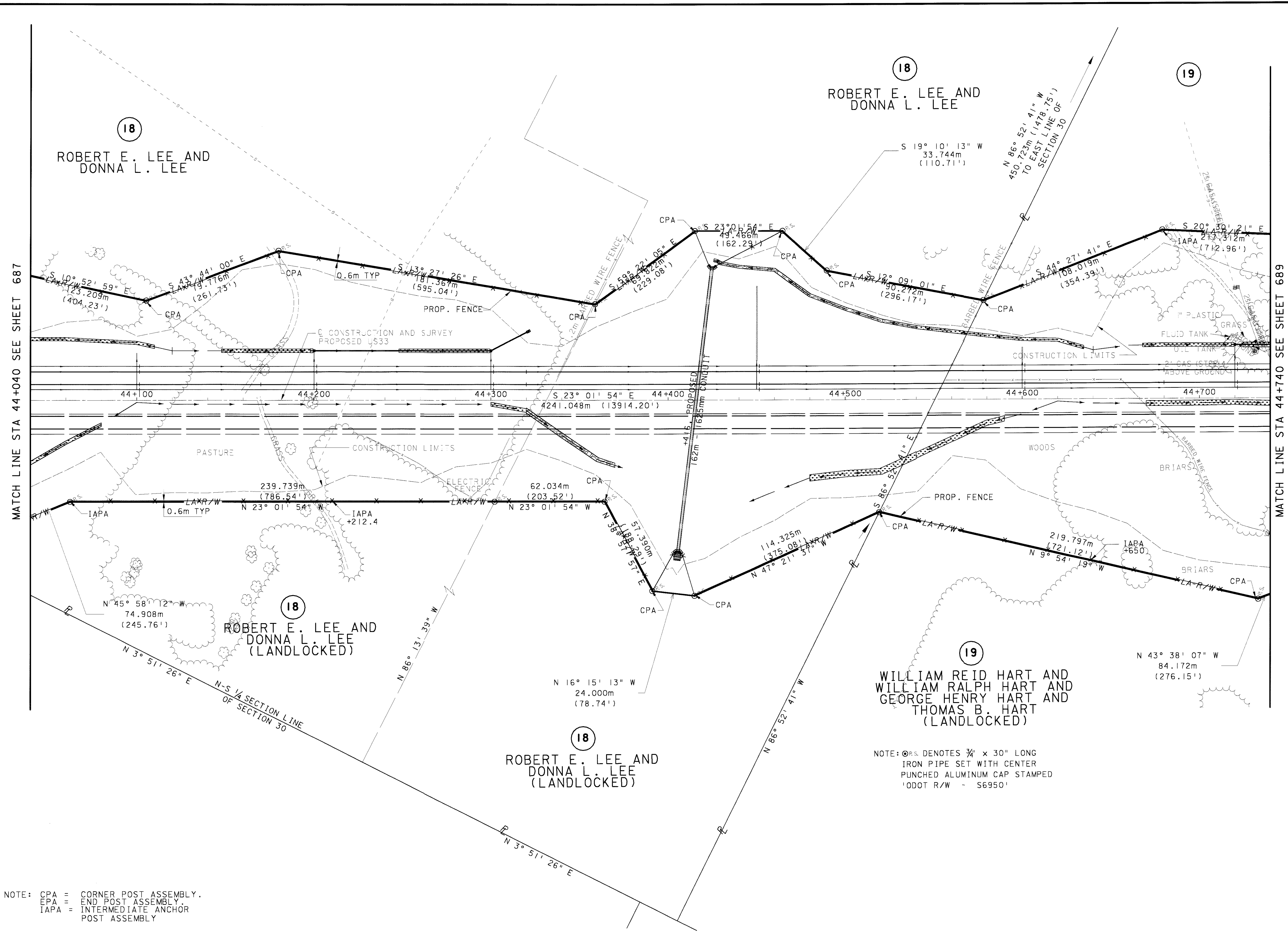
0 20 40  
HORIZONTAL  
SCALE IN METERS

CALCULATED  
CHECKED

FENCE PLAN  
STA. 44+440 TO STA. 44+740

ATH-33-40.981

688  
949



NOTE: CPA = CORNER POST ASSEMBLY.  
EPA = END POST ASSEMBLY.  
IAPA = INTERMEDIATE ANCHOR POST ASSEMBLY

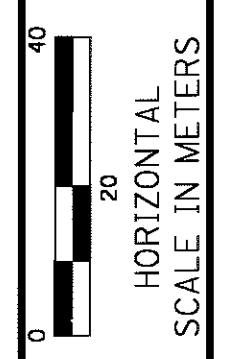
NOTE:  $\odot$  P.S. DENOTES  $\frac{3}{4}$ " x 30" LONG IRON PIPE SET WITH CENTER PUNCHED ALUMINUM CAP STAMPED 'DOT R/W - S6950'

MATCH LINE STA 44+040 SEE SHEET 687

MATCH LINE STA 44+740 SEE SHEET 689

02/07/01 PM 05:07:45  
m:\p\01\9821\016-00\dsl\docs\016-r-p08.dgn



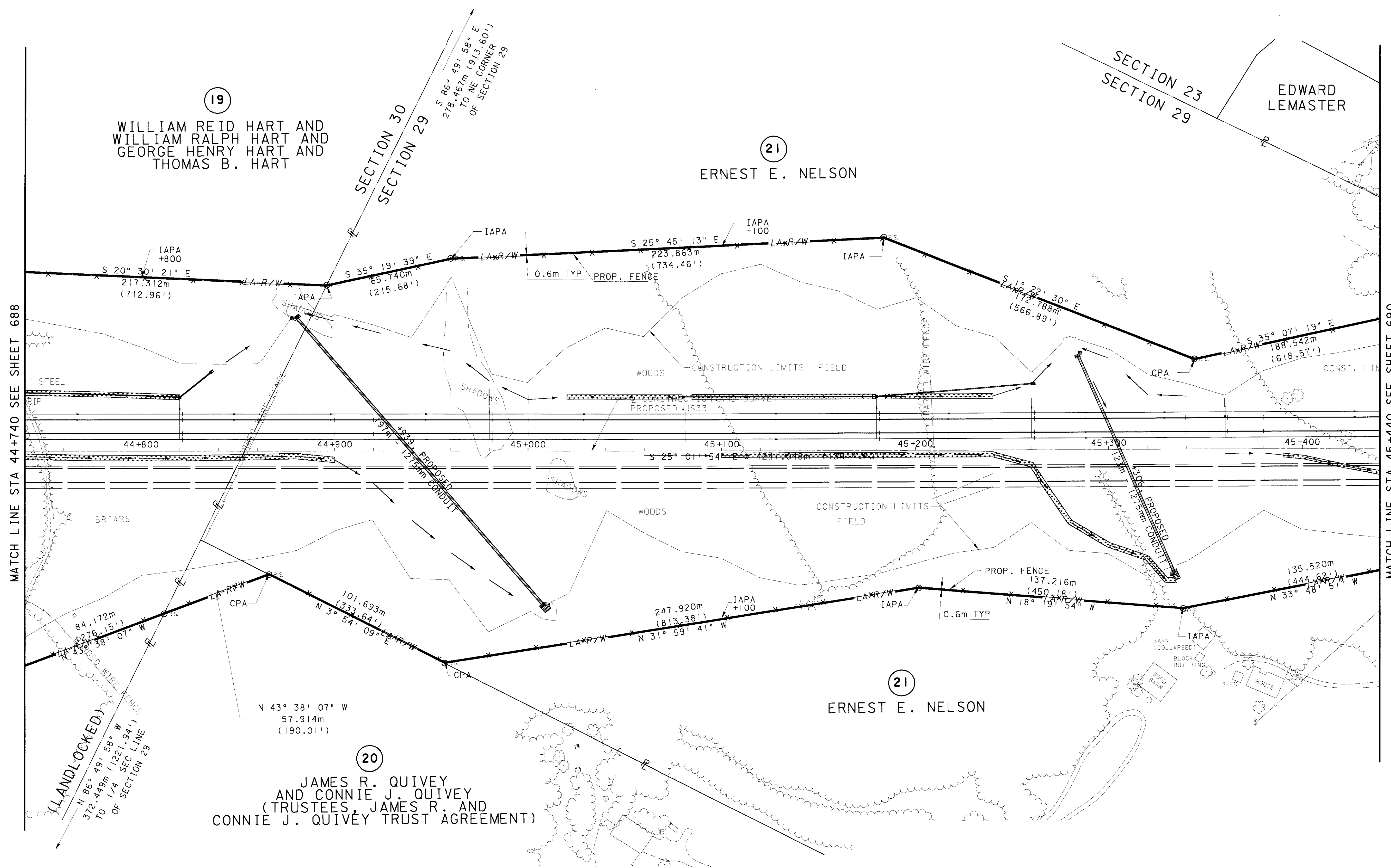


CALCULATED  
CHECKED

**FENCE PLAN**  
**STA. 44+740 TO STA. 45+440**

**ATH-33-40.981**

689  
949



(19)  
 WILLIAM REID HART AND  
 WILLIAM RALPH HART AND  
 GEORGE HENRY HART AND  
 THOMAS B. HART

(21)  
 ERNEST E. NELSON

(20)  
 JAMES R. QUIVEY  
 AND CONNIE J. QUIVEY  
 (TRUSTEES, JAMES R. AND  
 CONNIE J. QUIVEY TRUST AGREEMENT)

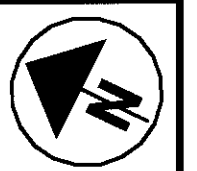
MATCH LINE STA 44+740 SEE SHEET 688

MATCH LINE STA 45+440 SEE SHEET 690

NOTE:  $\odot$ RS DENOTES  $\frac{3}{4}$ " x 30" LONG  
 IRON PIPE SET WITH CENTER  
 PUNCHED ALUMINUM CAP STAMPED  
 'ODOT R/W - S6950'

NOTE: CPA = CORNER POST ASSEMBLY.  
 EPA = END POST ASSEMBLY  
 IAPA = INTERMEDIATE ANCHOR  
 POST ASSEMBLY

02/07/01 PM  
 05:07:52  
 m:\p\p\1\9821\016-00\dasi\docs\016r.p09.dgn



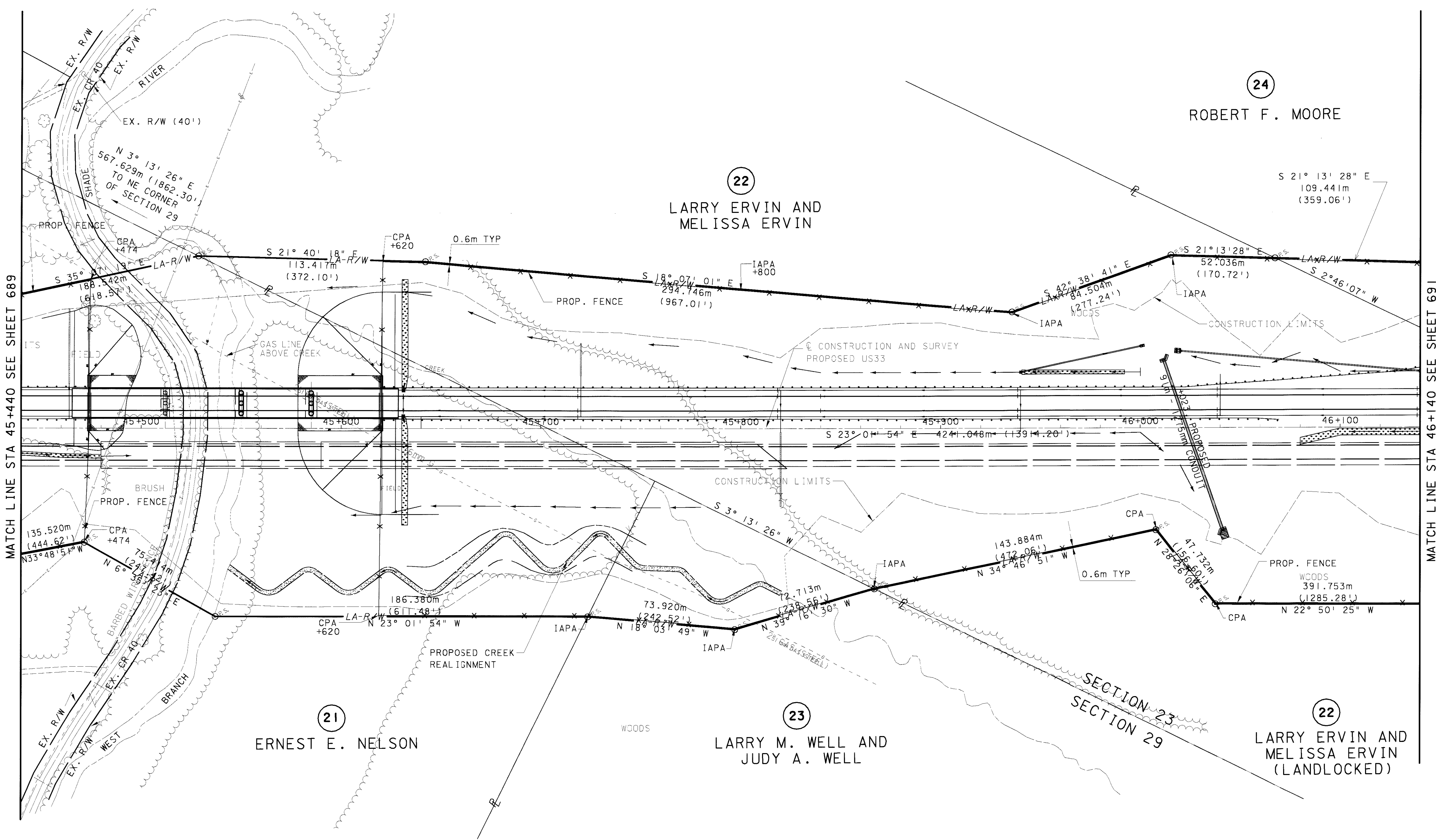
0 20 40  
HORIZONTAL  
SCALE IN METERS

CALCULATED  
CHECKED

ATH-33-40.981  
FENCE PLAN  
STA. 45+440 TO STA. 46+140

ATH-33-40.981

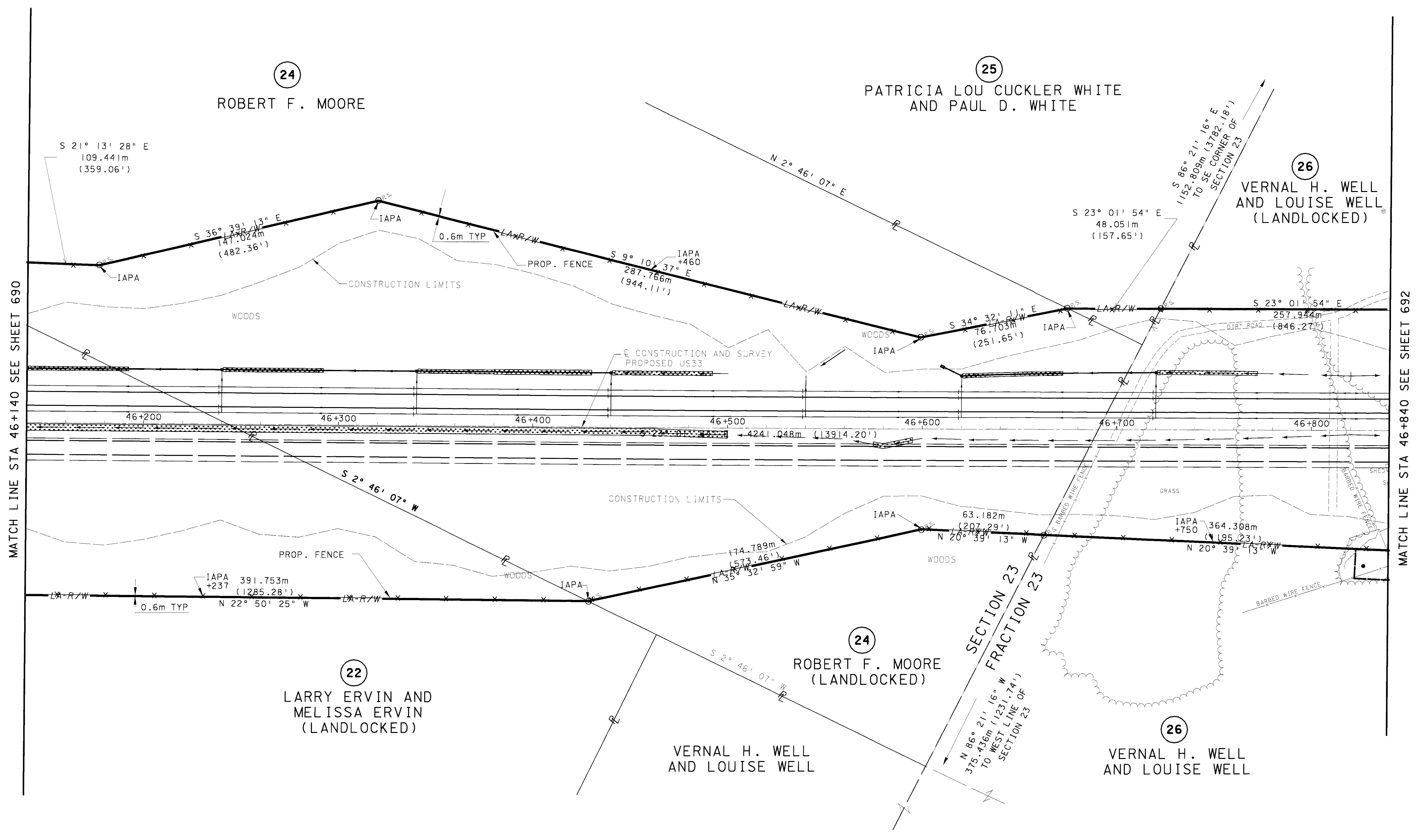
690  
949



NOTE:  $\odot$ RS. DENOTES  $\frac{3}{4}$ " x 30" LONG  
IRON PIPE SET WITH CENTER  
PUNCHED ALUMINUM CAP STAMPED  
'ODOT R/W - S6950'

NOTE: CPA = CORNER POST ASSEMBLY.  
EPA = END POST ASSEMBLY.  
IAPA = INTERMEDIATE ANCHOR  
POST ASSEMBLY

02/07/01  
05:08:14 PM  
m:\p\ro\1982\1016-00\as\docs\1016r.pl0.dgn



NOTE: CPA = CORNER POST ASSEMBLY.  
 EPA = END POST ASSEMBLY.  
 IAPA = INTERMEDIATE ANCHOR POST ASSEMBLY

NOTE: @rs DENOTES 3/4" x 30" LONG IRON PIPE SET WITH CENTER PUNCHED ALUMINUM CAP STAMPED 'ODOT R/W - S6950'





0 20 40  
HORIZONTAL  
SCALE IN METERS

CALCULATED  
CHECKED

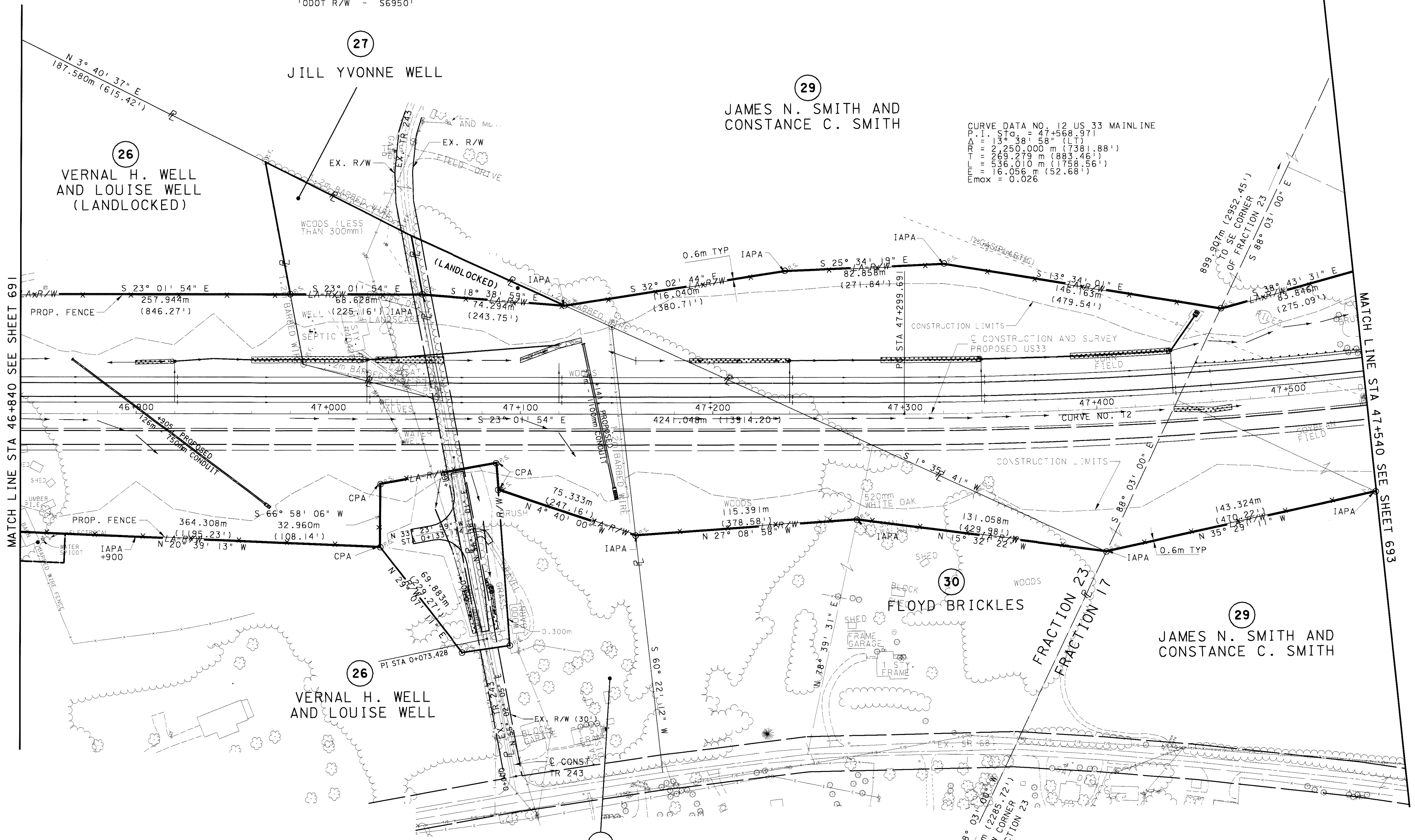
FENCE PLAN  
STA. 46+840 TO STA. 47+540

ATH-33-40.981

692  
949

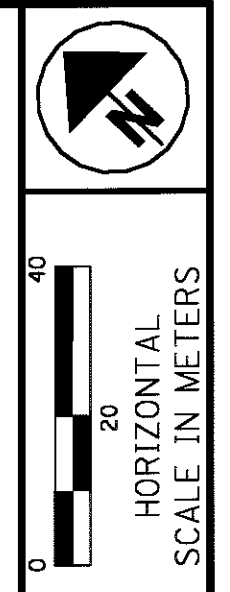
NOTE:  $\odot$ RS DENOTES 3/4" x 30" LONG  
IRON PIPE SET WITH CENTER  
PUNCHED ALUMINUM CAP STAMPED  
'ODOT R/W - S6950'

CURVE DATA NO. 12 US 33 MAINLINE  
P.I. STA. = 47+568.971  
 $\Delta = 13^\circ 38' 58" (LT)$   
R = 2,250.000 m (7381.88')  
T = 269.279 m (883.46')  
L = 536.010 m (1758.56')  
E = 16.056 m (52.68')  
Emax = 0.026



NOTE: CPA = CORNER POST ASSEMBLY.  
EPA = END POST ASSEMBLY.  
IAPA = INTERMEDIATE ANCHOR  
POST ASSEMBLY

02/07/01  
05:08:31 PM  
m:\proj\9821\016-00\dsl\docs\016r.p12.dgn



CALCULATED  
CHECKED

FENCE PLAN  
STA. 47+540 TO STA. 48+240

ATH-33-40.981

693  
949

- MONUMENT LEGEND
- EXISTING R/W MONUMENT BOX
  - PROPOSED R/W MONUMENT BOX
  - PROPOSED CONCRETE MONUMENT
  - RAILROAD SPIKE FOUND
  - RAILROAD SPIKE SET
  - IRON PIN FOUND
  - IRON PIN FOUND W/ ID CAP
  - IRON PIN SET W/ ID CAP
  - IRON PIPE FOUND
  - IRON PIPE SET
  - P.K. NAIL FOUND
  - P.K. NAIL SET
  - STONE FOUND

NOTE:  $\odot$  R.S. DENOTES  $\frac{3}{4}$ " x 30" LONG  
IRON PIPE SET WITH CENTER  
PUNCHED ALUMINUM CAP STAMPED  
'ODOT R/W - S6950'

CURVE DATA NO. 12 US 33 MAINLINE  
 P.I. Sta = 47+568.971  
 $\Delta$  =  $3^{\circ} 38' 58"$  (LT)  
 R = 226.50000 m (743.188')  
 T = 539.279 m (1773.461')  
 M = 539.210 m (1773.461')  
 Emax = 16.056 m (52.68')  
 E = 0.026

(29)  
 JAMES N. SMITH AND  
 CONSTANCE C. SMITH

(31)  
 KENNETH E. CHANEY AND  
 DOROTHY A. CHANEY

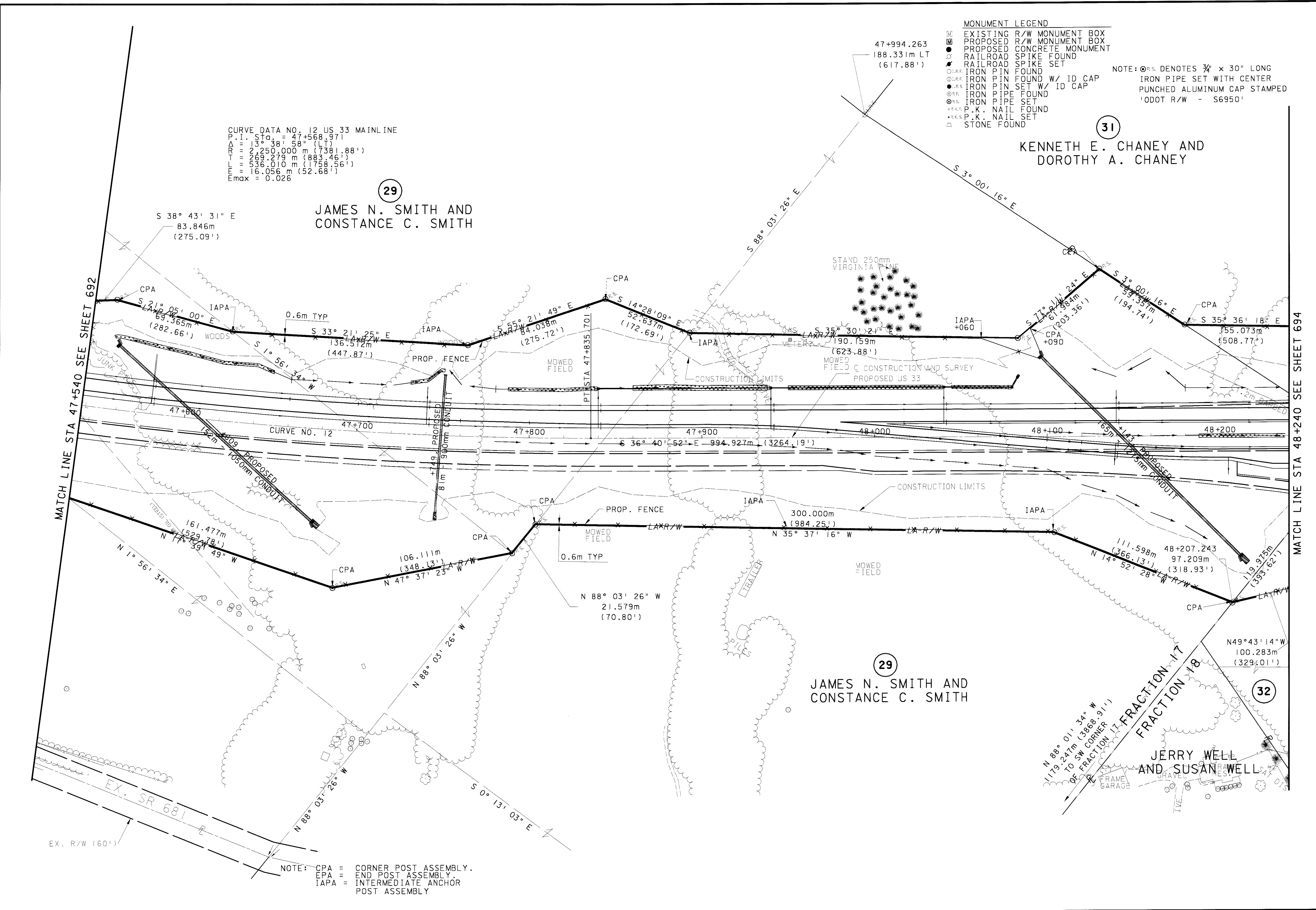
(29)  
 JAMES N. SMITH AND  
 CONSTANCE C. SMITH

(32)

JERRY WELL  
 AND SUSAN WELL

NOTE: CPA = CORNER POST ASSEMBLY.  
 EPA = END POST ASSEMBLY.  
 IAPA = INTERMEDIATE ANCHOR  
 POST ASSEMBLY

02/07/01  
 05:08:39 PM  
 m:\proj\9821\ND16-00\dsl\docs\1016r.pl3.dgn







0 20 40  
HORIZONTAL  
SCALE IN METERS

CALCULATED  
CHECKED

FENCE PLAN  
STA. 48+240 TO STA. 48+960

ATH-33-40.981

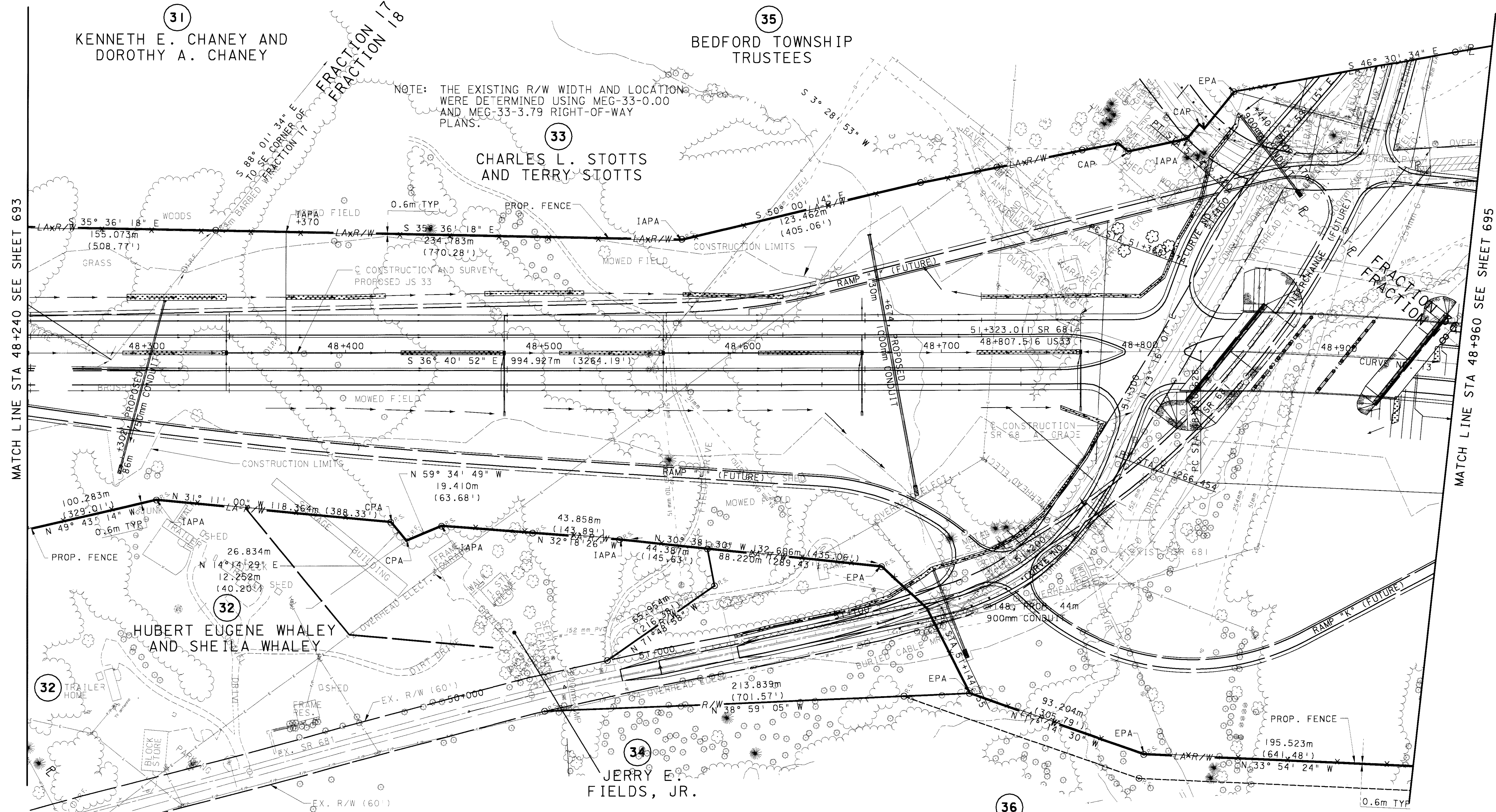
694  
949

CURVE DATA NO. 1  
SR 681 AT GRADE  
P.I. Sta. = 51+211.419  
Δ = 58° 06' 25" (LT)  
R = 120.000 m (393.70')  
T = 66.664 m (218.71')  
L = 121.699 m (399.274')  
E = 17.274 m (56.67')  
Emax = 0.020

CURVE DATA NO. 2  
SR 681 AT GRADE  
P.I. Sta. = 51+390.837  
Δ = 20° 44' 39" (RT)  
R = 120.000 m (393.70')  
T = 21.964 m (72.06')  
L = 43.446 m (142.54')  
E = 1.993 m (6.54')  
Emax = 0.070

NOTE: THE R/W OF EXISTING  
SR 681 WAS ESTABLISHED BY  
OCCUPATION, NO PLANS ARE  
AVAILABLE.

NOTE: THE EXISTING R/W WIDTH AND LOCATION  
WERE DETERMINED USING MEG-33-0.00  
AND MEG-33-3.79 RIGHT-OF-WAY  
PLANS.



MATCH LINE STA 48+240 SEE SHEET 693

MATCH LINE STA 48+960 SEE SHEET 695

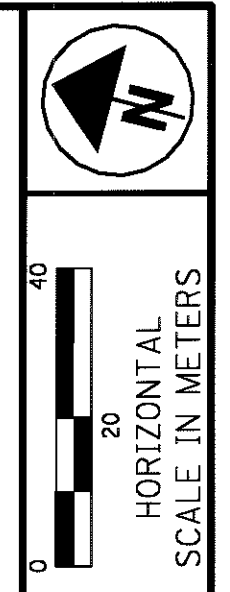
CURVE DATA NO. 13  
US 33 MAINLINE  
P.I. STA. = 49+148.317  
Δ = 29° 39' 24" (RT)  
R = 120.000 m (393.70')  
T = 317.689 m (1042.28')  
L = 621.129 m (2037.82')  
E = 41.341 m (135.63')  
Emax = 0.076

JUANITA DAVIS JENKINS,  
STEVEN HUFFINE,  
SHERRI HUFFINE,  
ROGER HAWKINS AND  
TERRY HAWKINS

NOTE: CPA = CORNER POST ASSEMBLY.  
EPA = END POST ASSEMBLY.  
IAPA = INTERMEDIATE ANCHOR  
POST ASSEMBLY.  
NOTE: ○ P.S. DENOTES 3/4" x 30" LONG  
IRON PIPE SET WITH CENTER  
PUNCHED ALUMINUM CAP STAMPED  
'DOT R/W - S6950'

02/07/01  
05:08:51 PM  
m:\proj\3821\016-00.dwg\docs\106r.p4.dgn



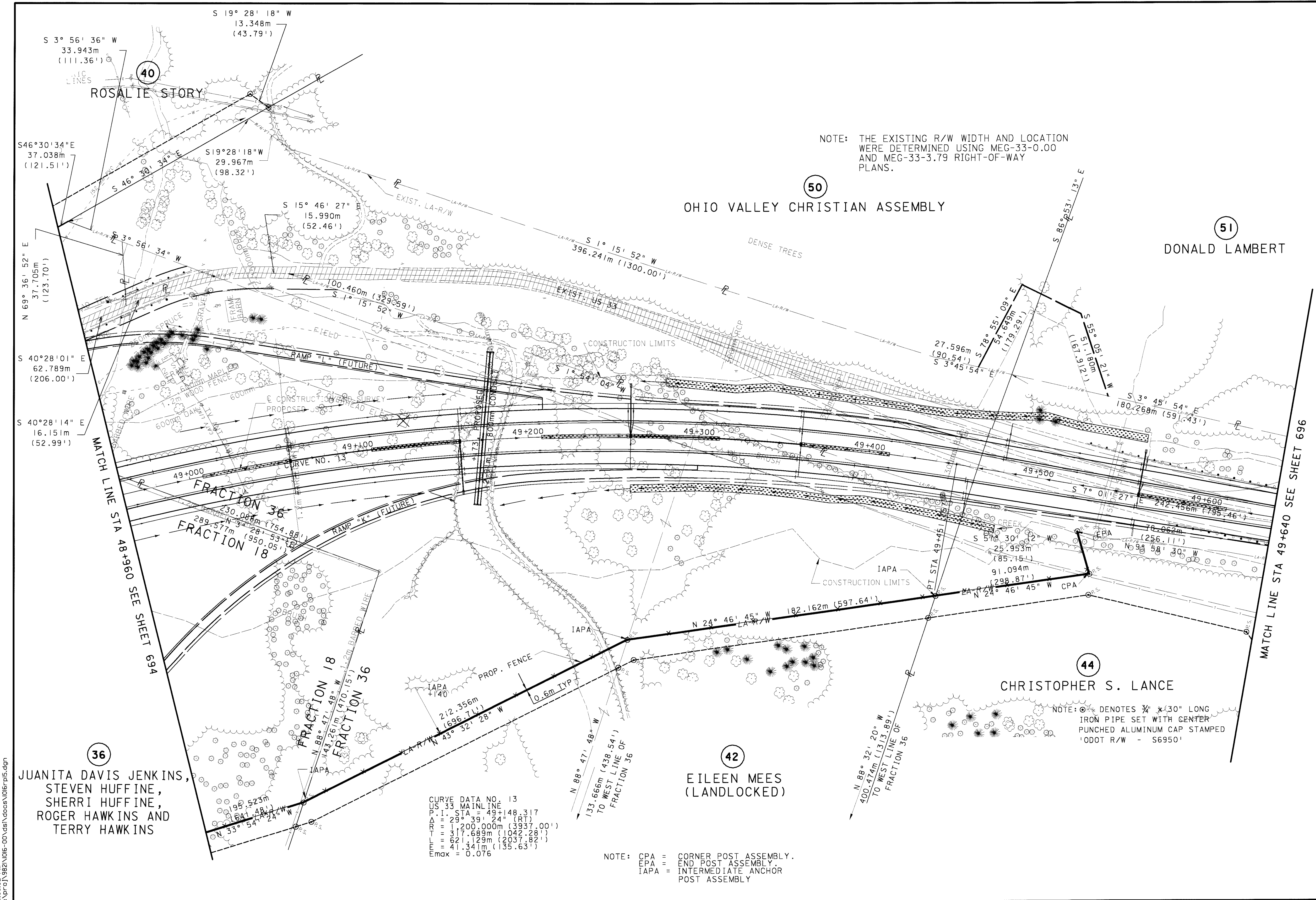


CALCULATED  
CHECKED

FENCE PLAN  
STA. 48+960 TO STA. 49+640

ATH-33-40.981

695  
949



NOTE: THE EXISTING R/W WIDTH AND LOCATION WERE DETERMINED USING MEG-33-0.00 AND MEG-33-3.79 RIGHT-OF-WAY PLANS.

CURVE DATA NO. 13  
US 33 MAINLINE  
P.I. STA = 49+148.317  
 $\Delta = 29^\circ 39' 24''$  (RT)  
R = 1,200.000m (3937.00')  
T = 317.689m (1042.28')  
E = 621.129m (2037.82')  
Emax = 0.076

NOTE: CPA = CORNER POST ASSEMBLY.  
EPA = END POST ASSEMBLY.  
IAPA = INTERMEDIATE ANCHOR POST ASSEMBLY

NOTE: (Symbol) DENOTES 3/4" x 30" LONG IRON PIPE SET WITH CENTER PUNCHED ALUMINUM CAP STAMPED 'DOT R/W - S6950'

02/07/01  
05:09:02 PM  
m:\p\p\j\982\1016-00.dcn\docs\1016rpl5.dgn

NOTE: THE EXISTING R/W WIDTH AND LOCATION WERE DETERMINED USING MEG-33-3.79 RIGHT-OF-WAY PLANS.

CURVE DATA NO. 14  
 US 33 MAINLINE  
 P.I. STA = 49+763.070  
 $\Delta = 4^{\circ} 30' 57''$  (LT)  
 $R = 1,746.397m$  (5729.64')  
 $T = 69.857m$  (229.11')  
 $L = 137.842m$  (451.58')  
 $E = 1.357m$  (4.45')  
 $E_{max} = 0.035$

51  
 DONALD LAMBERT

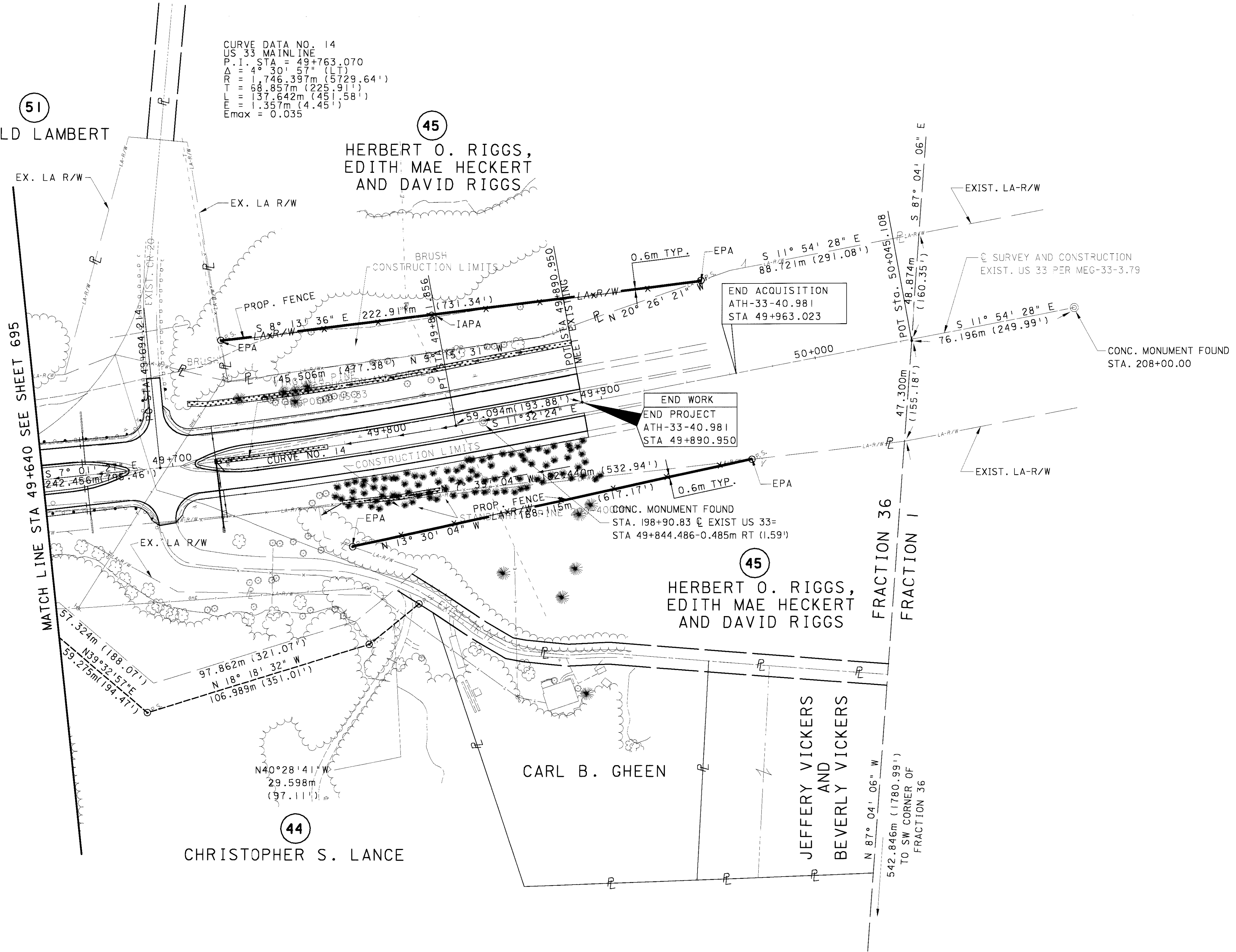
45  
 HERBERT O. RIGGS,  
 EDITH MAE HECKERT  
 AND DAVID RIGGS

45  
 HERBERT O. RIGGS,  
 EDITH MAE HECKERT  
 AND DAVID RIGGS

44  
 CHRISTOPHER S. LANCE

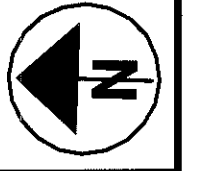
CARL B. GHEEN

JEFFERY VICKERS  
 AND  
 BEVERLY VICKERS



NOTE: CPA = CORNER POST ASSEMBLY.  
 EPA = END POST ASSEMBLY  
 IAPA = INTERMEDIATE ANCHOR  
 POST ASSEMBLY

NOTE:  $\odot$ rs DENOTES  $\frac{3}{4}$ " x 30" LONG  
 IRON PIPE SET WITH CENTER  
 PUNCHED ALUMINUM CAP STAMPED  
 'ODOT R/W - S6950'



0 20 40  
 HORIZONTAL  
 SCALE IN METERS

CALCULATED  
 CHECKED

FENCE PLAN  
 STA. 49+640 TO STA. 49+950

ATH-33-40.981

696  
 949

02/07/01  
 05:09:10 PM  
 m:\p\p\j\3821\016-00\dsl\docs\1016r.pl6.dgn





02/07/01  
05:05:11 PM  
m:\p\ro\9821\016-001\dsk\docs\Fau33-02.dgn

SHEET NO.	STATION	SIDE	DISTANCE FROM ☉ OF US 33	POST ASSEMBLY TYPE	607 FOR INFO. ONLY									
					FENCE, TYPE 47	CROSSING TYPE, S.C.D. F-3.4M		ABUTMENT CONNECTION						
						m	2		3	D	EACH			
687	43+430	R	24.0	-	-								1	
	43+437.4	R	40.4	CPA	17.0									
	43+558.5	R	37.3	CPA	121.1									
	43+585.6	R	52.1	IAPA	30.8									
	43+664.3	R	52.3	IAPA	78.7									
	43+836.1	R	119.3	CPA	184.3									
	43+869	R	96.0	-	40.3									
	43+872	R	94.0	-	-									
	43+921	R	91.0	-	50.0									
	43+925	R	90.0	-	-									
	43+950	R	104.0	CPA	28.0									
	44+040	R	66.0	-	96.5									
688	44+040	L	69.8	-	-									
	44+105.3	L	55.8	CPA	69.5									
	44+179.9	L	84.0	CPA	79.7									
	44+358.7	L	53.8	CPA	181.3									
	44+415	L	95.2	CPA	69.8									
	44+424	L	75.0	-	22.0									
	44+426	L	75.0	-	-									
	44+464.2	L	95.2	CPA	43.0									
	44+489.3	L	72.5	CPA	33.7									
	44+578.1	L	55.5	CPA	90.5									
	44+679	L	95.1	IAPA	108.0									
	44+740	L	92.4	-	61.1									
	44+040	R	66.0	-	-									
	44+062.4	R	57.0	IAPA	24.1									
	44+212.4	R	57.0	IAPA	150.0									
	44+364.6	R	57.0	CPA	152.2									
	44+391.4	R	107.6	CPA	57.4									
	44+404	R	86.0	-	25.0									
	44+407	R	86.0	-	-									
	44+414.9	R	110.5	CPA	25.7									
	44+519.1	R	63.4	CPA	114.3									
	44+650	R	94.5	IAPA	134.5									
	44+733.1	R	113.3	CPA	85.3									
	44+740	R	110.7	-	7.4									
689	44+740	L	92.4	-	-									
	44+800	L	89.7	IAPA	60.3									
	44+895.8	L	85.4	IAPA	95.9									
	44+960	L	99.4	IAPA	65.7									
	45+100	L	106.0	IAPA	140.2									
	45+183.6	L	110.0	IAPA	83.7									
	45+344.2	L	46.2	CPA	172.8									
689	45+440	L	65.3	-	98.0									
<b>TOTAL</b>					2897.8									

SHEET NO.	STATION	SIDE	DISTANCE FROM ☉ OF US 33	POST ASSEMBLY TYPE	607 FOR INFO. ONLY									
					FENCE, TYPE 47	CROSSING TYPE, S.C.D. F-3.4M		ABUTMENT CONNECTION						
						m	2		3	D	EACH			
689	44+740	R	110.7	-	-									
	44+866.2	R	62.7	CPA	134.7									
	44+956.8	R	109.3	CPA	101.7									
	45+100	R	86.7	IAPA	145.0									
	45+201.7	R	70.7	IAPA	102.9									
	45+338.5	R	82.0	IAPA	137.2									
	45+440	R	62.6	-	103.3									
690	45+440	L	65.3	-	-									
	45+474	L	74.0	CPA	35.1									
	45+474	L	26.5	-	47.5									
	45+620	L	26.5	-	-									
	45+620	L	83.5	CPA	57.0									
	45+800	L	69.4	IAPA	180.5									
	45+935.6	L	57.6	IAPA	136.1									
	46+015.2	L	86.1	IAPA	84.5									
	46+140	L	82.2	-	124.8									
	45+440	R	62.6	-	-									
	45+471.6	R	46.6	CPA	32.2									
	45+474	R	1.5	-	45.2									
	45+620	R	1.5	-	-									
	45+620	R	93.9	CPA	92.4									
	45+723.5	R	93.9	IAPA	103.5									
	45+797.2	R	100.3	IAPA	73.9									
	45+867	R	80.0	IAPA	72.7									
	46+007.9	R	50.6	CPA	144.3									
	46+037.6	R	88.0	CPA	47.7									
	46+140	R	88.4	-	102.4									
691	46+140	L	82.2	-	-									
	46+176.6	L	81.0	IAPA	36.6									
	46+319.5	L	115.7	IAPA	147.0									
	46+460	L	81.0	IAPA	144.7									
	46+598.9	L	46.8	IAPA	143.0									
	46+674	L	62.1	IAPA	76.7									
	46+840	L	62.1	-	166.0									
	46+140	R	88.4	-	-									
	46+235	R	88.7	IAPA	95.0									
	46+429.3	R	89.3	IAPA	194.4									
	46+600	R	51.4	IAPA	174.8									
	46+750	R	57.7	IAPA	150.0									
691	46+840	R	61.4	-	90.0									
<b>TOTAL</b>					3522.8									

SHEET NO.	STATION	SIDE	DISTANCE FROM ☉ OF US 33	POST ASSEMBLY TYPE	607 FOR INFO. ONLY										
					FENCE, TYPE 47	CROSSING TYPE, S.C.D. F-3.4M		ABUTMENT CONNECTION							
						m	2		3	D	EACH				
692	46+840	L	62.1	-	-										
	46+850	L	62.1	IAPA	10.0										
	47+048.6	L	62.1	IAPA	198.0										
	47+122.7	L	56.4	IAPA	74.3										
	47+237.3	L	74.6	IAPA	116.0										
	47+320	L	78.1	IAPA	82.8										
	47+468.1	L	48.0	IAPA	146.1										
	47+540	L	61.0	-	71.1										
	46+840	R	61.0	-	-										
	46+900	R	63.9	IAPA	60.0										
	47+026.5	R	69.1	CPA	126.5										
	47+026.5	R	36.2	CPA	32.9										
	47+088	R	25.1	CPA	70.6										
	47+089.1	R	39.2	CPA	14.1										
	47+160	R	62.9	IAPA	74.8										
	47+275.1	R	54.6	IAPA	115.4										
	47+401.7	R	74.1	IAPA	131.0										
	47+539.6	R	53.9	IAPA	143.3										
	47+540	R	53.9	-	0.4										
693	47+540	L	61	-	-										
	47+552.7	L	63.1	CPA	12.7										
	47+622.8	L	51.9	IAPA	69.3										
	47+762.8	L	52.6	IAPA	136.5										
	47+844.1	L	80.7	CPA	84.0										
	47+892.8	L	60.8	IAPA	52.6										
	48+060	L	57.3	IAPA	167.2										
	48+096	L	46.0	-	37.7										
	48+097	L	48.0	-	-										
	48+090	L	62.8	CPA	16.3										
	48+130.1	L	97.2	CPA	61.9										
	48+179.3	L	64.2	CPA	59.3										
	48+240	L	63.1	-	60.7										
	47+540	R	53.9	-	-										
	47+691.8	R	91.4	IAPA	161.4										
	47+791.5	R	66.9	CPA	106.1										
	47+804.3	R	49.8	CPA	21.5										
	47+950	R	52.4	IAPA	146.0										
	48+103.6	R	55.1	IAPA	154.0										
	48+207.2	R	96.6	CPA	111.6										
	48+240	R	89.0	-	33.6										
<b>TOTAL COLUMN 1</b>					2897.8										
<b>TOTAL COLUMN 2</b>					3522.8										
<b>TOTAL THIS COLUMN</b>					2959.7										
<b>TOTAL THIS SHEET</b>					9380.3										

**FENCE SUBSUMMARY**

**ATH-33-40.981**

697A  
949

CALCULATED  
BDD  
CHECKED  
TDW

02/07/01  
 05:09:42 PM  
 m:\p\01\982\1016-00\dss\docs\Fsu33-03.dgn

SHEET NO.	STATION	SIDE	DISTANCE FROM C OF US 33	POST ASSEMBLY TYPE	FOR INFO. ONLY			
					607 FENCE, TYPE 47	CROSSING TYPE, S.C.D. F-3.4M		TERMINAL TYPE D, S.C.D. F-3.3M
	FROM		m		2	3	D	EACH
694	48+240	L	63.1	-	-			
	48+370	L	60.7	IAPA	156.9			
	48+569.3	L	56.9	IAPA	199.3			
	48+689.4	L	85.4	IAPA	123.4	1		
	48+789.1	L	104.9	CPA	93.5			
	48+794.1	L	100.7	CPA	6.5			
	48+823.4	L	107.1	IAPA	30.0			
	48+829.4	L	114.9	CPA	9.8			
	48+831.8	L	112.4	CPA	3.4			
	48+845.5	L	130.8	EPA	24.1			
	48+240	R	89.0	-	-			
	48+304.9	R	73.9	IAPA	66.6			
	48+422.7	R	85.3	CPA	118.3			
	48+430.4	R	94.8	CPA	12.2			
	48+448.3	R	87.2	CPA	19.4			
	48+538.1	R	94.1	IAPA	90.0			
	48+670	R	108.0	EPA	132.6			
	48+714.2	R	172.5	EPA	-			
	48+802.1	R	204.1	IAPA	93.2			
	48+960	R	204.0	-	136.5			
695	48+960	R	204.0	-	-			
	49+031.6	R	199.0	IAPA	59.0			
	49+140	R	166.8	IAPA	101.3			
	49+259.3	R	119.4	IAPA	111.0			
	49+452.8	R	77.8	IAPA	182.1			
	49+539	R	50.0	CPA	90.5			
	49+527.8	R	26.5	EPA	25.9			
696	49+729	L	54.7	EPA	-			
	49+831.8	L	51.7	IAPA	99.0			
	49+955.1	L	44.5	EPA	123.9			
696	49+776.5	R	46.9	EPA	-			
	49+963	R	39.6	EPA	188.1			
TOTAL FROM SHEET 697					8168.0			
TOTAL FROM SHEET 697A					9380.3			
TOTAL THIS SHEET					2296.5			
SUBTOTAL					19844.8			
TOTAL CARRIED TO GENERAL SUMMARY					19845			

CALCULATED  
 BBD  
 CHECKED  
 TDW

FENCE SUBSUMMARY

ATH-33-40.981

698  
 949