

MAP SHOWING PROPERTY TO BE DETACHED FROM THE CORPORATION OF MARTINS FERRY, OHIO

IN ACCORDANCE WITH SECTION 709.38 O.R.C.

THIS IS A PETITION BY PROPERTY OWNER LISTED ON SHEETS 3 THRU 5 OF THE ENCLOSED DETACHMENT PLATS WHO ARE THE INHABITANTS OF THE TERRITORY FOR DETACHMENT FROM THE CITY OF MARTINS FERRY, OHIO. TO WIT:

TO THE BOARD OF COUNTY COMMISSIONERS OF BELMONT COUNTY, OHIO AND THE CITY COUNCIL OF MARTINS FERRY

WE THE UNDERSIGNED BEING THE OWNERS OF THE FOLLOWING DESCRIBED TERRITORY IN THE CITY OF MARTINS FERRY, COUNTY OF BELMONT, SITUATED IN THE CITY OF MARTINS FERRY, COUNTY OF BELMONT, AND STATE OF OHIO, AND BEING MORE PARTICULARLY DESCRIBED ON SHEET 2 OF THIS DOCUMENT.

AN ACCURATE MAP OF THE PROPERTY DESCRIBED ABOVE ON SHEETS 3 THRU 5 THE SIGNERS OF THE ATTACHED PETITION RESPECTIVELY PETITION THAT THE DESCRIBED TERRITORY BE DETACHED FROM THE CITY OF MARTINS FERRY, AND MADE PART OF PEASE TOWNSHIP, BELMONT COUNTY, OHIO.

RESOLUTION OF COUNTY COMMISSIONERS ORDERING DETACHMENT OF THE TERRITORY DESCRIBED IN ATTACHED SHEET 1 FROM THE CITY OF MARTINS FERRY, BELMONT COUNTY, OHIO. RESOLUTION NO. _____

MR. THOMAS PRESENTED THE RESOLUTION, AND MOVED FOR ITS ADOPTION. SECONDED BY MR. OLEXO WHEREAS, UPON THE PETITION OF THE OWNERS OF THE PORTION OF THE TERRITORY OF A MUNICIPALITY, SUCH TERRITORY BEING ACCURATELY DESCRIBED THE PETITIONERS MAY PRAY TO THE BOARD OF THE COUNTY COMMISSIONERS FOR THE DETACHMENT OF SUCH TERRITORY FROM SUCH MUNICIPALITY WITH THE ASSENT OF COUNCIL OF SUCH MUNICIPALITY GIVEN BY ORDINANCE, SUCH TERRITORY TO BE ATTACHED TO ANY CONTIGUOUS TOWNSHIP AND WHEREAS THE SIGNERS OF THE ATTACHED PETITION BEING THE MAJORITY OF FREEHOLD ELECTORS IN SAID TERRITORY DID PETITION FOR DETACHMENT FROM THE CITY OF MARTINS FERRY AND FILED AN ACCURATE MAP AND DESCRIPTION OF SAID PROPERTY WITH SUCH PETITION AND WHEREAS THE COUNCIL OF THE CITY OF MARTINS FERRY DID PASS ORDINANCE NO. 2002-74 ON DECEMBER 31, 2002, ASSENTING TO THE DETACHMENT AND WHEREAS IT IS THE OPINION OF THE BOARD OF COUNTY COMMISSIONERS OF BELMONT COUNTY, OHIO THAT THE DETACHMENT BE ALLOWED.

NOW THEREFORE BE IT RESOLVED BY THE BOARD OF COUNTY COMMISSIONERS OF BELMONT COUNTY, OHIO:
SECTION 1: THAT THE TERRITORY DESCRIBED IN THE PETITION AND MAP ATTACHED HERETO ALSO DESCRIBED IN ORDINANCE NO. 2002-74 OF SECTION _____ MARTINS FERRY, OHIO ON DECEMBER 31, 2002 BE DETACHED FROM THE CITY OF MARTINS FERRY, AND BE ATTACHED TO PEASE TOWNSHIP.
SECTION 2: THAT THE CLERK OF THIS BOARD BE AND HEREBY IS DIRECTED TO CERTIFY A COPY OF THIS RESOLUTION, TOGETHER WITH PETITION, MAP AND ORDINANCE TO THE RECORDER OF BELMONT COUNTY, OHIO.
SECTION 3: THAT A COMPLETE COPY OF THE TRANSCRIPT BE CERTIFIED TO THE SECRETARY OF STATE, COLUMBUS, OHIO AND TO THE CLERK OF THE CITY OF MARTINS FERRY, OHIO. DATE: APRIL 9, 2003.

THE FOREGOING RESOLUTION NO. _____ WAS SECONDED BY MR. OLEXO AND UPON A ROLL THE VOTE RESULTED AS FOLLOWS:
MR. THOMAS - YES MR. OLEXO - YES MR. _____ - _____
DATE: APRIL 9, 2003

CERTIFICATION:
I, JOSEPH A. PAPPANO, AUDITOR OF THE COUNTY OF BELMONT DO HEREBY CERTIFY THAT THE FOREGOING RESOLUTION TO BE TRUE AND CORRECT COPY OF RESOLUTION NO. _____ WHICH WAS ENTERED IN THE JOURNAL OF THE BELMONT COUNTY COMMISSIONERS IN VOLUME 23 PAGE 316 ON THE 9th DAY OF APRIL 2003.
AUDITOR OF BELMONT COUNTY JOSEPH A. PAPPANO

ORDINANCE NO. _____
AN ORDINANCE ASSENTING TO THE DETACHMENT OF TERRITORY FROM THE CITY OF MARTINS FERRY AND DECLARING AN EMERGENCY

WHEREAS A PETITION SIGNED BY THE MAJORITY OF FREEHOLDER ELECTORS HAS BEEN PRESENTED TO THIS COUNCIL FOR THE DETACHMENT OF TERRITORY FROM THE CITY OF MARTINS FERRY, BELMONT COUNTY, OHIO, AND A MORE PARTICULAR DESCRIPTION OF THE TERRITORY TO BE DETACHED IS SET FORTH IN EXHIBIT A TO THIS ORDINANCE AND IS MADE A PART OF THIS ORDINANCE BY INCORPORATION, AND WHEREAS, AN ACCURATE MAP OF THIS TERRITORY TO BE DETACHED IS ALSO SET FORTH IN EXHIBIT A TO THIS PETITION.

NOW, THEREFORE, BE IT ORDAINED BY THE COUNCIL OF THE CITY OF MARTINS FERRY, OHIO, THAT THE FOLLOWING ACTION BE AUTHORIZED AND UNDERTAKEN:
SECTION ONE: THAT THE COUNCIL OF THE CITY OF MARTINS FERRY, OHIO, HEREBY ASSENTS TO AND GRANTS THE PETITION FOR THE DETACHMENT IN ALL RESPECTS.
SECTION TWO: THAT THIS ORDINANCE IS HEREBY DECLARED TO BE AN EMERGENCY MEASURE NECESSARY FOR THE PRESERVATION OF THE HEALTH, SAFETY, AND GENERAL WELFARE OF THE CITIZENS OF MARTINS FERRY IN THAT IT IS NECESSARY TO ENSURE THE PROGRESS OF ROUTE 7 THROUGH THE CITY OF MARTINS FERRY, WHICH IS VITAL TO THE CITY'S ECONOMIC SURVIVAL AND, THEREFORE, THIS ORDINANCE SHALL TAKE EFFECT IMMEDIATELY UPON SIGNATURE OF THE MAYOR.

PASSED AT A MEETING OF THE COUNCIL OF THE CITY OF MARTINS FERRY, HELD THIS 5th DAY OF June, 2003 BY THE THE YEA VOTE OF 6 MEMBERS.
APPROVED BY: Lloyd Shrodes
LLOYD SHRODES, MAYOR
DATE: 6-15-03

Plan Prepared By:
W. E. QUICKSALL AND ASSOCIATES, INC.
CIVIL ENGINEERS
554 West High Ave.
New Philadelphia, Ohio

ATTESTED BY: Les Douglas
LES DOUGLAS, PRESIDENT OF COUNCIL
DATE: 5-16-03
ATTESTED BY: Betty Preslin
CLERK OF COUNCIL BETTY PRESLIN
DATE: 5-19-03

I, JOAN GUBERNOT CLERK OF COUNCIL, DO HEREBY CERTIFY THIS IS A TRUE AND CORRECT COPY OF ORDINANCE NO. 2002-74 PASSED BY MARTINS FERRY CITY COUNCIL AT THEIR REGULAR MEETING, June 5, 2003. THE ORIGINAL ORDINANCE IS ON FILE AT THE MARTINS FERRY CITY BUILDING.

Betty Preslin
CLERK OF COUNCIL
BETTY PRESLIN

COUNTY ENGINEER:
APPROVED FOR THE RECORD THIS 6 DAY OF May, 2003

Fred Bennett, P.E., P.S.
FRED BENNETT, BELMONT COUNTY ENGINEER

COUNTY AUDITOR:
TRANSFERRED BY THE BELMONT COUNTY AUDITOR THIS 17th DAY OF July, 2003
FEE PAID \$122.50 BY John Pappano

JOSEPH A. PAPPANO, BELMONT COUNTY AUDITOR

COUNTY RECORDER:
INSTRUMENT NO. 7330
RECEIVED FOR RECORD 7-17, 2003 AT 3:00 O'CLOCK P.M.
RECORDED 7-22, 2003 IN BELMONT COUNTY RECORD OF PLATS CABINET E SLIDE 300-301-302-303-304

Mary C. Nixon, Belmont County Recorder
MARY C. NIXON, BELMONT COUNTY RECORDER
FEE PAID \$229.00 by L. Projai, deputy

CERTIFICATE OF SURVEYOR
I HEREBY CERTIFY THIS IS A TRUE MAP AND DESCRIPTION, MADE BY ME ON OR ABOUT OCTOBER 2002.
J. Carice Jameson
J. CARICE JAMESON, OHIO REGISTERED SURVEYOR #8166

FOR ORDINANCE NO. 210329/SEE DEED VOL. 190 PG. 53

SURVEYOR'S SEAL	REF. NO.	DESCRIPTION	DATE	BY	CH'K'D

CALCULATED MVC CHECKED JCU
DETACHMENT PLAN - COVER SHEET
CITY OF MARTINS FERRY BELMONT COUNTY, OHIO
1
5

DESCRIPTION OF PROPERTY TO BE DETACHED FROM THE CITY OF MARTINS FERRY

Situated in the County of Belmont, City of Martins Ferry, and State of Ohio, and being all of the area within the limited access lines of State Route 7 and within the corporation lines of the City of Martins Ferry as shown on the State of Ohio Department of Highways BEL-7-20.74 Right of Way Plans and the Plat Showing Extension of the Corporate Limits of Martins Ferry - 1973 Cabinet A, Slides 122-124, excepting a 5.00 foot wide strip along the northerly side of the corporation line between the City of Martins Ferry and the Village of Bridgeport, and containing 53.623 acres, more or less, and being located within the following described points in the boundary thereof:

Commencing at a point being located at the intersection of the corporation line of the City of Martins Ferry and the centerline of State Route 7, said point being at centerline Station 1125+07.70. Thence along the corporation line North 86 degrees 11 minutes 34 seconds West a distance of 79.29 feet to a point on the westerly LA line of said State Route 7 at Station 1124+55.31, 59.52 feet left; thence along said LA Line North 44 degrees 28 minutes 32 seconds East a distance of 6.59 feet to a point a Station 1124+61.91, 59.60 feet left, said point being the Place of Beginning for the land herein described:

Thence northerly, continuing along said westerly LA line, the following courses:

North 44 degrees 28 minutes 32 seconds East a distance of 441.62 feet to point at Station 1129+03.50, 64.87 feet left; North 44 degrees 28 minutes 32 seconds East a distance of 76.21 feet to point at Station 1129+79.70, 65.78 feet left; North 44 degrees 28 minutes 32 seconds East a distance of 522.72 feet to point at Station 1135+02.39, 72.02 feet left; North 44 degrees 28 minutes 32 seconds East a distance of 50.48 feet to point at Station 1135+52.86, 72.62 feet left; North 44 degrees 28 minutes 32 seconds East a distance of 822.82 feet to point at Station 1143+75.62, 82.44 feet left; South 50 degrees 22 minutes 01 seconds East a distance of 10.04 feet to point at Station 1143+76.59, 72.45 feet left; North 44 degrees 28 minutes 34 seconds East a distance of 150.55 feet to point at Station 1145+28.38, 73.70 feet left; North 44 degrees 29 minutes 35 seconds East a distance of 331.07 feet to point at Station 1148+62.32, 61.17 feet left; North 44 degrees 28 minutes 34 seconds East a distance of 139.70 feet to point at Station 1150+01.86, 54.38 feet left; North 64 degrees 09 minutes 42 seconds West a distance of 9.72 feet to point at Station 1149+99.20, 63.73 feet left; North 41 degrees 28 minutes 19 seconds East a distance of 168.57 feet to point at Station 1151+67.77, 64.38 feet left; North 69 degrees 24 minutes 24 seconds East a distance of 37.41 feet to point at Station 1152+00.89, 46.98 feet left; North 22 degrees 12 minutes 10 seconds West a distance of 31.76 feet to point at Station 1152+14.87, 75.50 feet left; North 08 degrees 40 minutes 39 seconds West a distance of 70.76 feet to point at Station 1152+60.00, 130.00 feet left; North 62 degrees 23 minutes 57 seconds East a distance of 93.38 feet to point at Station 1153+47.35, 96.98 feet left; North 42 degrees 35 minutes 47 seconds East a distance of 55.10 feet to point at Station 1154+02.44, 96.11 feet left; North 53 degrees 14 minutes 59 seconds East a distance of 67.93 feet to point at Station 1154+68.99, 82.50 feet left; South 50 degrees 22 minutes 12 seconds East a distance of 7.50 feet to point at Station 1154+69.26, 75.00 feet left; North 41 degrees 41 minutes 30 seconds East a distance of 129.74 feet to point at Station 1155+99.00, 75.00 feet left; North 41 degrees 41 minutes 30 seconds East a distance of 20.36 feet to point at Station 1156+19.36, 75.00 feet left; North 50 degrees 25 minutes 31 seconds West a distance of 5.14 feet to point at Station 1156+19.17, 80.14 feet left; North 42 degrees 36 minutes 07 seconds East a distance of 136.58 feet to point at Station 1157+55.73, 77.97 feet left; North 37 degrees 22 minutes 28 seconds East a distance of 69.48 feet to point at Station 1158+25.01, 83.20 feet left; North 36 degrees 47 minutes 43 seconds East a distance of 132.62 feet to point at Station 1159+57.15, 94.52 feet left; North 46 degrees 37 minutes 38 seconds East a distance of 116.00 feet to point at Station 1160+72.72, 84.54 feet left; North 43 degrees 22 minutes 21 seconds East a distance of 50.00 feet to point at Station 1160+77.02, 134.35 feet left; North 46 degrees 37 minutes 39 seconds East a distance of 319.82 feet to point at Station 1163+95.66, 106.84 feet left; South 43 degrees 22 minutes 21 seconds East a distance of 26.90 feet to point at Station 1163+93.34, 80.04 feet left; North 46 degrees 37 minutes 39 seconds East a distance of 50.00 feet to point at Station 1164+43.16, 75.74 feet left; North 43 degrees 22 minutes 21 seconds West a distance of 26.90 feet to point at Station 1164+45.47, 102.54 feet left; North 46 degrees 37 minutes 39 seconds East a distance of 266.00 feet to point at Station 1167+08.33, 81.07 feet left; South 43 degrees 22 minutes 21 seconds East a distance of 6.00 feet to point at Station 1167+07.98, 75.08 feet left; North 46 degrees 37 minutes 39 seconds East a distance of 100.00 feet to point at Station 1168+06.05, 70.38 feet left; North 41 degrees 52 minutes 56 seconds East a distance of 66.27 feet to point at Station 1168+71.01, 74.14 feet left; North 46 degrees 37 minutes 39 seconds East a distance of 100.00 feet to point at Station 1169+69.76, 73.48 feet left; South 43 degrees 22 minutes 21 seconds East a distance of 6.00 feet to point at Station 1169+69.75, 67.48 feet left; North 46 degrees 37 minutes 40 seconds East a distance of 376.00 feet to point at Station 1173+45.75, 67.15 feet left; North 46 degrees 37 minutes 39 seconds East a distance of 4.00 feet to point at Station 1173+49.75, 67.15 feet left; North 43 degrees 20 minutes 58 seconds East a distance of 142.81 feet to point at Station 1174+91.45, 74.34 feet left; North 05 degrees 18 minutes 46 seconds East a distance of 130.19 feet to point at Station 1175+93.60, 157.62 feet left; North 43 degrees 20 minutes 58 seconds East a distance of 63.00 feet to point at Station 1176+58.38, 158.84 feet left; South 63 degrees 07 minutes 39 seconds East a distance of 60.83 feet to point at Station 1176+76.77, 100.73 feet left; North 68 degrees 04 minutes 04 seconds East a distance of 55.09 feet to point at Station 1177+27.45, 77.37 feet left; North 40 degrees 04 minutes 21 seconds East a distance of 120.27 feet to point at Station 1178+49.31, 82.71 feet left; North 35 degrees 47 minutes 59 seconds East a distance of 226.84 feet to point at Station 1180+79.00, 102.72 feet left; North 39 degrees 22 minutes 03 seconds East a distance of 327.26 feet to point at Station 1184+11.97, 95.17 feet left; North 34 degrees 56 minutes 14 seconds East a distance of 127.29 feet to point at Station 1185+41.42, 96.94 feet left; North 39 degrees 22 minutes 02 seconds East a distance of 178.27 feet to point at Station 1187+21.77, 80.84 feet left; North 29 degrees 44 minutes 15 seconds East a distance of 177.41 feet to point at Station 1189+00.00, 90.00 feet left; North 39 degrees 40 minutes 23 seconds East a distance of 201.56 feet to point at Station 1191+00.00, 65.00 feet left; North 24 degrees 01 minutes 02 seconds East a distance of 55.15 feet to point at Station 1191+54.54, 73.18 feet left; North 24 degrees 01 minutes 02 seconds East a distance of 27.19 feet to point at Station 1191+81.43, 77.21 feet left; North 24 degrees 01 minutes 02 seconds East a distance of 119.90 feet to point at Station 1193+00.00, 95.00 feet left; North 31 degrees 24 minutes 08 seconds East a distance of 250.05 feet to point at Station 1195+50.00, 100.00 feet left; North 34 degrees 50 minutes 56 seconds East a distance of 139.73 feet to point at Station 1196+89.62, 94.39 feet left; North 31 degrees 15 minutes 26 seconds East a distance of 66.15 feet to point at Station 1197+55.75, 95.88 feet left; North 42 degrees 38 minutes 54 seconds East a distance of 165.54 feet to point at Station 1199+18.72, 66.85 feet left; North 46 degrees 55 minutes 44 seconds West a distance of 23.71 feet to point at Station 1199+23.05, 90.16 feet left; North 47 degrees 47 minutes 41 seconds East a distance of 53.85 feet to point at Station 1199+75.00, 76.00 feet left; North 33 degrees 33 minutes 58 seconds East a distance of 225.13 feet to point at Station 1202+00.00, 72.00 feet left; North 46 degrees 56 minutes 01 seconds West a distance of 9.70 feet to point at Station 1202+01.86, 81.54 feet left; North 34 degrees 18 minutes 04 seconds East a distance of 102.00 feet to point at Station 1203+03.81, 78.42 feet left; North 31 degrees 27 minutes 30 seconds East a distance of 51.17 feet to point at Station 1203+54.97, 79.39 feet left; North 31 degrees 27 minutes 30 seconds East a distance of 51.17 feet to point at Station 1204+06.13, 80.36 feet left; North 31 degrees 27 minutes 30 seconds East a distance of 84.55 feet to point at Station 1204+90.67, 81.97 feet left; North 08 degrees 21 minutes 41 seconds West a distance of 64.74 feet to point at Station 1205+39.60, 129.37 feet left; North 02 degrees 01 minutes 32 seconds West a distance of 47.23 feet to point at Station 1205+77.42, 151.27 feet left; North 47 degrees 54 minutes 51 seconds East a distance of 57.14 feet to point at Station 1206+30.75, 136.89 feet left; North 43 degrees 35 minutes 26 seconds East a distance of 73.20 feet to point at Station 1207+00.84, 125.01 feet left; North 60 degrees 34 minutes 16 seconds East a distance of 59.40 feet to point at Station 1207+52.79, 99.50 feet left; North 66 degrees 33 minutes 09 seconds East a distance of 93.73 feet to point at Station 1208+32.08, 52.00 feet left; Curve to the right, radius = 3958.53 feet, with a chord bearing of North 37 degrees 50 minutes 11 seconds East a distance of 158.89 feet to point at Station 1209+88.85, 52.00 feet left; North 29 degrees 31 minutes 39 seconds West a distance of 46.40 feet to point at Station 1210+05.44, 95.21 feet left; North 60 degrees 28 minutes 21 seconds East a distance of 149.29 feet to point at Station 1211+44.12, 42.43 feet left; North 50 degrees 55 minutes 21 seconds East a distance of 79.95 feet to point at Station 1212+22.59, 27.11 feet left; North 39 degrees 04 minutes 39 seconds West a distance of 25.50 feet to point at Station 1212+27.47, 52.13 feet left; North 39 degrees 04 minutes 39 seconds West a distance of 48.75 feet to point at Station 1212+36.82, 99.98 feet left; North 27 degrees 23 minutes 10 seconds East a distance of 72.11 feet to point at Station 1213+07.28, 115.30 feet left; North 59 degrees 23 minutes 03 seconds East a distance of 150.09 feet to point at Station 1214+48.76, 65.17 feet left; North 28 degrees 42 minutes 25 seconds West a distance of 55.00 feet to point at Station 1214+68.84, 116.37 feet left; North 61 degrees 17 minutes 37 seconds East a distance of 214.57 feet to point at Station 1216+68.59, 38.00 feet left; North 02 degrees 23 minutes 24 seconds West a distance of 55.79 feet to point at Station 1217+09.88, 75.52 feet left; North 28 degrees 42 minutes 29 seconds West a distance of 100.00 feet to point at Station 1217+46.40, 168.61 feet left; North 56 degrees 31 minutes 50 seconds East a distance of 30.10 feet to point at Station 1217+75.24, 159.98 feet left; North 61 degrees 17 minutes 40 seconds East a distance of 160.88 feet to point at Station 1219+25.00, 101.22 feet left; North 33 degrees 53 minutes 49 seconds East a distance of 276.50 feet to point at Station 1222+00.00, 130.00 feet left; North 55 degrees 31 minutes 03 seconds East a distance of 157.70 feet to point at Station 1223+53.76, 86.58 feet left; North 35 degrees 41 minutes 14 seconds East a distance of 126.80 feet to point at Station 1224+83.50, 90.91 feet left; North 31 degrees 35 minutes 13 seconds West a distance of 25.00 feet to point at Station 1224+93.05, 114.12 feet left; North 33 degrees 38 minutes 52 seconds East a distance of 31.70 feet to point at Station 1225+25.70, 115.58 feet left; South 31 degrees 35 minutes 13 seconds East a distance of 14.22 feet to point at Station 1225+20.13, 102.43 feet left; North 32 degrees 23 minutes 07 seconds East a distance of 26.53 feet to point at Station 1225+47.35, 104.06 feet left; North 30 degrees 34 minutes 47 seconds East a distance of 120.00 feet to point at Station 1226+70.53, 112.88 feet left; North 59 degrees 25 minutes 13 seconds West a distance of 31.00 feet to point at Station 1226+68.68, 143.82 feet left; North 18 degrees 58 minutes 59 seconds East a distance of 103.48 feet to point at Station 1227+73.32, 169.08 feet left; South 71 degrees 28 minutes 49 seconds East a distance of 35.09 feet to point at Station 1227+82.00, 135.00 feet left; North 64 degrees 32 minutes 11 seconds East a distance of 63.87 feet to point at Station 1228+37.25, 100.55 feet left; North 18 degrees 09 minutes 34 seconds East a distance of 64.34 feet to point at Station 1229+01.83, 114.72 feet left; North 50 degrees 12 minutes 27 seconds East a distance of 60.31 feet to point at Station 1229+60.00, 93.85 feet left; North 18 degrees 55 minutes 01 seconds East a distance of 230.32 feet to point at Station 1231+94.46, 129.30 feet left;

South 68 degrees 10 minutes 12 seconds East a distance of 33.99 feet to point at Station 1231+97.00, 95.40 feet left; North 24 degrees 33 minutes 21 seconds East a distance of 161.75 feet to point at Station 1233+86.24, 95.88 feet left; North 67 degrees 44 minutes 06 seconds West a distance of 16.00 feet to point at Station 1233+62.57, 111.88 feet left; North 40 degrees 42 minutes 00 seconds West a distance of 147.14 feet to point at Station 1234+31.01, 243.76 feet left; North 25 degrees 13 minutes 55 seconds East a distance of 300.00 feet to point at Station 1237+49.06, 216.77 feet left; South 64 degrees 46 minutes 03 seconds East a distance of 32.05 feet to point at Station 1237+44.64, 184.99 feet left; North 22 degrees 39 minutes 09 seconds East a distance of 100.90 feet to point at Station 1238+50.01, 175.00 feet left; North 67 degrees 10 minutes 30 seconds East a distance of 72.83 feet to point at Station 1238+97.31, 118.11 feet left; South 74 degrees 52 minutes 05 seconds East a distance of 16.00 feet to point at Station 1238+97.40, 102.11 feet left; North 15 degrees 07 minutes 55 seconds East a distance of 143.69 feet to point at Station 1240+45.00, 100.17 feet left; North 13 degrees 39 minutes 27 seconds East a distance of 46.83 feet to point at Station 1240+93.08, 99.54 feet left; North 10 degrees 50 minutes 45 seconds East a distance of 20.20 feet to point at Station 1241+13.81, 100.08 feet left; North 15 degrees 53 minutes 02 seconds East a distance of 51.53 feet to point at Station 1241+66.57, 96.43 feet left; North 07 degrees 47 minutes 17 seconds East a distance of 103.73 feet to point at Station 1242+72.94, 101.57 feet left; North 09 degrees 41 minutes 48 seconds East a distance of 99.27 feet to point at Station 1243+74.90, 100.48 feet left; North 81 degrees 41 minutes 54 seconds West a distance of 30.02 feet to point at Station 1243+74.90, 130.50 feet left; North 41 degrees 33 minutes 18 seconds West a distance of 40.00 feet to point at Station 1244+03.76, 161.05 feet left; North 05 degrees 33 minutes 56 seconds East a distance of 382.59 feet to point at Station 1248+02.84, 166.15 feet left; North 44 degrees 15 minutes 46 seconds East a distance of 211.84 feet to point at Station 1250+27.70, 150.50 feet left; North 63 degrees 26 minutes 48 seconds East a distance of 50.00 feet to point at Station 1250+48.82, 104.84 feet left; North 63 degrees 26 minutes 48 seconds East a distance of 53.80 feet to point at Station 1250+70.90, 55.58 feet left; North 10 degrees 54 minutes 48 seconds West a distance of 168.23 feet to point at Station 1252+38.61, 76.78 feet left; North 03 degrees 07 minutes 40 seconds West a distance of 35.10 feet to point at Station 1252+73.91, 76.28 feet left; North 30 degrees 45 minutes 25 seconds West a distance of 141.28 feet to point at Station 1254+00.00, 140.00 feet left; North 04 degrees 59 minutes 13 seconds West a distance of 193.96 feet to point at Station 1255+93.93, 143.52 feet left; North 04 degrees 59 minutes 23 seconds West a distance of 356.13 feet to point at Station 1259+50.00, 150.00 feet left; North 19 degrees 36 minutes 27 seconds East a distance of 137.18 feet to point at Station 1260+75.75, 95.18 feet left; North 44 degrees 02 minutes 25 seconds West a distance of 80.00 feet to point at Station 1261+55.75, 95.31 feet left; North 41 degrees 13 minutes 26 seconds East a distance of 56.84 feet to point at Station 1261+95.82, 55.00 feet left; North 03 degrees 56 minutes 50 seconds West a distance of 308.99 feet to point at Station 1265+04.81, 55.00 feet left; North 03 degrees 56 minutes 50 seconds West a distance of 48.85 feet to point at Station 1265+53.66, 55.00 feet left; North 07 degrees 49 minutes 39 seconds West a distance of 204.66 feet to point at Station 1267+57.86, 68.85 feet left, said point being at the intersection of the LA line of SR 7 and the corporation line of the City of Martins Ferry;

Thence leaving said westerly LA line and continuing along said corporation line, North 86 degrees 01 minutes 32 seconds East a distance of 121.35 feet to point at the intersection of said corporation line and the easterly LA line of said State Route 7 at Station 1267+57.91, 52.50 feet right;

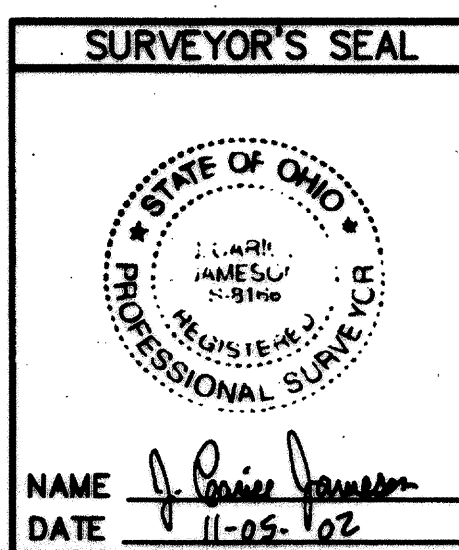
Thence southerly, continuing along said easterly LA line, the following courses:

South 03 degrees 56 minutes 50 seconds West a distance of 407.91 feet to point at Station 1263+50.00, 52.50 feet right; South 03 degrees 56 minutes 49 seconds East a distance of 997.90 feet to point at Station 1253+52.10, 52.50 feet right; South 03 degrees 20 minutes 20 seconds East a distance of 98.10 feet to point at Station 1252+54.01, 51.46 feet right; Curve to the right, radius = 4620.69 feet, with a chord bearing of South 00 degrees 48 minutes 25 seconds West a distance of 570.77 feet to point at Station 1246+89.73, 37.30 feet right; South 12 degrees 59 minutes 30 seconds East a distance of 41.95 feet to point at Station 1246+50.61, 50.62 feet right; Curve to the right, radius = 4633.34 feet, with a chord bearing of South 06 degrees 04 minutes 08 seconds West a distance of 205.00 feet to point at Station 1244+47.74, 55.35 feet right; Curve to the right, radius = 4633.34 feet, with a chord bearing of South 10 degrees 31 minutes 43 seconds West a distance of 365.23 feet to point at Station 1240+83.79, 52.32 feet right; South 15 degrees 50 minutes 19 seconds West a distance of 144.00 feet to point at Station 1239+41.72, 47.03 feet right; South 15 degrees 50 minutes 19 seconds West a distance of 72.50 feet to point at Station 1238+70.10, 46.40 feet right; Curve to the right, radius = 3765.50 feet, with a chord bearing of South 21 degrees 58 minutes 34 seconds West a distance of 806.72 feet to point at Station 1230+72.96, 44.65 feet right; South 27 degrees 16 minutes 43 seconds West a distance of 258.78 feet to point at Station 1228+16.74, 55.87 feet right; Curve to the right, radius = 3568.75 feet, with a chord bearing of South 30 degrees 22 minutes 28 seconds West a distance of 282.61 feet to point at Station 1225+39.29, 72.54 feet right; South 36 degrees 22 minutes 07 seconds West a distance of 89.94 feet to point at Station 1224+51.03, 72.74 feet right; Curve to the right, radius = 3565.10 feet, with a chord bearing of South 37 degrees 09 minutes 58 seconds West a distance of 404.85 feet to point at Station 1220+50.23, 87.48 feet right; South 40 degrees 35 minutes 19 seconds West a distance of 566.90 feet to point at Station 1214+83.38, 80.39 feet right; Curve to the right, radius = 1478.95 feet, with a chord bearing of South 44 degrees 59 minutes 19 seconds West a distance of 201.81 feet to point at Station 1212+82.53, 62.40 feet right; South 46 degrees 37 minutes 33 seconds West a distance of 76.19 feet to point at Station 1212+06.87, 53.44 feet right; North 39 degrees 52 minutes 17 seconds West a distance of 235.70 feet to point at Station 1209+70.10, 52.65 feet right; Curve to the right, radius = 1544.95 feet, with a chord bearing of North 56 degrees 07 minutes 15 seconds East a distance of 192.25 feet to point at Station 1211+55.62, 107.20 feet right; South 39 degrees 04 minutes 39 seconds East a distance of 60.38 feet to point at Station 1211+44.05, 166.46 feet right; South 38 degrees 58 minutes 35 seconds West a distance of 738.02 feet to point at Station 1203+87.31, 126.43 feet right; South 38 degrees 58 minutes 35 seconds West a distance of 502.27 feet to point at Station 1198+88.20, 70.20 feet right; South 23 degrees 59 minutes 34 seconds West a distance of 54.02 feet to point at Station 1198+34.78, 78.24 feet right; South 38 degrees 58 minutes 35 seconds West a distance of 114.08 feet to point at Station 1197+21.28, 65.48 feet right; Curve to the left, radius = 3835.83 feet, with a chord bearing of South 35 degrees 00 minutes 33 seconds West a distance of 530.71 feet to point at Station 1191+91.61, 42.69 feet right; South 31 degrees 02 minutes 00 seconds West a distance of 734.48 feet to point at Station 1184+61.39, 71.96 feet right; South 35 degrees 23 minutes 37 seconds West a distance of 432.04 feet to point at Station 1180+35.78, 91.73 feet right; South 43 degrees 36 minutes 11 seconds West a distance of 385.57 feet to point at Station 1176+56.01, 81.22 feet right; South 47 degrees 11 minutes 24 seconds West a distance of 823.59 feet to point at Station 1168+36.60, 64.99 feet right; Curve to the left, radius = 2878.00 feet, with a chord bearing of South 43 degrees 17 minutes 51 seconds West a distance of 414.00 feet to point at Station 1164+19.11, 60.20 feet right; South 39 degrees 10 minutes 23 seconds West a distance of 632.95 feet to point at Station 1157+86.77, 88.02 feet right; South 40 degrees 16 minutes 01 seconds West a distance of 363.20 feet to point at Station 1154+23.68, 97.05 feet right; South 43 degrees 56 minutes 50 seconds West a distance of 276.70 feet to point at Station 1151+47.20, 86.16 feet right; South 48 degrees 32 minutes 24 seconds West a distance of 40.03 feet to point at Station 1151+07.45, 81.39 feet right; South 48 degrees 32 minutes 24 seconds West a distance of 248.27 feet to point at Station 1148+60.96, 51.78 feet right; South 44 degrees 41 minutes 33 seconds West a distance of 401.21 feet to point at Station 1144+62.45, 38.00 feet right; South 45 degrees 09 minutes 34 seconds West a distance of 75.17 feet to point at Station 1143+87.28, 38.00 feet right; South 45 degrees 09 minutes 34 seconds West a distance of 433.40 feet to point at Station 1139+53.88, 38.00 feet right; South 45 degrees 09 minutes 34 seconds West a distance of 103.88 feet to point at Station 1138+50.00, 38.00 feet right; South 45 degrees 09 minutes 34 seconds West a distance of 85.00 feet to point at Station 1137+65.00, 38.00 feet right; South 45 degrees 09 minutes 34 seconds West a distance of 30.00 feet to point at Station 1137+35.00, 38.00 feet right; South 45 degrees 09 minutes 34 seconds West a distance of 102.58 feet to point at Station 1136+32.42, 38.00 feet right; Curve to the left, radius = 2879.93 feet, with a chord bearing of South 39 degrees 12 minutes 24 seconds West a distance of 384.33 feet to point at Station 1132+50.45, 77.83 feet right; South 44 degrees 54 minutes 52 seconds West a distance of 507.79 feet to point at Station 1127+42.66, 80.00 feet right; South 45 degrees 09 minutes 34 seconds West a distance of 53.59 feet to point at Station 1126+89.07, 80.00 feet right; South 47 degrees 38 minutes 28 seconds West a distance of 108.54 feet to point at Station 1125+80.64, 75.30 feet right; Thence leaving said easterly LA line, North 86 degrees 11 minutes 34 seconds West a distance of 179.71 feet to the Place of Beginning and containing 53.623 acres, more or less.

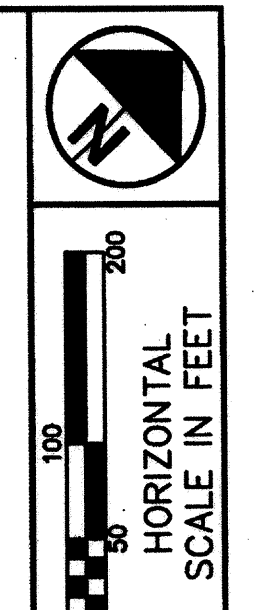
This description prepared by J. Corice Jameson, P.S., Reg. No. 8166, in October of 2002 using the State of Ohio Department of Highways BEL-7-20.74 Right of Way Plans. Stations and offsets cited in this description are based on the Centerline of Survey Plat for said project dated 6/19/64. The intent of this description is to detach from the corporation of the City of Martins Ferry the entire area within the Limited Access Lines of State Route 7 with the exception of a 5 foot strip of land along the common corporation line between the Village of Bridgeport and the City of Martins Ferry.

DETACHMENT PLAN - DESCRIPTION
CITY OF MARTINS FERRY
BELMONT COUNTY, OHIO

CALCULATED
JCU
CHECKED



2
5



CALCULATED MVC
CHECKED JCU

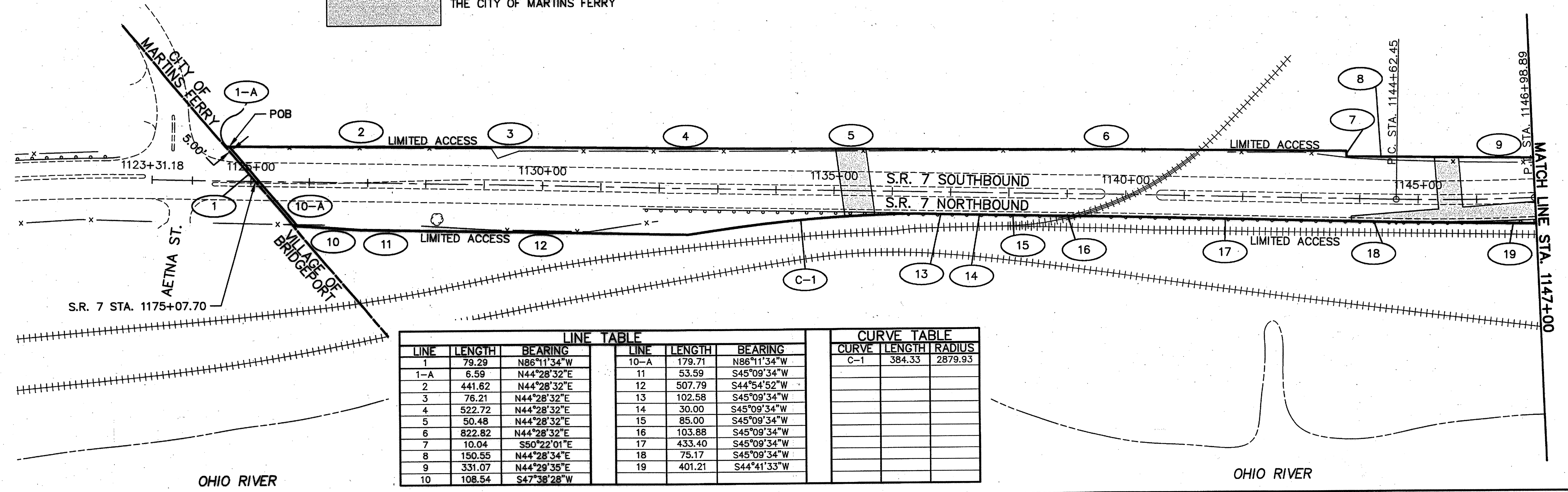
DETACHMENT PLAN - PLAT

CITY OF MARTINS FERRY
BELMONT COUNTY, OHIO

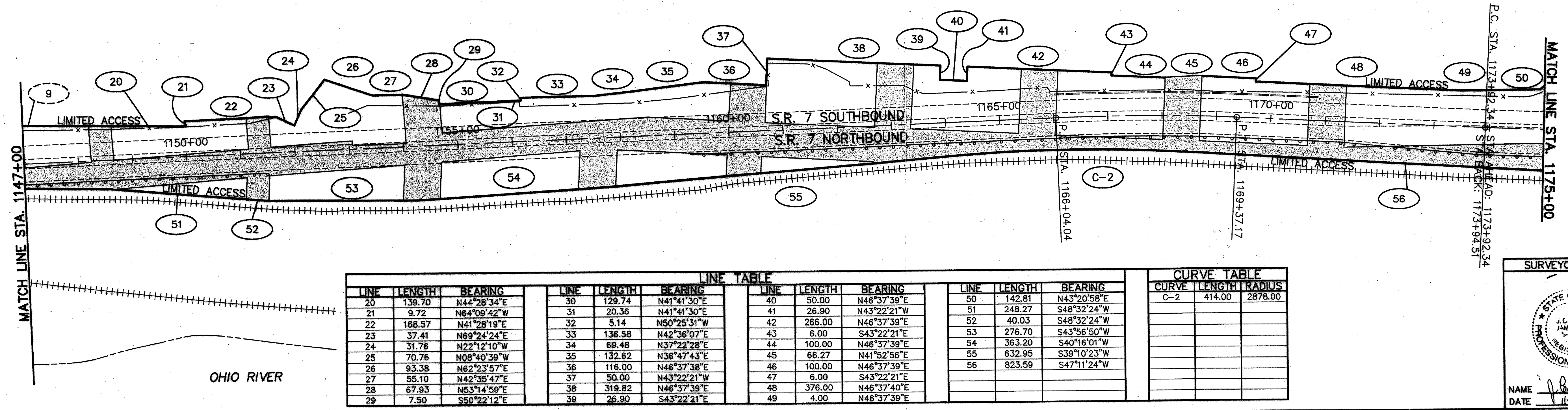
3
5

LEGEND

PROPERTY OWNED BY THE CITY OF MARTINS FERRY



LINE TABLE			CURVE TABLE		
LINE	LENGTH	BEARING	LINE	LENGTH	BEARING
1	79.29	N86°11'34"W	10-A	179.71	N86°11'34"W
1-A	6.59	N44°28'32"E	11	53.59	S45°09'34"W
2	441.62	N44°28'32"E	12	507.79	S44°54'52"W
3	76.21	N44°28'32"E	13	102.58	S45°09'34"W
4	522.72	N44°28'32"E	14	30.00	S45°09'34"W
5	50.48	N44°28'32"E	15	85.00	S45°09'34"W
6	822.82	N44°28'32"E	16	103.88	S45°09'34"W
7	10.04	S50°22'01"E	17	433.40	S45°09'34"W
8	150.55	N44°28'34"E	18	75.17	S45°09'34"W
9	331.07	N44°29'35"E	19	401.21	S44°41'33"W
10	108.54	S47°38'28"W			
			C-1	384.33	2879.93

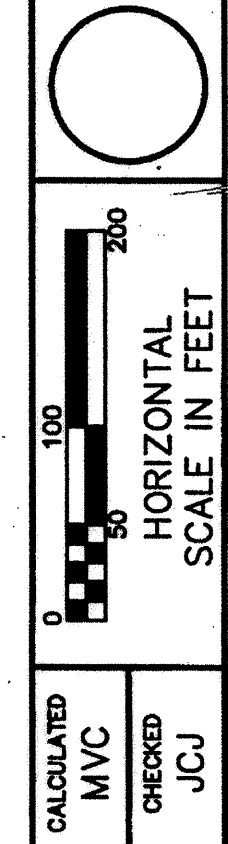


LINE TABLE			CURVE TABLE		
LINE	LENGTH	BEARING	LINE	LENGTH	BEARING
20	139.70	N44°28'34"E	30	129.74	N41°41'30"E
21	9.72	N64°09'42"W	31	20.36	N41°41'30"E
22	168.57	N41°28'19"W	32	5.14	N50°25'31"W
23	37.41	N69°24'24"E	33	136.58	N42°36'07"E
24	31.76	N22°12'10"W	34	69.48	N37°22'28"E
25	70.76	N08°40'39"W	35	132.62	N36°47'43"E
26	93.38	N62°23'57"E	36	116.00	N46°37'38"E
27	55.10	N42°35'47"E	37	50.00	N43°22'21"W
28	67.93	N53°14'59"E	38	319.82	N46°37'39"E
29	7.50	S50°22'12"E	39	26.90	S43°22'21"E
			40	50.00	N46°37'39"E
			41	26.90	N43°22'21"W
			42	266.00	N46°37'39"E
			43	6.00	S43°22'21"E
			44	100.00	N46°37'39"E
			45	66.27	N41°52'56"E
			46	100.00	N46°37'39"E
			47	6.00	S43°22'21"E
			48	376.00	N46°37'40"E
			49	4.00	N46°37'39"E
			50	142.81	N43°20'58"E
			51	248.27	S48°32'24"W
			52	40.03	S48°32'24"W
			53	276.70	S43°56'50"W
			54	363.20	S40°16'01"W
			55	632.95	S39°10'23"W
			56	823.59	S47°11'24"W
			C-2	414.00	2878.00

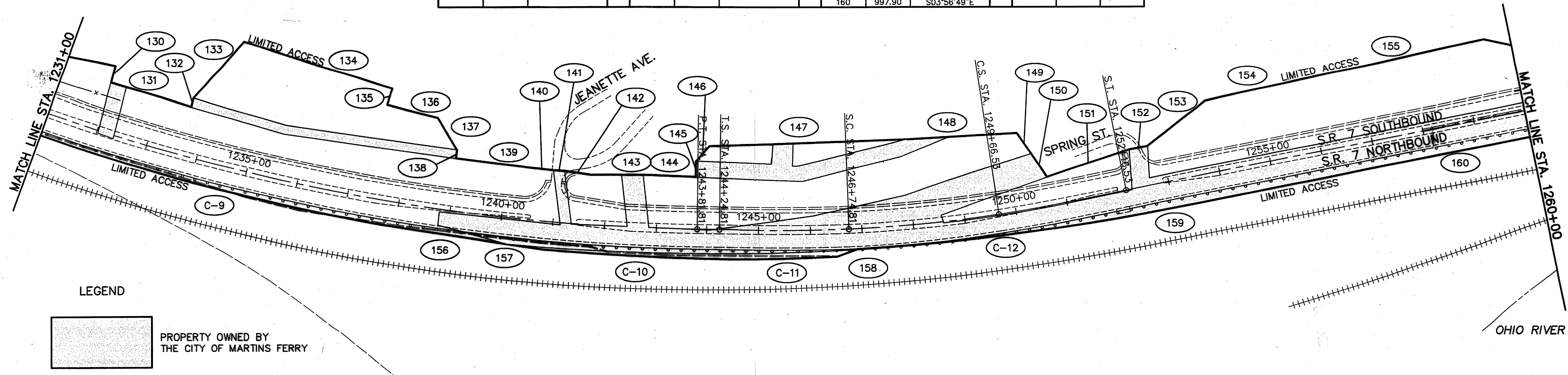
SURVEYOR'S SEAL

NAME: J. Carroll Jameson
DATE: 11-05-02

LINE TABLE			CURVE TABLE		
LINE	LENGTH	BEARING	CURVE	LENGTH	RADIUS
130	33.99	S68°10'12"E	C-9	806.72	3765.50
131	161.75	N24°33'21"E	C-10	365.23	4633.34
132	16.00	N67°44'06"W	C-11	205.00	4633.34
133	147.14	N40°42'00"W	C-12	570.77	4620.69
134	300.00	N25°13'55"E			
135	32.05	S64°46'03"E			
136	100.90	N22°39'09"E			
137	72.83	N67°10'30"E			
138	16.00	S74°52'05"E			
139	143.69	N15°07'55"E			
140	48.83	N13°39'27"E			
141	20.20	N10°50'45"E			
142	51.53	N15°53'02"E			
143	103.73	N07°47'17"E			
144	99.27	N09°41'48"E			
145	30.02	N81°41'54"W			
146	40.00	N41°33'18"W			
147	382.59	N05°33'56"E			
148	211.84	N04°15'46"E			
149	50.00	N63°26'48"E			
150	53.80	N63°26'48"E			
151	168.23	N10°54'48"W			
152	35.10	N03°07'40"W			
153	141.28	N30°45'25"W			
154	193.96	N04°59'13"W			
155	356.13	N04°59'23"W			
156	72.50	S15°50'19"W			
157	144.00	S15°50'19"W			
158	41.95	S12°59'30"E			
159	98.10	S03°20'20"E			
160	997.90	S03°56'49"E			



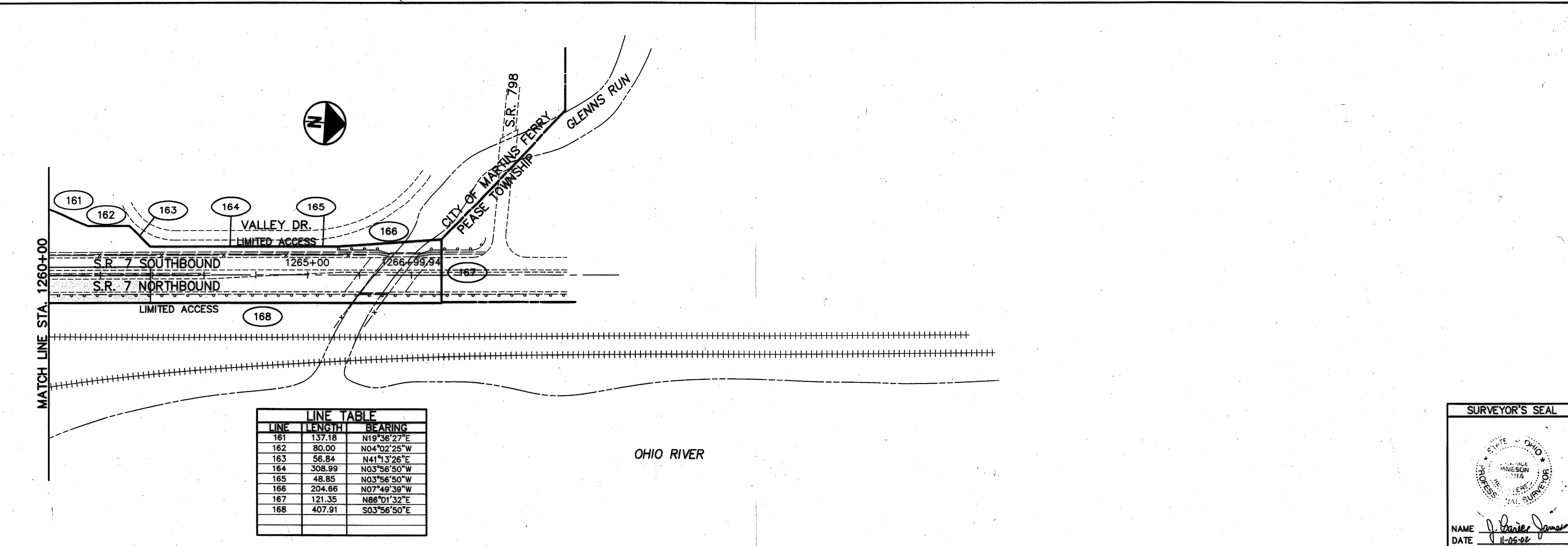
CALCULATED MVC CHECKED JCU



LEGEND

PROPERTY OWNED BY THE CITY OF MARTINS FERRY

DETACHMENT PLAN - PLAT



LINE TABLE		
LINE	LENGTH	BEARING
161	137.18	N19°36'27"E
162	80.00	N04°02'25"W
163	56.84	N41°13'26"E
164	308.99	N03°56'50"W
165	48.85	N03°56'50"W
166	204.66	N07°49'39"W
167	121.35	N86°01'32"E
168	407.91	S03°56'50"E

OHIO RIVER

SURVEYOR'S SEAL

NAME: Daniel J. Jamar
DATE: 11-05-02

CITY OF MARTINS FERRY
BELMONT COUNTY, OHIO

5
5