

CONTRACT NO. 240-03-1

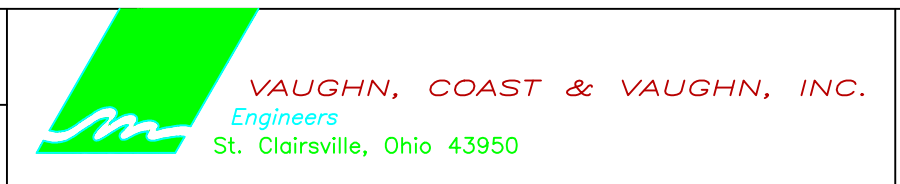
THIS DOCUMENT WAS ORIGINALLY ISSUED BY "JEFFREY A. VAUGHN" on Oct. 29, 2004. THIS DOCUMENT IS NOT CONSIDERED A SEALED DOCUMENT

WASTE WATER LINE 1834.09 FT. / .35 MI. (2-24-23) JGH

DRAWINGS OF RECORD 10/04

NO.	DATE	REVISION

DRAWN BY:
DAVID STEWART
CHECKED BY:
ERNIE BURKY



BELMONT COUNTY SANITARY SEWER DISTRICT
EXIT 208/STATE ROUTE 149 WASTEWATER COLLECTION SYSTEM
BELMONT COUNTY, OHIO

EXIT 208/STATE ROUTE 149 WASTEWATER COLLECTION SYSTEM
LINE A (MH-A12 TO MH-A17)
LINE G

SCALE: 1"=50' (22"x34")
1"=100' (11"x17")
DATE: AUGUST 2003
PROJECT NO. 03009

