

STATIC GRADE LINE (SGL) THIS DWG: 1283
 HYDRAULIC GRADE LINE (HGL) THIS DWG: 1401

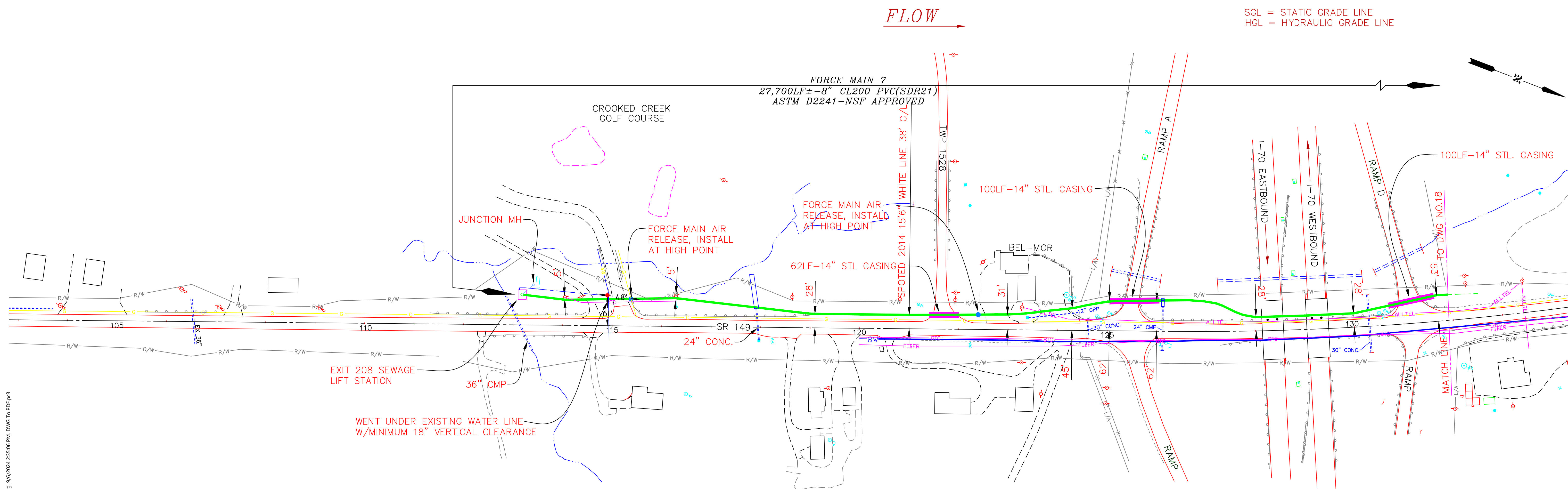
HYDRAULIC GRADE LINE MAPS

The Hydraulic Grade Line (HGL) noted at each map location is the calculated head condition based upon the simultaneous operation of the six existing sewage lift stations (Oak View, Fox Commerce Park, Airport Road, Jamboree in the Hills, Pine Lake, and Union Local School District); with consideration for some additional flows into the force main at Country Club Rd (CR56), Friends Church Rd (Twp 273) SR331/US40 intersection and at the provided Morristown tie-in.

As other pumps are connected to this system, the force main hydraulic conditions will change. Designers are cautioned to anticipate system head conditions which will vary, depending upon the instantaneous pumping activity of the various pumping stations.

Adding new pump stations to this force main system may have a significant effect upon the operation of the existing pumps. **This evaluation does not address changes to system head conditions which occur as other pumps are added to this system.**

SGL = STATIC GRADE LINE
 HGL = HYDRAULIC GRADE LINE



THIS DOCUMENT WAS ORIGINALLY ISSUED BY "JEFFREY A. VAUGHN" on Dec. 12, 2003. THIS DOCUMENT IS NOT CONSIDERED A SEALED DOCUMENT

WASTE WATER LINE 1881.26 FT. / .36 MI. (2-23-23) JGH

DRAWINGS OF RECORD 12/02

NO.	DATE	REVISION	DRAWN BY:	ENGINEER:	PROJECT NO.
			DAVID STEWART	VAUGHN, COAST & VAUGHN, INC. Engineers St. Clairsville, Ohio 43950 Phone: (740) 695-7256	00016
			CHECKED BY:	BELMONT COUNTY SANITARY SEWER DISTRICT STATE ROUTES 149 AND 40 FORCE MAINS BELMONT COUNTY, OHIO	DATE:
			JEFFREY A. VAUGHN	STATE ROUTES 149 AND 40 FORCE MAINS ALONG ST. ROUTE 149 GOING NORTH FORCE MAIN 7	SEPT. 2000
				SCALE: 1"=100' (22"x34") 1"=200' (11"x17")	DRAWING NO. 17

C:\ATLAS-SEWER\SEWER DISTRICT NO.2\2001 US-40 WEST SEWER FORCE MAINS-ASBUILT\SIMG17.SR-149 TO Exit 208.dwg, 9/16/2024, 2:55:06 PM, DWG TO PDF.PC3