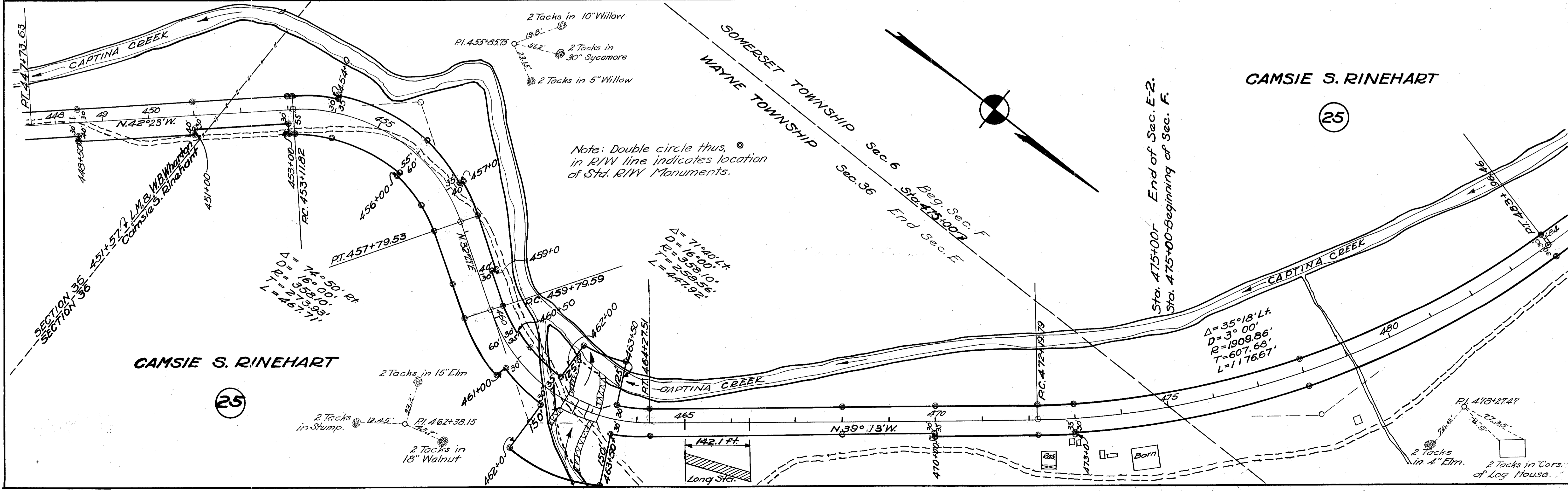
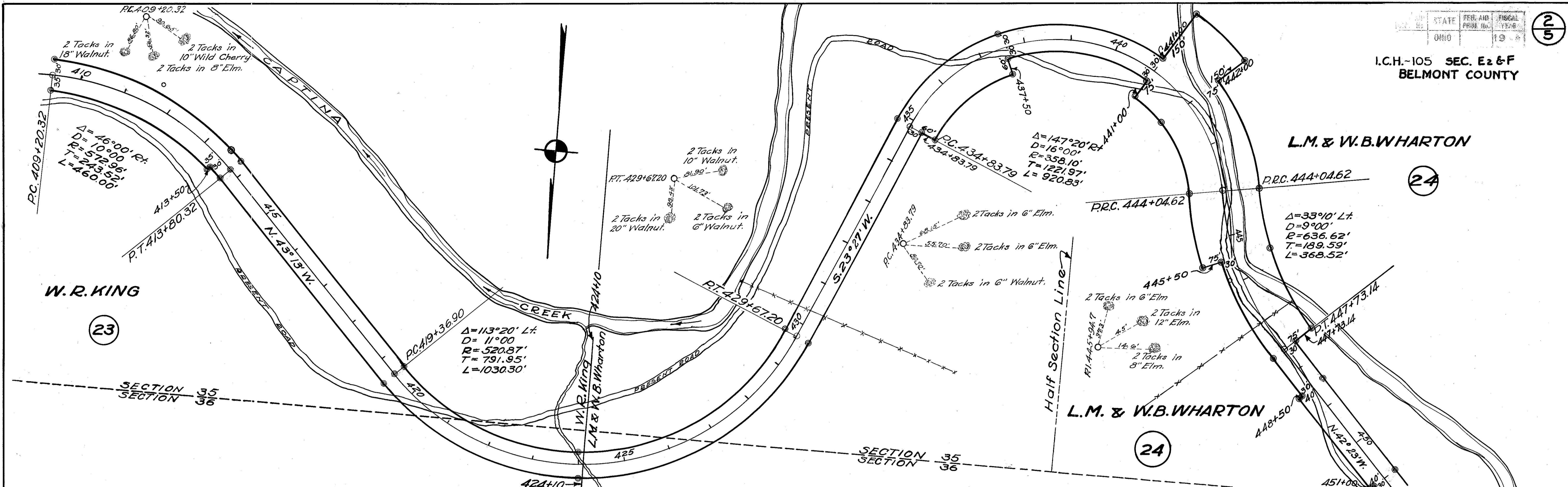


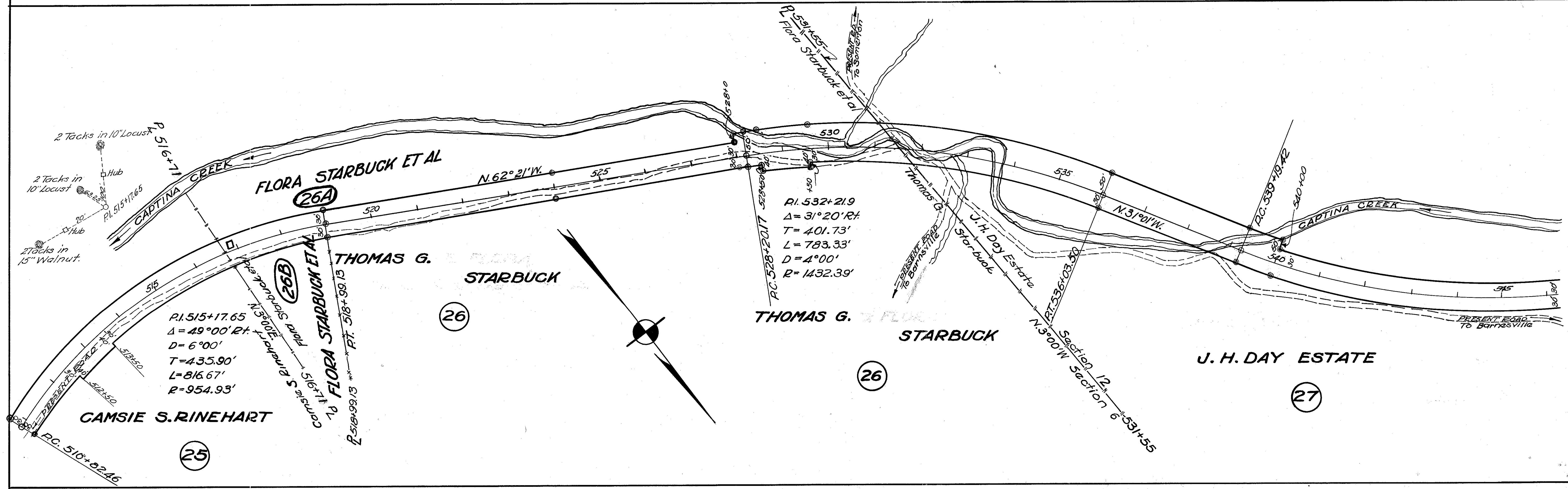
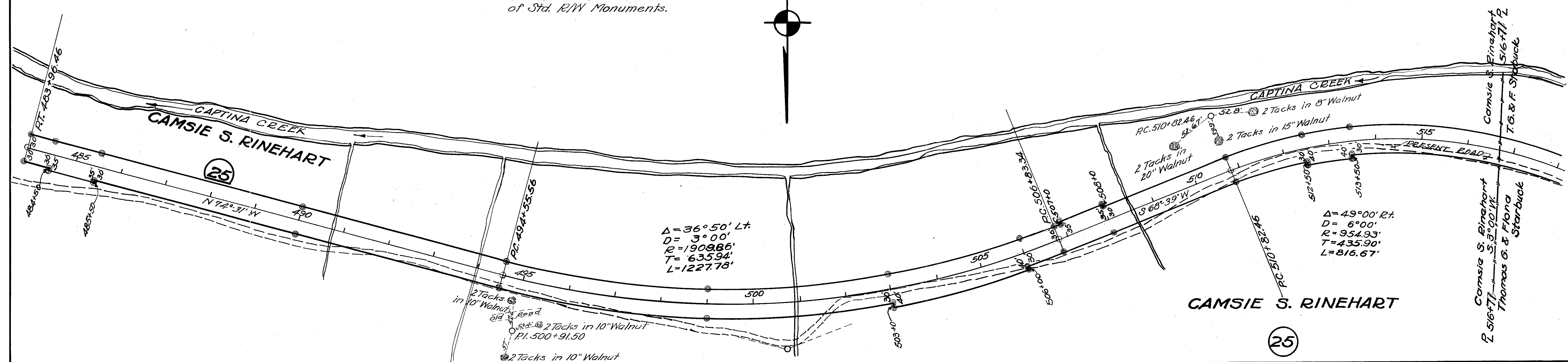
Note: Double circle, thus \odot in R/W line indicates location of Std. R/W Monument.

I.C.H.-105 SEC. E2 & F
BELMONT COUNTY



I.C.H.105 SEC. E2 & F
BELMONT COUNTY

Note: Double circle, thus ©
in R/W line indicates location
of Std. R/W Monuments.



Note: Double circle, thus in R/W line indicates location of Std. R/W Monuments.

J.H. DAY ESTATE

27

PI. 551+26.68
 $\Delta=80^{\circ}15' Lt$
 $D=4^{\circ}00'$
 $T=1207.26'$
 $L=2006.25'$
 $R=1432.39'$

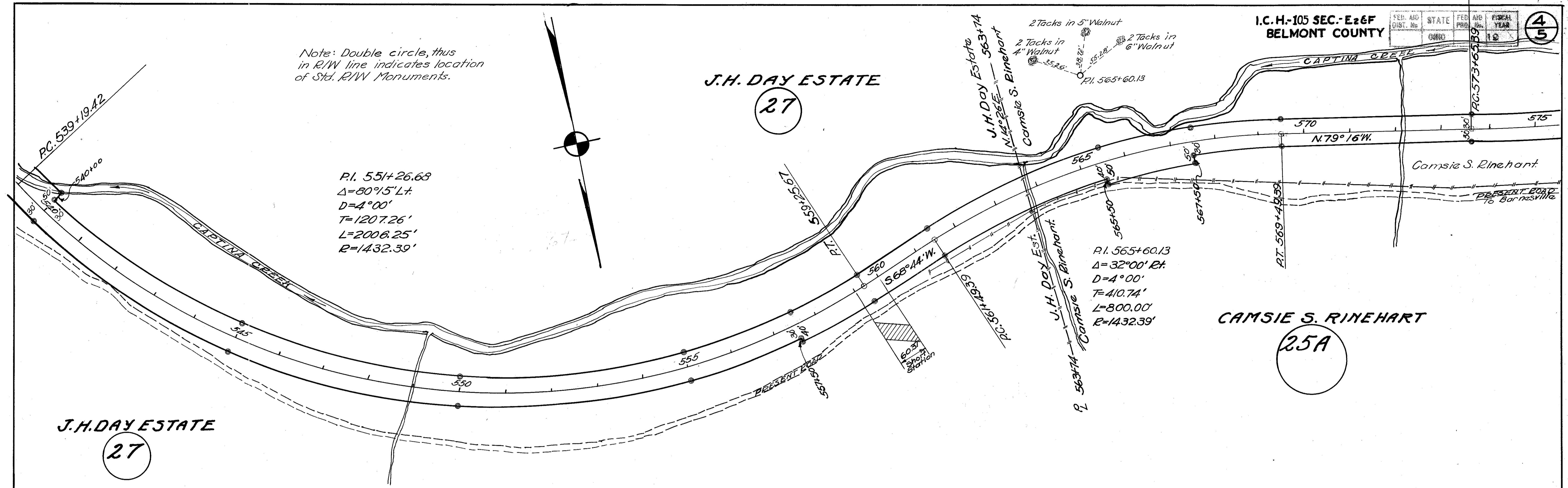
PI. 565+60.13
 $\Delta=32^{\circ}00' Rt$
 $D=4^{\circ}00'$
 $T=410.74'$
 $L=800.00'$
 $R=1432.39'$

CAMSIE S. RINEHART

25A

J.H. DAY ESTATE

27



P.W. PLUMLEY

28

$\Delta=16^{\circ}00' Lt$
 $D=2^{\circ}00'$
 $T=402.61'$
 $L=800.00'$
 $R=2864.79'$

$\Delta=19^{\circ}00' Lt$
 $D=2^{\circ}00'$
 $T=479.39'$
 $L=950.00'$
 $R=2864.79'$

$\Delta=41^{\circ}00' Rt$
 $D=8^{\circ}00'$
 $T=267.90'$
 $L=512.50'$
 $R=716.20'$

CAMSIE S. RINEHART

25A

P.W. PLUMLEY

28

Note: Double circle, thus in R/W line indicates location of Std. R/W Monument.

