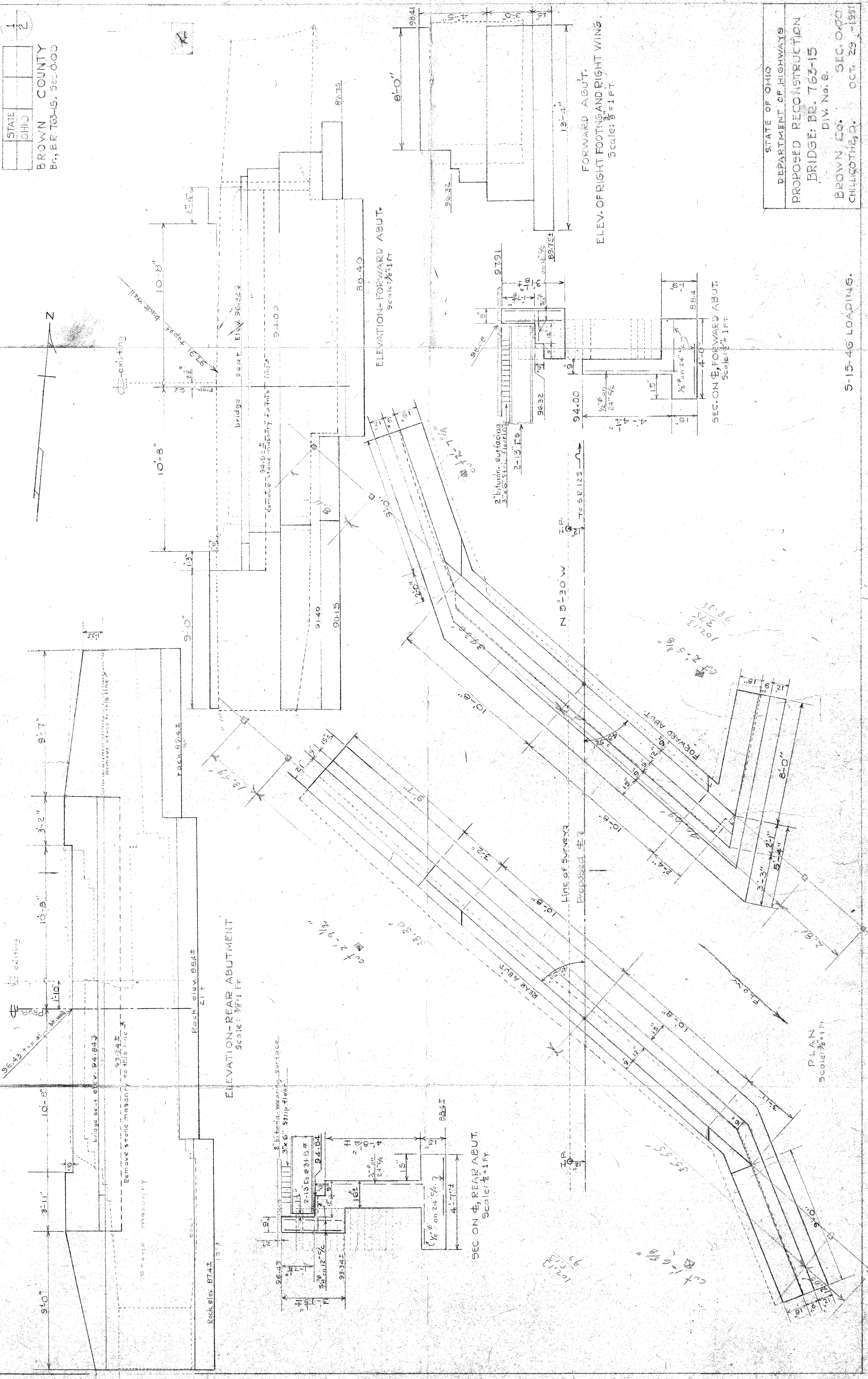


6723 07

STATE	OHIO
BROWN COUNTY	
BR., BR 763-15, SEC. 0-00	

1	2
---	---



FORWARD ABUT.  
ELEV. OF RIGHT FOOTING AND RIGHT WING  
Scale: 3/8" = 1 FT.

SEC. ON 3, FORWARD ABUT.  
Scale: 3/8" = 1 FT.

SEC. ON 4, REAR ABUT.  
Scale: 3/8" = 1 FT.

PLAN  
Scale: 3/8" = 1 FT.

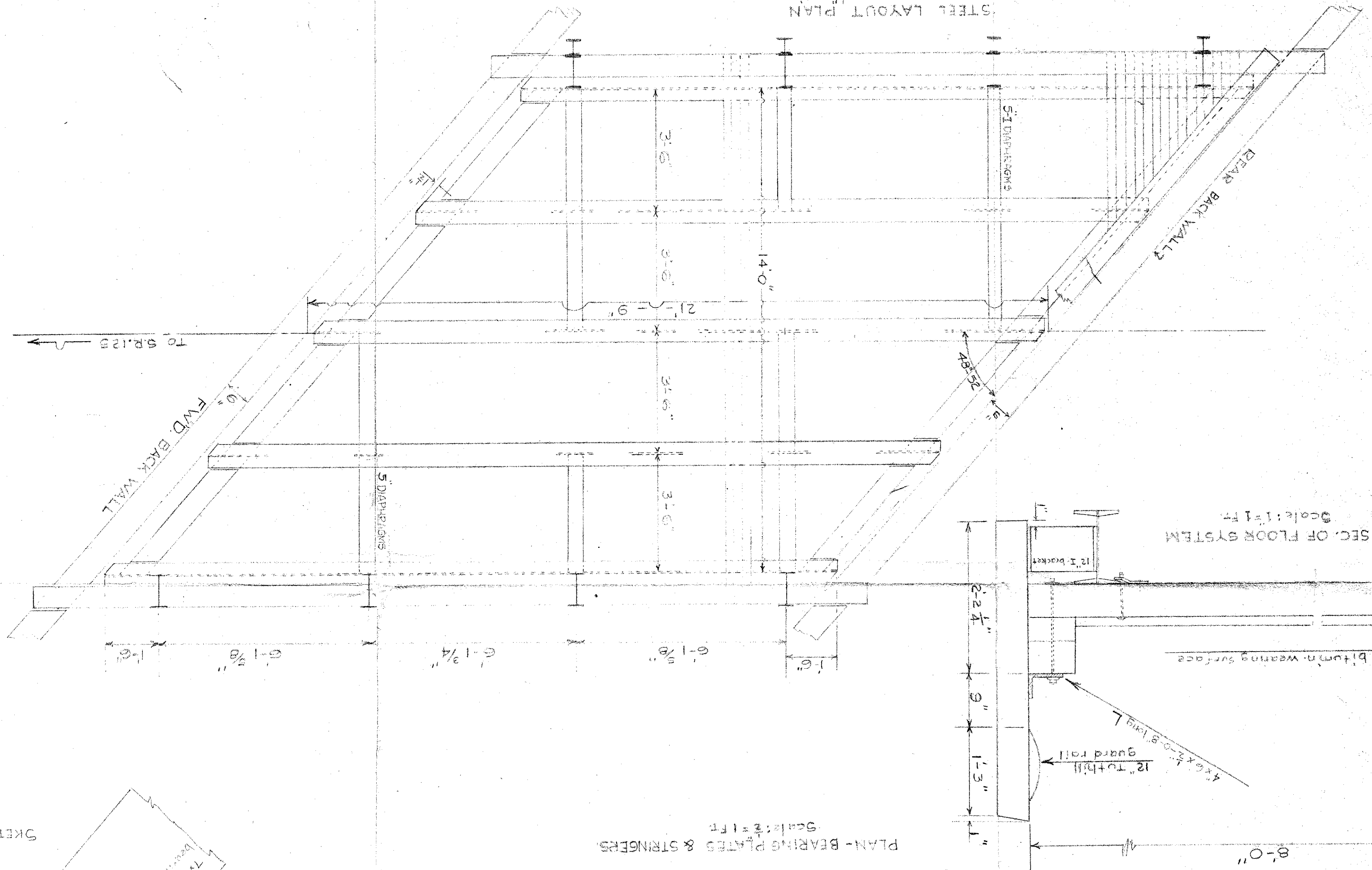
STATE OF OHIO  
DEPARTMENT OF HIGHWAYS  
PROPOSED RECONSTRUCTION  
BRIDGE: BR. 763-15  
DIV. No. 9.  
BROWN CO. SEC. 0-00  
CHILLICOTHE, O. OCT. 29 - 1931

5-15-46 LOADING.

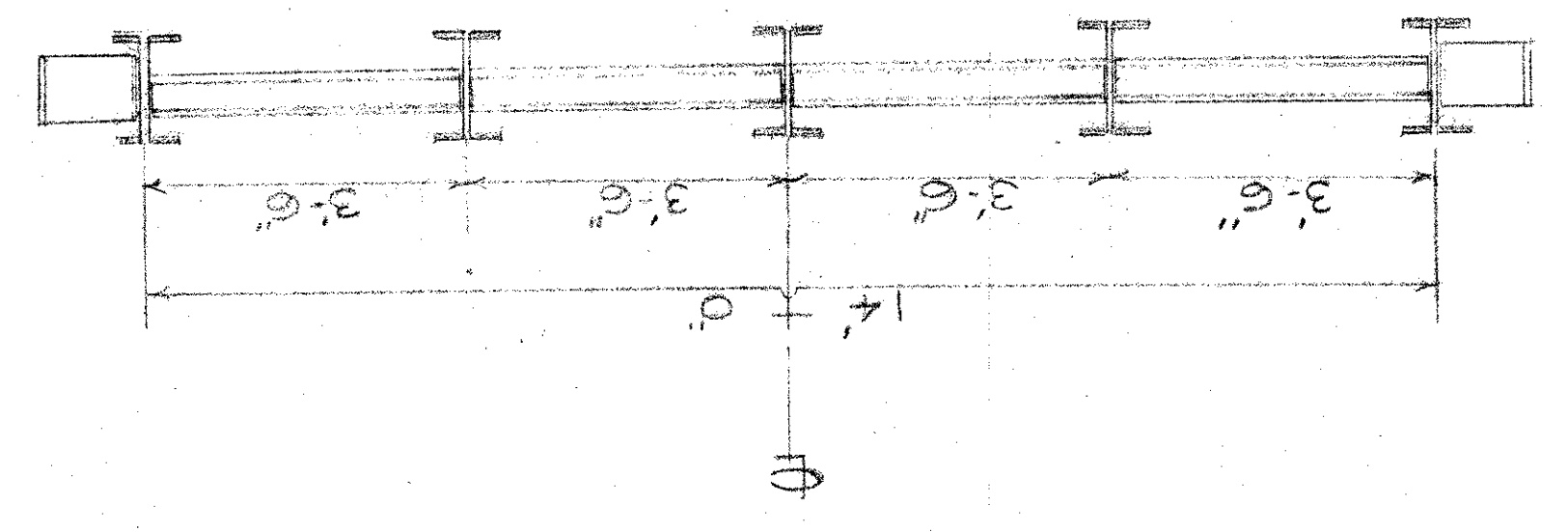
BRIDGE: BR. 763-15  
 BROWN CO.  
 SEC. 0.00  
 DIV. 9  
 CHILICOTHE, OHIO, OCT. 29-1931

Bridge steel to be in place before conc. back walls are poured.  
 Construction joints to be made by use of 2"x4" laid flat.  
 Reinf. steel to be placed according to Division Bridge Engrs. instructions.  
 Concrete used shall be class E.  
 Bituminous surface to extend over full width of strip floor.

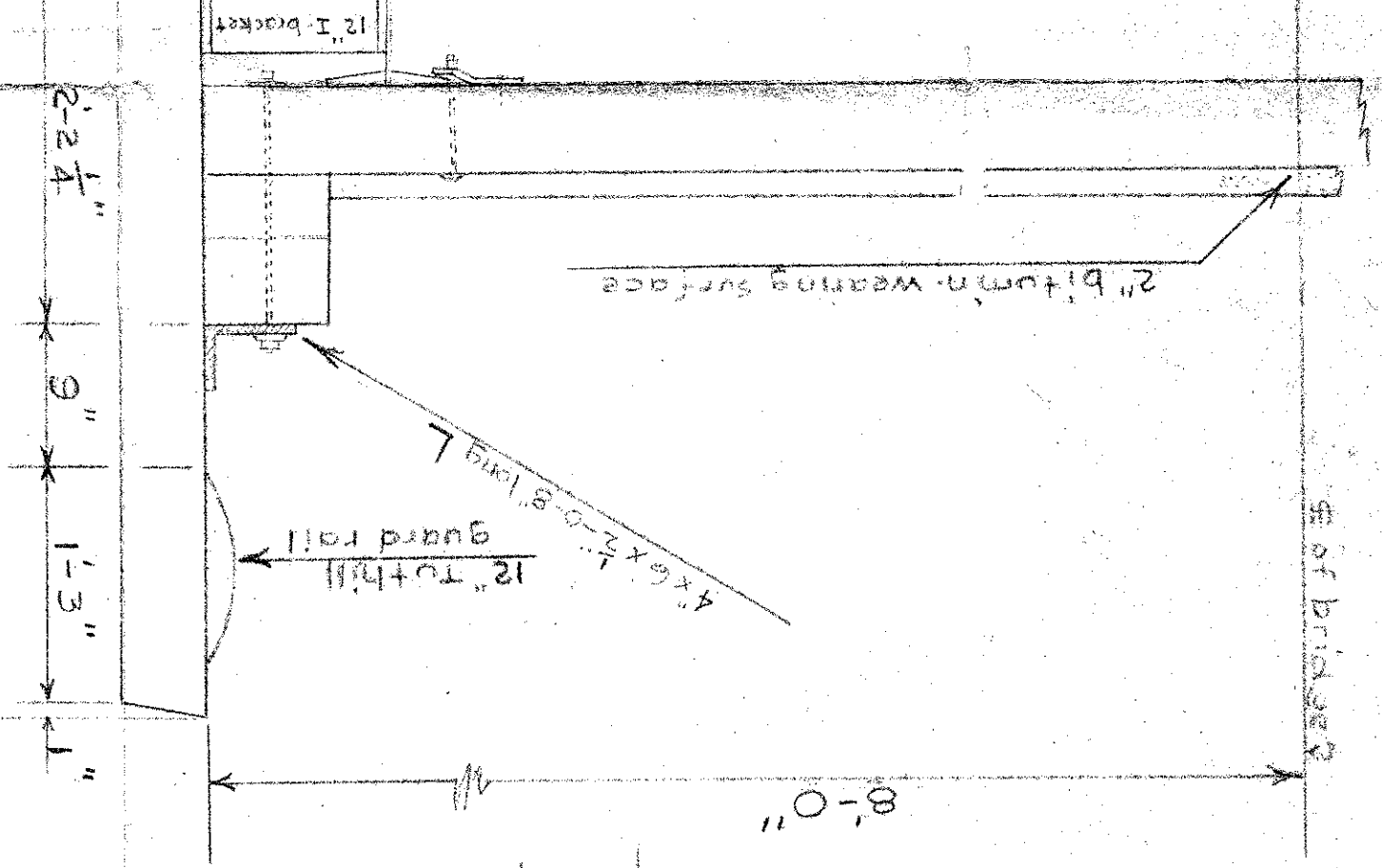
STEEL LAYOUT PLAN  
 Scale: 3/8" = 1' FT.



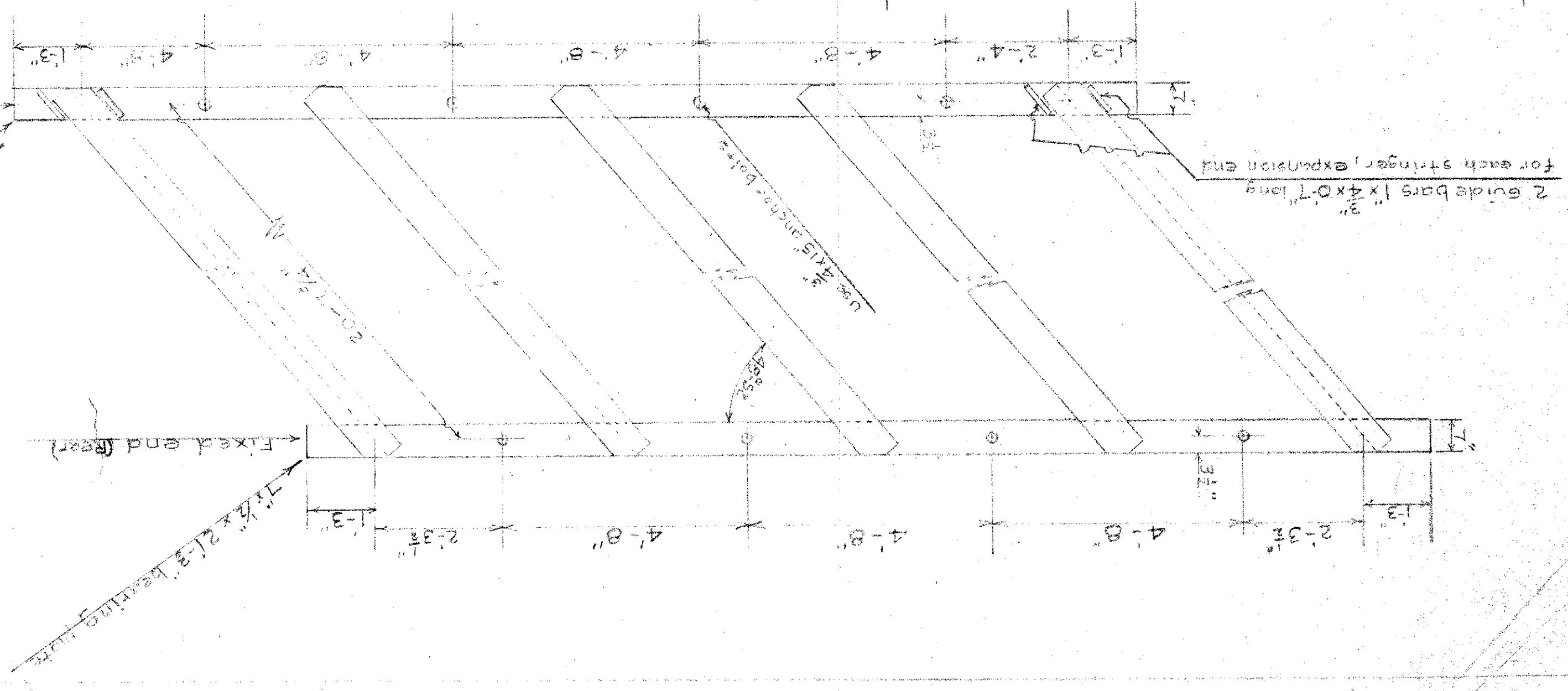
SECTION ACROSS FLOOR STRINGERS  
 Scale: 3/8" = 1' FT.



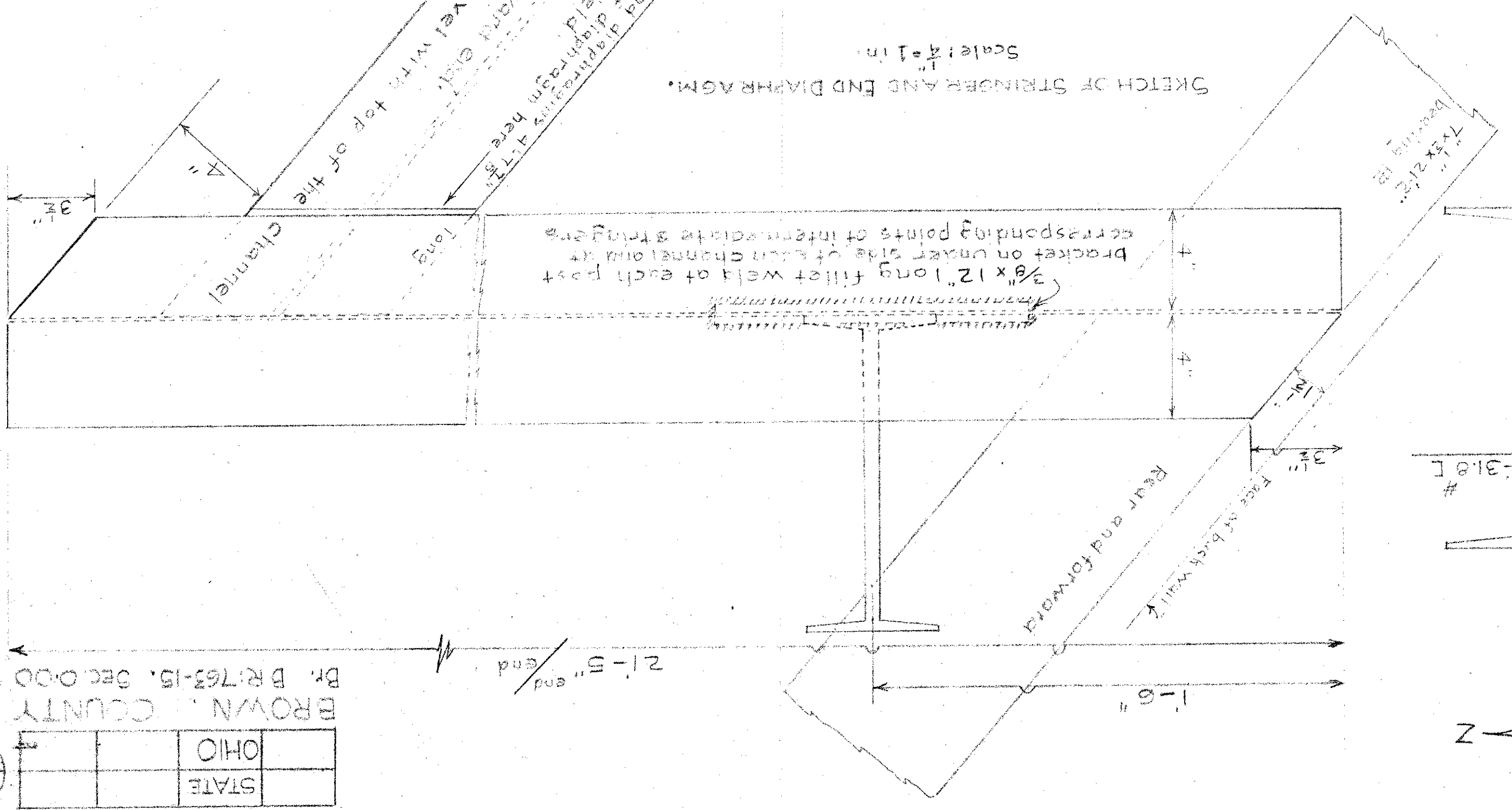
HALF SEC. OF FLOOR SYSTEM  
 Scale: 1/8" = 1' FT.



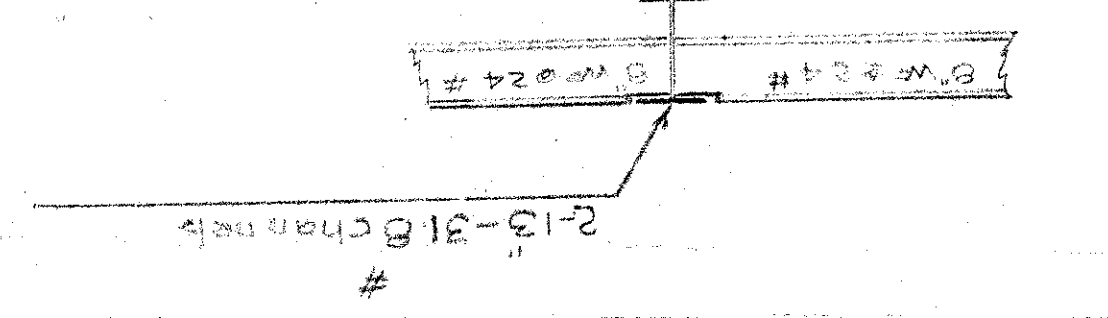
PLAN-BEARING PLATES & STRINGERS  
 Scale: 3/8" = 1' FT.



SKETCH OF STRINGER AND END DIAPHRAGM.  
 Scale: 1/4" = 1' FT.



Sketch of B.W. end diaphragm framing



BROWN COUNTY	
STATE	OHIO

BR. 763-15, SEC. 0.00  
 21'-5" end