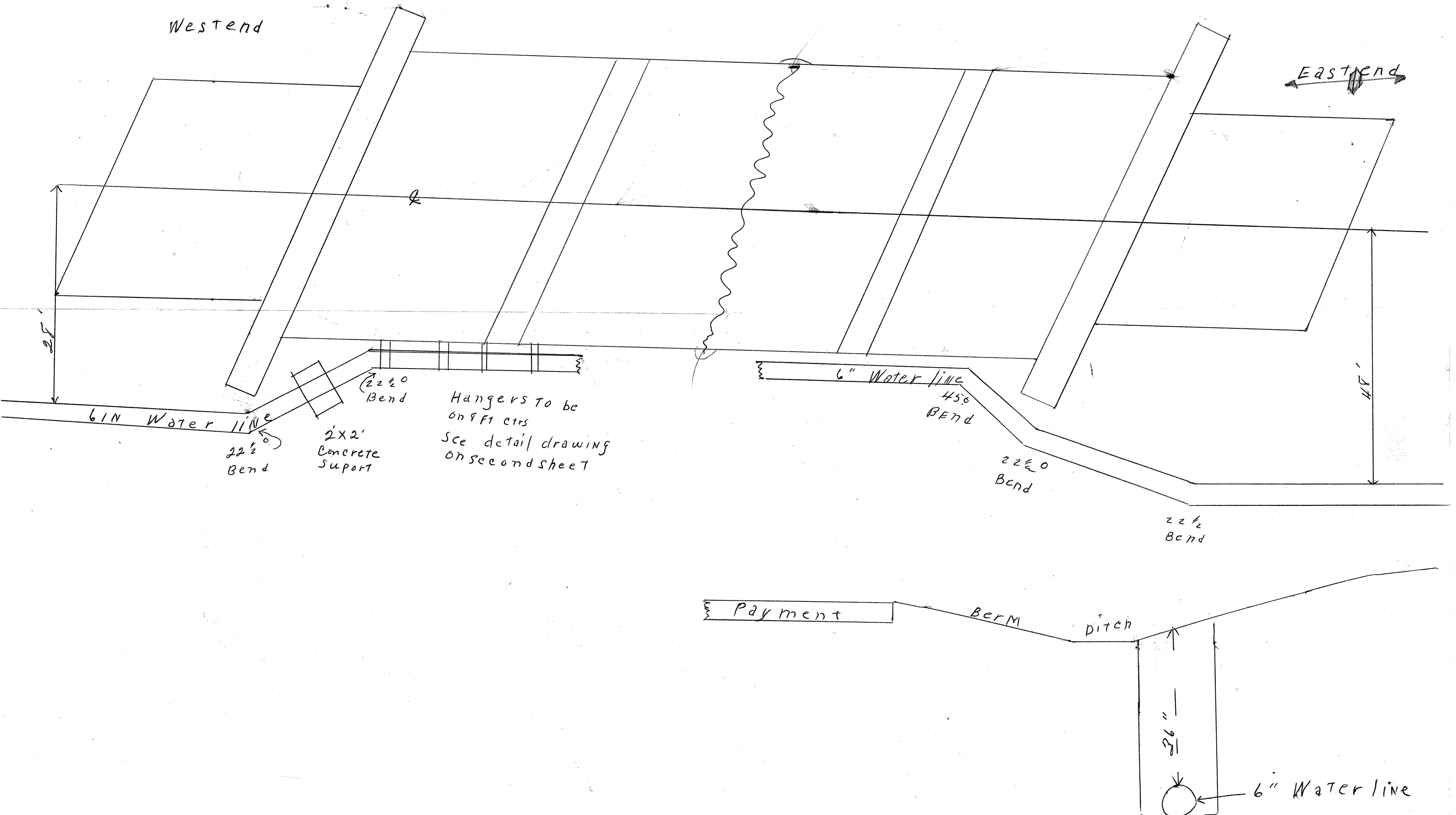


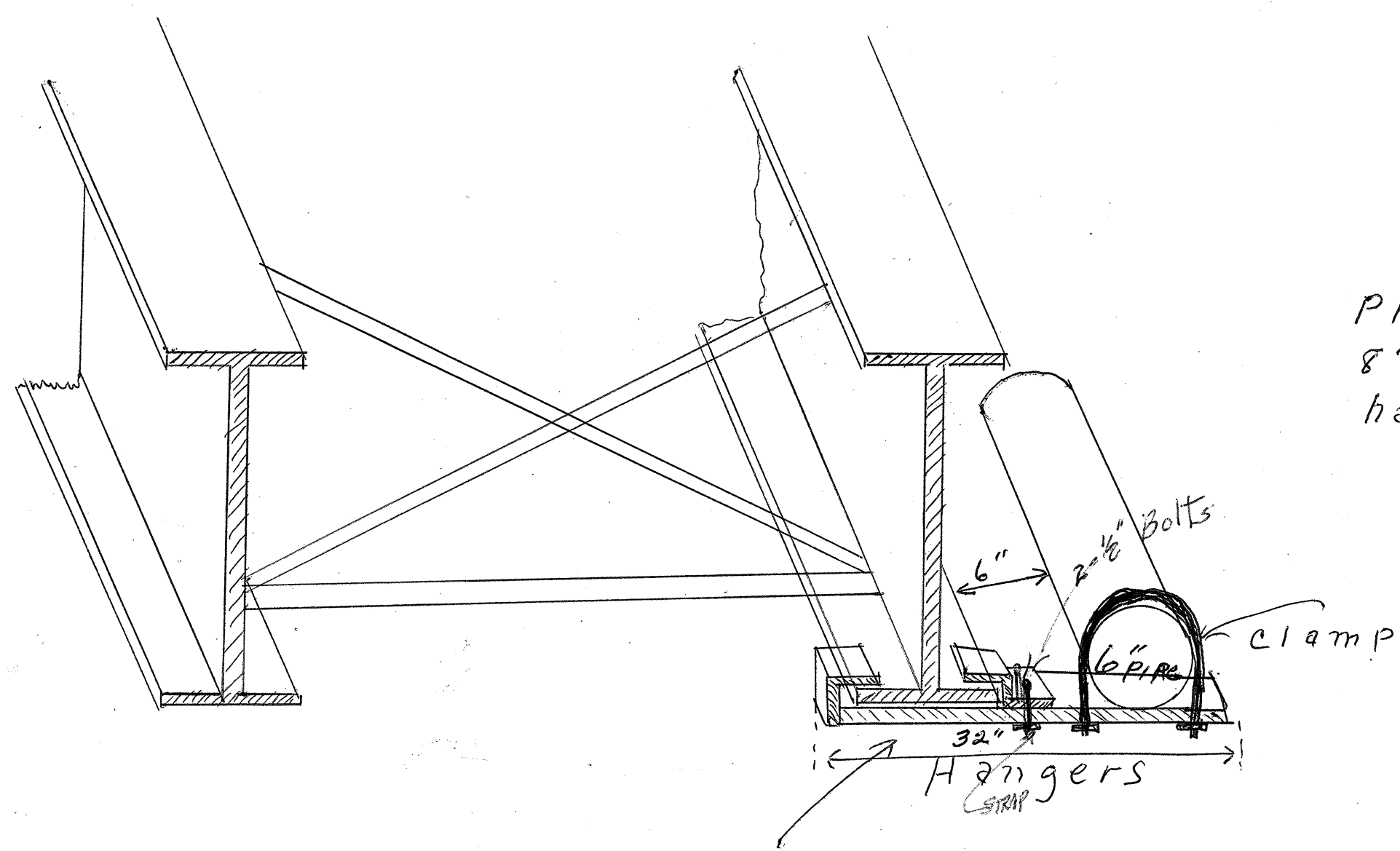
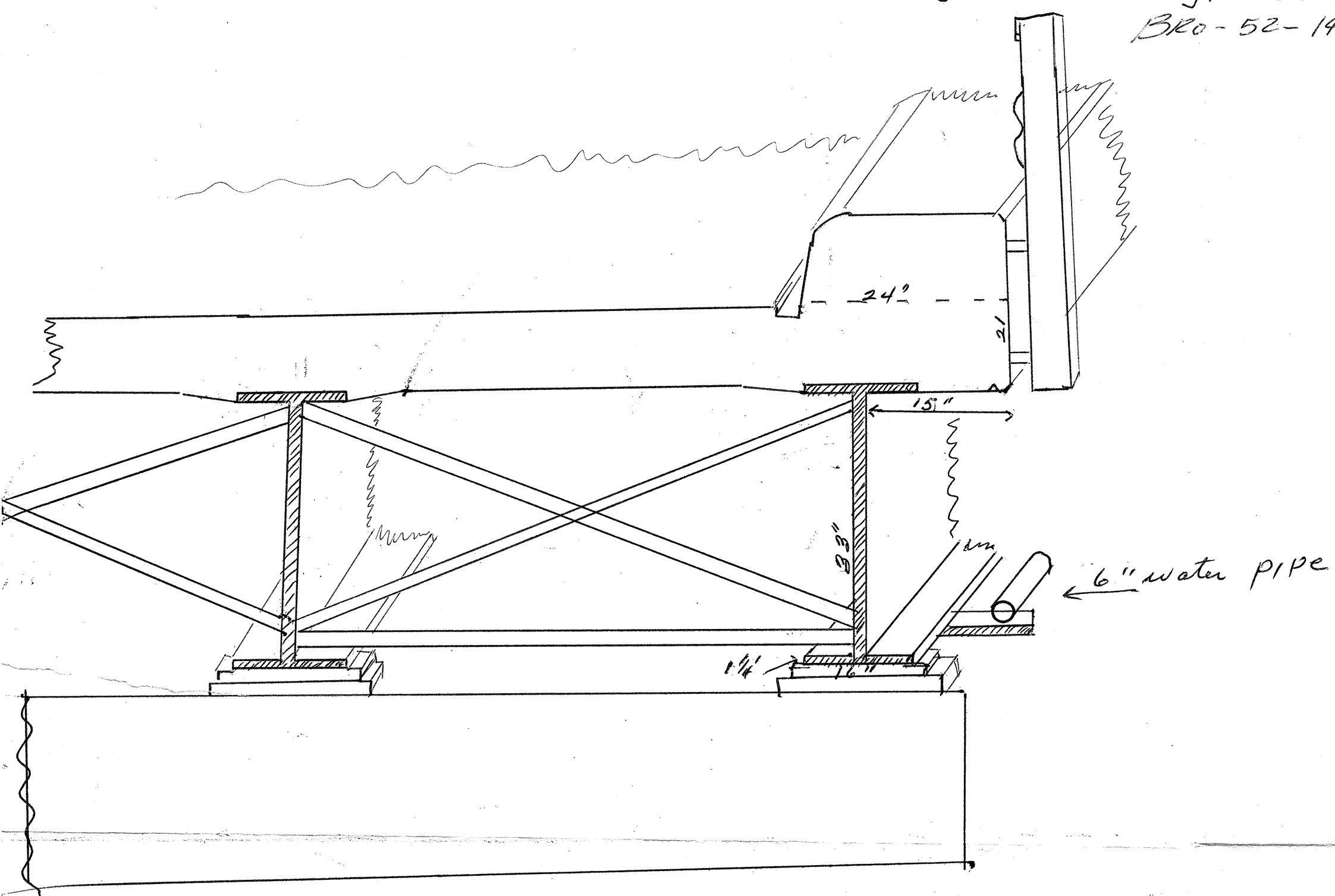
East Bound Lane  
Over Eagle Creek  
BR0-52-1433L

10/2



Bridge over Eagle Creek  
BR0-52-1433R

2 of 2



Pipe hangers to be placed on  
8' ft centers. clamps to be of  $\frac{1}{2}$ " in Rod  
hangers to be of 4" in channel iron

List of hanger to be used on Eagle Creek  
 bridge, N.E. BR-52, near  
 Route U.S. 52  
 Hangers to be on 8 ft 2 in.  
 No Weld, holes or damage  
 to Bridge beam in any way.

Hanger brackets to  
 be of  $\frac{1}{2}$ " x 4" steel

