

STATE OF OHIO
DEPARTMENT OF TRANSPORTATION

BUT-122D-0.59L

CITY OF MIDDLETOWN
BUTLER COUNTY

PROJECT DESCRIPTION

REHABILITATION OF A BRIDGE CARRYING STATE ROUTE 122D OVER UNIVERSITY BLVD. IN THE CITY OF MIDDLETOWN BY REPLACING AND REFURBISHING BEARINGS, ABUTMENT MODIFICATIONS, AND REPLACING THE EXPANSION JOINTS. THE PROJECT WILL ALSO TRIM AND PAINT THE BEAM ENDS. RESURFACING OF THE APPROACH PAVEMENT WILL BE COMPLETED AS PART OF THIS PROJECT.

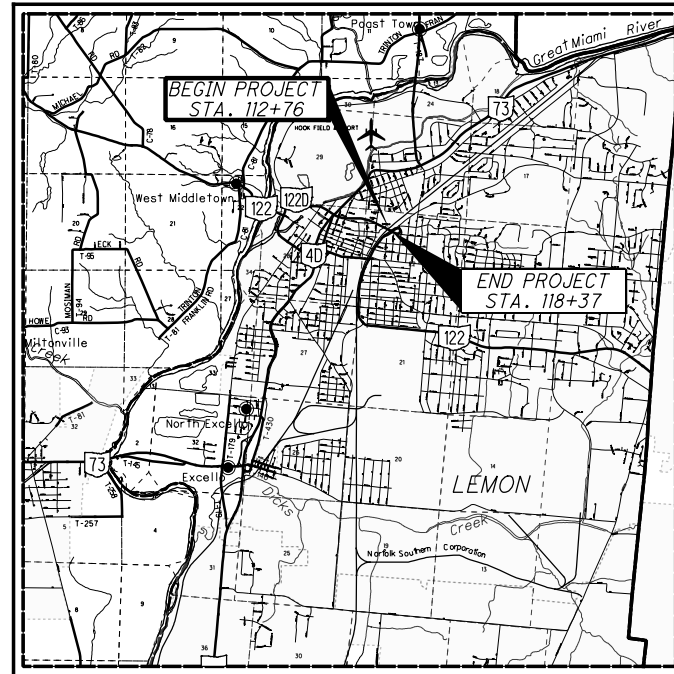
EARTH DISTURBED AREAS

PROJECT EARTH DISTURBED AREA: N/A*
ESTIMATED CONTRACTOR EARTH DISTURBED AREA: N/A*
NOTICE OF INTENT EARTH DISTURBED AREA: N/A*

*MAINTENANCE PROJECT

2019 SPECIFICATIONS

THE STANDARD SPECIFICATIONS OF THE STATE OF OHIO, DEPARTMENT OF TRANSPORTATION, INCLUDING SUPPLEMENTAL SPECIFICATIONS LISTED IN THE PLANS AND CHANGES LISTED IN THE PROPOSAL SHALL GOVERN THIS IMPROVEMENT.



LOCATION MAP

LATITUDE: N39°31'01.42" LONGITUDE: W84°23'16.88"



PORTION TO BE IMPROVED	—————	—————
INTERSTATE HIGHWAY	—————	—————
FEDERAL ROUTES	—————	—————
STATE ROUTES	—————	—————
COUNTY & TOWNSHIP ROADS	—————	—————
OTHER ROADS	—————	—————

DESIGN DESIGNATION

CURRENT ADT (2021)	4,900
DESIGN YEAR ADT (2033)	4,900
DESIGN HOURLY VOLUME (2033)	450
DIRECTIONAL DISTRIBUTION	0.50
TRUCKS (24 HOUR B&C)	0.09
DESIGN SPEED	35 MPH
LEGAL SPEED	35 MPH
DESIGN FUNCTIONAL CLASSIFICATION:	
03 PRINCIPAL ARTERIAL (URBAN)	
NHS PROJECT	NO

DESIGN EXCEPTIONS

NONE REQUIRED

UNDERGROUND UTILITIES
Contact Two Working Days
Before You Dig



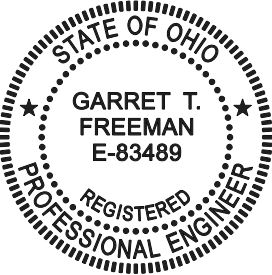
OHIO811.org
Before You Dig

OHIO811, 8-1-1, or 1-800-362-2764
(Non-members must be called directly)

PLAN PREPARED BY:
OHIO DEPARTMENT OF TRANSPORTATION
DISTRICT 8 PRODUCTION - BRIDGE OFFICE
505 SOUTH S.R. 741
LEBANON, OHIO 45036

INDEX OF SHEETS:

TITLE SHEET	1
TYPICAL SECTIONS	2-3
GENERAL NOTES	4
MAINTENANCE OF TRAFFIC NOTES	5
MAINTENANCE OF TRAFFIC PLAN	6-7
GENERAL SUMMARY	8
PAVEMENT CALCULATIONS	9
PAVEMENT MARKING PLAN	10
PLAN & PROFILE	11
CURB RAMP DETAILS	12
STRUCTURES OVER 20 FOOT SPAN	
BUT-122D-0059L	13-30

ENGINEERS SEAL	STANDARD CONSTRUCTION DRAWINGS	SUPPLEMENTAL SPECIFICATIONS
	MT-95.30 4/19/19 EXJ-4-87 1/19/18	800-2020 7/17/20
	MT-95.31 7/19/19 GSD-1-19 1/18/19	821 4/20/12
	MT-95.32 4/19/19 RB-1-55 7/19/13	847 1/20/17
	MT-97.10 4/19/19	921 4/20/12
	MT-98.28 1/17/20	
	MT-98.30 7/19/19	
	MT-105.10 7/19/13	
	MT-110.10 7/19/13 MT-95.40 1/17/20	
	MT-125.00 1/17/20 MT-98.22 1/17/20	
	TC-41.20 10/18/13	
	TC-41.30 10/18/13	
	TC-42.20 10/18/13	
	TC-52.10 10/18/13	
	TC-52.20 7/20/18	

SIGNED: _____
DATE: _____

I HEREBY APPROVE THESE PLANS AND DECLARE THAT THE MAKING OF THIS IMPROVEMENT WILL NOT REQUIRE THE CLOSING TO TRAFFIC OF THE HIGHWAY EXCEPT AS NOTED ON SHEET -, AND THAT PROVISIONS FOR THE MAINTENANCE AND SAFETY OF TRAFFIC WILL BE AS SET FORTH ON THE PLANS AND ESTIMATES

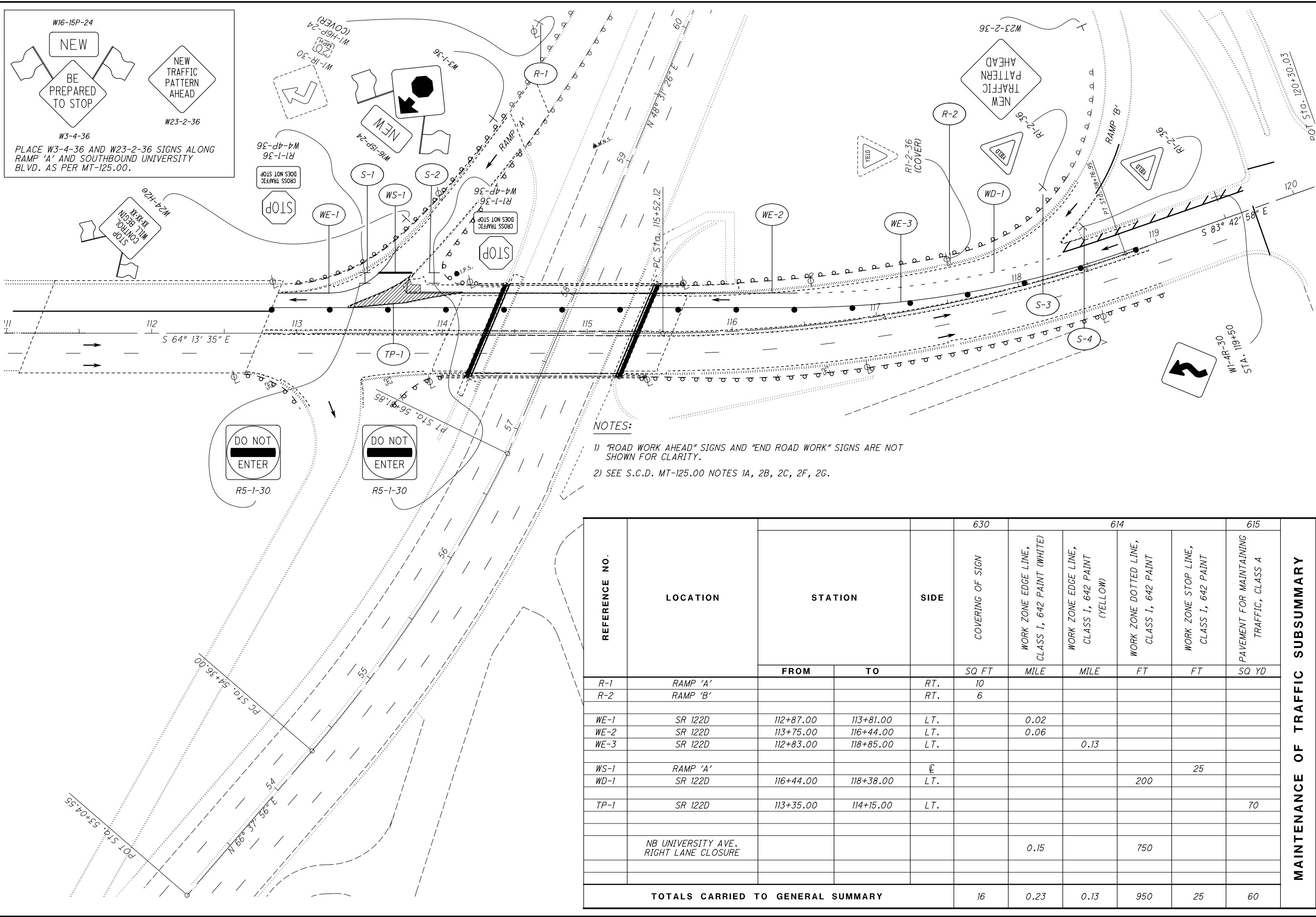
APPROVED _____
DATE _____ DISTRICT DEPUTY DIRECTOR

APPROVED _____
DATE _____ DIRECTOR, DEPARTMENT OF TRANSPORTATION

FEDERAL PROJECT NO.	E161 (447)
CONSTRUCTION PROJECT NO.	100832
RAILROAD INVOLVEMENT	NONE
PID NO.	100832
BUT-122D-0.59L	1 30

I:\ProjectData\BUT-122D-0.59L\Design\Roadway\Sheet\100832_GT001.dgn Sheet 10/9/2020 12:07:12 PM gfreeman

I:\Project+Data\BUT\100832_BUT-122D-0.59\Design\M01\Sheets\00832_MP002.dgn Design 10/9/2020 12:06:03 PM gFreeman



W16-15P-24
NEW
BE PREPARED TO STOP
W3-4-36
PLACE W3-4-36 AND W23-2-36 SIGNS ALONG RAMP 'A' AND SOUTHBOUND UNIVERSITY BLVD. AS PER MT-125.00.
NEW TRAFFIC PATTERN AHEAD
W23-2-36

NOTES:
1) "ROAD WORK AHEAD" SIGNS AND "END ROAD WORK" SIGNS ARE NOT SHOWN FOR CLARITY.
2) SEE S.C.D. MT-125.00 NOTES 1A, 2B, 2C, 2F, 2G.

REFERENCE NO.	LOCATION	STATION		SIDE	COVERING OF SIGN	630		614		615	MAINTENANCE OF TRAFFIC SUBSUMMARY
		FROM	TO			SQ FT	MILE	MILE	FT	FT	
R-1	RAMP 'A'			RT.	10						
R-2	RAMP 'B'			RT.	6						
WE-1	SR 122D	112+87.00	113+81.00	LT.		0.02					
WE-2	SR 122D	113+75.00	116+44.00	LT.		0.06					
WE-3	SR 122D	112+83.00	118+85.00	LT.			0.13				
WS-1	RAMP 'A'			⊙						25	
WD-1	SR 122D	116+44.00	118+38.00	LT.				200			
TP-1	SR 122D	113+35.00	114+15.00	LT.						70	
	NB UNIVERSITY AVE. RIGHT LANE CLOSURE					0.15		750			
TOTALS CARRIED TO GENERAL SUMMARY					16	0.23	0.13	950	25	60	

SHEET NUM.											PART.	ITEM	ITEM	GRAND	UNIT	DESCRIPTION	SEE SHEET NO.	CALCULATED	GTF	CHECKED	GAT																		
7	9	10	11	13							01/S>2/BR	EXT	TOTAL																										
ROADWAY																																							
	258										LUMP	201	11000	LS		CLEARING AND GRUBBING																							
				600							258	202	23500	258	SY	WEARING COURSE REMOVED																							
			70								600	202	30000	600	SF	WALK REMOVED																							
	25										70	202	30600	70	SY	CONCRETE MEDIAN REMOVED																							
				600							25	202	32500	25	FT	CURB AND GUTTER REMOVED																							
	245										600	608	10000	600	SF	4" CONCRETE WALK																							
	25										245	608	52000	245	SF	CURB RAMP																							
			70								25	609	18001	25	FT	COMBINATION CURB AND GUTTER, TYPE 3, AS PER PLAN			12																				
				2							70	609	72000	70	SY	CONCRETE MEDIAN																							
											2	611	99654	2	EACH	MANHOLE ADJUSTED TO GRADE																							
EROSION CONTROL																																							
											1,000	832	30000	1,000	EACH	EROSION CONTROL																							
PAVEMENT																																							
	10										10	253	01001	10	SY	PAVEMENT REPAIR, AS PER PLAN			12																				
	2,541										2,541	254	01000	2,541	SY	PAVEMENT PLANING, ASPHALT CONCRETE (T=1.5')																							
											252	407	20000	252	GAL	NON-TRACKING TACK COAT																							
	121										121	441	10000	121	CY	ASPHALT CONCRETE SURFACE COURSE, TYPE 1, (446), PG64-22																							
TRAFFIC CONTROL																																							
			104								104	630	03100	104	FT	GROUND MOUNTED SUPPORT, NO. 3 POST																							
16			54								54	630	80100	54	SF	SIGN, FLAT SHEET																							
											16	630	83000	16	SF	COVERING OF SIGN																							
			4								4	630	84900	4	EACH	REMOVAL OF GROUND MOUNTED SIGN AND DISPOSAL																							
			4								4	630	86002	4	EACH	REMOVAL OF GROUND MOUNTED POST SUPPORT AND DISPOSAL																							
	0.02										0.02	642	00200	0.02	MILE	LANE LINE, 4", TYPE 1																							
	100										100	642	00400	100	FT	CHANNELIZING LINE, 8", TYPE 1																							
	40										40	642	00700	40	FT	TRANSVERSE/DIAGONAL LINE, TYPE 1																							
	245										245	642	30000	245	FT	REMOVAL OF PAVEMENT MARKING																							
											0.1	644	00200	0.1	MILE	LANE LINE, 4"																							
	710										710	644	00400	710	FT	CHANNELIZING LINE, 8"																							
	40										40	644	00600	40	FT	CROSSWALK LINE																							
	270										270	644	00700	270	FT	TRANSVERSE/DIAGONAL LINE																							
	1,240										1,240	644	30000	1,240	FT	REMOVAL OF PAVEMENT MARKING																							
STRUCTURE REPAIR (BUT-122D-0.59)																																							
MAINTENANCE OF TRAFFIC																																							
0.36											0.36	614	22100	0.36	MILE	WORK ZONE EDGE LINE, CLASS I, 4", 642 PAINT																							
950											950	614	24200	950	FT	WORK ZONE DOTTED LINE, CLASS I, 4", 642 PAINT																							
25											25	614	26200	25	FT	WORK ZONE STOP LINE, CLASS I, 642 PAINT																							
2											2	614	12384	2	EACH	WORK ZONE IMPACT ATTENUATOR, 24" WIDE HAZARDS, (BIDIRECTIONAL)																							
340											340	622	41100	340	FT	PORTABLE BARRIER, UNANCHORED																							
70											70	615	20000	70	SY	PAVEMENT FOR MAINTAINING TRAFFIC, CLASS A																							
INCIDENTALS																																							
LUMP											LUMP	614	11000	LS		MAINTAINING TRAFFIC																							
LUMP											LUMP	623	10000	LS		CONSTRUCTION LAYOUT STAKES AND SURVEYING																							
LUMP											LUMP	624	10000	LS		MOBILIZATION																							

GENERAL SUMMARY

BUT - 122D - 0.59L

I:\Project+Data\BUT\100832_BUT-122D-0.59\Design\Roadway\Sheets\100832_G001.dgn Sheet 10/9/2020 12:18:19 PM gfreeman

ESTIMATED QUANTITIES - STRUCTURE No.: BUT-122D-0059L									
ITEM	EXTENSION	TOTAL	UNIT	DESCRIPTION	ABUT.	PIERS	SUPER.	GEN.	SHEET #
202	11201	LS	LS	PORTIONS OF STRUCTURE REMOVED, AS PER PLAN				LUMP	14
509	10001	5178	LB	EPOXY COATED REINFORCING STEEL, AS PER PLAN	5078		100		15
510	10001	332	EA	DOWEL HOLES WITH NONSHRINK, NONMETALLIC GROUT, AS PER PLAN					
511	53014	11	CY	CLASS QC3 CONCRETE, MISC.: SUPERSTRUCTURE CONCRETE WITH QC/QA, AS PER PLAN			11		15
511	53014	29	CY	CLASS QC3 CONCRETE, MISC.: SUBSTRUCTURE CONCRETE WITH QC/QA, AS PER PLAN			29		15
512	10400	750	SY	TREATING OF CONCRETE BRIDGE DECK WITH SRS			750		
513	10201	5400	LB	STRUCTURAL STEEL MEMBERS, LEVEL UF, AS PER PLAN			5,400		15
513	21000	8	EACH	TRIMMING OF BEAM END			5		
514	00051	1825	SF	SURFACE PREPARATION OF EXISTING STRUCTURAL STEEL, AS PER PLAN			1825		14
514	27700	1825	SF	FIELD PAINTING, MISC.: FIELD PAINTING OF EXISTING STRUCTURAL STEEL (TWO COAT)			1825		14
514	00504	8	MNHR	GRINDING FINS, TEARS, SLIVERS ON EXISTING STRUCTURAL STEEL			8		14
516	11210	131.45	FT	STRUCTURAL EXPANSION JOINT INCLUDING ELASTOMERIC STRIP SEAL			131.45		
516	13200	36	SF	1/2" PREFORMED EXPANSION JOINT FILLER	36				
516	13600	4	SF	1" PREFORMED EXPANSION JOINT FILLER	4				
516	43100	8	EACH	ELASTOMERIC BEARING WITH INTERNAL LAMINATES ONLY (NEOPRENE) (T=2.50")	8				
516	45305	8	EACH	REFURBISH BEARING DEVICE, AS PER PLAN	8				15
516	47001	LS	LS	JACKING AND TEMPORARY SUPPORT OF SUPERSTRUCTURE, AS PER PLAN				LUMP	15
519	11101	84	SF	PATCHING CONCRETE STRUCTURE, AS PER PLAN	84				15
847	10000	15	SY	MICRO SILICA MODIFIED CONCRETE OVERLAY (T=2.5")			15		
847	20000	6	CY	MICRO SILICA MODIFIED CONCRETE OVERLAY (VARIABLE THICKNESS), MATERIAL ONLY			6		
847	30000	LS	LS	TEST SLAB				LUMP	
847	30300	15	SY	WEARING COURSE REMOVED, ASPHALT			15		
847	30400	15	SY	EXISTING CONCRETE OVERLAY REMOVED (D=0.5")			15		
847	50000	15	SY	HAND CHIPPING			15		

BUT - 122D - 0.59L
 PID No. 100832

ESTIMATED STRUCTURE QUANTITIES
 BRIDGE No.: BUT-122D-0059L
 SR 122D OVER UNIVERSITY BLVD.

DESIGNED
 GTF
 CHECKED
 CAH

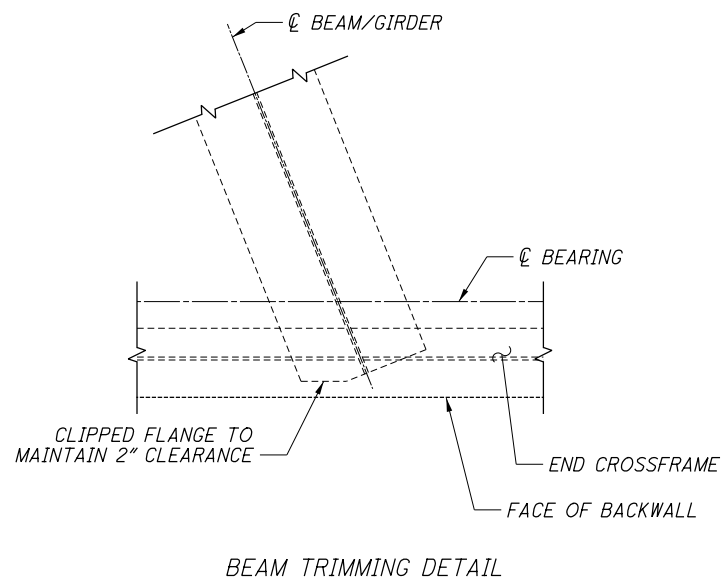
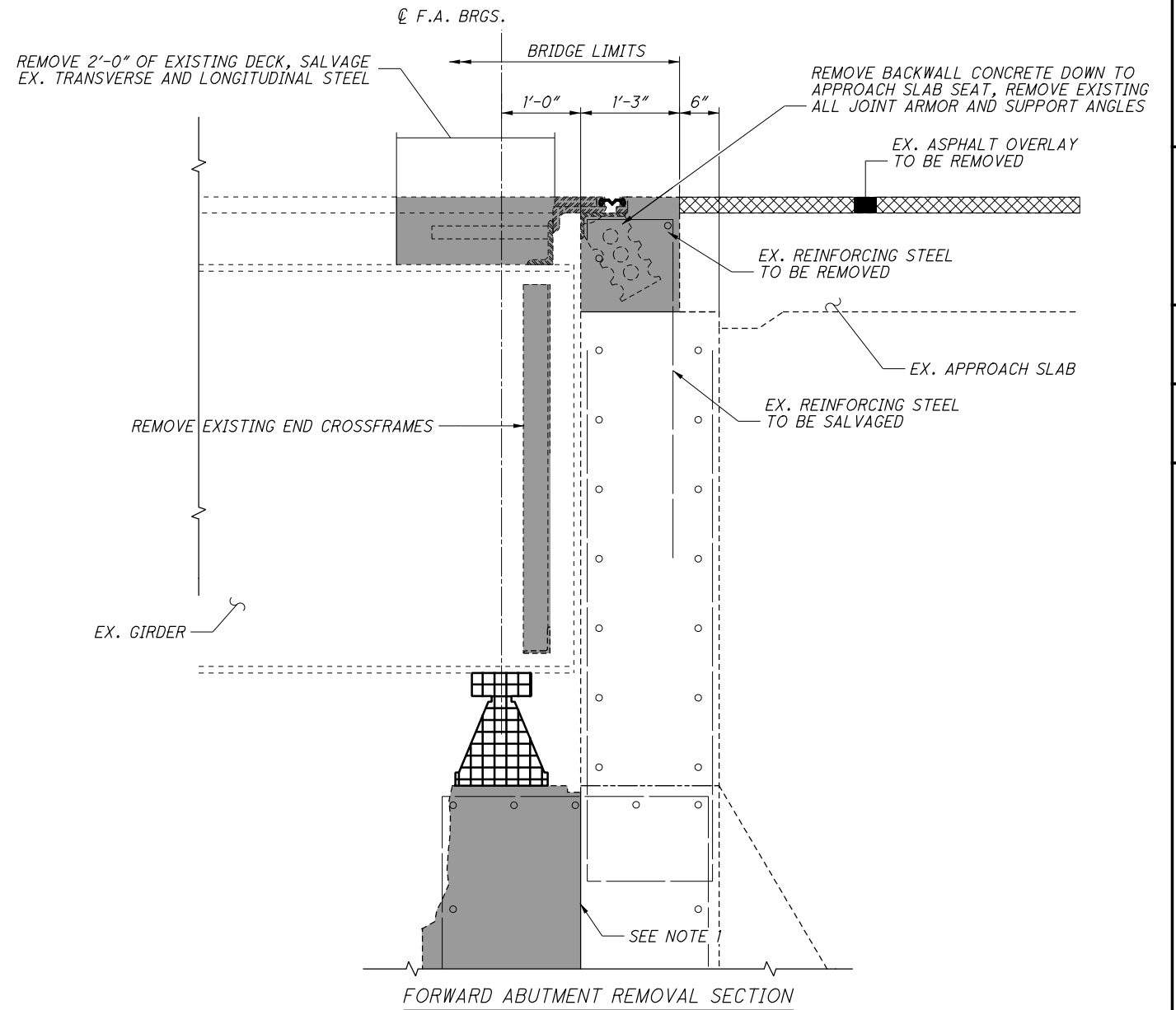
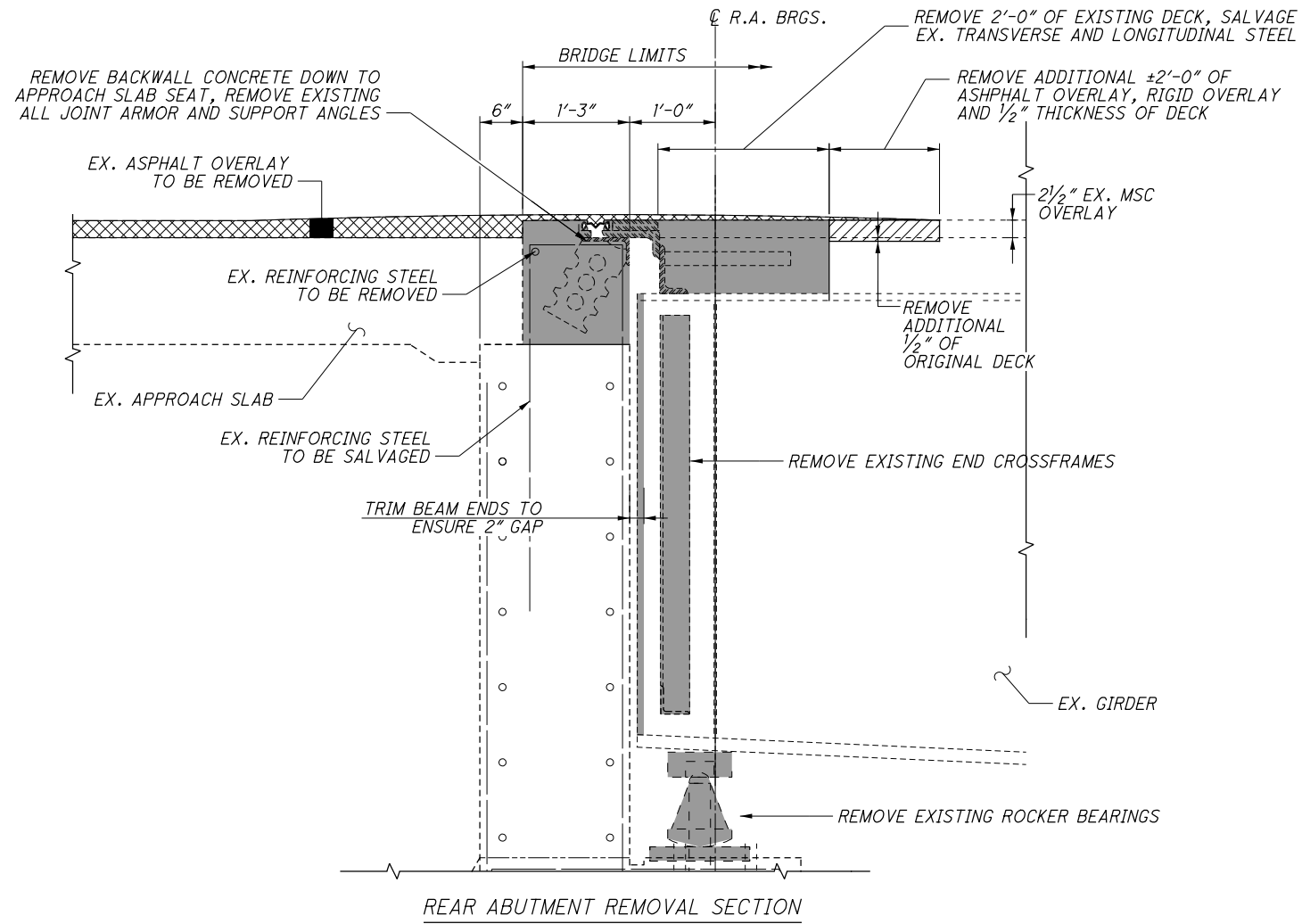
DRAWN
 GTF
 REVISED

REVIEWED
 CAH
 STRUCTURE FILE NUMBER
 0902365

DATE
 MM/DD/YY

DESIGN AGENCY
 OHIO DEPT OF TRANSPORTATION
 DISTRICT 8 - BRIDGE OFFICE
 LEBANON, OH 45036

I:\Project+Data\BUT-122D-0.59\Design\Structures\BUT122_0059C_Sheets\122_0059C_SV003.dgn Sheet 10/9/2020 12:23:46 PM gfreeman



LEGEND

- ITEM 202 - PORTIONS OF STRUCTURE REMOVED, OVER 20' SPAN
- ITEM 202 - WEARING COURSE REMOVED
- ITEM 516 - REFURBISHING BEARING DEVICES, AS PER PLAN
- ITEM 847 - EXISTING CONCRETE OVERLAY REMOVED

NOTES

- 1) CONTRACTOR SHALL TAKE CARE NOT TO DAMAGE REINFORCING STEEL EXTENDING FROM COUNTERFORTS INTO ABUTMENT SEAT.

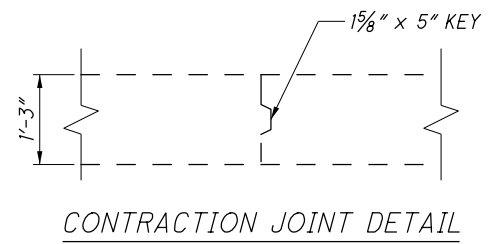
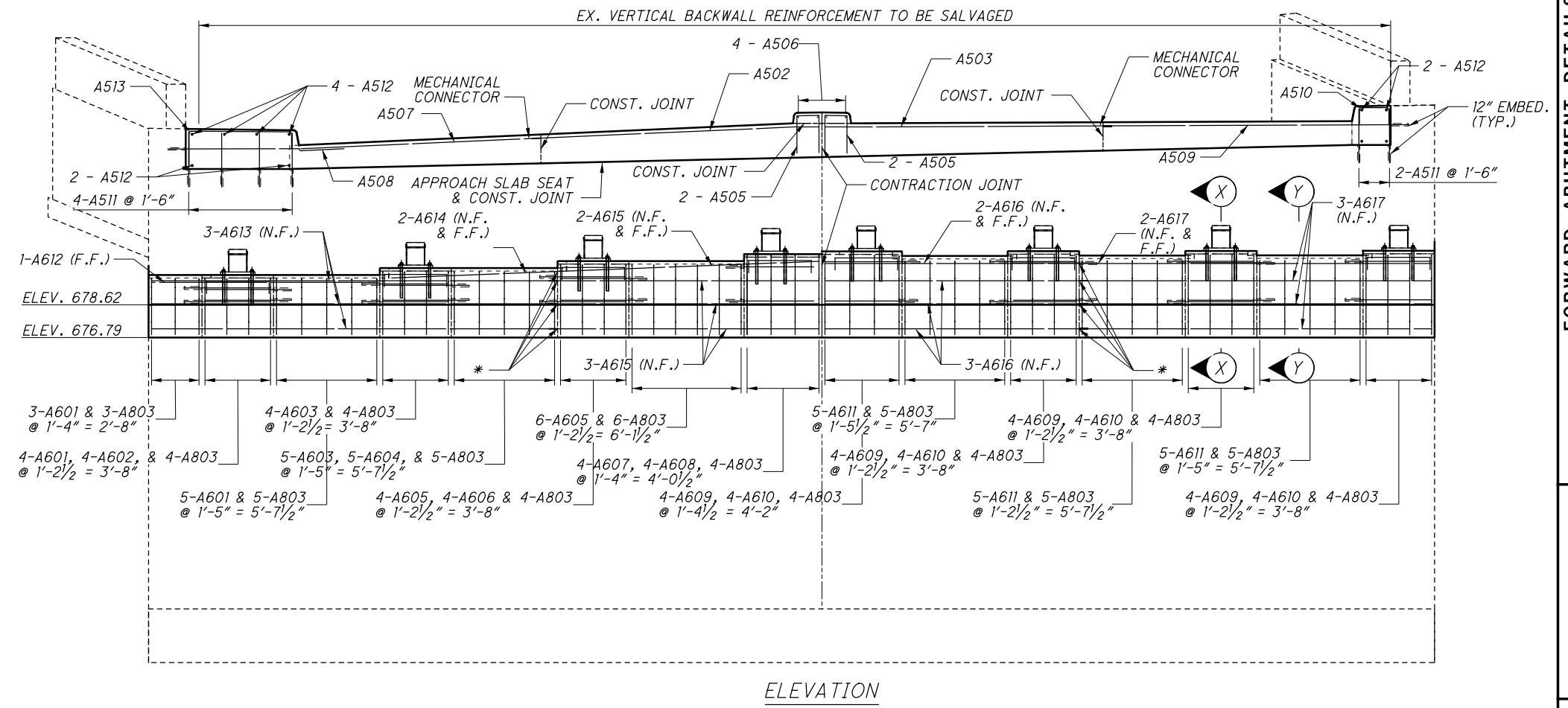
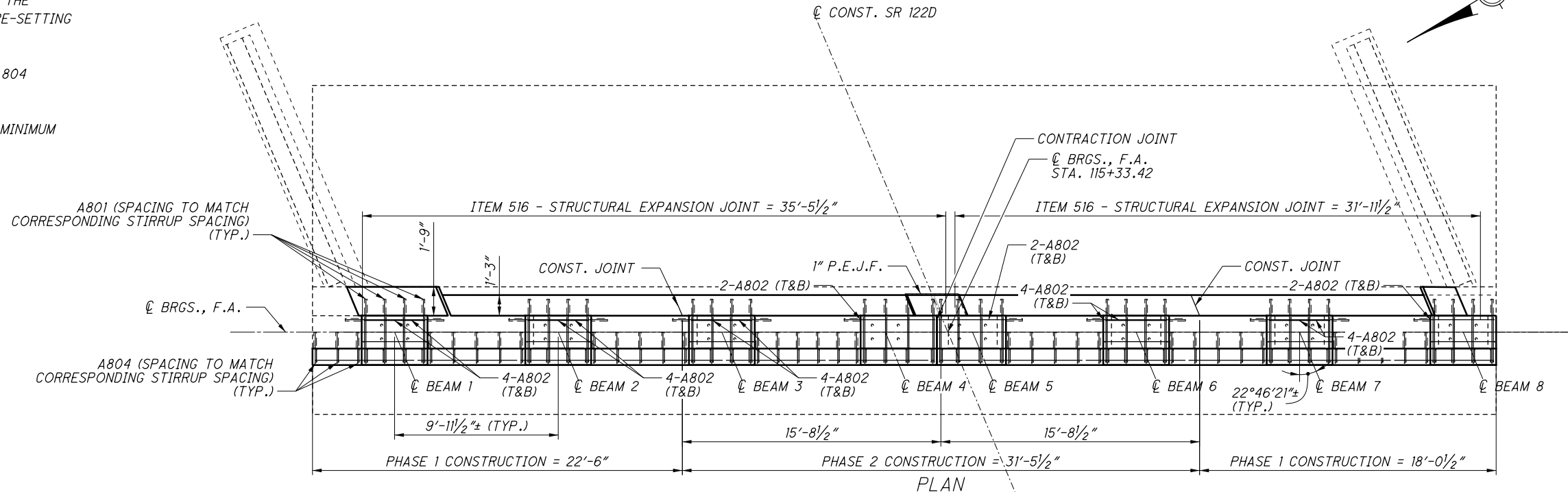
STRUCTURE REMOVAL DETAILS	BRIDGE No.: BUT-122D-0059L SR 122D OVER UNIVERSITY BLVD.	DESIGN AGENCY OHIO DEPT OF TRANSPORTATION DISTRICT 8 - BRIDGE OFFICE LEBANON, OH 45036	DATE MM/DD/YY CAH	REVIEWED MM/DD/YY CAH
DESIGNED GTF	DRAWN GTF	STRUCTURE FILE NUMBER 0902365	CHECKED CAH	REVISED XXX
BUT-122D-0.59L	PID No. 100832			
8 / 18				
20 30				

NOTES:

- 1) ACCURATELY PLACE REINFORCING STEEL IN THE VICINITY OF THE BRIDGE SEAT TO AVOID INTERFERENCE WITH THE DRILLING OF BEARING ANCHOR HOLES OR THE PRE-SETTING OF BEARING ANCHORS.
- 2) PROVIDE 44" LAP SPLICES FOR A802, A803, & A804 REINFORCING BARS.
- 3) ALL DOWLED REINFORCING STEEL SHALL HAVE A MINIMUM EMBEDMENT LENGTH OF 12".
- 3) FOR SECTIONS X-X AND Y-Y SEE SHEET 23.

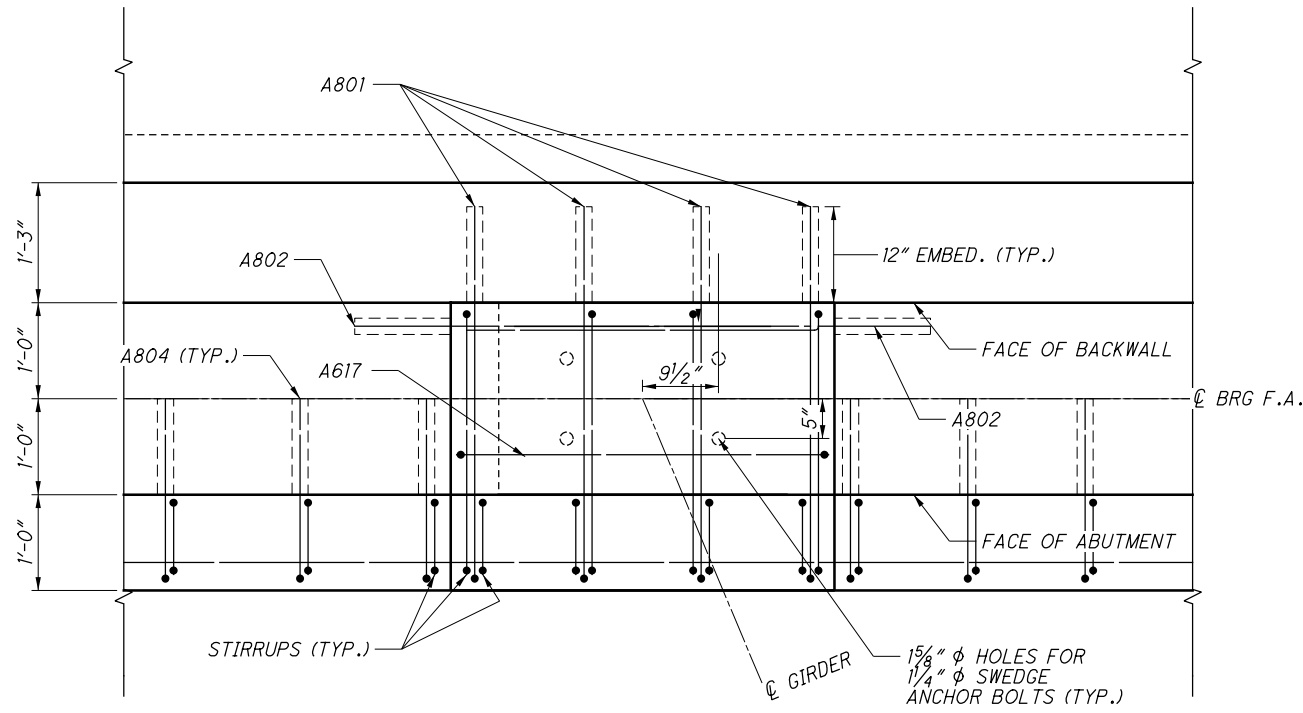
* = MECHANICAL CONNECTOR

FORWARD BEARING SEAT ELEVATIONS	
BEAM No.	ELEVATION
1	680.30
2	680.72
3	681.13
4	681.51
5	681.67
6	681.70
7	681.68
8	681.63

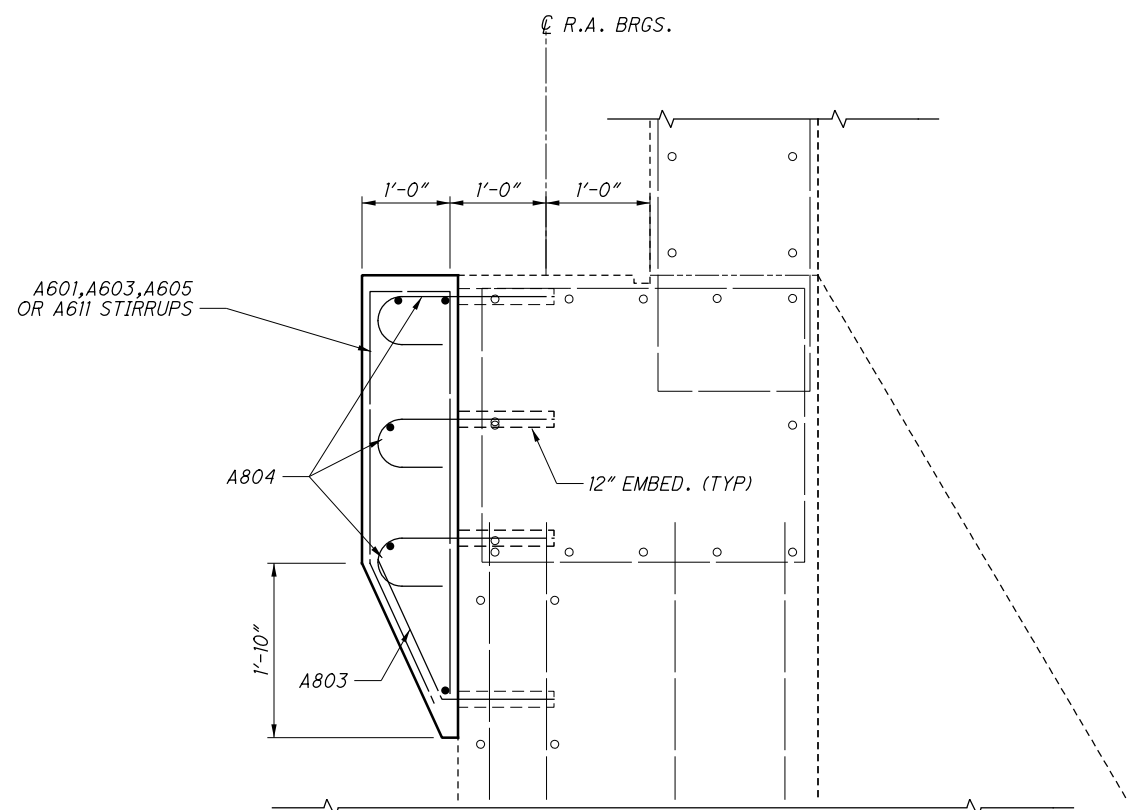


I:\ProjectData\BUT\100832_BUT-122D-0.59L\Design\Structures\BUT122-0059C_Sheets\122_0059C_SF001.dgn Sheet 10/9/2020 12:37:54 PM gfreeman

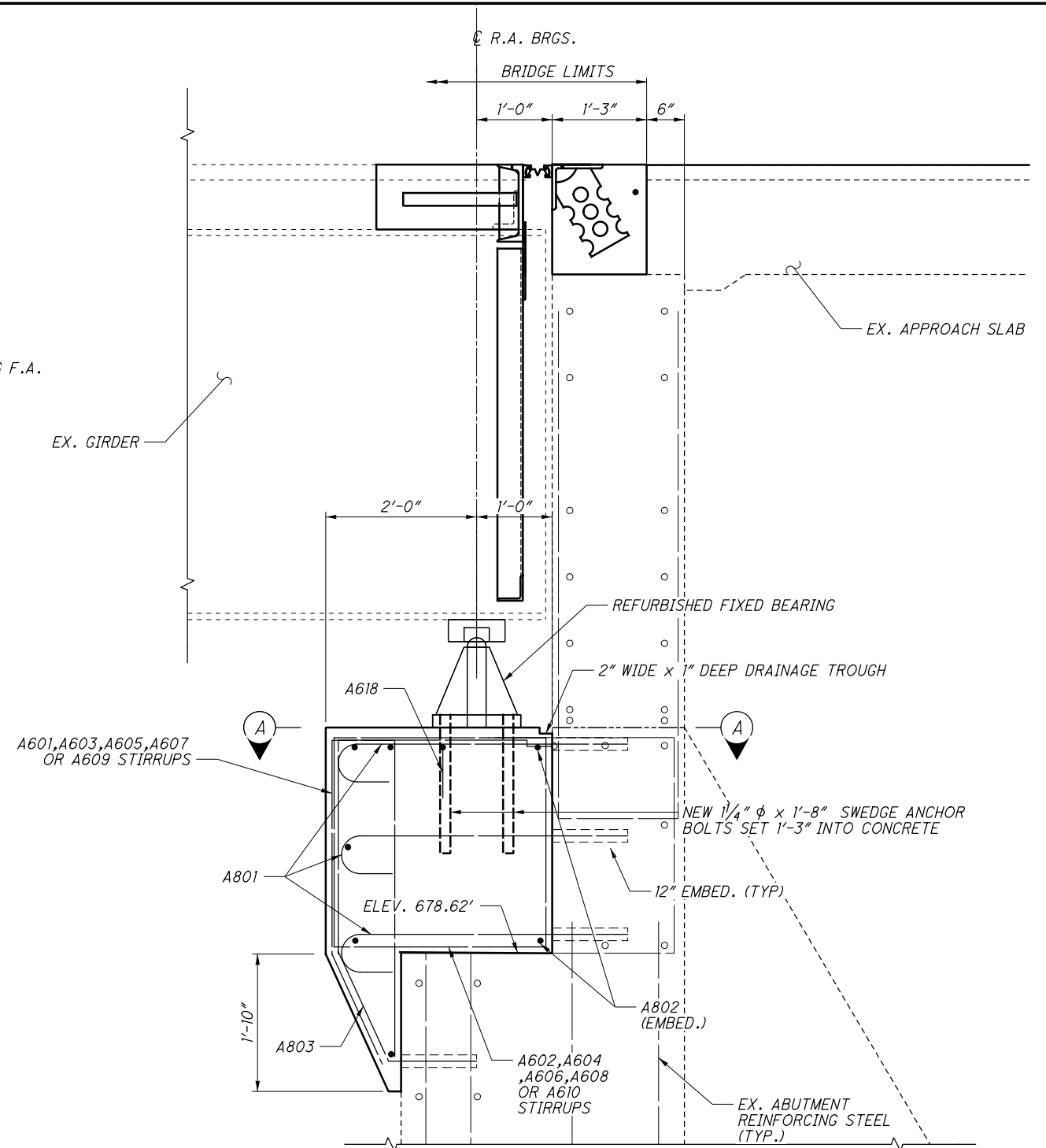
I:\Project+Data\BUT-122D-0.59\Design\Structures\BUT122_0059C_Sheets\122_0059C_SF002.dgn Sheet 10/9/2020 12:43:26 PM gfreeman



FORWARD ABUTMENT CONSTRUCTION VIEW A-A

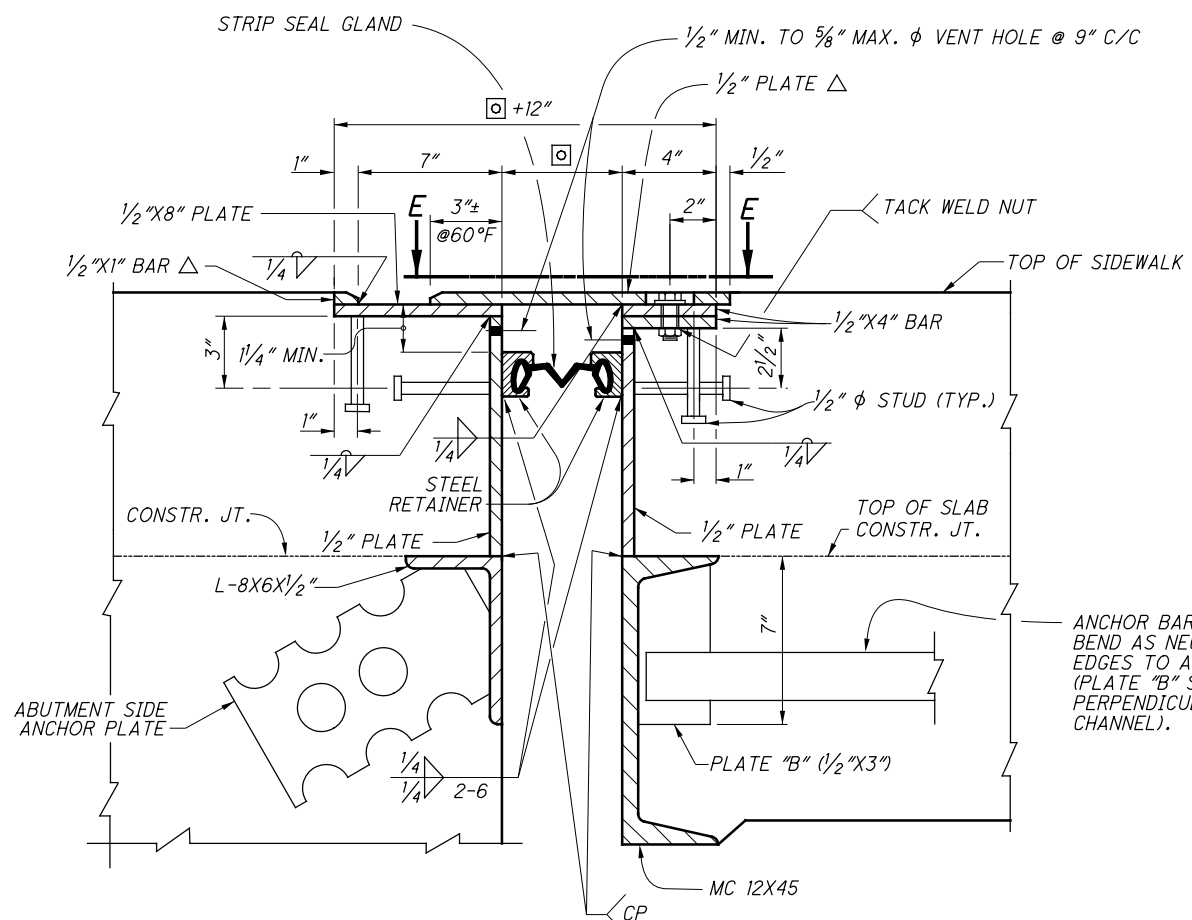


FORWARD ABUTMENT CONSTRUCTION SECTION Y-Y



FORWARD ABUTMENT CONSTRUCTION SECTION X-X

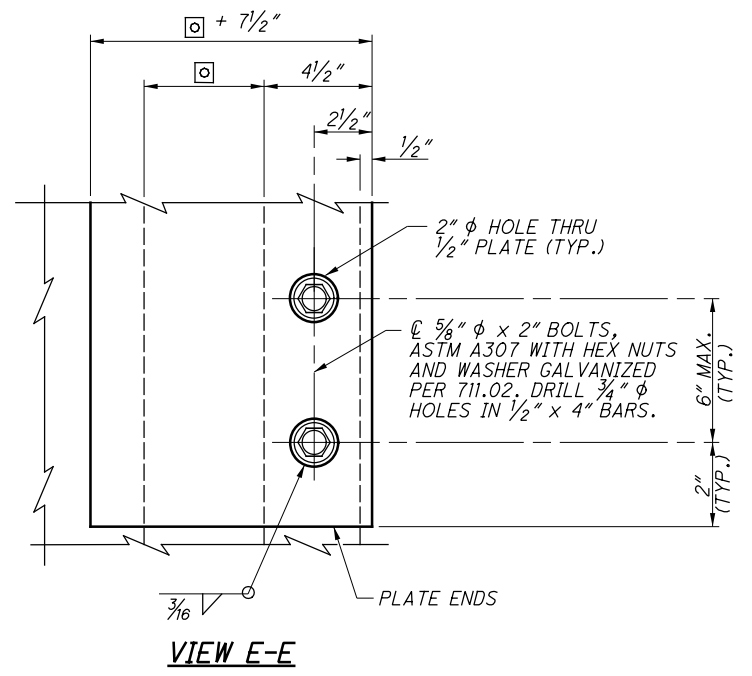
DESIGNED		DRAWN	REVIEWED	DATE	DESIGN AGENCY
GTF		GTF	CAH	MM/DD/YY	OHIO DEPT OF TRANSPORTATION
CHECKED		REVIS	CAH	STRUCTURE FILE NUMBER	DISTRICT 8 - BRIDGE OFFICE
CAH		XXX	0902365		LEBANON, OH 45036
FORWARD ABUTMENT DETAILS					
BRIDGE No.: BUT-122D-0059L					
SR 122D OVER UNIVERSITY BLVD.					
BUT-122D-0.59L					
PID No. 100832					
11 / 18					
23 / 30					



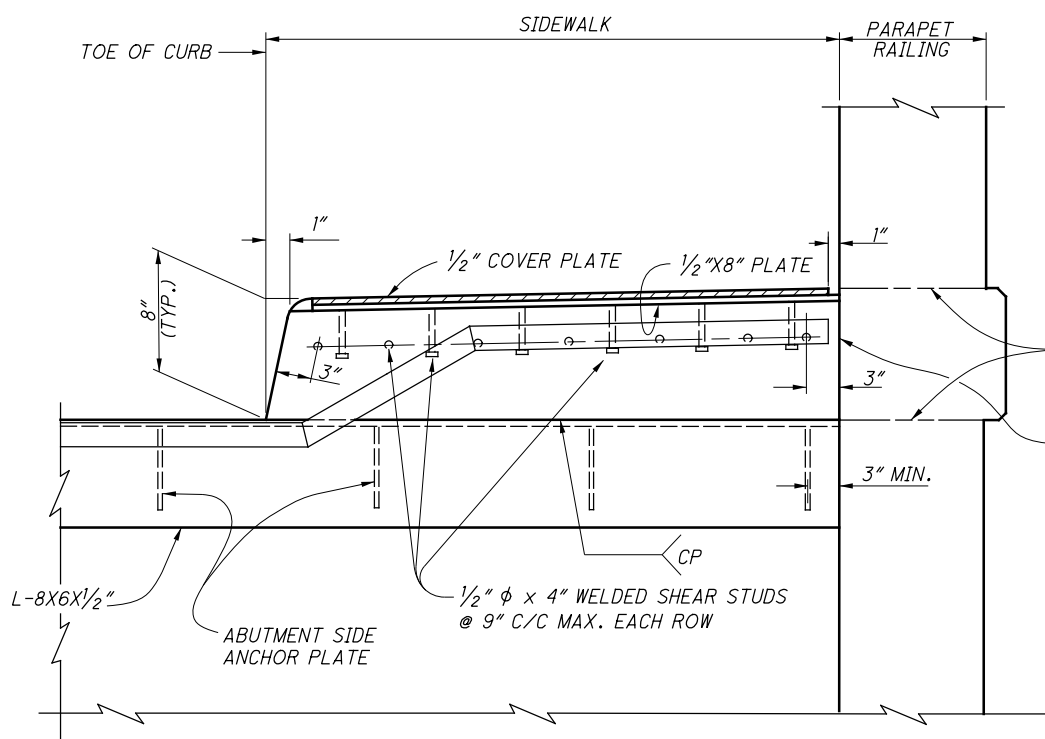
☐ - THIS DIMENSION IS THE SUM OF
(2 X STEEL RETAINER WIDTH + DIM. "A").

SECTION Y-Y

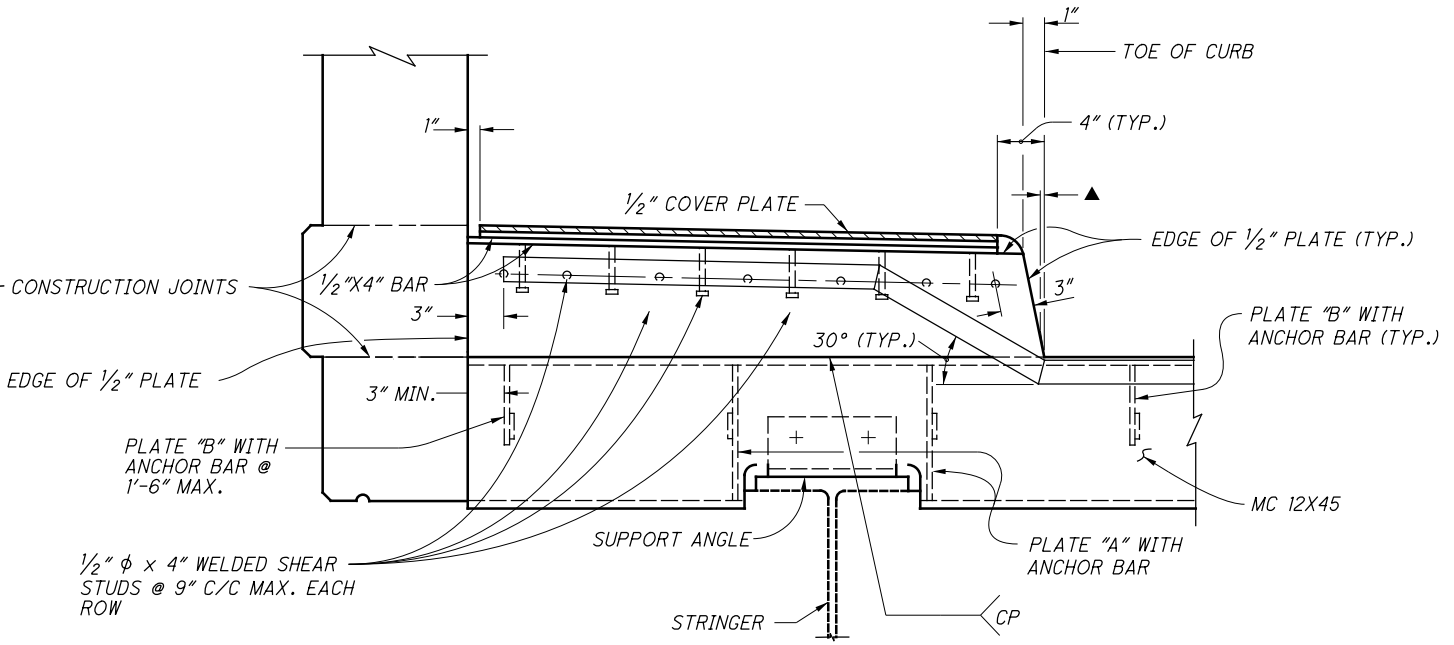
△ - PROVIDE A 1/2" HORIZONTAL x 1/4" VERTICAL BEVEL
AT THE EXPOSED EDGE OF THE 1/2" COVER PLATE
AND 1/2" x 1" BAR



VIEW E-E



SECTION F-F



SECTION G-G

▲ - 0" MIN. TO 1/2" MAX. AT BREAKPOINT IN RETAINER
DIMENSION WILL ONLY APPLY TO THE SIDE OF JOINT
ASSEMBLY WHICH IS NEAREST TO THE CURB LINE
(SEE DETAIL "D" ABOVE).

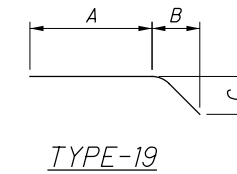
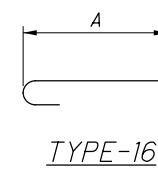
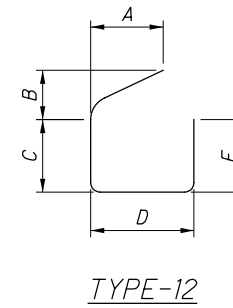
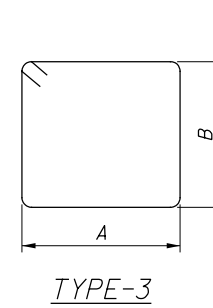
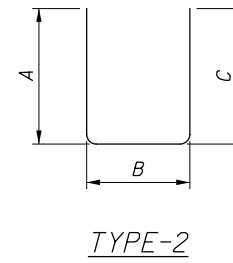
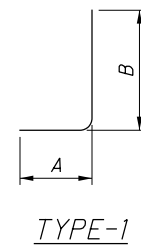
I:\ProjectData\BUT-122D-0.59\Design\Structures\BUT122-0059C-Sheets\122-0059C-SX002.dgn Sheet 10/9/2020 12:46:11 PM gfreeman

DESIGN AGENCY		OHIO DEPT OF TRANSPORTATION DISTRICT 8 - BRIDGE OFFICE LEBANON, OH 45036	
DATE	MM/DD/YY	REVIEWED	CAH
FILE NUMBER	0902365	STRUCTURE FILE NUMBER	0902365
DRAWN	GTF	CHECKED	CAH
DESIGNED	GTF	REVISOR	XXX
EXPANSION JOINT DETAILS			
BRIDGE No.: BUT-122D-0059L			
SR 122 OVER UNIVERSITY BLVD.			
BUT-122D-0.59L		PID No. 100832	
15 / 18		27 / 30	

I:\Project+Data\BUT-122D-0.59\Design\Structures\BUT122-0059C\Sheets\122-0059C-SL001.dgn Sheet 10/9/2020 12:50:44 PM gfreeman

MARK	NUMBER		LENGTH	WEIGHT	TYPE	DIMENSIONS					
	TOTAL					A	B	C	D	E	R
SUBSTRUCTURE REINFORCING STEEL											
# A501	1		17'-1"	18	STR						
A502	2		16'-0"	34	STR						
A503	1		15'-2"	16	STR						
# A504	1		18'-5"	19	STR						
A505	8		5'-2"	44	STR	2'-1 1/4"	1'-2 3/4"	2'-1 1/4"			
A506	8		1'-0"	8	STR						
# A507	1		13'-0"	14	STR						
A508	4		9'-11"	40	STR						
# A509	1		17'-6"	18	STR						
A510	6		2'-11"	18	STR	0'-10 3/4"	1'-5"	0'-10 3/4"			
A511	36		3'-0"	113	STR						
A512	20		1'-6"	32	STR						
A513	6		6'-7"	41	STR	0'-10 3/4"	5'-0 3/4"	0'-10 3/4"			
A601	12		6'-10"	123	STR	0'-8"	1'-5 1/2"	1'-8 3/4"	0'-8"	3'-2"	
A602	4		8'-9"	53	STR	2'-7 1/2"	1'-4"				
A603	9		7'-7"	103	STR	0'-8"	1'-5 1/2"	2'-1 1/4"	0'-8"	3'-6 3/4"	
A604	4		9'-7"	58	STR	2'-7 1/2"	1'-8 3/4"				
A605	10		8'-5"	126	STR	0'-8"	1'-5 1/2"	2'-6"	0'-8"	3'-11 1/2"	
A606	4		10'-4"	62	STR	2'-7 1/2"	2'-1 1/2"				
A607	4		9'-2"	55	STR	0'-8"	1'-5 1/2"	2'-10 3/4"	0'-8"	4'-4"	
A608	4		11'-2"	67	STR	2'-7 1/2"	2'-6"				
A609	16		9'-6"	228	STR	0'-8"	1'-5 1/2"	3'-0 3/4"	0'-8"	4'-6"	
A610	16		11'-5"	274	STR	2'-7 1/2"	2'-8"				
A611	16		9'-0"	216	STR	0'-8"	1'-5 1/2"	2'-9 1/2"	0'-8"	4'-3"	
A612	1		12'-7"	19	STR						
#A613	3		22'-9"	102	STR						
#A614	2		9'-9"	29	STR						
#A615	5		14'-8"	110	STR						
#A616	5		14'-3"	107	STR						
#A617	5		19'-9"	148	STR						
A618	8		4'-8"	56	STR	0'-8"	3'-8"	0'-8"			
A801	96		4'-8"	1196	STR	3'-10"					
A802	26		4'-10"	335	STR						
A803	66		2'-8"	470	STR	1'-7 1/4"	0'-5 3/4"	1'-0 3/4"			
A804	102		2'-8"	726	STR	1'-10"					
SUB-TOTAL			5,078								

MARK	NUMBER		LENGTH	WEIGHT	TYPE	DIMENSIONS					
	TOTAL					A	B	C	D	E	R
SUPERSTRUCTURE REINFORCING STEEL											
S501	24		1'-8"	42	STR						
S502	12		4'-7"	58	STR	1'-1"	0'-10 3/4"	0'-9 1/4"	0'-1 3/4"		
SUB-TOTAL			100								



NOTE:

BAR MARKS WITH A (#) INDICATE THE USE OF MECHANICAL CONNECTORS. MECHANICAL CONNECTORS ARE INCLUDED IN THE TOTAL LENGTH OF THE REINFORCING BAR.

MECHANICAL CONNECTORS

MECHANICAL CONNECTORS SHALL BE CAPABLE OF DEVELOPING 125 PERCENT OF THE YIELD STRENGTH OF THE CONNECTED BARS. FOR CONNECTORS WITH THREADED BAR ENDS, IN ORDER TO OFFSET THE EFFECT OF AREA REDUCTION ON THE STRENGTH OF THE BAR AND STILL MEET THE REQUIREMENTS OF ASTM A615, USE THE NEXT LARGER DIAMETER BAR OR A HIGHER GRADE OF STEEL BAR FOR THE REINFORCING RECEIVING THE THREADS.

DESIGN AGENCY
OHIO DEPT OF TRANSPORTATION
DISTRICT 8 - BRIDGE OFFICE
LEBANON, OH 45036

DATE
MM/DD/YY
REVIEWED
CAH
STRUCTURE FILE NUMBER
0902365

DRAWN
GTF
CHECKED
CAH
REVISION
XXX

SUPERSTRUCTURE DETAILS
BRIDGE No.: BUT-122D-0059L
SR 122 OVER UNIVERSITY BLVD.

BUT - 122D - 0.59L
PID No. 100832