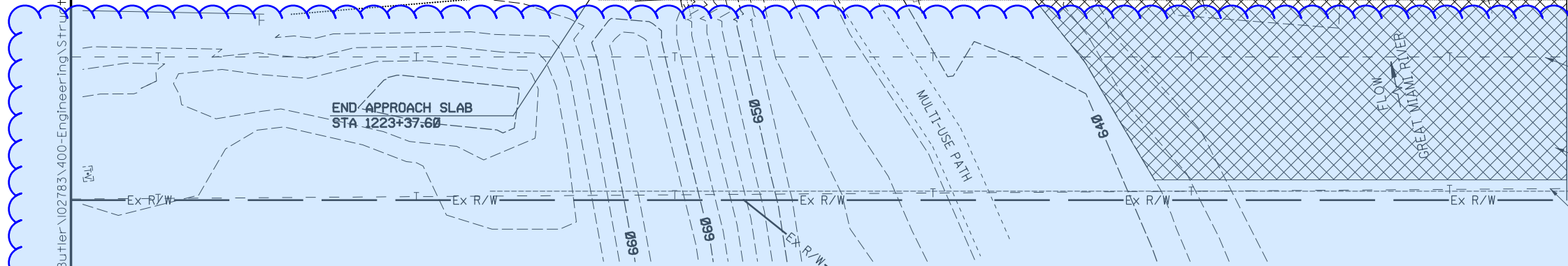
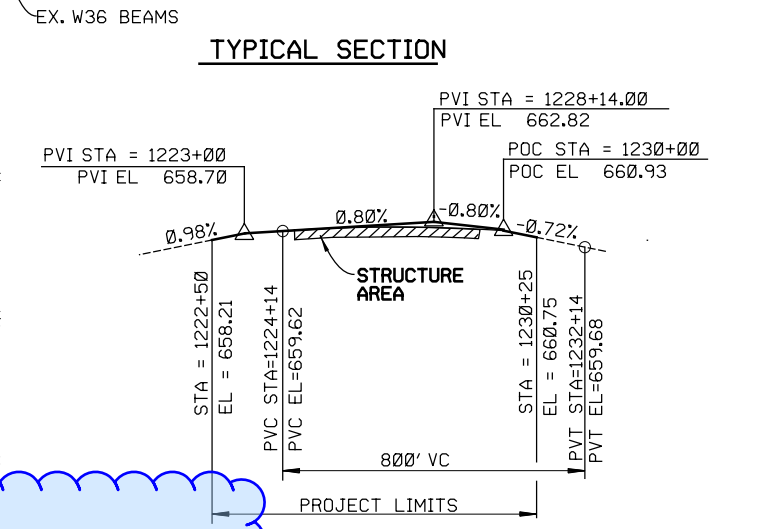
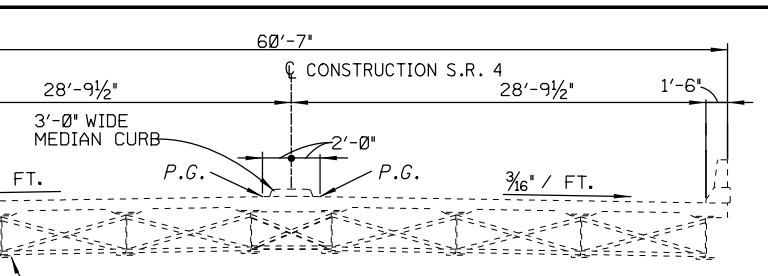
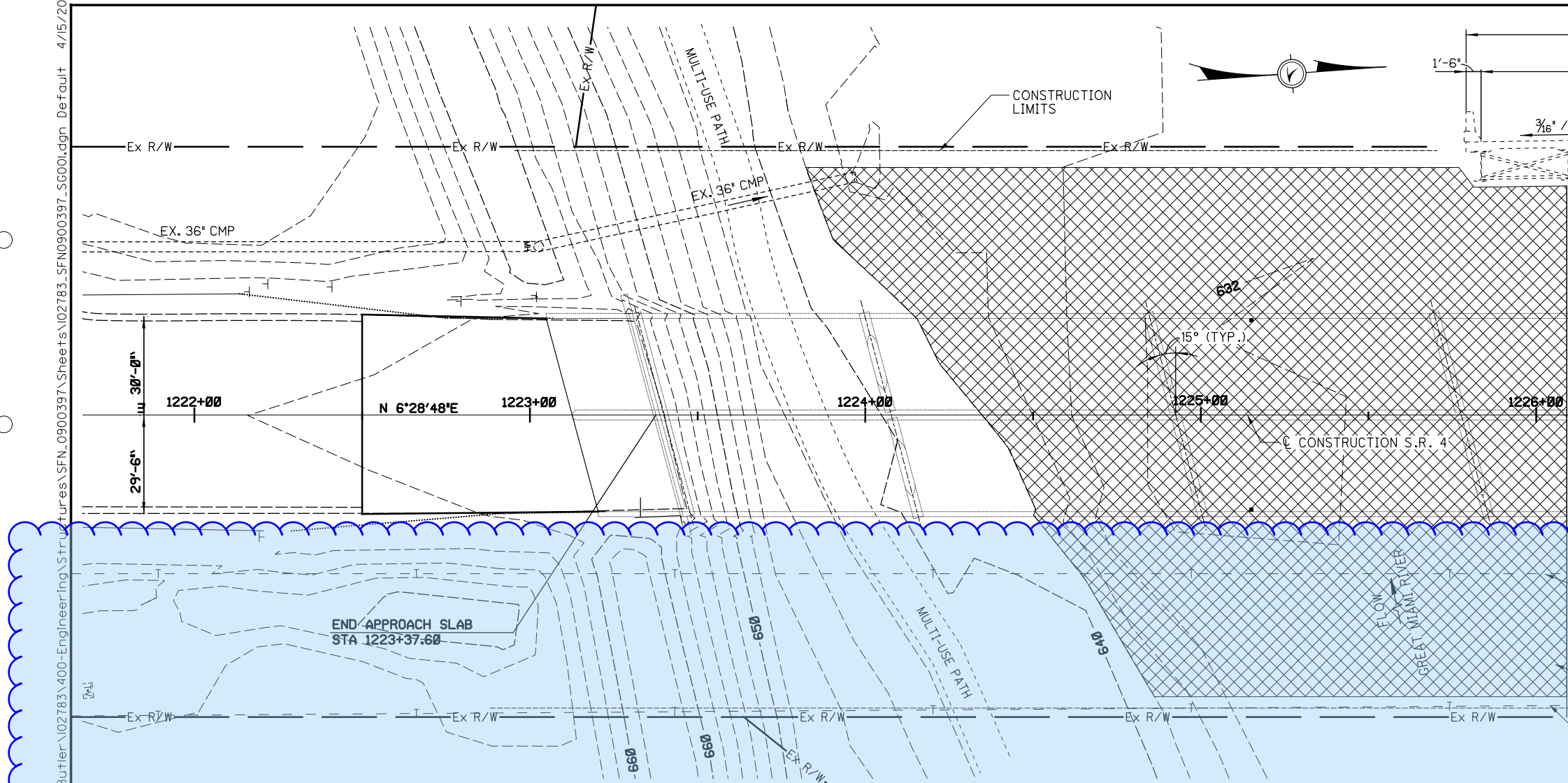




pw:\ohiodot-pw.bentley.com\ohiodot-pw-02\Documents\01 Active Projects\Dis...ct 08\Butler\02783\400-Engineering\Structures\02783\_Sheets\0900397\_SG001.dgn Default 4/15/2024



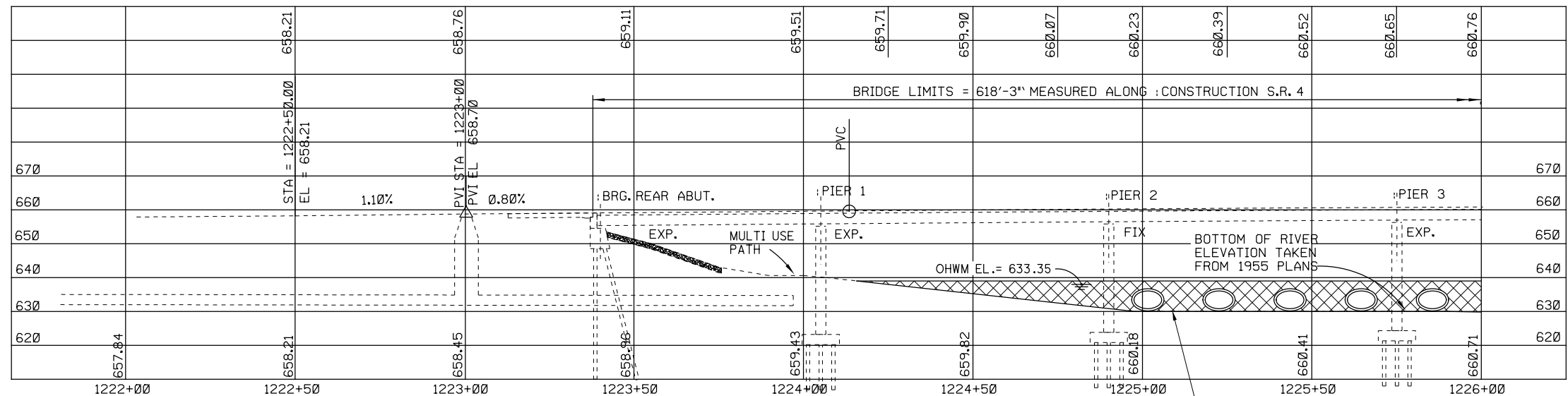
BENCH MARKS	
BM#2 - STA 1220+49.54	LEFT : CHISELED SQUARE NORTH CORNER OF CONCRETE TRAFFIC BOX PAD, SW CORNER OF INTERSECTION OF S.R.4 AND CARMODY BLVD. ELEV.=655.73
BM#3 STA 1229+45.35	L : CHISELED SQUARE ON NW ABUTMENT WALL OF S.R.4 BRIDGE OVER GREAT MIAMI RIVER. ELEV.=661.47

**NOTES:**

- CONTRACTOR SHALL CONTACT UTILITY OWNERS AND VERIFY THE DEPTHS OF EXISTING BURIED UTILITIES PRIOR TO CONSTRUCTING TEMPORARY ACCESS FILL. ANY DAMAGE TO THE EXISTING UTILITIES WILL BE REPAIRED AT THE CONTRACTOR'S EXPENSE.

**PROPOSED WORK**

PATCH THE DETERIORATED AREAS OF PIERS PER ITEM 519. INSTALL COMPOSITE FIBER WRAP SYSTEM IN AREAS DESIGNATED IN THESE PLANS. REMOVE AND REPLACE BOTH PIER CAPS AND 2 FEET OF PIER STEMS AT PIER 4. REMOVE AND REPLACE EXISTING BEARINGS WITH ELASTOMERIC BEARINGS AT PIER 4 LOCATIONS. PAINT ALL STRUCTURAL STEEL IN SPAN 4 AND SPAN 5 LOCATED WITHIN 4'-0" OF PIER 4. PAINT COLOR TO MATCH EXISTING.



**EXISTING STRUCTURE**

TYPE: 8 SPAN STEEL BEAM BRIDGE WITH COMPOSITE CONCRETE DECK SUPPORTED BY REINFORCED CONCRETE SUBSTRUCTURE.

LENGTH OF SPANS: 68', 85', 85', 68', 68', 85', 85', 68' MEASURED C/C BEARINGS ALONG CONSTRUCTION

ROADWAY WIDTH: 57'-7" F/F BRIDGE RAILING

DESIGN LOADING: HS-20-44 CASE II WITH ALTERNATE MILITARY LOADING

SKEW ANGLE: 15°00'00" RIGHT FORWARD

SUPERELEVATION: NONE, NORMAL CROWN

WEARING SURFACE: 1" MONOLITHIC CONCRETE

APPROACH SLAB: AS-1-81 (25' LONG)

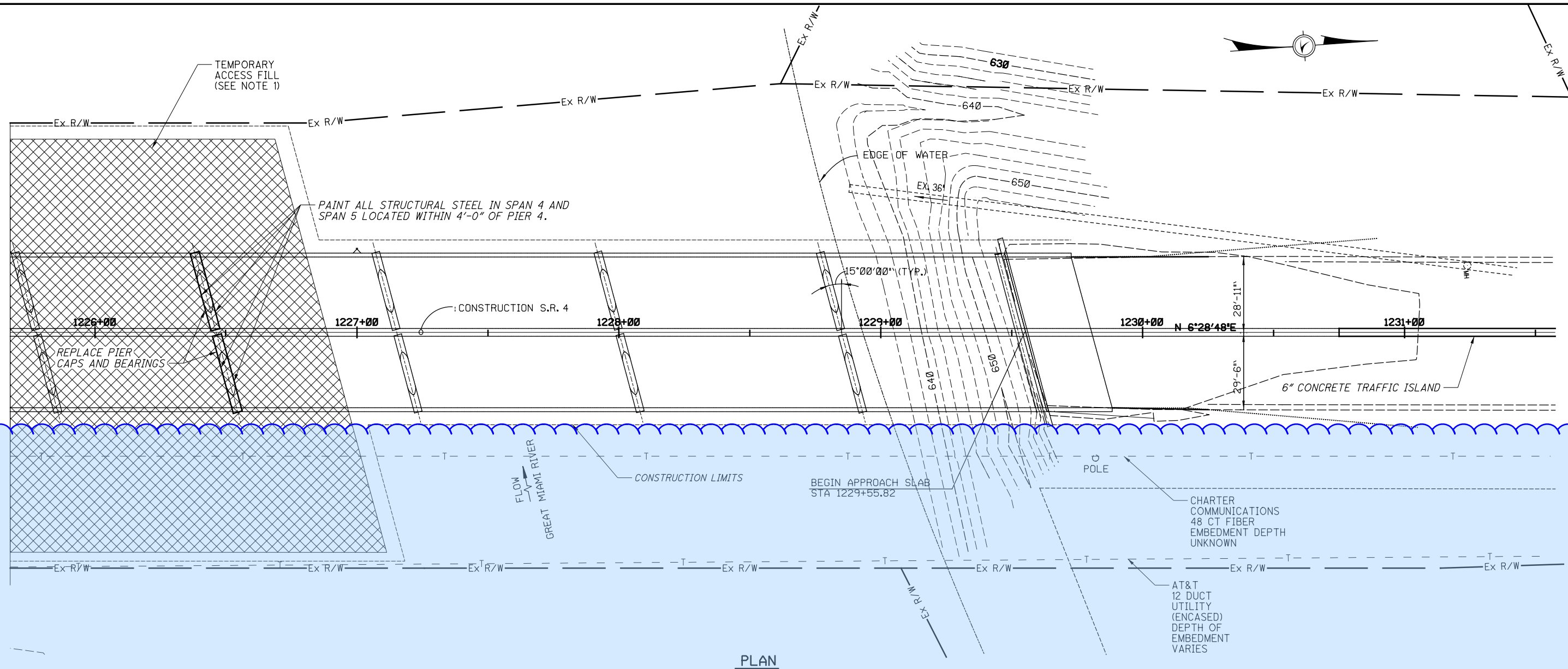
ALIGNMENT: TANGENT

LATITUDE: N 39° 32' 22"

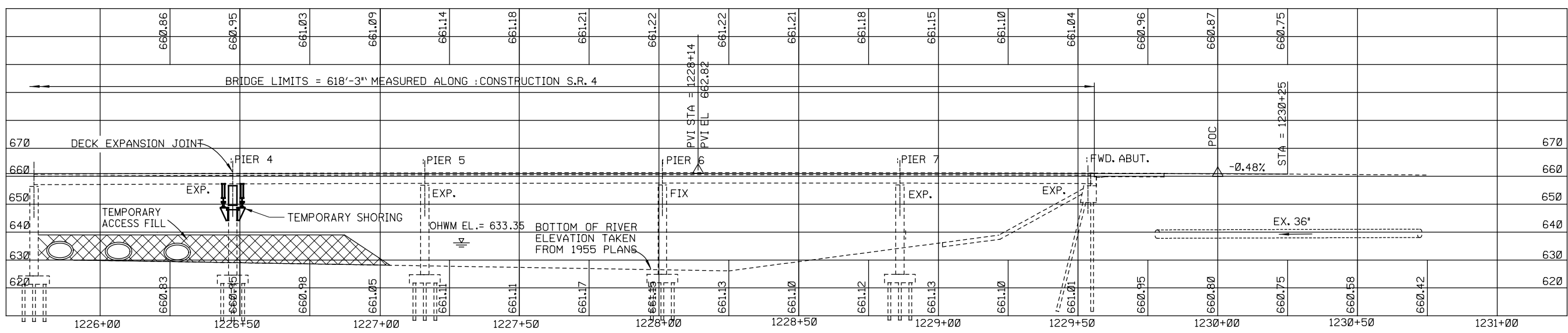
LONGITUDE: W 84° 23' 04"

<b>SITE PLAN - 1</b>	BUTLER COUNTY STA. 1223+37.60 STA. 1229+55.52	DESIGN AGENCY BURGESS & NIPLE 525 VINE ST. CINCINNATI, OHIO
<b>BUT - SR4-23.17</b>	BRIDGE NO. BUT-04-2317 S.R. 4 OVER GREAT MIAMI RIVER	DATE 9/22/21
1 / 14	PID No. 102783	REVIEWED MAB STRUCTURE FILE NUMBER 0900397
8	21	DRAWN JDG REVISIONS
21	21	DESIGNED BCS CHECKED SUA

pw:\ohiodot-pw.bentley.com\ohiodot-pw-02\Documents\01\Active Projects\District 08\Butler\102783\400-Engineering\Structures\0900397\Sheets\102783\_SFN0900397.dgn Default 4/15/2024



PLAN



PROFILE ALONG PROFILE GRADE

<b>SITE PLAN</b>	BRIDGE NO. BUT-04-2317 S.R. 4 OVER GREAT MIAMI RIVER	BUTLER COUNTY STA. 1223+37.60 STA. 1229+55.52	DESIGNED BCS	DRAWN JDG	REVIEWED MAB	DATE 9/22/21	DESIGN AGENCY BURGESS & NIPLE 525 VINE ST. CINCINNATI, OHIO
2 / 14	<b>BUT - SR4 - 23.17</b>	<b>PID No. 102783</b>	CHECKED SJA	REVISED	STRUCTURE FILE NUMBER 0900397		