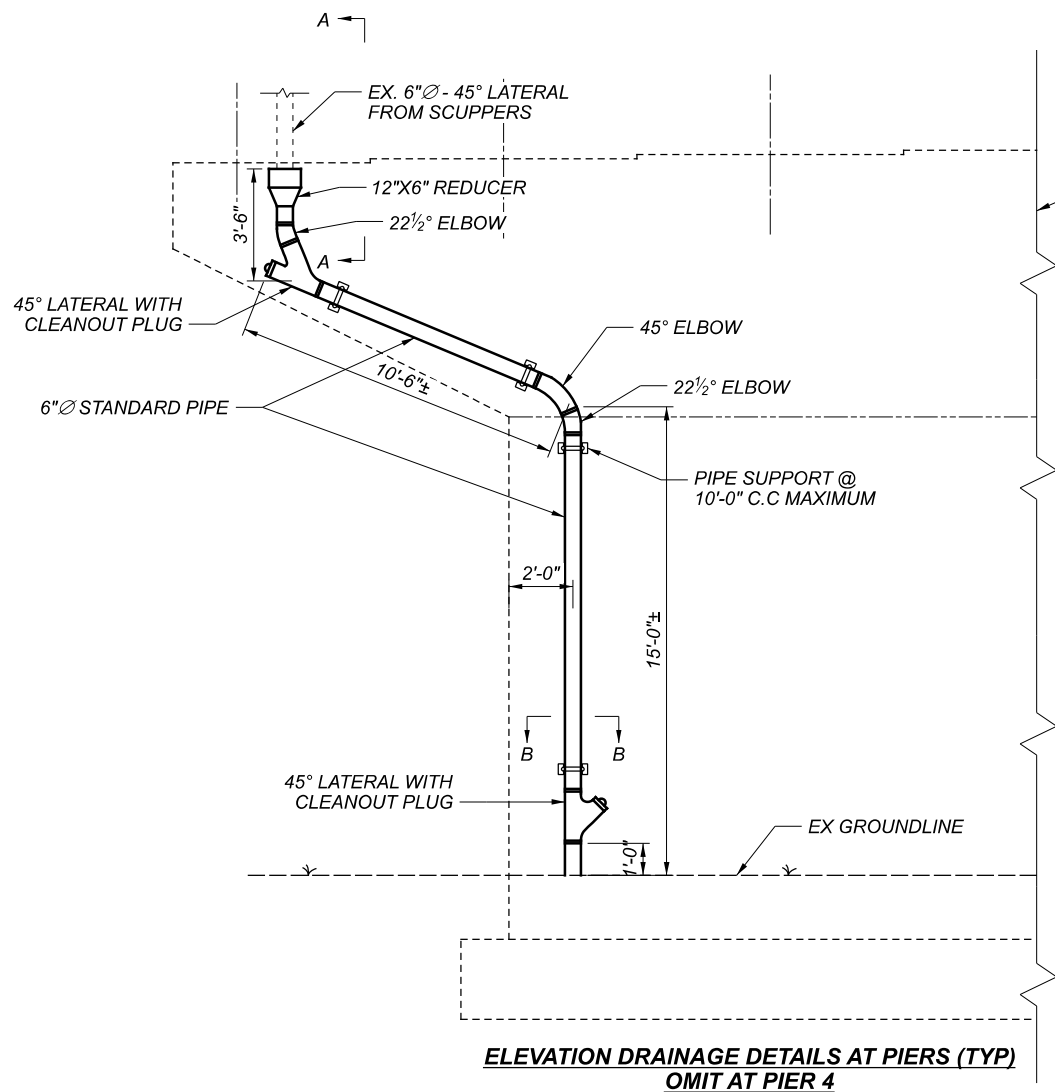
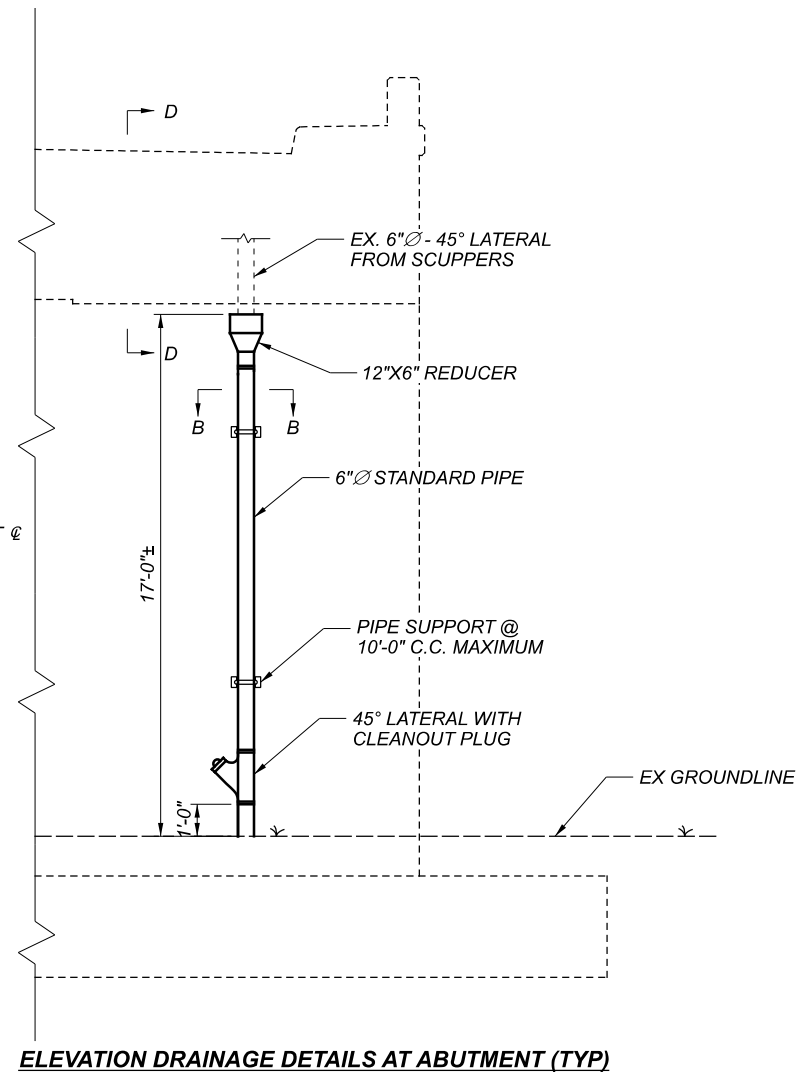


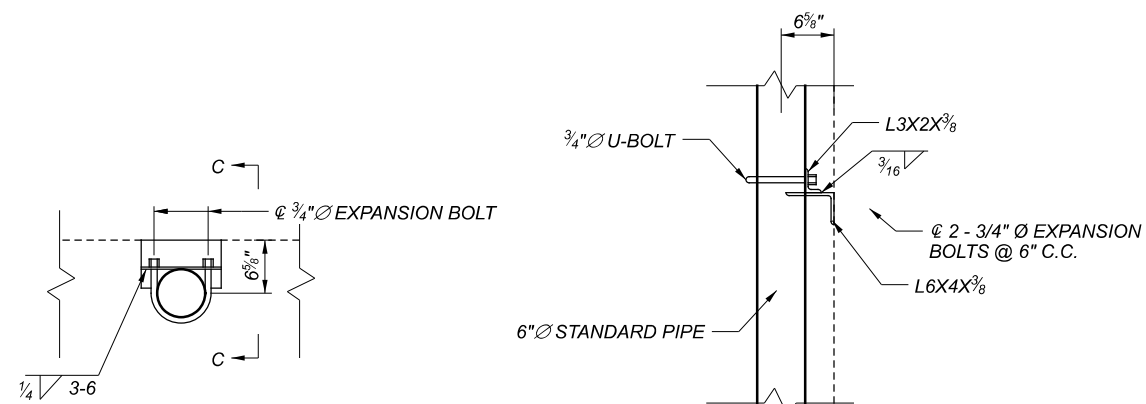
SECTION A-A



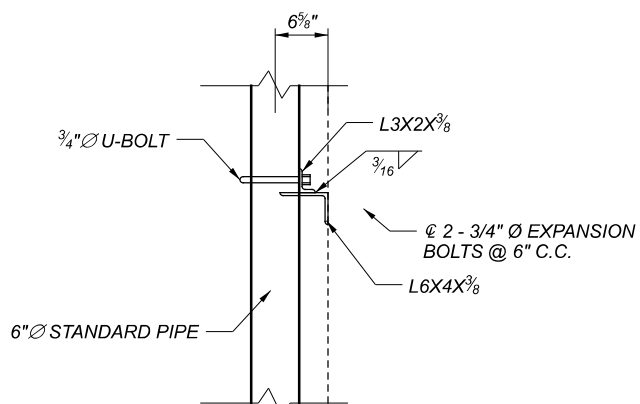
ELEVATION DRAINAGE DETAILS AT PIERS (TYP)  
OMIT AT PIER 4



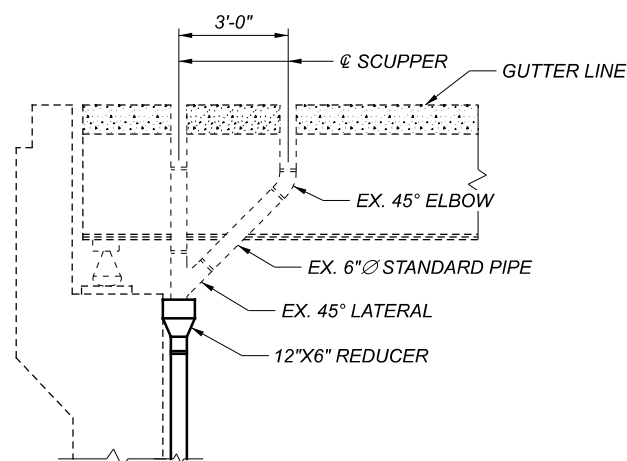
ELEVATION DRAINAGE DETAILS AT ABUTMENT (TYP)



SECTION B-B



SECTION C-C




SECTION D-D

DRAINAGE DETAILS SYMMETRICAL ABOUT  $\phi$

**NOTES**

- REMOVAL OF EXISTING DOWNSPOUTS ARE INCLUDED IN ITEM 202 PORTIONS OF STRUCTURE REMOVED, LS.
- DOWNSPOUT MATERIAL SHALL BE SCHEDULE 40 PVC PIPE, ALL PIPE SUPPORTS SHALL BE GALVANIZED STEEL.
- OFFSET PROPOSED ANCHORS FOR DOWNSPOUT SUPPORT FROM PREVIOUS ANCHORS.
- PAYMENT FOR SUPPORTS, CLEANOUTS, BOLTS, ANGLES, ELBOWS, REDUCERS, ETC. ARE INCLUDED IN LINEAR FT ITEM 518 BID.
- OUTLETS TO ABUTMENT DRAINAGE IS TO EXISTING DRAINAGE GRATES. OUTLETS ON PIER DRAINAGE IS TO EXISTING FLEXIBLE OUTLETS ATTACHED TO THE END OF THE DOWNSPOUT.

SFN	1205463
DESIGN AGENCY	
 DISTRICT 7 ENGINEERING	
DESIGNER	CHECKER
LCG	DHG
REVIEWER	
MRB	04/15/21
PROJECT ID	108063
SUBSET	TOTAL
10	10
SHEET	TOTAL
P.23	23