
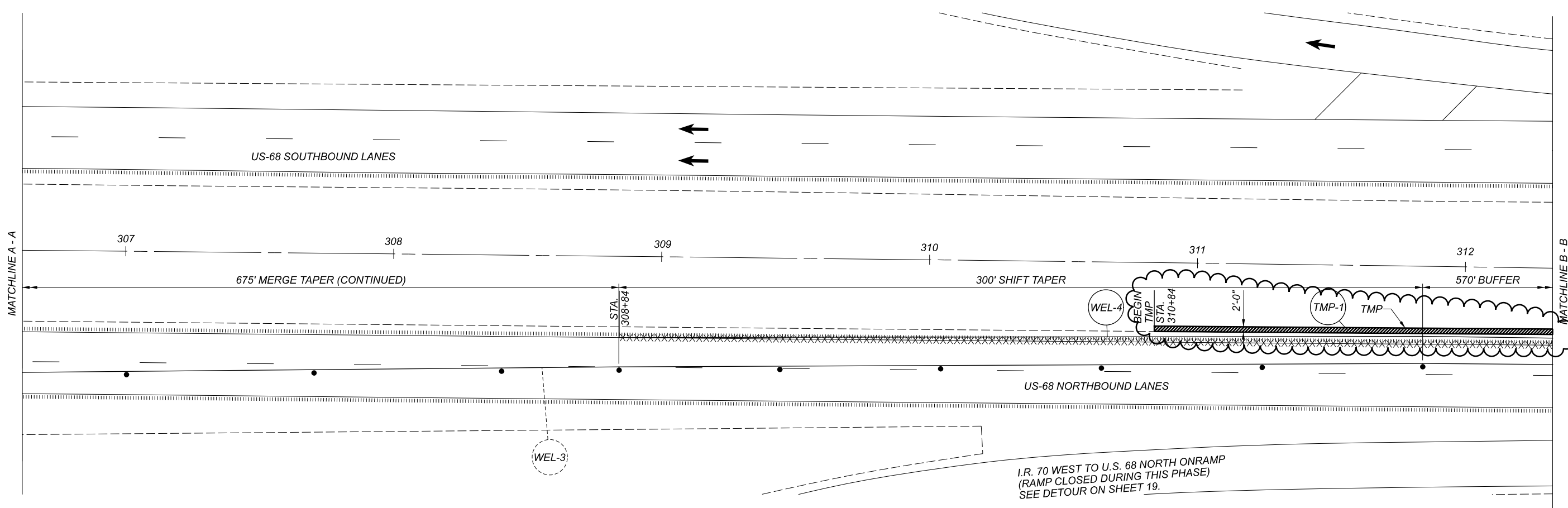


REF NO.	SHEET NO.	STATION TO STATION				614		614		614		614		614		615		622	
						WORK ZONE IMPACT ATTENUATOR, 24" WIDE HAZARDS, (UNIDIRECTIONAL)	WORK ZONE IMPACT ATTENUATOR, 24" WIDE HAZARDS, (BIDIRECTIONAL)	BARRIER REFLECTOR, TYPE 1(ONE WAY)	BARRIER REFLECTOR, TYPE 1(BIDIRECTIONAL)	OBJECT MARKER, ONE WAY	OBJECT MARKER, TWO WAY	WORK ZONE EDGE LINE, CLASS I, 4", 740.06, TYPE I	WORK ZONE DOTTED LINE, CLASS I, 4", 740.06, TYPE I	WORK ZONE STOP LINE, CLASS I, 740.06, TYPE I	PAVEMENT FOR MAINTAINING TRAFFIC, CLASS A	PORTABLE BARRIER, UNANCHORED			
					EACH	EACH	EACH	EACH	EACH	EACH	MILE	FT	FT	SY	FT				
U.S. 68 NORTHBOUND PHASE 1																			
WEL-1	9,10,11	302+47	TO	325+99							0.45								
WEL-2	10	310+87	TO	316+28							0.1								
WDL-1	10,11	316+28	TO	324+37								809							
PCB-1	10,11	318+79	TO	322+97	1		10		10								420		
U.S. 68 NORTHBOUND PHASE 2																			
WEL-3	12,13,14	302+10	TO	323+06							0.4								
WEL-4	13,14	308+84	TO	324+83							0.3								
PCB-2	13,14	315+69	TO	323+06	1		16		16								740		
WEL-5	15,16	601+74	TO	607+25							0.1								
TMP-1	13,14	310+84	TO	320+75													218		
TMP-2	14	322+12	TO	323+69													32		
REBERT PIKE SIGNALIZED CLOSURE																			
WEL-6	17	17+39	TO	22+75							0.1								
WEL-7	18	17+39	TO	22+75							0.1								
PCB-3	17	17+98	TO	21+01		2													
PCB-4	18	18+42	TO	21+01		2												340	
WSL-1	17			16+89														12	
WSL-2	17			23+25														12	
TOTALS CARRIED TO GENERAL SUMMARY					2	4	26	11	26	11	1.55	809	24	250	1550				

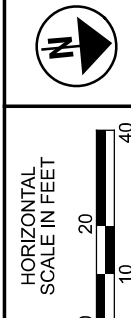
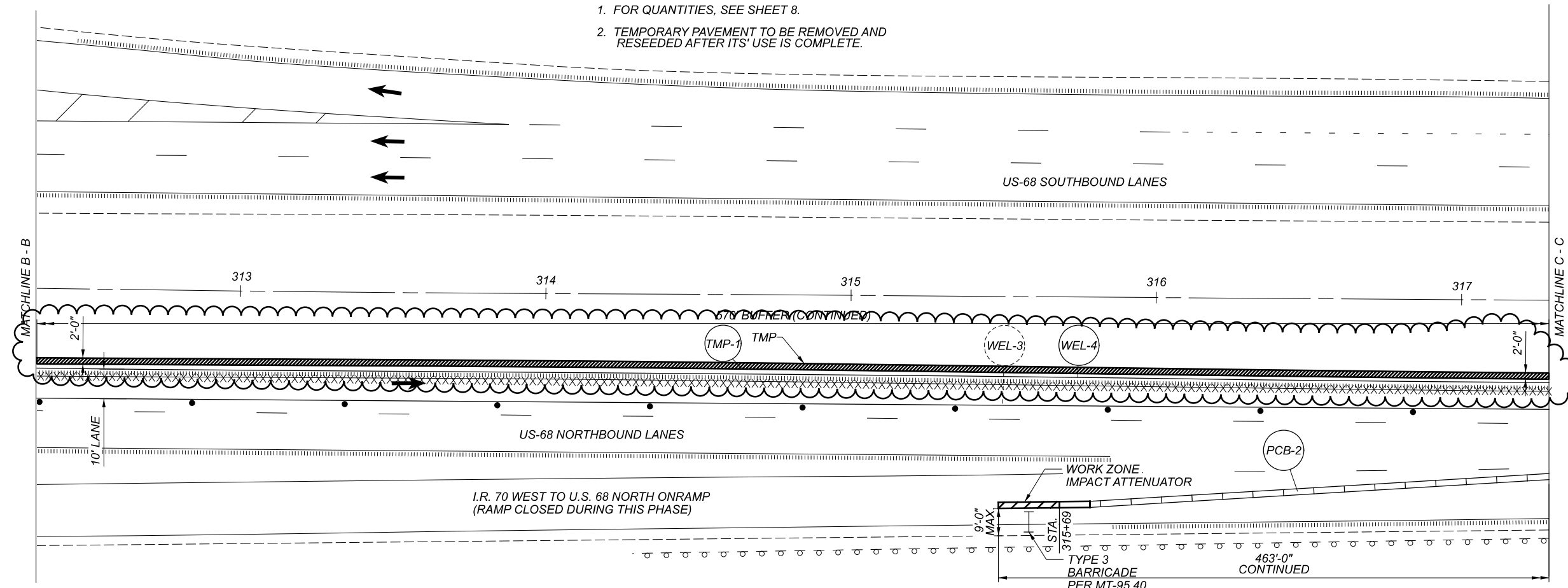
MAINTENANCE OF TRAFFIC SUBSUMMARY

DESIGN AGENCY

 DISTRICT 7
 ENGINEERING
 DESIGNER
 DHG
 REVIEWER
 LCG 04/26/21
 PROJECT ID
 108073
 SHEET TOTAL
 P.08 54



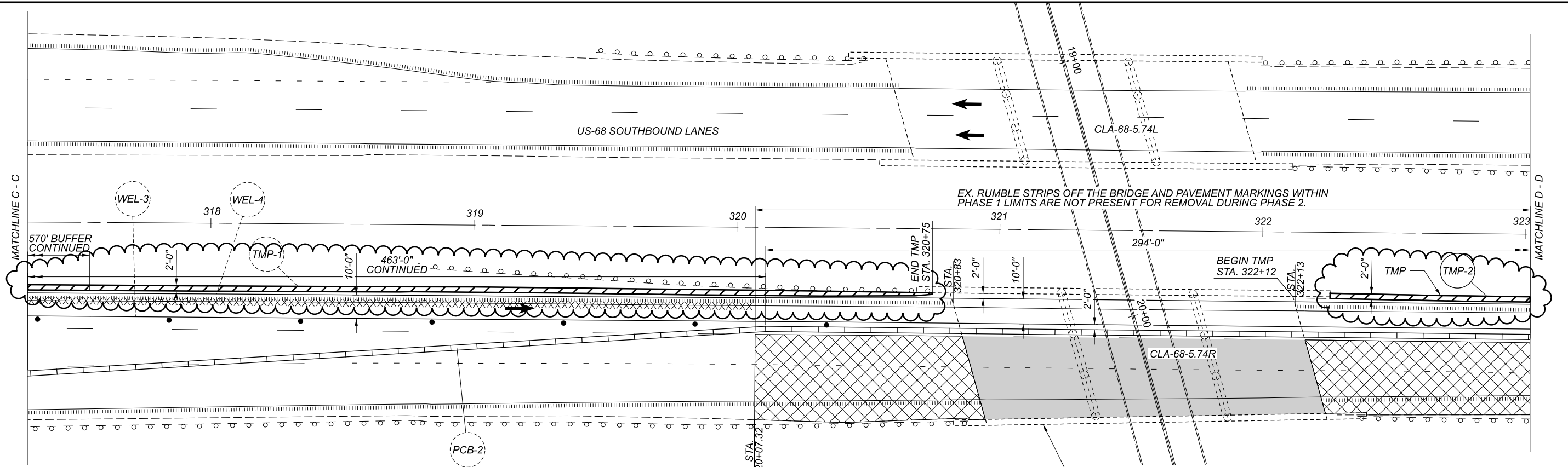
LEGEND & NOTES

- xxxxxxx EX. PAVEMENT MARKING REMOVAL
- TEMPORARY PAVEMENT (TMP)
PLACED IN PHASE 1
- 1. FOR QUANTITIES, SEE SHEET 8.
- 2. TEMPORARY PAVEMENT TO BE REMOVED AND RESEEDDED AFTER ITS' USE IS COMPLETE.



MAINTENANCE OF TRAFFIC (2 OF 5)
CLA-068-0574R - PHASE 2

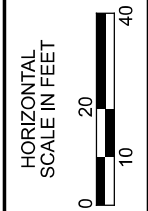
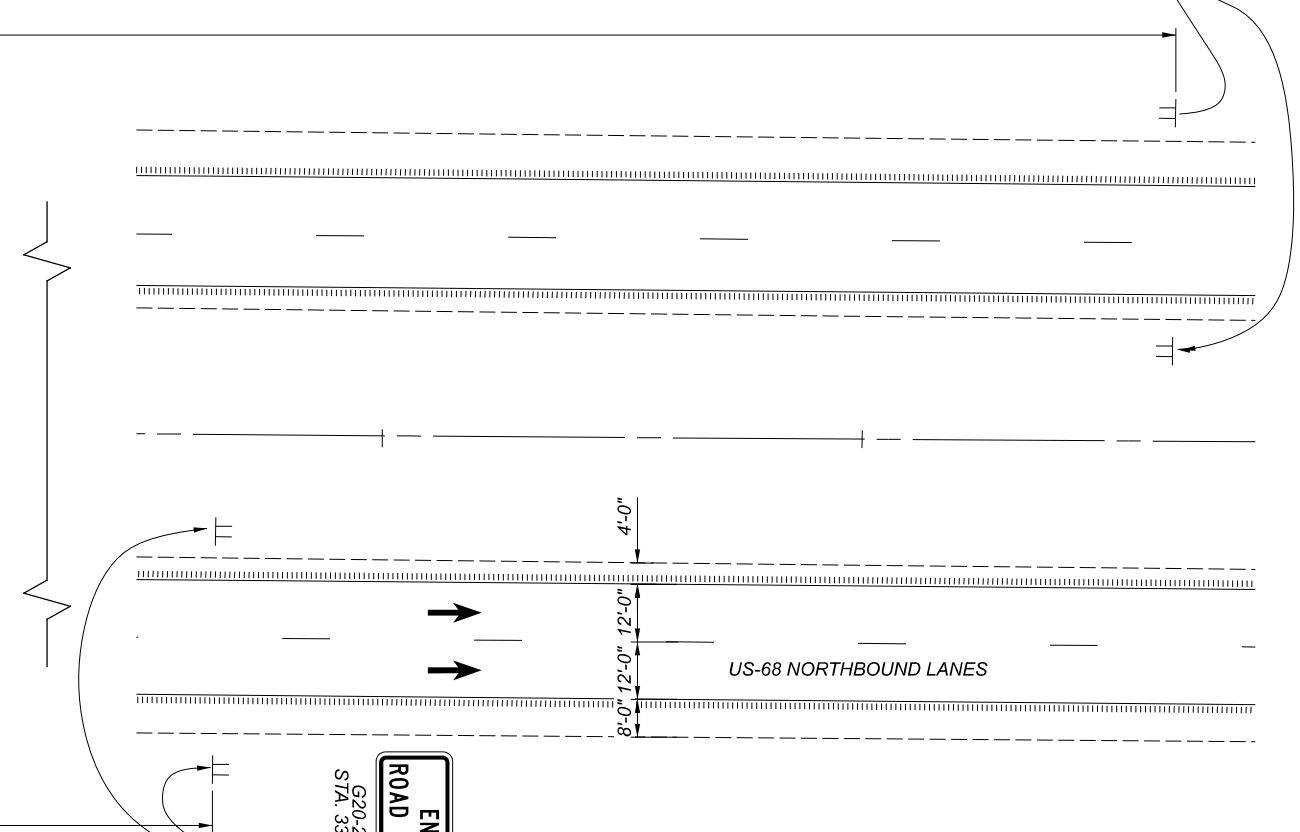
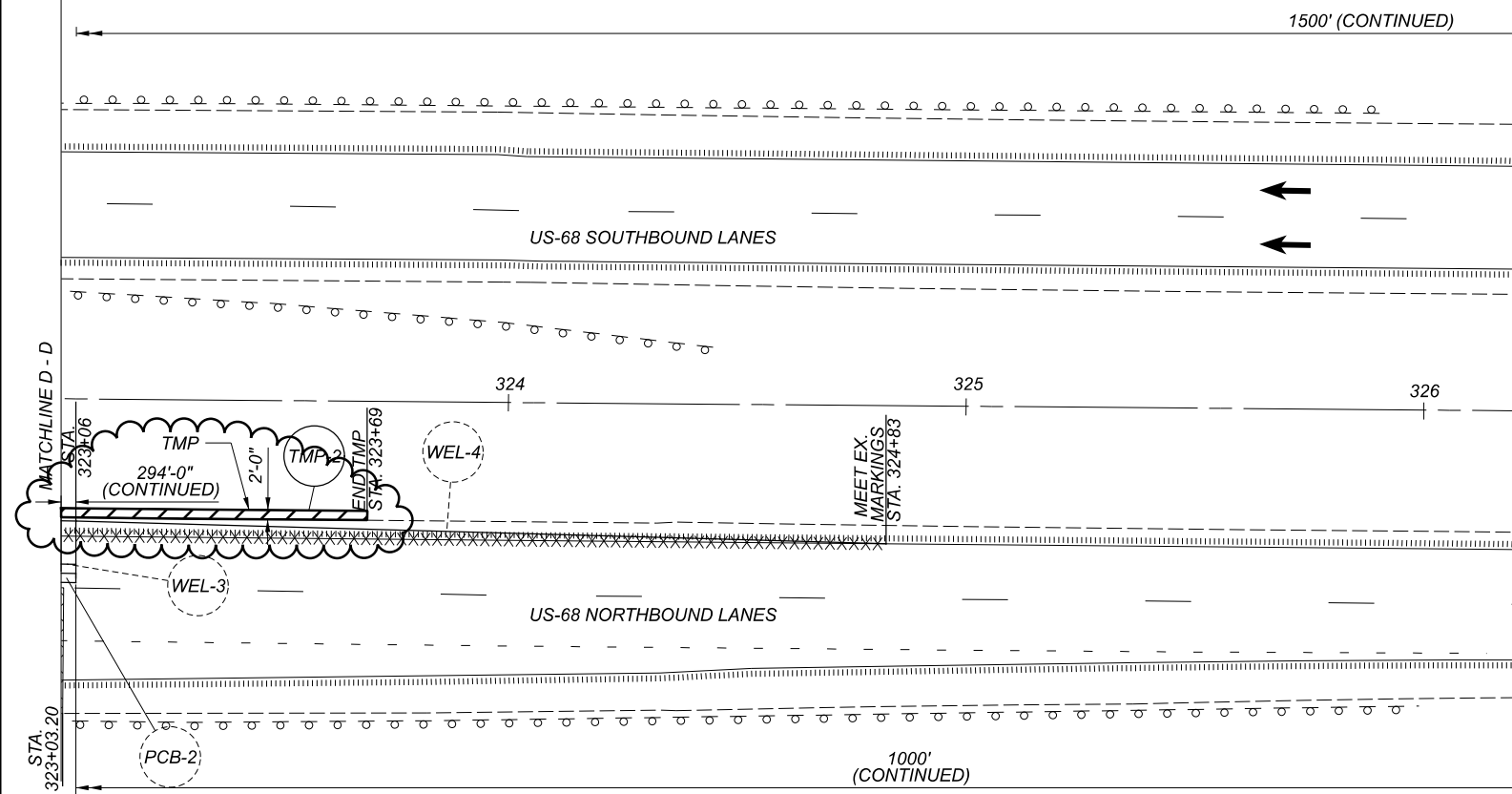
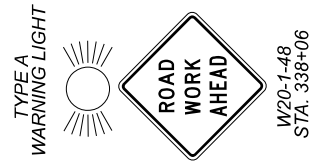
DESIGN AGENCY	
DESIGNER	PJB
REVIEWER	RPH
PROJECT ID	108073
SHEET TOTAL	P.13 54



LEGEND AND NOTES

- | | | | |
|--|---|---------|--|
| | PHASE 2 LATEX OVERLAY WORK AREA | | PORTABLE BARRIER (PB) |
| | PHASE 2 ASPHALT WORK AREA | xxxxxxx | EX. PAVEMENT MARKING REMOVAL |
| | 1. FOR QUANTITIES, SEE SHEET 8. | | TEMPORARY PAVEMENT (TMP) PLACED IN PHASE 1 |
| | 2. TEMPORARY PAVEMENT TO BE REMOVED AND RESEEDDED AFTER ITS' USE IS COMPLETE. | | |


FOR PHASE 2 BRIDGE TRANSVERSE SECTION, SEE SHEET 36.



MAINTENANCE OF TRAFFIC (3 OF 5)
CLA-068-0574R - PHASE 2

DESIGN AGENCY	
DISTRICT 7 ENGINEERING	
DESIGNER	
PJB	
REVIEWER	
RPH 04/20/21	
PROJECT ID	
108073	
SHEET	TOTAL
P.14	54

SHEET NUM.										PART.		ITEM	ITEM EXT	GRAND TOTAL	UNIT	DESCRIPTION	SEE SHEET NO.
6	7	8							01/NHS/BR								
	80									80		614	11110	80	HOUR	MAINTENANCE OF TRAFFIC LAW ENFORCEMENT OFFICER WITH PATROL CAR FOR ASSISTANCE	
		2								2		614	12380	2	EACH	WORK ZONE IMPACT ATTENUATOR, 24" WIDE HAZARDS, (UNIDIRECTIONAL)	
		4								4		614	12384	4	EACH	WORK ZONE IMPACT ATTENUATOR, 24" WIDE HAZARDS, (BIDIRECTIONAL)	
LS										LS		614	12420	LS		DETOUR SIGNING	
2										2		614	12740	2	EACH	WORK ZONE LIGHTING SYSTEM	
										11		614	13310	11	EACH	BARRIER REFLECTOR, TYPE 1(BIDIRECTIONAL)	
										26		614	13310	26	EACH	BARRIER REFLECTOR, TYPE 1(ONE WAY)	
										26		614	13350	26	EACH	OBJECT MARKER, ONE WAY	
										11		614	13360	11	EACH	OBJECT MARKER, TWO WAY	
	2									2		614	18601	2	SNMT	PORTABLE CHANGEABLE MESSAGE SIGN, AS PER PLAN	7
										1.55		614	22200	1.55	MILE	WORK ZONE EDGE LINE, CLASS I, 4", 740.06, TYPE I	
										809		614	24400	809	FT	WORK ZONE DOTTED LINE, CLASS I, 4", 740.06, TYPE I	
										24		614	26400	24	FT	WORK ZONE STOP LINE, CLASS I, 740.06, TYPE I	
										LS		615	10000	LS		ROADS FOR MAINTAINING TRAFFIC	
										250		615	20000	250	SY	PAVEMENT FOR MAINTAINING TRAFFIC, CLASS A	
										1,550		622	41100	1,550	FT	PORTABLE BARRIER, UNANCHORED	
										LS		614	11000	LS		INCIDENTALS MAINTAINING TRAFFIC	
										5		619	16010	5	MNTH	FIELD OFFICE, TYPE B	
										LS		623	10000	LS		CONSTRUCTION LAYOUT STAKES AND SURVEYING	
										LS		624	10000	LS		MOBILIZATION	

DESIGN AGENCY

 DISTRICT 7
 ENGINEERING
 DESIGNER
 DHG
 REVIEWER
 LCG 04/26/21
 PROJECT ID
 108073
 SHEET TOTAL
 P.23 54