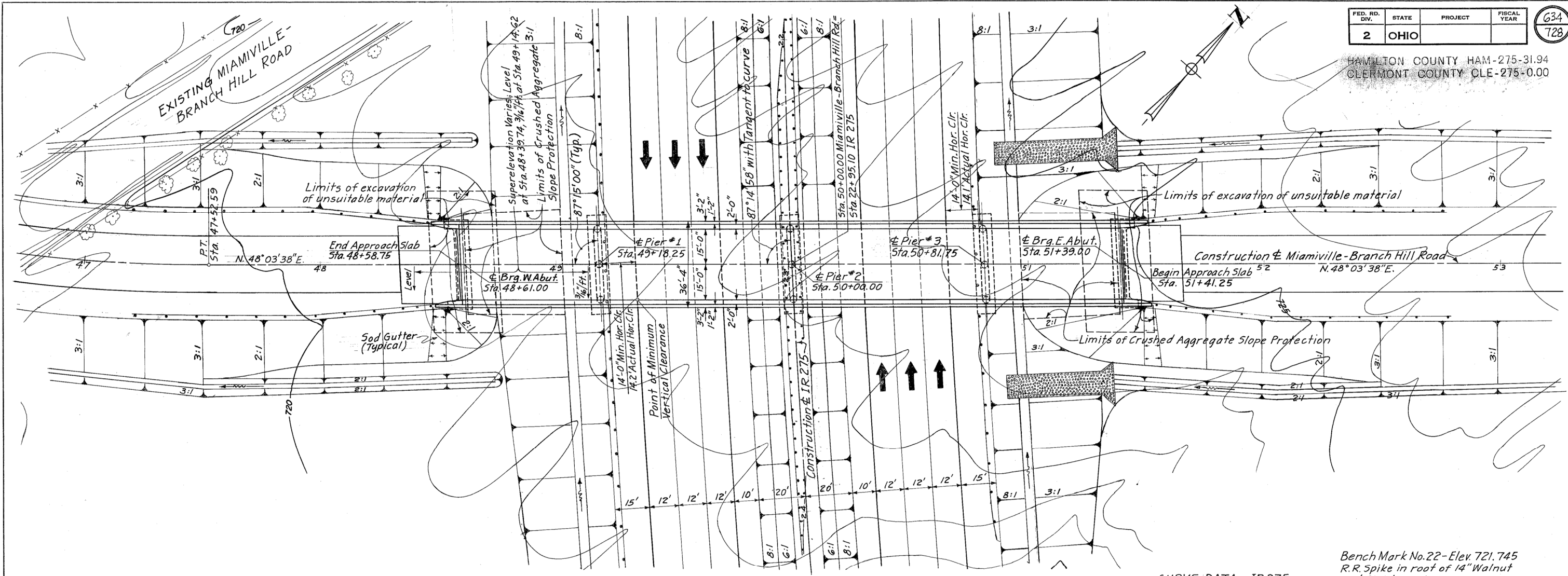


HAMILTON COUNTY HAM-275-31.94
CLERMONT COUNTY CLE-275-0.00



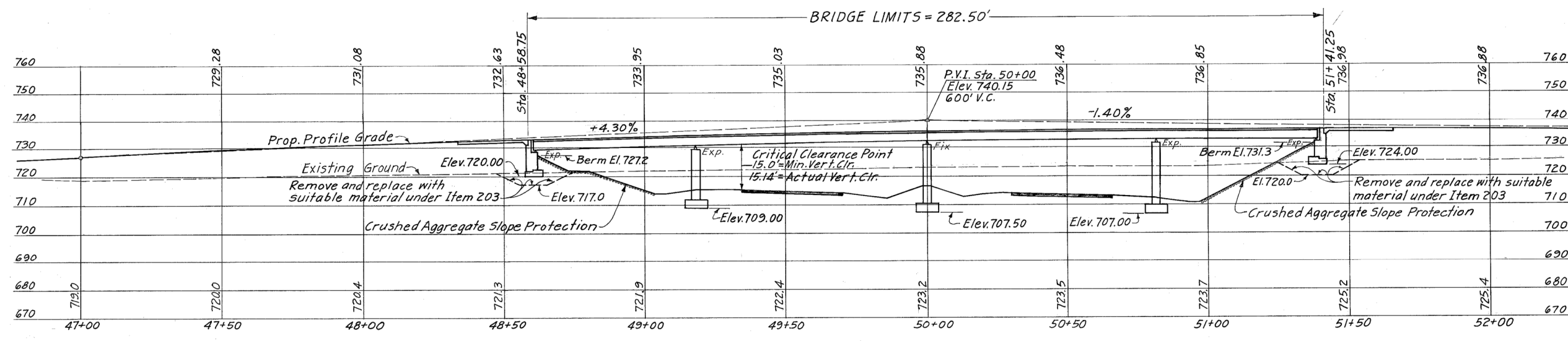
Abutments and Piers are parallel.

CURVE DATA - IR 275
 P.I. = 21+10.01
 $\Delta = 14^\circ 59' 43''$
 $D_c = 1^\circ 00' 00''$
 $R = 5,729.58'$
 $T = 754.07'$
 $L = 1,499.52'$
 $E = 49.41'$

Bench Mark No. 22 - Elev. 721.745
 R.R. Spike in root of 14" Walnut
 173' Right of Sta. 22+00

TRAFFIC COUNT: 1988 ADT = 1075

JAN 11 1985



PROPOSED STRUCTURE
 TYPE: Continuous steel beams with reinforced conc. deck & substructure.
 SPANS: 57'-3", 81'-9", 81'-9" and 57'-3" c.to.c. Bearings.
 ROADWAY: 30'-0" f/f of 2'-0" safety curbs.
 LOAD FREQUENCY: C.F. = 130 (57)
 SKEW: 2°-45' RF
 WEARING SURFACE: 1" Monolithic Concrete.
 APPROACH SLABS: A5-I-67 Special (25' long)
 ALIGNMENT: Tangent
 SUPERELEVATION: See Plan
 H&E Sheet No. B-1

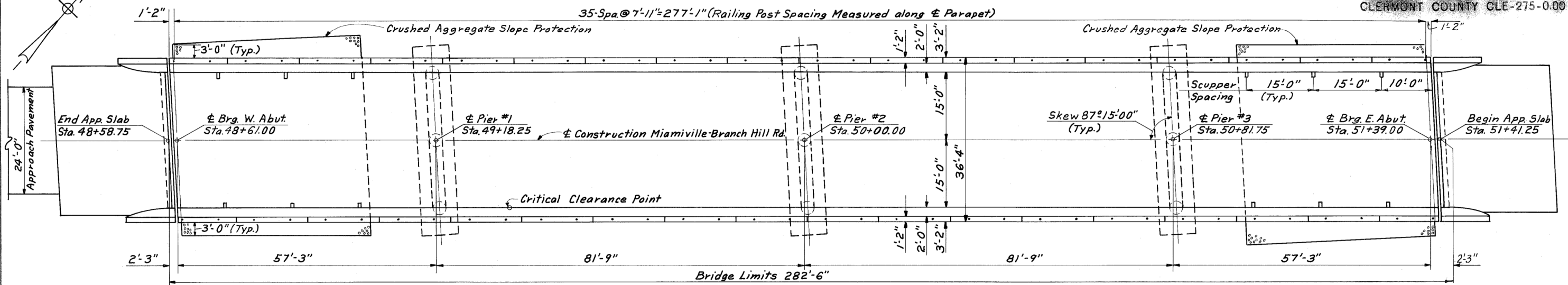
HAZELET & ERDAL CONSULTING ENGINEERS CINCINNATI, OHIO					
SITE PLAN					
BRIDGE NO. CLE-275-0044			CLERMONT CO. IR-275		
SEC. STA. 22+95.10 - IR-275 = SCALE 1"=20' STA. 50+00 MIAMIVILLE-BRANCH HILL RD.					
DESIGNED	DRAWN	TRACED	CHECKED	REVIEWED DATE	REVISED
TLZ	MDC	RHC	JHO	1-12-67	

MICROFILMED
JAN 11 1968

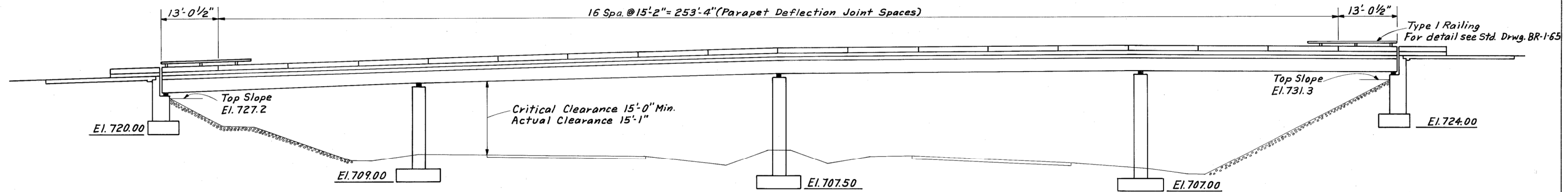
FED. RD. DIV.	STATE	PROJECT	FISCAL YEAR
2	OHIO		

635
728

HAMILTON COUNTY HAM-275-31.94
CLERMONT COUNTY CLE-275-0.00



PLAN



ELEVATION

H & E Sh. No. B-2

HAZELET & ERDAL
CONSULTING ENGINEERS
CINCINNATI, OHIO

PLAN AND ELEVATION
BRIDGE NO. CLE-275-0044
UNDER MIAMIVILLE-BRANCH HILL ROAD

DESIGNED	DRAWN	TRACED	CHECKED	REVIEWED DATE	REVISION
	ME	RJS	NEN	JHO 1-12-67	

MICROFILMED
JAN 11 1965

ESTIMATED QUANTITIES

FED. RD. DIV.	STATE	PROJECT	FISCAL YEAR
2	OHIO		

636
728

HAMILTON COUNTY HAM-275-31.94
CLERMONT COUNTY CLE-275-0.00

GENERAL NOTES

ESTIMATED QUANTITIES									
Item	Total	Unit	Description	Superstr.	Piers	Abuts.	General		
503	520	Cu. Yds.	Unclassified Excavation		330	190			
509	133,760	Lbs.	Reinforcing Steel	79,308	46,738	7,714			
511	294	Cu. Yds.	Class "C" Concrete, Superstructure	294					
511	82	Cu. Yds.	Class "C" Concrete, Pier Caps & Columns		82				
511	112	Cu. Yds.	Class "C" Concrete, Pier Footings		112				
511	145	Cu. Yds.	Class "C" Concrete, Abutments			145			
513	252,000	Lbs.	* Structural Steel	252,000					
514	252,000	Lbs.	* Field Painting of Structural Steel	252,000					
517	606	Lin. Ft.	Bridge Railing (Type 1)	559		47			
518	32	Cu. Yds.	Porous Backfill			32			
518	12	Each	Scuppers, Including Supports	12					
518	58	Lin. Ft.	6" Perforated, Helical CMP, Including Specials, 707.01			58			
518	80	Lin. Ft.	6" Non-Perforated, Helical CMP, 707.01			80			
601	445	Sq. Yds.	Crushed Aggregate Slope Protection				445		
808	294	Units	Water-Reducing, Set-Retarding Admixture	294					
825	1,296	Sq. Yds.	Concrete Surface Treatment	1,253		43			

REFERENCE shall be made to Standard Drawings SD-1-69 Sheets 1,2,3&4 dated 6-12-69; BR-1-65 Sheet 1 Revised 11-24-65; RB-1-55 revised 2-2-59; AS-1-67 revised 6-12-69 and Supplemental Specifications 808 dated 1-1-69, 811 dated 1-1-69, and 825 dated 1-1-69.

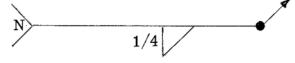
DESIGN SPECIFICATIONS: This structure conforms to the requirements of "Design Specifications for Highway Structures" of the State of Ohio, Department of Highways, dated 9-1-57, together with current revisions thereof.

EXCAVATION QUANTITY includes the removal of fill material required for the construction of the Abutments.

FOUNDATION BEARING PRESSURE: Footings are designed for a maximum bearing pressure of 2 tons per square foot.

DESIGN DATA:
Design Loading - CF = 130(57)
Concrete Class "C" - unit stress 1333 psi for substructure
Concrete Class "C" - unit stress 1200 psi for superstructure
Structural Steel - ASTM A36 unit stress 20,000 psi
Reinforcing Steel - ASTM A615, A616, or A617 unit stress 20,000 psi. Spiral reinforcement shall be plain, bars ASTM A306 or A499.

EXCAVATION OF UNSUITABLE MATERIALS: After the unsuitable materials have been removed to elevation 717 at the west abutment and 720 at the east abutment, as shown on the Site Plan, the Engineer shall make careful inspection to ascertain that all unsuitable materials have been removed to a stable subsoil. If necessary, the excavation limits shall be extended to remove additional unsuitable materials. Unsuitable materials so removed shall be replaced with embankment materials meeting the requirements of Section 203 of the Specifications.

WELDS: Welds on non-stress carrying members are shown thus 

END DAM PAINTING: Portions of end dams which will be in contact with steel or with concrete shall not be painted. All other portions shall be cleaned and painted in accordance with 514.

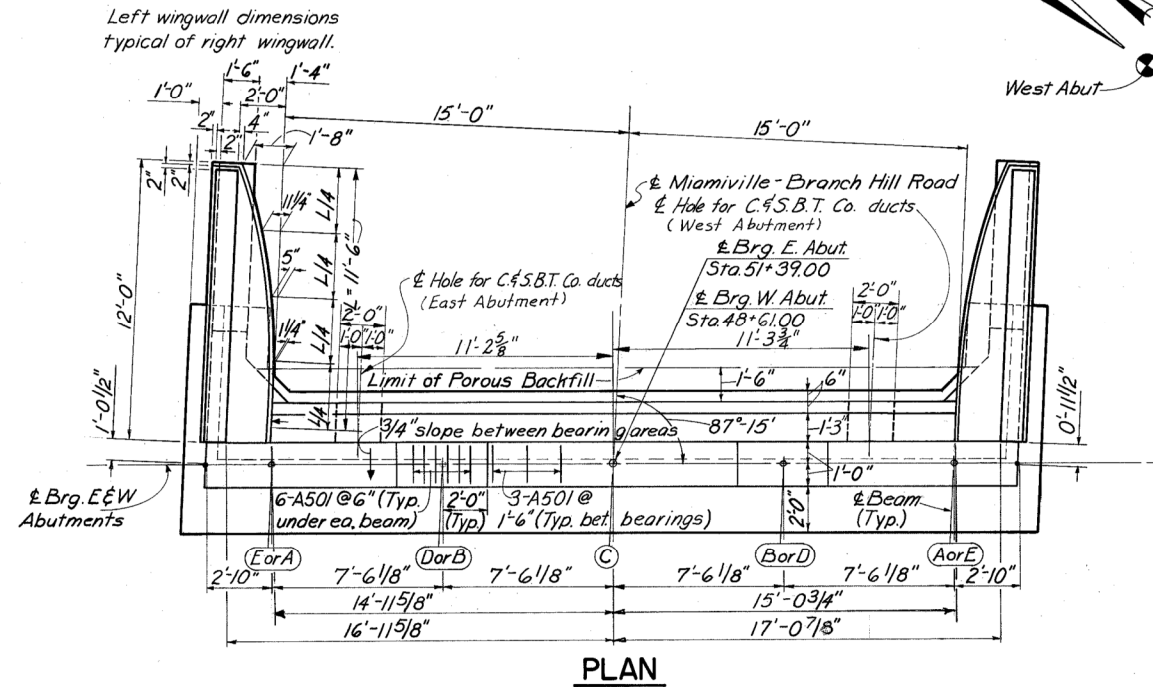
STAINLESS STEEL FASTENERS: shall be properly passivated to remove surface impurities and shall be furnished with a lustrous finish.

* Items Chargeable to Cincinnati and Suburban Bell Telephone Company			
Item	Total	Unit	Description
513	2000	Lbs.	Structural Steel
514	2000	Lbs.	Field Painting of Structural Steel

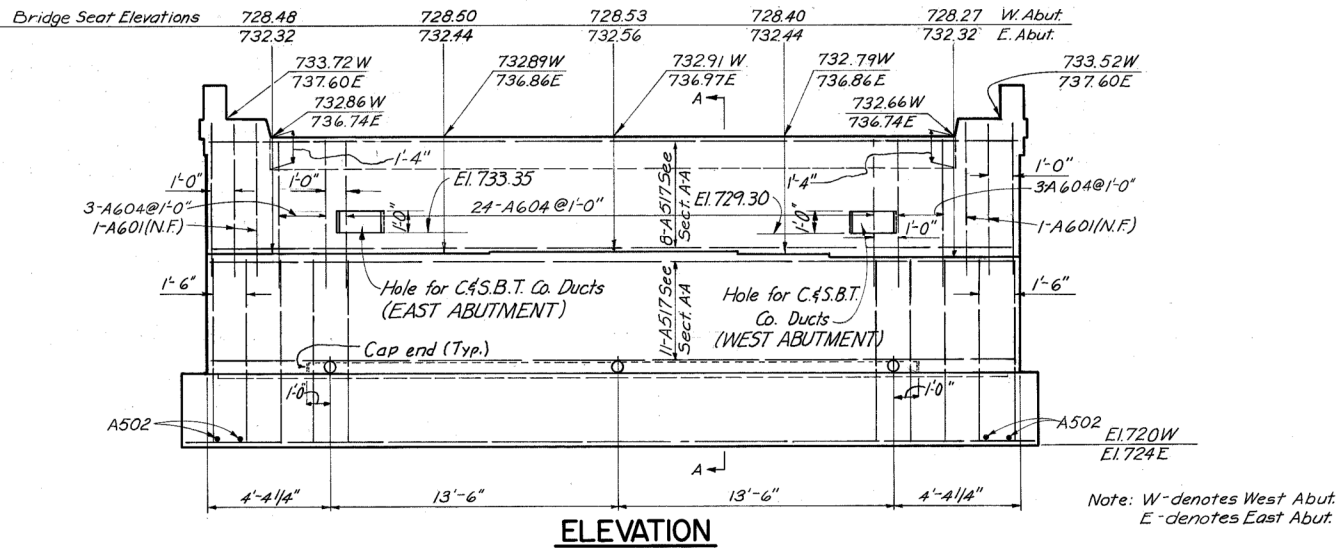
QUANTITIES CHECKED
 BY D. Lundy DATE 4-26-66

H&E Sheet No. B-3

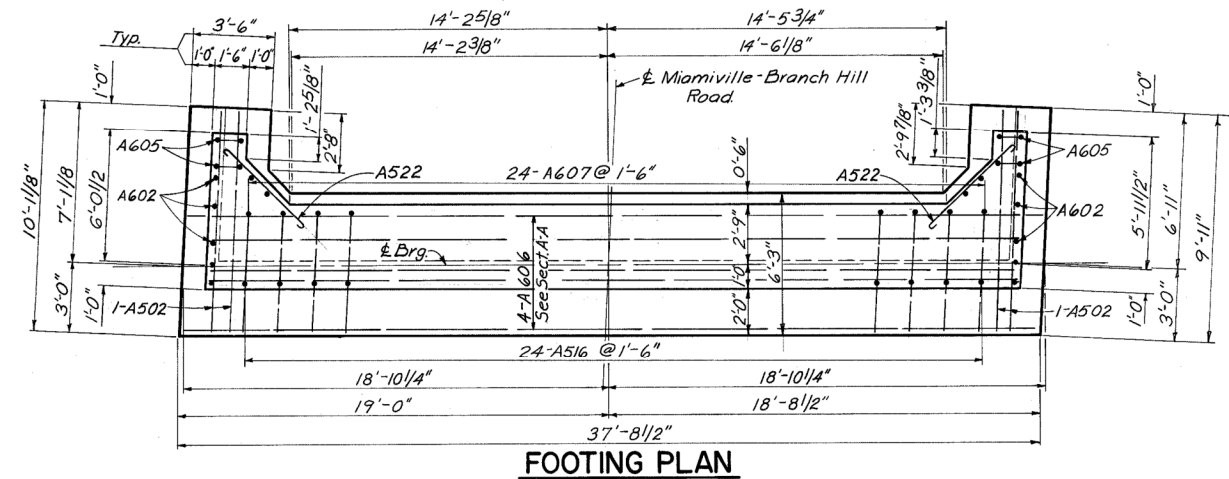
HAZELET & ERDAL CONSULTING ENGINEERS CINCINNATI, OHIO					
GENERAL NOTES & ESTIMATED QUANTITIES					
BRIDGE NO. CLE-275-0044 UNDER MIAMIVILLE-BRANCH HILL ROAD					
CLERMONT COUNTY STA. 22+95.10 IR. 275					
DESIGNED	DRAWN	TRACED	CHECKED	REVISION DATE	REVISION
	DH		NEN	JHC 6-25-69	



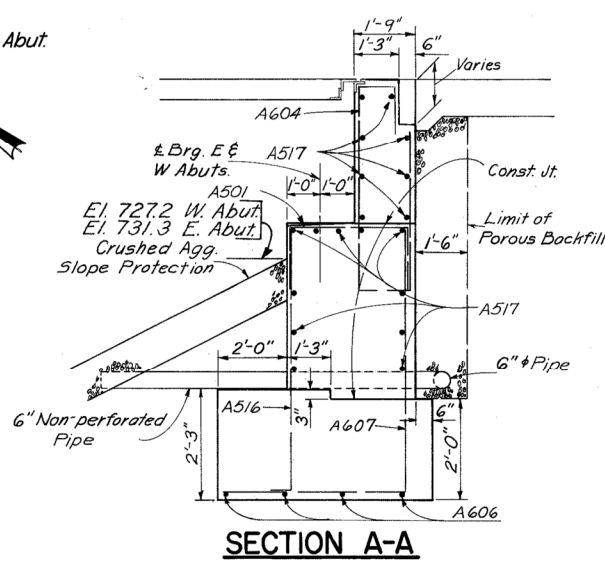
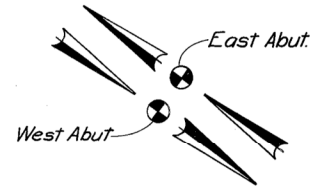
PLAN



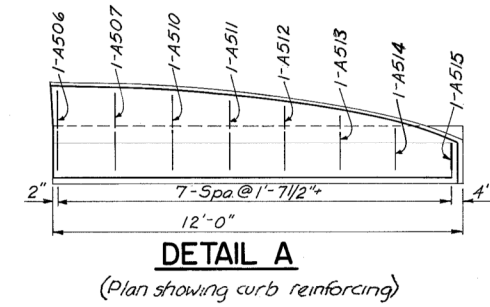
ELEVATION



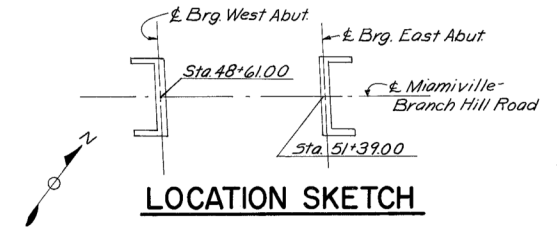
FOOTING PLAN



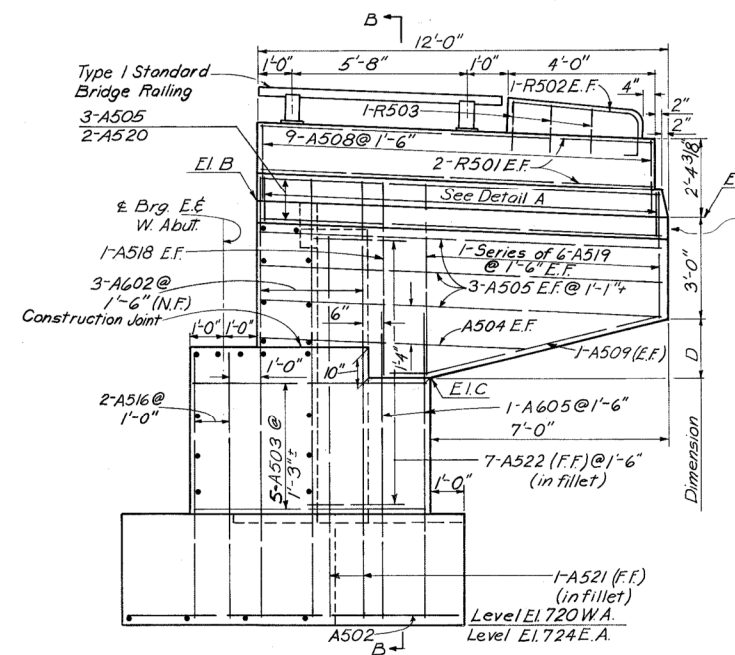
SECTION A-A



DETAIL A
(Plan showing curb reinforcing)



LOCATION SKETCH

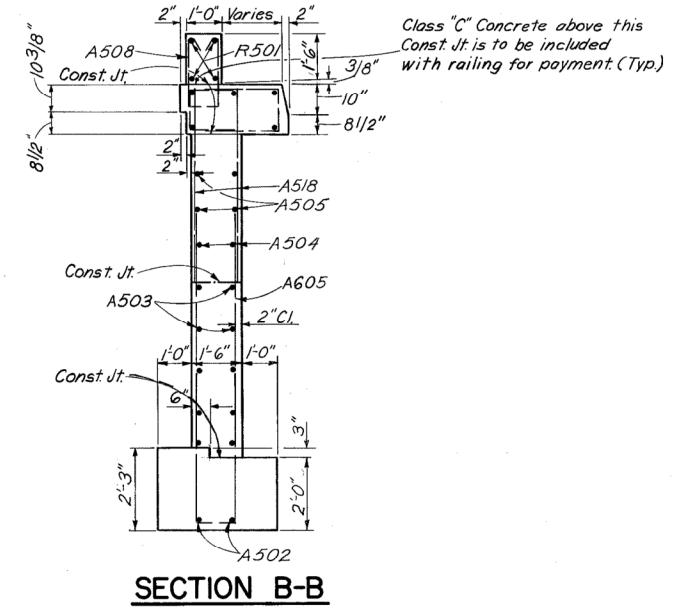


TYPICAL WING WALL ELEVATION

Location	Elevation			Dimension	
	A	B	C	D	
West Lt.WW	732.10	732.66	727.44	1'-8"	
Abut. Rt.WW	732.30	732.86	727.65	1'-7 3/4"	
East Lt.WW	736.50	736.74	731.49	2'-0 1/8"	
Abut. Rt.WW	736.50	736.74	731.49	2'-0 1/8"	

Notes:
E.F. Denotes Each Face
N.F. Denotes Near Face
F.F. Denotes For Face
For End Post Details see Std. Drwg. BR-1-65, Sh.1
Provide 3" clearance for reinforcing steel in footing
Top of pavement elevations are at front face of backwall
For End Dam Details see Std. Drwg. SD-1-69, Sh.1

Procedure: The existing unsuitable material shall be excavated as shown on sheet G34 then replaced and compacted with embankment material. The embankment shall be placed and compacted up to the finished spill-thru slope and to Elev. 727.2 at the West Abutment and Elev. 731.3 at the East Abutment after which excavation shall be made for the abutments.



SECTION B-B

H&E Sh. No. B-4

HAZELET & ERDAL
CONSULTING ENGINEERS
CINCINNATI, OHIO

ABUTMENTS & WING WALL DETAILS
BRIDGE No. CLE-275-0044
UNDER MIAMIVILLE-BRANCH HILL ROAD
CLERMONT COUNTY STA. 22+95.10 IR 275

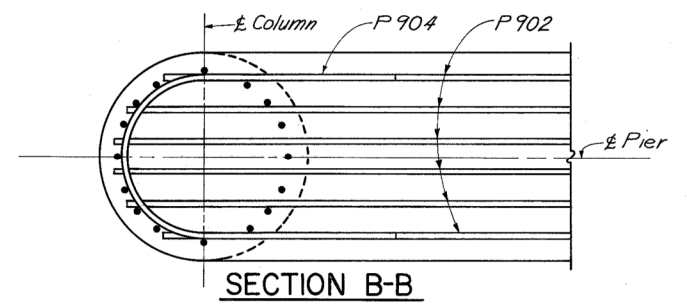
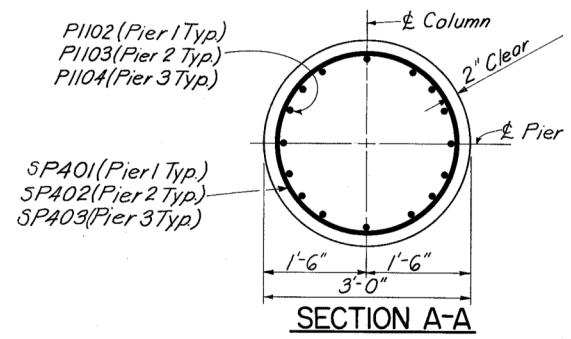
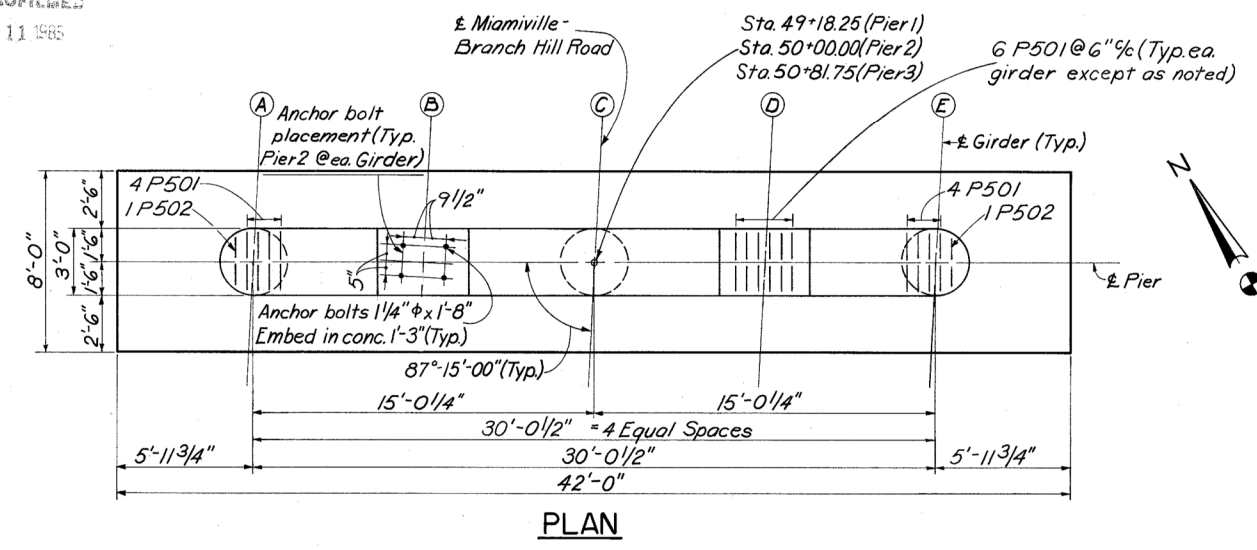
DESIGNED	DRAWN	TRACED	CHECKED	REVIEWED DATE	REVISION
	MJE		NEN	JHO 1-12-67	

MICROFILMED
JAN 11 1965

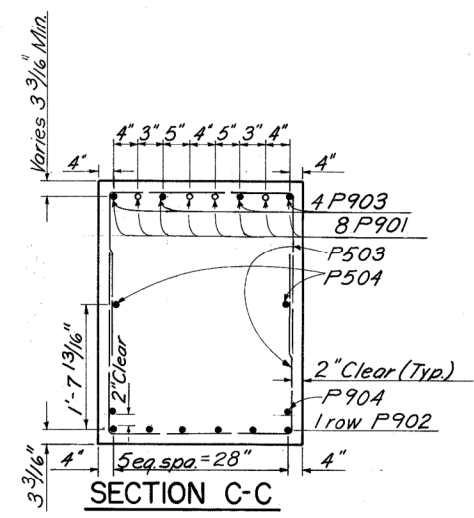
FED. RD. DIV.	STATE	PROJECT	FISCAL YEAR
2	OHIO		

638
728

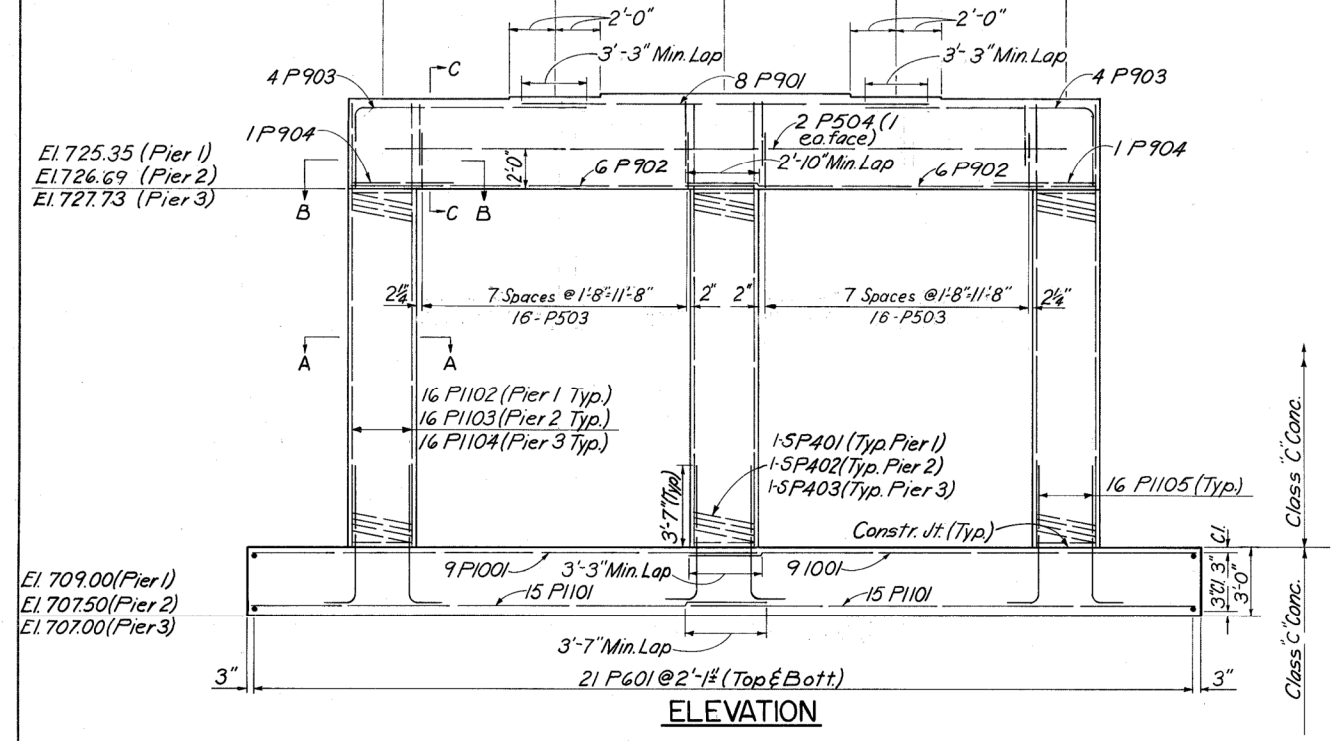
HAMILTON COUNTY HAM-275-31.94
CLERMONT COUNTY CLE-275-0.00



Bridge Seat El. (Pier 1)	729.35	729.48	729.60	729.49	729.38
Bridge Seat El. (Pier 2)	730.69	730.81	730.93	730.82	730.71
Bridge Seat El. (Pier 3)	731.73	731.85	731.97	731.86	731.74



Notes:
Special care shall be taken in placing reinforcing steel in Pier No. 2 in the vicinity of the bridge seat so that it will not interfere with the drilling of the anchor bolt holes.



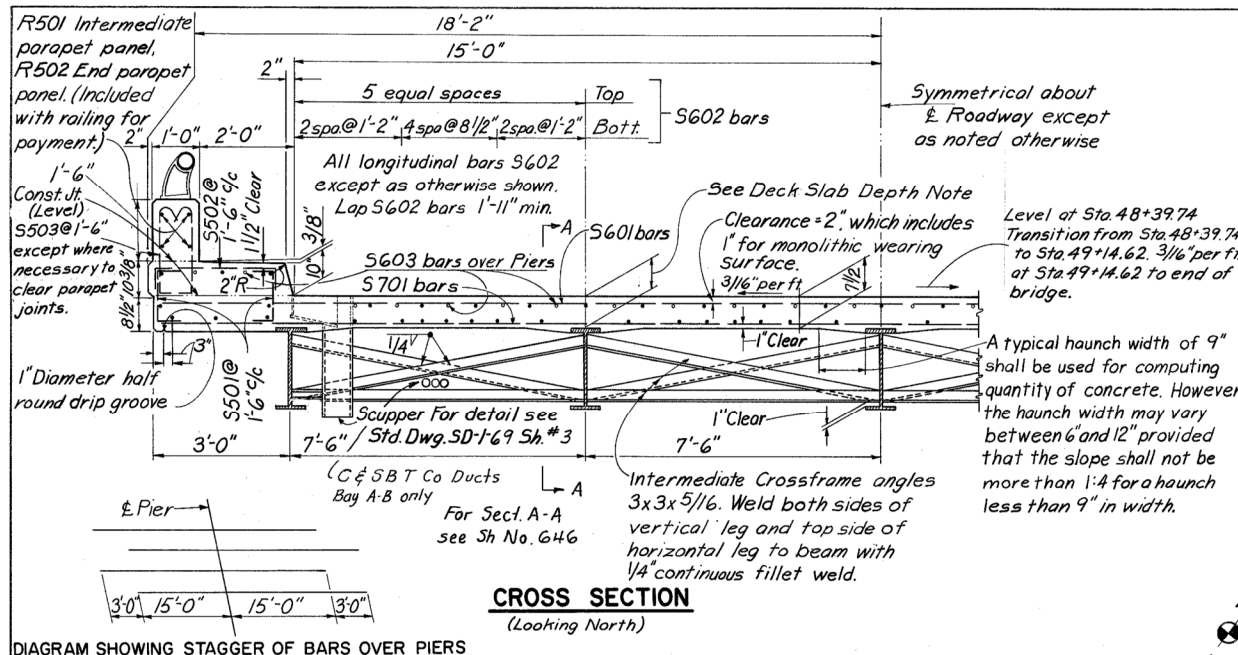
H&E Sh. No. B-5

HAZELET & ERDAL
CONSULTING ENGINEERS
CINCINNATI, OHIO

PIERS

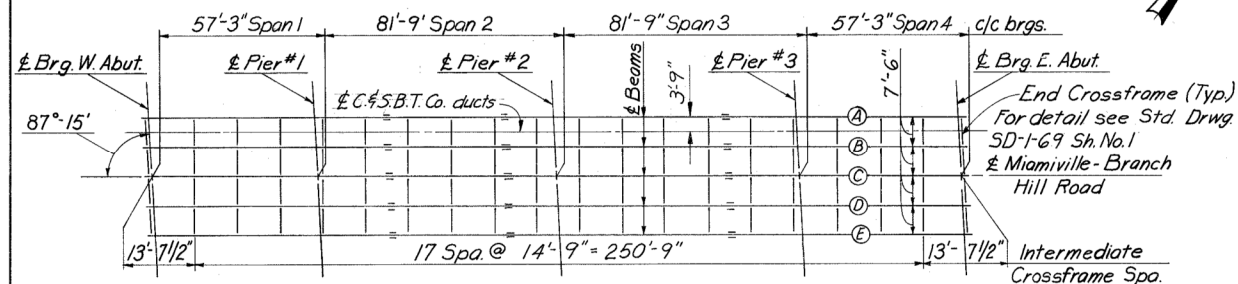
BRIDGE No. CLE-275-0044
UNDER MIAMIVILLE-BRANCH HILL ROAD
CLERMONT COUNTY STA. 22+95.10 I.R. 275

DESIGNED	DRAWN	TRACED	CHECKED	REVIEWED DATE	REVISION
MJE			NEN	JHO 1-12-67	



CROSS SECTION
(Looking North)

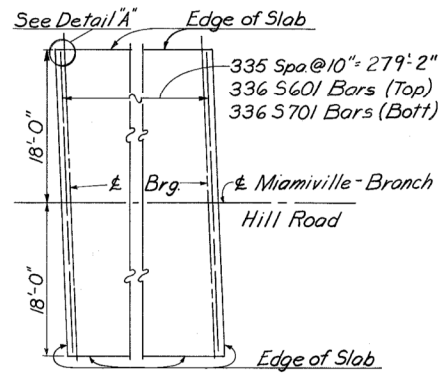
DIAGRAM SHOWING STAGGER OF BARS OVER PIERS



FRAMING PLAN

See Sh. No. 678 for structural steel details for carrying telephone conduits across bridge.

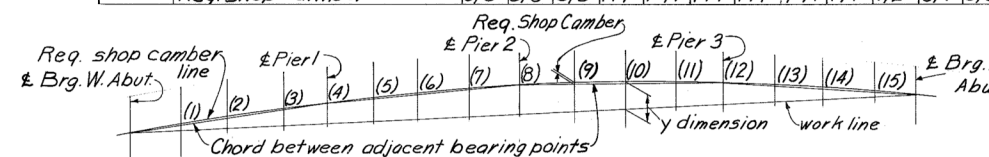
Deck Slab Depth: The distance from the top of deck to the top of 36WF160 (7 1/2") or top of 36WF135 (7 3/4"), is the nominal dimension. The quantity of deck concrete to be paid for shall be based on this dimension even though deviations from it may be necessary because the top flange of the beam may not have the exact camber or conformation required to place it parallel to the finished grade. Deduction shall be made for volume of encased steel plates as per Sec. 511.19 of the Construction and Material Specifications.



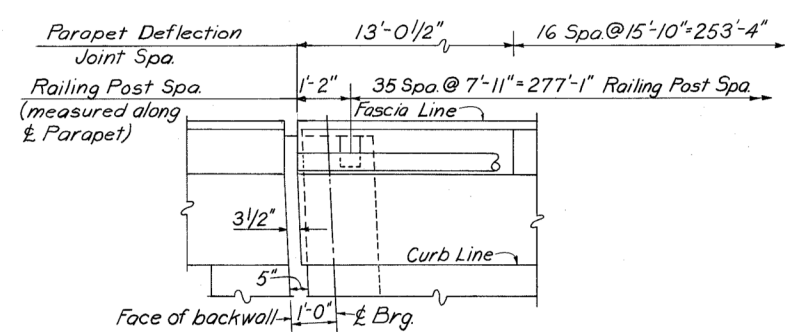
PARTIAL PLAN

(Safety Curb & Parapet not shown)

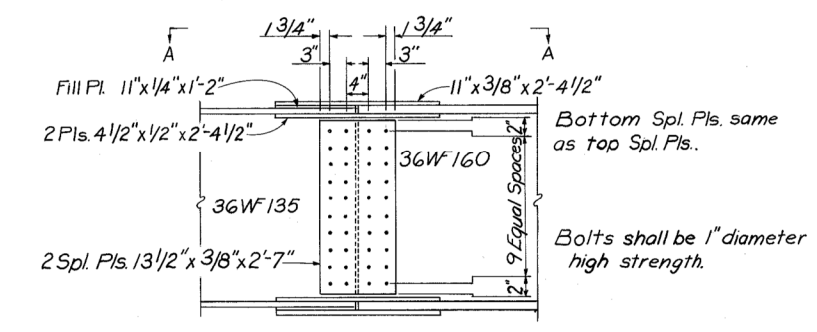
Beams	Span														
	Span 1			Span 2			Span 3			Span 4			Span 5		
	1/4	1/2	3/4	1/8	1/2	3/4	1/8	1/2	3/4	1/8	1/2	3/4	1/8	1/2	3/4
A	1/16	1/16	0	1/8	3/16	1/8	1/8	3/16	1/8	1/8	3/16	1/8	1/8	3/16	1/8
B	3/16	3/16	1/8	3/8	9/16	3/8	3/8	9/16	3/8	3/8	9/16	3/8	3/8	9/16	3/8
C	3/8	1/2	3/8	3/4	1	3/4	3/4	1	3/4	3/4	1	3/4	3/8	1/2	3/8
D	5/8	3/4	1/2	1/4	1/4	1/4	1/4	1/4	1/4	1/4	1/4	1/4	1/2	3/4	5/8
E	1/16	1/16	0	1/8	3/16	1/8	1/8	3/16	1/8	1/8	3/16	1/8	1/8	3/16	1/16
F	3/16	3/16	1/8	3/8	9/16	3/8	3/8	9/16	3/8	3/8	9/16	3/8	3/8	9/16	3/16
G	3/8	1/2	3/8	3/4	1	3/4	3/4	1	3/4	3/4	1	3/4	3/8	1/2	3/8
H	5/8	3/4	1/2	1/4	1/4	1/4	1/4	1/4	1/4	1/4	1/4	1/4	1/2	3/4	5/8



Beams	1	2	3	4	5	6	7	8	9	10	11	12	13	14	15
A, B, & C	2 3/8	4 3/8	5 1/8	7 1/4	9 3/8	10 3/4	11 1/4	11	11 1/4	10 3/4	9 3/8	7 1/4	5 1/8	4 3/8	2 3/8
D	2 1/8	3 7/8	5 1/4	6 3/8	8 5/8	10 1/8	10 3/4	10 1/2	10 7/8	10 1/2	9 1/8	7	5 3/4	4 1/4	2 3/8
E	2	3 1/2	4 5/8	5 5/8	8	9 1/2	10 1/8	10	10 3/8	10 1/8	8 7/8	6 3/4	5 5/8	4 1/8	2 1/4



DETAIL A

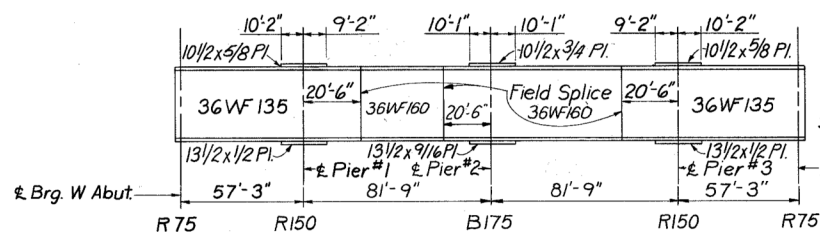


BEAM SPLICE DETAIL

Work this splice detail with Std. Drwg. SD-1-69 sheet No. 4.

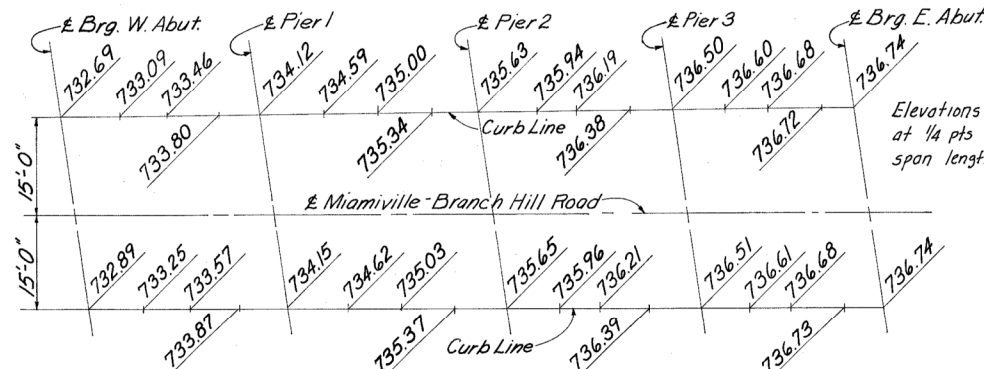
For Field Splice detail of 36WF160 beams see Std. Drwg. SD-1-69, Sh. No. 4.

MICROFILMED
JAN 11 1968



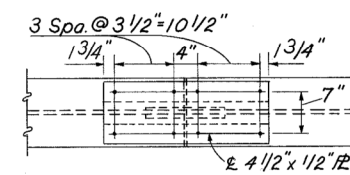
ELEVATION

Work this drawing with Std. Drwg. SD-1-69 Sh. No. 1
For bearing details see Std. Drwg. RB-1-55.
For end dam and curb plate details at abutments See Sect. A-A Sh. No. 1 and curb plate details Sh. No. 2 Std. Drwg. SD-1-69.
For welding of plates to WF see Moment Plates Std. Drwg. SD-1-69 Sh. No. 3



SCREED ELEVATIONS

Screed elevations shown equal final grade elevations plus anticipated dead load deflection due to weight of deck concrete.



VIEW A-A

H&E Sh. No. B-6

HAZELET & ERDAL
CONSULTING ENGINEERS
CINCINNATI, OHIO

SUPERSTRUCTURE DETAILS
BRIDGE No. CLE-275-0044
UNDER MIAMVILLE-BRANCH HILL ROAD

CLERMONT COUNTY STA. 22+95.10 IR 275

DESIGNED	DRAWN	TRACED	CHECKED	REVIEWED DATE	REVISION
M.E.	M.E.	NEV	JHO	1-12-67	