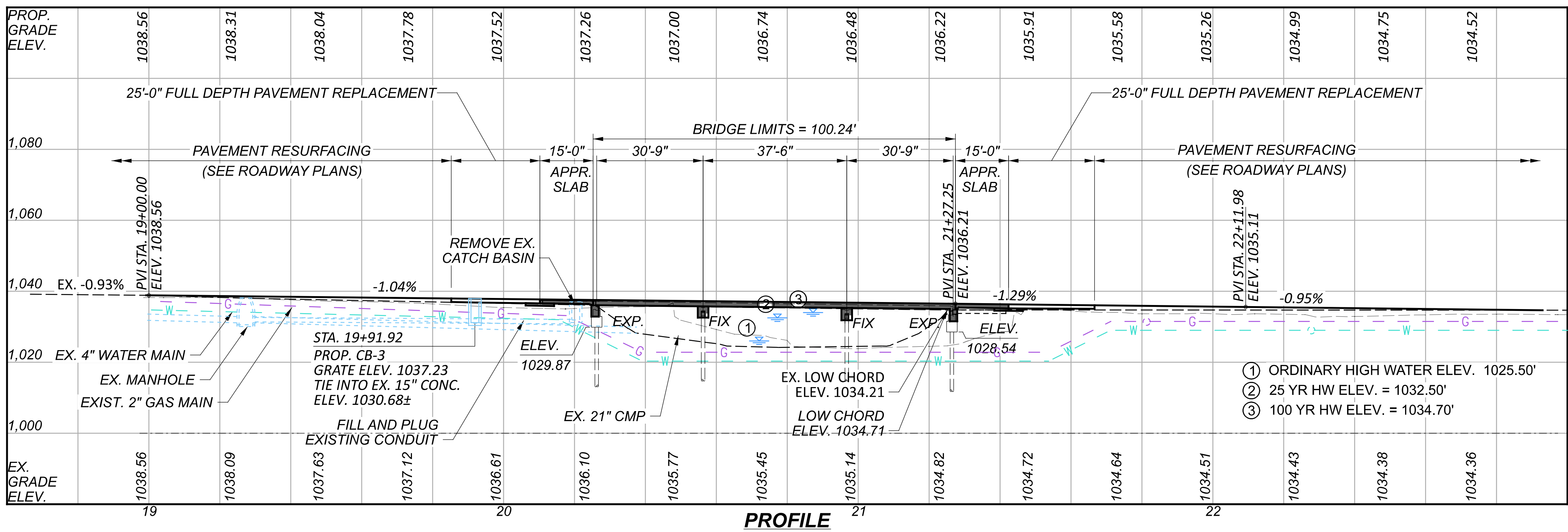


PLAN



PROFILE

DESIGN TRAFFIC

2023 ADT = 1,100 2023 ADTT = 176
 2043 ADT = 1,100 2043 ADTT = 176
 DIRECTIONAL DISTRIBUTION = 0.51

HYDRAULIC DATA

DRAINAGE AREA = 17.9 SQ. MILES
 Q (25) = 1940 CFS V (25) = 3.74 FT/S
 Q (100) = 2710 CFS V (100) = 2.84 FT/S
 STRUCTURE CLEARS THE 25 YEAR
 DESIGN HW BY 1.76 FEET.

PROPOSED WORK

REPLACE EXISTING REINFORCED CONCRETE DECK SLAB WITH NEW CAST-IN-PLACE REINFORCED CONCRETE SLAB SUPERSTRUCTURE. REPLACE APPROACH SLABS AND RECONSTRUCT THE ABUTMENTS DOWN TO THE TOP OF FOOTING TO CONVERT TO INTEGRAL ABUTMENTS. SEAL SUPERSTRUCTURE AND SUBSTRUCTURE CONCRETE WITH EPOXY-URETHANE SEALER.

LEGEND

■ - FULL DEPTH FLEXIBLE ASPHALT REPLACEMENT

EXISTING STRUCTURE

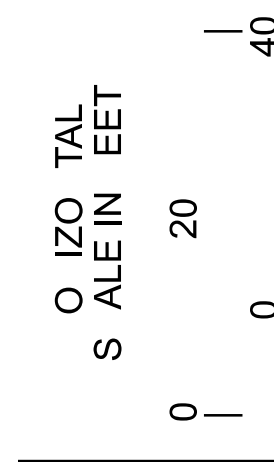
TYPE: CONTINUOUSLY REINFORCED CONCRETE SLAB ON CAPPED PILE PIERS AND ABUTMENTS

SPANS: 30'±, 37.5'±, 30'± (C/C BRGS.)
 ROADWAY: 28'-0" T/T, 5'-0" SIDEWALK BOTH SIDES
 VEHICULAR LIVE LOAD: HS-15
 SKEW: 30° R.F.
 WEARING SURFACE: 3" CONCRETE
 APPROACH SLABS: AS-1-54 (15'-0" LONG)
 ALIGNMENT: TANGENT
 CROWN: NORMAL
 STRUCTURE FILE NUMBER: 1403788
 DATE BUILT: 1955
 DISPOSITION: SUPERSTRUCTURE TO BE REPLACED

PROPOSED STRUCTURE

TYPE: THREE SPAN CONTINUOUS REINFORCED CONCRETE SLAB ON EXISTING REINFORCED CONCRETE ABUTMENTS AND PIERS ON REINFORCED CONCRETE PILES

SPANS: 30'-9"±, 37.5'±, 30'-9"± (C/C BRGS.)
 ROADWAY: 26'-0" F/F CURB
 VEHICULAR LIVE LOAD: HL-93(SUPERSTRUCTURE) (EXISTING SUBSTRUCTURE PILING);HS-20
 FUTURE WEARING SURFACE: 0.06 KIP/SF
 SKEW: 30° R.F.
 WEARING SURFACE: 1" MONOLITHIC CONCRETE
 APPROACH SLABS: AS-1-15 (15'-0" LONG)
 ALIGNMENT: TANGENT
 CROWN: .016 FT/FT
 DECK AREA: 4064 SF
 COORDINATES: LATITUDE 39°29'44.73" N
 LONGITUDE 83°38'23.82" W



SITE PLAN
 BRIDGE No.: CLI-729-1329
 OVER WILSON CREEK

SFN 1403855
 DESIGN AGENCY



DESIGNER CHECKER
 GTF AS

CAH 05/12/23

PROJECT ID 77922


SUBSET	TOTAL
1	14

SHEET	TOTAL
64	105

ESTIMATED QUANTITIES - STRUCTURE No.: CLI-729-1329 (03/STR/13 FUNDING SPLIT)									
ITEM	EXTENSION	TOTAL	UNIT	DESCRIPTION	ABUT.	PIERS	SUPER.	GEN.	
202	11203	LS	LS	PORTIONS OF STRUCTURE REMOVED, OVER 20 FOOT SPAN, AS PER PLAN			LUMP		
202	22900	67	SY	APPROACH SLAB REMOVED					67
202	23500	67	SY	WEARING COURSE REMOVED					67
503	11100	LUMP	LS	COFFERDAMS AND EXCAVATION BRACING					LUMP
503	21300	LUMP	LS	UNCLASSIFIED EXCAVATION					LUMP
507	00550	24	FT	12" CAST-IN-PLACE REINFORCED CONCRETE PILES, FURNISHED		24			
509	27000	84035	LB	CHROMIUM STEEL REINFORCEMENT	2170	2475	79390		
510	10001	152	EACH	DOWEL HOLES, AS PER PLAN	152				
511	32212	238	CY	CLASS QC2 CONCRETE WITH QC/QA, SUPERSTRUCTURE				238	
511	43262	17	CY	CLASS QC2 CONCRETE WITH QC/QA, PIER CAP		17			
511	44110	5	CY	CLASS QC1 CONCRETE, ABUTMENT NOT INCLUDING FOOTING	5				
511	51512	84	CY	CLASS QC2 CONCRETE WITH QC/QA, SIDEWALK				84	
511	81200	LUMP	LS	CONCRETE MISC.: CONSULTANT FOR CONCRETE QUALITY CONTROL INCLUDING TESTING AND INSPECTION					LUMP
512	10050	150	SY	SEALING OF CONCRETE SURFACES (NON-EPOXY)				150	
512	10100	240	SY	SEALING OF CONCRETE SURFACES (EPOXY-URETHANE)	40	32	168		
512	33000	39	SY	TYPE 2 WATERPROOFING	39				
512	74000	41	SY	REMOVAL OF EXISTING COATINGS FROM CONCRETE SURFACES	41				
514	00050	151	SF	SURFACE PREPARATION OF EXISTING STRUCTURAL STEEL		151			
514	00056	151	SF	FIELD PAINTING OF EXISTING STRUCTURAL STEEL, PRIME COAT		151			
516	13200	62	SF	½" PREFORMED EXPANSION JOINT FILLER	62				
516	13600	83	SF	1" PREFORMED EXPANSION JOINT FILLER	83				
516	14014	60	FT	INTEGRAL ABUTMENT EXPANSION JOINT SEAL					60
517	75120	201.5	FT	RAILING (CONCRETE PARAPET WITH TWIN STEEL TUBE RAILING)			201.50		
518	21200	41	CY	POROUS BACKFILL WITH GEOTEXTILE FABRIC	41				
518	40000	124	FT	6" PERFORATED CORRUGATED PLASTIC PIPE	124				
518	40010	100	FT	6" NON-PERFORATED CORRUGATED PLASTIC PIPE, INCLUDING SPECIALS	100				
526	10011	127	SY	REINFORCED CONCRETE APPROACH SLABS WITH QC/QA (T=12"), AS PER PLAN					127
526	90010	87.37	FT	TYPE A INSTALLATION					87.37
625	33000	2	EACH	STRUCTURE GROUNDING SYSTEM					2
846	00110	36.5	CF	POLYMER MODIFIED ASPHALT EXPANSION JOINT SYSTEM					36.5

STRUCTURE ESTIMATED QUANTITIES
 BRIDGE No.: CLI-729-1329
 OVER WILSON CREEK

SFN
 1403855
 DESIGN AGENCY



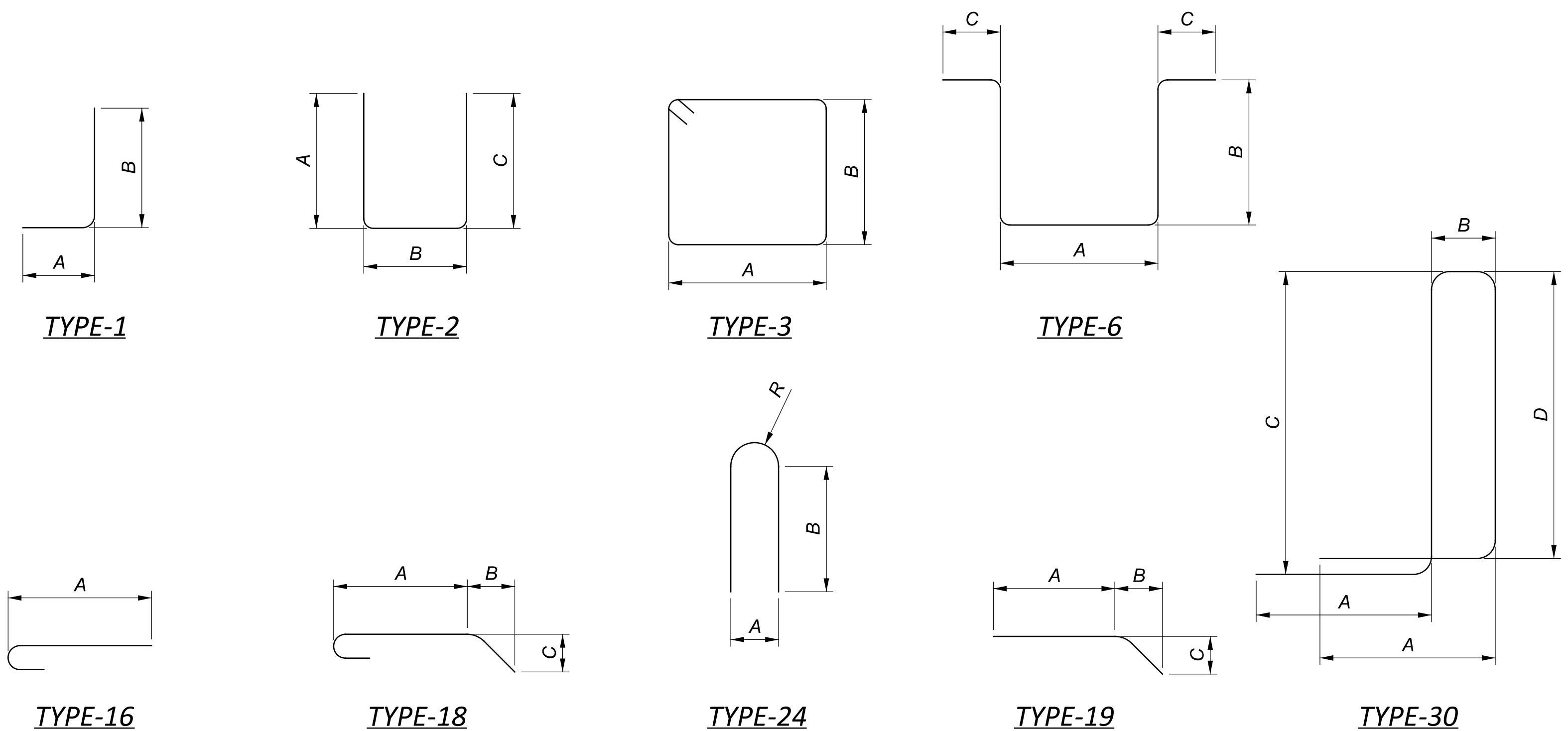
DESIGNER: GTF
 CHECKER: AS
 REVIEWER: CAH 05/12/23
 PROJECT ID: 77922

SUBSET	TOTAL
3	14
SHEET	TOTAL
66	105

MARK	NUMBER	LENGTH	WEIGHT	TYPE	DIMENSIONS						
	TOTAL				A	B	C	D	E	R	INC
DIAPHRAGM & SLAB REINFORCING STEEL											
S501	192	6'-6"	1302	2	2'-7"	1'-7 1/2"	2'-7"				
S502	96	6'-8"	668	3	1'-11"	1'-1"					
S503	8	10'-5"	87	3	2'-2 1/2"	2'-8"					
S504	158	3'-3"	536	2	1'-3"	1'-0"	1'-3"				
S505	101	46'-2"	4865	STR							
S506	184	18'-0"	3454	STR							
S507	92	13'-6"	1295	STR							
S601	109	46'-2"	7558	STR							
S801	20	46'-1"	2460	STR							
S802	6	35'-7"	570	STR							
S803	184	33'-7"	16499	16	32'-9"						
S804	92	41'-4"	10153	STR							
S901	184	31'-1"	19445	STR							
SUB-TOTAL		68,892									
ABUTMENT AND WINGWALLS											
A501	56	2'-4"	136	STR							
	4 SR	6'-6"				1'-1"					
A502	OF	TO	58	3	1'-11"	TO			0'-3 3/4"		
	5	9'-0"				2'-4"					
A503	4	9'-2"	38	3	1'-11"	2'-4"					
A504	4	9'-10"	41	3	2'-3"	2'-4"					
A505	4	4'-11"	21	STR							
A506	4	6'-0"	25	STR							
A507	4	2'-11"	12	STR							
A508	4	5'-7"	23	STR							
A509	4	7'-5"	31	STR							
A510	4	6'-5"	27	STR							
A511	4	7'-5"	31	STR							
A512	4	4'-0"	17	STR							
A801	96	2'-10"	726	16	2'-0"						
D801	66	5'-7"	984	18	3'-4 3/4"	1'-0"	1'-0"				
SUB-TOTAL		2,170									
RAILING AND SIDEWALK											
R501	8	4'-1"	34	1	0'-10"	3'-5"					
R502	8	6'-2"	51	1	2'-11"	3'-5"			0'-7 1/2"		
R503	8	4'-7"	38	STR							
R504	44	10'-10"	497	30	1'-6"	0'-8"	3'-11"	3'-9"			
R505	264	7'-10"	2112	30	1'-6"	0'-8"	2'-5"	2'-3"			
R506	4	6'-3"	26	19	4'-10"	1'-4 1/4"	0'-5"				
R507	4	6'-2"	26	STR							
R508	16	10'-6"	175	19	9'-0 3/4"	1'-4 1/4"	0'-5"				
R509	16	10'-5"	174	STR							
R510	20	4'-5"	92	1	1'-6"	3'-1"					
R511	20	4'-3"	89	1	1'-6"	2'-11"					
R512	96	6'-3"	628	STR							
R513	8	30'-0"	250	STR							
R514	8	40'-0"	334	STR							
R515	32	40'-0"	1335	STR							
R516	16	24'-9"	413	STR							
R517	264	3'-8"	1056	2	1'-6"	0'-11"	1'-6"				
R518	264	4'-6"	1320	2	1'-6"	1'-9"	1'-6"				
R519	264	6'-8"	1848	STR							
SUB-TOTAL		10,498									

MARK	NUMBER	LENGTH	WEIGHT	TYPE	DIMENSIONS						
	TOTAL				A	B	C	D	E	R	INC
PIER CAP REINFORCING STEEL											
P401	32	9'-5"	151	3	2'-6"	2'-0"					
P501	28	9'-5"	275	6	2'-8"	2'-10"	0'-10"				
P502	4	8'-6"	35	6	1'-9"	2'-10"	0'-10"				
P503	4	4'-3"	18	2	0'-10"	2'-10"	0'-10"				
P504	8	10'-9"	90	24	2'-6"	3'-5"			1'-2 1/2"		
P505	4	40'-10"	170	STR							
P1101	8	40'-10"	1736	STR							
SUB-TOTAL		2,475									
APPROACH SLAB SIDEWALK*											
R519	44	6'-8"	306	STR							
R520	28	14'-6"	423	STR							
R521	60	4'-0"	250	2	1'-6"	1'-3"	1'-6"				
R522	60	3'-11"	245	2	1'-6"	1'-2"	1'-6"				
SUB-TOTAL		1,224									

* REINFORCING STEEL SHOWN IN THE TABLE ABOVE IS TO BE PAID UNDER ITEM 526 - REINFORCED CONCRETE SLAB (T=12")



ESTIMATED QUANTITIES - STRUCTURE No.: CLI-729-1588 (01/STR/13 FUNDING SPLIT)									
ITEM	EXTENSION	TOTAL	UNIT	DESCRIPTION	ABUT.	PIERS	SUPER.	GEN.	
202	11203	LS	LS	PORTIONS OF STRUCTURE REMOVED, OVER 20 FOOT SPAN, AS PER PLAN			LUMP		
202	22900	112	SY	APPROACH SLAB REMOVED					112
202	23500	112	SY	WEARING COURSE REMOVED					112
503	11100	LUMP	LS	COFFERDAMS AND EXCAVATION BRACING					LUMP
503	21300	LUMP	LS	UNCLASSIFIED EXCAVATION					LUMP
507	71200	161	FT	SPECIAL - PILE ENCASEMENT		161			
509	26000	58503	LB	GALVANIZED STEEL REINFORCEMENT	2051	2354	54098		
510	10001	200	EACH	DOWEL HOLES, AS PER PLAN	200				
511	32212	238	CY	CLASS QC2 CONCRETE WITH QC/QA, SUPERSTRUCTURE			238		
511	43262	22	CY	CLASS QC2 CONCRETE WITH QC/QA, PIER CAP		22			
511	43510	21	CY	CLASS QC1 CONCRETE, ABUTMENT NOT INCLUDING FOOTING	21				
511	81200	LUMP	LS	CONCRETE MISC.: CONSULTANT FOR CONCRETE QUALITY CONTROL INCLUDING TESTING AND INSPECTION					LUMP
512	10100	137	SY	SEALING OF CONCRETE SURFACES (EPOXY-URETHANE)	56	33	48		
512	33000	31	SY	TYPE 2 WATERPROOFING	31				
512	74000	28	SY	REMOVAL OF EXISTING COATINGS FROM CONCRETE SURFACES	28				
514	00050	88	SF	SURFACE PREPARATION OF EXISTING STRUCTURAL STEEL		88			
514	00056	88	SF	FIELD PAINTING OF EXISTING STRUCTURAL STEEL, PRIME COAT		88			
516	13200	29	SF	½" PREFORMED EXPANSION JOINT FILLER	29				
516	13600	95	SF	1" PREFORMED EXPANSION JOINT FILLER	95				
516	14014	72	FT	INTEGRAL ABUTMENT EXPANSION JOINT SEAL					72
517	70100	214	FT	RAILING (THREE STEEL TUBE BRIDGE RAILING)			214.00		
518	21200	40	CY	POROUS BACKFILL WITH GEOTEXTILE FABRIC	40				
SPECIAL	51822300	214	FT	STEEL DRIP STRIP			214		
518	40000	90	FT	6" PERFORATED CORRUGATED PLASTIC PIPE	90				
518	40010	20	FT	6" NON-PERFORATED CORRUGATED PLASTIC PIPE, INCLUDING SPECIALS	20				
526	25010	200	SY	REINFORCED CONCRETE APPROACH SLABS WITH QC/QA (T=15")					200
526	90010	72	FT	TYPE A INSTALLATION					72
625	33000	2	EACH	STRUCTURE GROUNDING SYSTEM					2
846	00110	21	CF	POLYMER ASPHALT EXPANSION JOINT SYSTEM					21