

14-0-2

MONROEVILLE SALINEVILLE ROAD

COLUMBIANA COUNTY

WASHINGTON TOWNSHIP SALINEVILLE VILLAGE

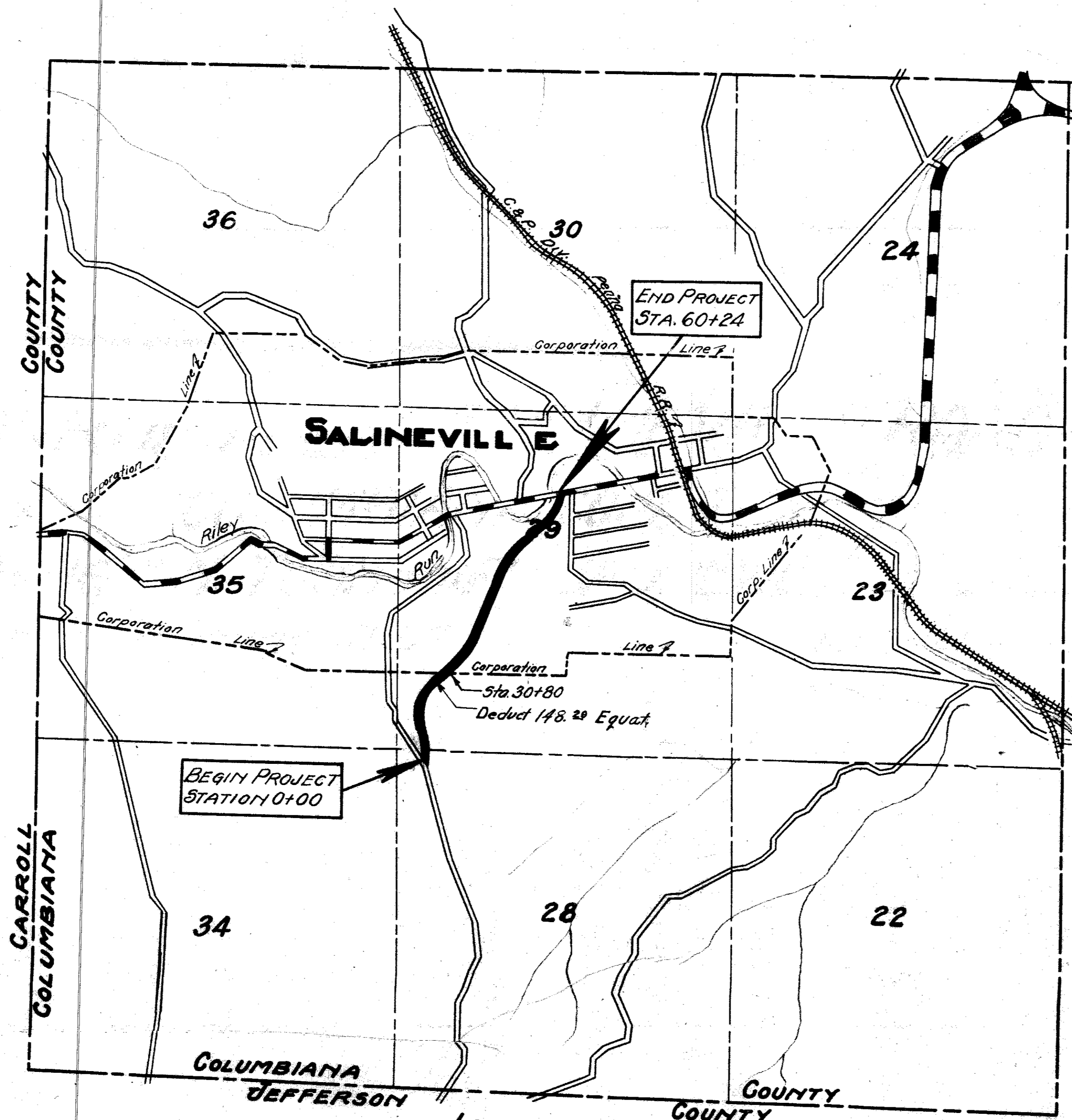
NET LENGTH OF PROJECT 1.11 MILES

INDEX

TITLE PAGE	SHEET 1
TYPICAL SECTION	SHEET 2
PLAN & PROFILE	SHEET 2-3
CROSS SECTIONS	SHEET 4-10
STRUCTURAL DETAILS	SHEET 11-
SUMMARY OF QUANTITIES	SHEET

CONVENTIONAL SIGNS

COUNTY LINE	---
CORPORATION LINE	- - - - -
CENTER LINE	—+—+—+—+—
PROPERTY LINE	=====
RIGHT OF WAY LINE	=====
TREES	⊙



LOCATION PLAN
 Scale 4"=1 Mile
 Partion to be improved
 State Highways
 County & Township Roads.

COMMISSIONERS APPROVAL

We, the Commissioners of Columbiana County, hereby approve these plans and declare that the necessary Right of Way has been provided.

[Signature]
 J. M. ...
[Signature]
 County Commissioners.

Date 8/17 1936

I hereby approve these plans and declare that the making of this improvement will not require the closing of the highway to traffic.

Date 8/17 1936
[Signature]
 City Engineer.

Approved and accepted by this ___ day of ___ 193__

Date 193__
 Township Trustees.

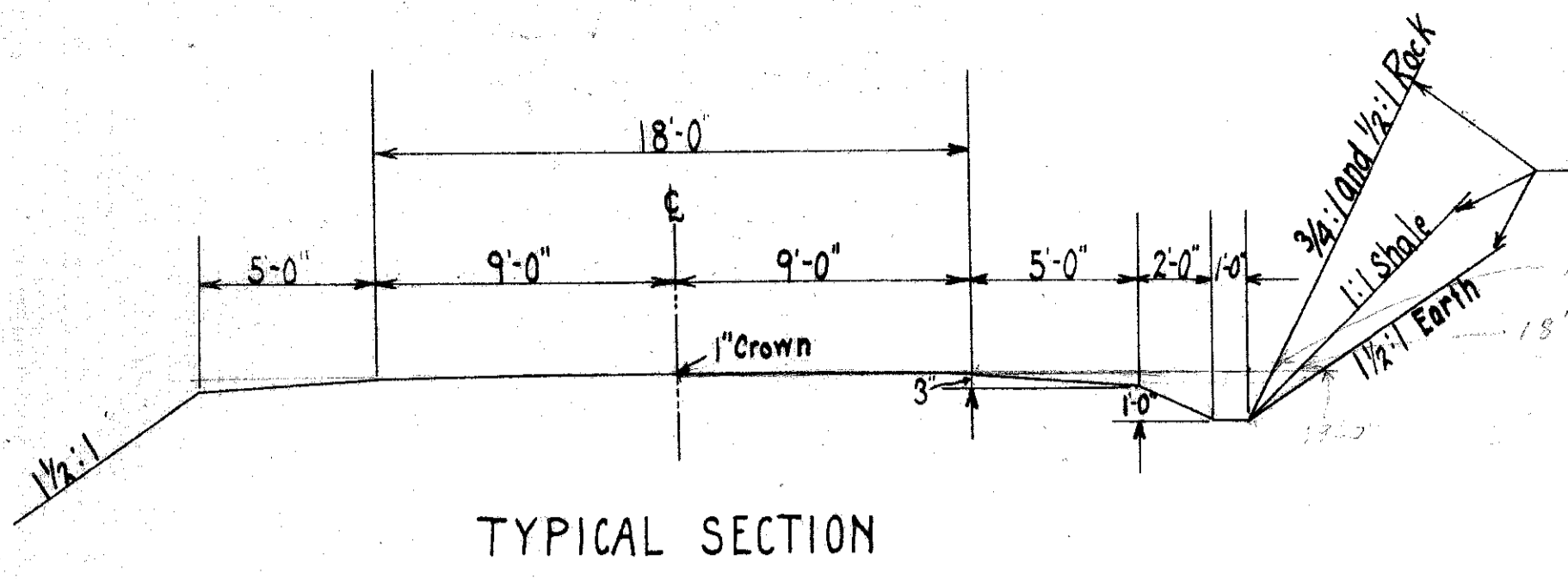
CERTIFICATION

CLERK OF COUNCIL

I hereby certify that these plans have been approved by the Council of the Village of Salineville.

Passed No. ___ 193__

Clerk of Council



BM Sta. 2+00-Ltt.
N.E. Cor. House-Water Table
Assumed Elev. = 1100.00

Chas. & Etta Tobin

J.Q. Moore

321.28
216.5
537.78

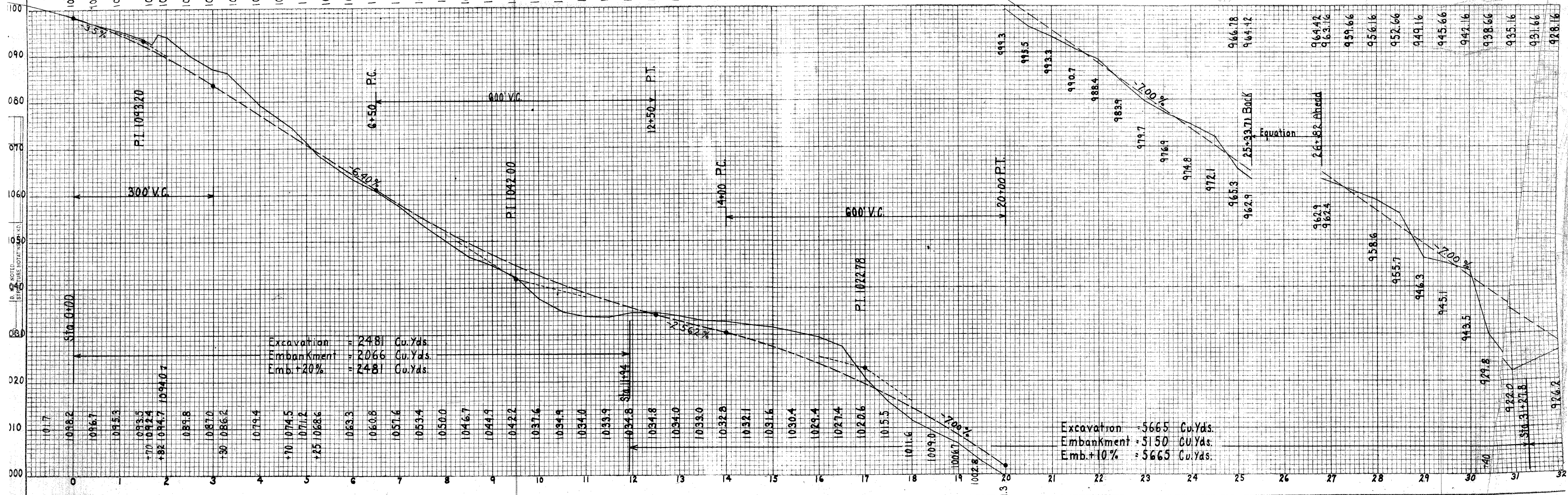
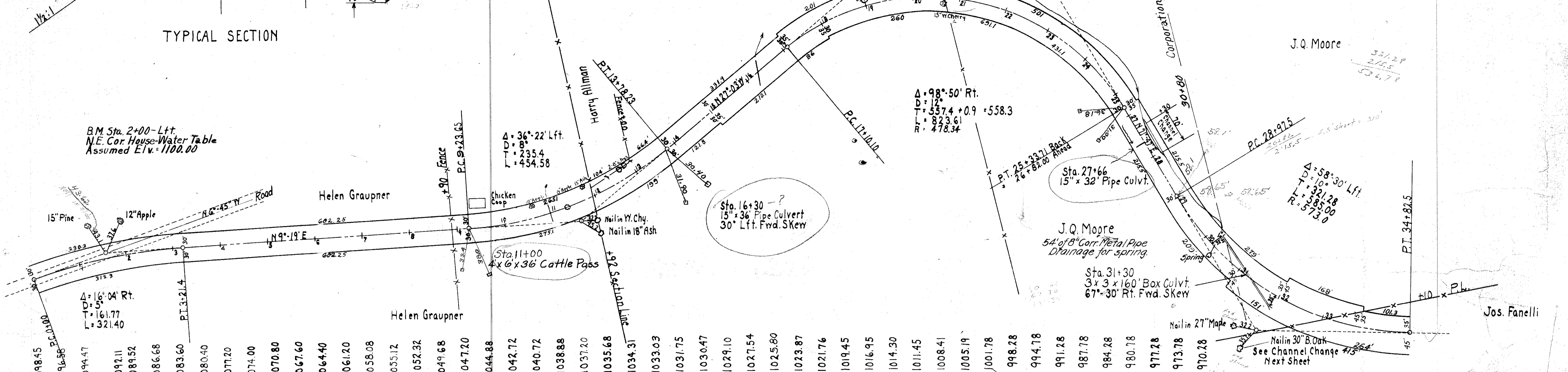
$\Delta = 98^{\circ}50' \text{ Rt.}$
D = 12
T = 537.4 + 0.9 = 558.3
R = 823.61
R = 478.34

Sta. 16+30 - ?
15" x 36" Pipe Culvert
30' Lft. Fwd. Skew

J.Q. Moore
54' of 8" Cor. Metal Pipe
Drainage for Spring

Sta. 31+30
3 x 3 x 160' Box Culvt.
67'-30" Rt. Fwd. Skew

$\Delta = 58^{\circ}30' \text{ Lft.}$
D = 10
T = 321.28
R = 535.00
R = 573.0



Excavation = 2481 Cu.Yds.
Embankment = 2066 Cu.Yds.
Emb. + 20% = 2481 Cu.Yds.

Excavation = 5665 Cu.Yds.
Embankment = 3150 Cu.Yds.
Emb. + 10% = 5665 Cu.Yds.

650 LBS. 8" dia. 200 TONS #7

BACK KURT

+440 TO GO

35+00
31+82.5
TT.5

#7
30+82 00x24

North
Monroeville-Salineville
Washington Twp. &
Salineville Village

3
17

