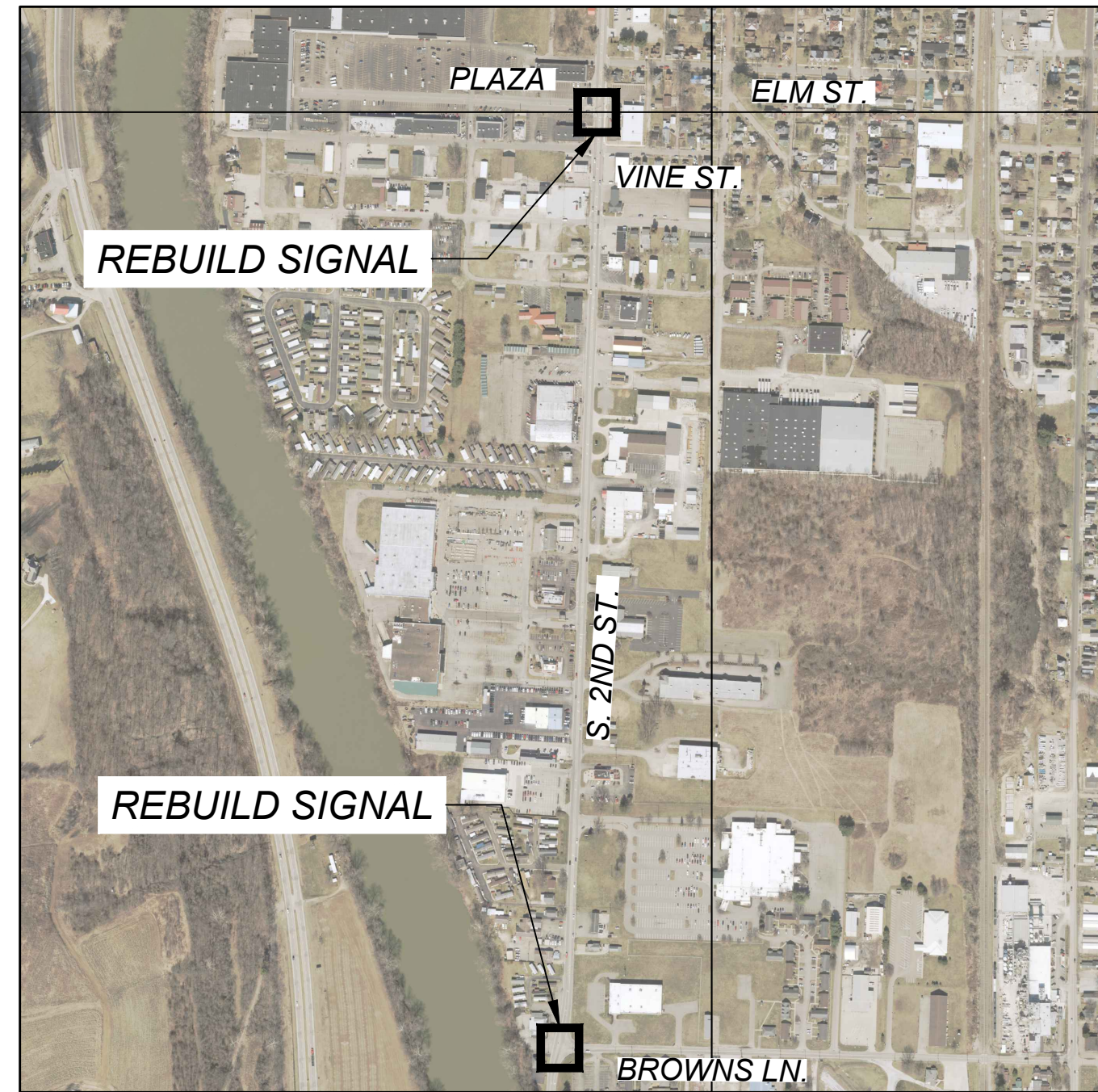
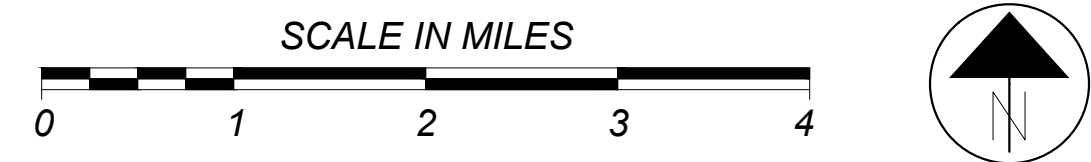


\\10.1.1.4\PROJECTS\2021 PROJECTS\21378 COSHOCTON, CITY OF\001 COS-COSHOCTON SIGNAL UPGRADES\DRAWINGS\PHASE 2\GT2 (D5 SIGNATURE)\DWG 13-Sep-24 3:11 PM



LOCATION MAP

LATITUDE: 40°15'40" N LONGITUDE: 81°52'10" W



PORTION TO BE IMPROVED	_____
INTERSTATE HIGHWAY	_____
FEDERAL ROUTES	_____
STATE ROUTES	_____
COUNTY & TOWNSHIP ROADS	_____
OTHER ROADS	_____

DESIGN DESIGNATION

CURRENT ADT (2023)	11,022
DESIGN YEAR ADT (2043)	13,226
DESIGN HOURLY VOLUME (2023)	900
DIRECTIONAL DISTRIBUTION	50%
TRUCKS (24 HOUR B&C)	3%
DESIGN SPEED	25 MPH
LEGAL SPEED	25 MPH
DESIGN FUNCTIONAL CLASSIFICATION:	
MAJOR COLLECTOR	
NHS PROJECT	YES

DESIGN EXCEPTIONS

N/A

ADA WAIVERS

NONE REQUIRED

UNDERGROUND UTILITIES
Contact Two Working Days Before You Dig

OHIO811, 8-1-1, or 1-800-362-2764
(N n-members must be called directly)

PLAN PREPARED BY:

TEC Engineering, Inc.
7288 Central Parke Blvd
Mason, OH 45040
(513)-771-8828

Cincinnati - Dayton - Mason

ENGINEER'S SEAL

COS - CR-271-06.26

CITY OF COSHOCTON COSHOCTON COUNTY

FINAL PLANS

INDEX OF SHEETS:

TITLE SHEET	1
GENERAL NOTES	2-5
GENERAL SUMMARY	6
2ND STREET & BROWNS LANE SIGNAL	7-10
2ND STREET & PLAZA SIGNAL	11-14

PROJECT DESCRIPTION

RECONSTRUCTION OF TRAFFIC SIGNALS ALONG SECOND STREET (CR 271) WITHIN CITY OF COSHOCTON.

RAILROAD INVOLVEMENT

NONE

EARTH DISTURBED AREAS

PROJECT EARTH DISTURBED AREA:	0 ACRES
ESTIMATED CONTRACTOR EARTH DISTURBED AREA:	0 ACRES
NOTICE OF INTENT EARTH DISTURBED AREA:	0 ACRES

2023 SPECIFICATIONS

THE STANDARD SPECIFICATIONS OF THE STATE OF OHIO, DEPARTMENT OF TRANSPORTATION, INCLUDING SUPPLEMENTAL SPECIFICATIONS LISTED IN THE PLANS AND CHANGES LISTED IN THE PROPOSAL SHALL GOVERN THIS IMPROVEMENT.

STANDARD CONSTRUCTION DRAWINGS							SUPPLEMENTAL SPECIFICATIONS	
HL-10.11	7/21/23	MT-95.31	7/19/19	TC-21.21	1/20/23	800	1/19/24	
HL-10.12	7/21/23	MT-95.32	4/19/19	TC-22.20	1/17/14	805	7/16/10	
HL-10.13	1/20/23	MT-95.50	7/21/17	TC-81.22	7/21/23	813	7/21/23	
HL-30.11	7/21/23	MT-95.61	4/19/19	TC-83.10	1/17/20	832	7/19/24	
		MT-97.10	4/19/19	TC-83.20	1/19/24	903	7/20/12	
		MT-105.10	1/17/20	TC-85.20	4/21/23	913	4/16/21	
		MT-110.10	7/19/13			916	7/21/23	

APPROVED SAFETY SERVICE DIRECTOR, CITY OF COSHOCTON

APPROVED JASON L. STURGEON, P.E. DISTRICT DEPUTY DIRECTOR

APPROVED JACK MOHR DIRECTOR, DEPARTMENT OF TRANSPORTATION

FEDERAL PROJECT NO. E230914
PID NO. 120156
CONSTRUCTION PROJECT NO. 00000
COS - CR271-06.26
1/14

\\10.1.1.4\PROJECTS\2021 PROJECTS\21378 COSHOCTON, CITY OF\001 COS-COSHOCTON SIGNAL UPGRADES\DRAWINGS\PHASE 2\GS001.DWG 13-Sep-24 4:23 PM

SHEET NUM.						PART.	ALT	ITEM	ITEM	GRAND	UNIT	DESCRIPTION	SEE SHEET NO.
8	12					01/SAF/21/COSOH	(X)		EXT	TOTAL			
TRAFFIC SIGNALS													
4	6					10		625	00450	10	EACH	CONNECTION, FUSED PULL APART	
2	3					5		625	00460	5	EACH	CONNECTION, UNFUSED PULL APART	
4	6					10		625	17901	10	EACH	BRACKET ARM, AS PER PLAN, DECORATIVE, 2.5'	3
642	909					1,551		625	23304	1,551	FT	NO. 8 AWG 600 VOLT DISTRIBUTION CABLE	
345	519					864		625	23400	864	FT	NO. 10 AWG POLE AND BRACKET CABLE	
36	15					51		625	25606	51	FT	CONDUIT, 4", 725.052	
121	149					270		625	25908	270	FT	CONDUIT, JACKED OR DRILLED, 725.052, 4"	
4	6					10		625	27551	10	EACH	LUMINAIRE, DECORATIVE, AS PER PLAN, 100 WATT, LED, 120 VOLT, TYPE IV	3
25	11					36		625	29002	36	FT	TRENCH, 24" DEEP	
3	3					6		625	30706	6	EACH	PULL BOX, 725.08, 24"	
3	3					6		625	32000	6	EACH	GROUND ROD	
4	2					6		630	75000	6	EACH	SIGN ATTACHMENT ASSEMBLY	
	6					6		630	79200	6	EACH	SIGN ATTACHMENT ASSEMBLY, MAST ARM	
7	46					53		630	80100	53	SF	SIGN, FLAT SHEET	
8	7					15		632	05007	15	EACH	VEHICULAR SIGNAL HEAD, (LED), 3-SECTION, 12" LENS, 1-WAY, POLYCARBONATE, AS PER PLAN, BLACK	5
	2					2		632	05065	2	EACH	VEHICULAR SIGNAL HEAD, (LED), 4-SECTION, 12" LENS, 1-WAY, POLYCARBONATE, AS PER PLAN, BLACK	5
	2					2		632	20730	2	EACH	PEDESTRIAN SIGNAL HEAD (LED), TYPE D2, COUNTDOWN	
8	9					17		632	25000	17	EACH	COVERING OF VEHICULAR SIGNAL HEAD	
	2					2		632	25010	2	EACH	COVERING OF PEDESTRIAN SIGNAL HEAD	
	271					271		632	40500	271	FT	SIGNAL CABLE, 5 CONDUCTOR, NO. 14 AWG	
1,284	1,498					2,782		632	40700	2,782	FT	SIGNAL CABLE, 7 CONDUCTOR, NO. 14 AWG	
2	3					5		632	64010	5	EACH	SIGNAL SUPPORT FOUNDATION	4
134	136					270		632	68300	270	FT	POWER CABLE, 3 CONDUCTOR, NO. 6 AWG	
1	1					2		632	70000	2	EACH	POWER SERVICE	
1	1					2		632	90100	2	EACH	REMOVAL OF TRAFFIC SIGNAL INSTALLATION	3
1	1					2		633	45000	2	EACH	GPS (GLOBAL POSITIONING SYSTEM) CLOCK ASSEMBLY	
1						1		633	65510	1	EACH	CABINET, TYPE TS-2	
	1					1		633	65511	1	EACH	CABINET, TYPE TS-2, AS PER PLAN, POLE MOUNTED	4
1						1		633	67100	1	EACH	CABINET FOUNDATION	
1	1					2		633	67200	2	EACH	CONTROLLER WORK PAD	
1						1		633	75000	1	EACH	UNINTERRUPTIBLE POWER SUPPLY (UPS), 1000 WATT	
	1					1		633	75001	1	EACH	UNINTERRUPTIBLE POWER SUPPLY (UPS), 1000 WATT, AS PER PLAN, POLE MOUNTED	4
4	4					8		809	69101	8	EACH	STOP LINE RADAR DETECTION, AS PER PLAN	4
1	1					2		809	69123	2	EACH	ATC CONTROLLER, AS PER PLAN	5
4	4					8		809	69240	8	EACH	PREEMPT CONFIRMATION LIGHT	5
INCIDENTALS													
						LUMP		614	11000	LS		MAINTAINING TRAFFIC	
						LUMP		623	10000	LS		CONSTRUCTION LAYOUT STAKES AND SURVEYING	
						LUMP		624	10000	LS		MOBILIZATION	
						20		614	11110	20	HOUR	LAW ENFORCEMENT OFFICER WITH PATROL CAR FOR ASSISTANCE	2
EROSION CONTROL													
						1,000		832	30000	1,000	EACH	EROSION CONTROL	
TRAFFIC SIGNALS ALTERNATES													
1						1	X	632	78369	1	EACH	COMBINATION SIGNAL SUPPORT, TYPE TC-12.31 DESIGN 10 POLE, WITH MAST ARMS TC-81.22 DESIGN 13 AND DESIGN 12, AS PER PLAN, (GENERIC) (ALTERNATE 1)	4
	1					1	X	632	79101	1	EACH	COMBINATION SIGNAL SUPPORT, TYPE TC-81.22, DESIGN 2, AS PER PLAN, (GENERIC) (ALTERNATE 1)	4
	2					2	X	632	79141	2	EACH	COMBINATION SIGNAL SUPPORT, TYPE TC-81.22, DESIGN 13, AS PER PLAN, (GENERIC) (ALTERNATE 1)	4
1						1	X	632	79301	1	EACH	COMBINATION SIGNAL SUPPORT, TYPE TC-81.22 DESIGN 4 POLE, WITH MAST ARMS TC-81.22 DESIGN 2 AND DESIGN 2, AS PER PLAN, (GENERIC) (ALTERNATE 1)	4
1						1	X	632	78369	1	EACH	COMBINATION SIGNAL SUPPORT, TYPE TC-12.31 DESIGN 10 POLE, WITH MAST ARMS TC-81.22 DESIGN 13 AND DESIGN 12, AS PER PLAN, (DECORATIVE) (ALTERNATE 2)	4
	1					1	X	632	79101	1	EACH	COMBINATION SIGNAL SUPPORT, TYPE TC-81.22, DESIGN 2, AS PER PLAN, (DECORATIVE) (ALTERNATE 2)	4
	2					2	X	632	79141	2	EACH	COMBINATION SIGNAL SUPPORT, TYPE TC-81.22, DESIGN 13, AS PER PLAN, (DECORATIVE) (ALTERNATE 2)	4
1						1	X	632	79301	1	EACH	COMBINATION SIGNAL SUPPORT, TYPE TC-81.22 DESIGN 4 POLE, WITH MAST ARMS TC-81.22 DESIGN 2 AND DESIGN 2, AS PER PLAN, (DECORATIVE) (ALTERNATE 2)	4
1	1					2	X	809	69200	2	EACH	EMERGENCY VEHICLE PREEMPTION (GENERIC) (ALTERNATE 1)	5
1	1					2	X	809	69210	2	EACH	PREEMPT RECEIVING UNIT (GENERIC) (ALTERNATE 1)	5
150	150					300	X	809	69220	300	FT	PREEMPT DETECTOR CABLE (GENERIC) (ALTERNATE 1)	5
1	1					2	X	809	69230	2	EACH	PREEMPT PHASE SELECTOR (GENERIC) (ALTERNATE 1)	5
1	1					2	X	809	69201	2	EACH	EMERGENCY VEHICLE PREEMPTION, AS PER PLAN (OPTICOM 3100) (ALTERNATE 2)	5
1	1					2	X	809	69211	2	EACH	PREEMPT RECEIVING UNIT, AS PER PLAN (OPTICOM 3100) (ALTERNATE 2)	5
150	150					300	X	809	69221	300	FT	PREEMPT DETECTOR CABLE, AS PER PLAN (OPTICOM 3100) (ALTERNATE 2)	5
1	1					2	X	809	69231	2	EACH	PREEMPT PHASE SELECTOR, AS PER PLAN (OPTICOM 3100) (ALTERNATE 2)	5

CALCULATED	AFS	CHECKED	DGO
GENERAL SUMMARY			
COS - CR271-06.26			
6			
14			