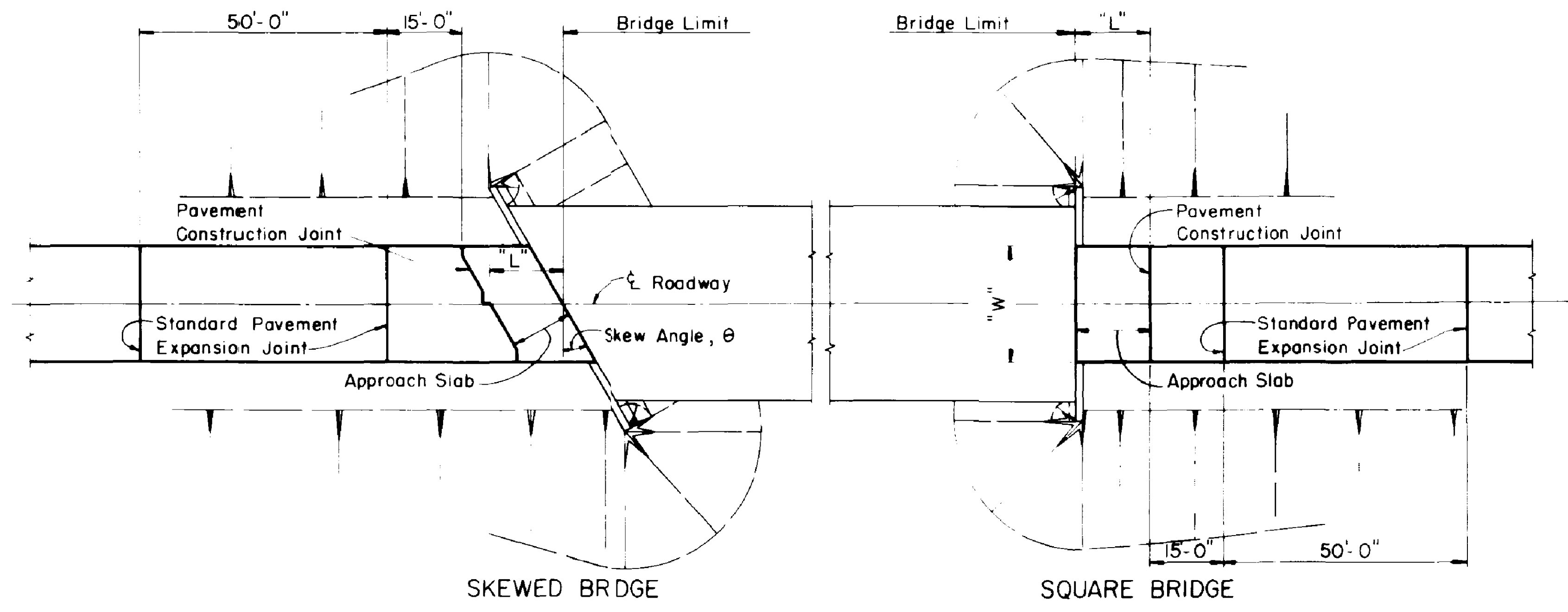


APPROACH SLAB FOR SKEWED BRIDGES



GENERAL PLAN
Showing Skewed and Square Approach Slabs

GENERAL: This drawing provides design and general construction details. The project plans will show length, skew, curbs (if any), estimated quantity (sq yds), and special notes and details where necessary. For conditions other than those indicated hereon, the approach slab shall be adapted to fit the ends of the bridge and the approach pavement.

WIDTH of approach slabs shall be the same as the width of the approach pavement unless otherwise indicated on the project plans.

CROWN shall conform to the rate of crown of the approach pavement and bridge deck. If the rate of crown of the bridge deck differs from that of approach pavement, a smooth transition shall be provided within the limits of the approach slab.

CONCRETE shall be Class "C" or Class "D".

REINFORCING STEEL: For skewed bridges the "A" bars shall be placed parallel to the centerline of roadway and the "B" bars shall be placed parallel to the abutments.

BAR SIZE is indicated in the bar mark. The first digit indicates the bar size number. For example, A801 is a No. 8 size bar.

PREFORMED EXPANSION JOINT FILLER at the edges of the approach slab shall be included with the approach slab for payment.

BRIDGE WITH SIDEWALKS shall be provided with curbed approach slabs for the full bridge roadway width. The curbs on the approach slabs shall transition from the bridge curb height to the approach curb height.

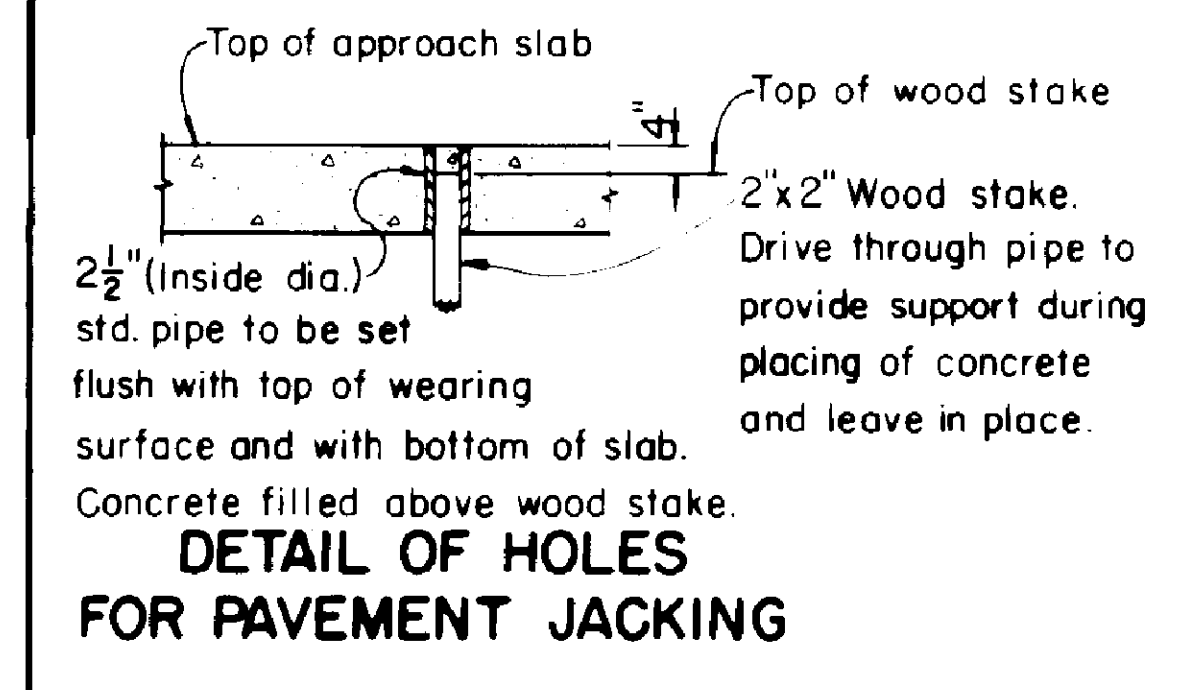
CONSTRUCTION JOINT details shown hereon (at the approach pavement end of the approach slab) apply only in case of concrete approach pavement or concrete base course. Payment for the construction joints, including dowel bars, is included in the price per sq. yd. bid for the approach pavement.

WEARING SURFACE: If a bituminous wearing surface is specified for the bridge, it also shall be used on the approach slab.

EXPANSION JOINTS shall be provided in concrete approach pavement or concrete base course at the locations shown on this drawing.

LONGITUDINAL JOINTS in accordance with Standard Construction Drawing No. BP-3 shall be provided at edges of all traffic lane elements. If joints are sawed the depth of sawed groove shall be 3". Approach-pavement type joint sealer shall be used in all joints.

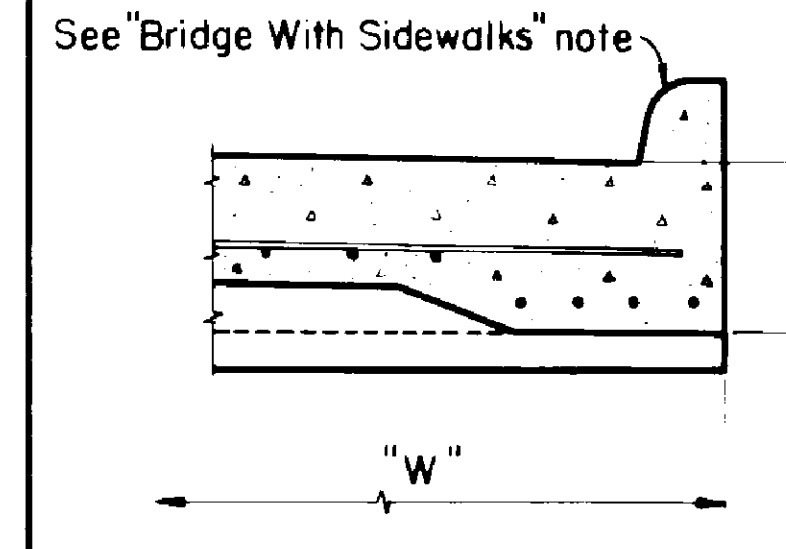
LENGTH of approach slabs shall be as shown on project plans.



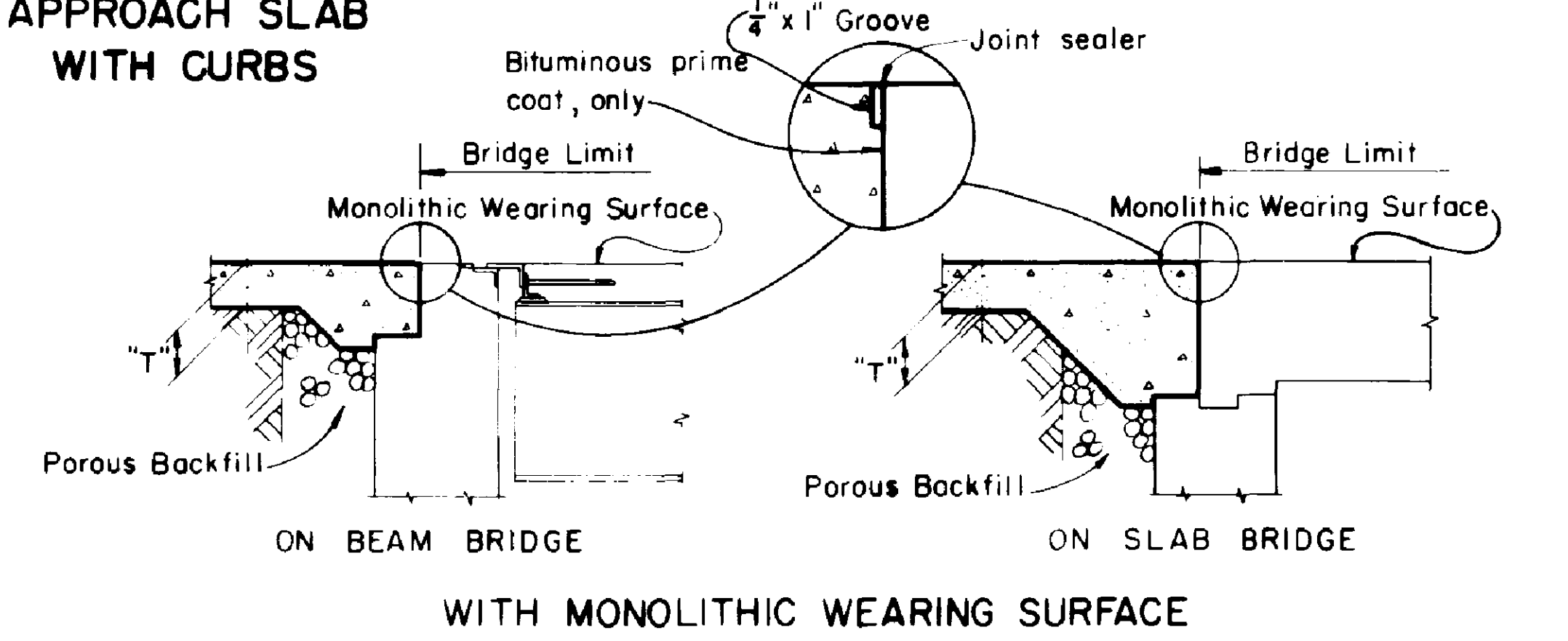
DETAIL OF HOLES FOR PAVEMENT JACKING

REINFORCING STEEL (FOR ONE APPROACH SLAB)									
Length "L"	Thick- ness "T"	"A" BARS				B501			
		Spcg "S"	Mark	Length	Dimension "A"	No. reqd	Length	No. reqd	
15'-0"	10"	8"	A801	15'-7"	14'-6"	7	(W-0.5)(sec θ)	14	
20'-0"	12"	7"	A802	20'-7"	19'-6"	7	(W-0.5)(sec θ)	17	
25'-0"	13"	6"	A803	25'-7"	24'-6"	7	(W-0.5)(sec θ)	20	
30'-0"	13"	6"	A804	30'-7"	29'-6"	7	(W-0.5)(sec θ)	23	

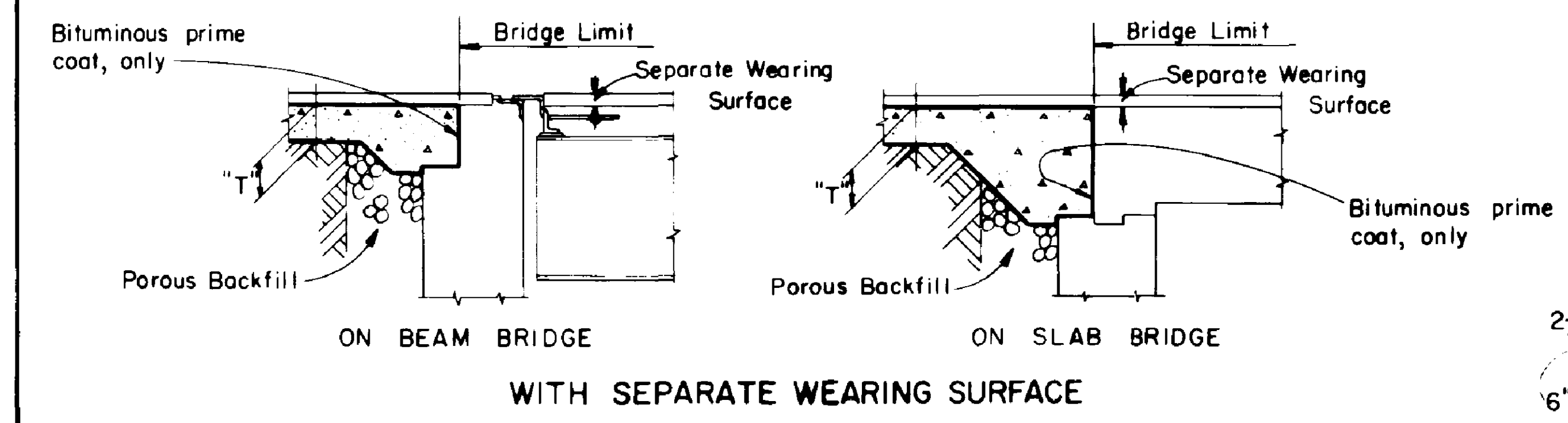
W = Approach Slab Width, out-to-out, in feet
 θ = Angle of Skew
 S = "A" bar spacing in inches



APPROACH SLAB WITH CURBS

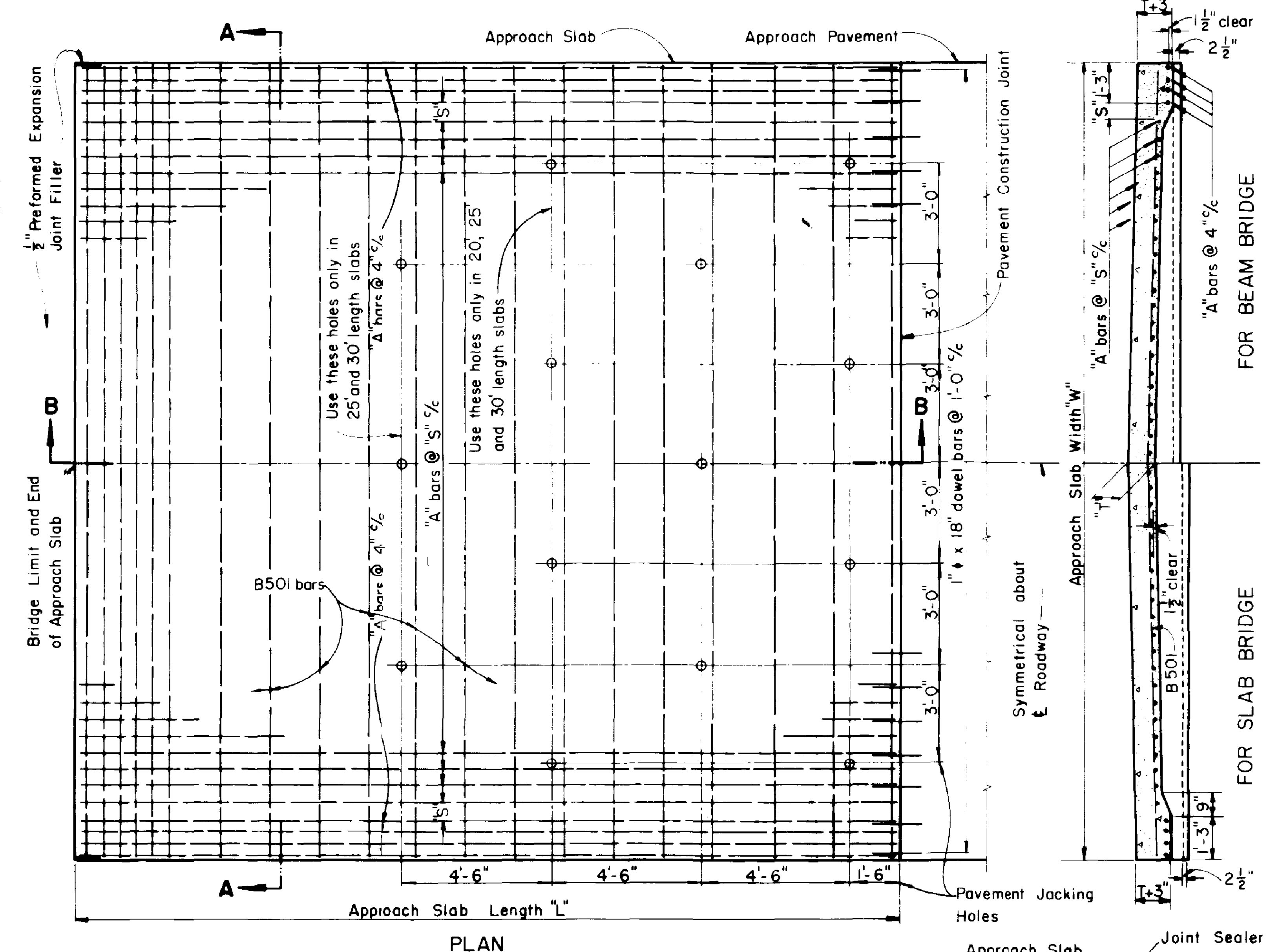


WITH MONOLITHIC WEARING SURFACE

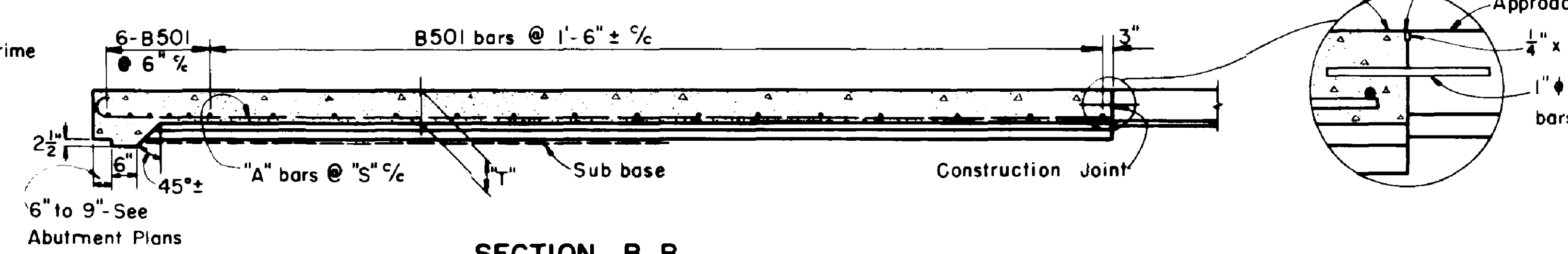


WITH SEPARATE WEARING SURFACE

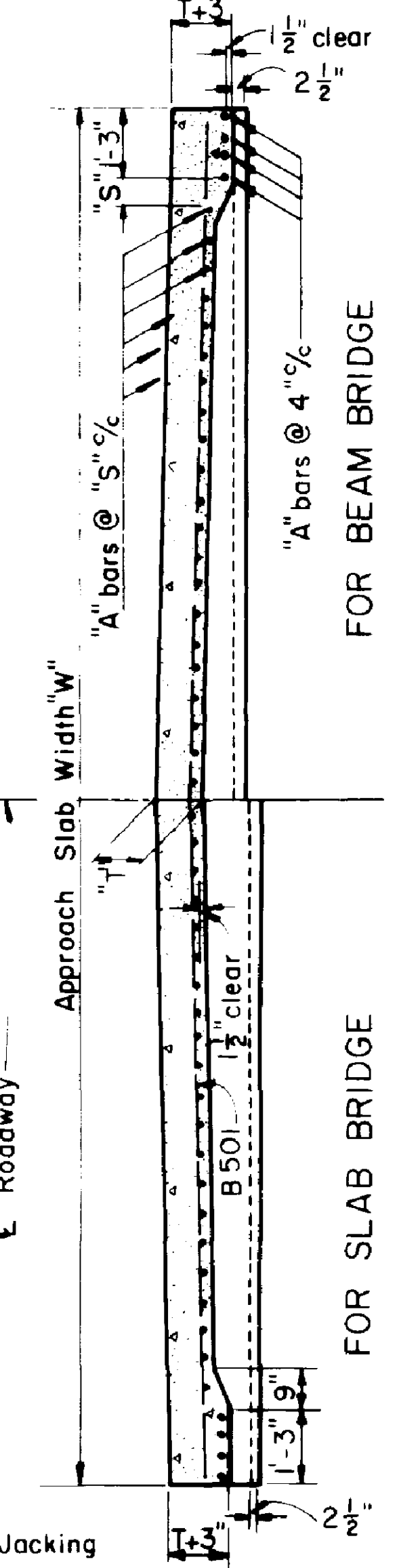
TYPICAL SECTIONS SHOWING JUNCTION OF APPROACH SLAB WITH BRIDGE



PLAN



SECTION B-B



SECTION A-A

REVISIONS	1-11-68
-----------	---------

STATE OF OHIO DEPARTMENT OF HIGHWAYS DIVISION OF DESIGN AND CONSTRUCTION BUREAU OF BRIDGES	
STANDARD REINFORCED CONCRETE APPROACH SLABS	
LENGTHS-15'-0", 20'-0", 25'-0" AND 30'-0"	
APPROVED: DATE: 11-6-67 PREPARED BY: CFB	DRAWING NUMBER AS-1-67